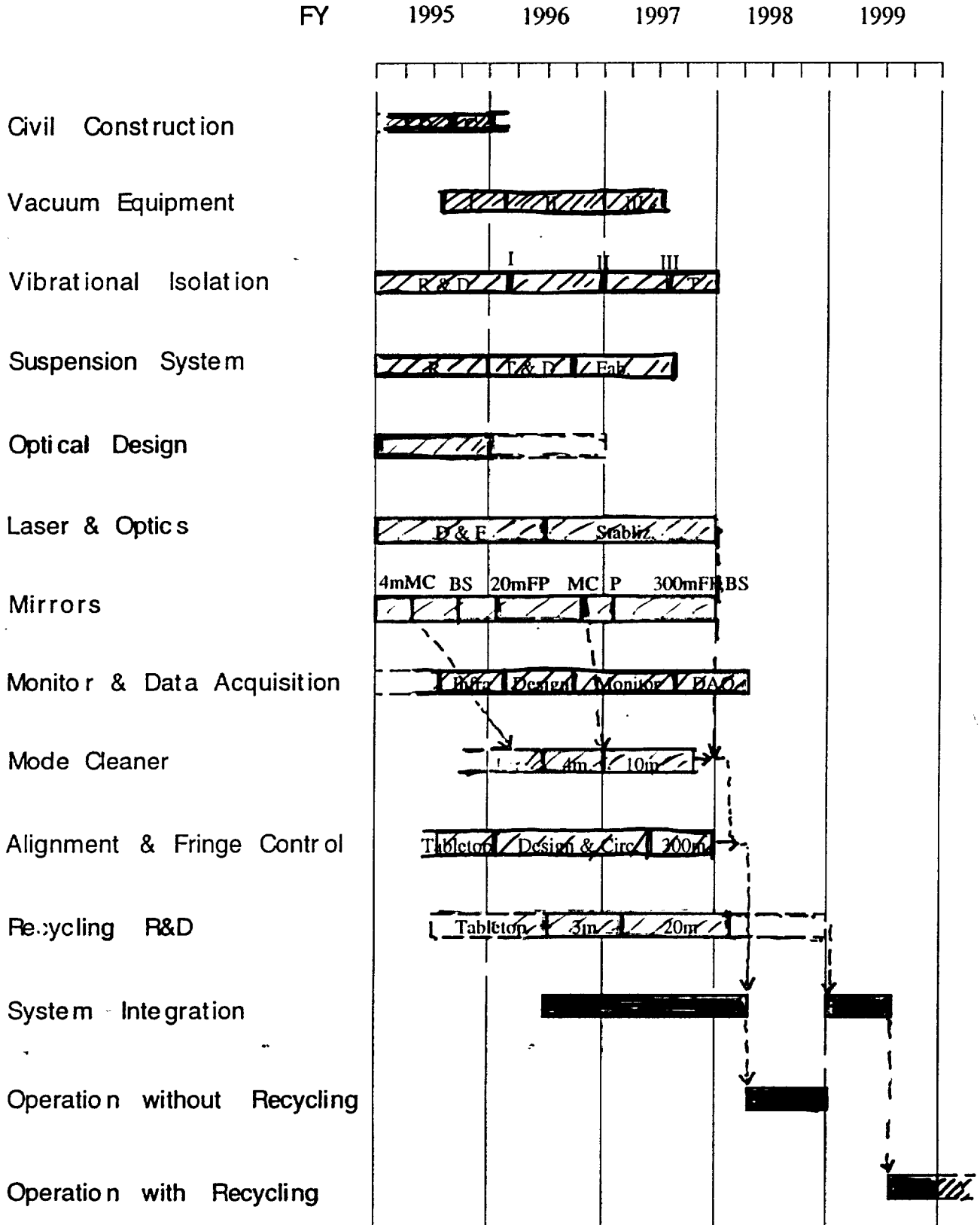


TAMA300 TIMETABLE



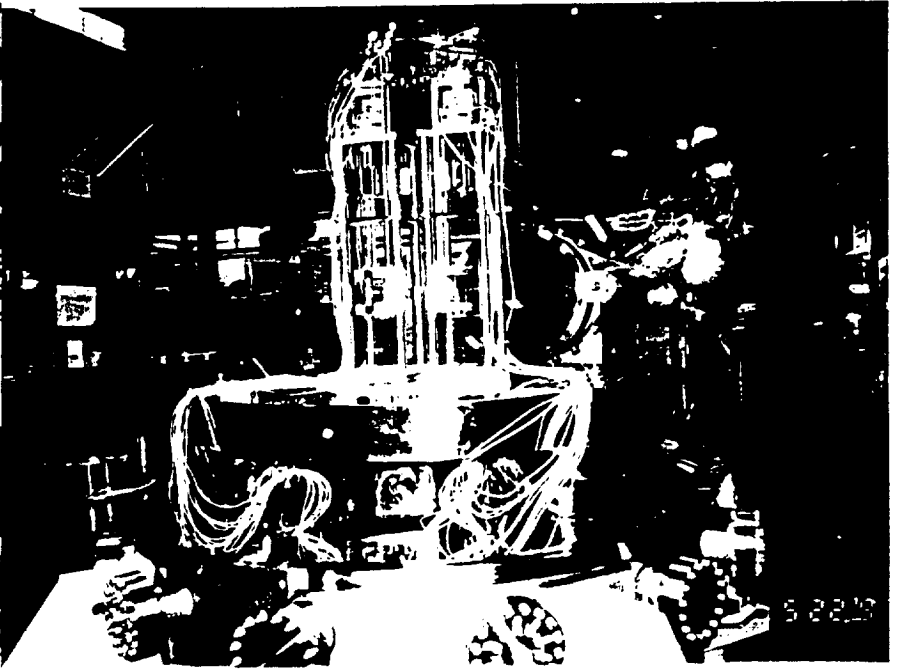
fuji moto

TAMA

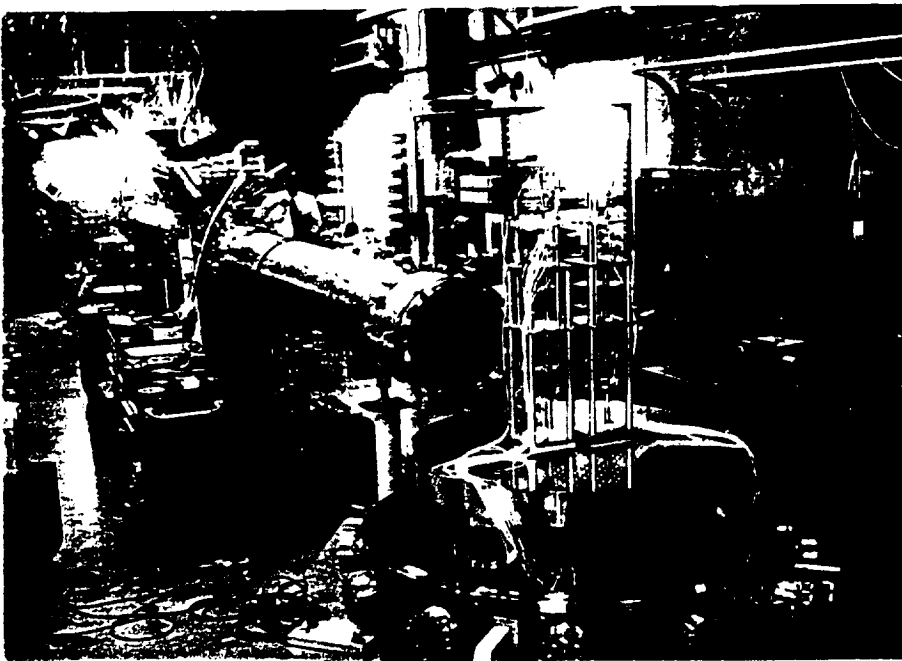
10 m Mode Cleaner Experiment



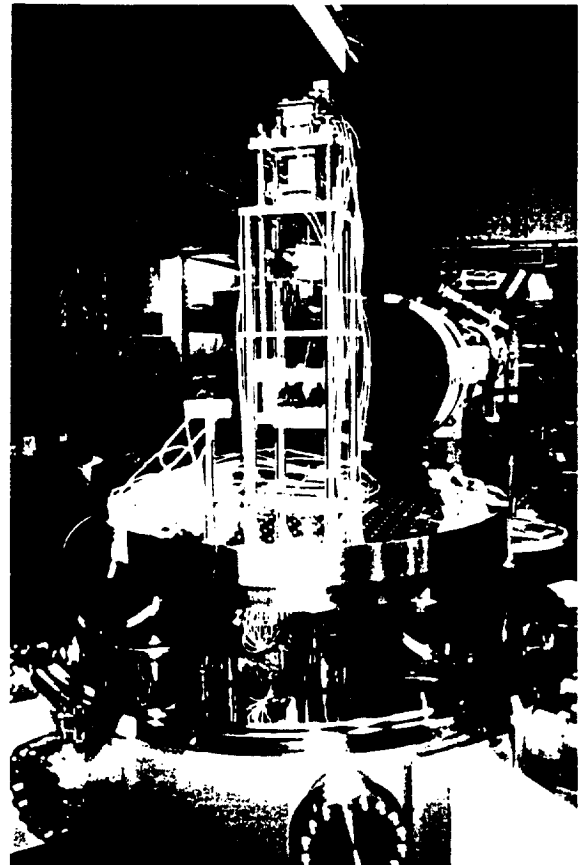
Mode Cleaner Chambers  
in the Central Building



Two of the Three Suspended Mirrors  
forming A Ring Cavity

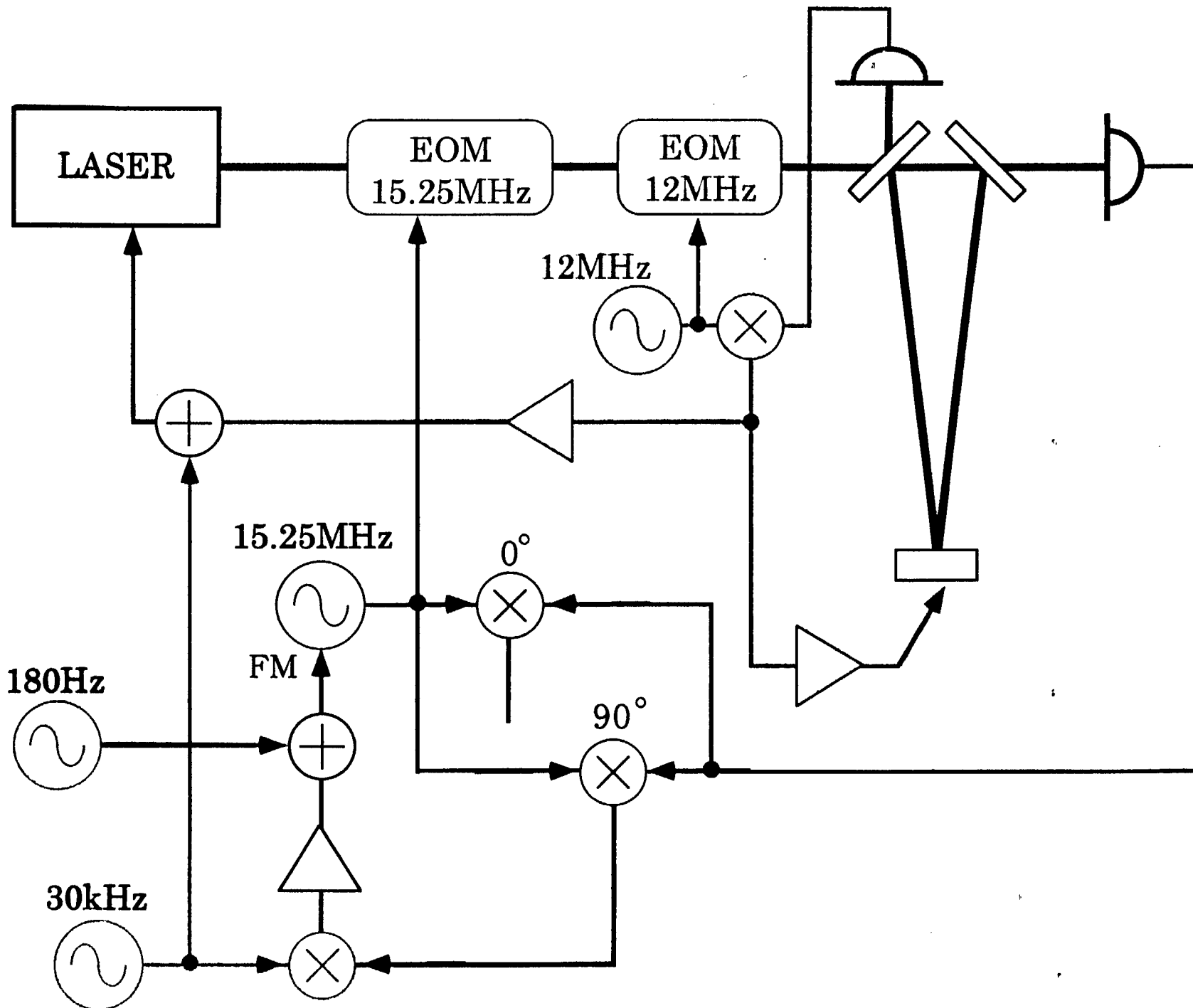


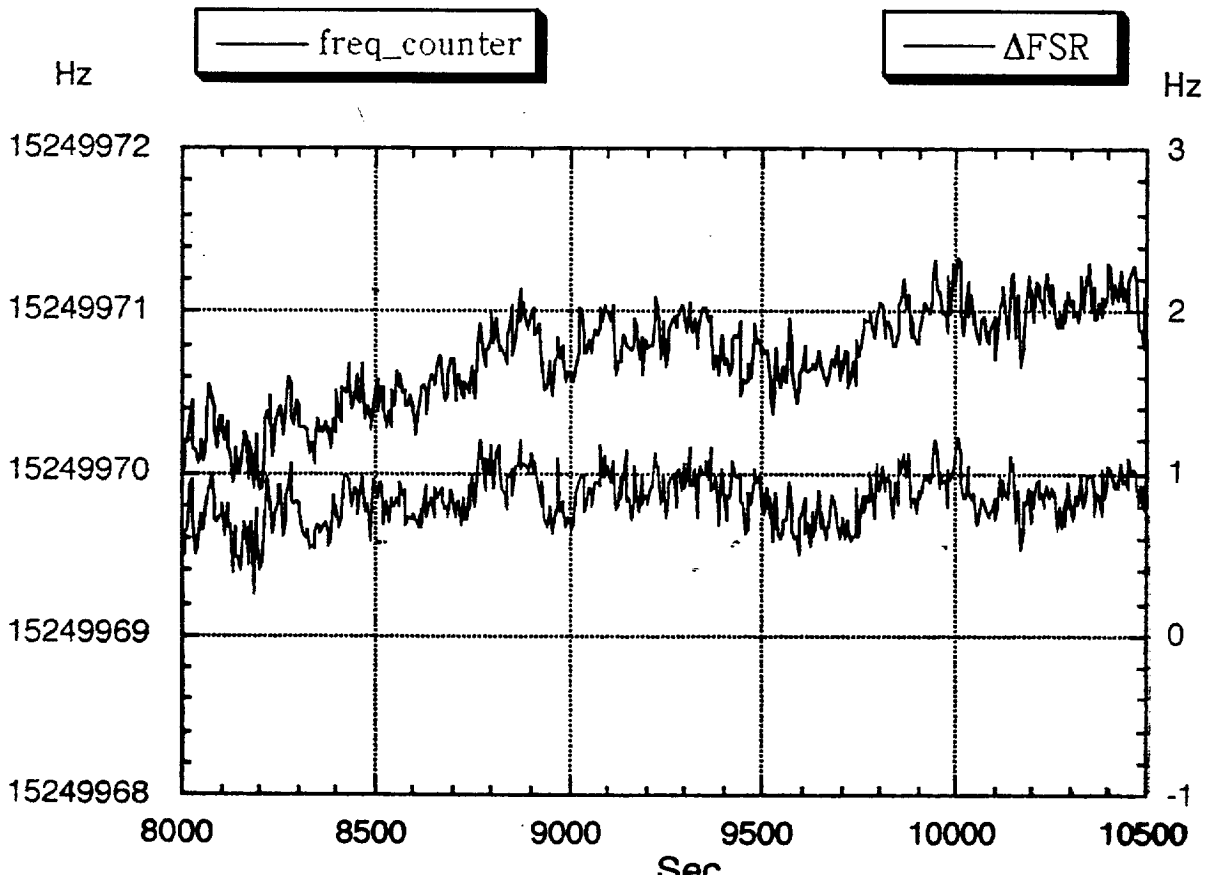
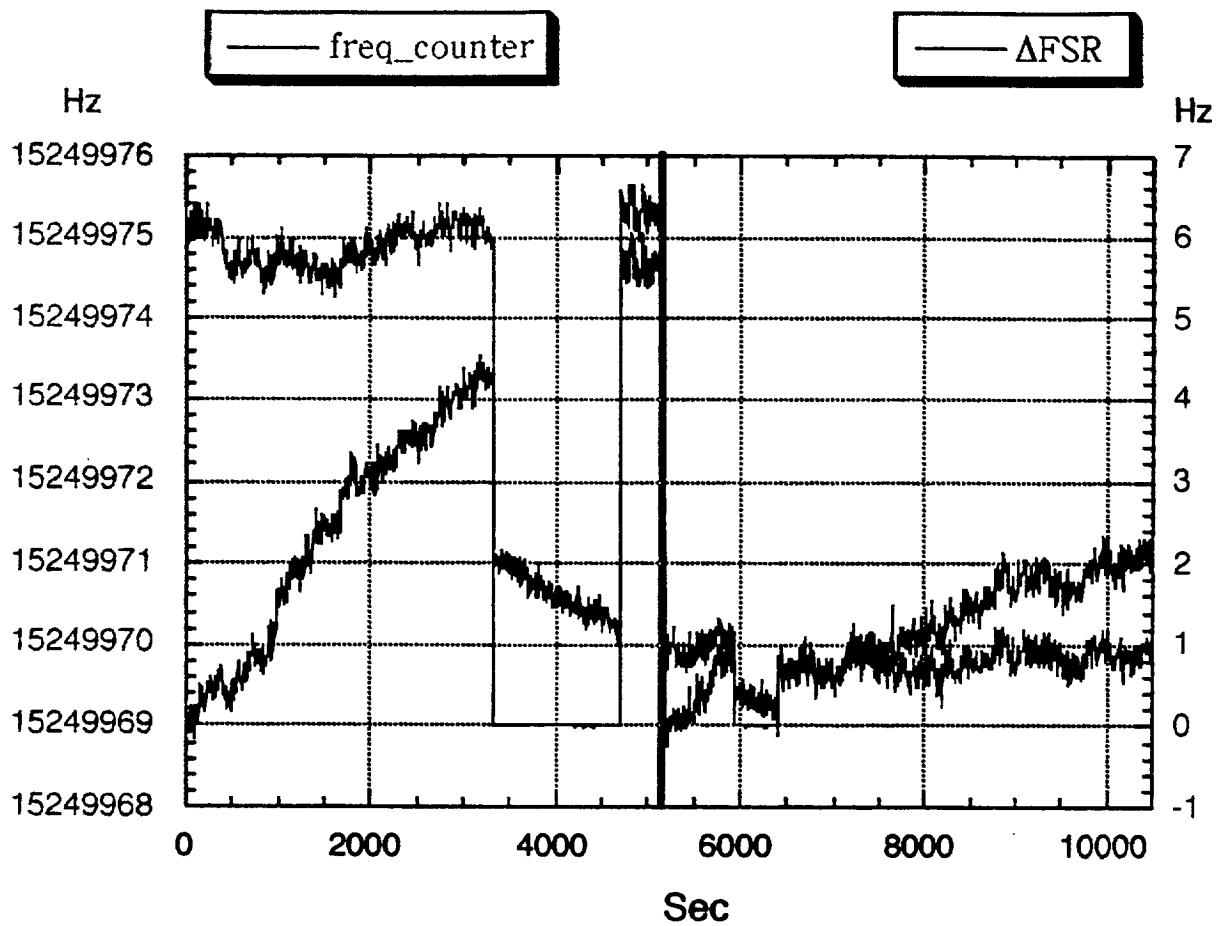
A Panoramic View of Experimental Setup



Another Mirror

in the Mode Cleaner Chambers





$\Delta\nu_{\text{FM}}$

DC

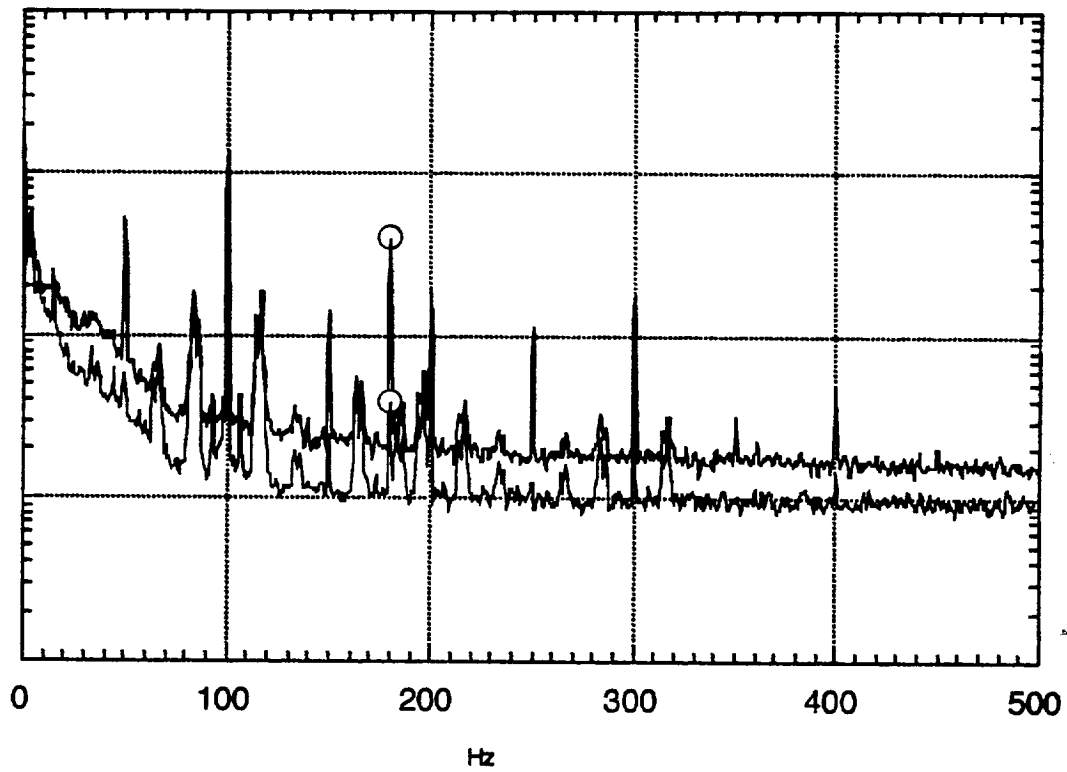
$\Delta\nu_{\text{FSR}}$

180Hz

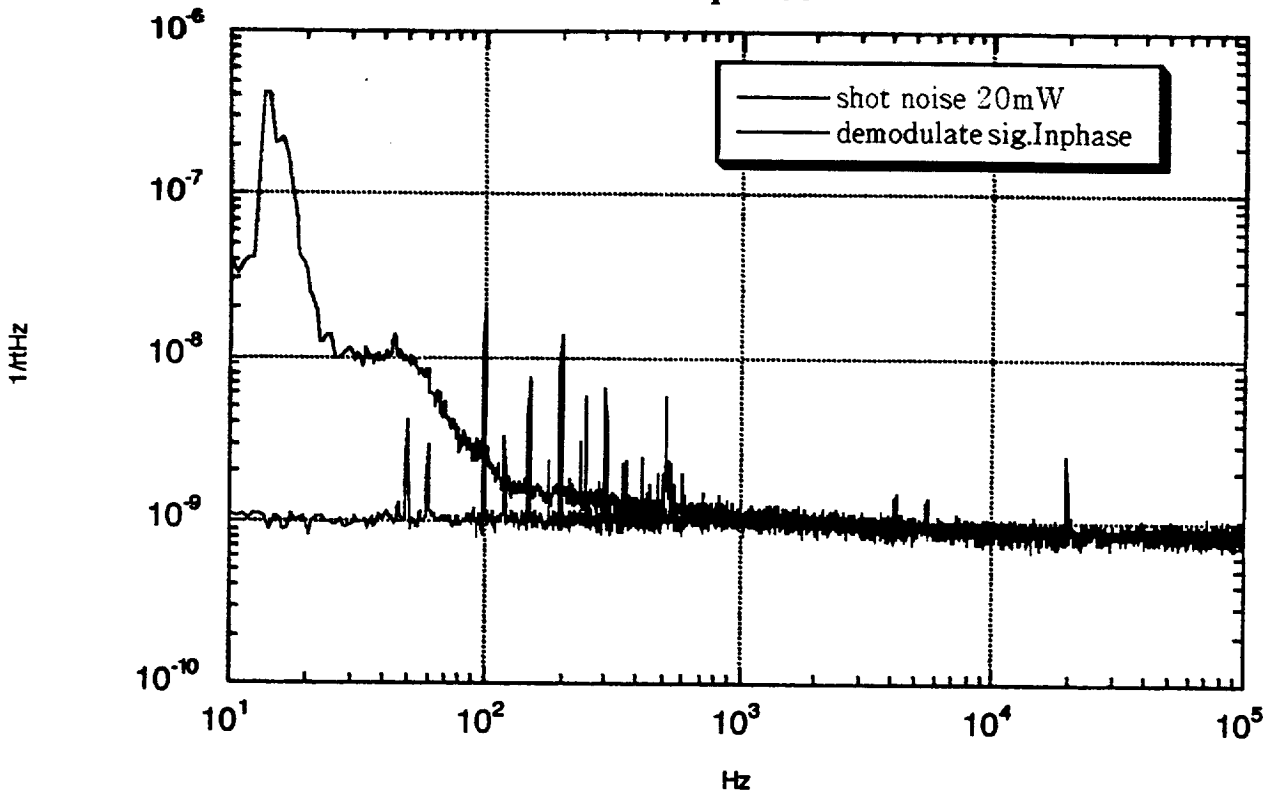
ノイズ

180Hz

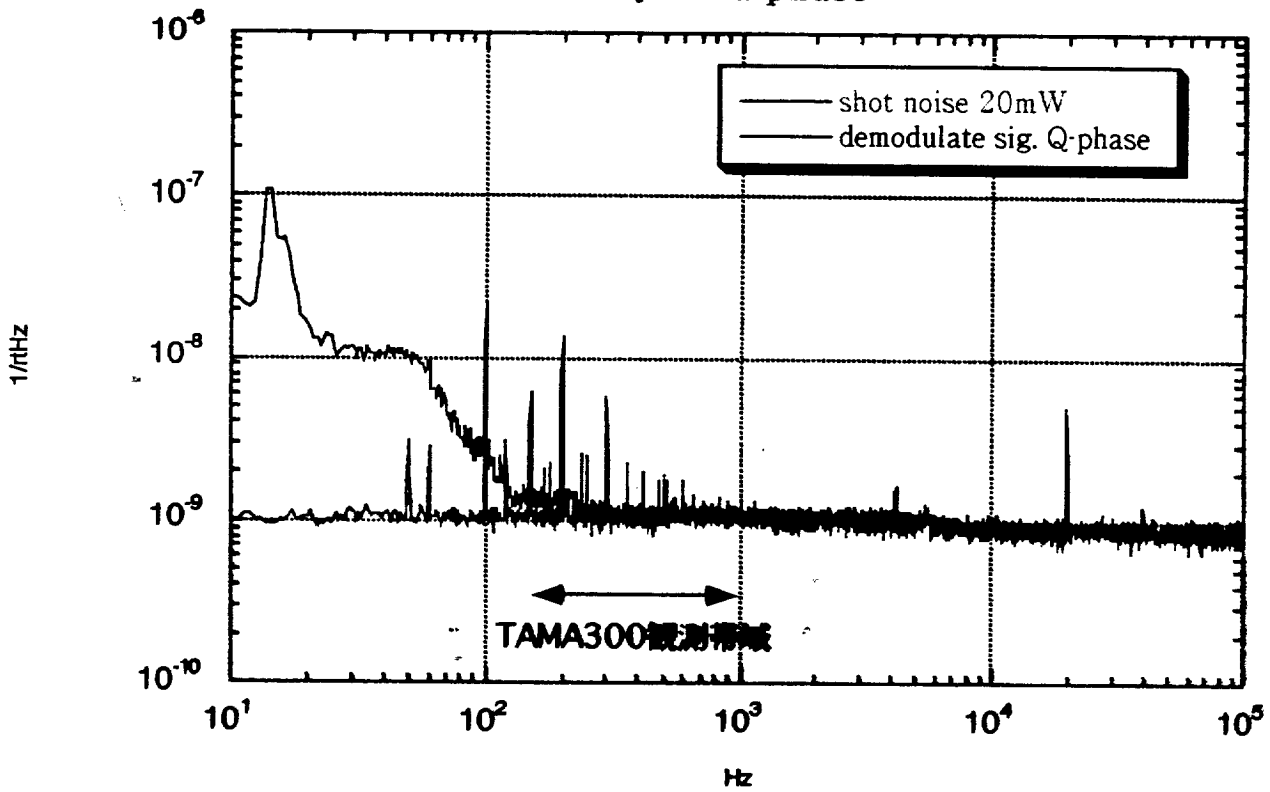
Demodulate Signal (Q-phase)



### Inphase

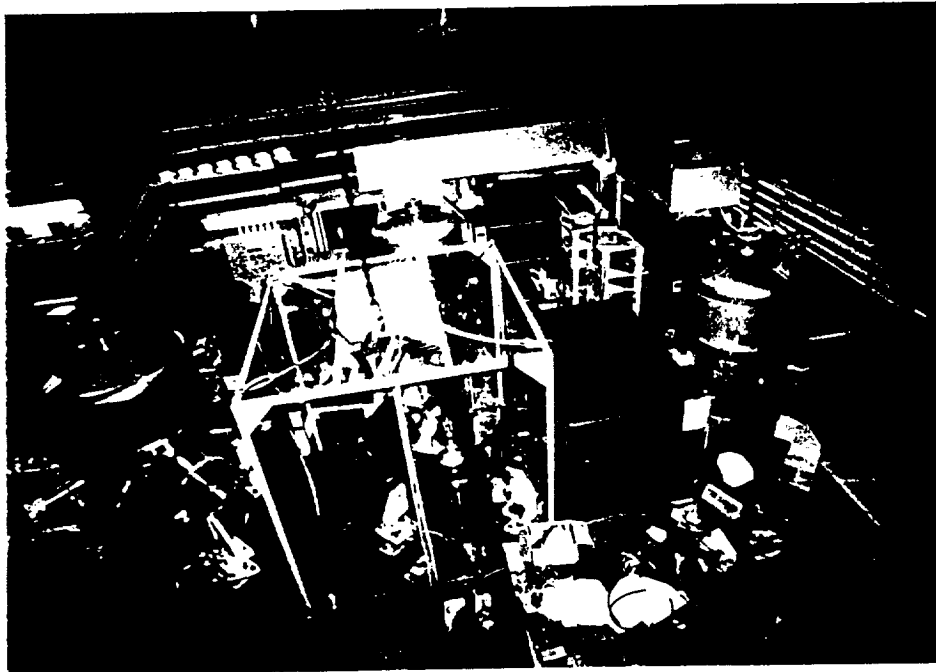


### Quadra-phase



TAMA

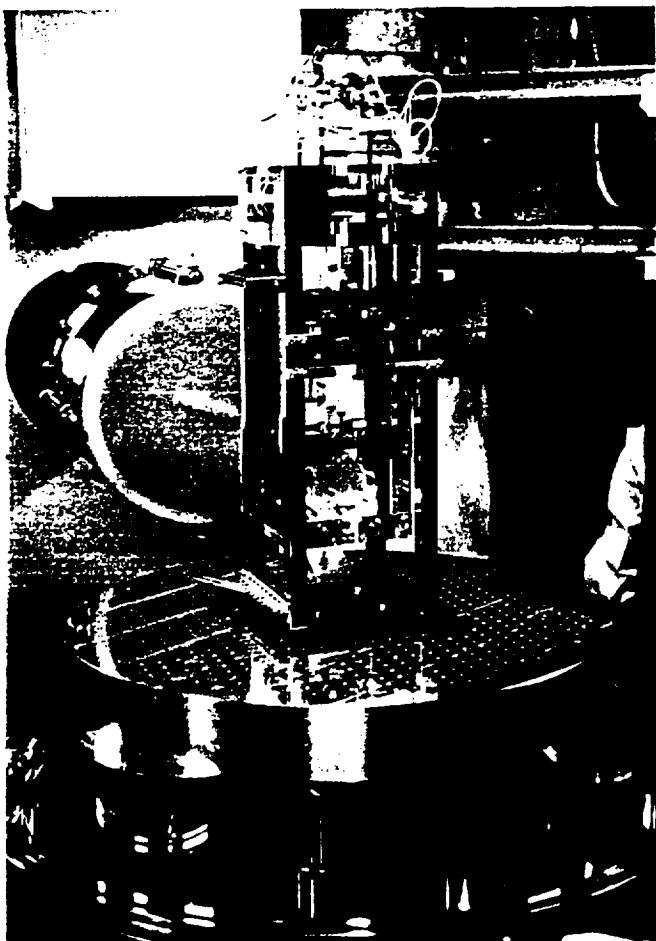
One 300m Arm Fabry-Perot Cavity Experiment



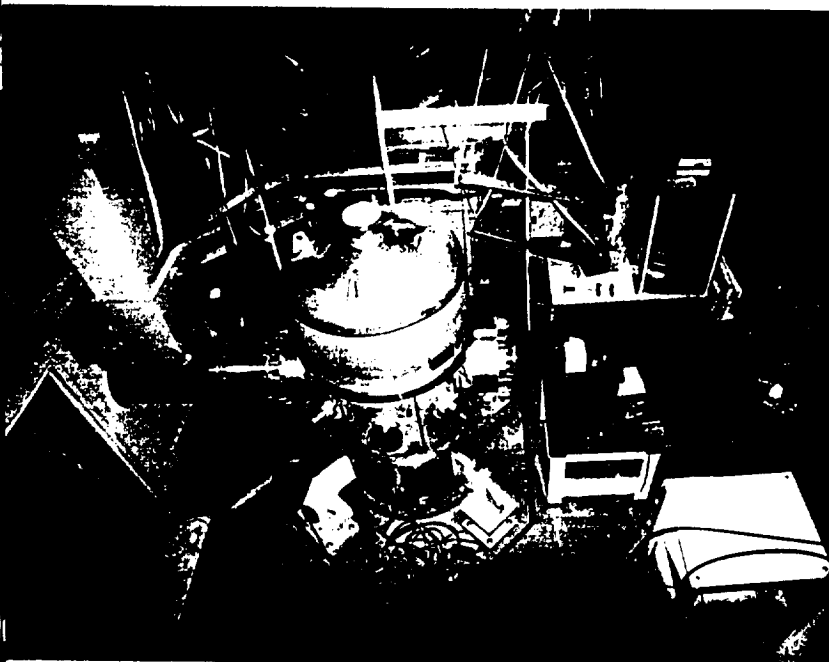
Front Mirror Chamber & Input Optics  
in the Central Building



300m Vacuum Duct

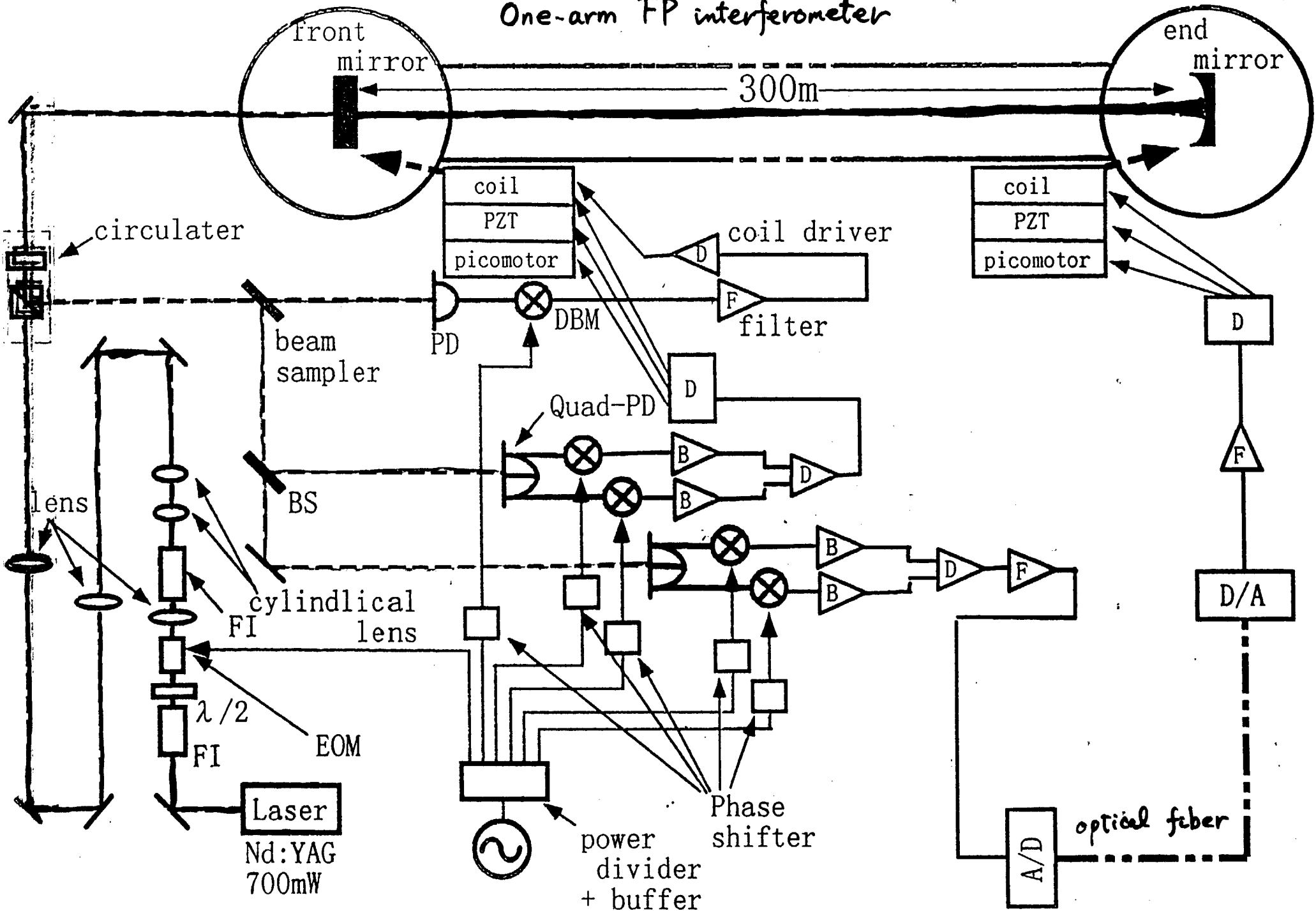


Suspension System for West-end Mirror

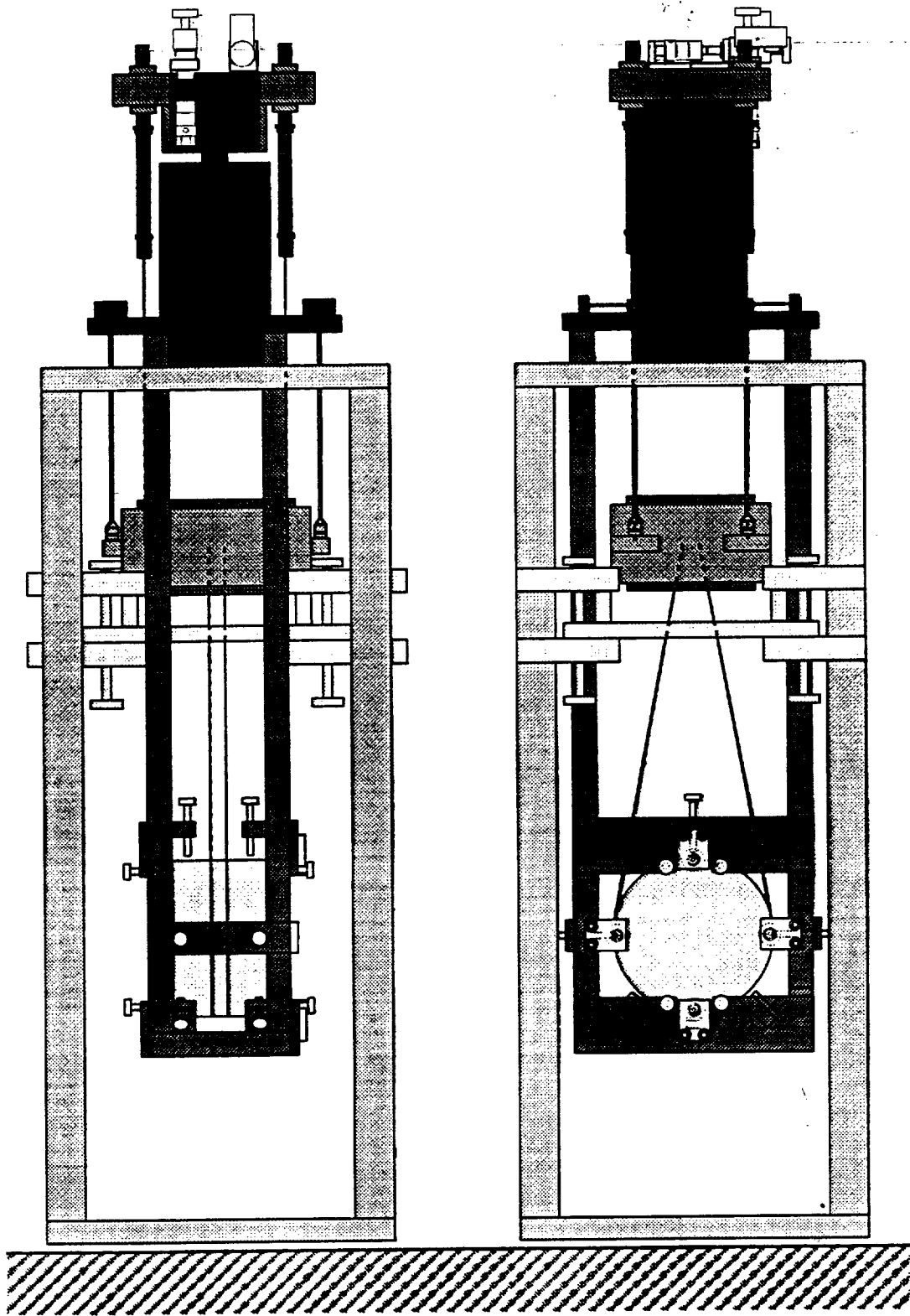


West-end Mirror Chamber  
in the West-end Building

# One-arm FP interferometer

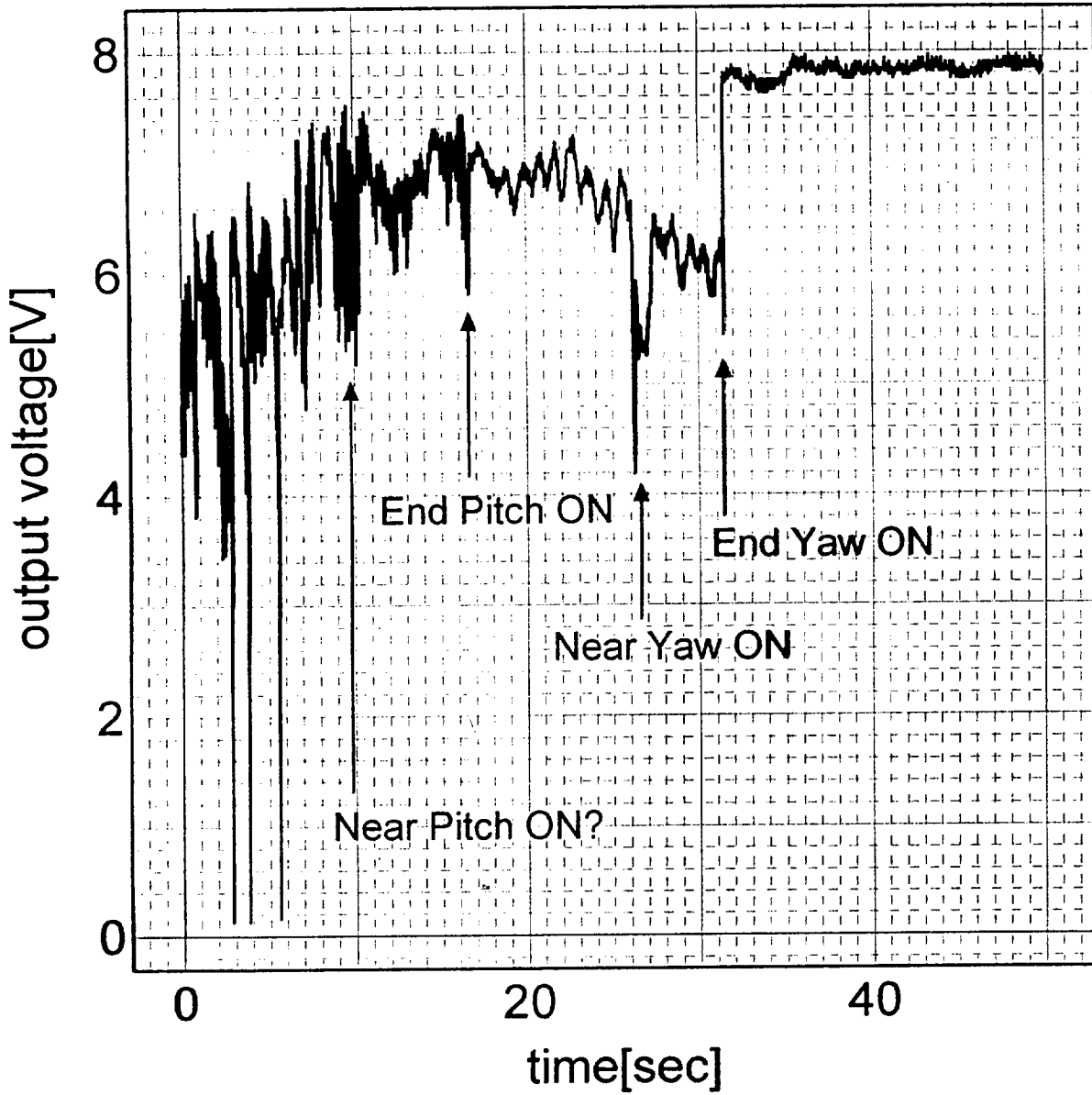






(A. Araya, 98/10/4)  
Modified (K. Arai, 98/11/8)

cavity の透過光強度(FEB27)



*Note 1, Linda Turner, 04/21/98 09:35:44 AM*  
LIGO-G980049-32-M