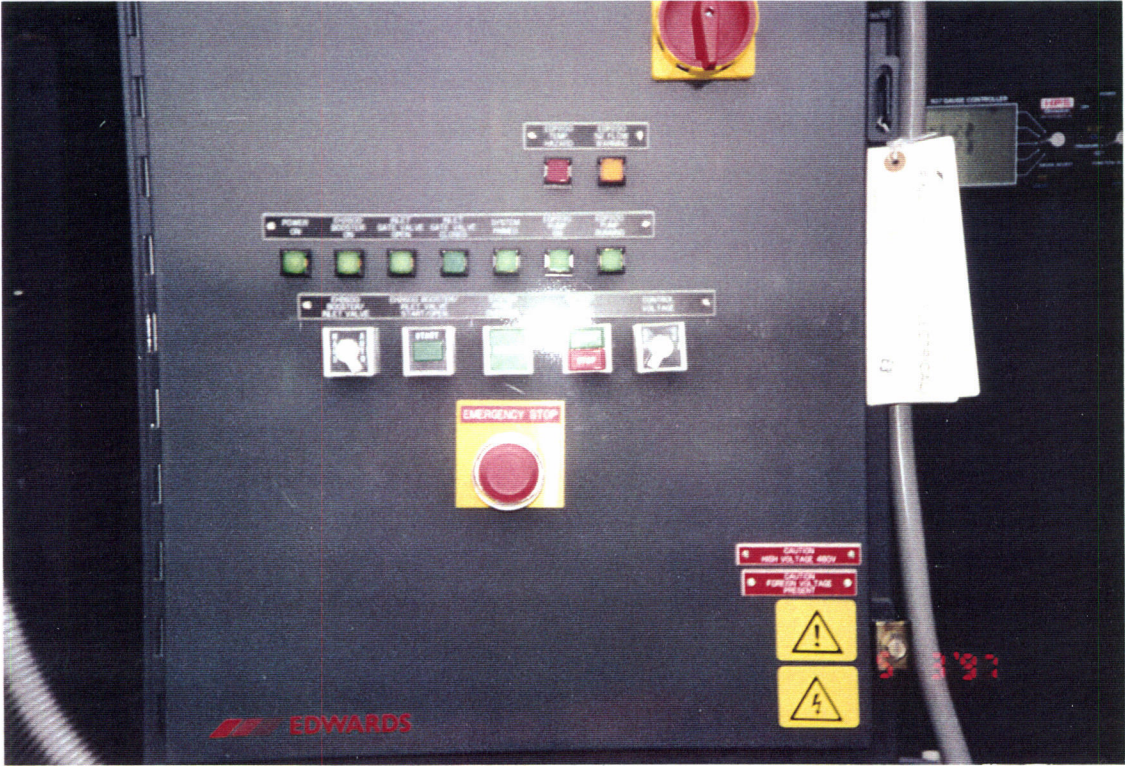


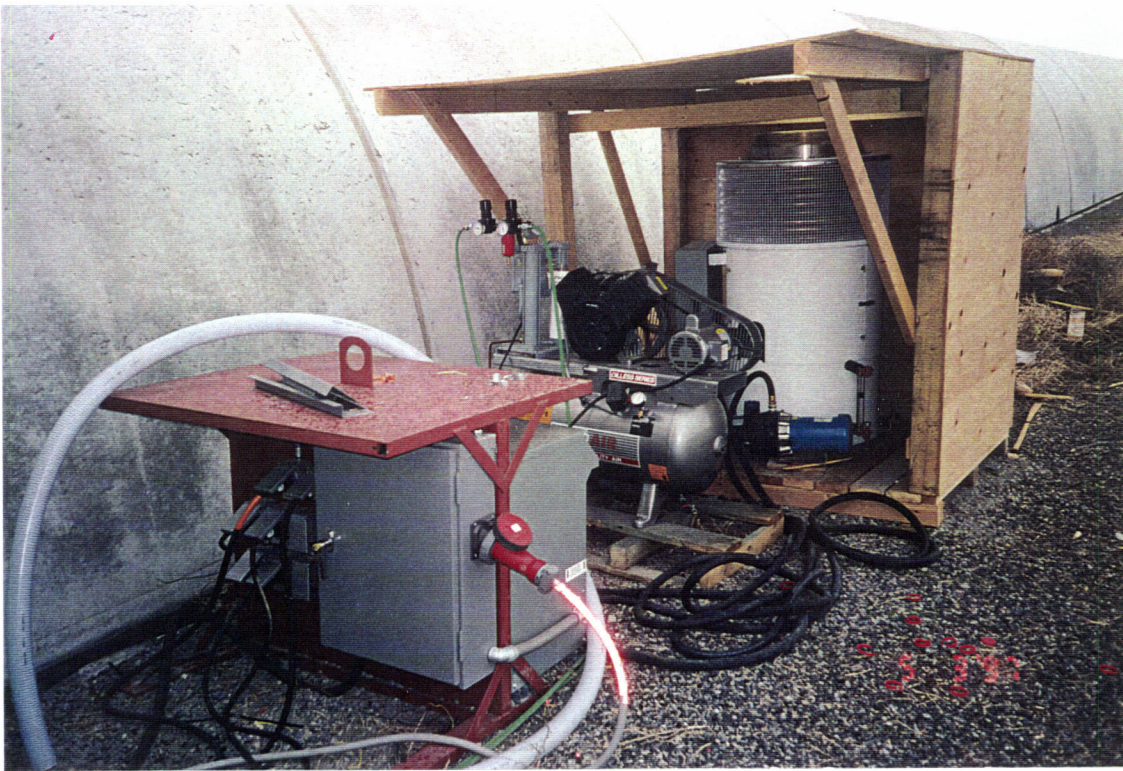
LIGO-G970294-01-B

Turbomechanical Pump Cart
Connected to Type "B" Pump Port
Hardware (5/97)



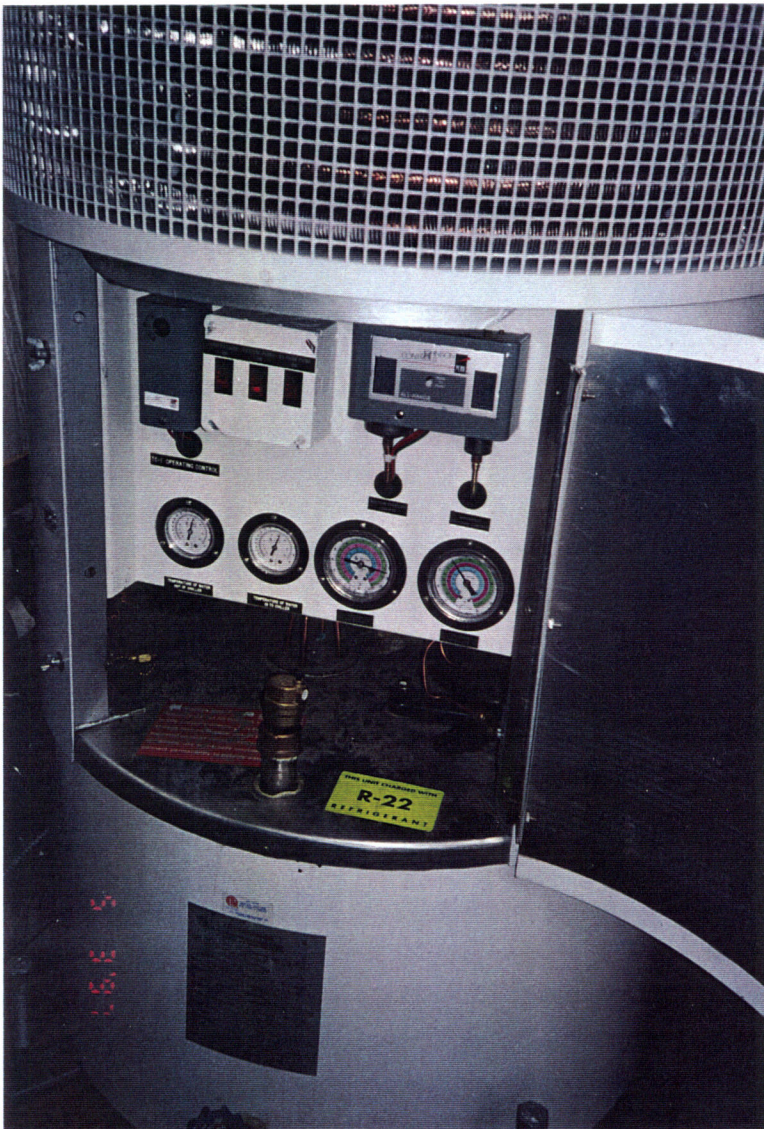
LIGO-G970294-02-B

Beam Tube Roughing Pump Cart
Control Panel (5/97)



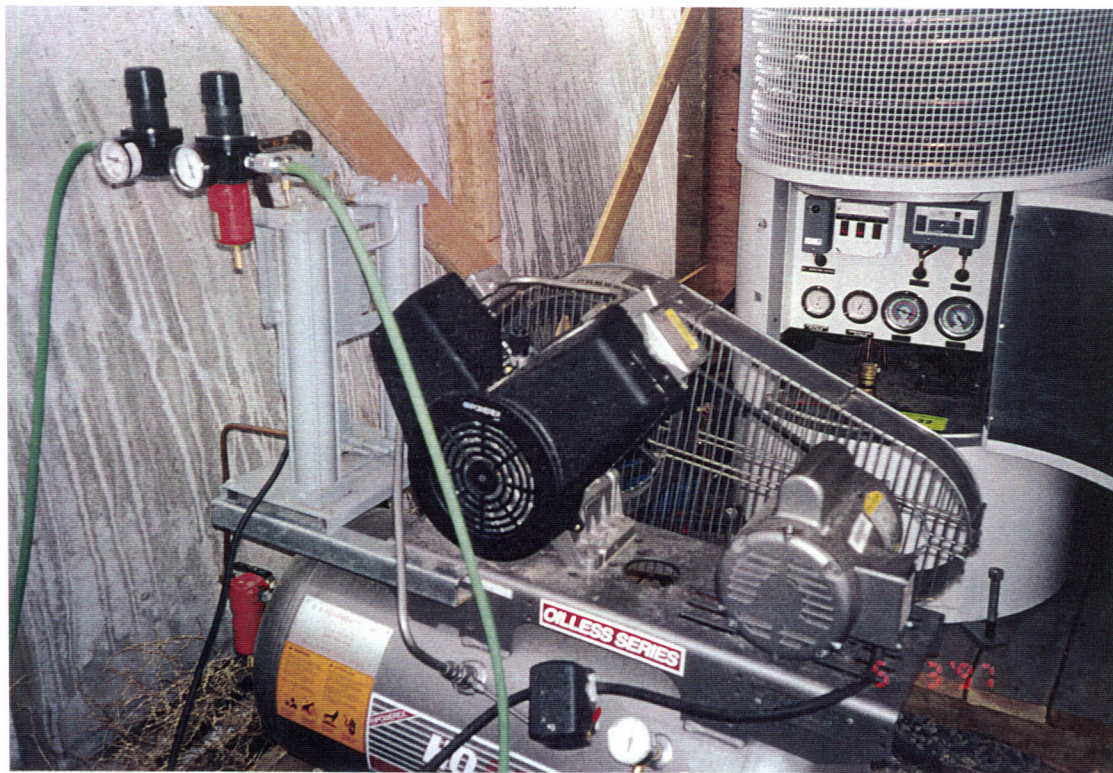
LIGO-G970294-03-B

Chiller, Compressor, and Electrical
Distribution Panel for Beam Tube
Roughing Pump Cart (5/97)



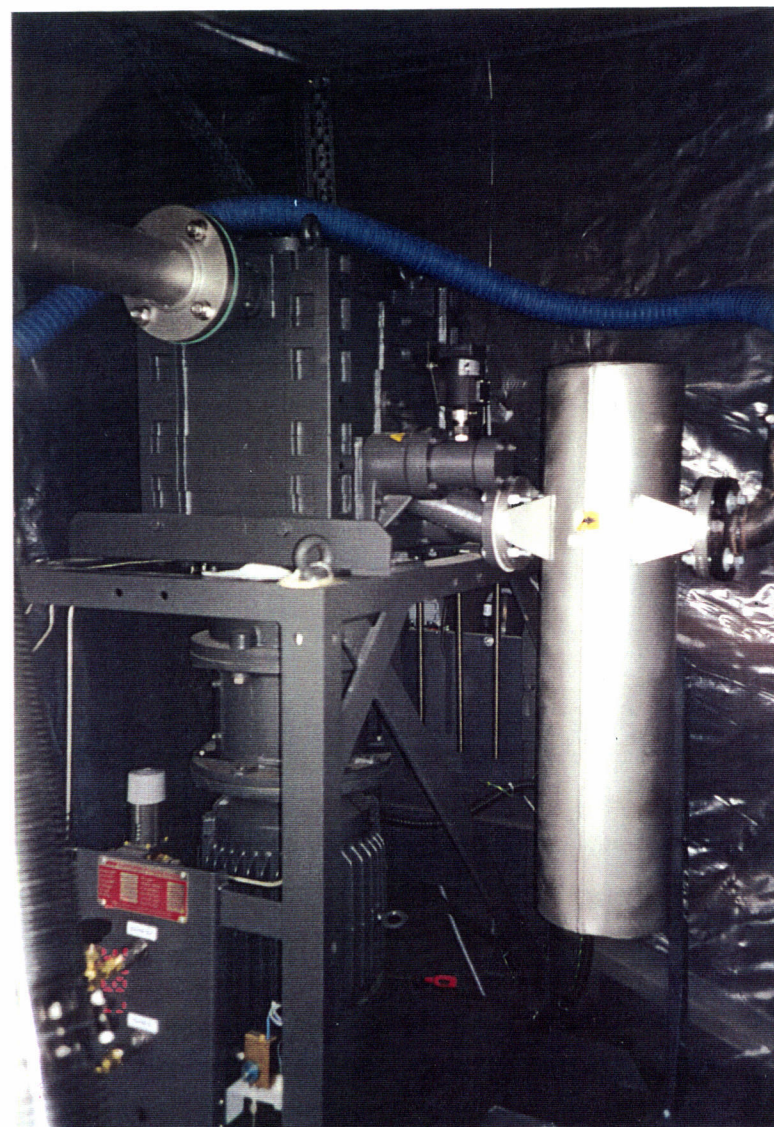
LIGO-G970294-04-B

Chiller Panel for Beam Tube
Roughing Pump Cart (5/97)



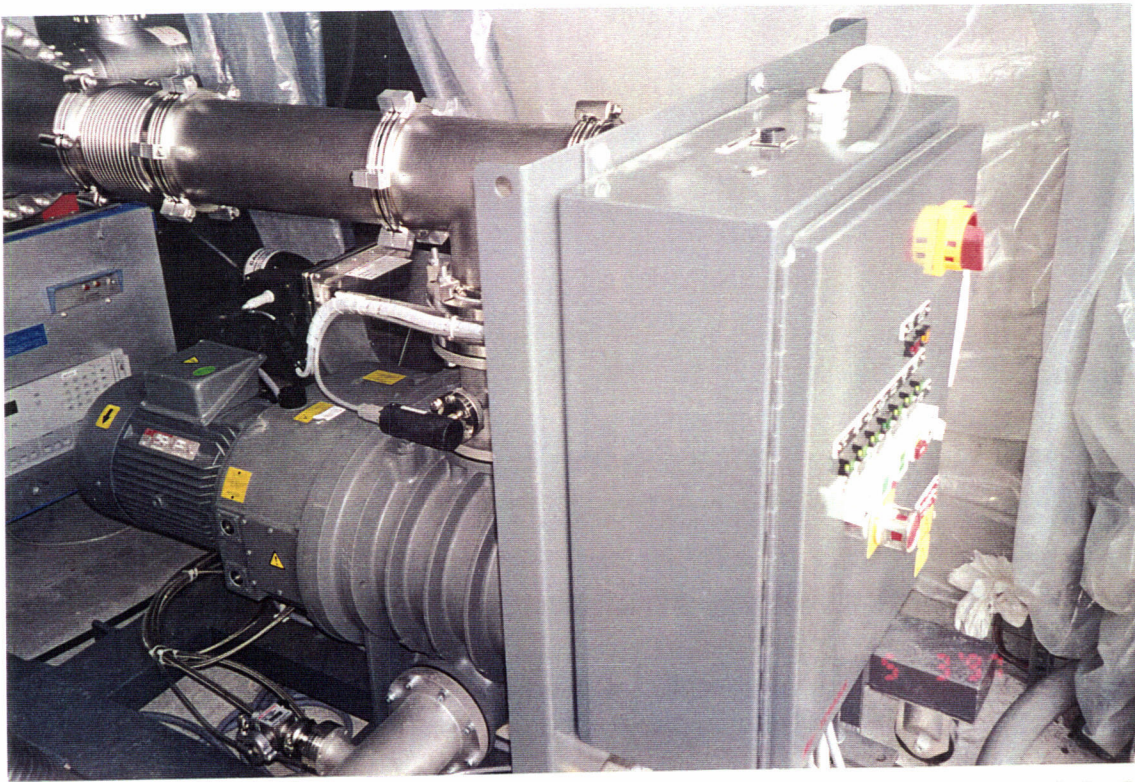
LIGO-G970294-05-B

Compressor with Dryer for Beam
Tube Roughing Pump Cart (5/97)



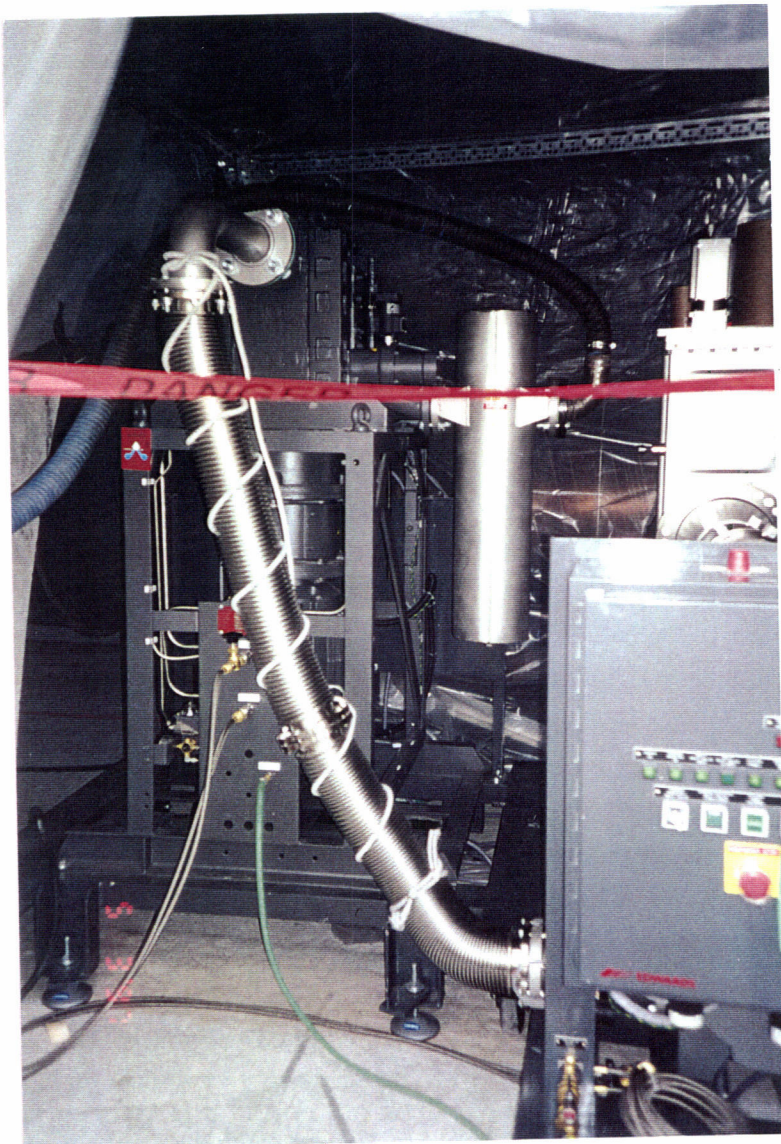
LIGO-G970294-06-B

Backing Pump Cart Portion of Beam
Tube Roughing Pump Cart (5/97)



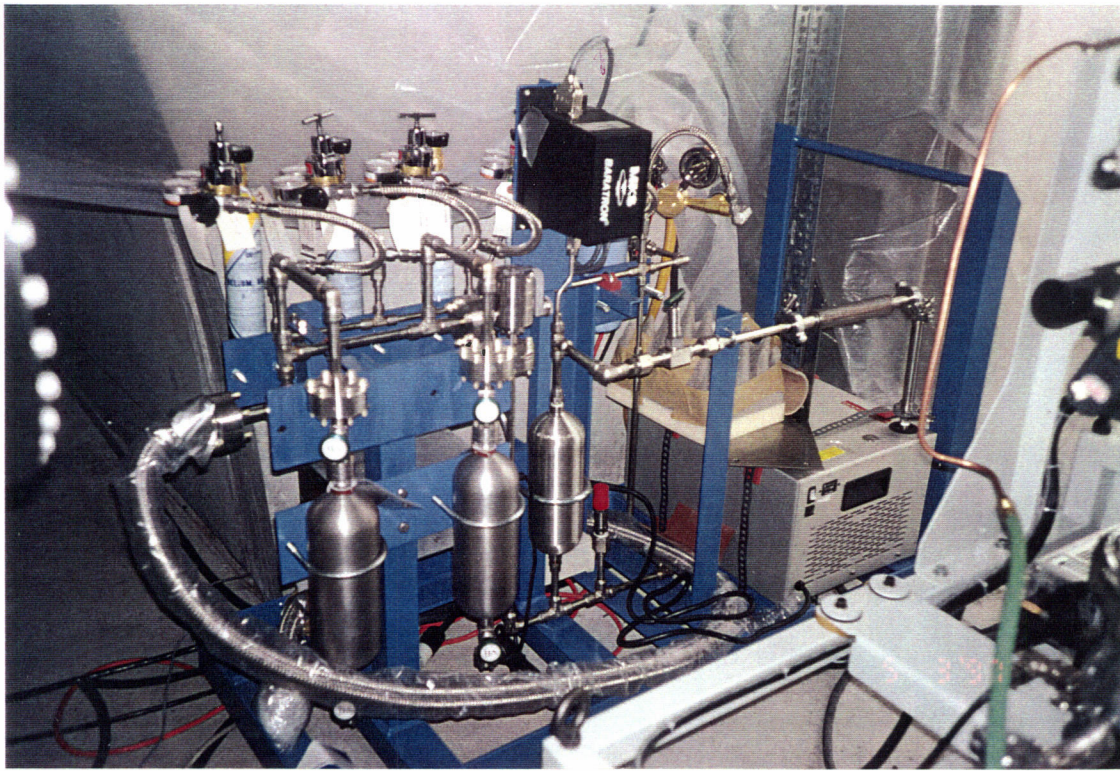
LIGO-G970294-07-B

Rootes Pump Cart Portion of Beam
Tube Roughing Pump Cart (5/97)



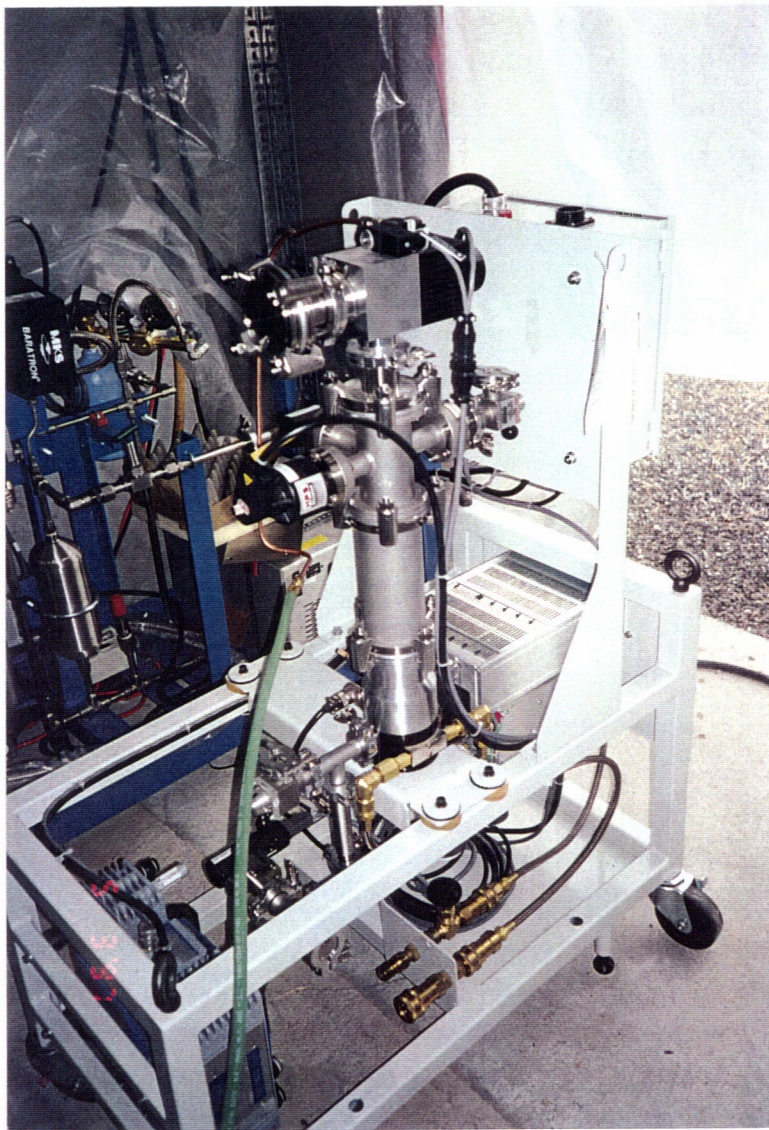
LIGO-G970294-08-B

Interconnection of the Two Portions
of Beam Tube Roughing Pump Cart
(5/97)



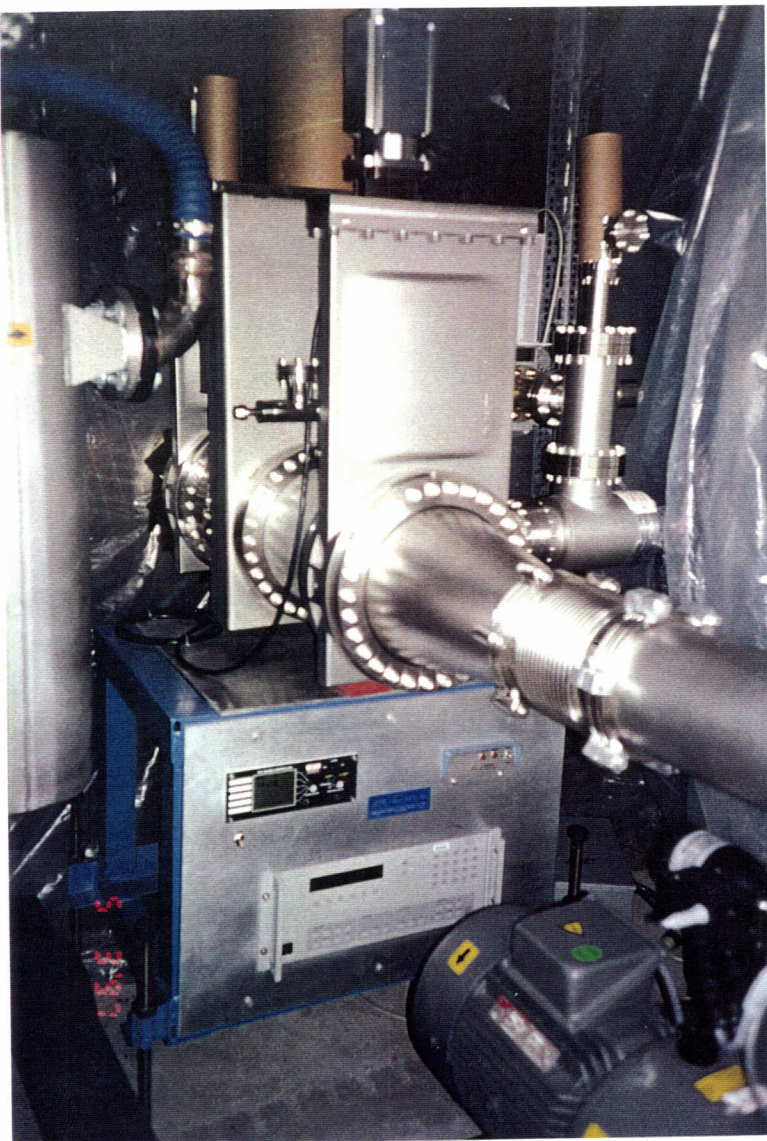
LIGO-G970294-09-B

Beam Tube Leak Check Calibration
Cart (5/97)

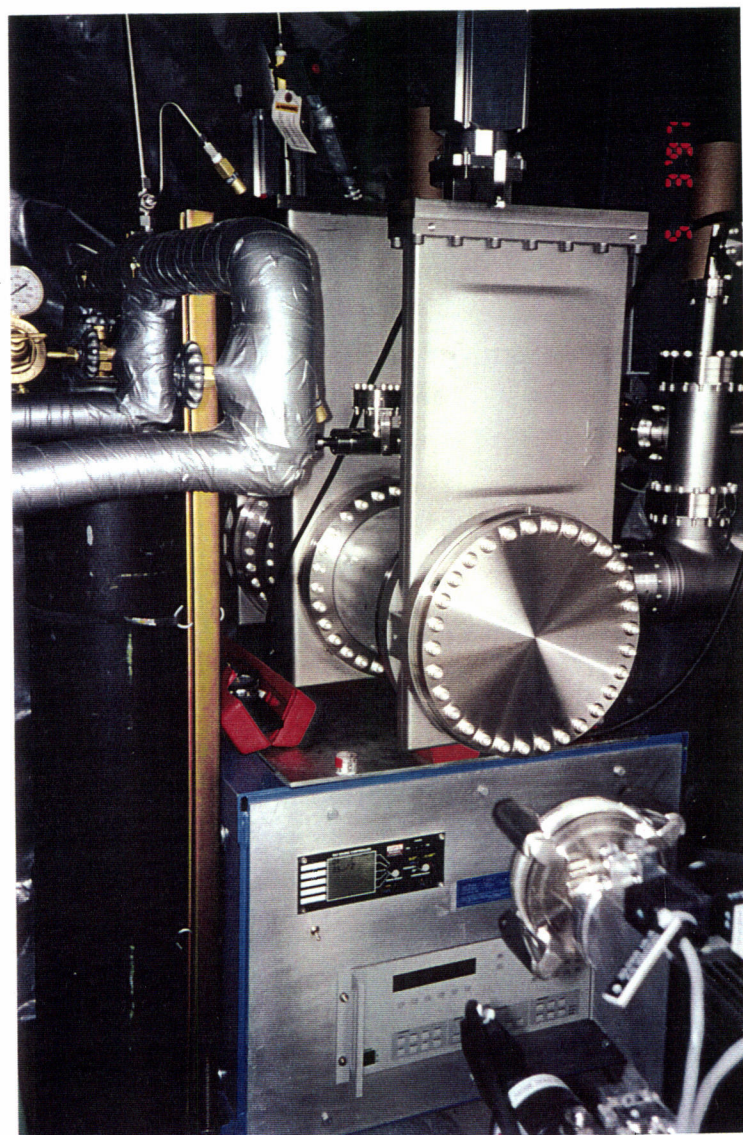


LIGO-G970294-10-B

Beam Tube Auxiliary
Turbomechanical Pump Cart (5/97)



LIGO-G970294-11-B
Beam Tube Type "B" Pump Port
Hardware, with RGA Control Panel
and Showing Roughing Pump Cart
Connection (5/97)



LIGO-G970294-12-B
Beam Tube Type "B" Pump Port
Hardware (5/97)



LIGO-G970294-13-B

Surveyors Checking Elevations at
Hanford Corner Station LVEA (4/97)



LIGO-G970294-14-B

Surveyor Preparing to Check Lateral
Alignment of Beam Tube (4/97)



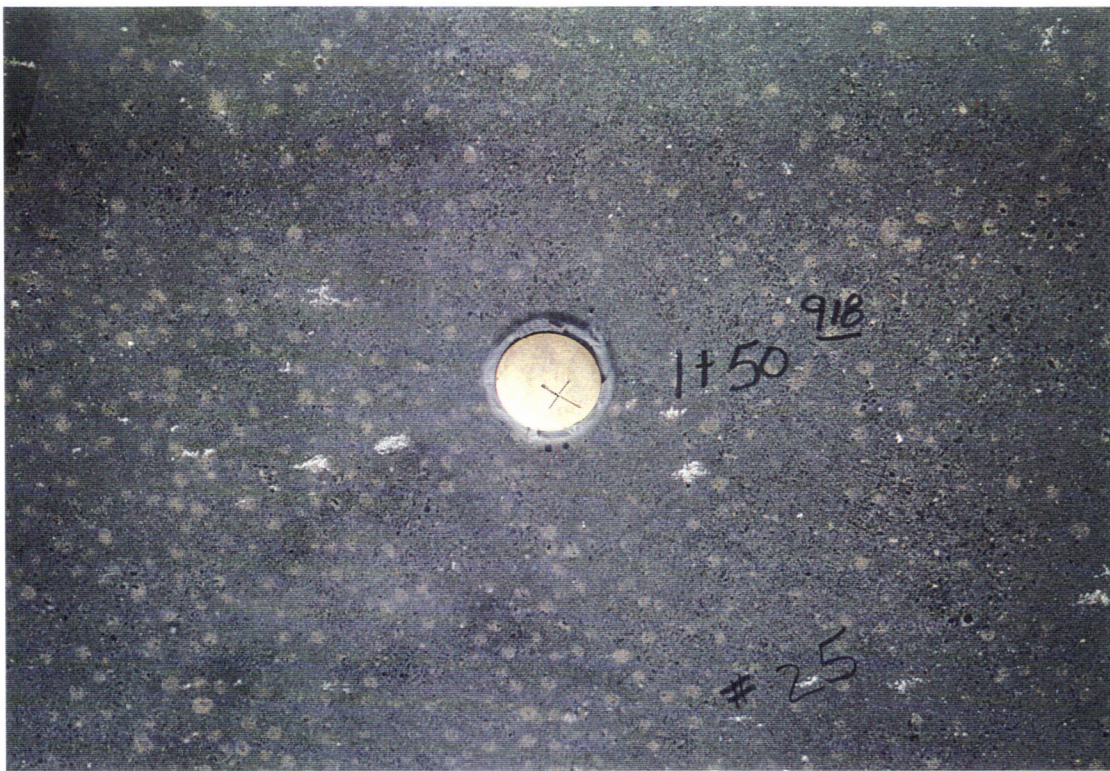
LIGO-G970294-15-B

Surveyor's Offset Target at Beam
Tube Termination (4/97)



LIGO-G970294-16-B

Hanford Mid Station BT/VE Interface
Brass Marker (10/96)



LIGO-G970294-17-B

Hanford Corner Station BT/VE
Interface Brass Marker (1997)



LIGO-G970294-18-B

Hanford Beam Tube "Surveyor's Nail"
at Slab Edge (1997)



LIGO-G970294-19-B

GPS Antenna Checking Position of
Beam Tube "Surveyor's Nail" (1997)



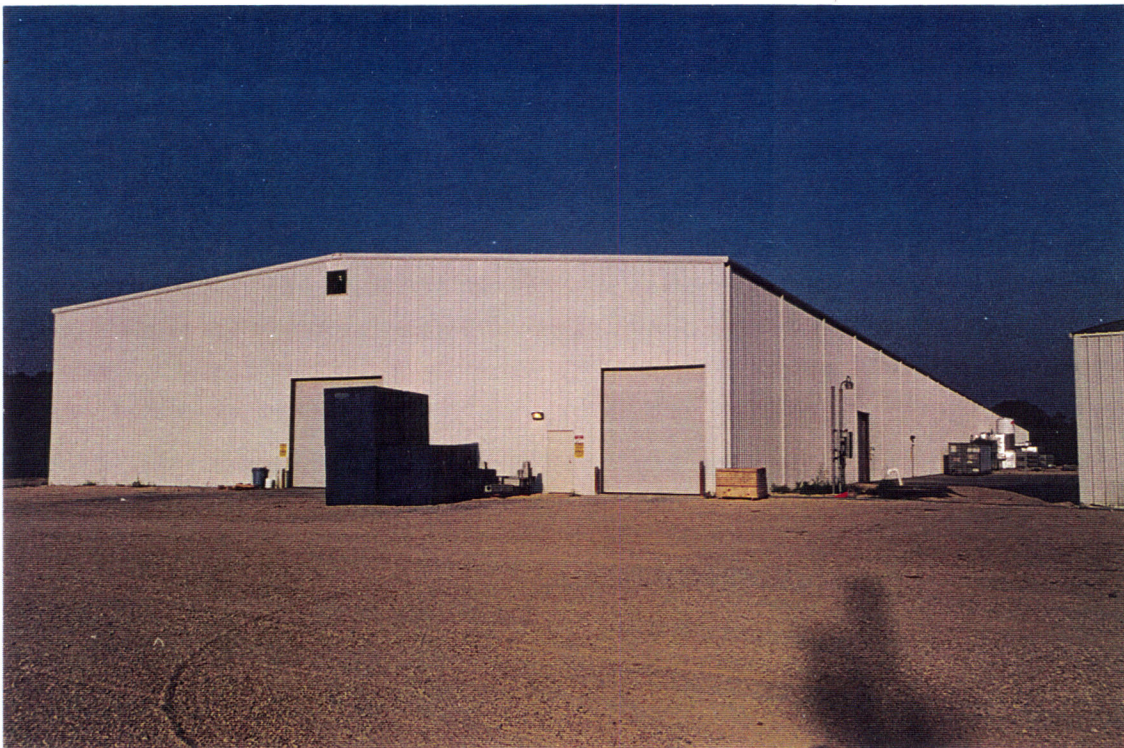
LIGO-G970294-20-B

GPS Antenna Mounted on Beam
Tube Support Ring (1997)



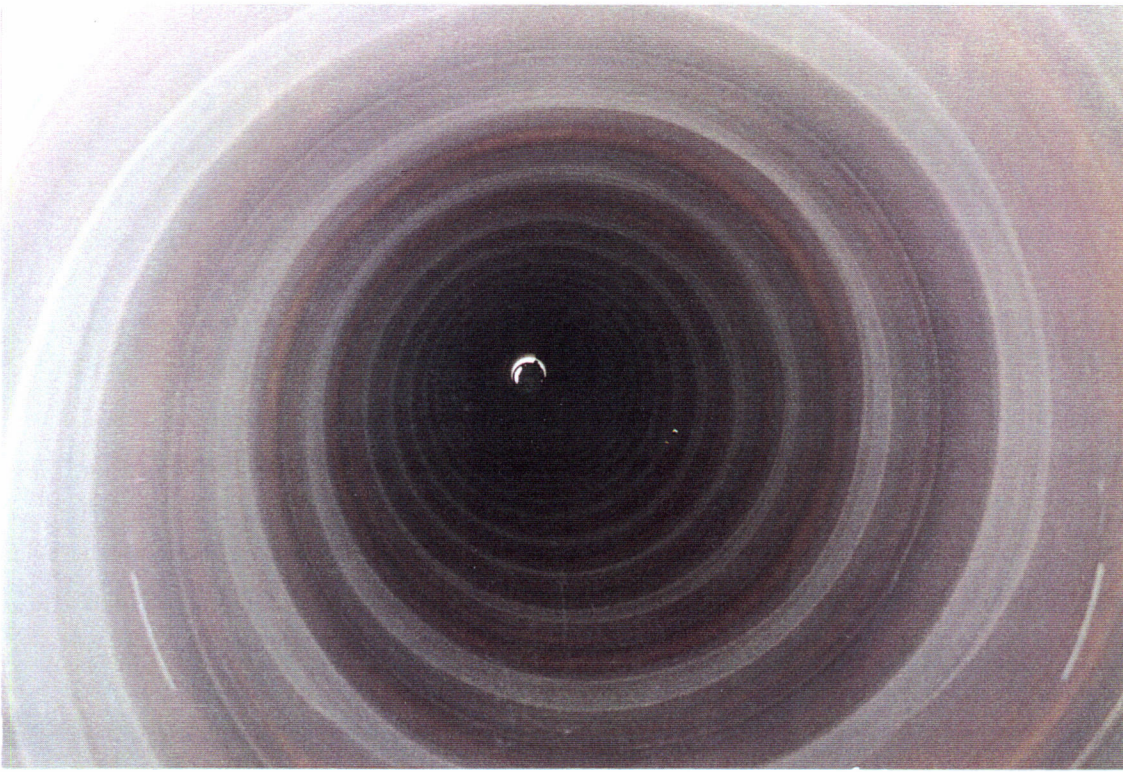
LIGO-G970294-21-B

GPS Antenna Mounted on Beam
Tube Support Ring (1997)



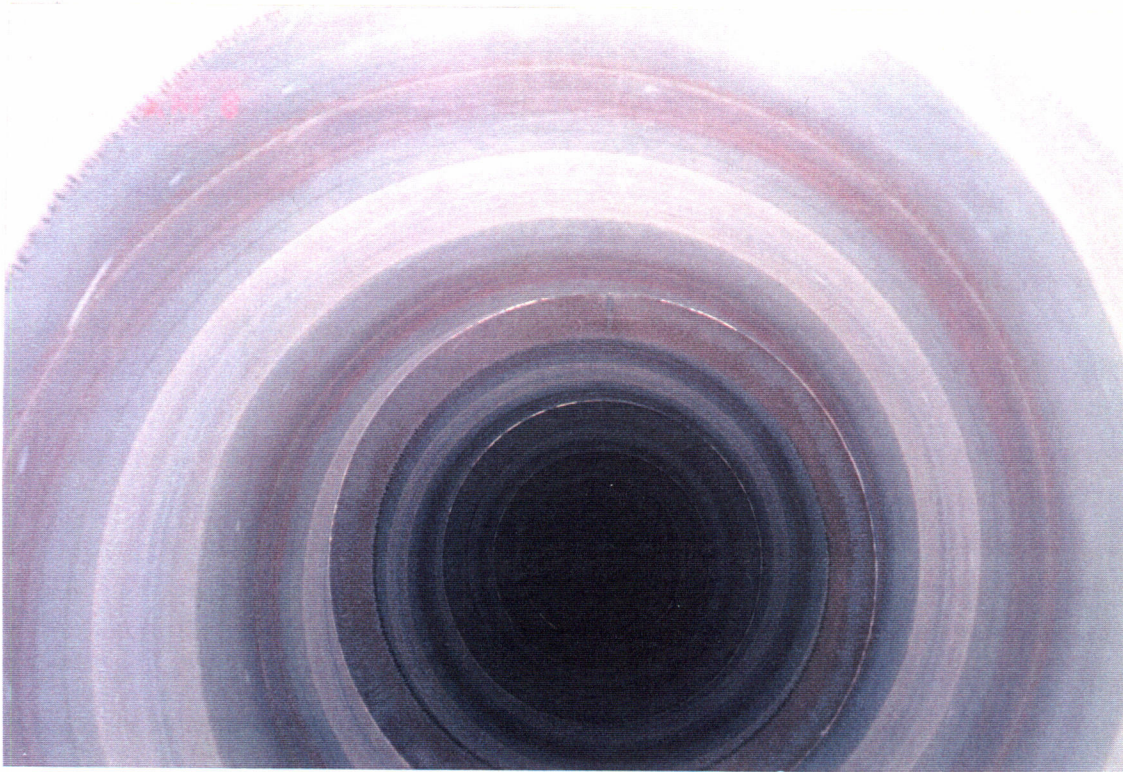
LIGO-G970294-22-B

Beam Tube Fabrication Facility at
Magnolia Beach, Louisiana (~10/97)



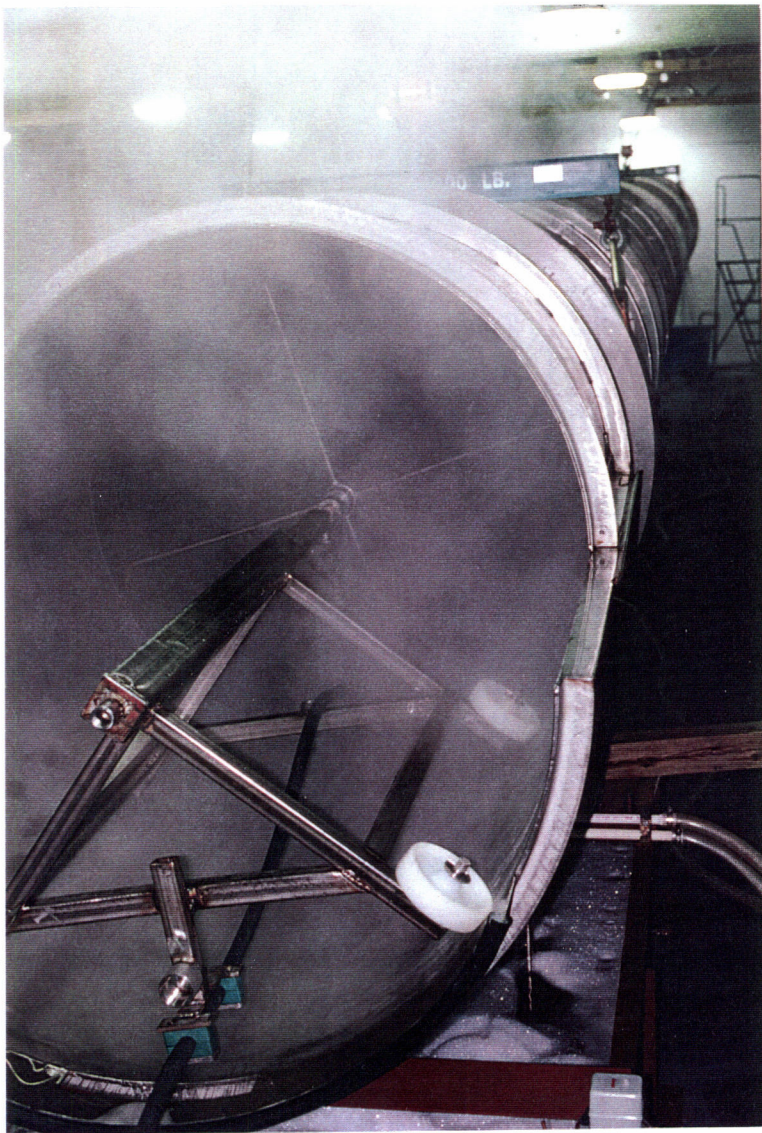
LIGO-G970294-23-B

A View Inside the Beam Tube (~4/97)



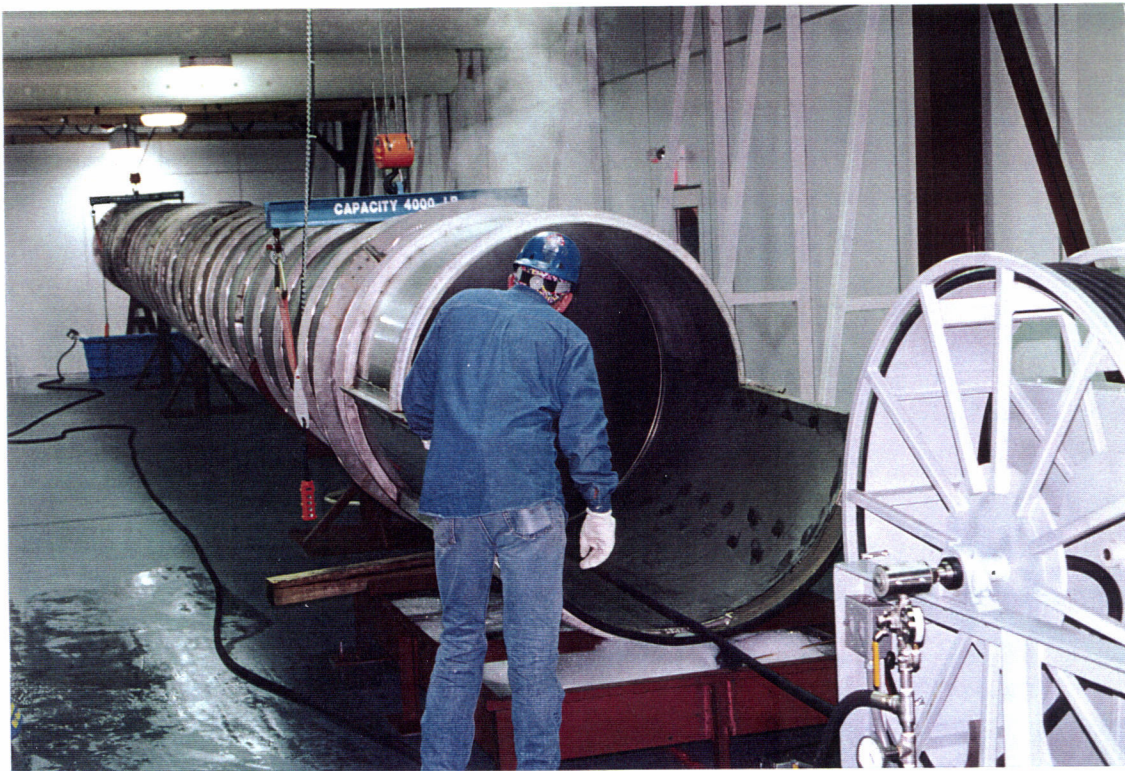
LIGO-G970294-24-B

A View Inside the Beam Tube (~4/97)



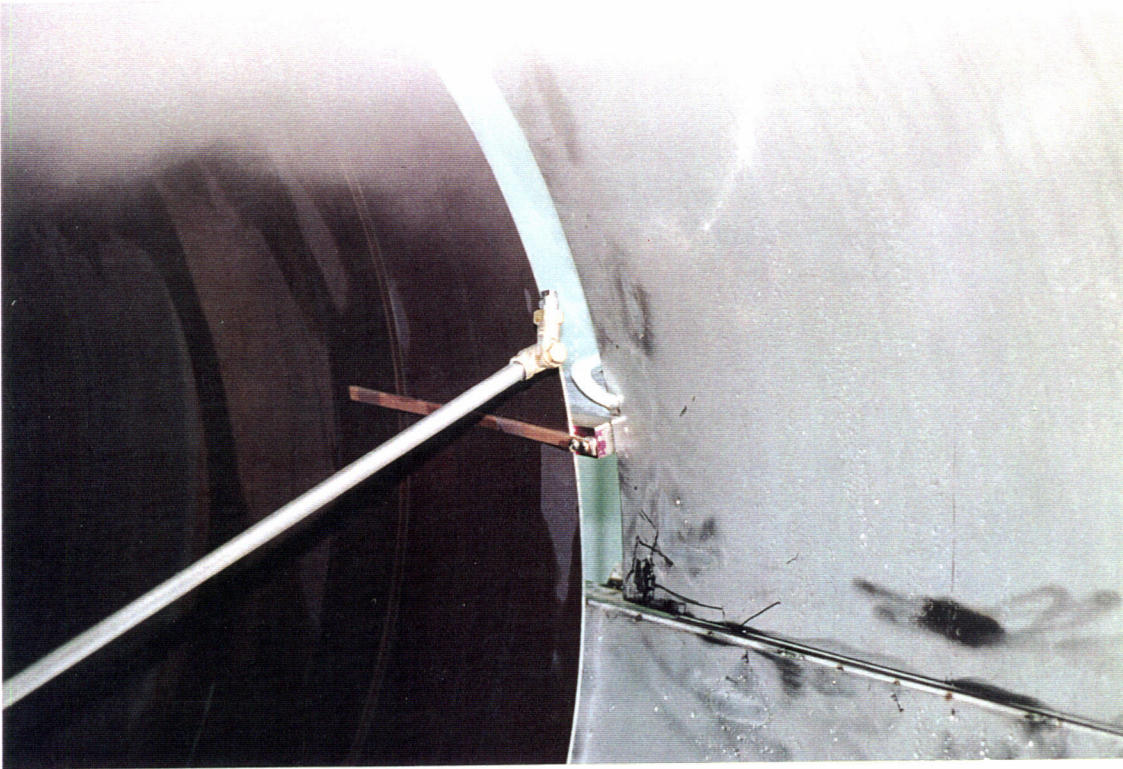
LIGO-G970294-25-B

Spray Rig for Cleaning Beam Tube Sections at Big Pasco (10/96)



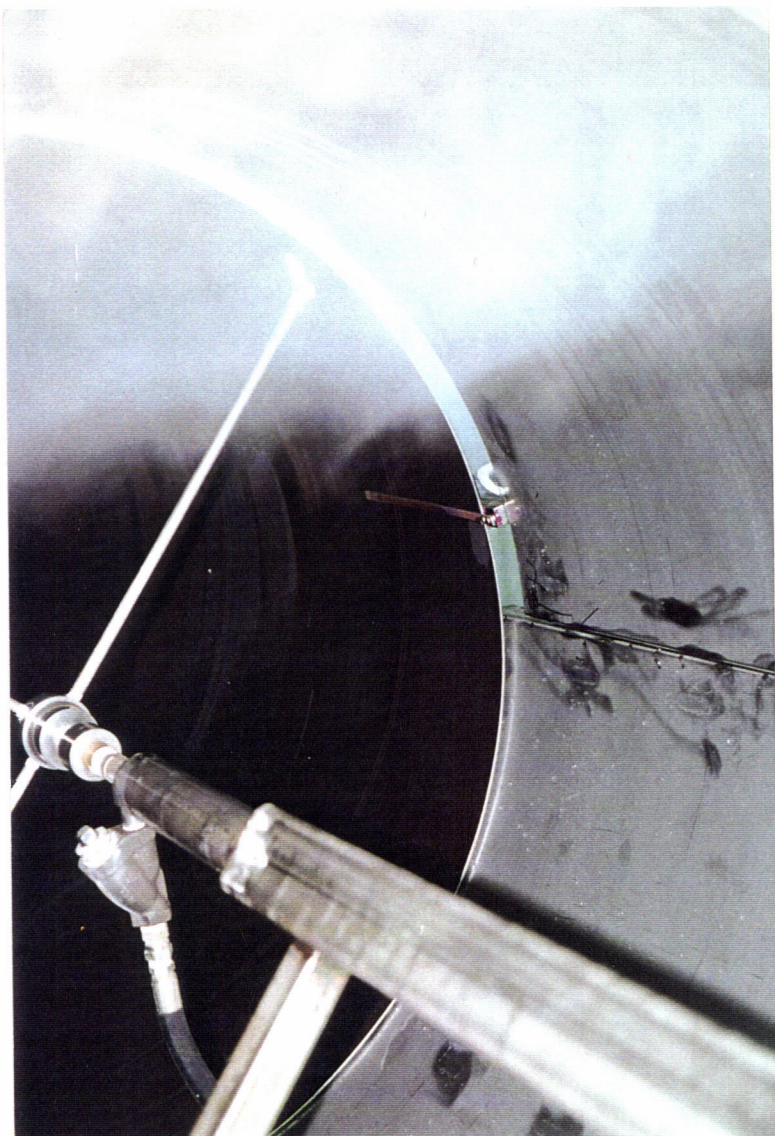
LIGO-G970294-26-B

Cleaning a Beam Tube Section at Big Pasco (10/96)



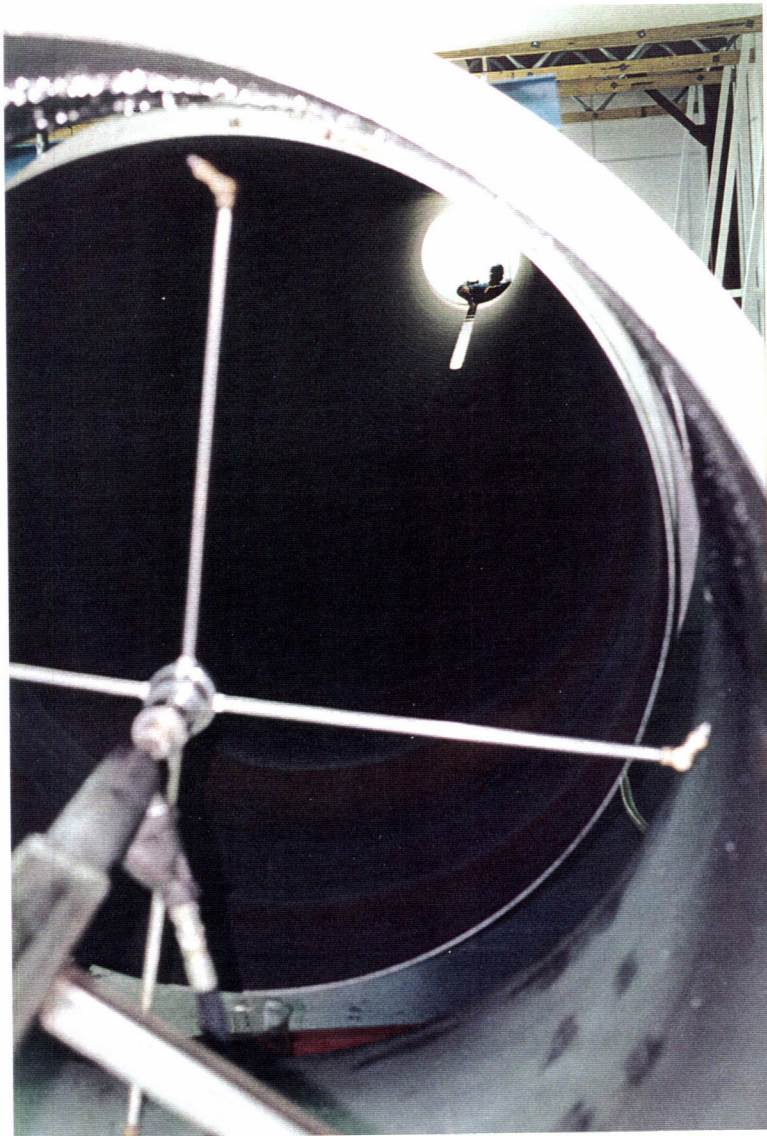
LIGO-G970294-27-B

Spray Wand and Cleaning Coupon at
Big Pasco (10/96)



LIGO-G970294-28-B

Spray Wand and Cleaning Coupon at
Big Pasco (10/96)

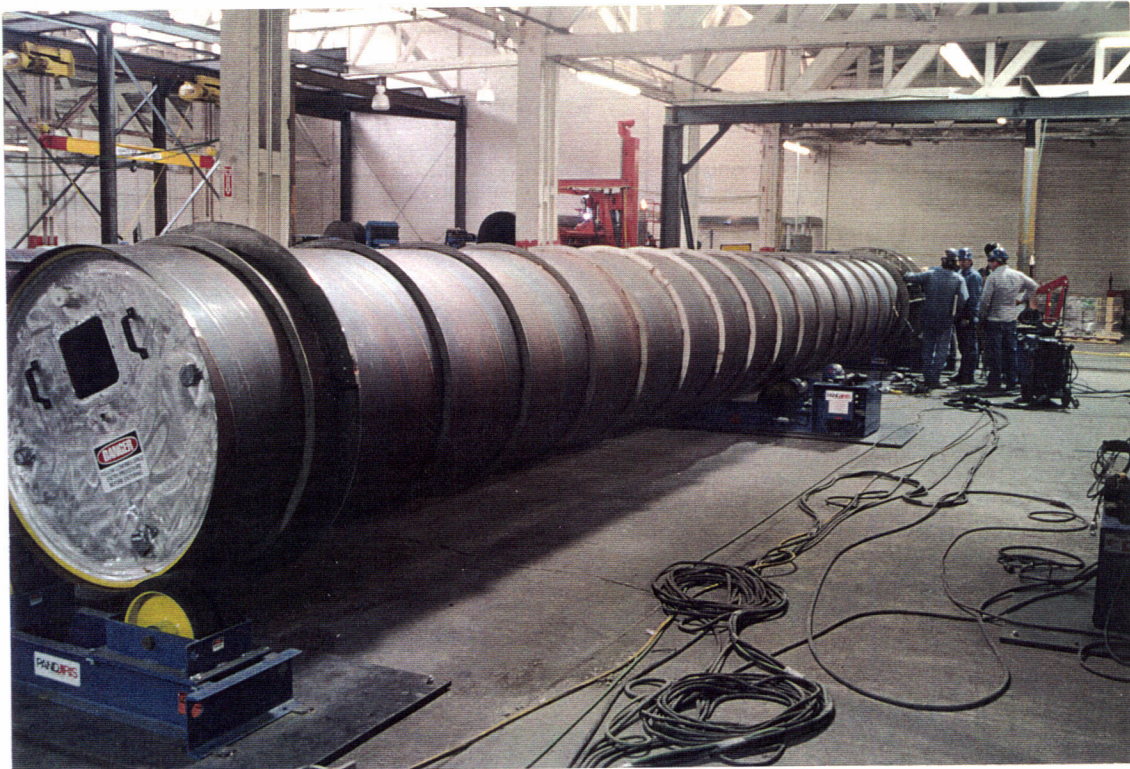


LIGO-G970294-29-B

Pouring an Alcohol Sample Through
a Cleaned Beam Tube Section for
FTIR Analysis (10/96)

LIGO-G970294-30-B

Stiffening Ring Weld Area at Big
Pasco (9/96)

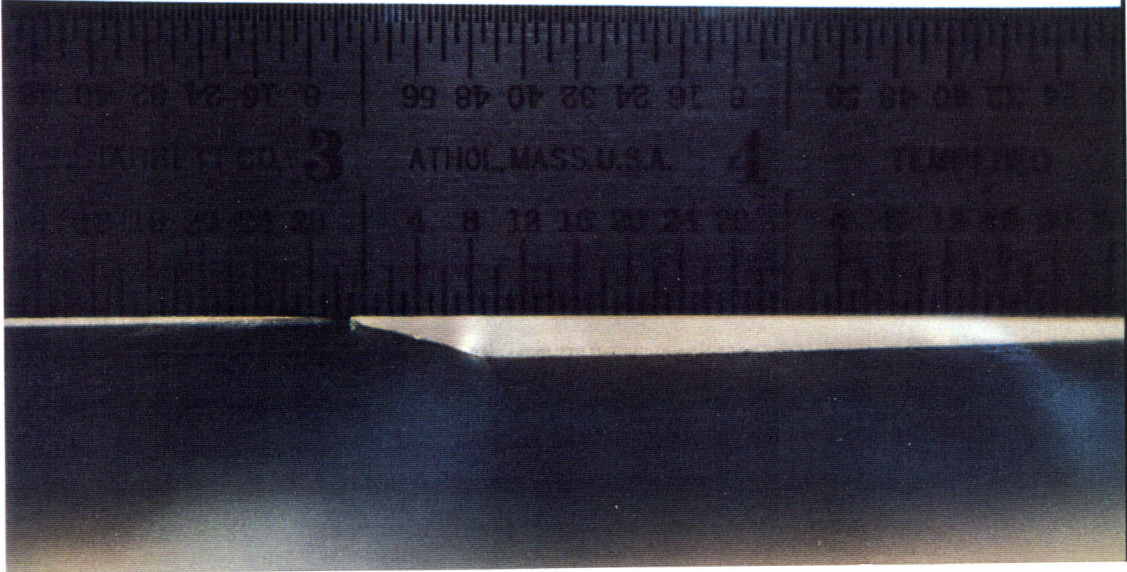


LIGO-G970294-31-B

Beam Tube Section Leak Test
Casket at Big Pasco (9/96)

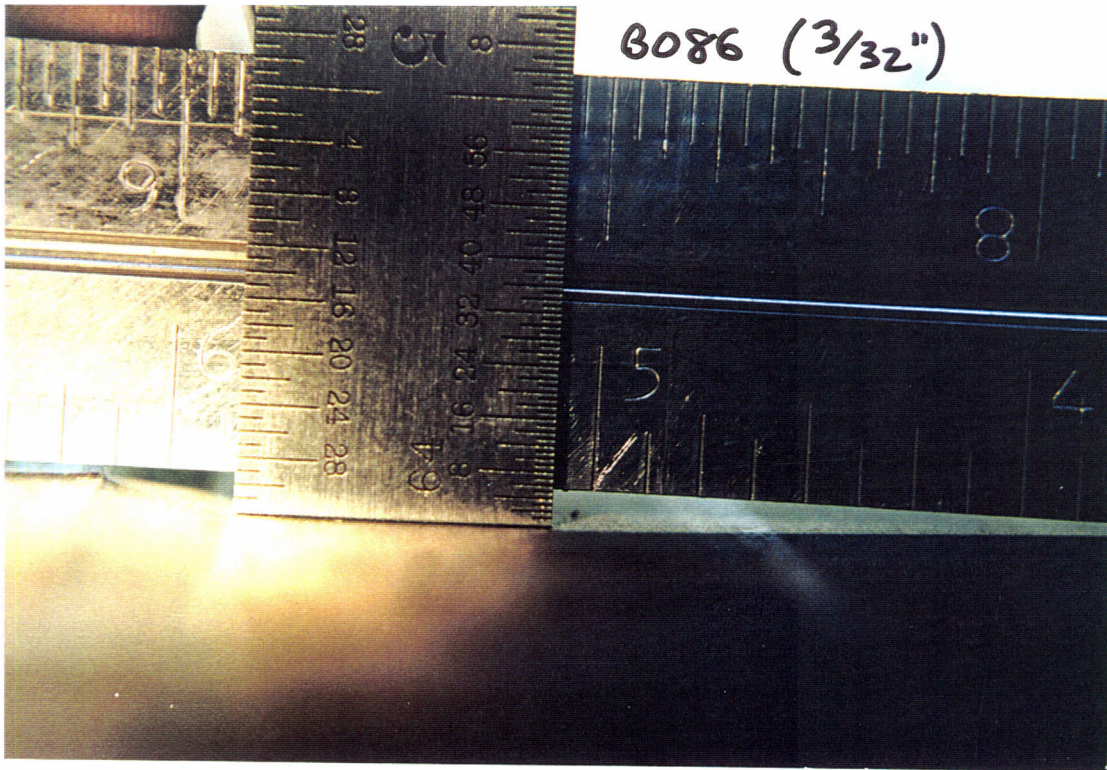


B086 (3/32")



LIGO-G970294-32-B

Beam Tube Spiral Weld Mismatch
B086, Outside (2/97)



LIGO-G970294-33-B

Beam Tube Spiral Weld Mismatch:
B086, Outside (2/97)



LIGO-G970294-34-B

Beam Tube Spiral Weld Mismatch:
B086, Outside (2/97)

B086 W/TEMPLATE



LIGO-G970294-35-B

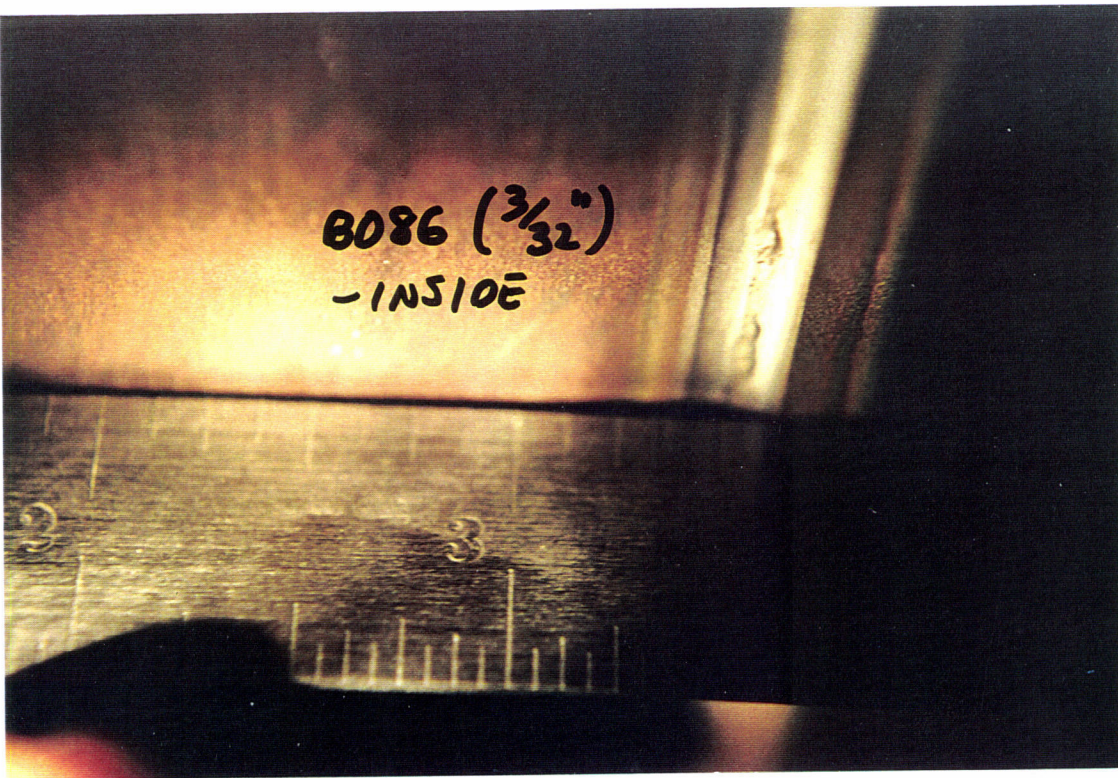
Beam Tube Spiral Weld Mismatch:
B086, Outside (2/97)



B086 ($\frac{3}{32}$ ")

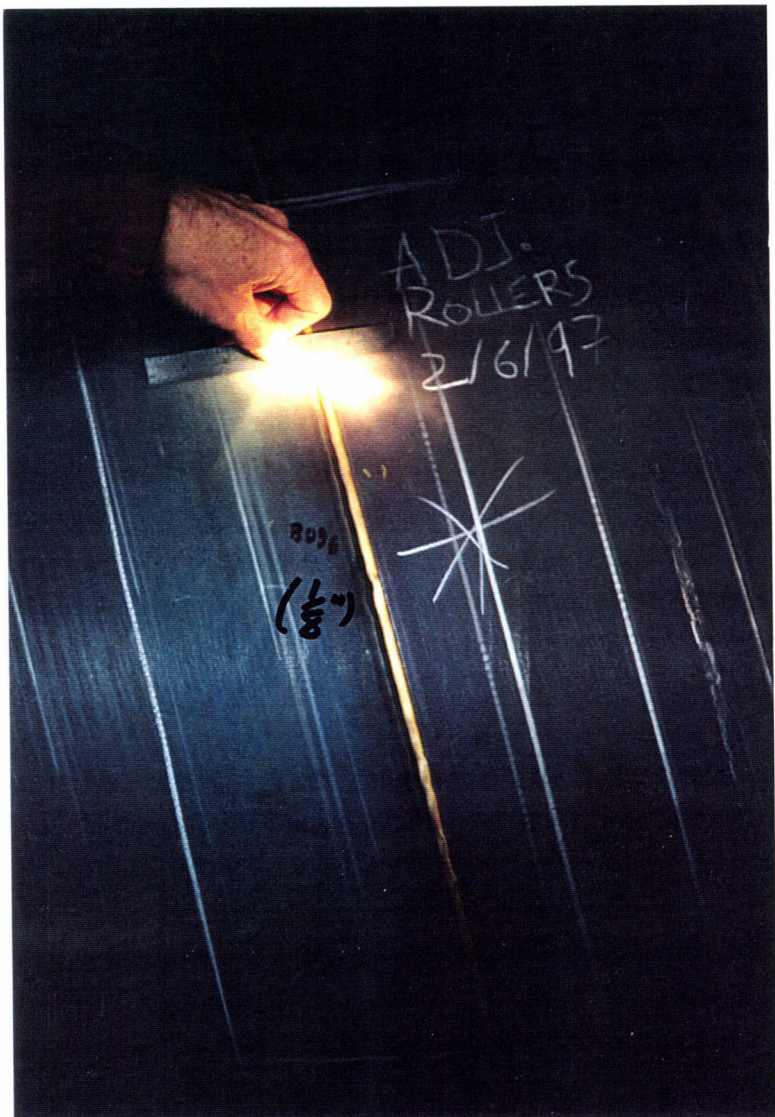
LIGO-G970294-36-B

Beam Tube Spiral Weld Mismatch:
B086, Outside (2/97)



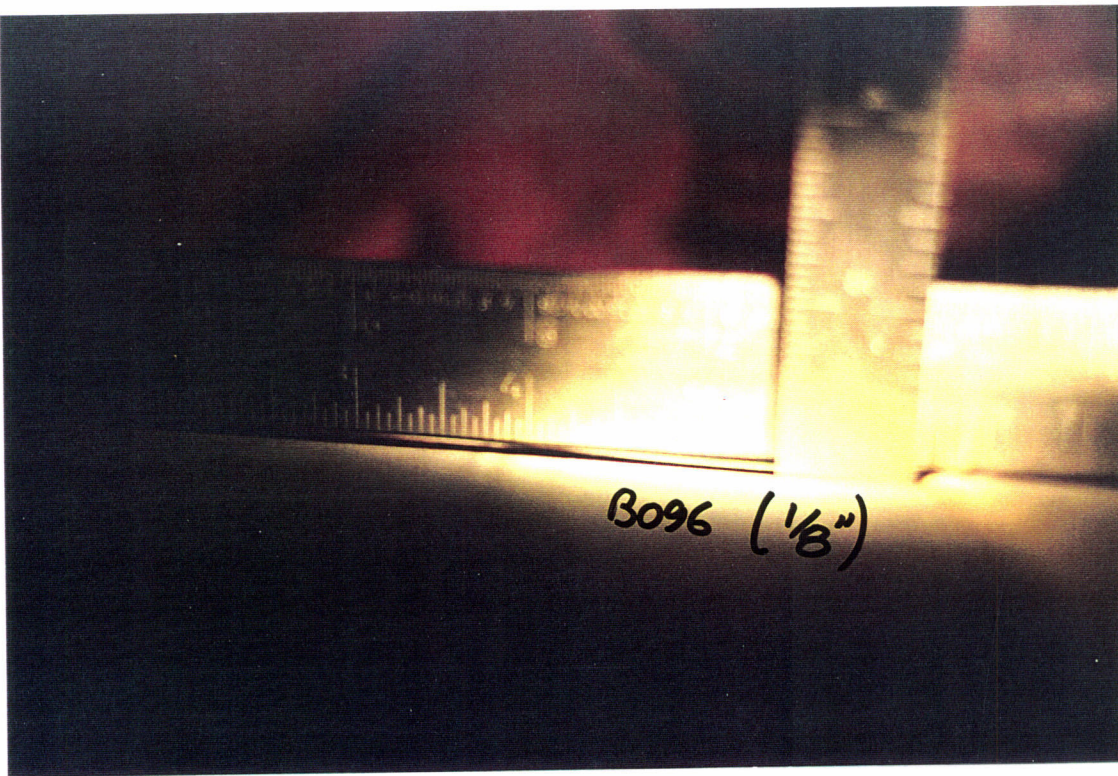
LIGO-G970294-37-B

Beam Tube Spiral Weld Mismatch:
B086, Inside (2/97)



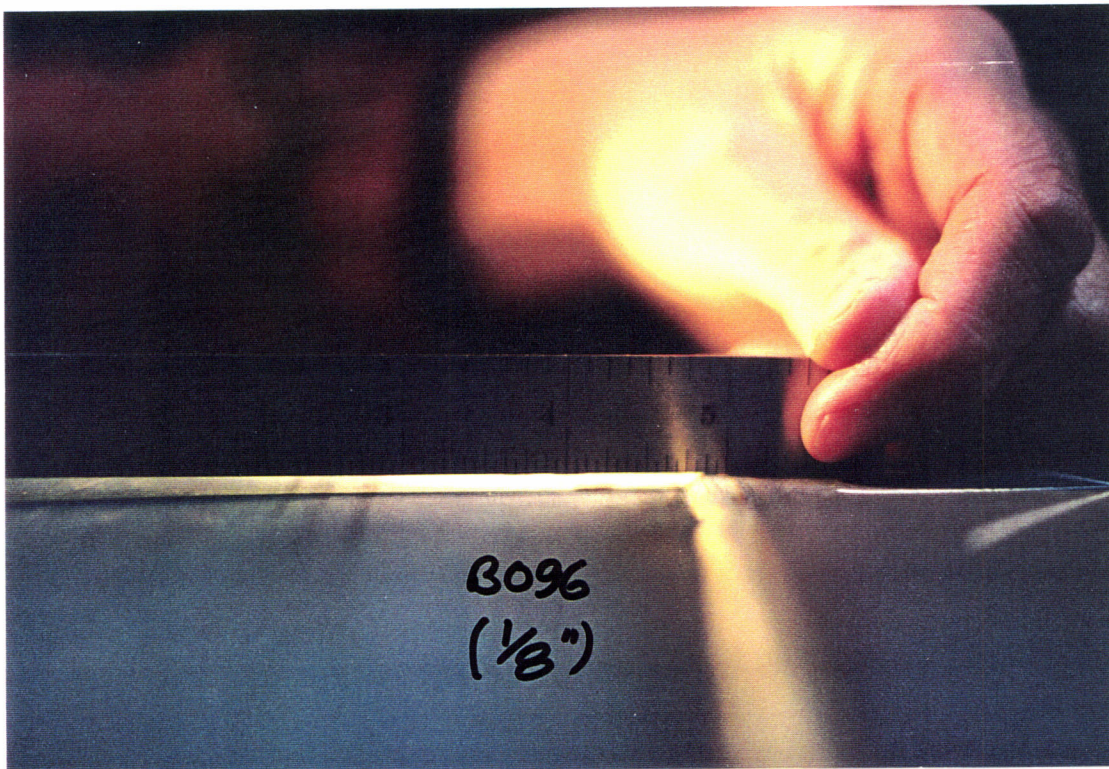
LIGO-G970294-38-B

Beam Tube Spiral Weld Mismatch:
B096, Inside (2/97)



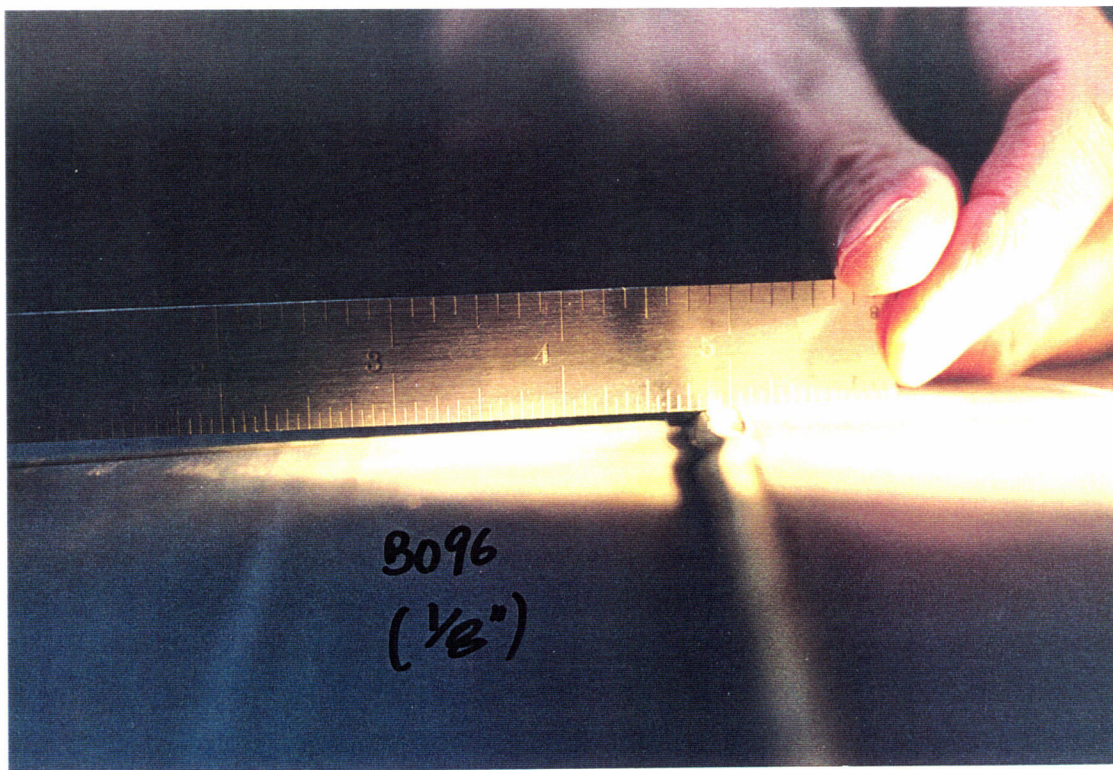
LIGO-G970294-39-B

Beam Tube Spiral Weld Mismatch:
B096, Inside (2/97)



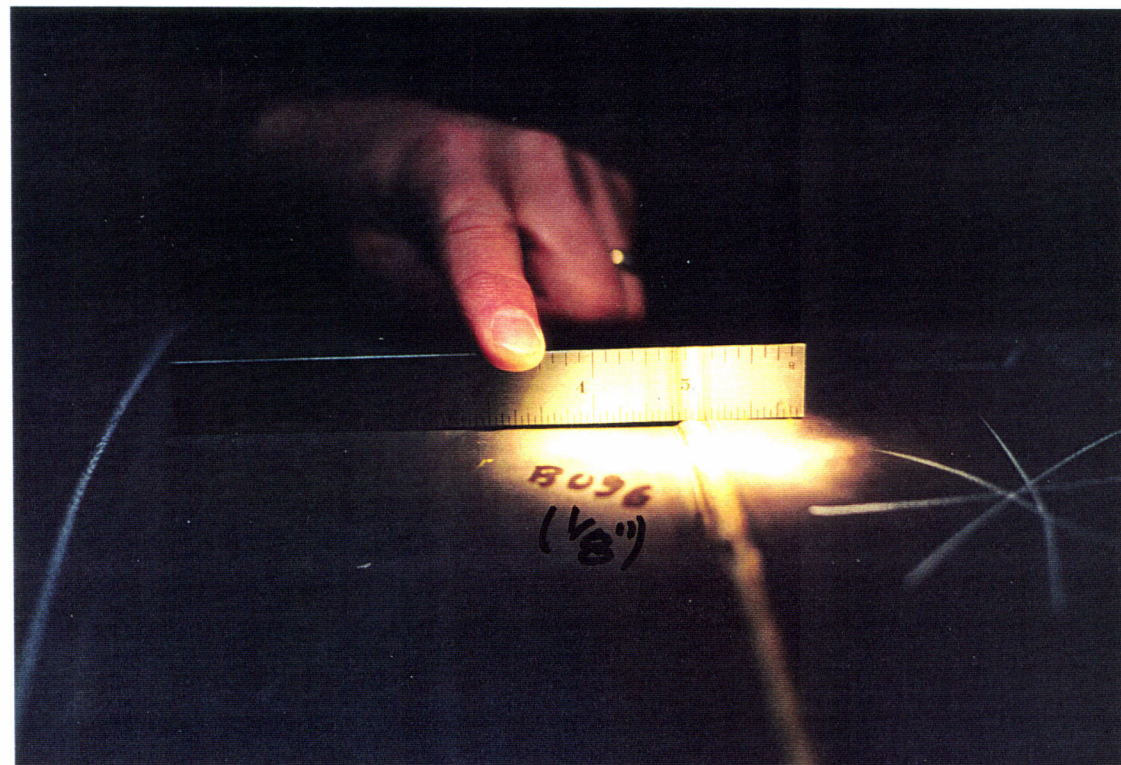
LIGO-G970294-40-B

Beam Tube Spiral Weld Mismatch:
B096, Inside (2/97)



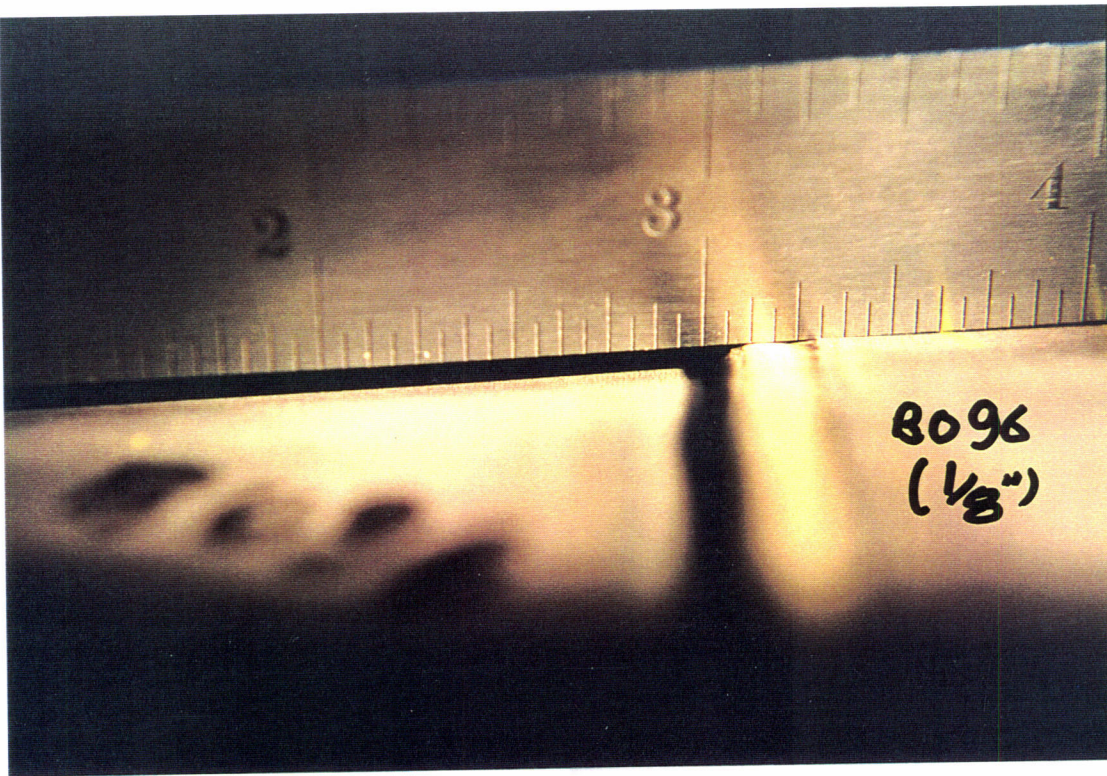
LIGO-G970294-41-B

Beam Tube Spiral Weld Mismatch:
B096, Inside (2/97)



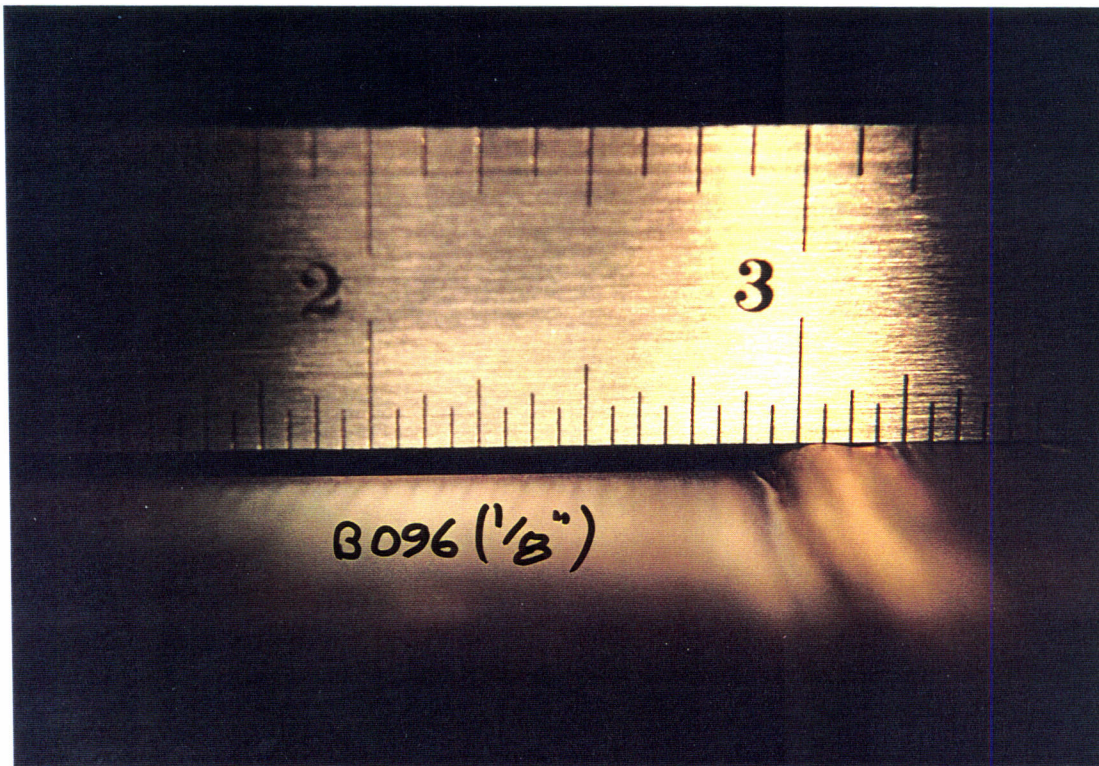
LIGO-G970294-42-B

Beam Tube Spiral Weld Mismatch:
B096, Inside (2/97)



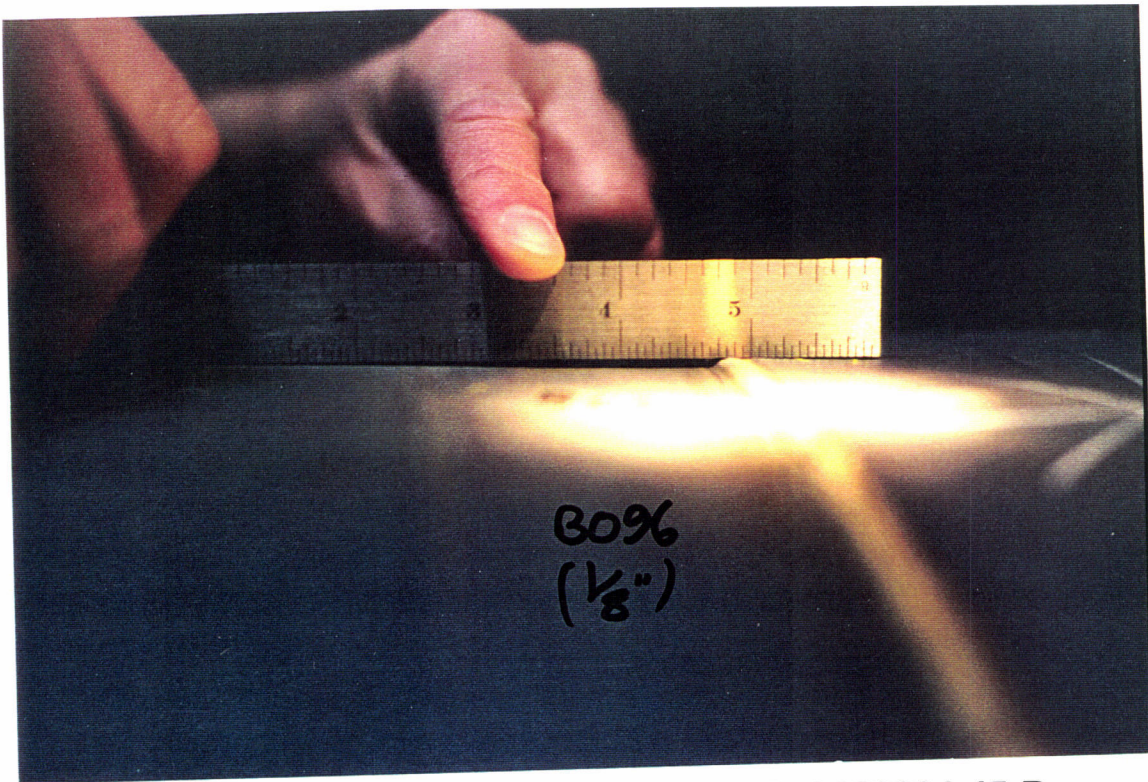
LIGO-G970294-43-B

Beam Tube Spiral Weld Mismatch:
B096, Inside (2/97)



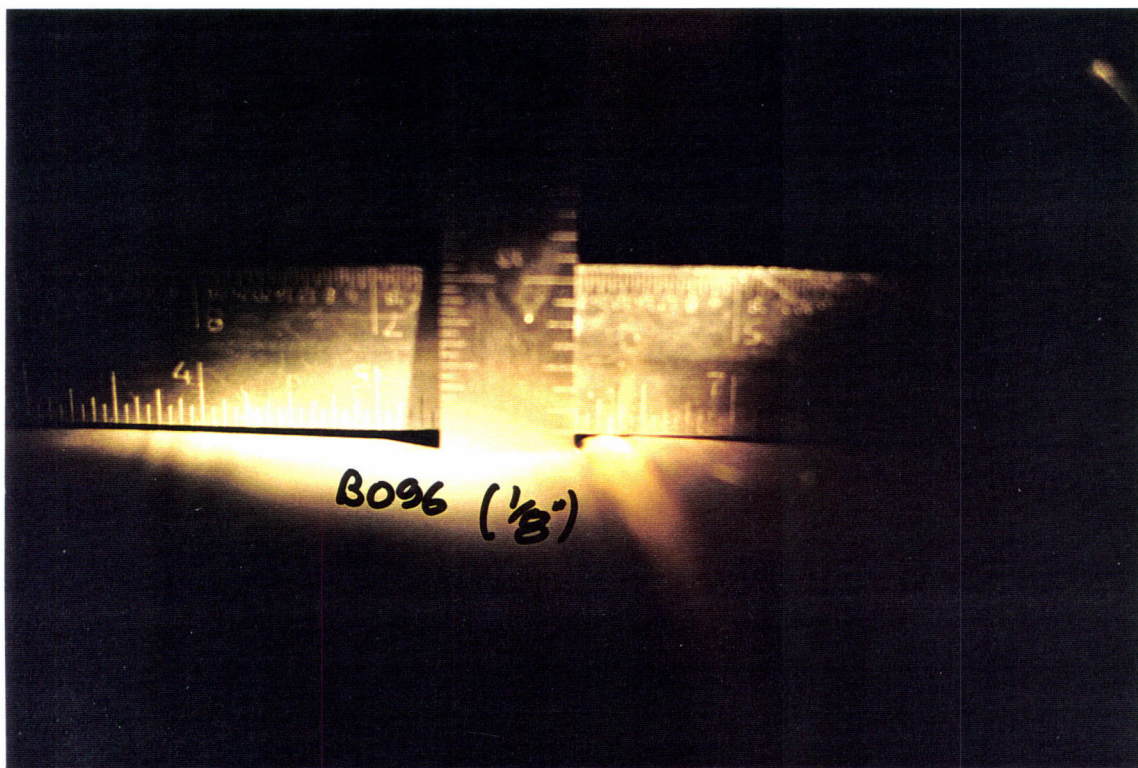
LIGO-G970294-44-B

Beam Tube Spiral Weld Mismatch:
B096, Inside (2/97)



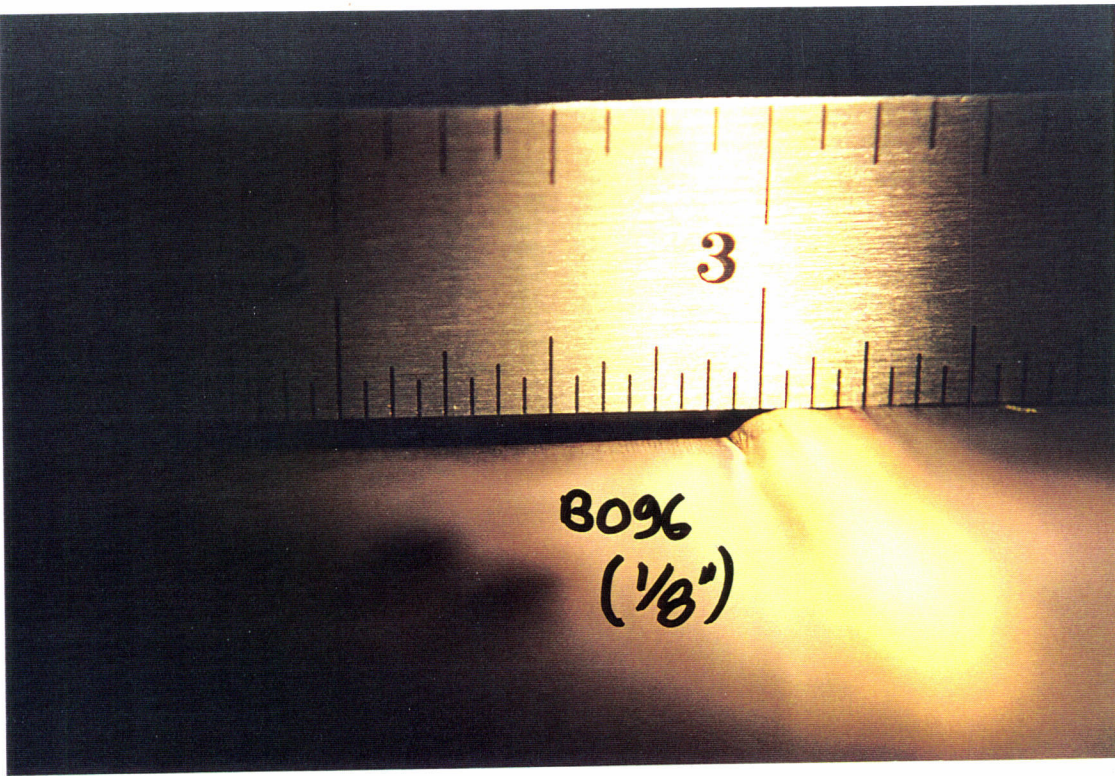
LIGO-G970294-45-B

Beam Tube Spiral Weld Mismatch:
B096, Inside (2/97)



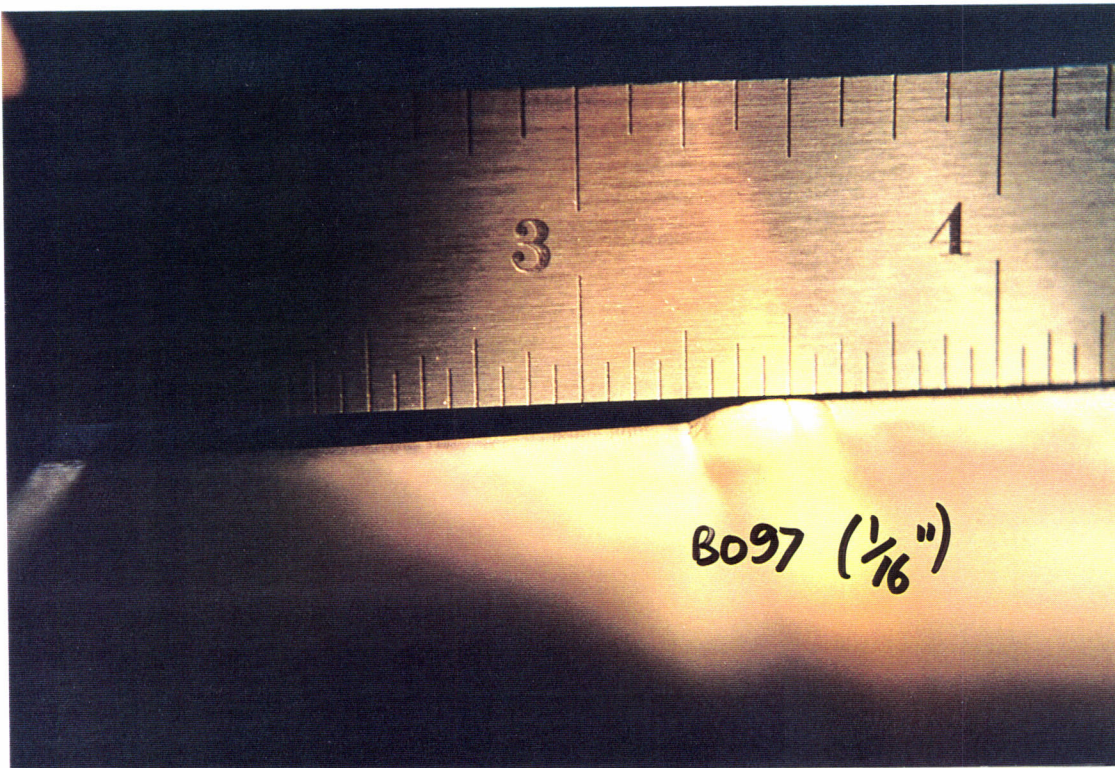
LIGO-G970294-46-B

Beam Tube Spiral Weld Mismatch:
B096, Inside (2/97)



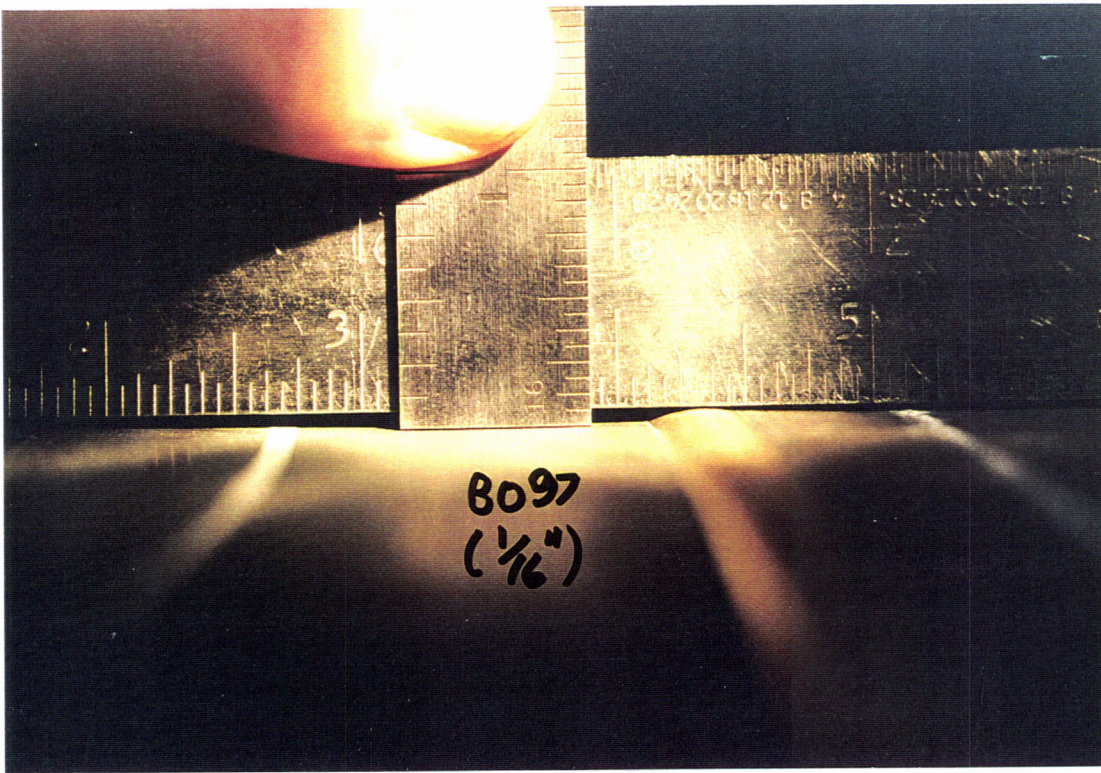
LIGO-G970294-47-B

Beam Tube Spiral Weld Mismatch:
B096, Inside (2/97)



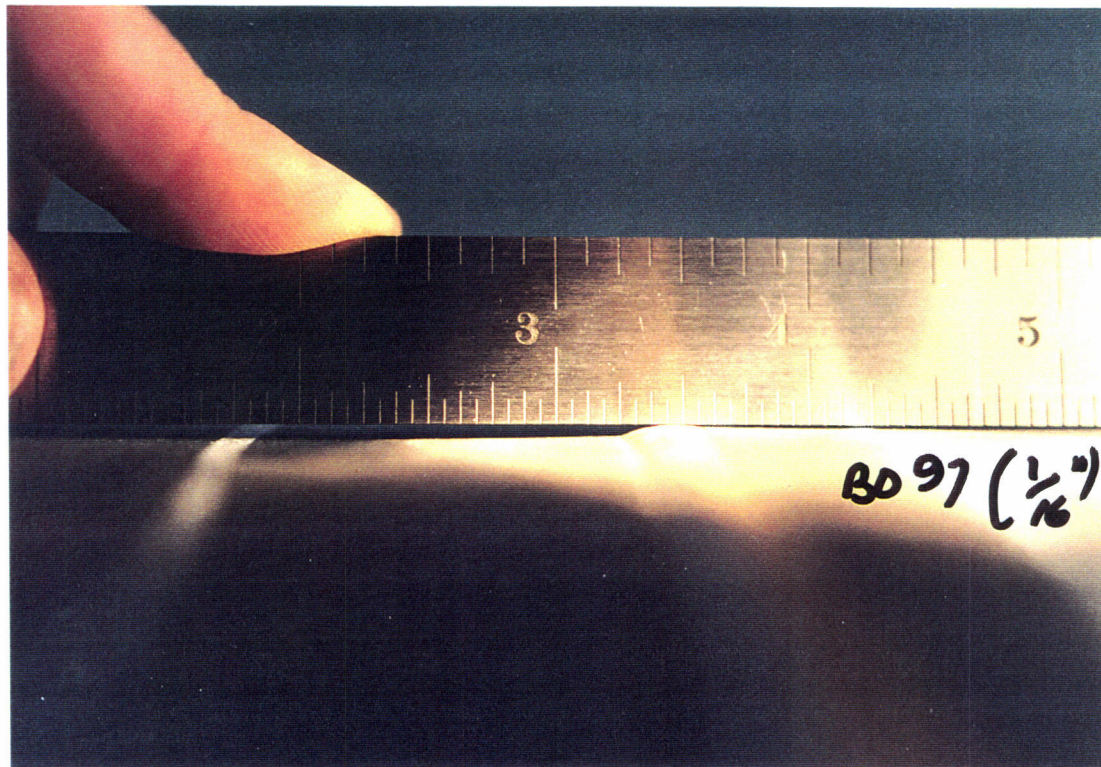
LIGO-G970294-48-B

Beam Tube Spiral Weld Mismatch:
B097, Outside (2/97)



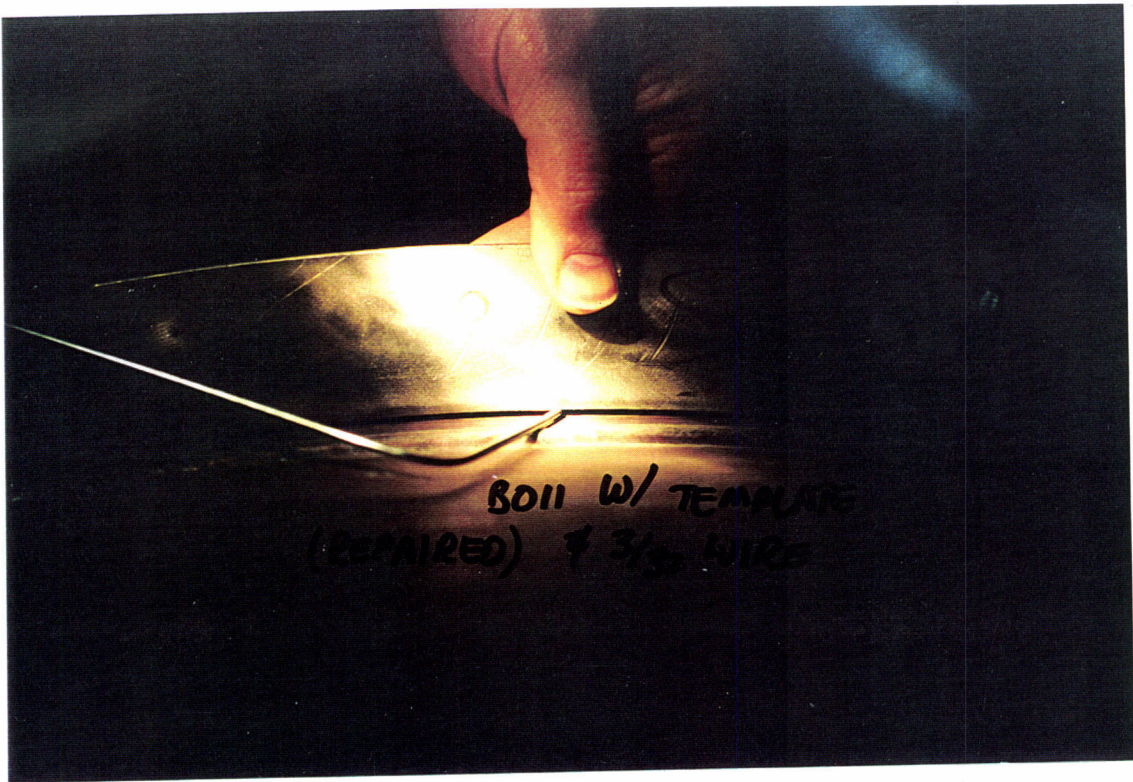
LIGO-G970294-49-B

Beam Tube Spiral Weld Mismatch:
B097, Outside (2/97)



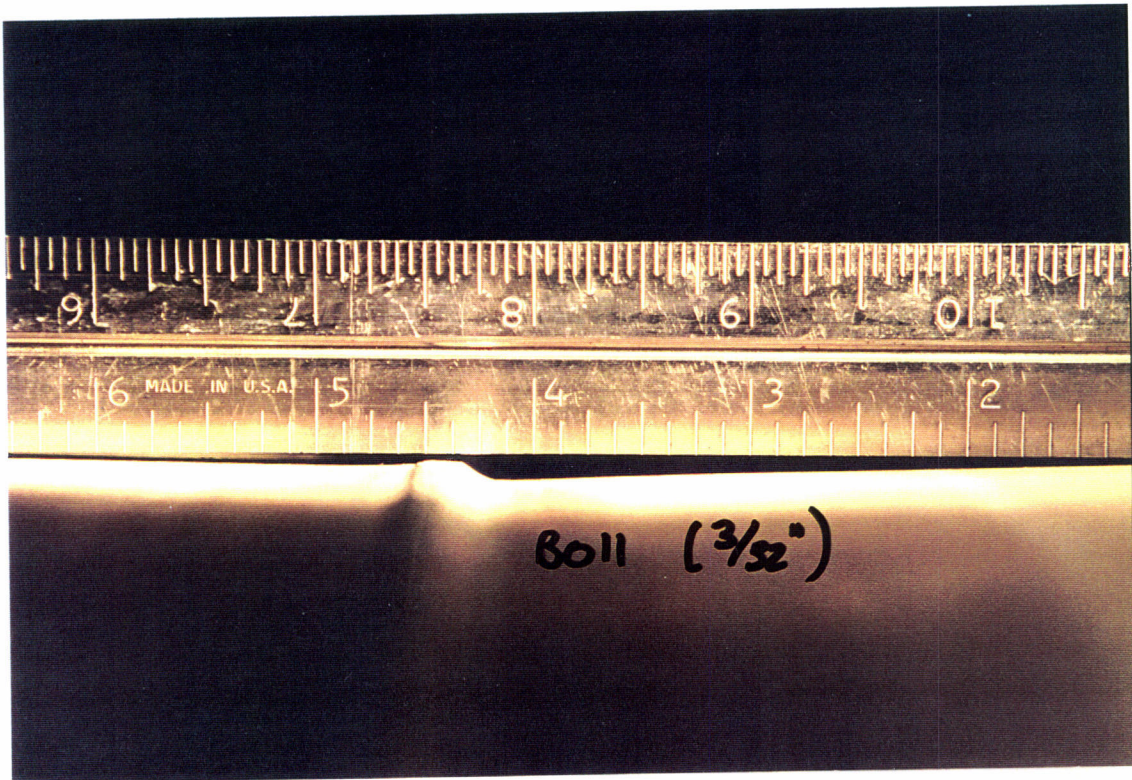
LIGO-G970294-50-B

Beam Tube Spiral Weld Mismatch:
B097, Outside (2/97)



LIGO-G970294-51-B

Beam Tube Spiral Weld Mismatch:
B011, Outside (2/97)



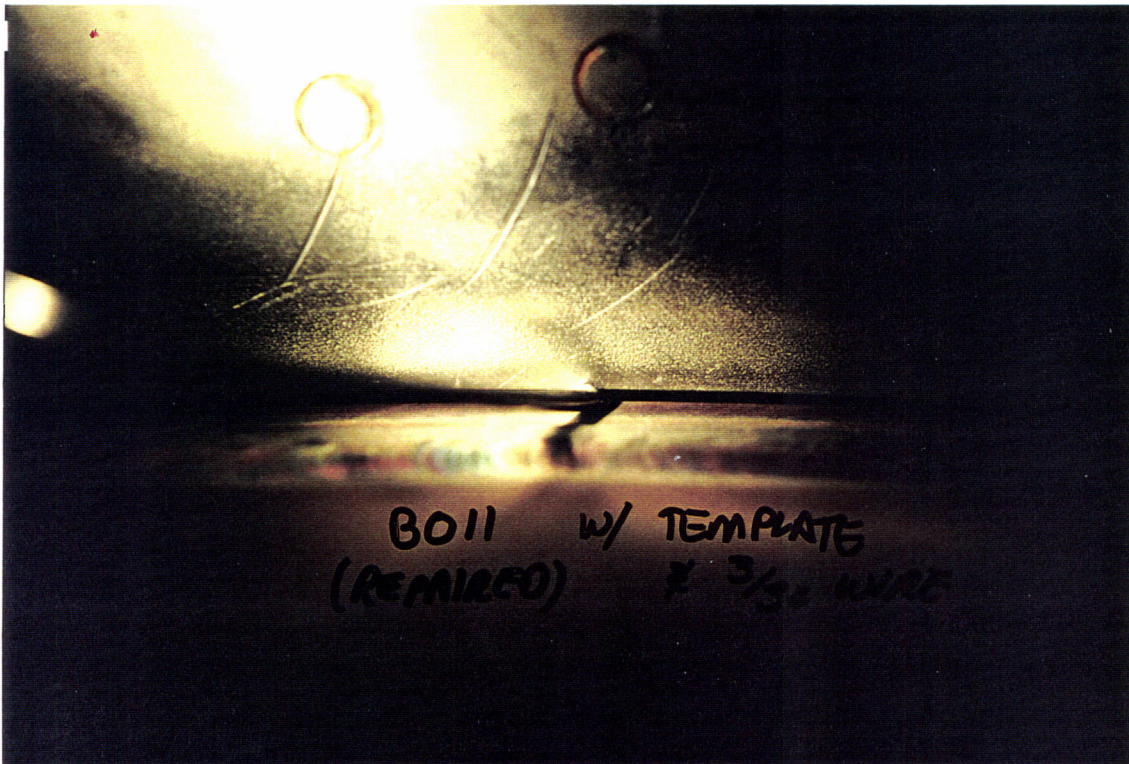
LIGO-G970294-52-B

Beam Tube Spiral Weld Mismatch:
B011, Outside (2/97)



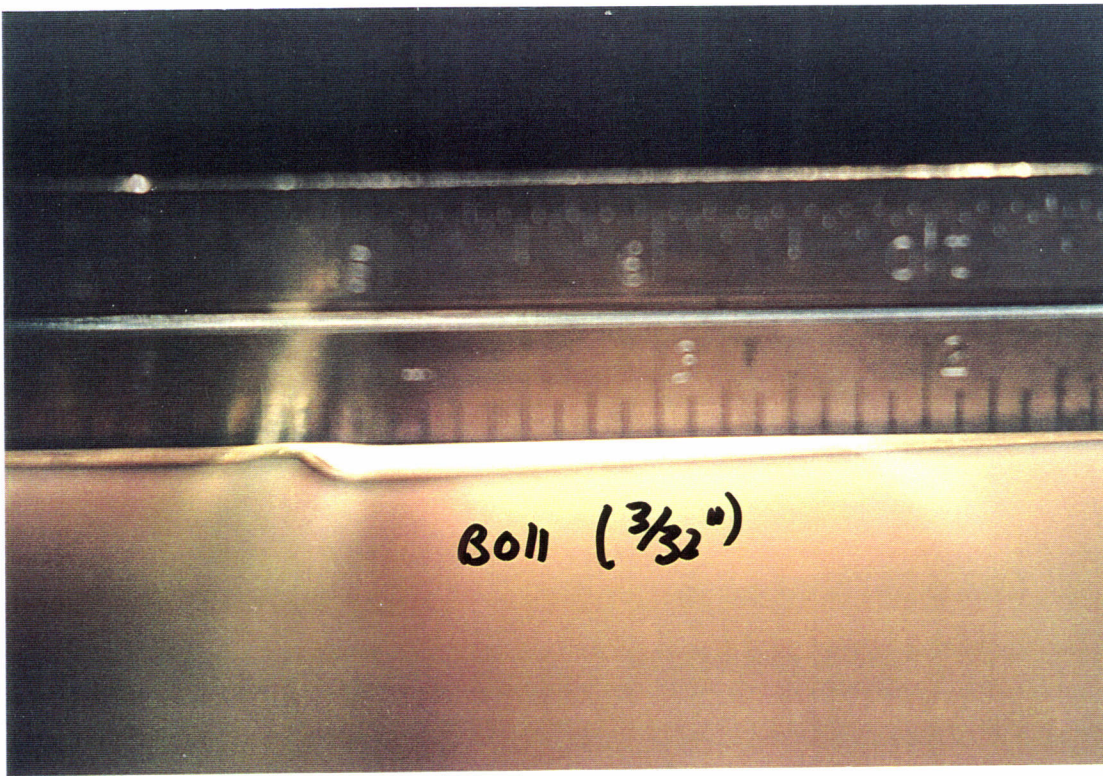
LIGO-G970294-53-B

Beam Tube Spiral Weld Mismatch:
B011, Outside (2/97)



LIGO-G970294-54-B

Beam Tube Spiral Weld Mismatch:
B011, Outside (2/97)



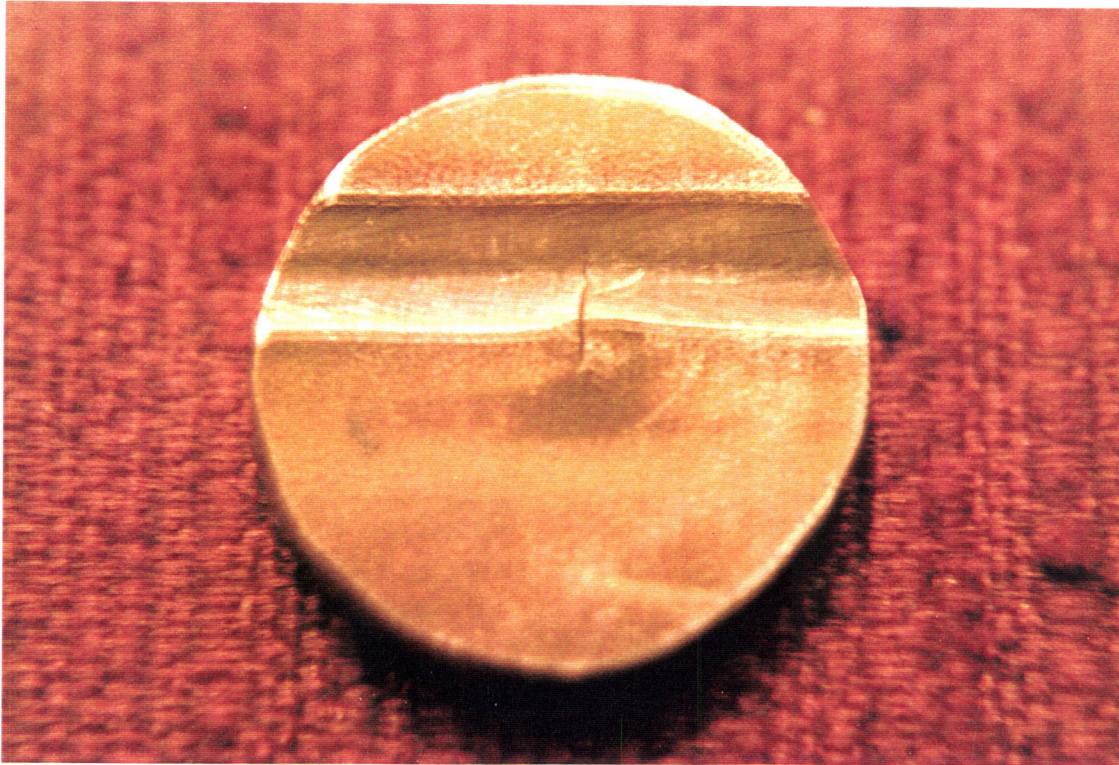
LIGO-G970294-55-B

Beam Tube Spiral Weld Mismatch:
B011, Outside (2/97)



LIGO-G970294-56-B

Cracked Spiral Weld From Beam
Tube Section A-122 (Hanford) (3/97)



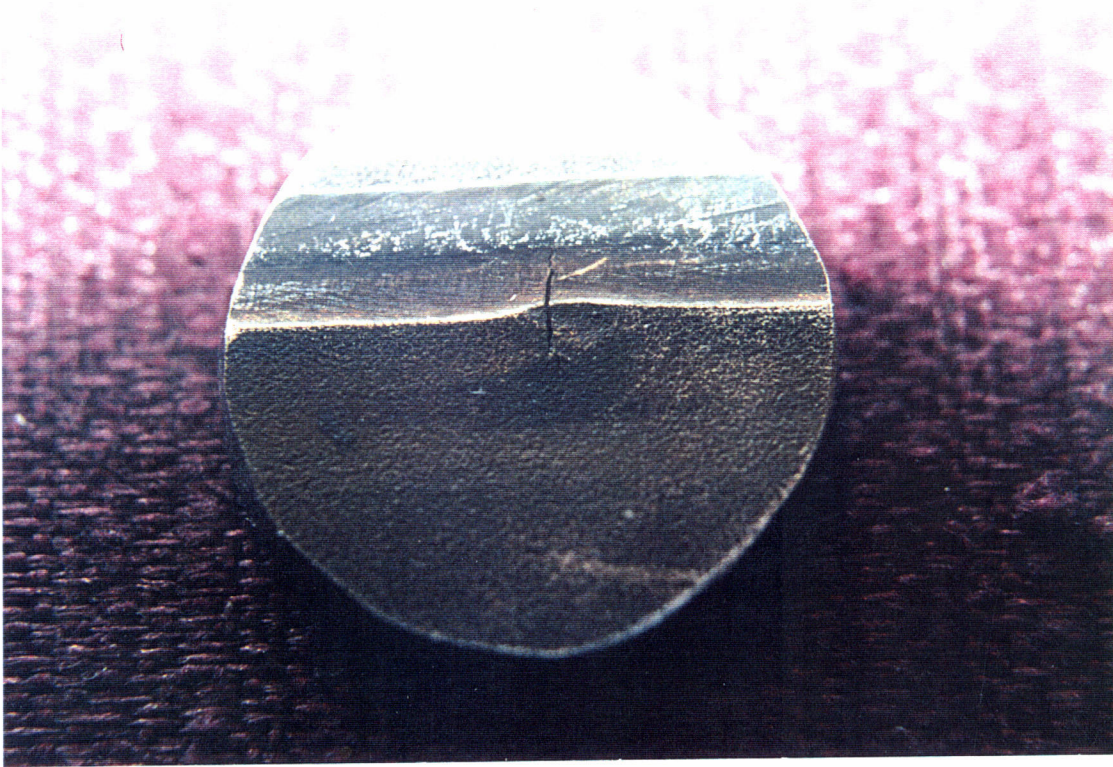
LIGO-G970294-57-B

Cracked Spiral Weld From Beam
Tube Section A-122 (Hanford) (3/97)



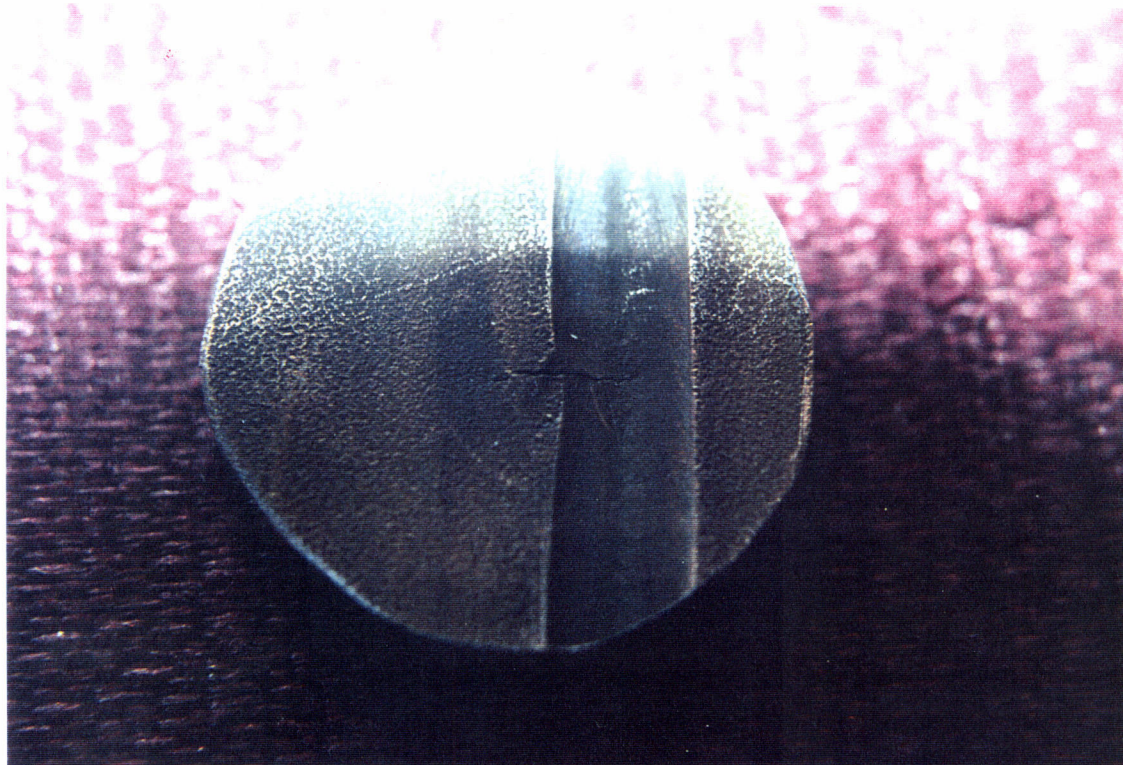
LIGO-G970294-58-B

Cracked Spiral Weld From Beam
Tube Section A-122 (Hanford) (3/97)



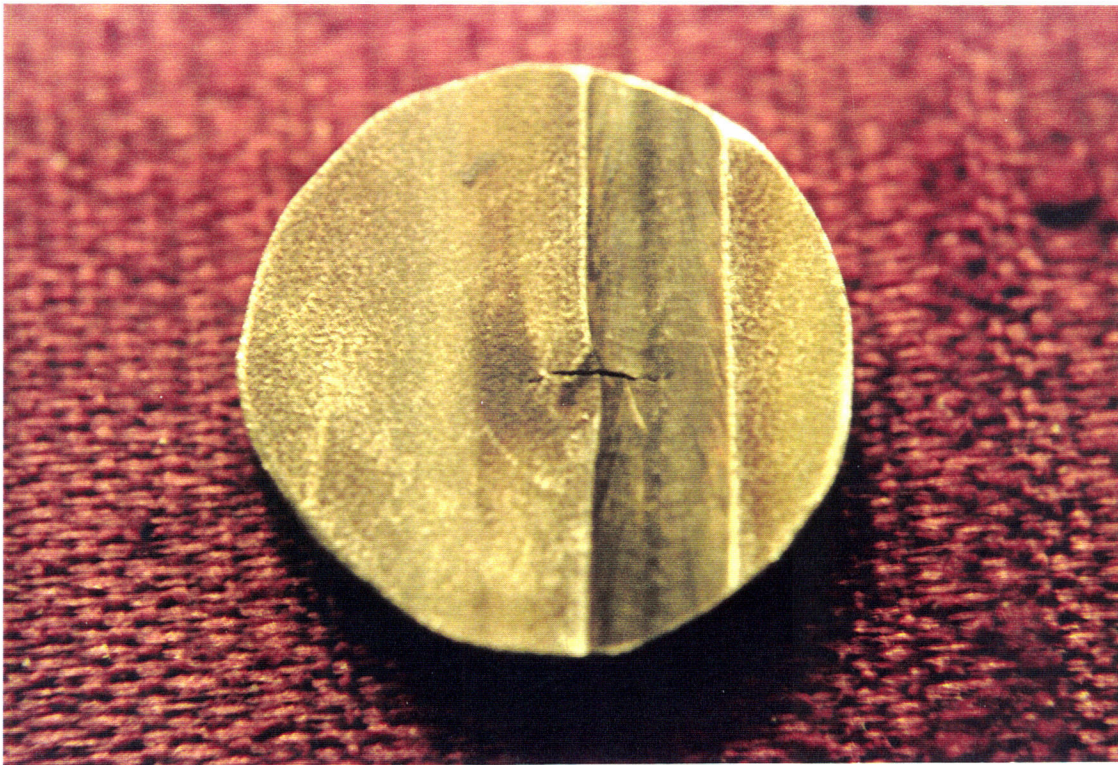
LIGO-G970294-59-B

Cracked Spiral Weld From Beam
Tube Section A-122 (Hanford) (3/97)



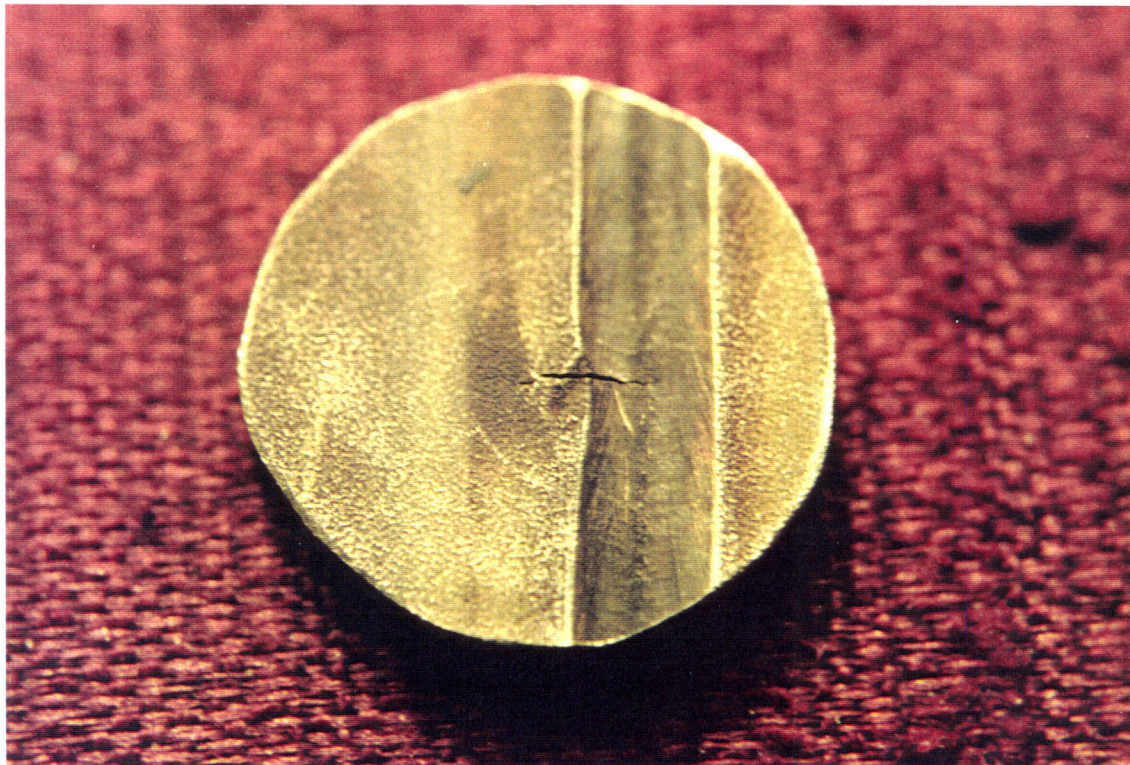
LIGO-G970294-60-B

Cracked Spiral Weld From Beam
Tube Section A-122 (Hanford) (3/97)



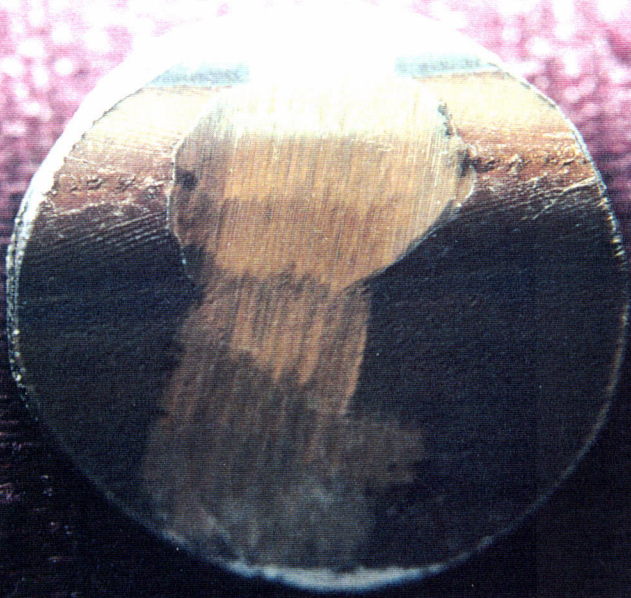
LIGO-G970294-61-B

Cracked Spiral Weld From Beam
Tube Section A-122 (Hanford) (3/97)



LIGO-G970294-62-B

Cracked Spiral Weld From Beam
Tube Section A-122 (Hanford) (3/97)



LIGO-G970294-63-B

Cracked Spiral Weld From Beam
Tube Section A-122 (Hanford) (3/97)



LIGO-G970294-64-B

Cracked Spiral Weld From Beam
Tube Section A-122 (Hanford) (3/97))



LIGO-G970294-65-B

Hanford Beam Tube Section
Transportation Test (10/96)



LIGO-G970294-66-B

Hanford Beam Tube Section
Transportation Test (10/96)



LIGO-G970294-67-B

Hanford Beam Tube Section
Transportation Test (10/96)



LIGO-G970294-68-B

Hanford Beam Tube Section
Transportation Test (10/96)



LIGO-G970294-69-B

Hanford Beam Tube Section
Transportation Test (10/96)



LIGO-G970294-70-B

Hanford Beam Tube Section
Transportation Test (10/96)



LIGO-G970294-71-B

Beam Tube Sections in Transit from
Big Pasco (11/96)



LIGO-G970294-72-B

Beam Tube Sections in Transit from
Big Pasco (11/96)



LIGO-G970294-73-B

Beam Tube Sections in Transit from
Big Pasco (11/96)



LIGO-G970294-74-B

Beam Tube Sections in Transit from
Big Pasco (11/96)



LIGO-G970294-75-B

Beam Tube Sections in Transit from
Big Pasco (11/96)



LIGO-G970294-76-B

Beam Tube Sections in Transit from
Big Pasco (11/96)



LIGO-G970294-77-B

Beam Tube Sections in Transit from
Big Pasco (11/96)



LIGO-G970294-78-B

Beam Tube Sections in Transit from
Big Pasco (11/96)



LIGO-G970294-79-B

Beam Tube Sections in Transit from
Big Pasco (11/96)



LIGO-G970294-80-B

Setting the First Beam Tube
Termination Gate Valve at Hanford
(10/96)



LIGO-G970294-81-B

Setting the First Beam Tube
Termination Gate Valve at Hanford
(10/96)



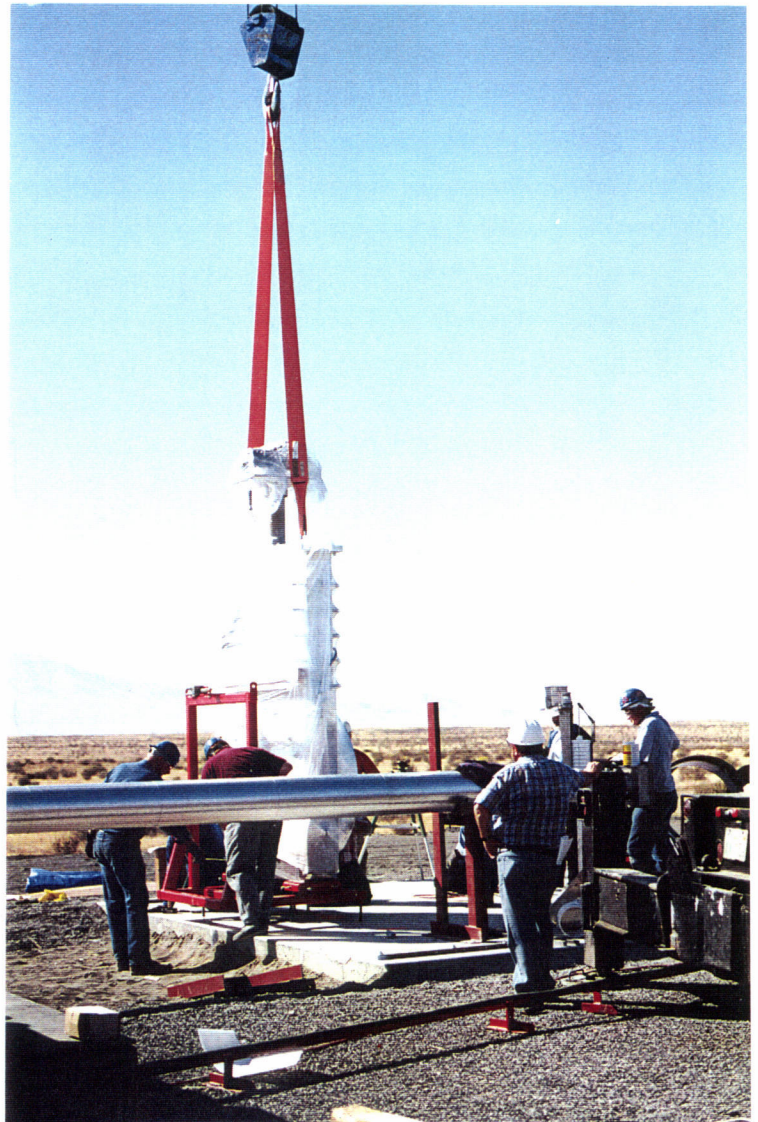
LIGO-G970294-82-B

Setting the First Beam Tube
Termination Gate Valve at Hanford
(10/96)



LIGO-G970294-83-B

Setting the First Beam Tube
Termination Gate Valve at Hanford
(10/96)



LIGO-G970294-84-B

Setting the First Beam Tube
Termination Gate Valve at Hanford
(10/96)



LIGO-G970294-85-B

Setting the First Beam Tube
Termination Gate Valve at Hanford
(10/96)



LIGO-G970294-86-B

Setting the First Beam Tube
Termination Gate Valve at Hanford
(10/96)



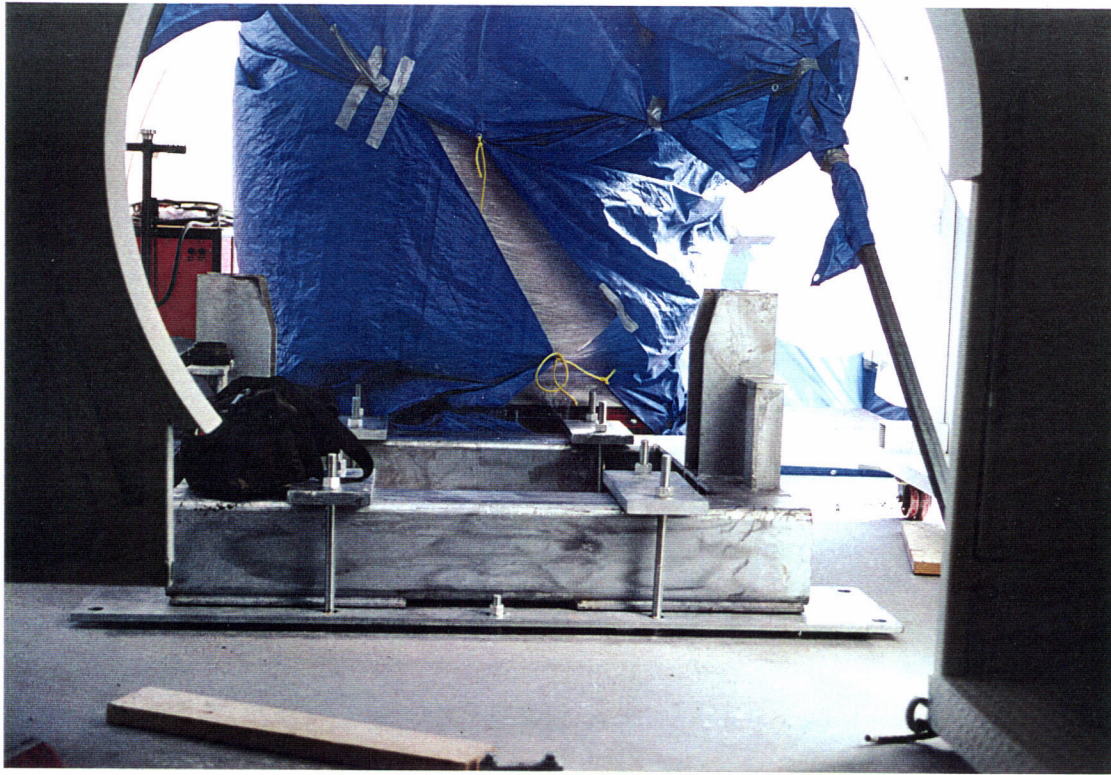
LIGO-G970294-87-B

Setting the First Beam Tube
Termination Gate Valve at Hanford
(10/96)



LIGO-G970294-88-B

Setting the First Beam Tube
Termination Gate Valve at Hanford
(10/96)



LIGO-G970294-89-B

Setting the First Beam Tube
Termination Gate Valve at Hanford
(10/96)



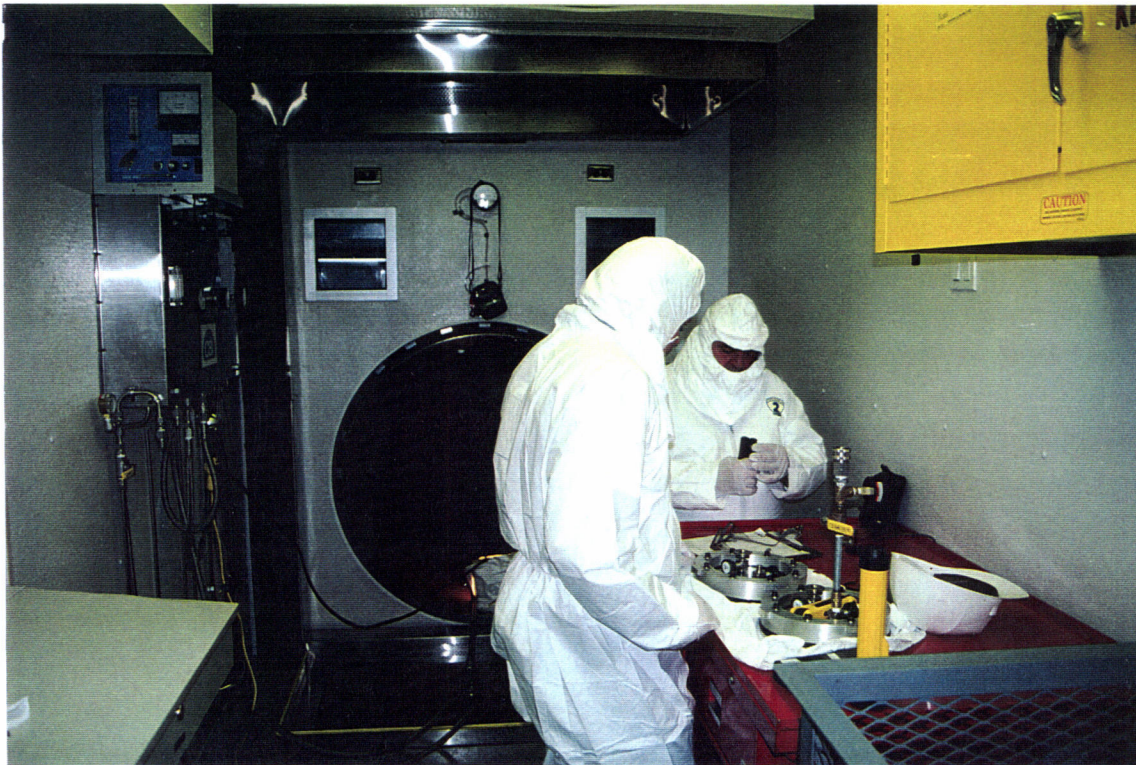
LIGO-G970294-90-B

Setting the First Beam Tube
Termination Gate Valve at Hanford
(10/96)



LIGO-G970294-91-B

Inside the CBI Clean Room at
Hanford (note Glass Coated Baffles)
(10/96)



LIGO-G970294-92-B

Inside the CBI Clean Room at
Hanford (12/96)



LIGO-G970294-93-B

Inside the CBI Clean Room at
Hanford (12/96)



LIGO-G970294-94-B

Inside the CBI Clean Room at
Hanford (12/96)

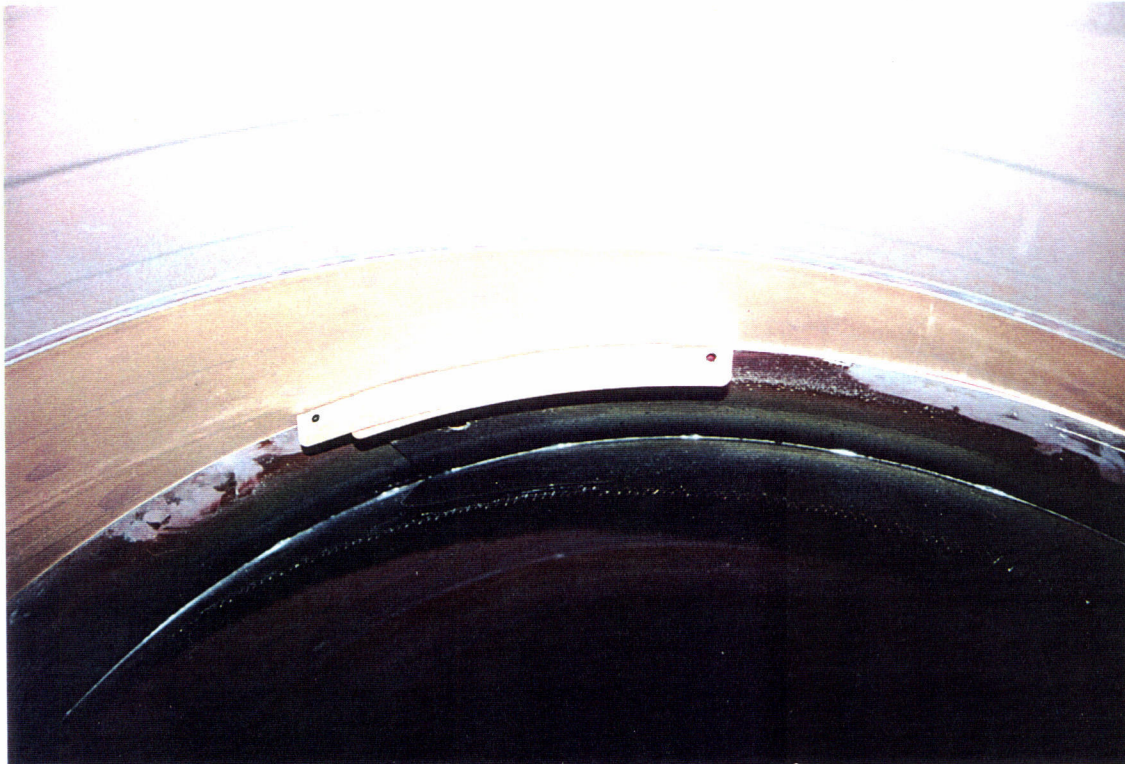


LIGO-G970294-95-B

Inside the CBI Clean Room at Hanford (12/96)

LIGO-G970294-96-B

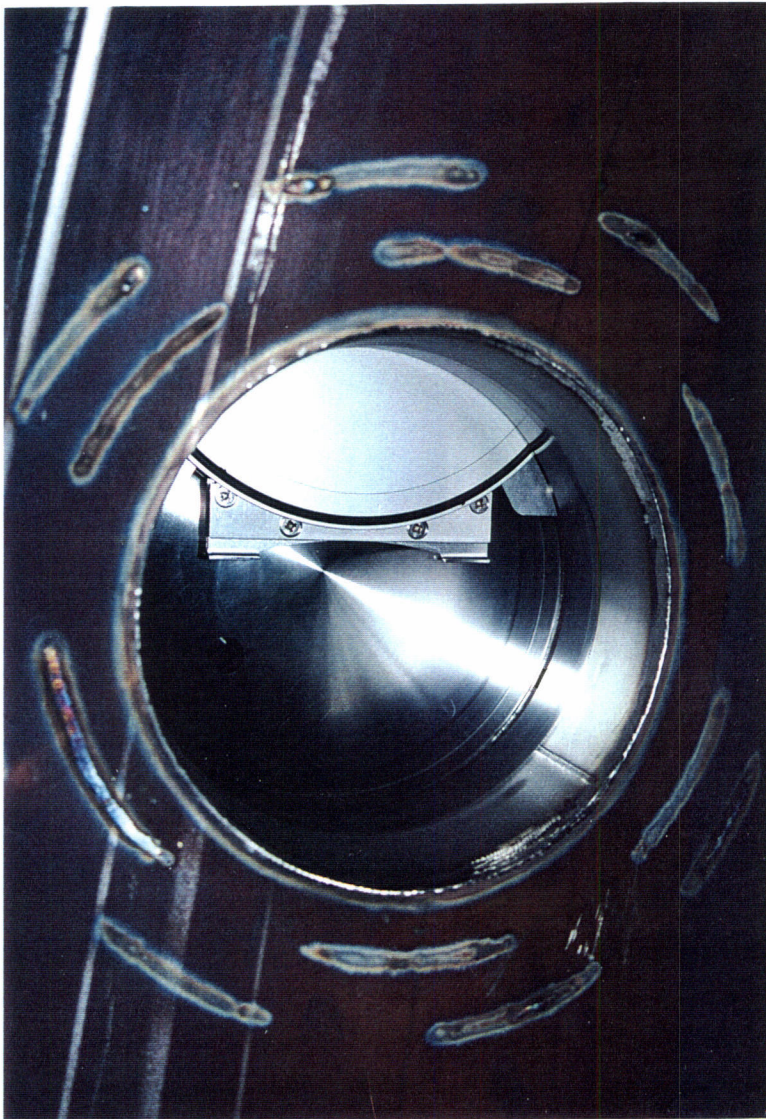
Tabs on Glass Baffle, Installed in Beam Tube (10/96)





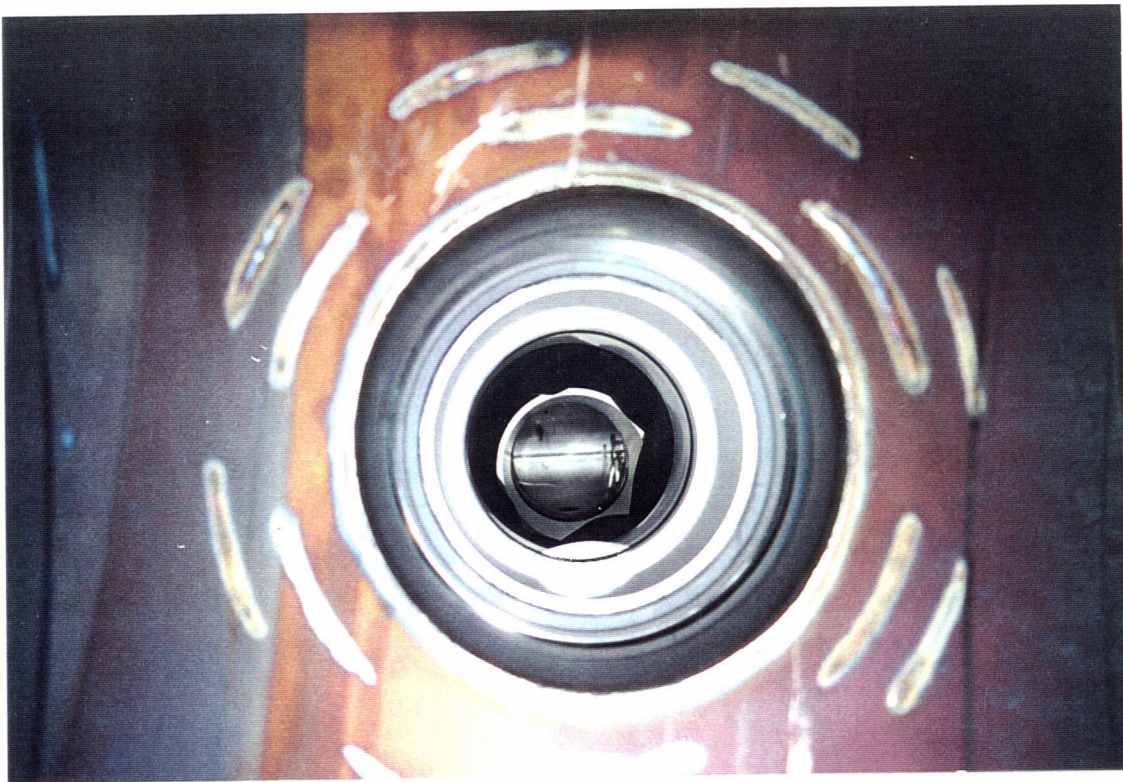
LIGO-G970294-97-B

Vertical Boring Mill at Magnolia Beach
(9/97)



LIGO-G970294-98-B

Pump Port Valve, Partially Open,
Seen From Inside Beam Tube (1997)



LIGO-G970294-99-B

Beam Tube BDF Flexible Connection,
Viewed Through Pump Port from
Inside Tube (10/96)