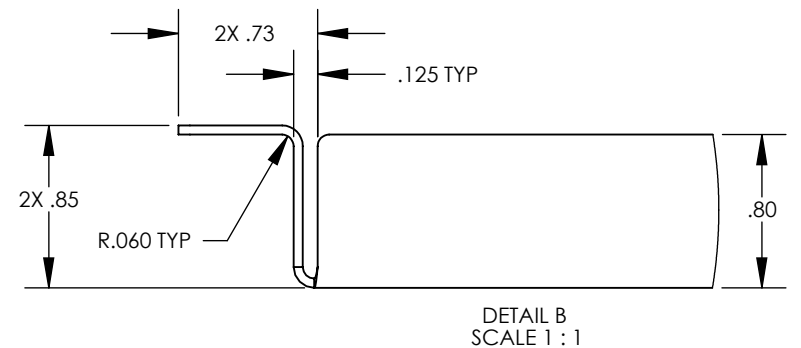
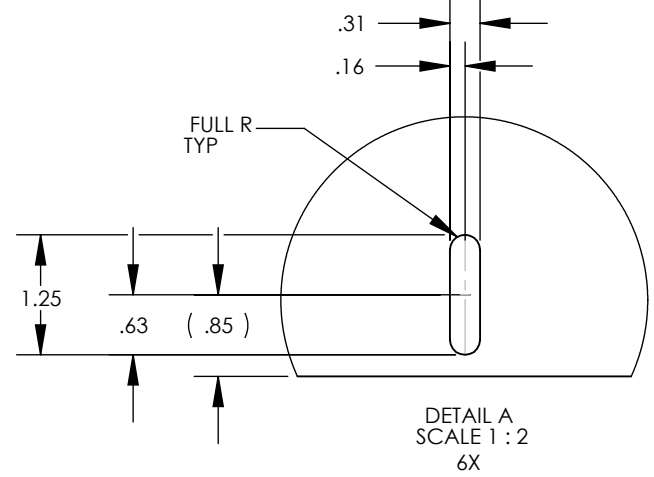
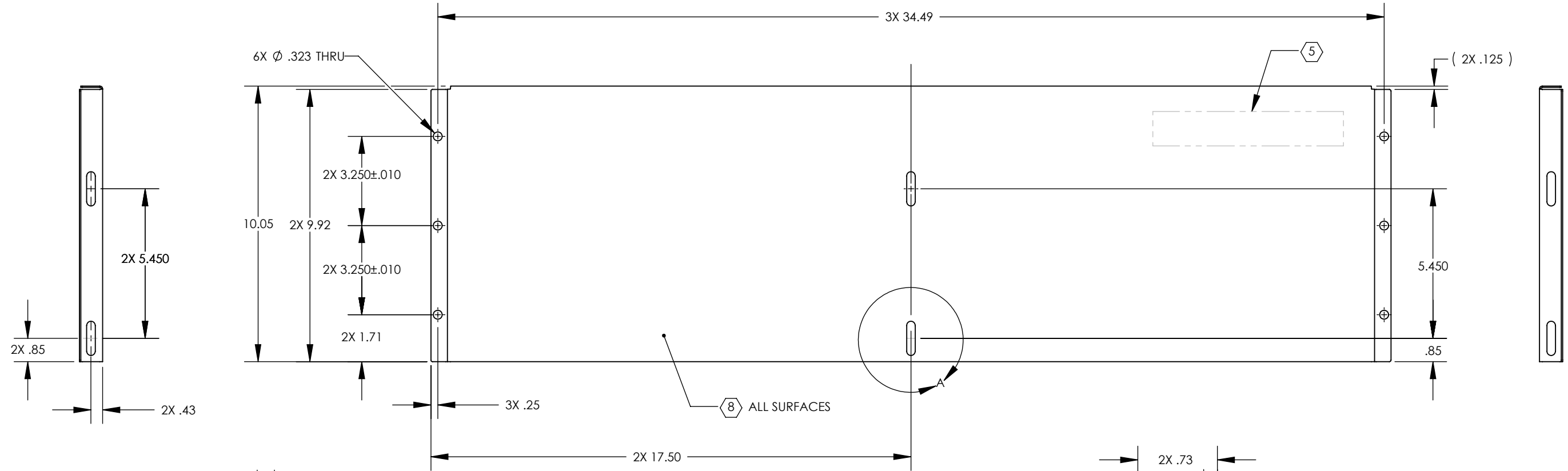
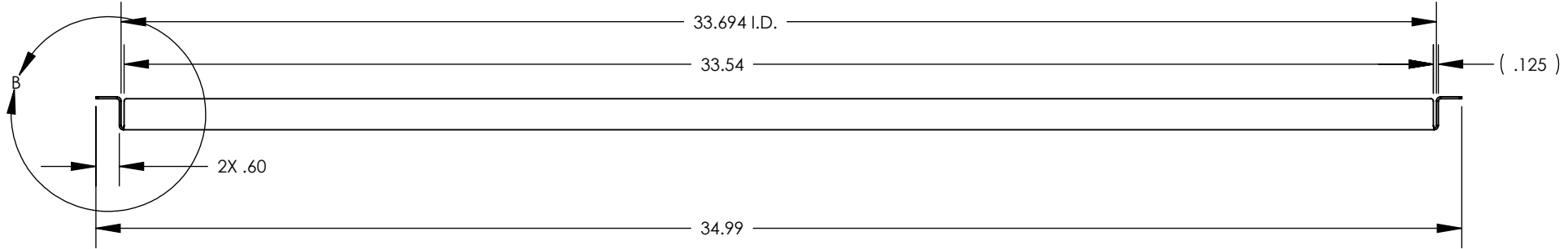


D1100288\_AdlIGO\_AOS\_SLC\_ACB Top Extender, PART PDM REV: X-006, DRAWING PDM REV: X-010

- NOTES CONTINUED:**
- ⑤ MECHANICALLY STAMP (NO INKS OR DYES) PART NUMBER, REVISION AND SERIAL NUMBER .20 DEEP WITH MINIMUM CHARACTER HEIGHT .156 APPROXIMATELY WHERE SHOWN. SERIAL NUMBER WILL START AT 001 AND PROCEED CONSECUTIVELY. EXAMPLE: D100XXX-V1 S/N 001
  - 6. ALL PARTS SHALL BE MANUFACTURED IN ACCORDANCE WITH LIGO SPECIFICATION E0900364.
  - 7. ALL MATERIAL IS TO BE VIRGIN MATERIAL (i.e. NO WELD REPAIRS, PLUGS OR RECYCLED MATERIAL). NO REPAIRS SHALL BE MADE UNLESS APPROVED IN ADVANCE, AND IN WRITING, BY LIGO LABORATORY. REFER TO LIGO-E0900364.
  - ⑥ SURFACE FINISH TO BE AS-PROCESSED FROM MILL/SUPPLIER, FREE FROM SCRATCHES OR GOUGES.
  - ⑦ PART WILL BE COMPLETELY PORCELAIN COATED PER LIGO SPECIFICATION E1000083 AFTER FABRICATION.
  - 10. DIMENSIONS APPLY BEFORE PORCELAIN COATING UNLESS SPECIFIED.

REV.	DATE	DCN #	DRAWING TREE #
v1	20 MAR 2011	-	-
v2	07 APR 2011	E1100216	-
v3	25 JUN 2011	E1100335	-



**NOTES AND TOLERANCES: (UNLESS OTHERWISE SPECIFIED)**

DIMENSIONS ARE IN INCHES

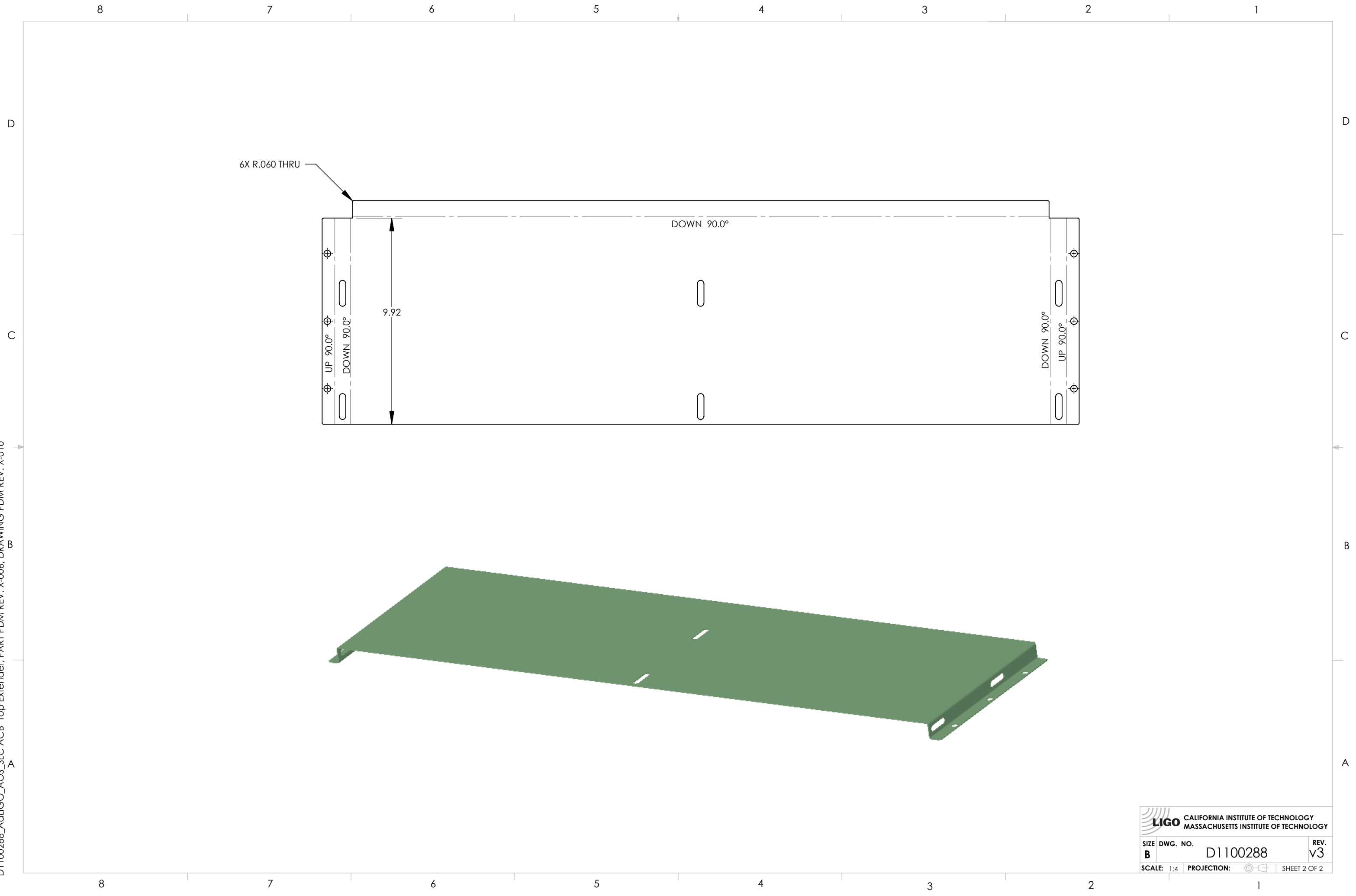
TOLERANCES:  
 .XX ± .03  
 .XXX ± .015  
 ANGULAR ± 1.0°


MATERIAL: 18 GA ENAMEL STEEL A424

FINISH: 8 9

CALIFORNIA INSTITUTE OF TECHNOLOGY MASSACHUSETTS INSTITUTE OF TECHNOLOGY		PART NAME	
SYSTEM: ADVANCED LIGO SUB-SYSTEM: AOS		SLC ACB TOP EXTENDER	
DESIGNER	N.Nguyen	17 Feb 2011	SIZE DWG. NO.
DRAFTER	N. KILPATRICK	07 MAR 2011	B
CHECKER			D1100288
APPROVAL			REV. v3
SCALE: 1:4		PROJECTION:	
		SHEET 1 OF 2	

D1100288\_AcLIGO\_AOS\_SLC\_ACB Top Extender, PART PDM REV: X-006, DRAWING PDM REV: X-010



 <b>CALIFORNIA INSTITUTE OF TECHNOLOGY</b> <b>MASSACHUSETTS INSTITUTE OF TECHNOLOGY</b>		
SIZE	DWG. NO.	REV.
<b>B</b>	D1100288	<b>v3</b>
SCALE: 1:4	PROJECTION:	SHEET 2 OF 2