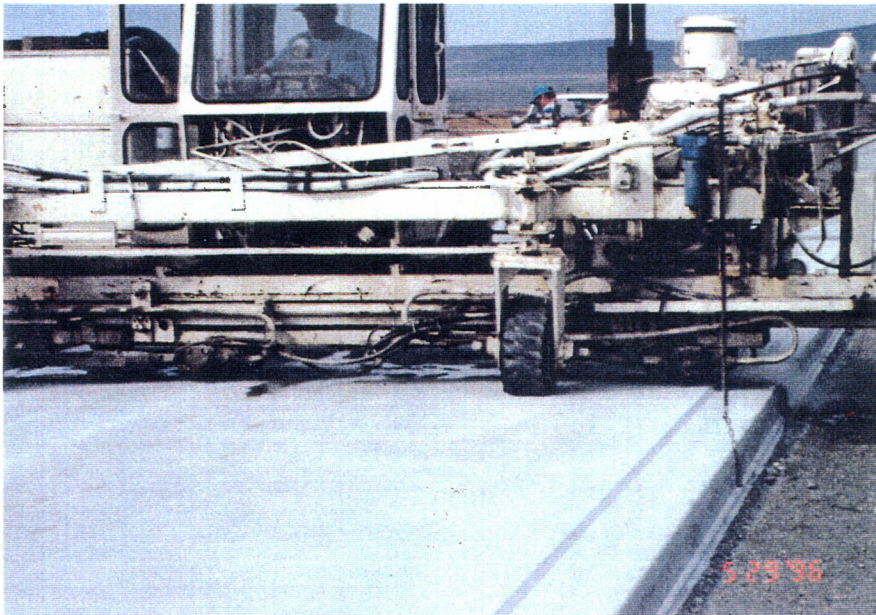


G960135-

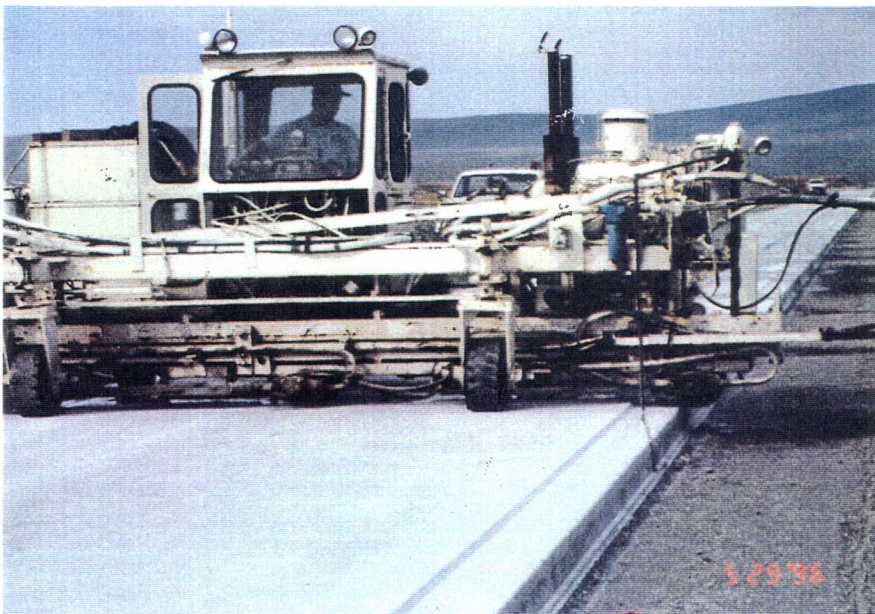
G960135-01-OP

At one location a natural crack developed at the time when the design joint was cut. The designed joint was sealed and the natural crack will be the expansion joint.



G960135-02-OP

Saw-cutting activities are ongoing



G960135-03-OP

Another view of the saw-cutting activity



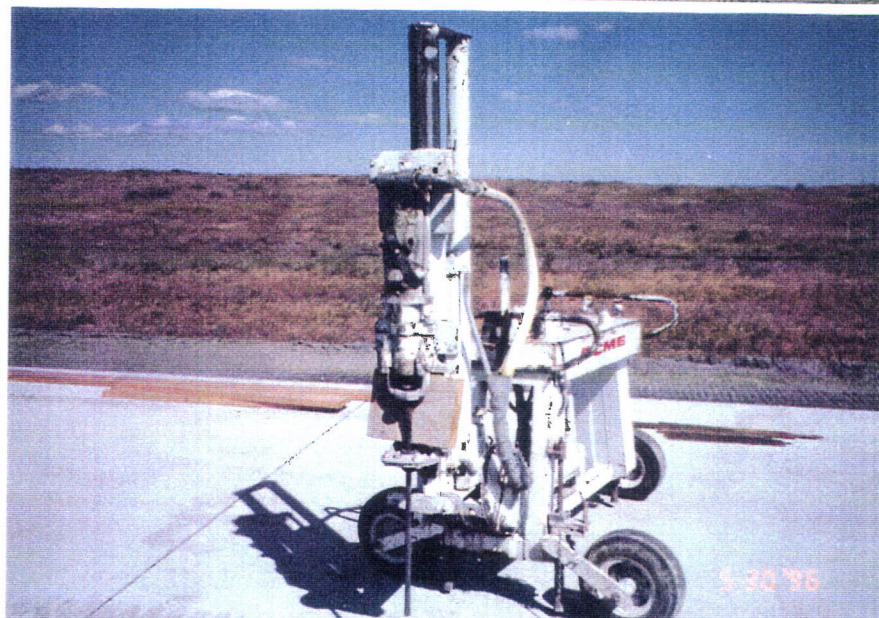
G960135-04-O-P

At the service entrance location the electrical contractor raised the bake-out conduit.



G960135-05-O-P

Typical bed preparation for the service entrance slab



G960135-06-O-P

The equipment that was utilized to provide the dowel hole at the service entrances.



G960135-07-O-P

Typical fire water
pipe joint location



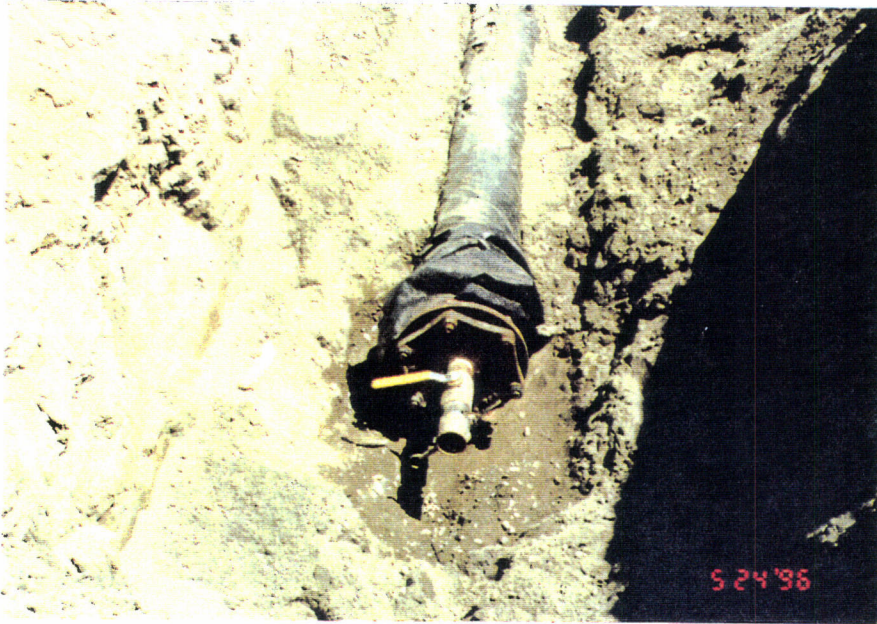
G960135-08-O-P

Typical installed end
cup of the fire water
pipe.



G960135-09-O-P

Typical pipe end
cup.



G960135-10-O-P

Fire water line hydro
test connection.



G960135-11-O-P

Fire water line
during the hydrotest
activities.

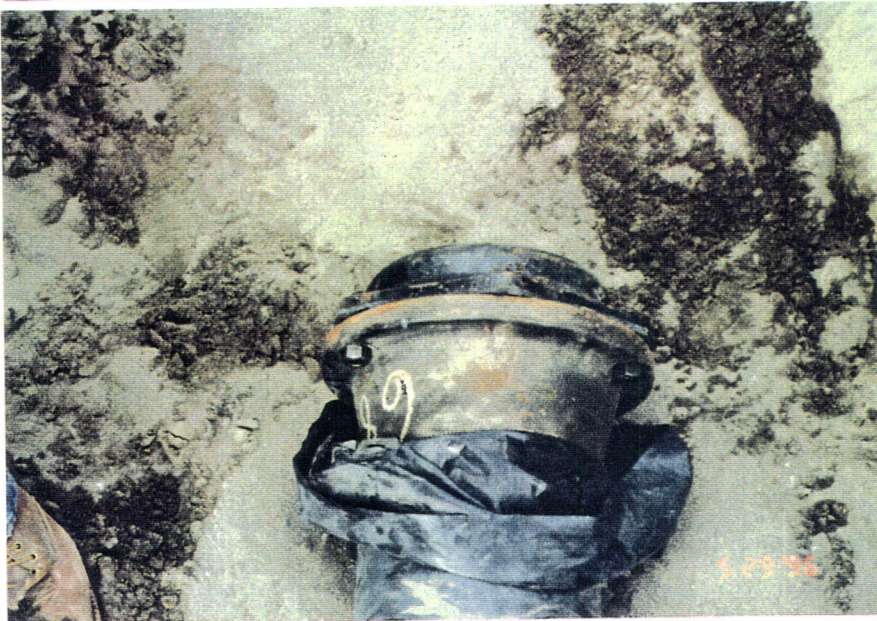


G960135-12-O-P

Leak check at the
flange during the
hydrotest activities.



G960135-13-O-P



G960135-14-O-P

After the hydrotest was completed the pipe was wrapped and backfill commenced. (three view).



G960135-15-O-P















