

G960030-



G960030-01-O-P

Segregating the existing Tumbleweed in preparation for burning.



G960030-02-O-P

Burning Tumbleweed northwest arm.



G960030-03-O-PV

Burning Tumbleweed northwest arm.



G960030-04-O-P

Typical repaired pipe joint using a Dresser Coupling at one end and a o-ring hub joint on the other end.



G960030-05-O-P

Typical air vent, installed at all high point to prevent damage to the system at start up of the pump.



G960030-06-O-PV

Men at work, repair of the waterline to the pond.



G960030-07-O-

Concrete pour continues while under stringent monitoring.



G960030-08-O-

Concrete pour continued for the walls at the Corner Station.



G960030-09-O-P1

Complete poured foundation wall.



G960030-10-O-1

Placing concrete for the Temporary transformer slab.



G960030-11-O-P

PUD supplied electrical bake-out vaults



G960030-12-O-PV

Typical PUD installed electrical bake-out vault.

G960030-

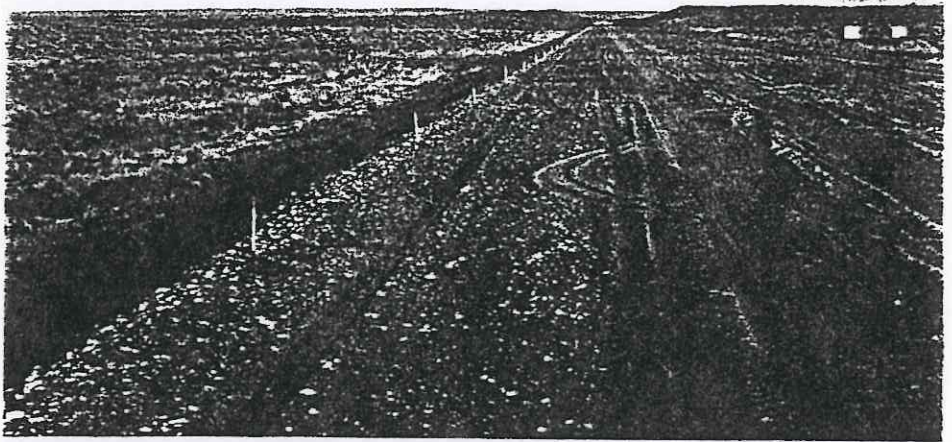
WA, Hanford

March '96

Day of March 14th

No captions at
this time.

G960030-13 -O-PV



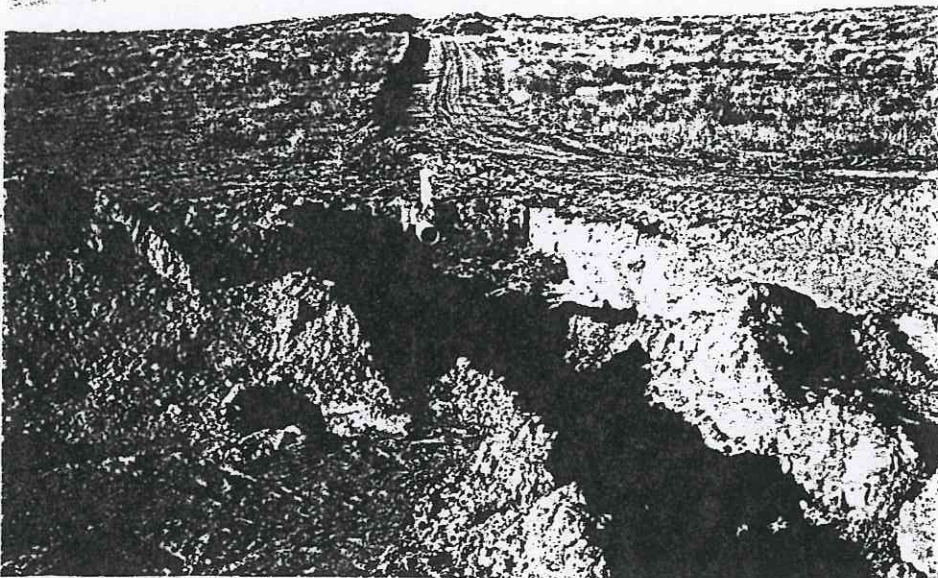
G960030-14 -O-PV



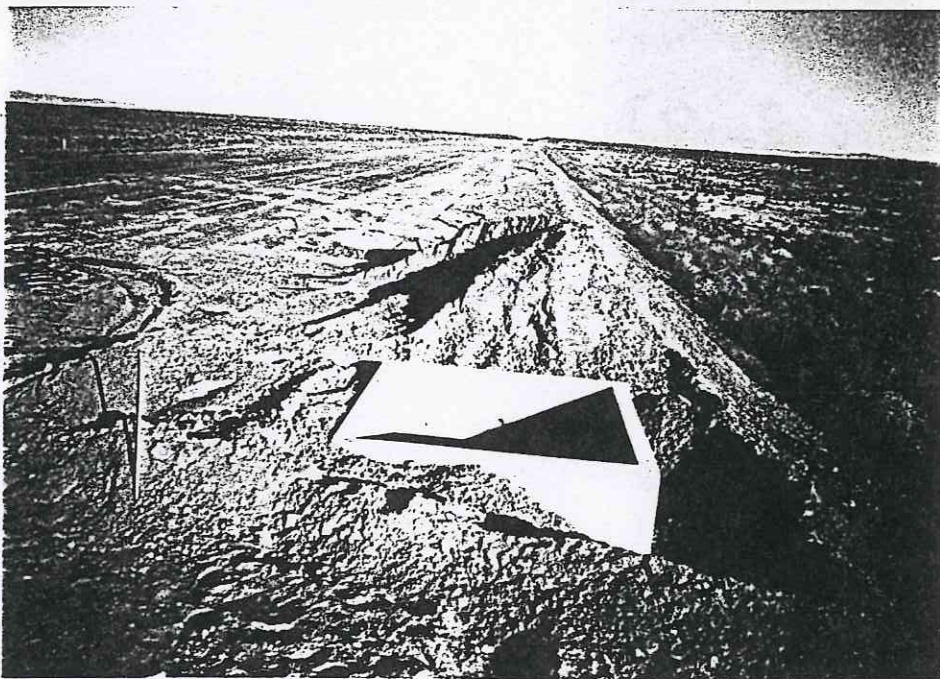
G960030-

WA, Hanford
March '96
Day of March 14th
No captions at
this time.

G960030-15-O-PV



G960030-16-O-PV





G960030-17 -O- P

Northwest arm looking west, road closed for Tumbleweed burning.



G960030-18 -O- P

Equipment ready for Tumbleweed burning, Fire Department on stand by.



G960030-19 -O- P

First lighting of the tumbleweed, northwest arm.



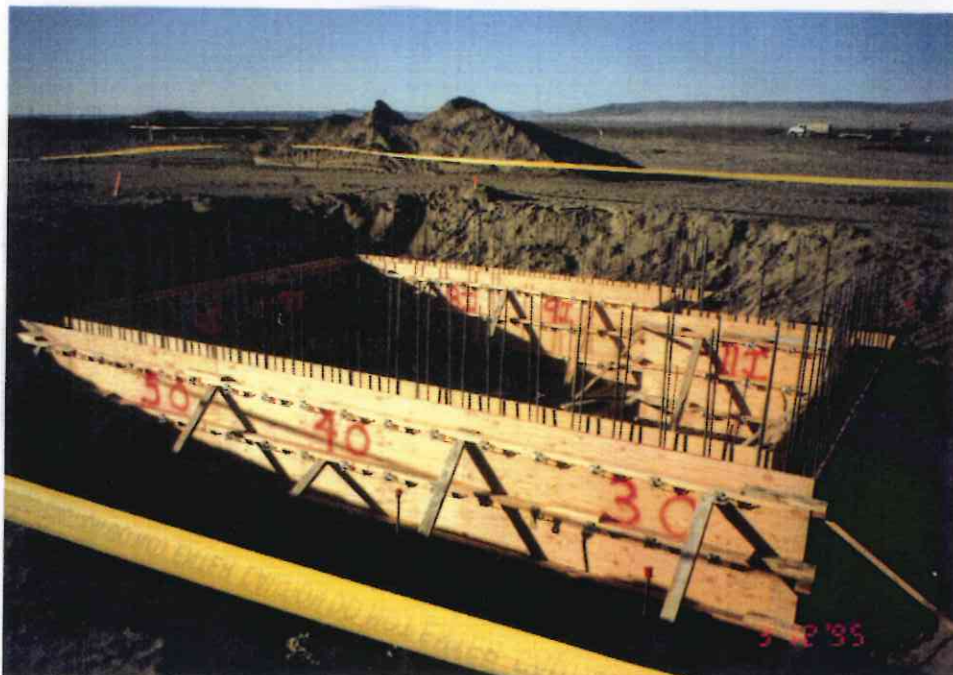
G960030-20-O-P

Typical Vacuum
Equipment Interface
Slab Walls forming
and re-bar
installation.



G960030-21-O-P

Typical Vacuum
Equipment Interface
Slab Wall forming
and re-bar
completed.



G960030-22-O-P

Typical Vacuum
Equipment Interface
Slab Wall, forming
and re-bar
completed. Inspected
and ready to pour
concrete.



G960030-23-O-1

Day of the first concrete pour for the Vacuum Equipment Interface Slab at the northwest arm Mid Station.



G960030-24-O-1

Successful start of concrete placing.



G960030-25-O-1

Rigorous inspection and witness Team.



G960030-26-O-

Quality Assurance
inspector at site



G960030-27-O-1

Slump Test, Spec. 3",
actual 3 1/4"



G960030-28-O-1

Air entrainment test.
spec 5-7% actual 7%