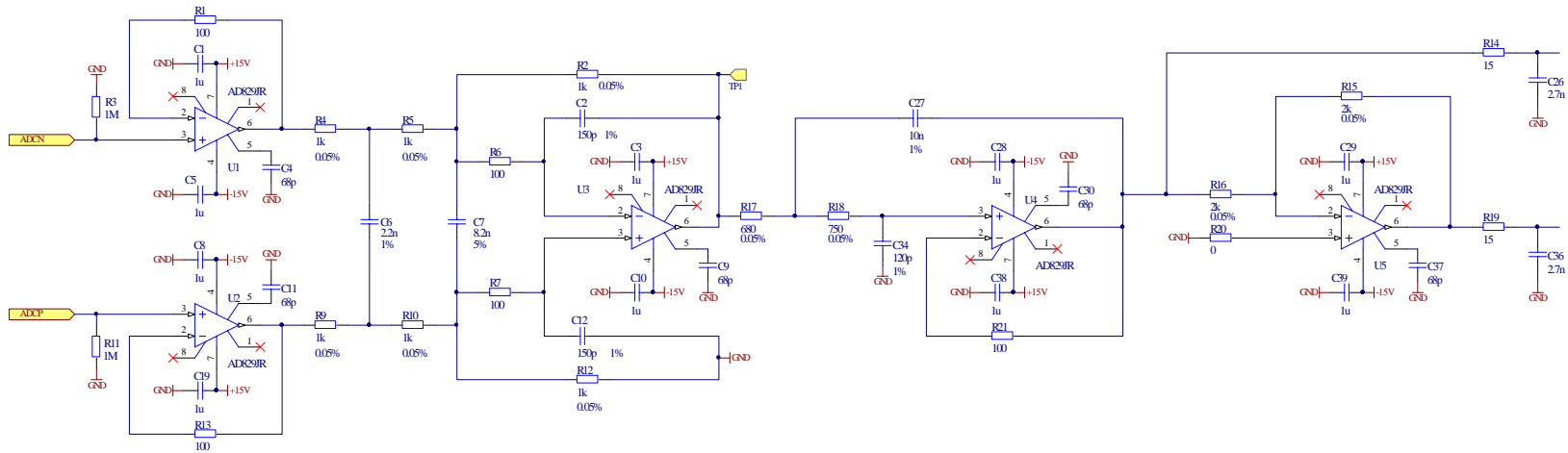


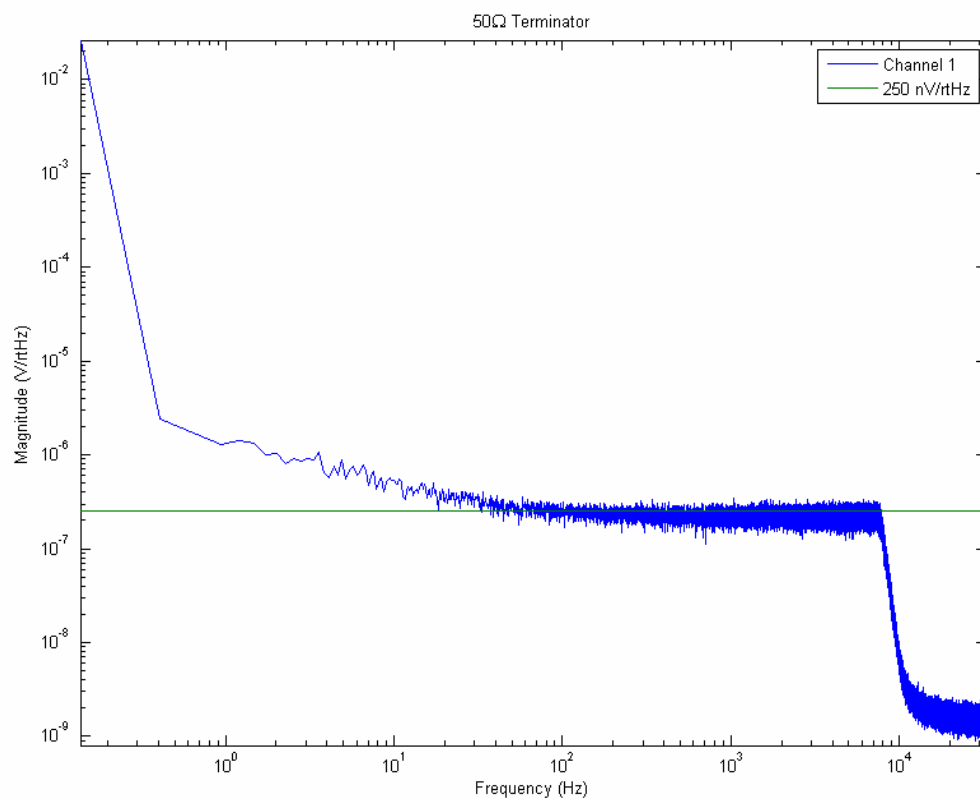


ADC Test Board Performance Review





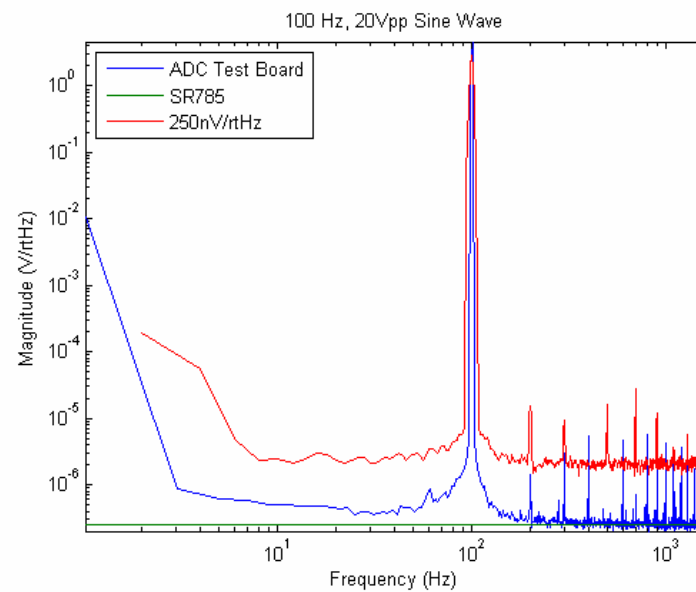
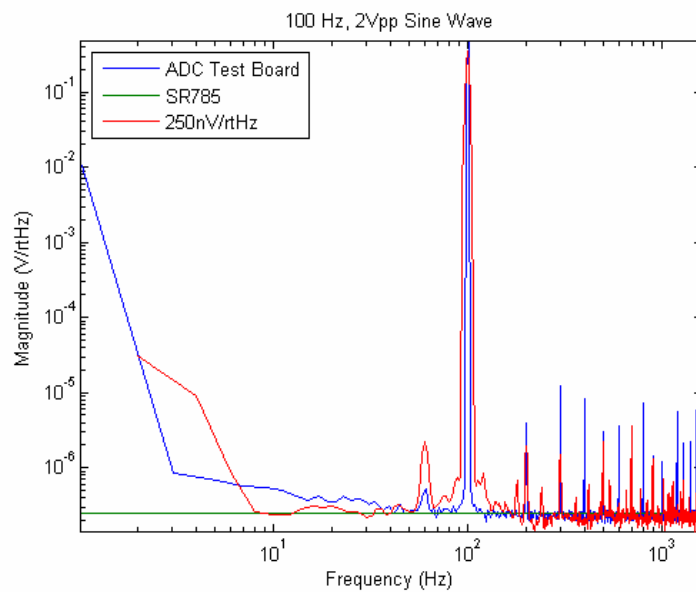
Noise Performance



ADC FOM (Other FOM data from T060158.)	
ADC TB	164 dB
PC166	132 dB
Pentek 6102	116 dB
ICS 110B	142 dB

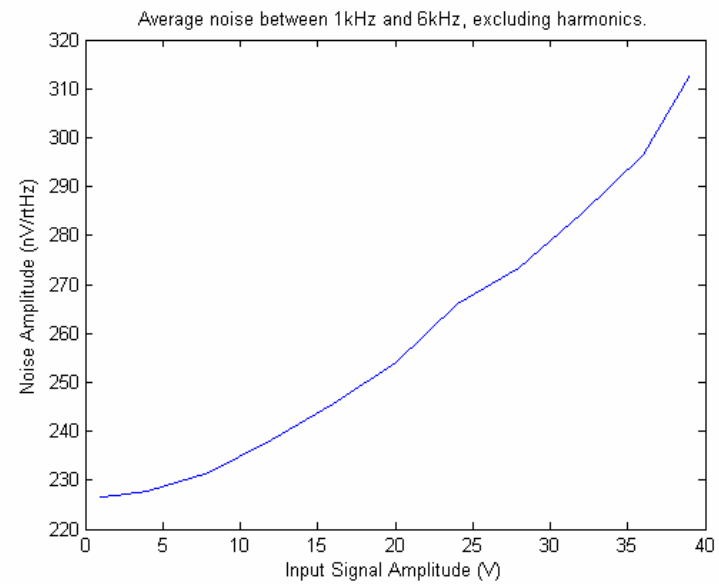
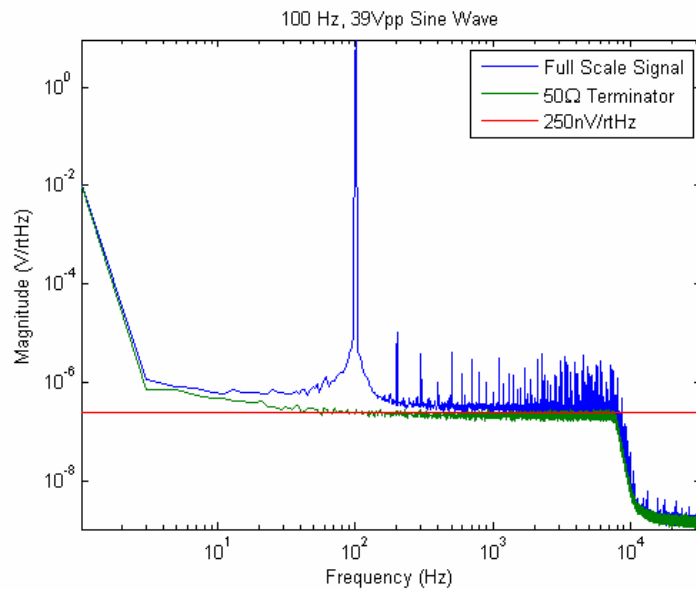


Noise Performance Continued



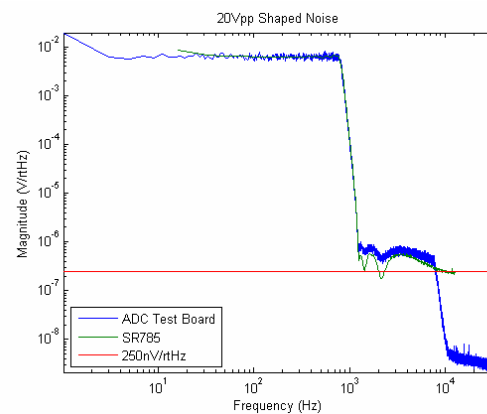
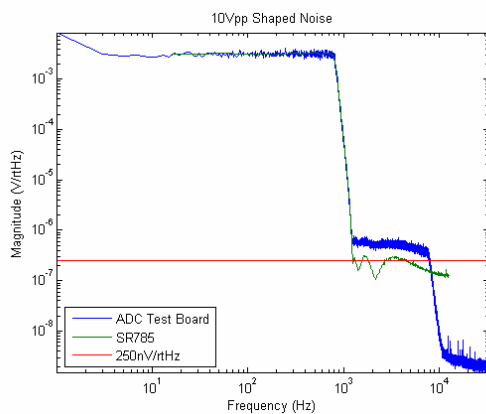
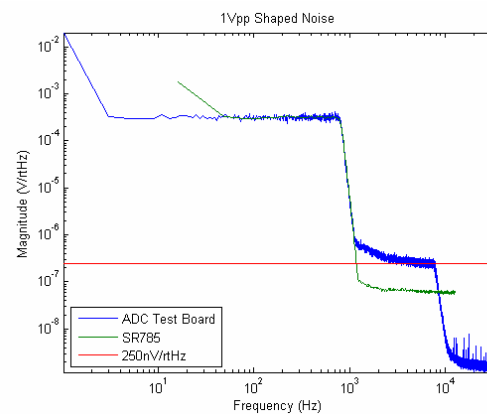
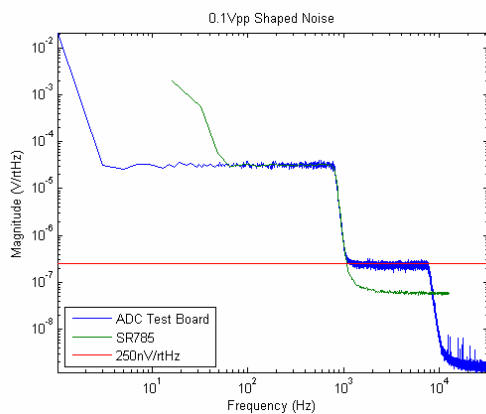


Noise Performance Continued



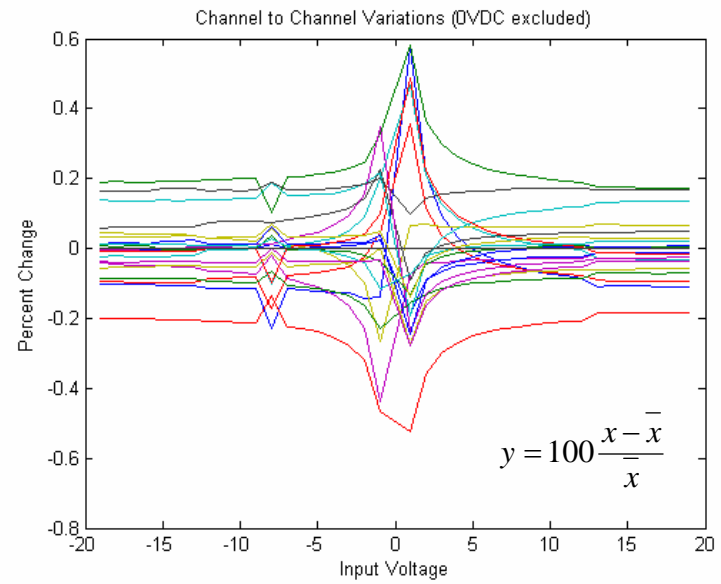
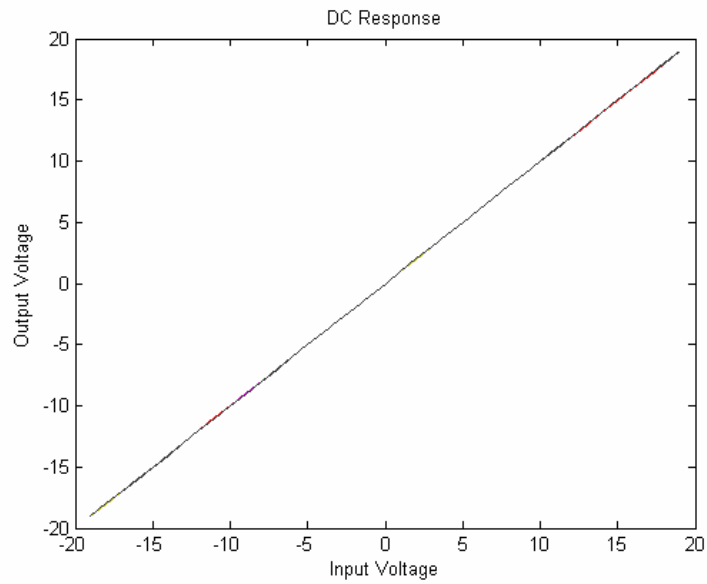


Shaped Noise Tests

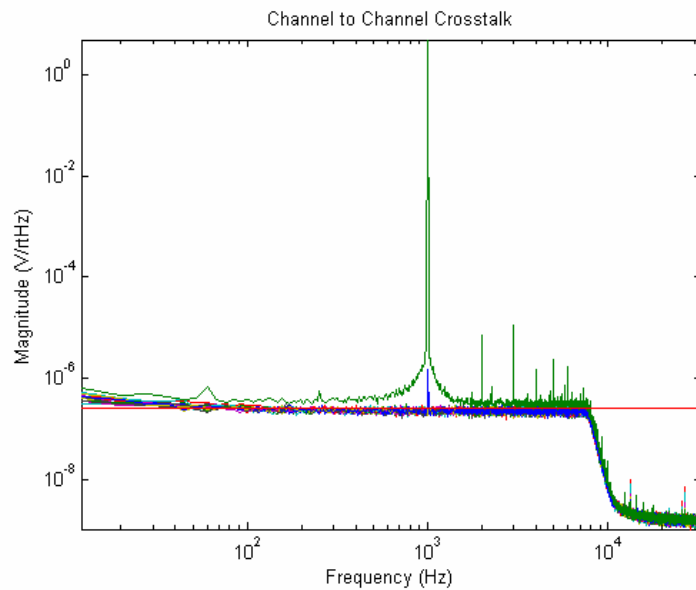




DC Response



Crosstalk

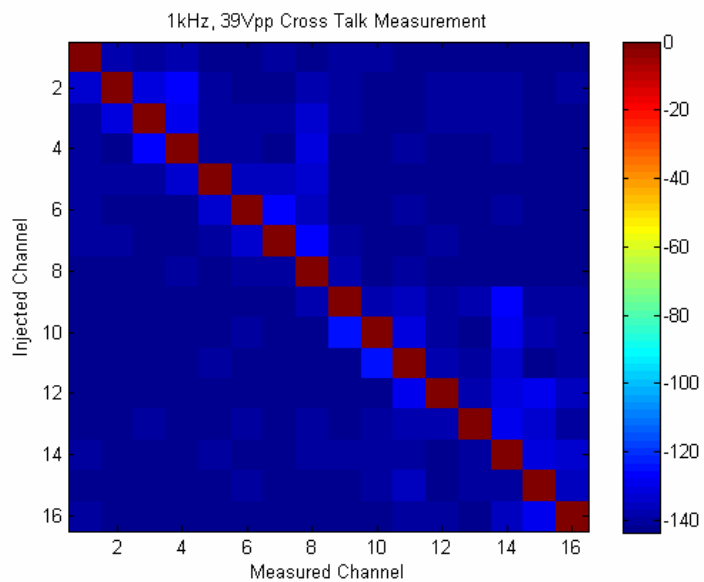


- 1kHz, 39Vpp sine wave injected on one channel, others terminated with 50 ohms
- Response measured on all channels



Crosstalk Continued

- -125dB maximum
- -132dB average





To Do List

- Finish analysis
 - » THD
- Continue testing
 - » Out of band rejection
 - » Two tone injection
 - » Common mode rejection
- Clean up PCB
- Scale up for production/develop automated testing