

Update on Thermal Noise Experiments at Syracuse University

S. D. Penn, G. M. Harry,
A. M. Gretarsson, S. E. Kittleberger,
P. R. Saulson, J. J. Schiller, J. R. Smith,
S. O. Swords

Syracuse University

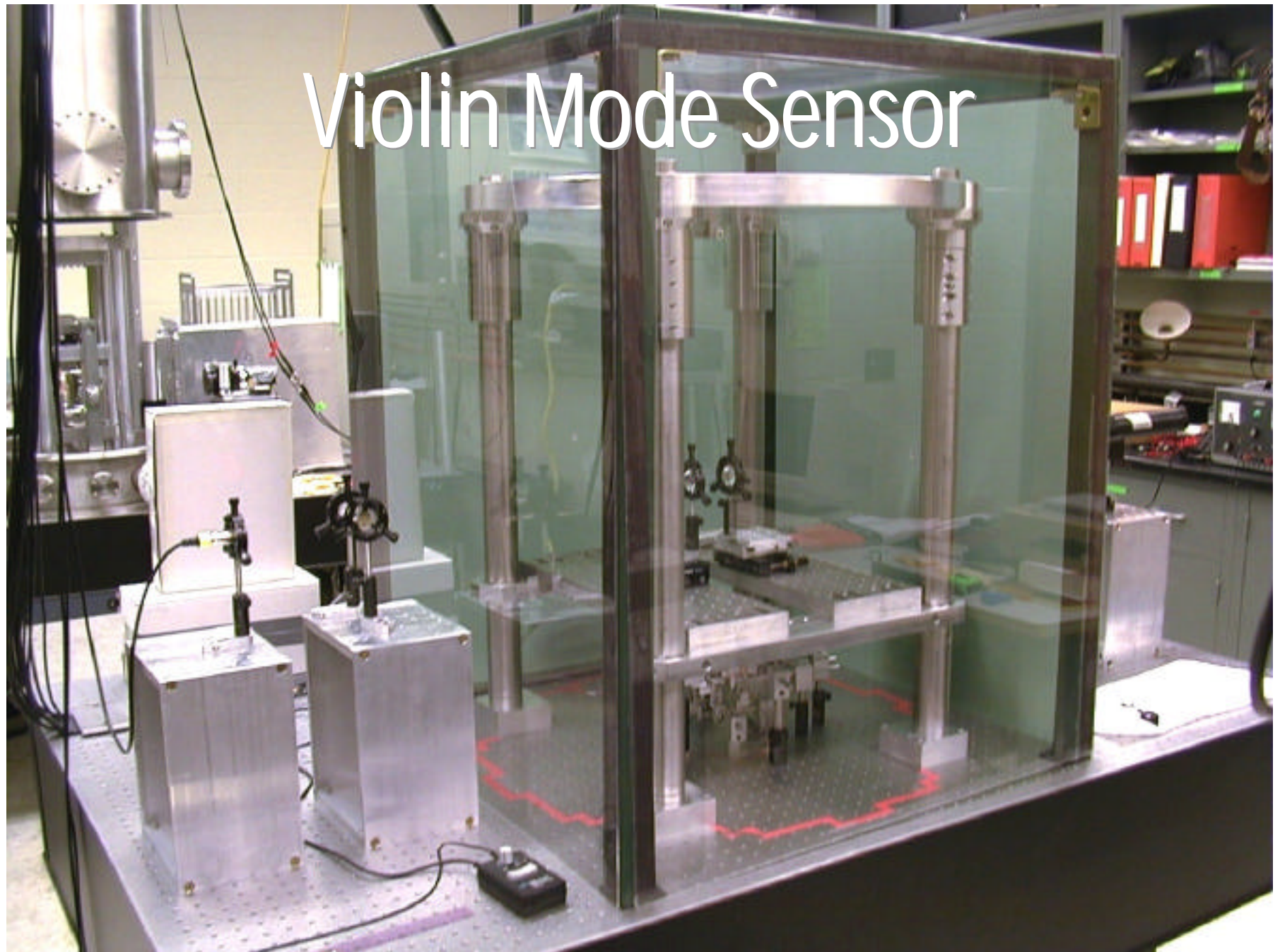
LSC Meeting • August 2000

LIGO-G000272-00-D

Coating Experiment

- Measured uncoated Q on a 16.5 cm diameter, 2 cm thick disk. $Q = 3.5 \times 10^6$
- Disk was coated at REO just prior to LSC
- Using smaller, 7.5 cm diameter, 2.5 mm thick, polished but not flat, disks
 - 1st welded directly to suspension
 - 2nd connect by bonded ear

Violin Mode Sensor



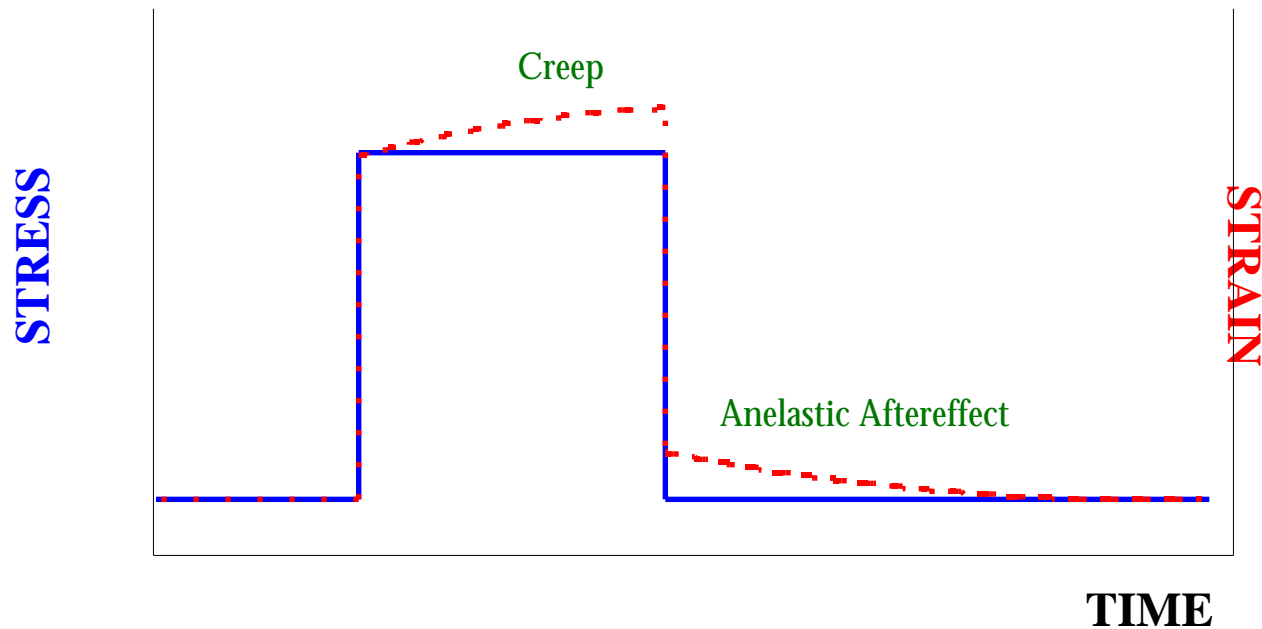
Violin mode sensor

- Non vacuum mock up made with stainless steel fiber
- Feedback controls for all pendulum modes
- Laser noise eater working
- Seismic noise seen
 - may have to build isolation
- Preliminary results: thermal noise measured in one violin mode, in air, with steel wire

Anelastic Aftereffect Experiment

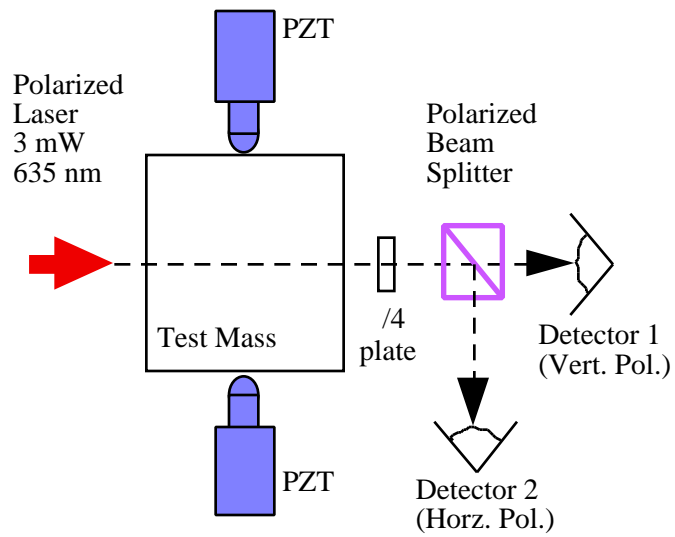
- Anelastic Aftereffect is a function of Dissipation in Bulk Mass in the 1 Hz – 1 kHz Frequency Range
- Provides a Direct Measure of $\phi(f)$ in contrast to at Resonance:
 $\phi = 1/Q$
- Tests our Assumptions for Structural Damping, and Thermoelastic Damping
- For Glass Test Masses, Anelastic Aftereffect can be Measured using the Stress-Induced Birefringence (see *RSI* paper by M. Beilby, P. Saulson and A. Abramovici)

We measure the Anelastic Aftereffect in Optically Transparent Test Masses via Stress-Induced Birefringence.

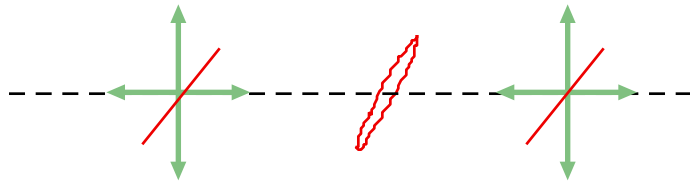


$$\phi f = \frac{1}{2\pi\tau} \quad \frac{\pi}{2} \frac{dJ(\tau)}{d \ln \tau}$$

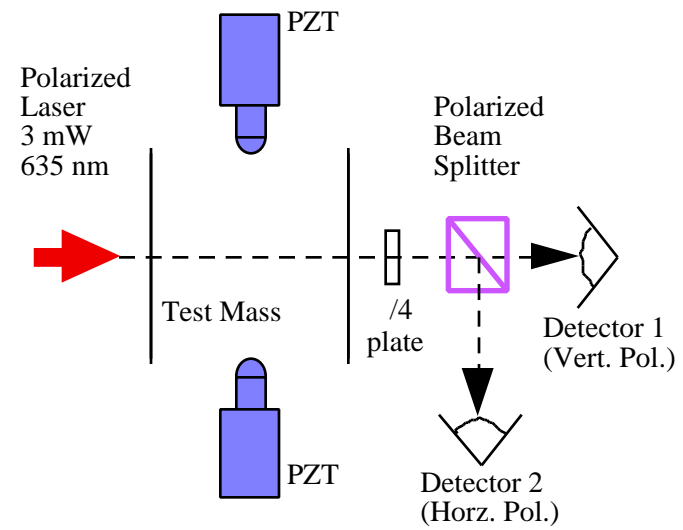
UN-SQUEEZED STATE



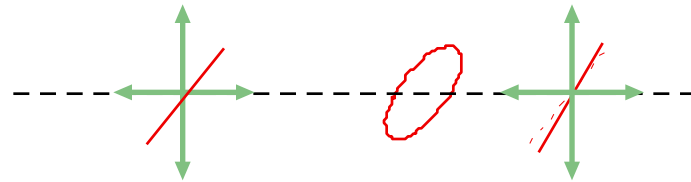
Polarization (looking downstream)



SQUEEZED STATE



Polarization (looking downstream)

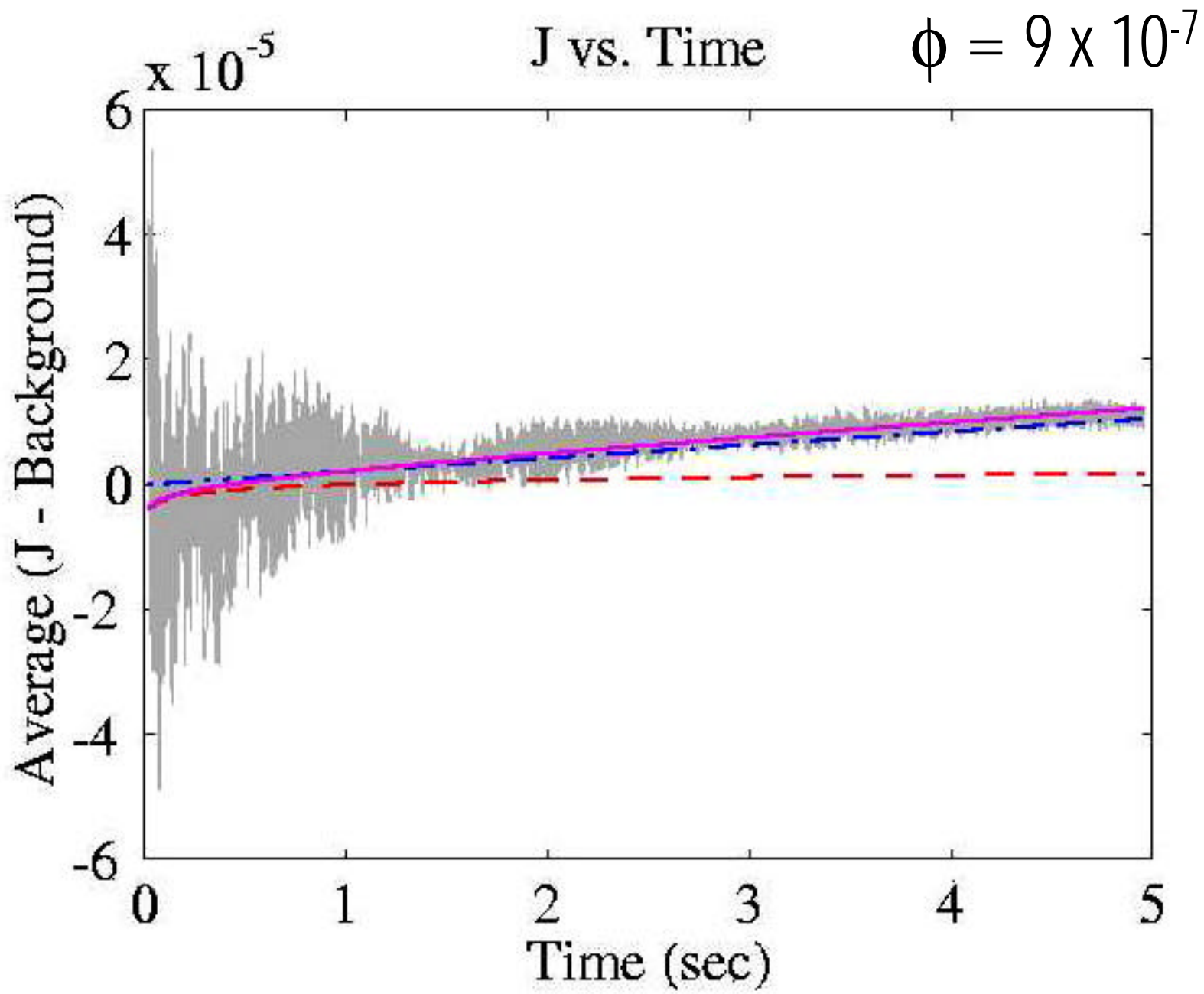


Anelastic Aftereffect



Anelastic Aftereffect





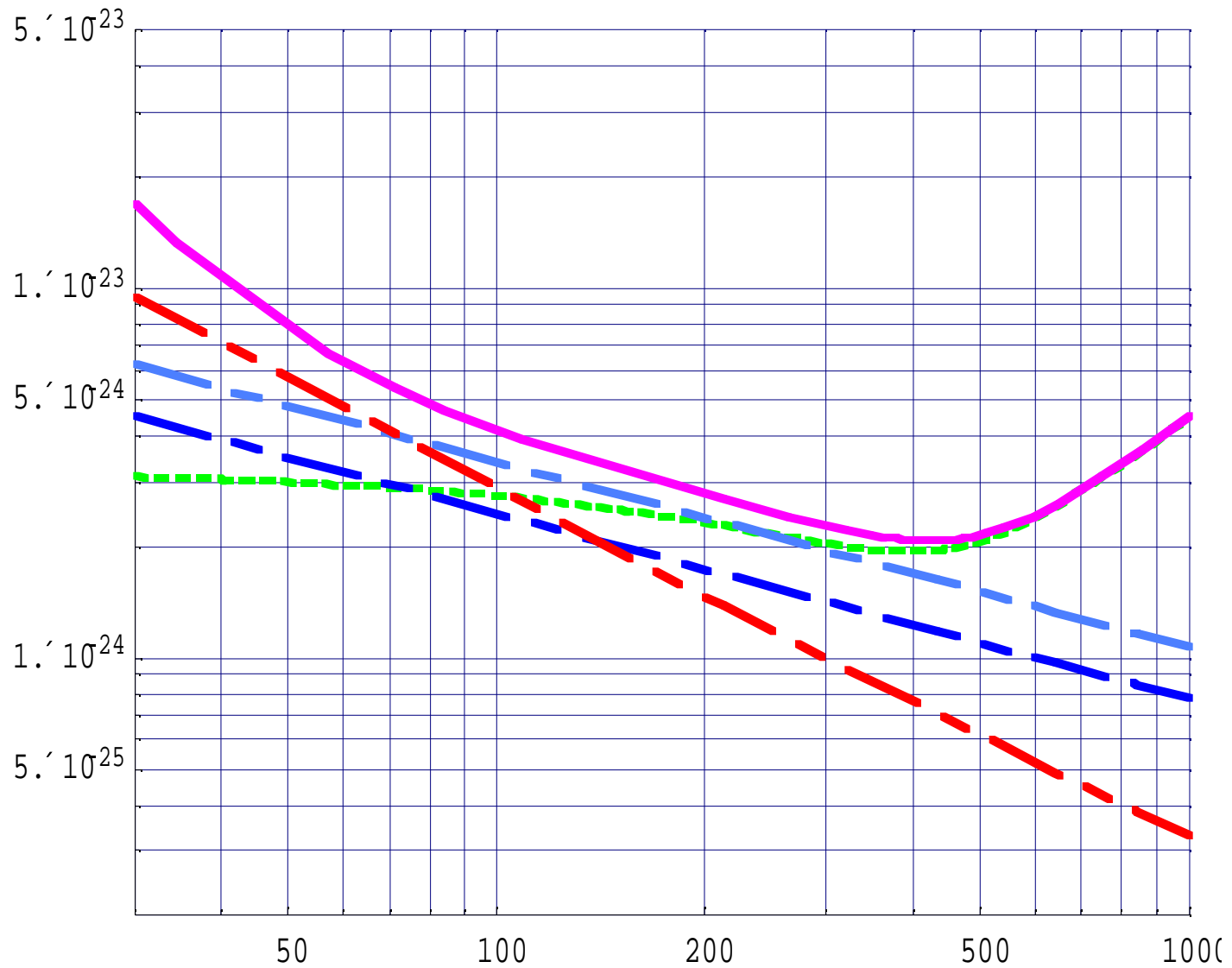
Recent Progress in Anelastic Aftereffect

- New wire sling mount in use. Primary suspension modes characterized and subtracted from output signal.
- Mock data software has tested the ability of the data analysis software to extract $\phi < 10^{-8}$ from data.
- Mock data reveals that incomplete oscillation removal inflates ϕ by >100 .
- FEA package tested by modeling modes in fibers and disk samples.
- Work in progress to use FEA package to model stress profile in fused silica and sapphire.

Current Status in Anelastic Aftereffect

- Statistical error at 10^{-8} , but Systematic errors from the mounts are on the 10^{-7} level.
- Fused Silica has been just beyond our reach. Mounting and alignment difficult with vise which squeezes with 10^5 N and 1 mil clearance on either side. Sling mount fully implemented. Ultimately we could resort to silicate bonding.
- Mock data generator verifies accuracy of analysis code.
- Sapphire ϕ should be easily measurable barring any problems with birefringence.

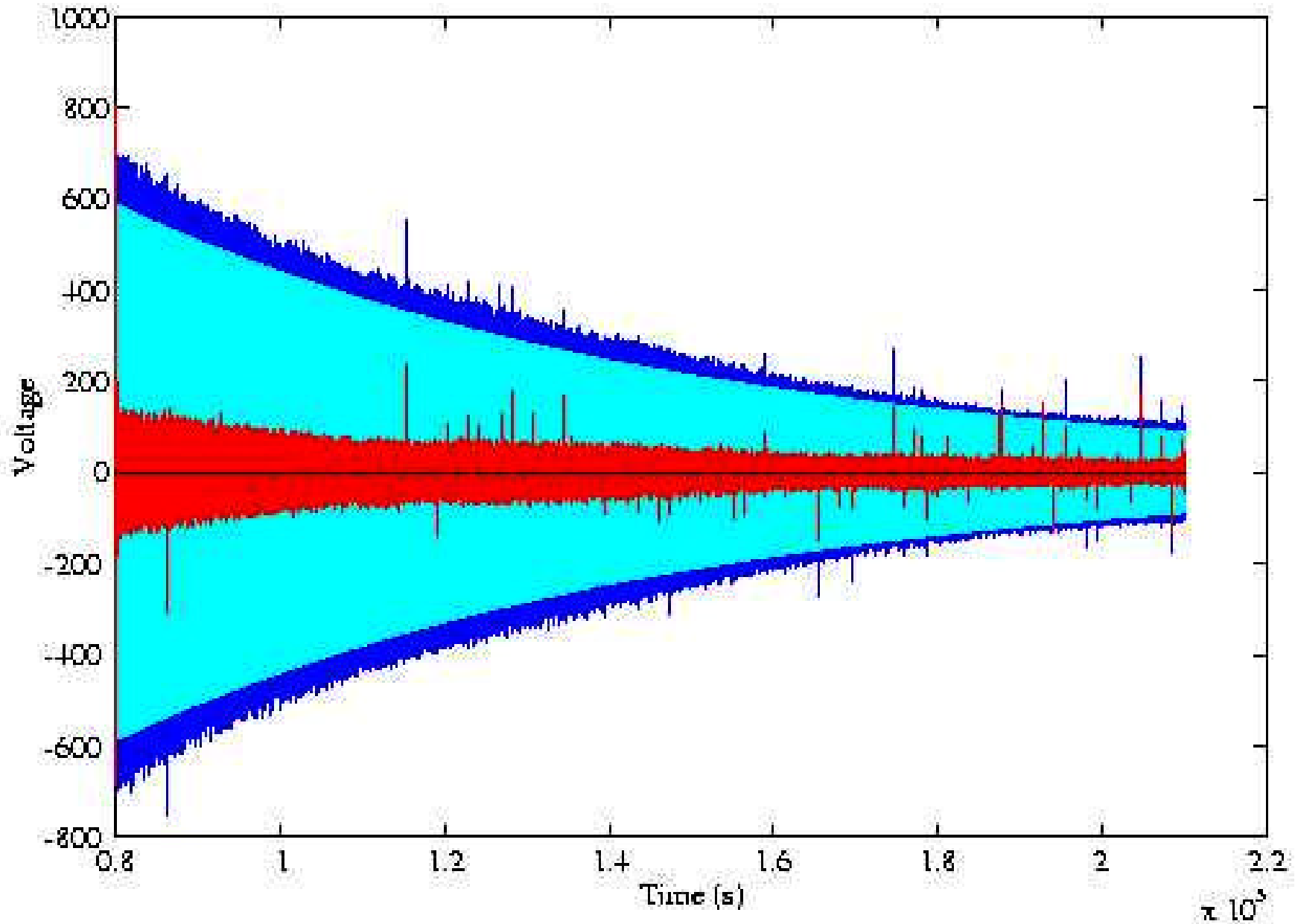
Measuring Sapphire in Anelastic Aftereffect



Future Plans

- Ringdown experiment with silicate bonded fused silica rods (with J. Hough and S. Rowan)
- Ellipsometry experiment to measure coating ϕ on excess 40 m mirror
- Anelastic aftereffect measurements on sapphire including thermoelastic damping
- Further ϕ vs temperature work

File: 081400a.dat, Freq = 305.870Hz, Tau = 68701.084s, Q = $6.602e+07 \pm 3.262e+04$



FLUCTUATION-DISSIPATION THEOREM

- $x_{\text{therm}}^2(f) = \frac{k_B T}{\pi^2 f^2} \text{Re}[Y(f)]$

where $Y(f) = v(f)/F(f)$ and $\text{Re}[Y(f)] = 2\pi f\phi(f)/k$

and the spring constant is $k(1 + i\phi(f))$

- At resonance $\phi(f_n) = \frac{1}{Q_n}$

- For a test mass under an harmonic stress, ϕ is the phase shift in the strain.

- OR, we can derive ϕ from measurements of the anelastic aftereffect or creep

Prospects for Measuring ϕ of Sapphire with Anelastic Aftereffect

- Fused silica $\phi < 10^{-6}$ but systematics from the test mass mount limit our sensitivity
- Thermoelastic Noise in Sapphire is calculated to be $\phi(f = 1 \text{ Hz}) \approx 10^{-5}$ (quite detectable?)
- Inherent Birefringence may prove troublesome for our suspended mounts
- Large Stress-induced birefringence must be achievable with our PZT vise