

Sept 1999 40m Data Run

People:

Dick Gustafson, Steve Vass, Keith Riles,
Stuart Anderson, Albert Lazzarini, W.M.

Sep 17 04:00:00 - Sep 19 14:00:00

Best Performance: 1×10^{-17} (m/(\sqrt{Hz}))

40m works better at night

Evenings:

.2-1 hours > 90% locked

Mornings:

.1-.5 hours 50-80% locked

Locks were better 2nd and 3rd day (weekend)

Develop Software tools

- Create database containing statistics and simple query tools
- Develop Perl scripts to automate data processing
- Develop software to interact with database and extract desired channels during specified time intervals
- Develop tools to characterize the run

Data Analysis issues under study

- Characterize the quality of the data
- Study non-stationarity of the data
- Study non-gaussianity of the data
- Look for burst events

Outliers in the time series

Match filtering techniques

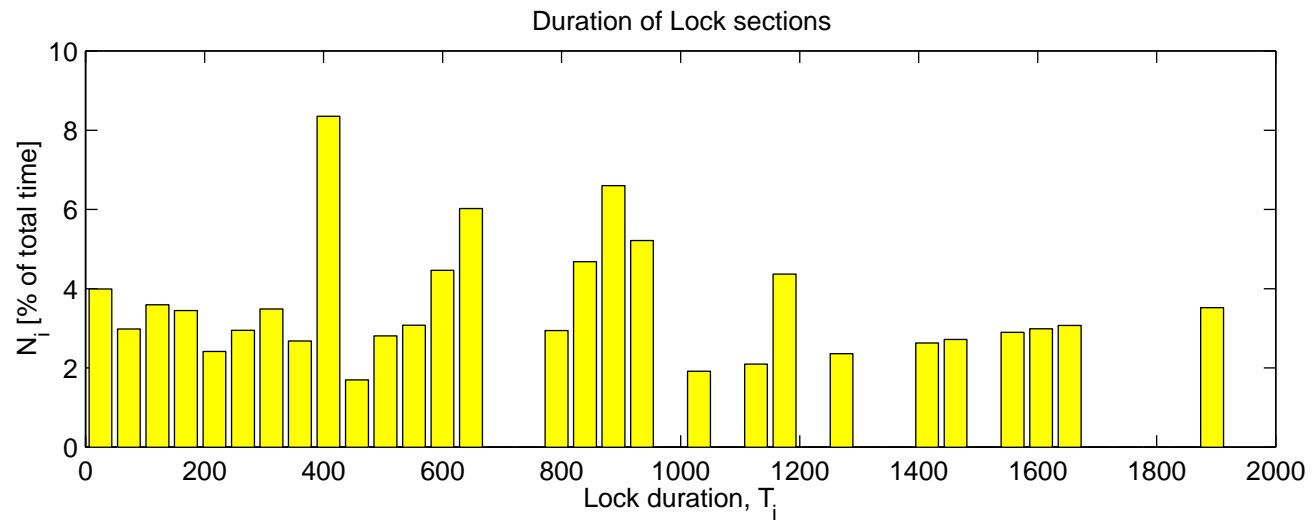


Figure 1

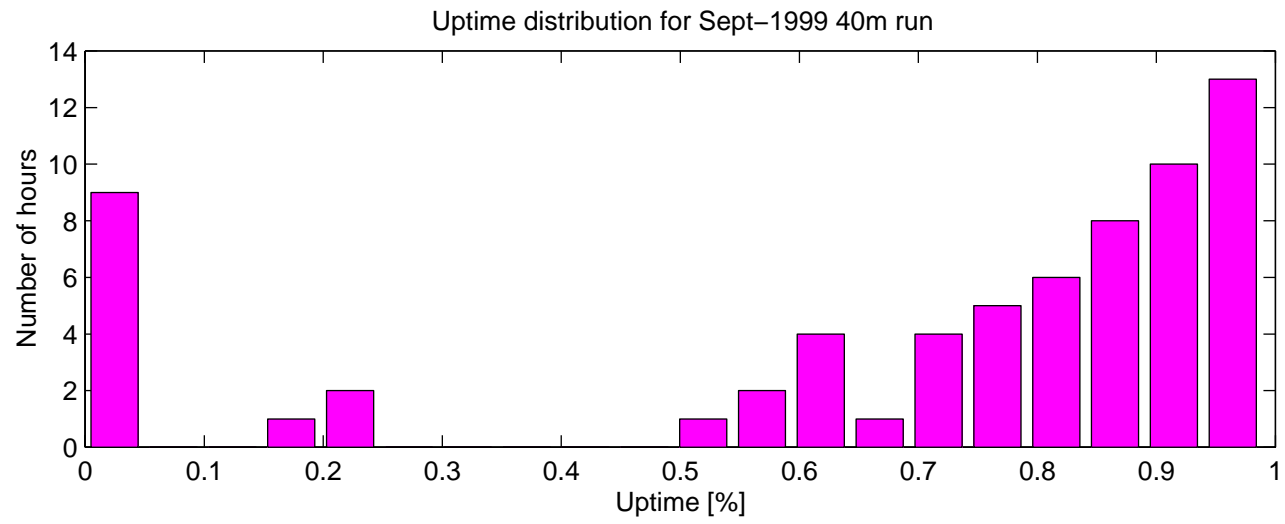


Figure 2

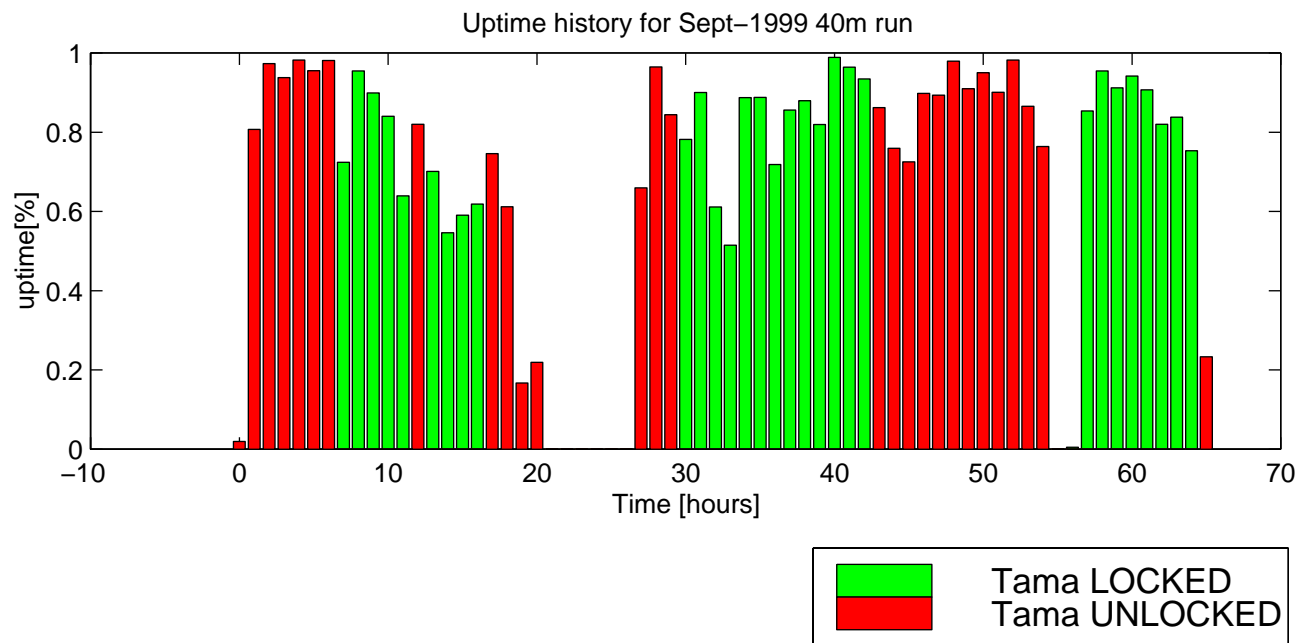


Figure 3

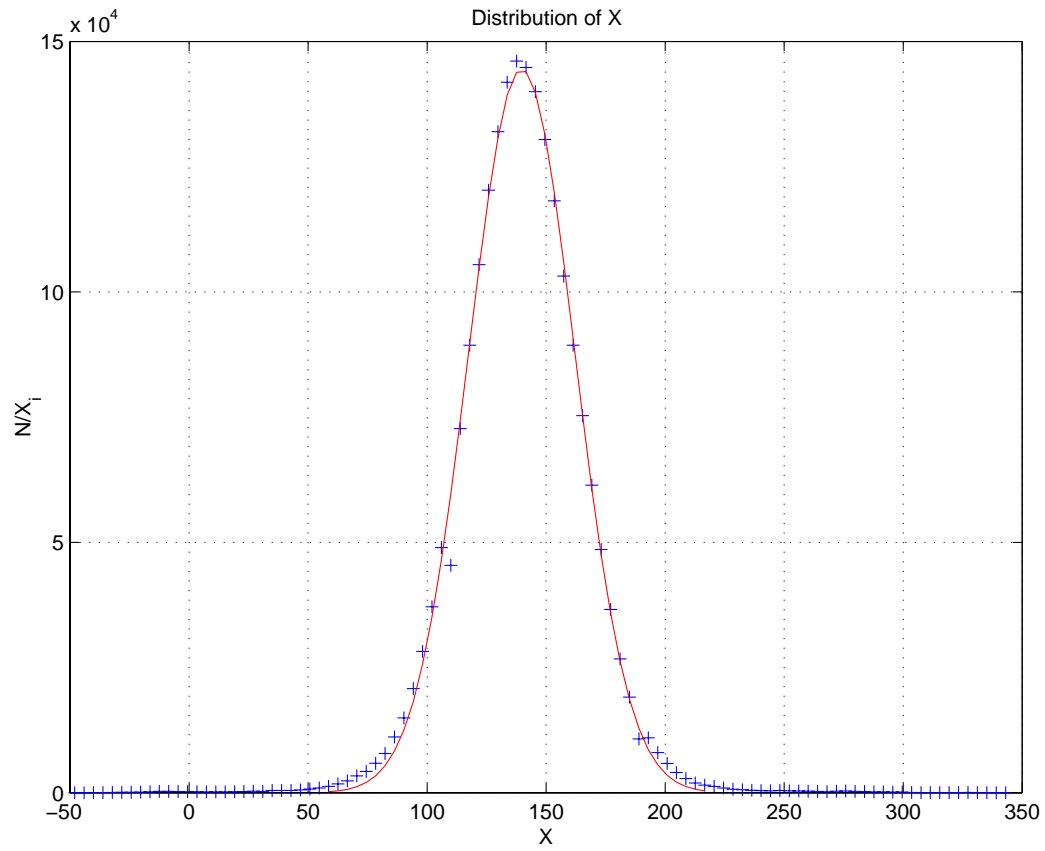


Figure 4

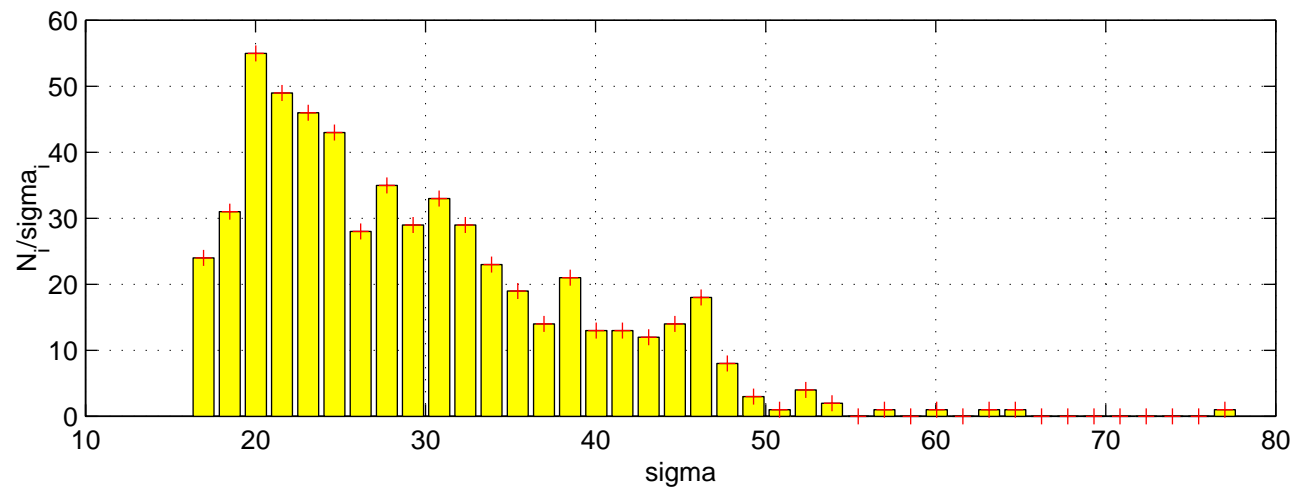
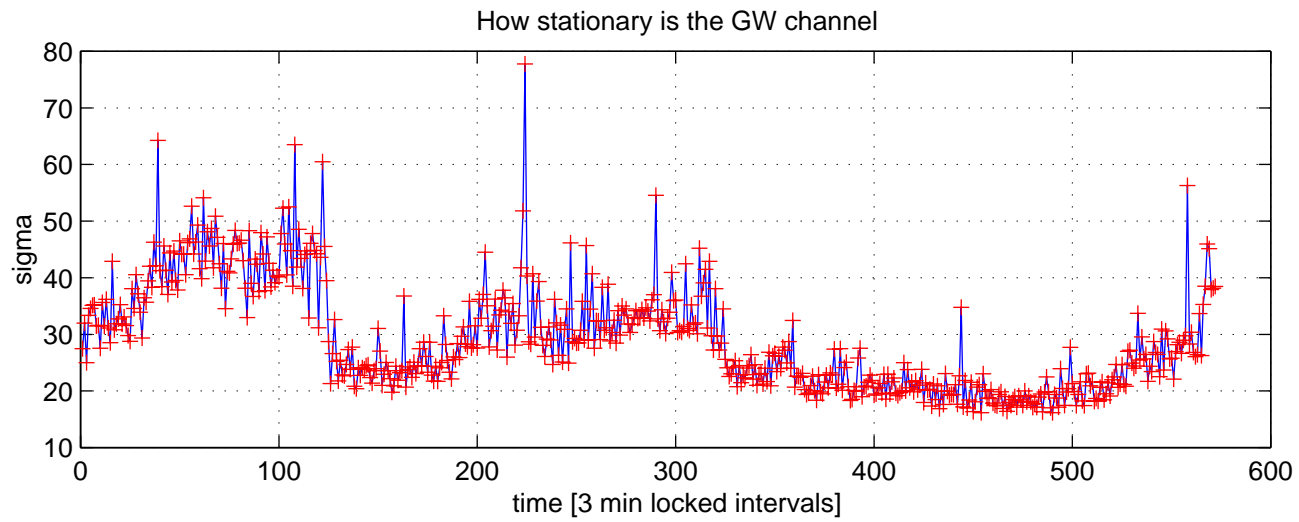


Figure 5