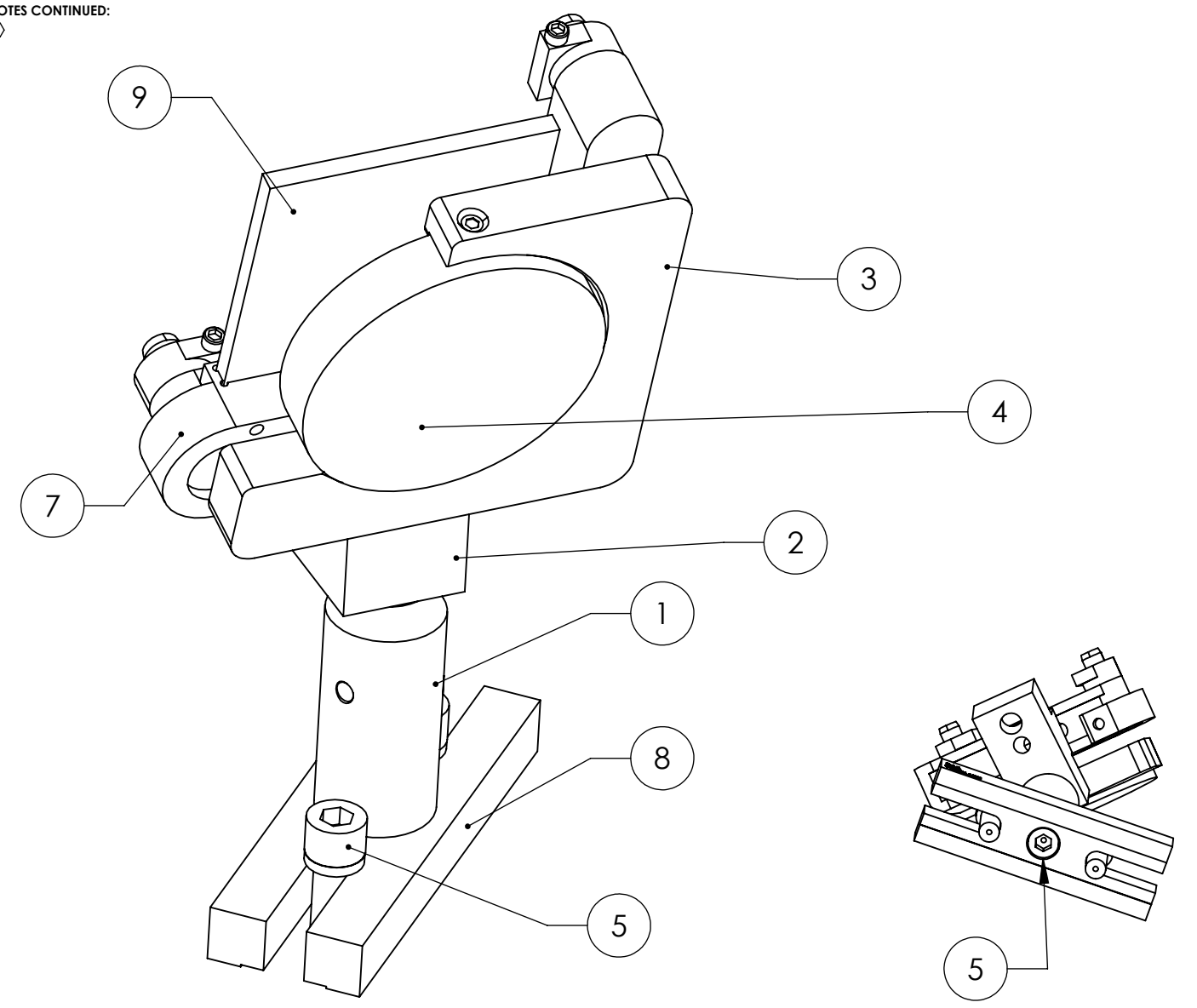


D1100257\_ISC\_TransMon\_Compound\_Angled\_Mirror\_Mount\_RIGHT\_Assembly, PART PDM REV: X-000, DRAWING PDM REV: X-000

NOTES CONTINUED:  


REV.	DATE	DCN #	DRAWING TREE #
-	-	-	-
-	-	-	-
-	-	-	-

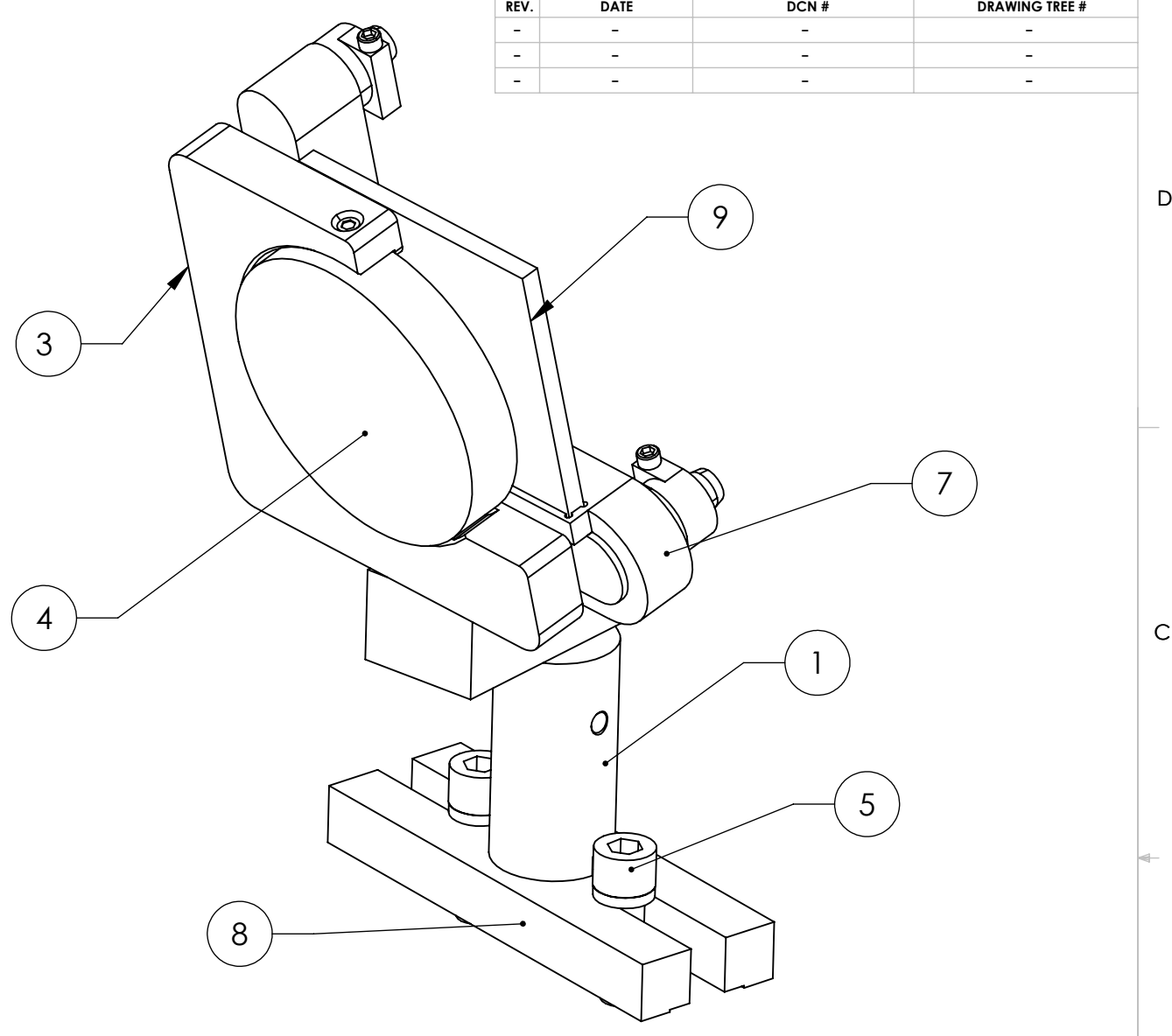
D  
C  
B  
A



9	D1002703	ISC - 2" Mirror Mount Black Glass	TRANSPARENT GLASS	1		1
8	D1002059	ISC MOUNTING BASE - DOUBLE	6061-T6 Al	1		1
7	D1002071	ISC - Mirror Mounted Black Glass Clip	6061-T6 Al	1		1
6		1/4" HIGH COLLAR LOCK WASHER, 18-8 SST	18-8 SSTL	2		2
5	C-2012-N	1/4"-20 X 0.75" SHCS	18-8 SSTL	5		5
4		2" OPTIC	TRANSPARENT GLASS	1		1
3	IXM200.C2-RH	2" MIRROR MOUNT - RH, SISKIYOU	6061-T6 Al	1		1
2	D1100244	ISC ANGLED MOUNTING BASE	6061-T6 Al	1		1
1	D1001116	ISC Short Mounting Post	6061-T6 Al	1		1
ITEM NO.	PART NUMBER	DESCRIPTION	MATERIAL	REQ	SPARE	TOTAL
PARTS LIST						

**NOTES AND TOLERANCES: (UNLESS OTHERWISE SPECIFIED)**

<p>DIMENSIONS ARE IN  TOLERANCES:  .XX ±  .XXX ±  ANGULAR ± °</p>	<p>1. INTERPRET DRAWING PER ASME Y14.5-1994.  2. REMOVE ALL SHARP EDGES, .005-.015, FOR MACHINED PARTS. ROUND ALL EDGES APPROXIMATELY R.02 FOR SHEET METAL PARTS.  3. DO NOT SCALE FROM DRAWING.  4. ALL MACHINING FLUIDS MUST BE FULLY SYNTHETIC, FULLY WATER SOLUBLE AND FREE OF SULFUR, SILICONE, AND CHLORINE.</p>	<p><b>MATERIAL</b> N/A</p> <p><b>FINISH</b> N/A μinch</p>
---	--	---



9	D1002703	ISC - 2" Mirror Mount Black Glass	TRANSPARENT GLASS	1		1
8	D1002059	ISC MOUNTING BASE - DOUBLE	6061-T6 Al	1		1
7	D1002071	ISC - Mirror Mounted Black Glass Clip	6061-T6 Al	1		1
6		1/4" HIGH COLLAR LOCK WASHER, 18-8 SST	18-8 SSTL	2		2
5	C-2012-N	1/4"-20 X 0.75" SHCS	18-8 SSTL	5		5
4		2" OPTIC	TRANSPARENT GLASS	1		1
3		2" MIRROR MOUNT - LH	6061-T6 Al	1		1
2	D1100244	ISC ANGLED MOUNTING BASE	6061-T6 Al	1		1
1	D1001116	ISC Short Mounting Post	6061-T6 Al	1		1
ITEM NO.	PART NUMBER	DESCRIPTION	MATERIAL	REQ	SPARE	TOTAL
PARTS LIST						

<p><b>SYSTEM</b> LIGO</p> <p><b>NEXT ASSY</b></p>	<p><b>CALIFORNIA INSTITUTE OF TECHNOLOGY</b>  <b>MASSACHUSETTS INSTITUTE OF TECHNOLOGY</b></p> <p><b>PART NAME</b> ISC TransMon Compound Angled Mirror Mount ASM</p> <p><b>DESIGNER</b> SBARNUM</p> <p><b>DRAFTER</b> SBARNUM</p> <p><b>CHECKER</b></p> <p><b>APPROVAL</b></p>	<p><b>DATE</b> 8 NOV 2012</p> <p><b>SCALE</b> 1:2</p> <p><b>PROJECTION</b></p>	<p><b>SIZE DWG. NO.</b> B D1100257</p> <p><b>REV.</b> v2</p> <p>SHEET 1 OF 1</p>
---	--	--	--

8 7 6 5 4 3 2 1