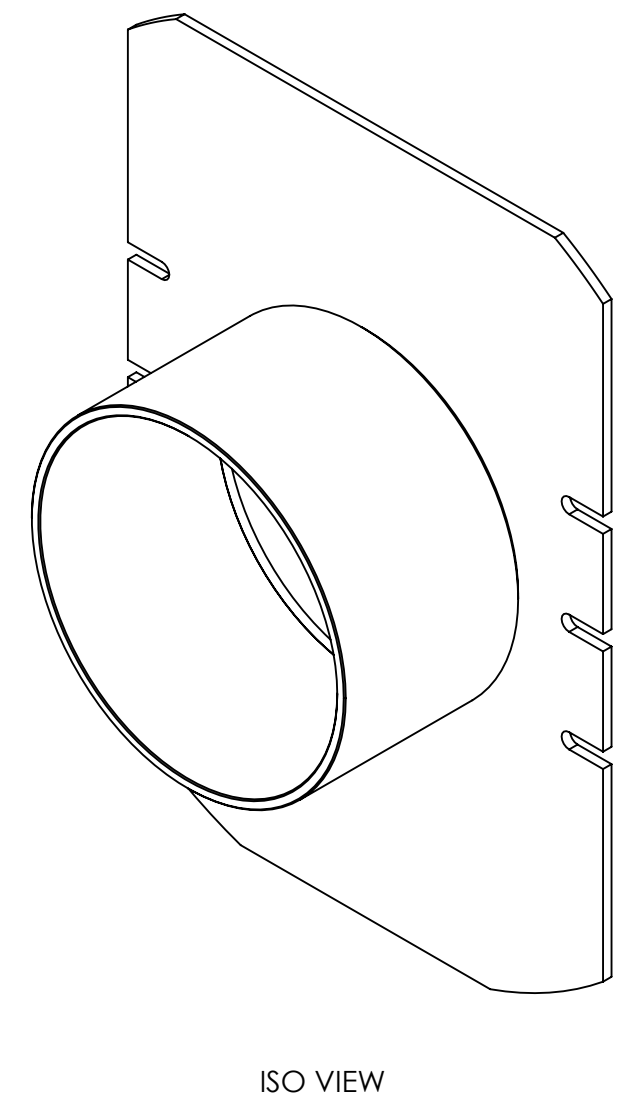
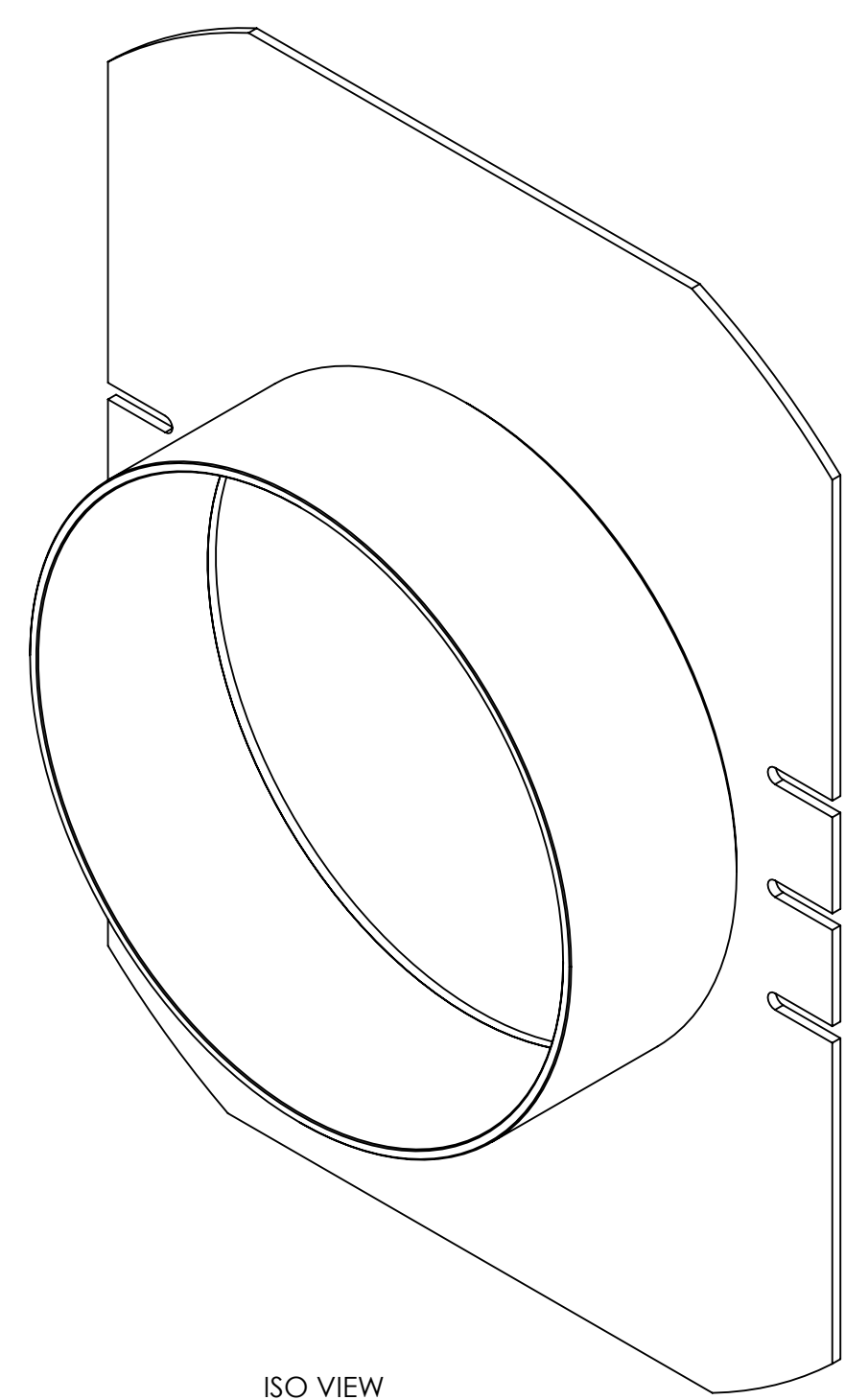
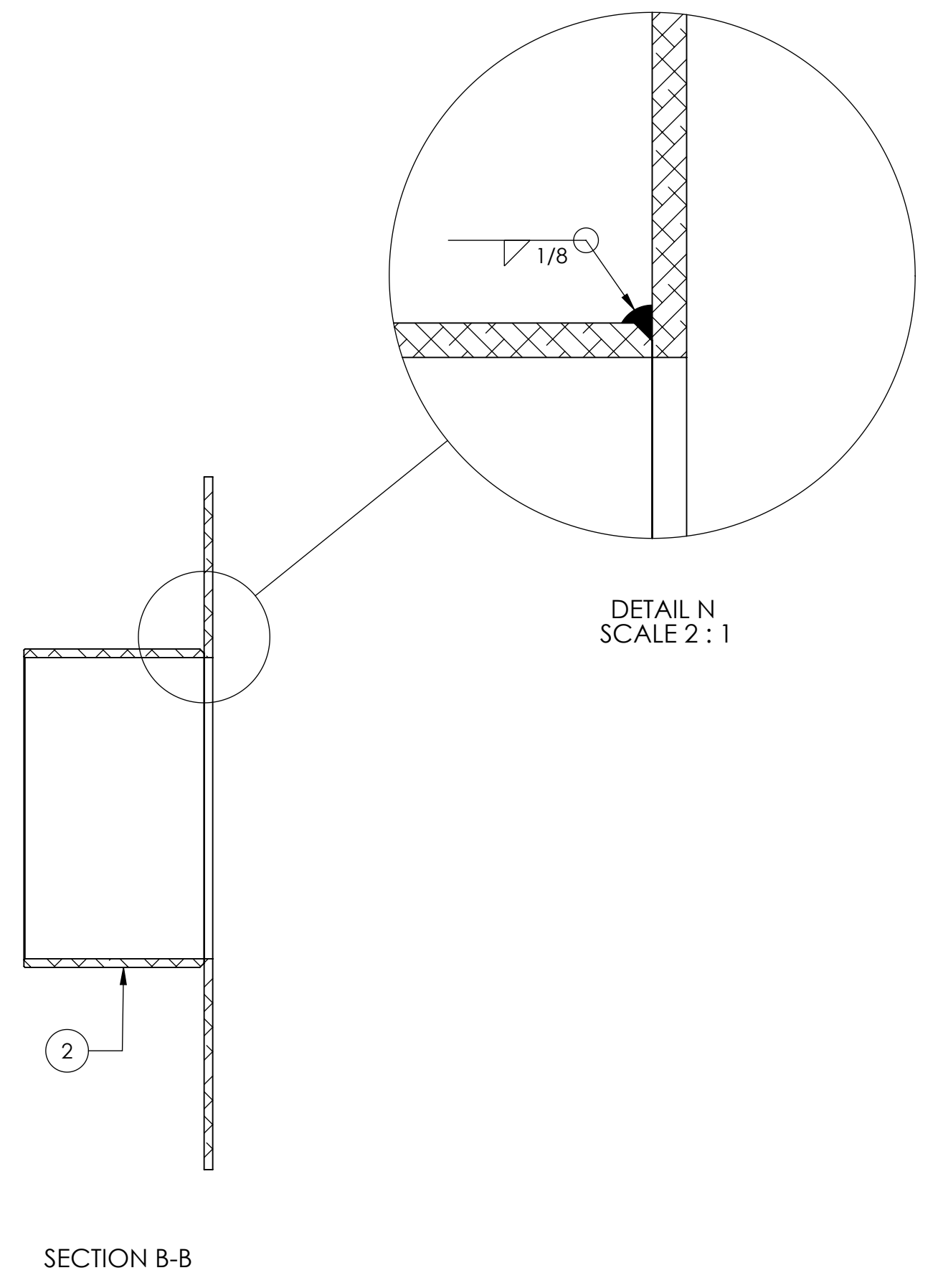
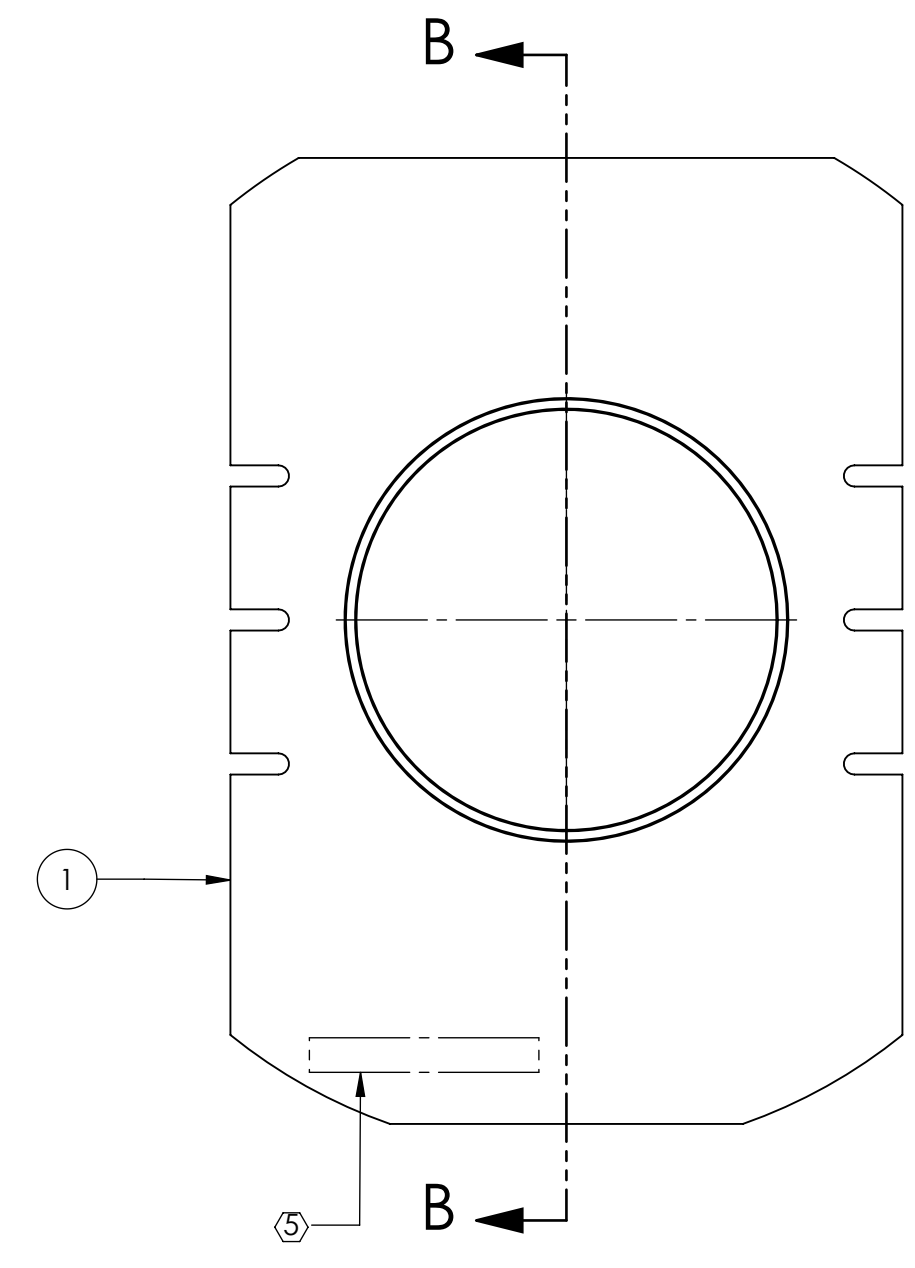
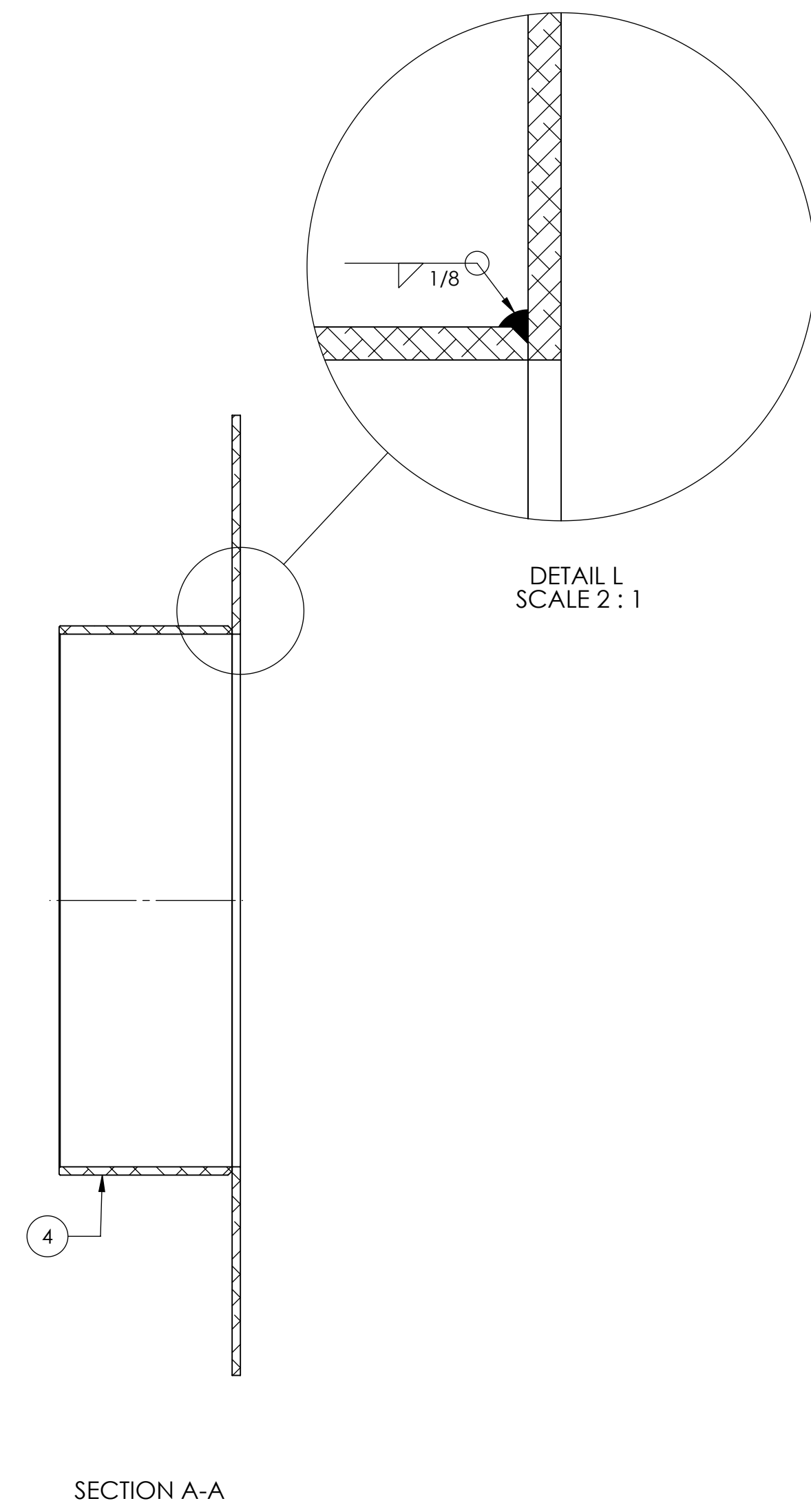
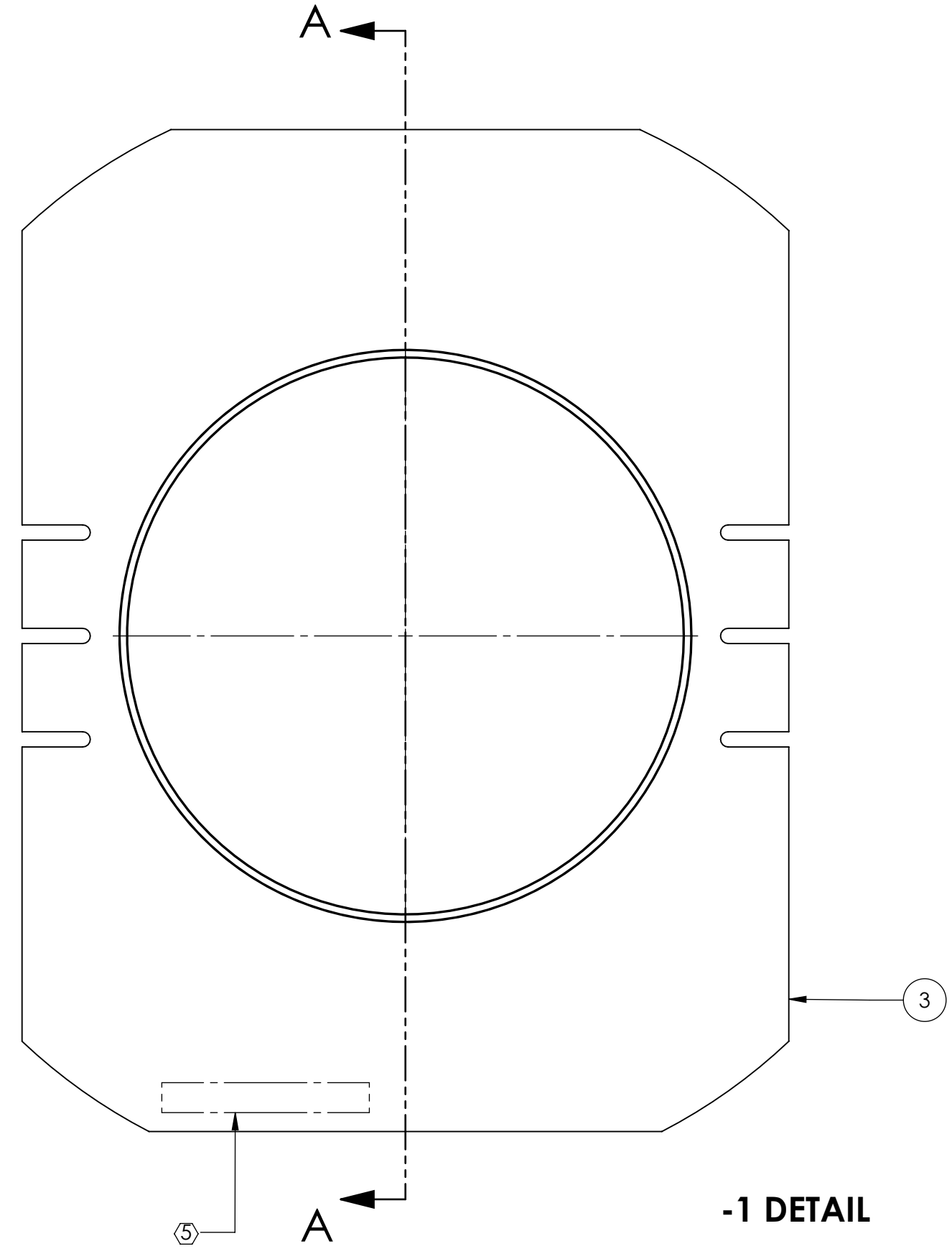


NOTES CONTINUED:  
 ⑤ SCRIBE, ENGRAVE (A VIBRATORY TOOL MAY BE USED), LASER MARK OR MECHANICALLY STAMP (NO INKS OR DYES) DRAWING PART NUMBER, REVISION (AND VARIANT OR "TYPE" IF APPLICABLE) ON NOTED SURFACE OF PART FOLLOWED ON THE NEXT LINE WITH A THREE DIGIT SERIAL NUMBER. SERIAL NUMBERS START AT 001 FOR THE FIRST ARTICLE AND PROCEED CONSECUTIVELY. USE MINIMUM 0.12" HIGH CHARACTERS, UNLESS THE SIZE OF THE PART DICTATES SMALLER CHARACTERS. EXAMPLE: DXXXXXX-VY, TYPE-XX, S/N XXX

REV.	DATE	DCN #	DRAWING TREE #
v1	17 MAY 2011	E1100426-x0	-
v2	13 MAR 2012	E1200268-x0	-
-	-	-	-



ITEM NO.	PART NUMBER	DESCRIPTION	D1100226/REQ	D1100226-1/QTY.
4	D1100213-1	ALIGO, AOS, OPLEV ENCLOSURE ASSY., XMTR FUNNEL, OPTICAL BELLOW MT.	-	1
3	D1100205-1	ALIGO, AOS, OPLEV PYLON ENCLOSURE ASSY., XMTR FRONT PANEL SHUTTER	-	1
2	D1100213	ALIGO, AOS, OPLEV ENCLOSURE ASSY., XCVR FUNNEL, OPTICAL BELLOW MT.	1	-
1	D1100205	ALIGO, AOS, OPLEV PYLON ENCLOSURE ASSY., XCVR FRONT PANEL SHUTTER	1	-

NOTES AND TOLERANCES: (UNLESS OTHERWISE SPECIFIED)

- INTERPRET DRAWING PER ASME Y14.5-1994.
- REMOVE ALL SHARP EDGES, .005-.015, FOR MACHINED PARTS. ROUND ALL EDGES APPROXIMATELY R.02 FOR SHEET METAL PARTS.
- DO NOT SCALE FROM DRAWING.
- ALL MACHINING FLUIDS MUST BE FULLY SYNTHETIC, FULLY WATER SOLUBLE AND FREE OF SULFUR, SILICONE, AND CHLORINE.

DIMENSIONS ARE IN INCHES  
 TOLERANCES:  
 .XX ± .01  
 .XXX ± .005  
 ANGULAR ± 1.0°

**ALIGO** CALIFORNIA INSTITUTE OF TECHNOLOGY MASSACHUSETTS INSTITUTE OF TECHNOLOGY  
 SYSTEM: ADVANCED LIGO SUB-SYSTEM: OPLEV  
 NEXT ASSY: D1100207 D1100209

PART NAME: ALIGO, AOS, OPLEV PYLON ENCLOSURE, FRONT PANEL SHUTTER WELDMENT  
 DESIGNER: E.SANCHEZ 15 MAY 2011  
 DRAFTER: E.SANCHEZ 15 MAY 2011  
 CHECKER: SEE DCC  
 APPROVAL: SEE DCC  
 SIZE: D DWG. NO. D1100226 REV. v2  
 SCALE: 1:2 PROJECTION: SHEET 1 OF 1

D1100226-ALIGO, AOS, OPLEV, PYLON ENCLOSURE ASSY., FRONT PANEL SHUTTER, PART PDM REV: X-002, DRAWING PDM REV: X-000