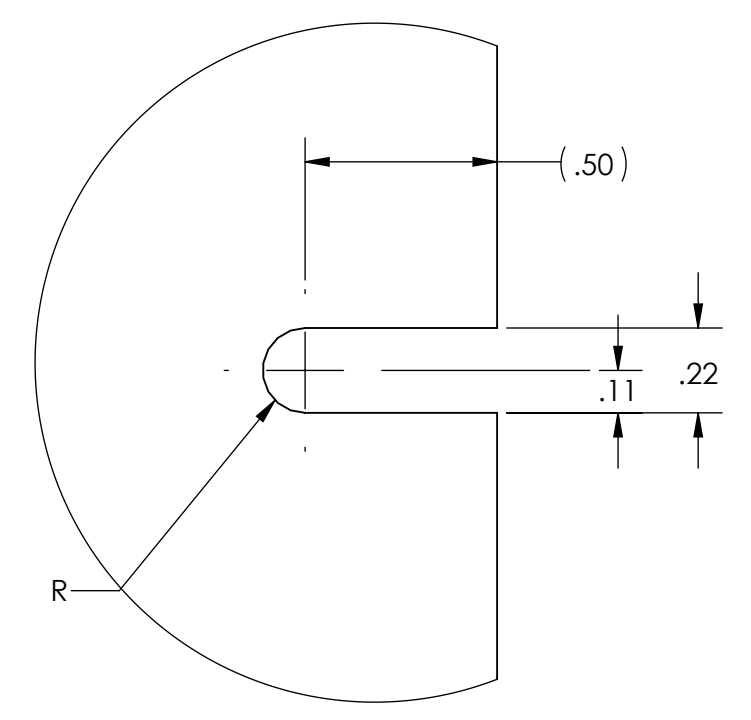
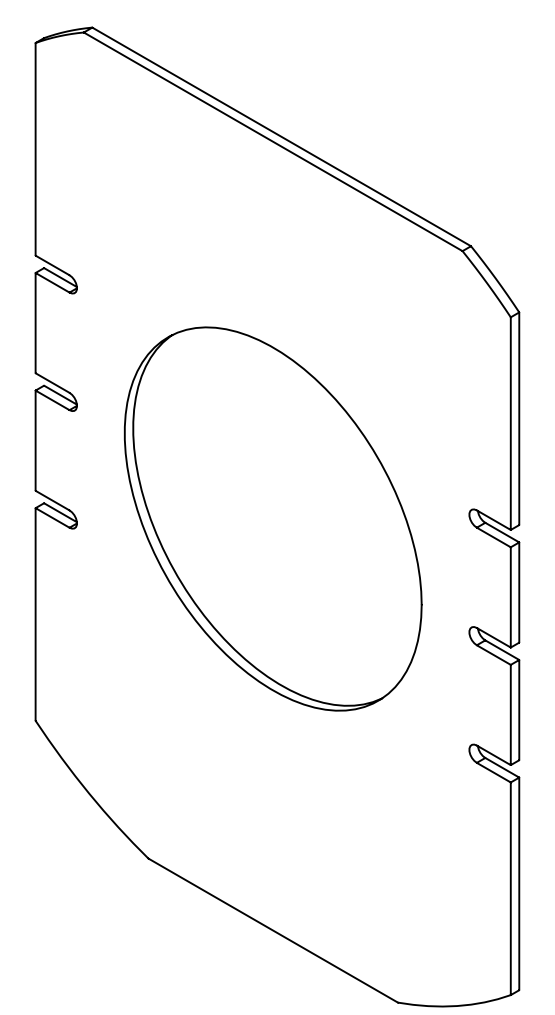


- NOTES CONTINUED:**
- APPROXIMATE WEIGHT = 3.94 LB.
 - ALL PARTS SHALL BE MANUFACTURED IN ACCORDANCE WITH LIGO SPECIFICATION E0900364.
 - ALL MATERIAL IS TO BE VIRGIN MATERIAL (i.e., NO WELD REPAIRS, PLUGS OR RECYCLED MATERIAL). NO REPAIRS SHALL BE MADE UNLESS APPROVED IN ADVANCE, AND IN WRITING, BY LIGO LABORATORY. REFER TO LIGO-E0900364.
 - SURFACE FINISH TO BE AS-PROCESSED FROM MILL/SUPPLIER, FREE FROM SCRATCHES OR GOUGES.
 - BEND RADIUS- UNLESS OTHERWISE NOTED, THE BEND RADIUS SHOULD BE THE MINIMUM REQUIRED TO FORM WITHOUT CRACKING OR REQUIRING ADDITIONAL WORK WHEN FORMING.

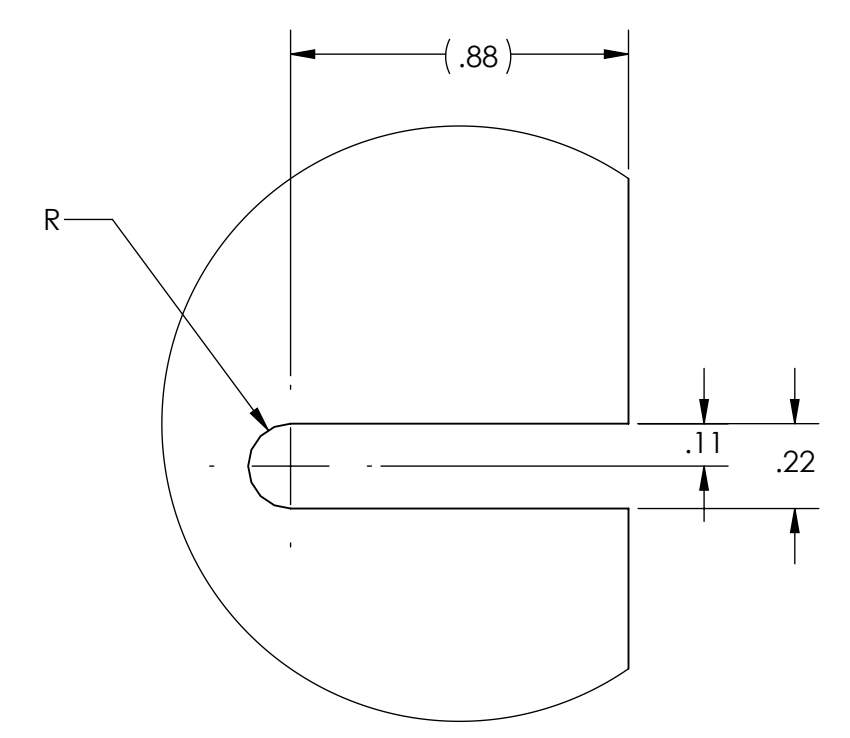
REV.	DATE	DCN #	DRAWING TREE #
v1	17 MAY 2011	E1100426-x0	-
v2	12 MAR 2012	E1200268-x0	-
-	-	-	-



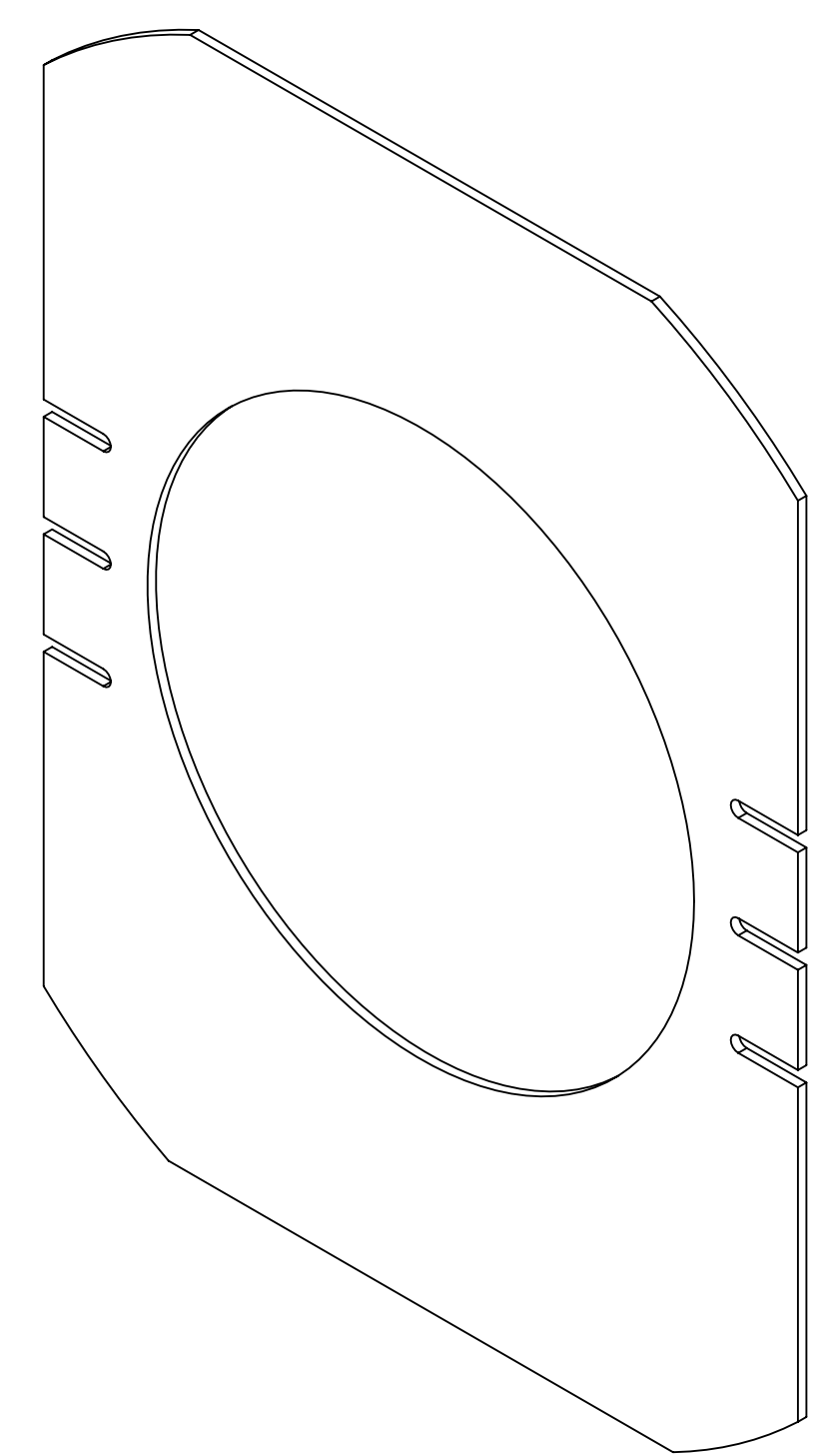
DETAIL B
SCALE 2 : 1
6 PL.



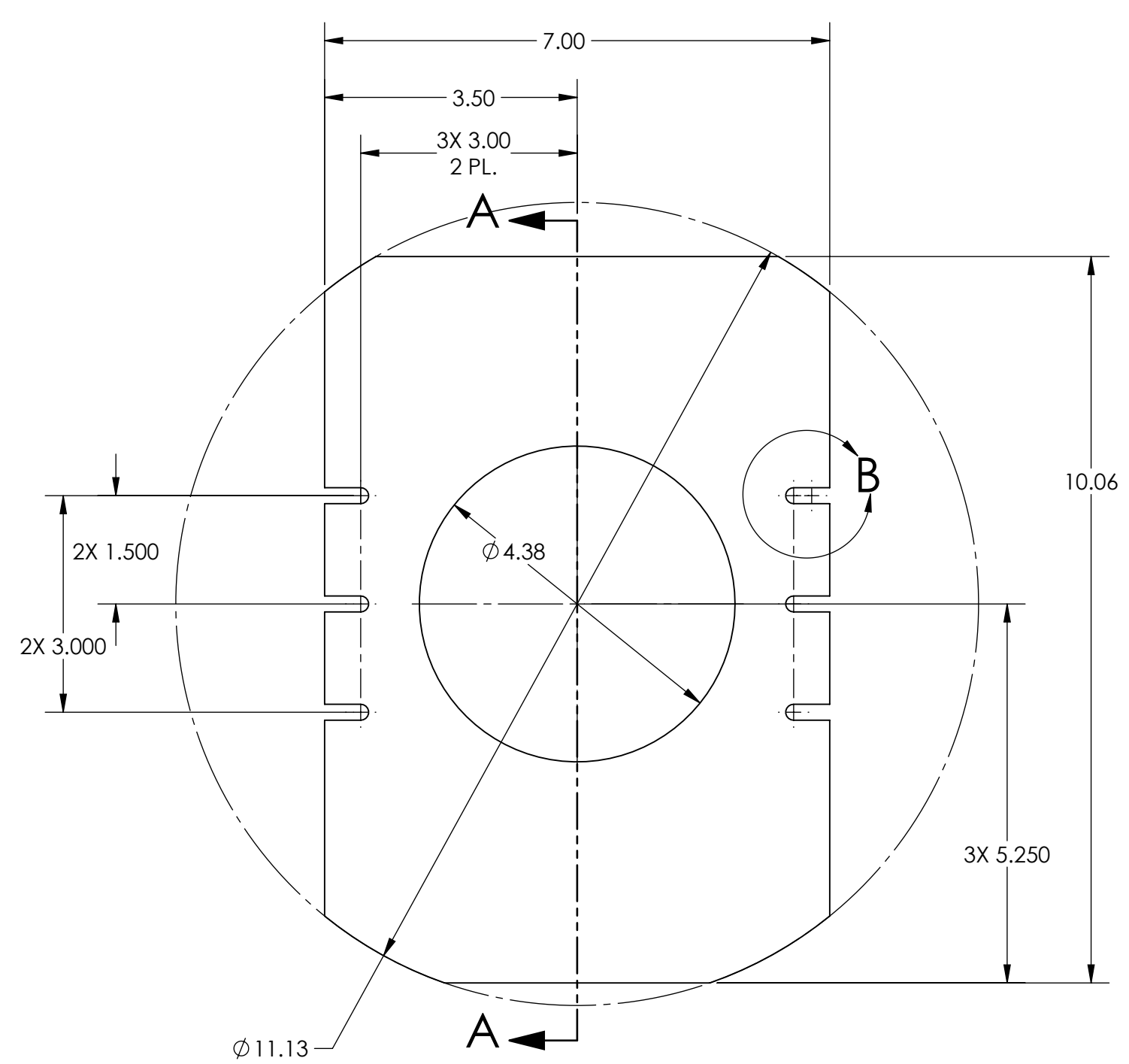
ISO VIEW



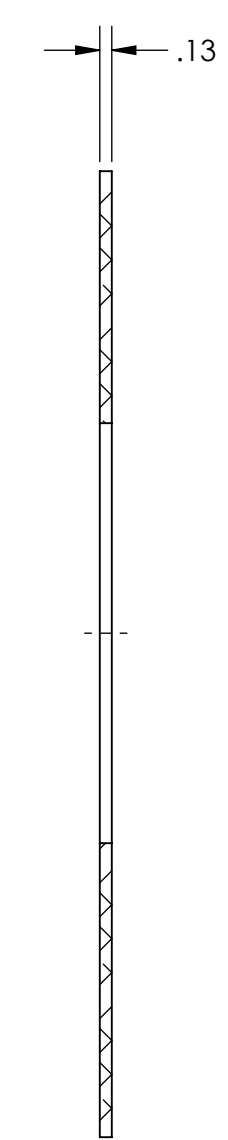
DETAIL D
SCALE 2 : 1
TYP.



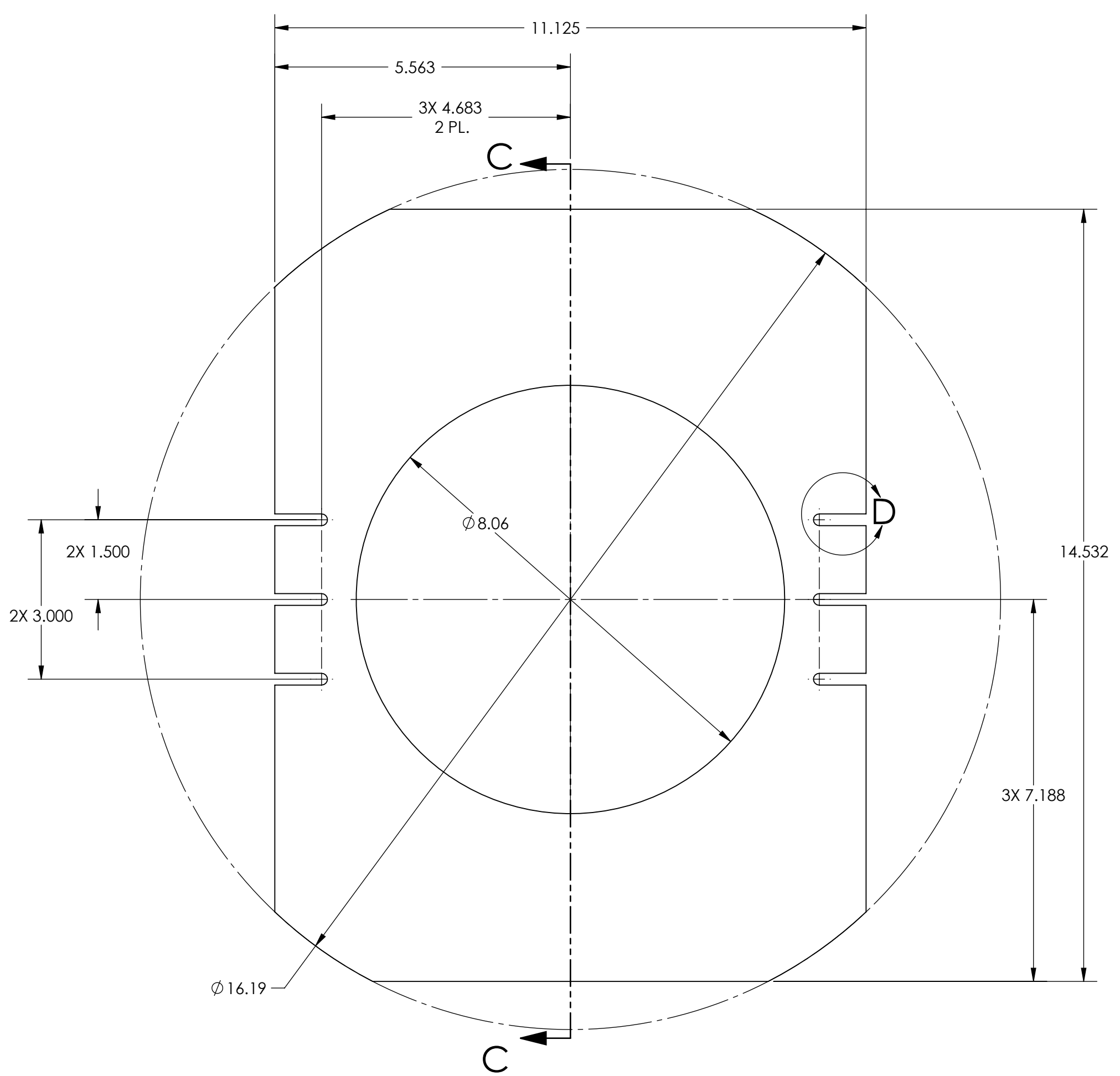
ISO VIEW



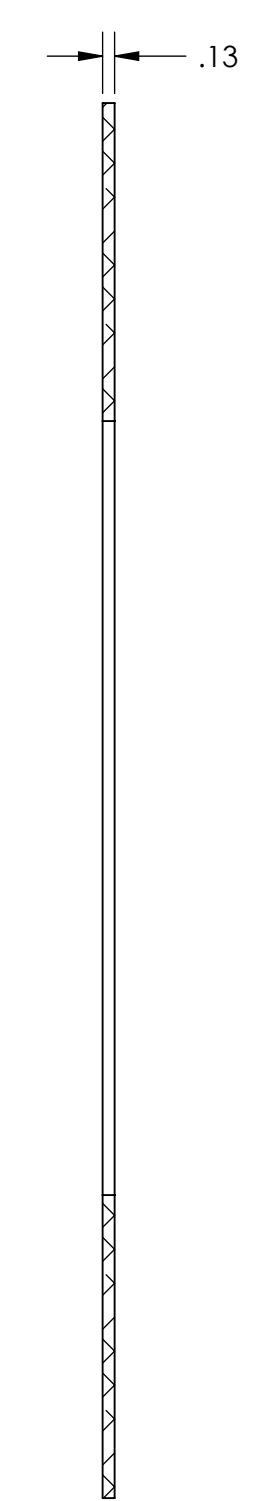
BASIC DETAIL



SECTION A-A



-1 DETAIL



SECTION C-C

DIMENSIONS ARE IN INCHES		TOLERANCES:		ANGULAR ± 1.0°		NOTES AND TOLERANCES: (UNLESS OTHERWISE SPECIFIED)		MATERIAL		FINISH		NEXT ASSY		LIGO CALIFORNIA INSTITUTE OF TECHNOLOGY MASSACHUSETTS INSTITUTE OF TECHNOLOGY		PART NAME	
.XX	± .01	.XXX	± .005			1. INTERPRET DRAWING PER ASME Y14.5-1994.	2. REMOVE ALL SHARP EDGES, .005-.015, FOR MACHINED PARTS. ROUND ALL EDGES APPROXIMATELY R.02 FOR SHEET METAL PARTS.	3. DO NOT SCALE FROM DRAWING.	4. ALL MACHINING FLUIDS MUST BE FULLY SYNTHETIC, FULLY WATER SOLUBLE AND FREE OF SULFUR, SILICONE, AND CHLORINE.	6061-T6	63 μinch	D1100226	D1100226-1	ADVANCED LIGO	OPLEV	ALIGO, AOS, OPLEV PYLON ENCLOSURE ASSY., FRONT PANEL SHUTTER	
DESIGNER	E.SANCHEZ	15 MAY 2011	SIZE	D	DWG. NO.	D1100205		REV.	v2	APPROVAL		SEE DCC	SEE DCC	SCALE:	1:2	PROJECTION:	SHEET 1 OF 1

D1100205-ALIGO, AOS, OPLEV PYLON ENCLOSURE ASSY., FRONT PANEL SHUTTER, PART PDM REV. X-001, DRAWING PDM REV. X-001