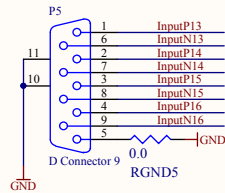
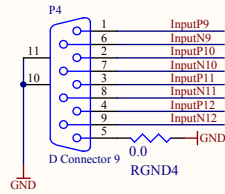
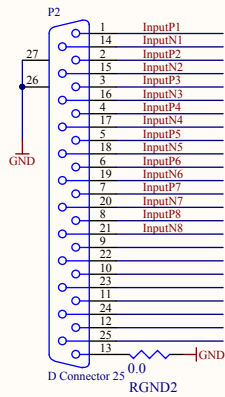
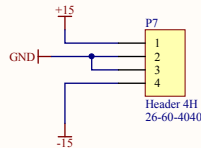
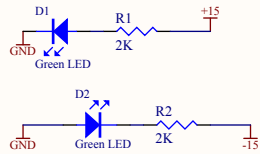
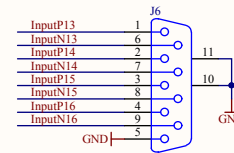
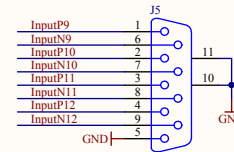
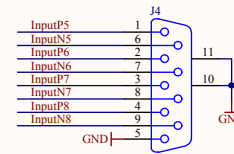
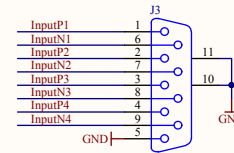


Outputs to Modules



Inputs from Filters



Version v2 changed the gender of all the connector footprints.

Title aLIGO HEPI A1 Chassis Adapter Board		LIGO Project California Institute of Technology Massachusetts Institute of Technology		LIGO Date: 6/26/2014 Time: 12:06:11 PM
Size: B	DCC Number: D1100202	SCH / PCB Revision: v2	Engineer: B.Abbott	
File: C:\restored\Ben\HEPI\New HEPI\alLIGO HEPI A1 Interface\HEPI_A1_Int.Sch.Doc				

