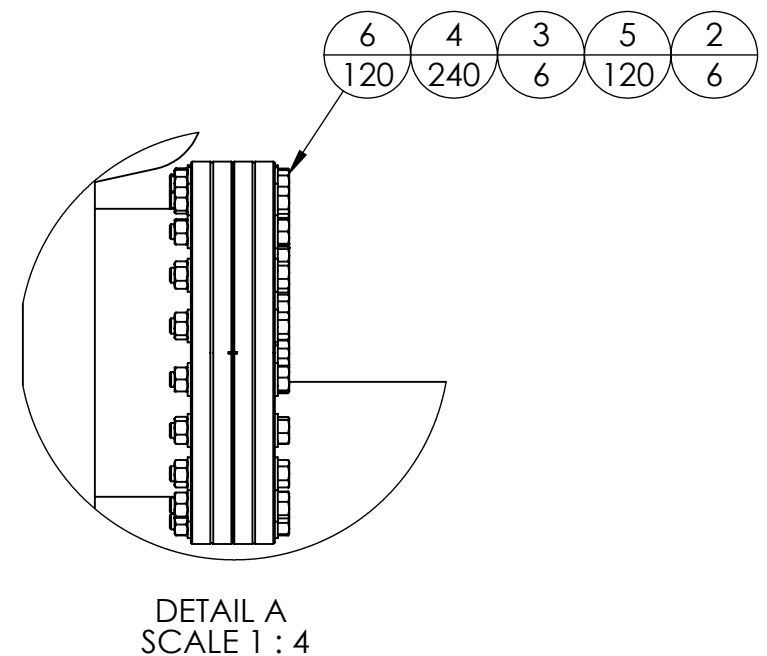
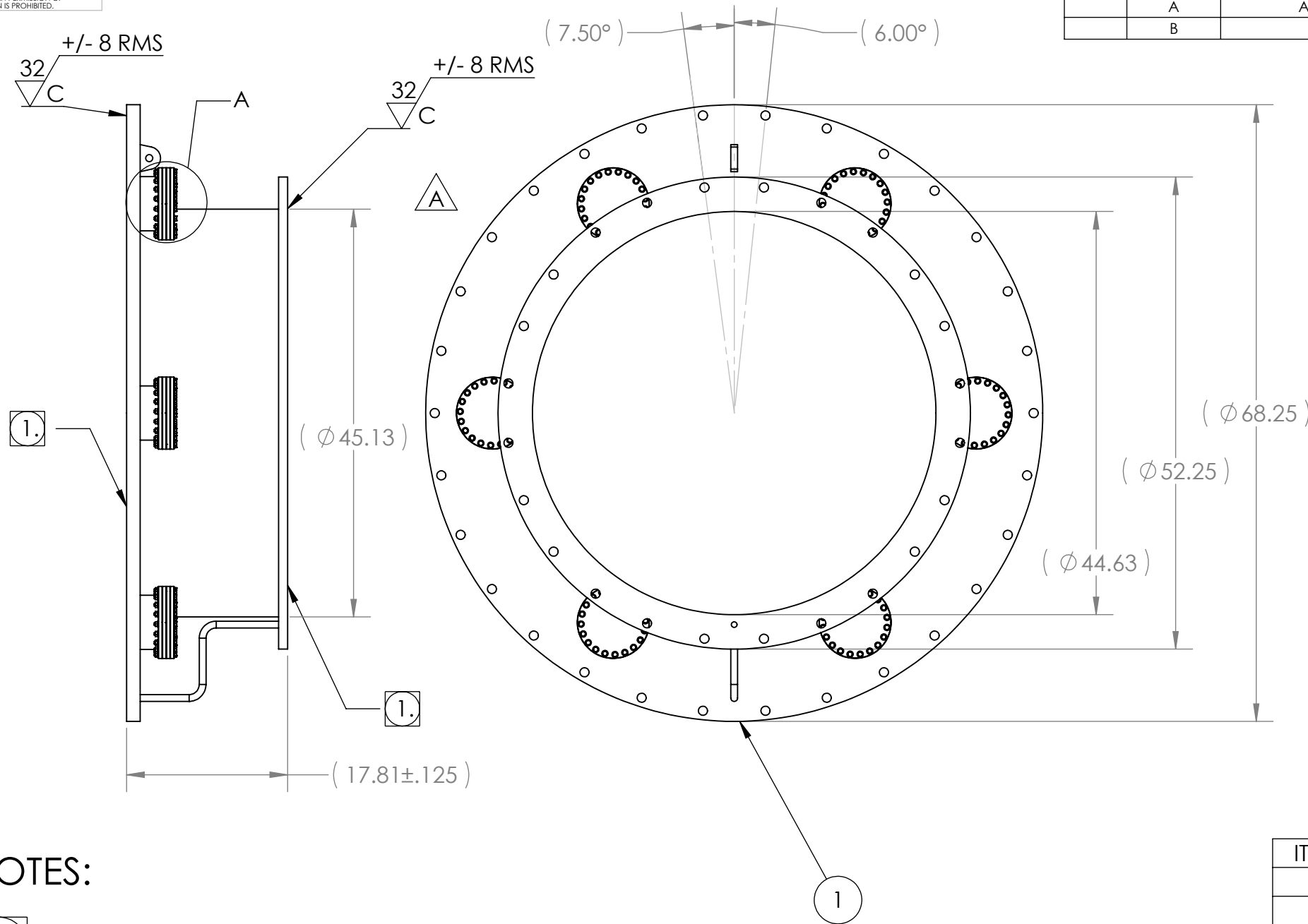


PROPRIETARY AND CONFIDENTIAL
 THE INFORMATION CONTAINED IN THIS
 DRAWING IS THE SOLE PROPERTY OF
 GNB CORPORATION. ANY
 REPRODUCTION IN PART OR AS A WHOLE
 WITHOUT THE WRITTEN PERMISSION OF
 GNB CORPORATION IS PROHIBITED.

REVISIONS				
ZONE	REV.	DESCRIPTION	DATE	APPROVED
	A	ADDED FINISH CALL-OUTS, REFERENCE DIMS	8/19/2010	MKM2
	B	RELEASED TO PRODUCTION	8/23/2010	MKM2



NOTES:

- 1. VACUUM SEALING SURFACE
- 2. CLEAN PER QP1750-D2
- 3. BAKEOUT PER QP1750-A6
- 4. LEAK CHECK PER QP1750-A7
- 5. KEEP FREE OF CONTAMINATION. ANY CONTAMINATION MUST BE REMOVED WITH A CO2 SPRAY IMMEDIATELY.
- 6. VERIFY CLEANLINESS PER PROCEDURE QP1750-A3
- 7. PREPARE FOR SHIPPING PER QP1750-R6
- 8. ALL CONFLAT FLANGES ARE NON-ROTATABLE WITH THRU HOLES.

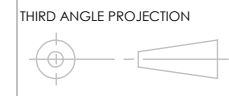
ITEM NO.	PART NUMBER	DESCRIPTION	QTY.
1	114284-00WS	FINAL WELDMENT, ADAPTER A-16	1
2	G-800	(NORCAL) GASKET, COPPER, 8" CF	6
3	800-000N	(NORCAL) BLANK, CF, 8" OD	6
4	F0500000S	WASHER, 5/16 NOM ID, 0.065 THK	240
5	G05F0000M	HEX NUT, 5/16-24	120
6	C05F0360S	HHCS, 5/16-24, 2.25 LG	120

MATERIAL: AISI 304/AISI 304L DUAL CERT PER SA240

UNLESS OTHERWISE SPECIFIED:
 DIMENSIONS ARE IN INCHES
 TOLERANCES:
 ANGULAR: $\pm 0^\circ30'$
 .XX $\pm .03$
 .XXX $\pm .005$
 UNSPECIFIED FILLETS: R.015
 BREAK EDGES .010x45°
 REMOVE ALL BURRS
 //, □, ⊥ WITHIN .03

WEIGHT: 1276.64#	APPROVALS	DATE
	DRAFTER MKM2	7/26/10
	CHECKER ER	8/17/10
	ENGINEER MKM2	7/26/10

GNB CORPORATION
 SCIENTIFIC AND INDUSTRIAL EQUIPMENT
 3200 DWIGHT RD. SUITE 100
 ELK GROVE, CA, 95758
 916-395-3003 FAX: 916-395-3363
 www.gnbvalves.com



TITLE: FINAL ASSEMBLY, A-16		DWG. NO. 114434-00S	REV B
DO NOT SCALE DRAWING	SCALE: 1:15	SHEET 1 OF 1	