

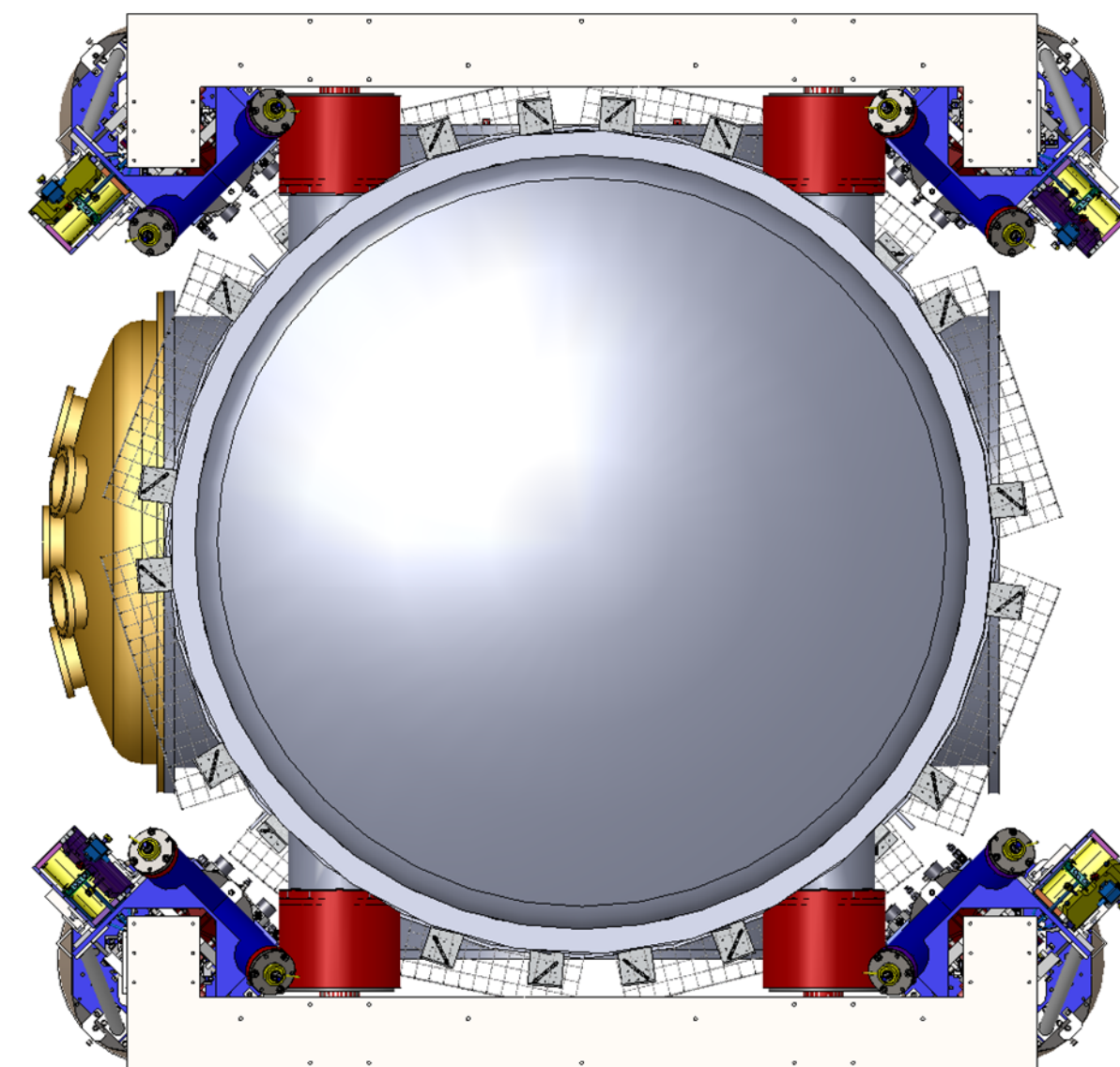
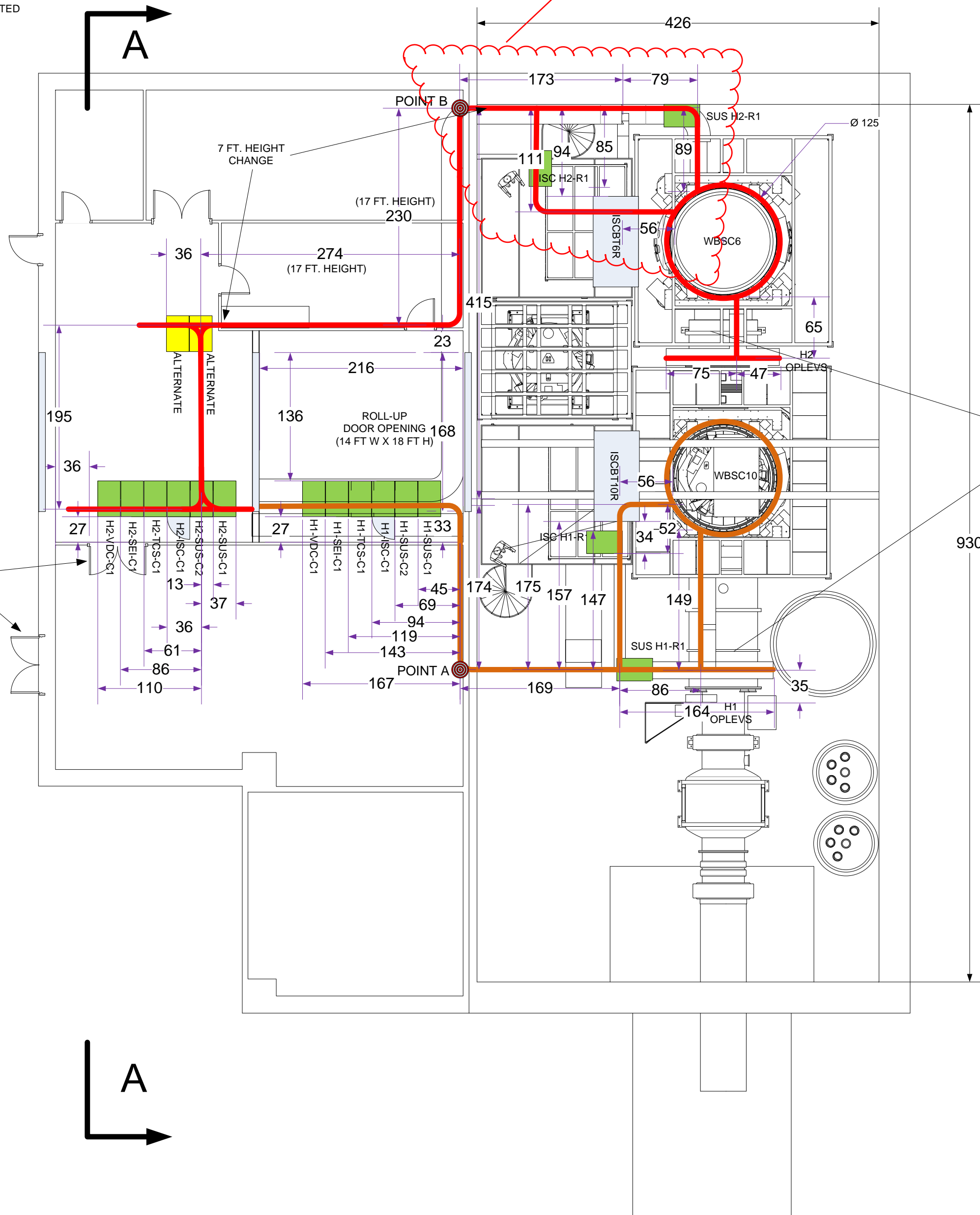
- NOTES:  
 1) ALL DIMENSIONS ARE IN INCHES  
 2) SOME BSC TRAYS INTERFERE WITH SPOOL REMOVAL; MUST BE DIS-ASSEMBLED  
 3) TRAY FOR ION PUMP HIGH VOLTAGE CABLES IS NOT SHOWN YET  
 4) CABLES FOR VACUUM CONTROL AND MONITORING SYSTEM (VCMS) RACKS TO BE RUN WITH SIGNAL CABLES IN SAME TRAYS  
 5) CABLE TRAY SUPPORTS ARE NOT SHOWN YET  
 6) CAPACITIVE POSITION SENSOR SATELLITE RACKS ARE NOT SHOWN YET (MUST BE WITHIN 1 METER OF FLANGE) – ON BSC CROSS-BEAM?  
 7) TRAY CIRCLING THE BSC CHAMBERS IS SEGMENTED OPEN WIRE TYPE WITH CUSTOM ATTACHMENT HARDWARE TO CLAMP TO THE BSC STIFFENING RING JUST BELOW THE FEEDTHROUGH PORTS (SEE D1100430)  
 8) ALL TRAY TO BE LADDER OR RAIL TYPE (EXCEPT CIRCLING THE BSC CHAMBERS) – SEE SHEET 2 FOR CABLE TRAY SIZE INFORMATION  
 9) CABLES OR CONDUITS FOR DC POWER DISTRIBUTION TO BE RUN WITH SIGNAL CABLES IN SAME TRAYS  
 10) RACKS ARE 38" DEEP X 24" WIDE X 72" HIGH  
 11) TRAYS ARE 10 FT. HIGH UNLESS OTHERWISE NOTED

Moved tray to next to vestibule to avoid clean room legs etc.

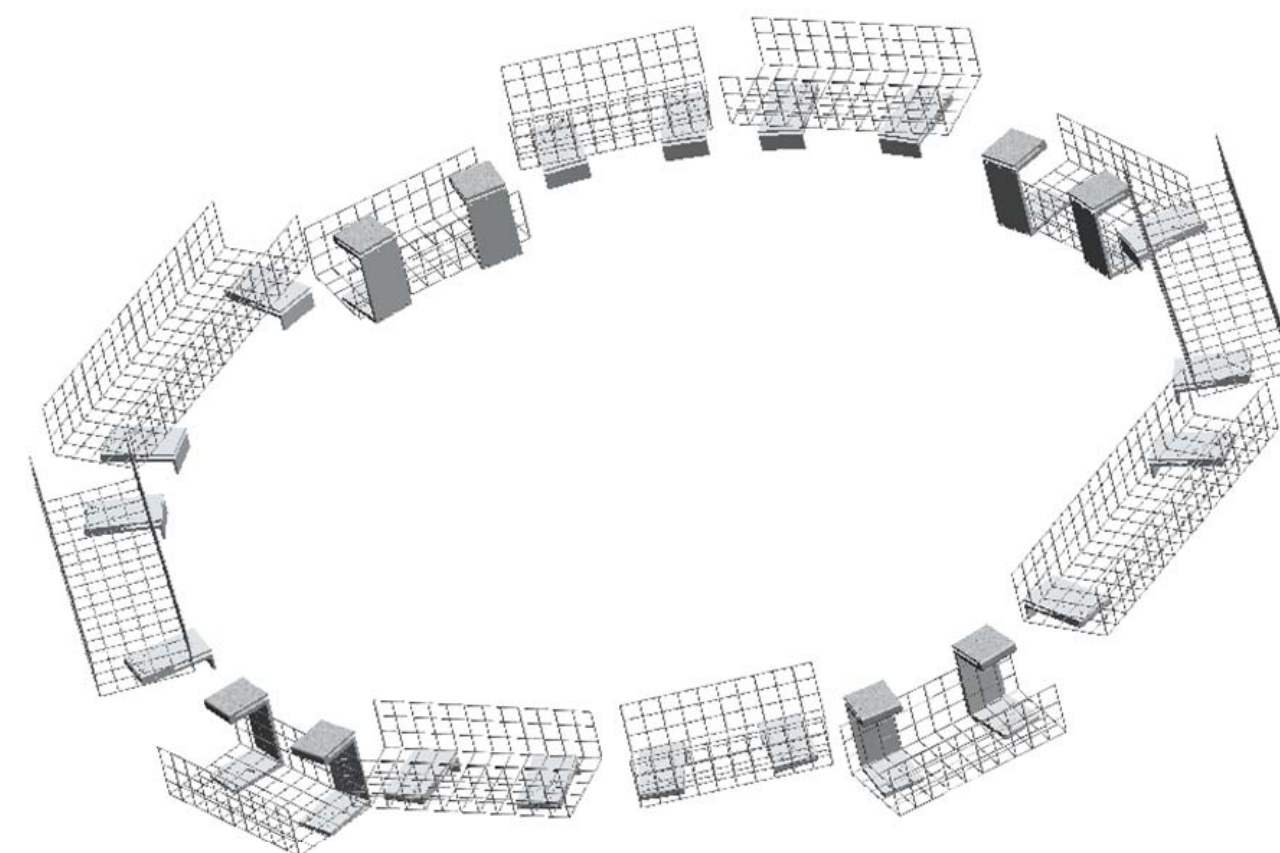
NOTE: LOCATION AND SIZES OF ARCHITECTURAL DETAILS (DOORS, WALLS, AISLES, ETC.) ARE APPROXIMATE

RACK LAYOUT PRESUMES THAT DOUBLE DOOR CAN BE ADDED TO EXTERIOR AND INTERIOR DOUBLE DOOR IS BLOCKED UP

— H2 CABLE TRAY  
 — H1 CABLE TRAY

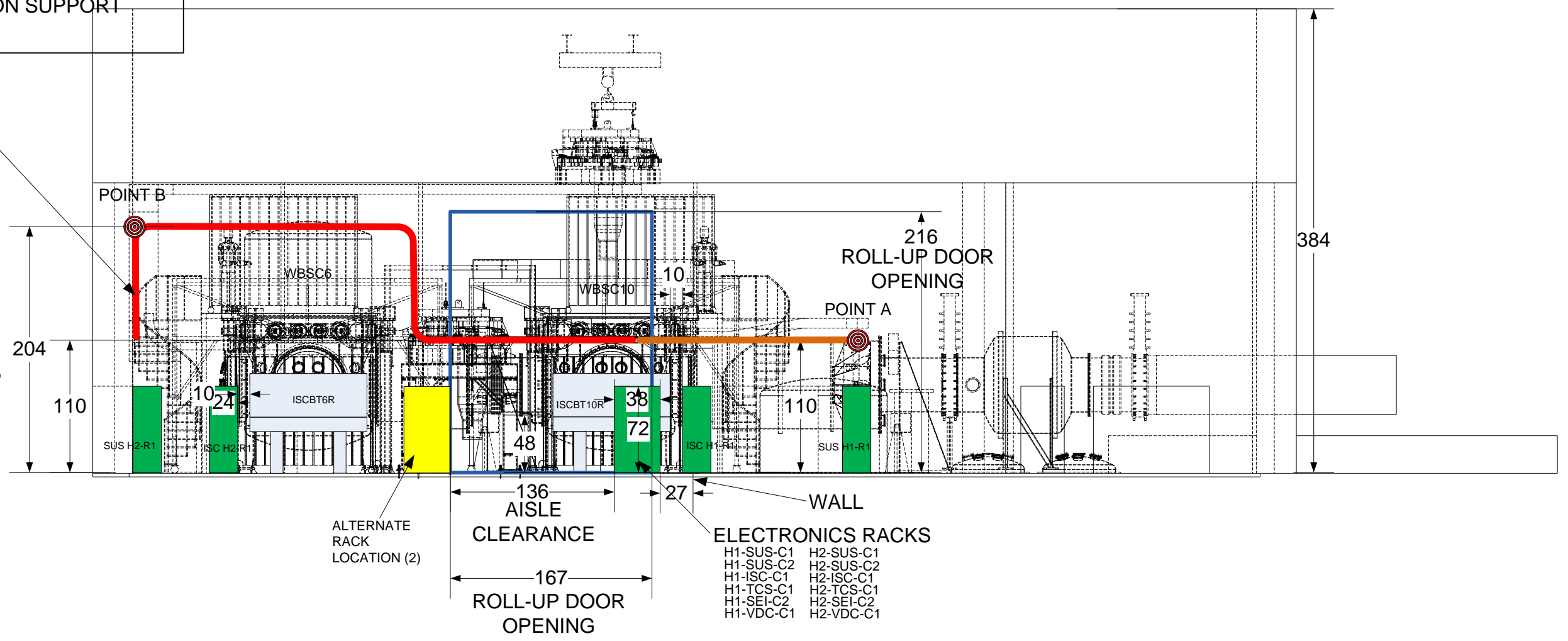


SEE D1100430 FOR SEGMENTED WIRE TRAY (AND MOUNTING HARDWARE) WHICH ENCIRCLES THE BSC CHAMBERS



CALIFORNIA INSTITUTE OF TECHNOLOGY MASSACHUSETTS INSTITUTE OF TECHNOLOGY			NAME <b>RACK &amp; CABLE TRAY LAYOUT,          Y-End, H1 &amp; H2 – Plan View</b>		
DESIGNER	D. COYNE	2011-04-20	SIZE	DWG. NO.	REV
DRAFTER	D. COYNE	2011-04-20	C	D1100024	V3
CHECKER					
FOR APPROVAL SEE THE DCC RECORD			SCALE:	PROJECTION:	SHEET 1 OF 2

POTENTIAL INTERFERENCE WITH SPIRAL STAIRS TO MODULE-E – ALTERNATIVE IS TO MOVE STRAIRS TO OPPOSITE SIDE OF MODULE-E AND MOVE LOCATION OF BSC MECHANICAL TEST STAND FOR WBSC6 INSTALLATION SUPPORT



HEIGHT OF TOP OF VESTIBULE (108"),  
 HEIGHT OF TRAY (110-120", LOWER SURFACE),  
 HEIGHT OF MANIFOLD TUBE TOP (110"),  
 HEIGHT OF BSC STIFFENING RING (108")  
 (WHICH SUPPORTS TRAY AROUND BSC CHAMBER)

# SECTION A-A

 CALIFORNIA INSTITUTE OF TECHNOLOGY MASSACHUSETTS INSTITUTE OF TECHNOLOGY			NAME <b>RACK &amp; CABLE TRAY LAYOUT,                  Y-End, H1 &amp; H2 – Plan View</b>		
DESIGNER	D. COYNE	2011-04-20	SIZE	DWG. NO.	REV
DRAFTER	D. COYNE	2011-04-20	<b>C</b>	<b>D1100024</b>	<b>V2</b>
CHECKER					
FOR APPROVAL SEE THE DCC RECORD			SCALE:	PROJECTION:	SHEET 2 OF 2