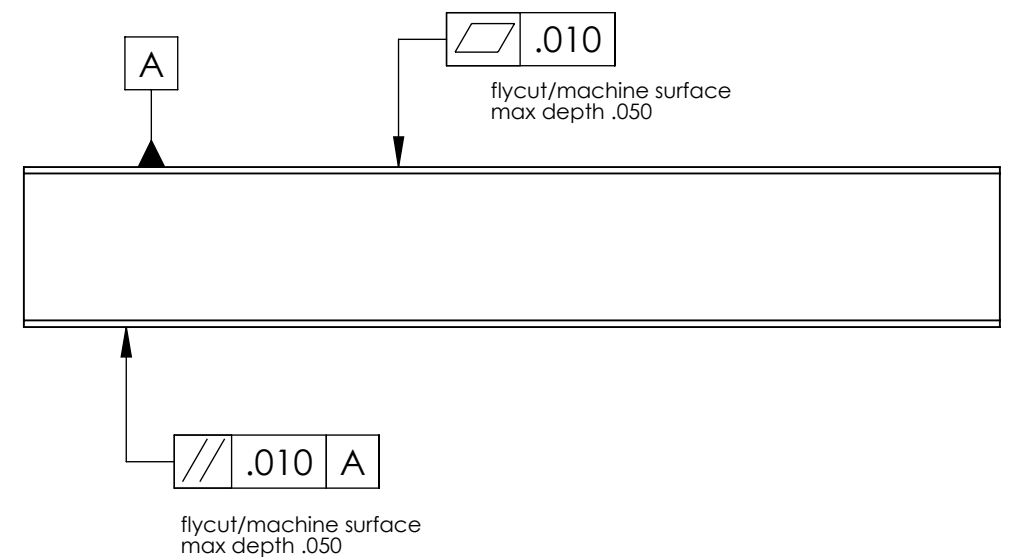
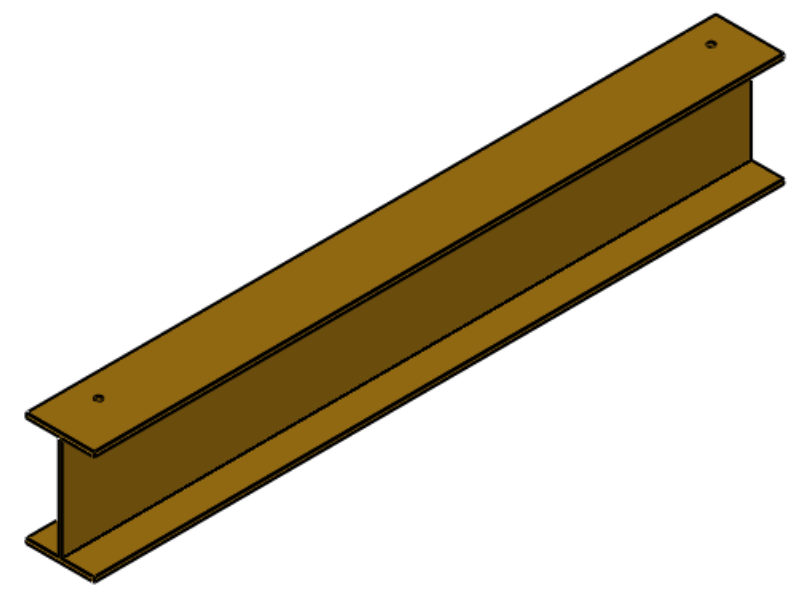
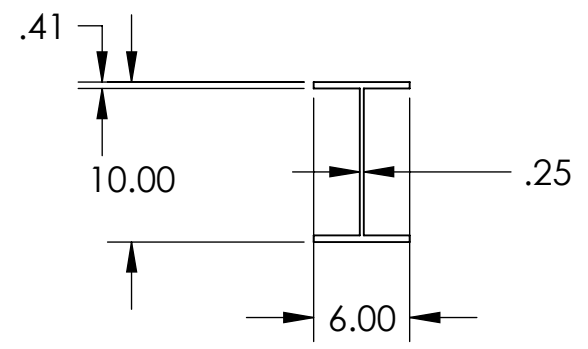
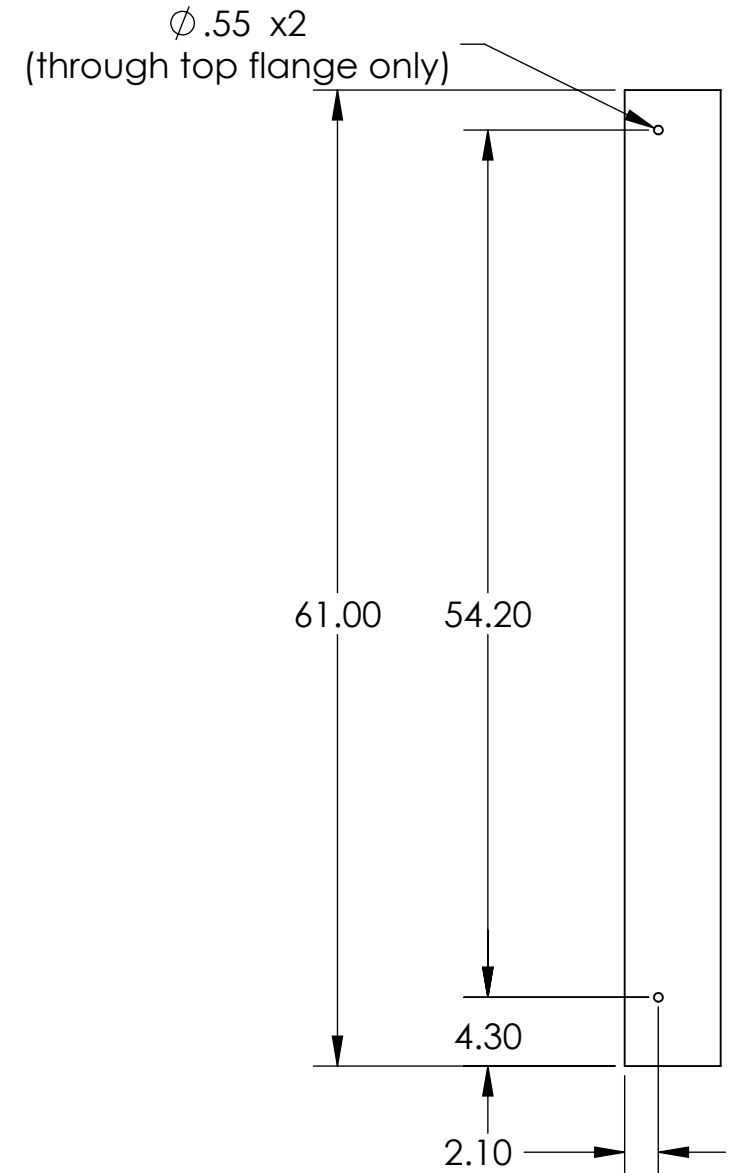
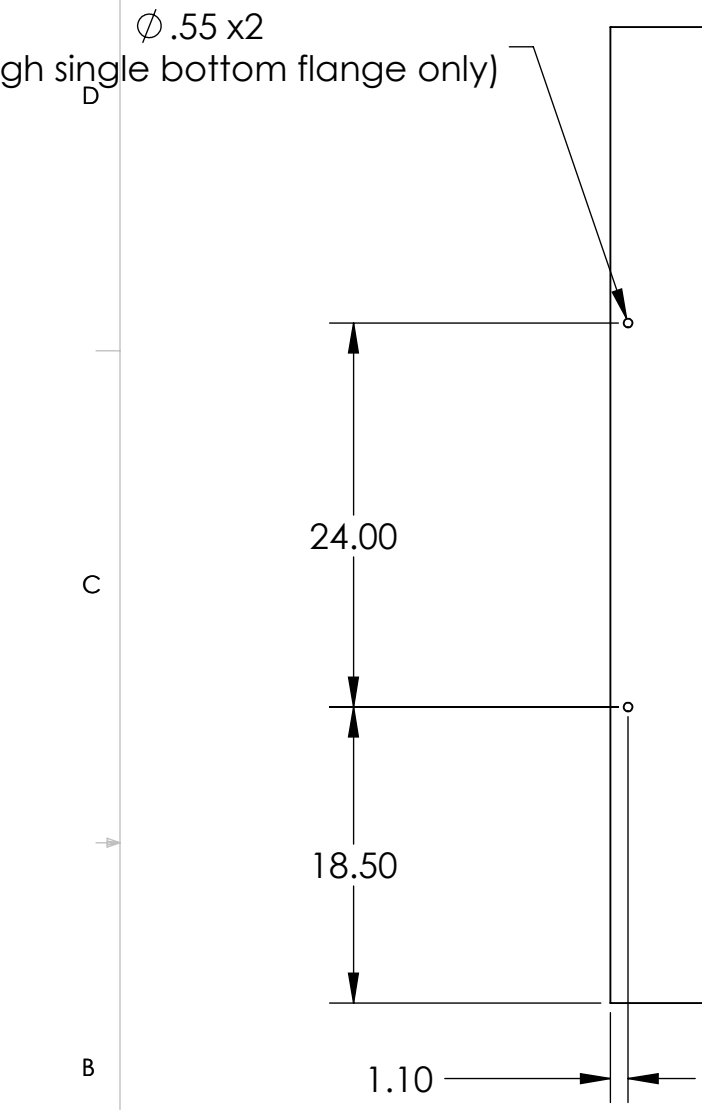


NOTES CONTINUED:  
 4. PURCHASE STANDARD ALUMINUM I BEAM QQA 200/16  
 ASTM B30B AMS 4113 OR EQUIVALENT

| REV. | DATE | DCN # | DRAWING TREE # |
|------|------|-------|----------------|
| -    | -    | -     | -              |
| -    | -    | -     | -              |
| -    | -    | -     | -              |



D1003360- short support i-beam, PART PDM REV: , DRAWING PDM REV:

| NOTES AND TOLERANCES: (UNLESS OTHERWISE SPECIFIED)                     |  |              |  | LIGO CALIFORNIA INSTITUTE OF TECHNOLOGY MASSACHUSETTS INSTITUTE OF TECHNOLOGY  |  | PART NAME                            |  |
|--|--|--------------|--|--|--|--------------------------------------|--|
| DIMENSIONS ARE IN<br>TOLERANCES:<br>.XX ± .05<br>.XXX ±<br>ANGULAR ± ° |  |              |  | 1. INTERPRET DRAWING PER ASME Y14.5-1994.<br>2. REMOVE ALL SHARP EDGES AND BURRS.<br>3. DO NOT SCALE FROM DRAWING.<br>4. ALL MACHINING FLUIDS MUST BE FULLY SYNTHETIC, FULLY WATER SOLUBLE AND FREE OF SULFUR, SILICONE, AND CHLORINE. |  | short support i beam                 |  |
| MATERIAL 6061-T6 Aluminum  |  | FINISH μinch |  | NEXT ASSY D1002682   |  | DESIGNER FOLEY 10/21/2010            |  |
|  |  |              |  |  |  | SIZE DWG. NO. B D1003360             |  |
|  |  |              |  |  |  | REV. v1                              |  |
|  |  |              |  |  |  | SCALE: 1:12 PROJECTION: SHEET 1 OF 1 |  |