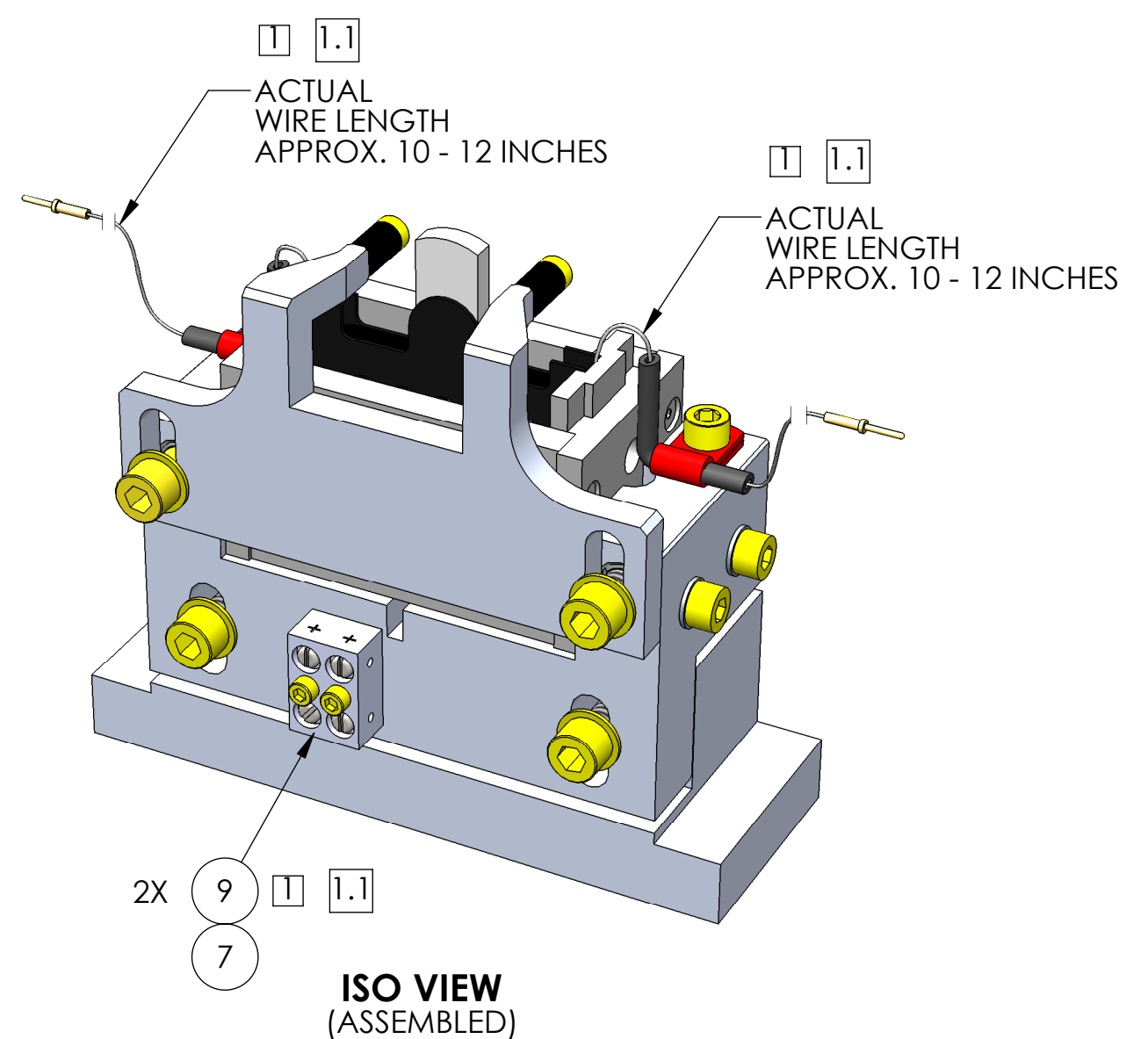
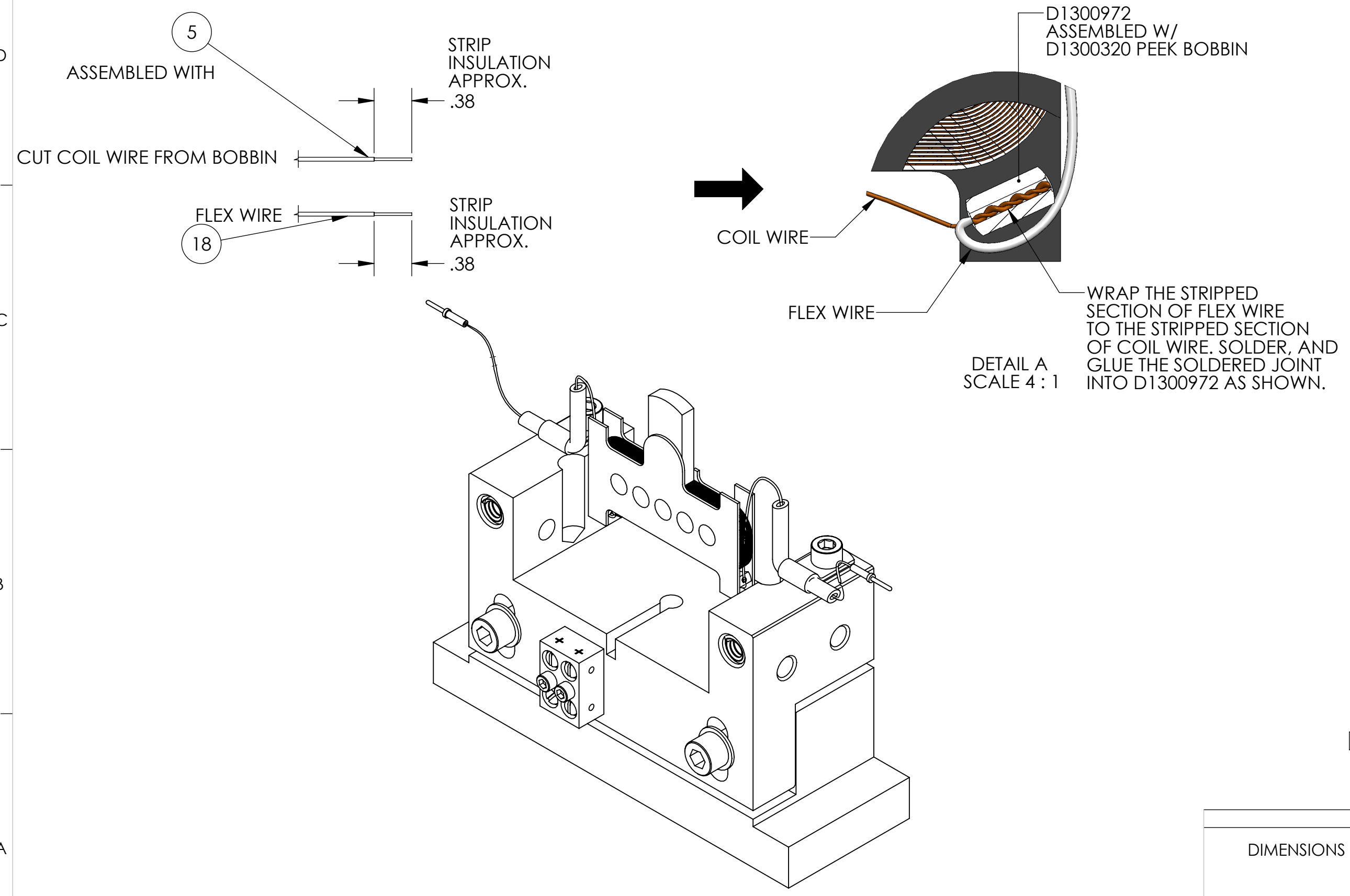
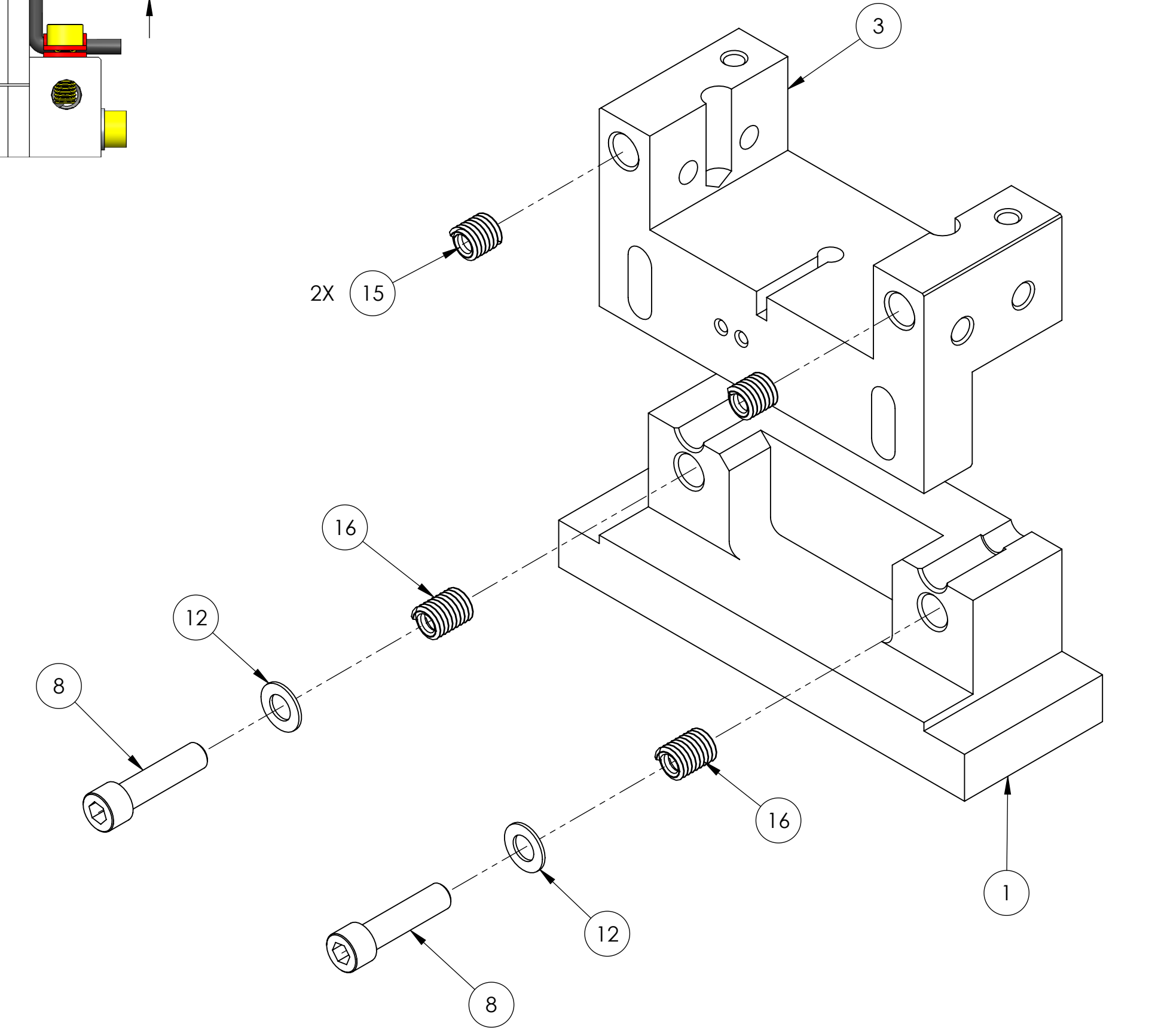
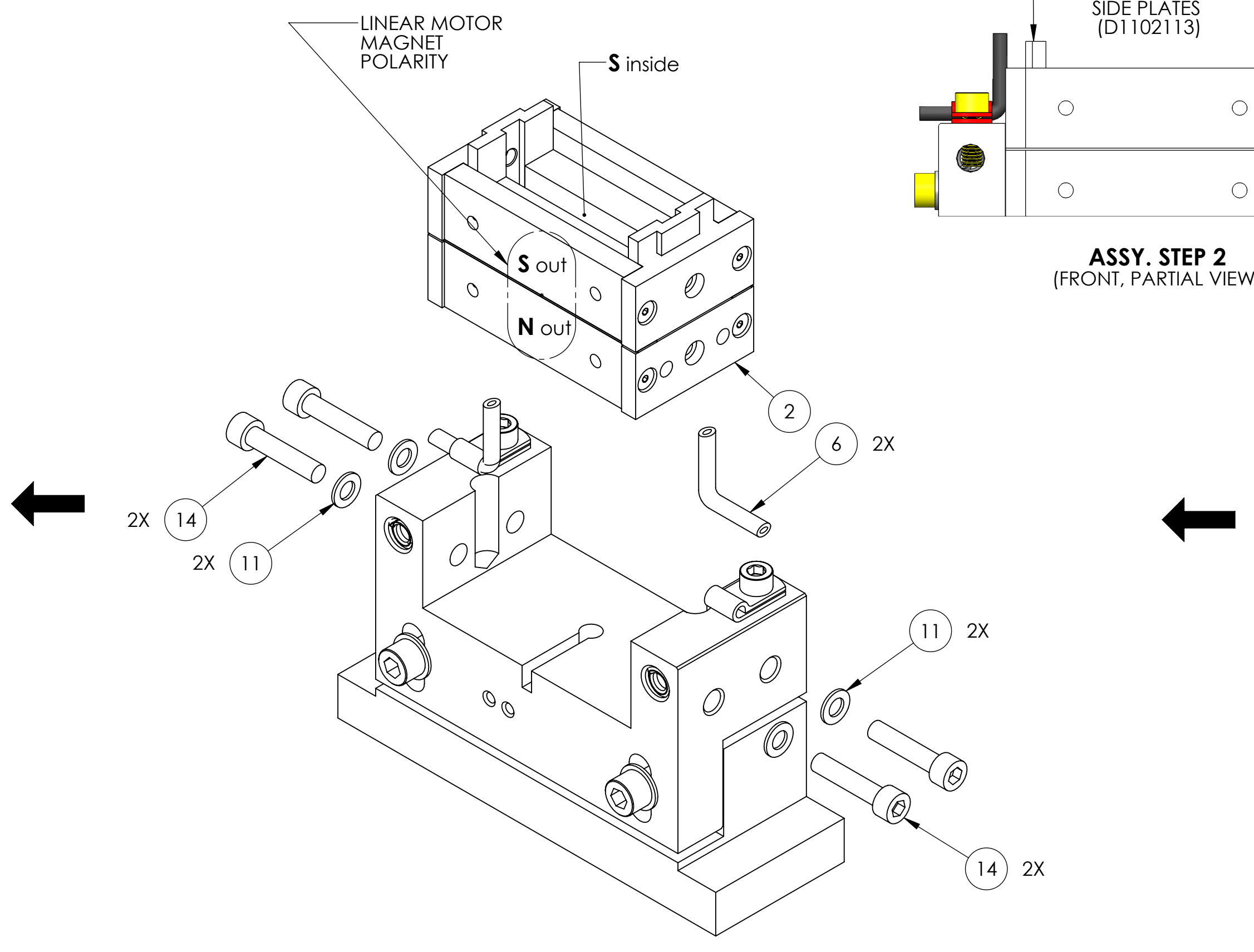
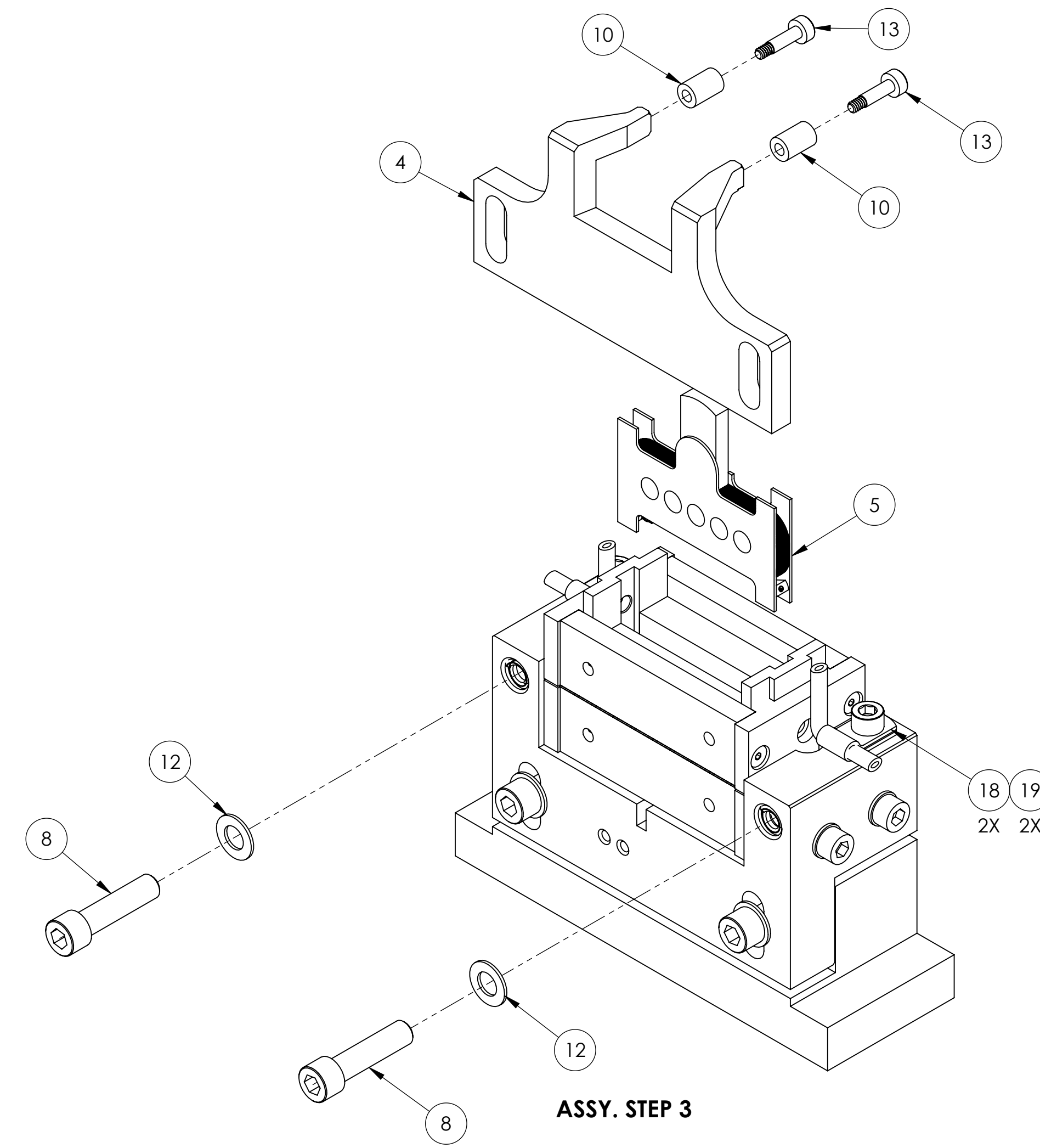


REV.	DATE	DCN #	DRAWING TREE #
v3	03 APR 2014	E1400188-x0	-
-	-	-	-
-	-	-	-



1. TEST FLEX WIRES FOR THE CORRECT POLARITY. INSTALL POSITIVE (+) IN THE TOP TERMINAL BLOCK HOLE, AND THE NEGATIVE (-) IN THE BOTTOM TERMINAL BLOCK HOLE.  
 1.1. TERMINAL BLOCK IDENTIFIED WITH "POSITIVE" (+) AND "NEGATIVE" (-) MARKING FOR CLARITY.

ITEM NO.	PART NUMBER	DESCRIPTION	MATERIAL	QTY.
19	MS16996-10 OR EQ.	SCREW, SHC, 10-32 X .50 LG.	300 SSSL	2
18	5317-12-1 SEASTROM OR EQ.	CLAMP, OPEN LOOP, .13 ID.	304, 316 OR 302 SSSL	2
17	CZ1105 COONER WIRE	MULTICONDUCTOR 28AWG COPPER WIRE, PFA INSULATION	N/A	A/R
16	1185-4EN500 EMHART OR EQ.	HELICOIL, 1/4-20 X .50 LG.	NITRONIC 60	2
15	1185-4EN375 EMHART OR EQ.	HELICOIL, 1/4-20 X .375 LG.	NITRONIC 60	2
14	C-1014-A UC COMPONENTS OR EQ.	SCREW, SHC, #10-32 X .88 LG.	18-8 SSSL	4
13	SHCV-4414 UC COMPONENTS OR EQ.	SCREW, SHC, 4-40 X .38 LG, VENTED (SHOULDER)	300 SSSL	2
12	WFV-25 UC COMPONENTS OR EQ.	Flat Washer Vented .255 ID, .46 OD, .06 THK	18-8 SSSL	4
11	WF-10 UC COMPONENTS OR EQ.	FLAT Washer, 0.195 ID, 0.354 OD, 0.032 THK #10	18-8 SS	4
10	MAKE FROM: 5119K41 McMASTER-CARR OR EQ.	VITON TUBING, .13 ID. X .25 OD	FLUOROELASTOMER	2
9	92200A110 McMASTER-CARR OR EQ.	SHCS #4-40 x 1/2" 300 Series SST	300 SSSL	2
8	HOLOKROME_78062 OR EQ.	SCREW, SHC, 1/4-20 x 1.0 LG.	18-8 SSSL	4
7	111851 ACCU-GLASS OR EQ.	TERMINAL BLOCK, 2POLE (PEEK)	N/A	1
6	D1301024	Tube, Wire Protection, ISC Fast Shutter	VITON	2
5	D1003319	BOBBIN-COIL Assembly	N/A	1
4	D1003325	Fast Shutter Cap	6061-T6 Al	1
3	D1003324	ISC Fast Shutter Bracket aLIGO	6061-T6 Al	1
2	D1102130	aLIGO Linear Motor Assembly	N/A	1
1	D1003326	ISC Fast Shutter Base, aLIGO	6061-T6 Al	1

NOTES AND TOLERANCES: (UNLESS OTHERWISE SPECIFIED)

DIMENSIONS ARE IN INCHES

MATERIAL	N/A	FINISH	N/A μinch
----------	-----	--------	-----------

**LIGO** CALIFORNIA INSTITUTE OF TECHNOLOGY  
 MASSACHUSETTS INSTITUTE OF TECHNOLOGY

SYSTEM: ADVANCED LIGO SUB-SYSTEM: ISC NEXT ASSY: D1000342

PART NAME: **ISC Fast Shutter Assembly, aLIGO**

DESIGNER	SBARNUM	MAY 2013	SIZE	DWG. NO.	REV.
DRAFTER	E.SANCHEZ	03 APR 2014	D	D1003318	v3
CHECKER	SEE DCC	SEE DCC	SCALE: 1:1	PROJECTION:	SHEET 1 OF 1
APPROVAL	SEE DCC	SEE DCC			

D1003318 ISC Fast Shutter Assembly aLIGO PART PDM REV: X014 DRAWING PDM REV: X006