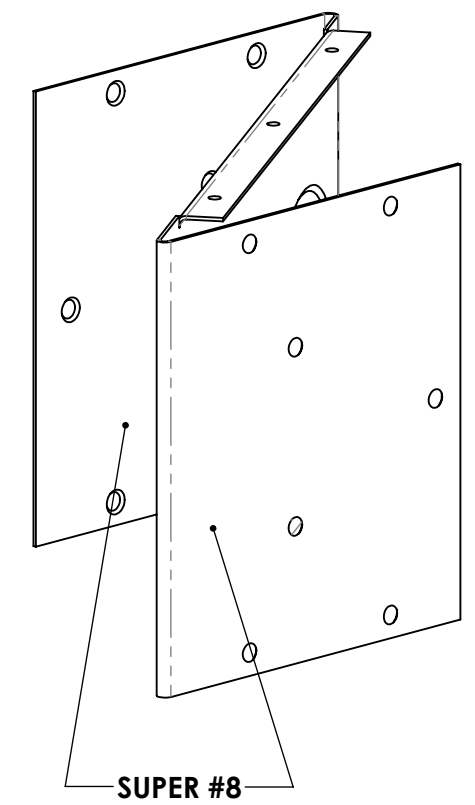
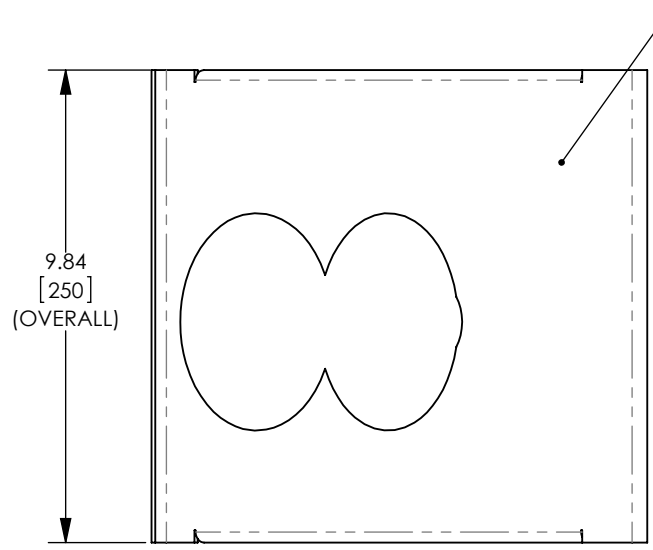
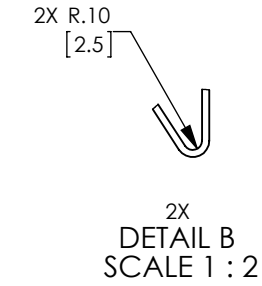
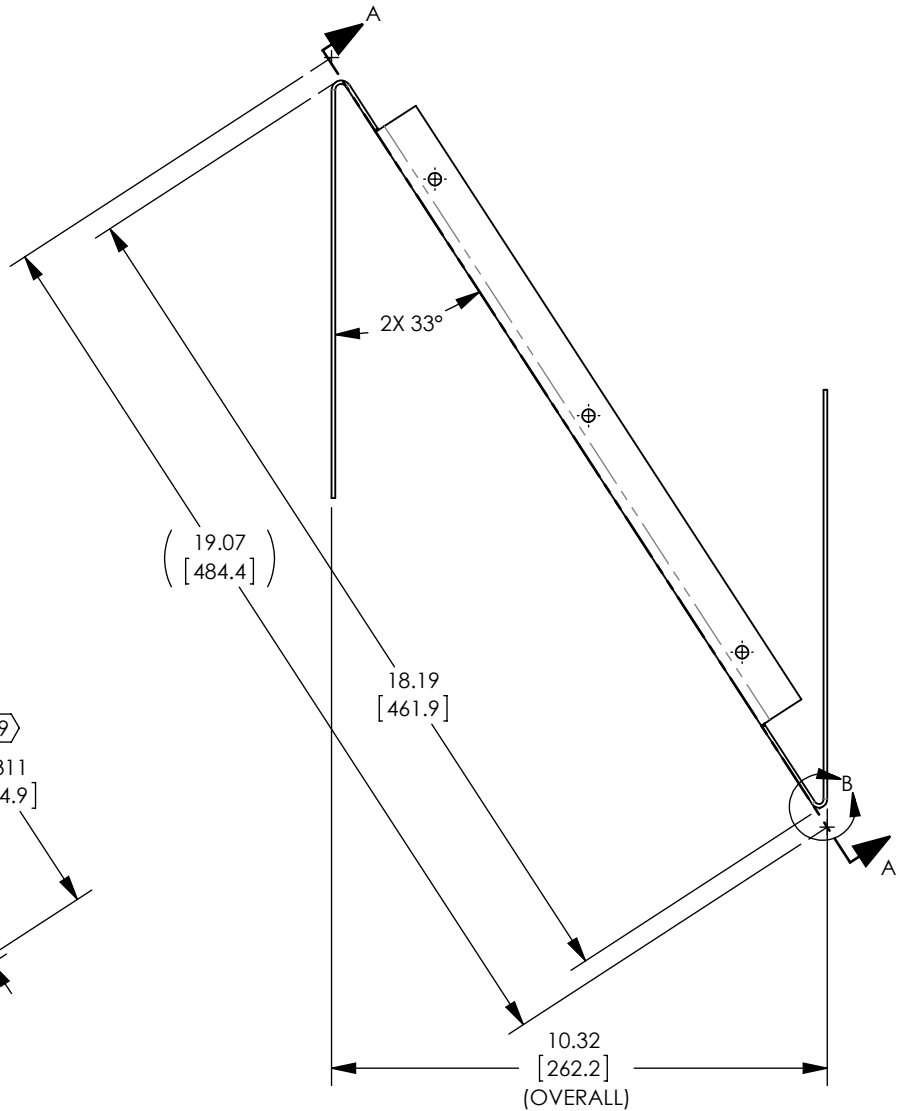
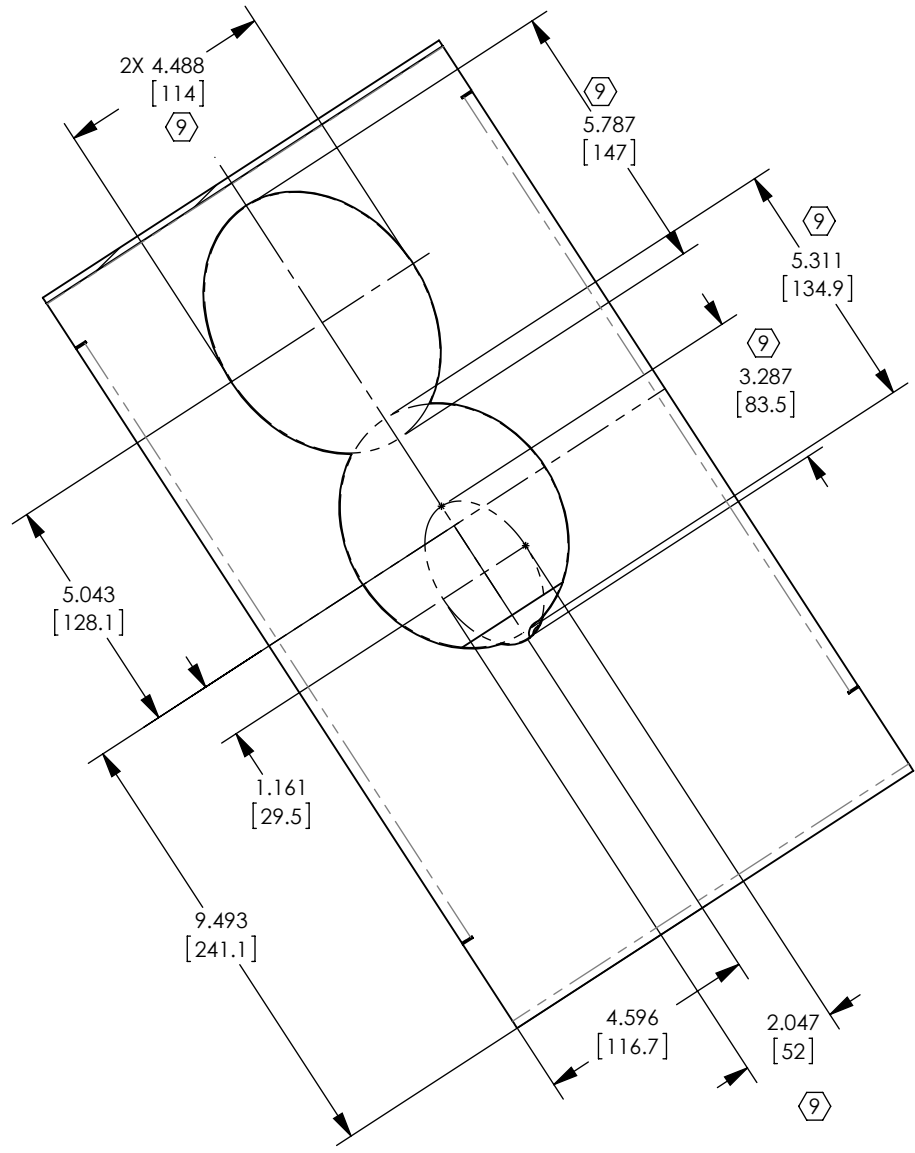


NOTES CONTINUED:

- ⑤ SCRIBE, ENGRAVE (A VIBRATORY TOOL MAY BE USED), LASER MARK (NO INKS OR DYES) DRAWING PART NUMBER, REVISION (AND VARIANT OR "TYPE" IF APPLICABLE) ON NOTED SURFACE OF PART FOLLOWED ON THE NEXT LINE WITH A THREE DIGIT SERIAL NUMBER. SERIAL NUMBERS START AT 001 FOR THE FIRST ARTICLE AND PROCEED CONSECUTIVELY. USE MINIMUM 0.12" HIGH CHARACTERS, UNLESS THE SIZE OF THE PART DICTATES SMALLER CHARACTERS. EXAMPLE: DXXXXXX-VY, TYPE-XX, S/N XXX (DO NOT APPLY MARK ON SUPER #8 SIDE)
- 6. ALL PARTS SHALL BE MANUFACTURED IN ACCORDANCE WITH LIGO SPEC E0900364 AND E1100842.
- 7. ALL MATERIAL IS TO BE VIRGIN MATERIAL (I.E. NO WELD REPAIRS OR PLUGS) UNLESS APPROVED IN ADVANCE, IN WRITING, BY LIGO PER SPECIFICATION E0900364.
- ⑥ SURFACE FINISH TO BE AS-PROCESSED FROM MILL/SUPPLIER, FREE FROM SCRATCHES & GOUGES. DO NOT REMOVE PROTECTIVE PLASTIC COATING FROM MIRRORED SIDE.
- ⑦ SEE CAD FILE #D1003301.SLDPRT TO GENERATE ELLIPSE CURVES.
- 10. PART WILL BE OXIDIZED PER LIGO SPECIFICATION E1100842 AFTER FABRICATION.
- 11. BEND RADIUS: UNLESS OTHERWISE NOTED, THE BEND RADIUS SHOULD BE THE MINIMUM REQUIRED TO FORM WITHOUT CRACKING OR REQUIRING ADDITIONAL WORK WHEN FORMING.
- 12. APPROXIMATE PART WEIGHT: 7.28 LB

REV.	DATE	DCN #	DRAWING TREE #
v2	18 DEC 2010	E1000865	-
v3	13 SEP 2012	E1000865	-
-	-	-	-



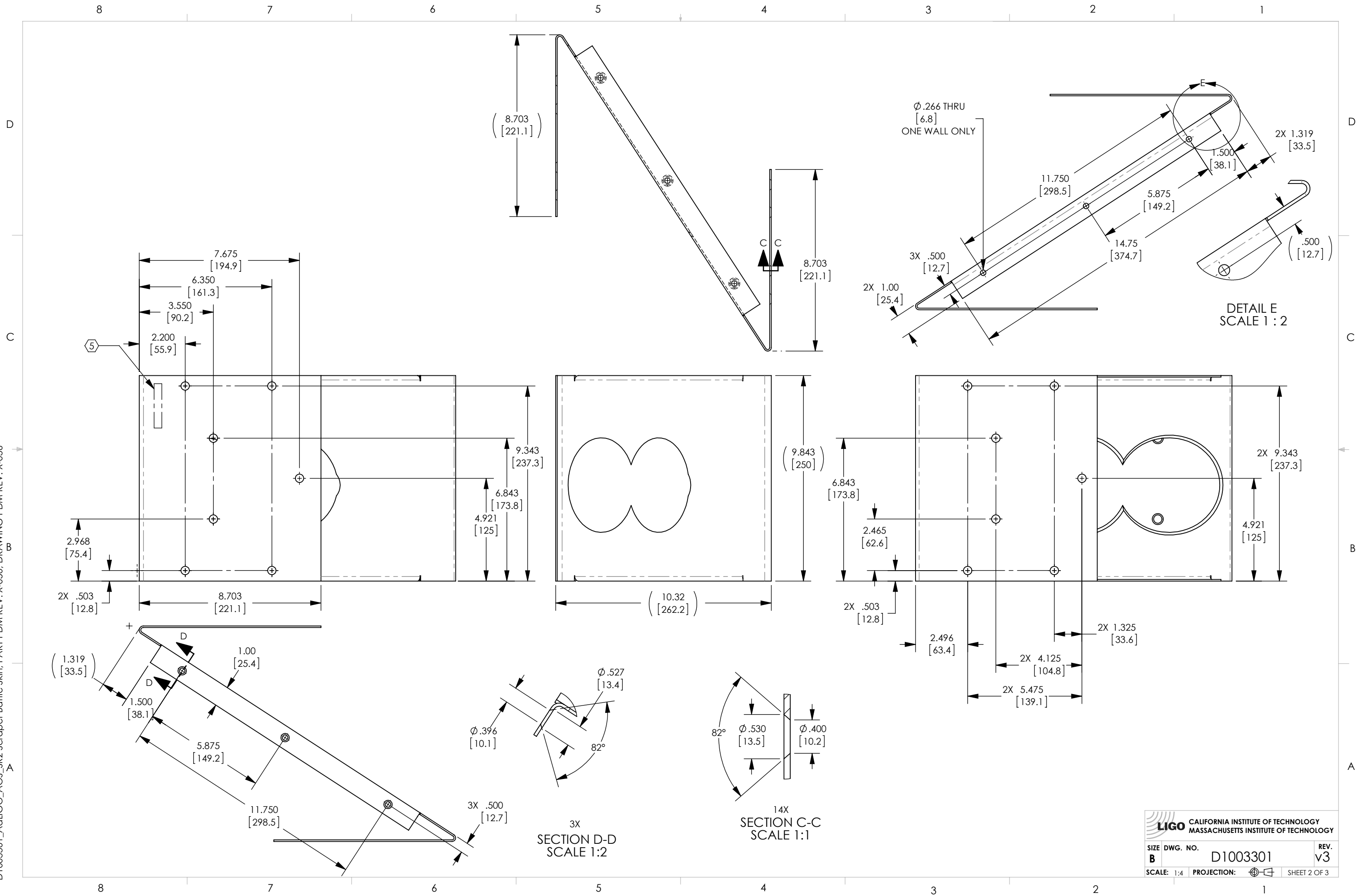
D1003301_AdlIGO_AOS_SR2 Scraper Baffle Skin, PART PDM REV: X-050, DRAWING PDM REV: X-036

NOTES AND TOLERANCES: (UNLESS OTHERWISE SPECIFIED)	
DIMENSIONS ARE IN INCHES	
TOLERANCES: .XX ± .03 .XXX ± .005	
ANGULAR ± 1.0°	
MATERIAL	FINISH
14 GA, 304 SSSL	SUPER #8

CALIFORNIA INSTITUTE OF TECHNOLOGY MASSACHUSETTS INSTITUTE OF TECHNOLOGY		PART NAME	
SYSTEM ADVANCED LIGO		SUB-SYSTEM AOS	
NEXT ASSY		D1003300	

DESIGNER		M.RUIZ	06 DEC 2010	SIZE		DWG. NO.	REV.
DRAFTER		M.RUIZ	16 NOV 2011	B		D1003301	v3
CHECKER		M. SMITH	17 MAY 2012	SCALE:		1:4	PROJECTION:
APPROVAL		M. SMITH	17 MAY 2012	SHEET		1 OF 3	

D1003301_AcLIGO_AOS_SR2 Scraper Baffle Skin, PART PDM REV: X-050, DRAWING PDM REV: X-036

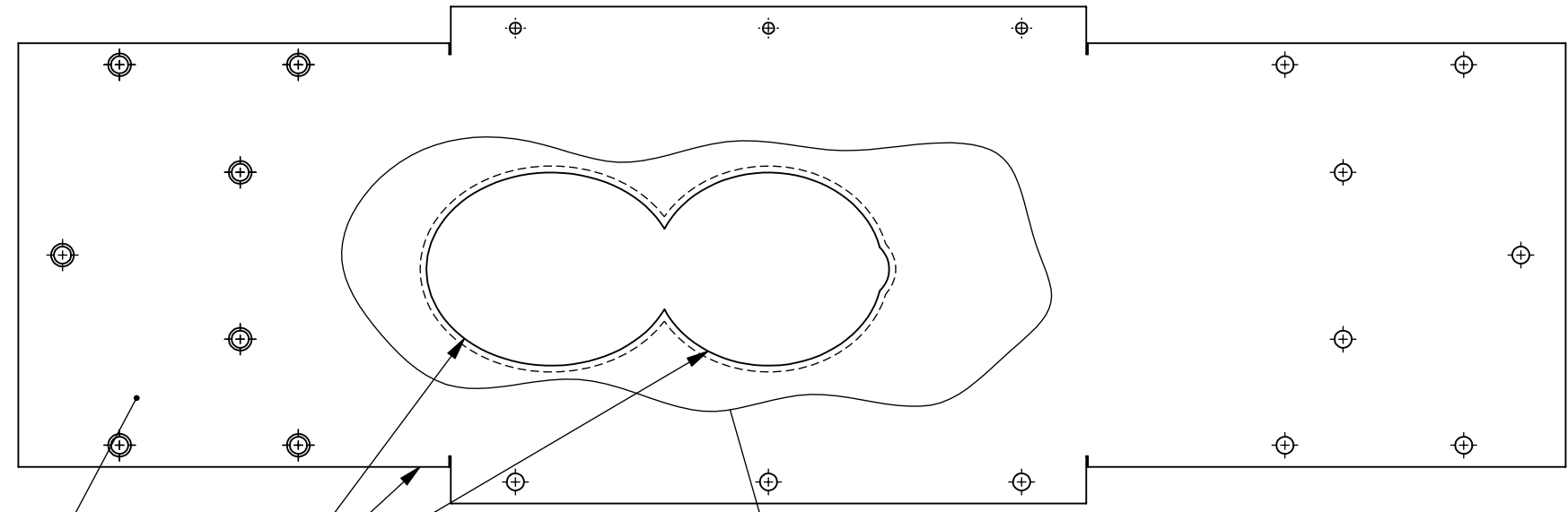


LIGO CALIFORNIA INSTITUTE OF TECHNOLOGY MASSACHUSETTS INSTITUTE OF TECHNOLOGY	
SIZE DWG. NO. B	REV. v3
D1003301	
SCALE: 1:4	PROJECTION: SHEET 2 OF 3

D1003301_AcLIGO_AOS_SR2 Scraper Baffle Skin, PART PDM REV: X-050, DRAWING PDM REV: X-036

8 7 6 5 4 3 2 1

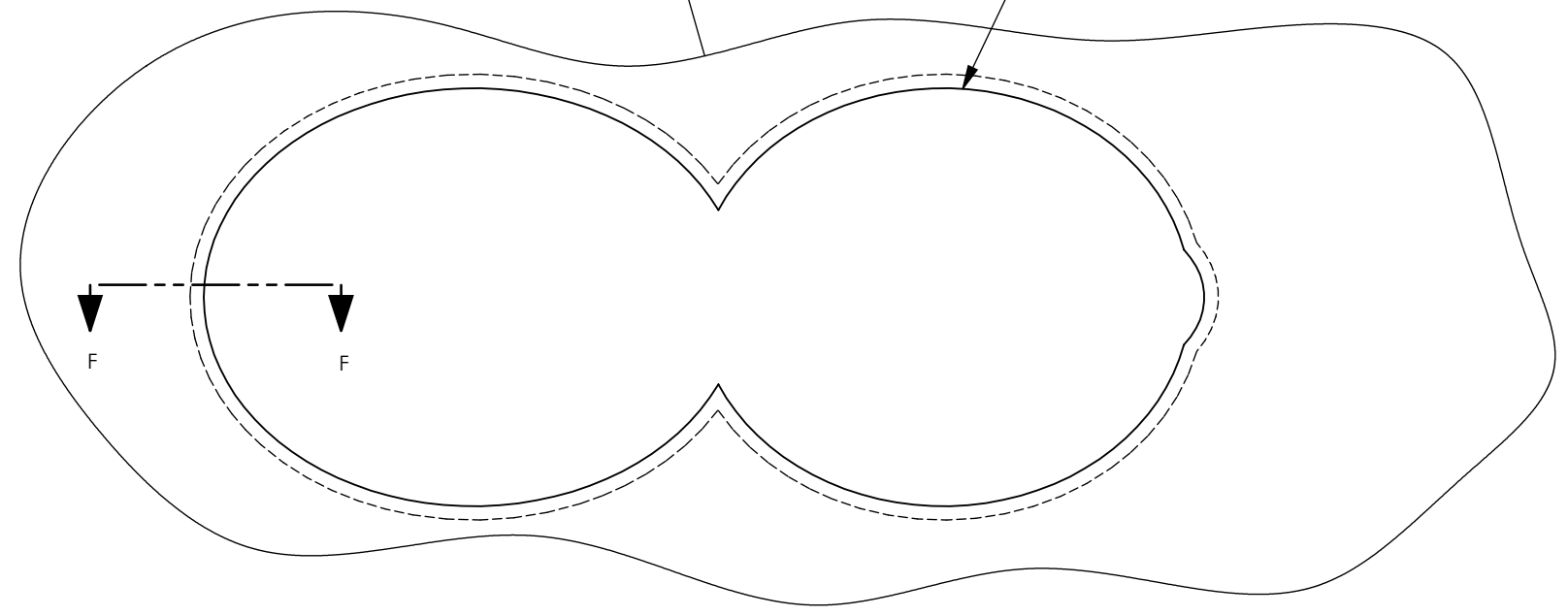
D
C
B
A



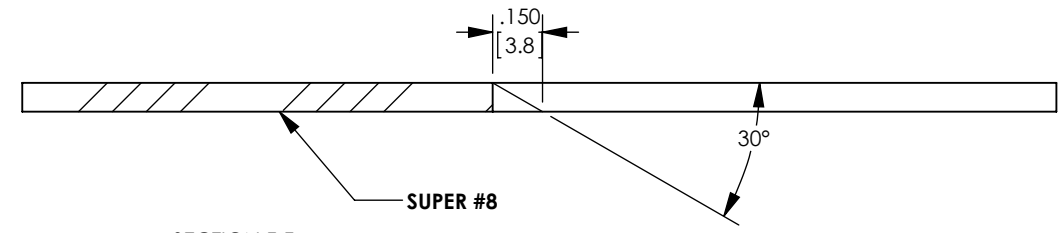
SUPER #8

BREAK EDGES .005" MAX
FREE OF BURRS

APERTURE



DETAIL F
SCALE 1 : 2



SECTION F-F
SCALE 2 : 1

SUPER #8

30°

.150
[3.8]

LIGO CALIFORNIA INSTITUTE OF TECHNOLOGY
MASSACHUSETTS INSTITUTE OF TECHNOLOGY

SIZE	DWG. NO.	REV.
B	D1003301	v3
SCALE: 1:4	PROJECTION:	SHEET 3 OF 3

8 7 6 5 4 3 2 1