

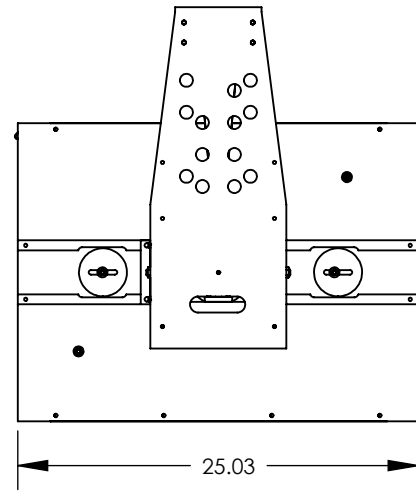
D1003238_AdLIGO_AOS_ITM Elliptical Baffle Final Assy, PART PDM REV: X-068, DRAWING PDM REV: X-042

NOTES CONTINUED:

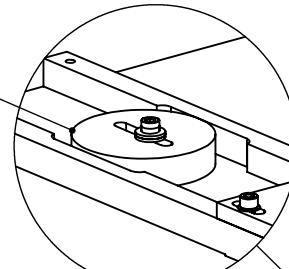
REV.	DATE	DCN #	BOM #
v1	10 DEC 2010	E1000736	E1000751
v2	07 OCT 2011	E1101007	E1101039
v3	10 MAY 2012	-	-

D
C
B
A

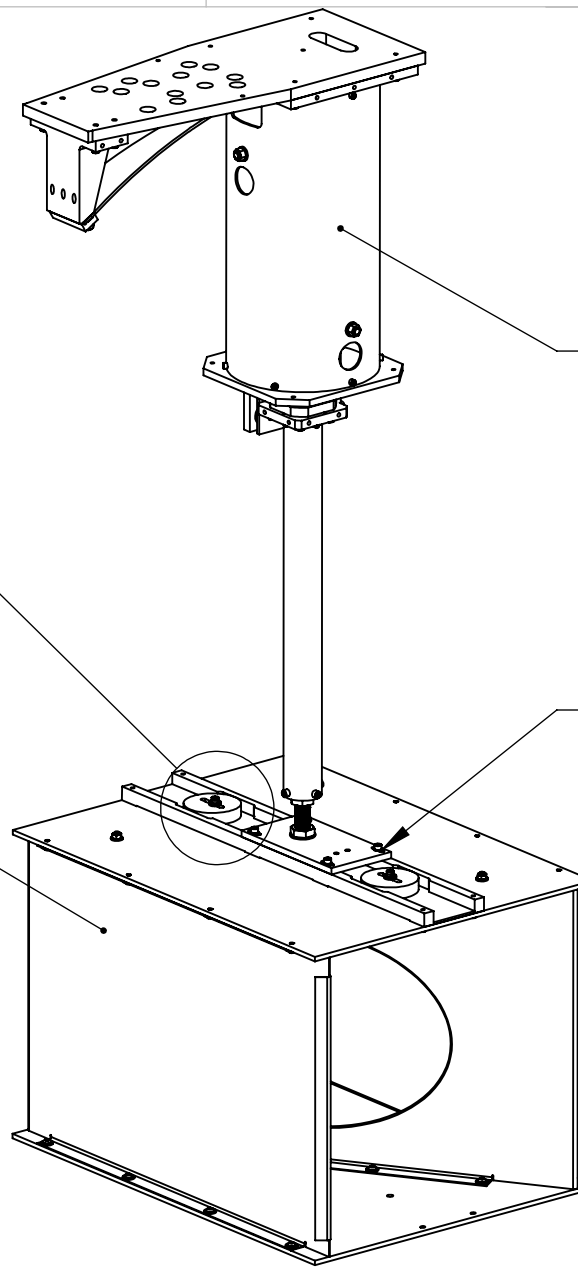
D
C
B
A



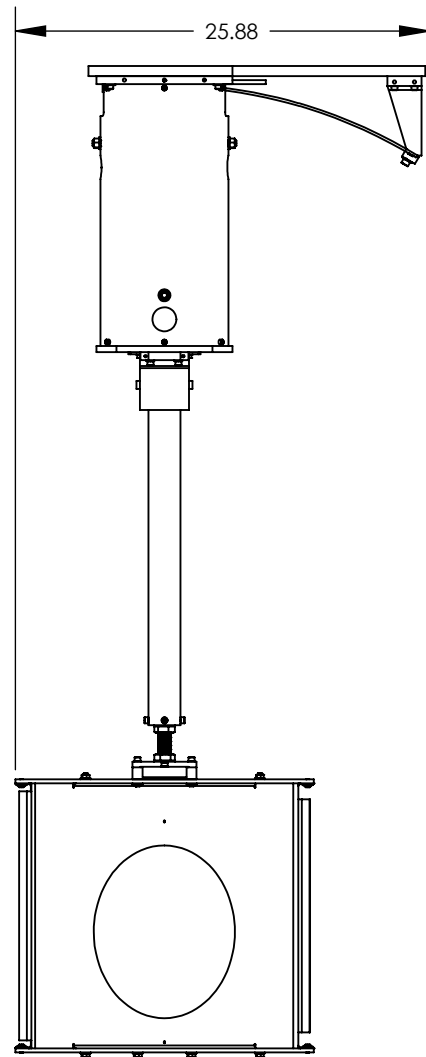
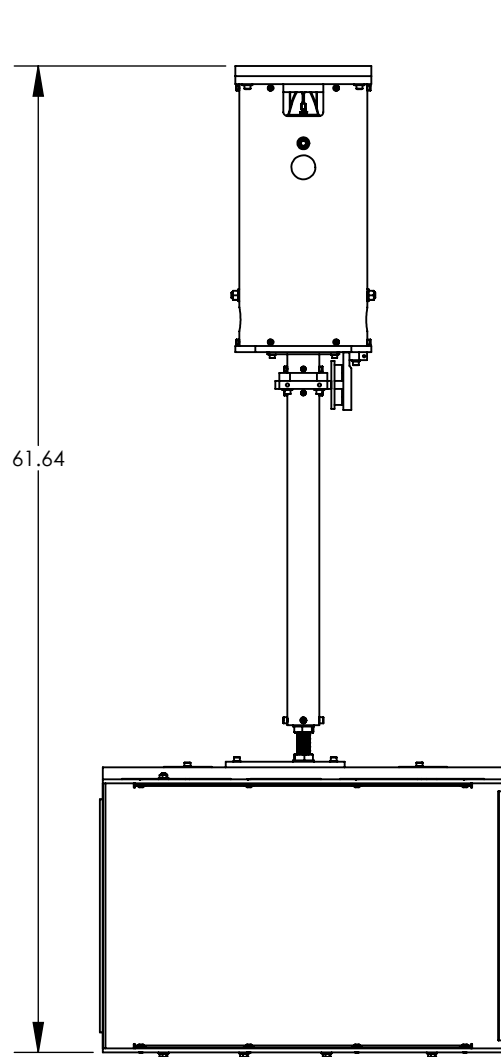
- 2X (7)
- 2X (5)
- 2X (3)



DETAIL J
SCALE 1 : 4



- (3) 4X
- (4) 4X



ITEM NO.	PART NUMBER	DESCRIPTION	MATERIAL	QTY.
8	C-2032-N	SHCS, 1/4-20 x 2" L , 18-8 SSTL	18-8 SSTL	2
7	D1200779	SLC, 1.25 POUND BALANCE WEIGHT	304 SSTL	2
6	98019A355	WASHER FLAT, 1/4" MIL-15795-810	300 SSTL	4
5	C-2016-N	SOCKET HEAD CAP SCREW, SHC, 1/4-20 x 1" L	18-8 SSTL	2
4	C-2012-N	SOCKET HEAD CAP SCREW, 1/4-20 X .75 LG	18-8 SSTL	4
3	NAS 620-C416L	1/4 FLAT WASHER, .260 ID x .47 OD X .02 THK	300 SSTL	6
2	D1101885	gLIGO AOS ITM ELLIPTICAL BAFFLE SUSPENSION ASSY, H1/L1	N/A	1
1	D1101806	gLIGO ITM ELLIPTICAL BAFFLE ASSEMBLY	N/A	1

PARTS LIST

NOTES AND TOLERANCES: (UNLESS OTHERWISE SPECIFIED)

- APPROXIMATE WEIGHT = 102.38 LBS.
- TORQUE SHCS TO VALUES SPECIFIED IN LIGO-T1100066.
- USE ITEM 8 WHEN ADDING BALANCE WEIGHTS TO BOX

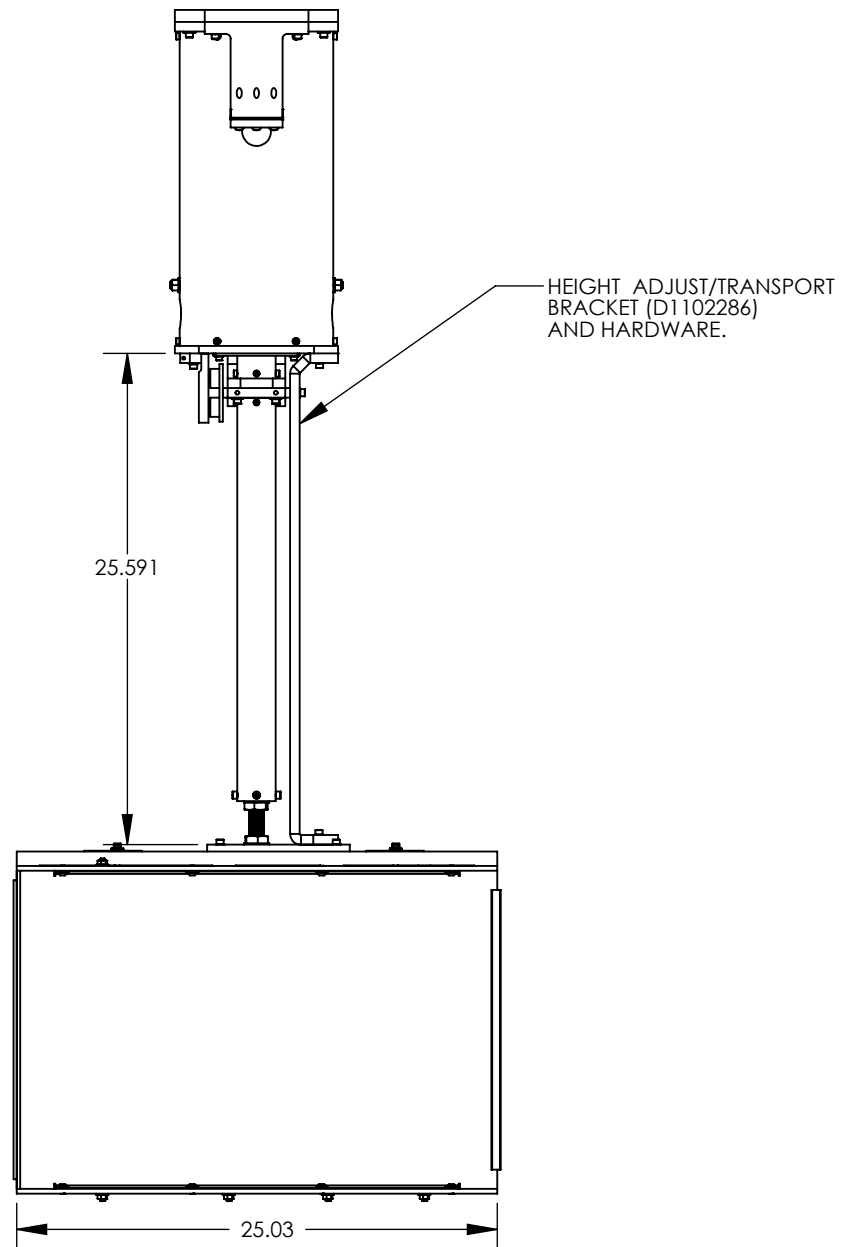
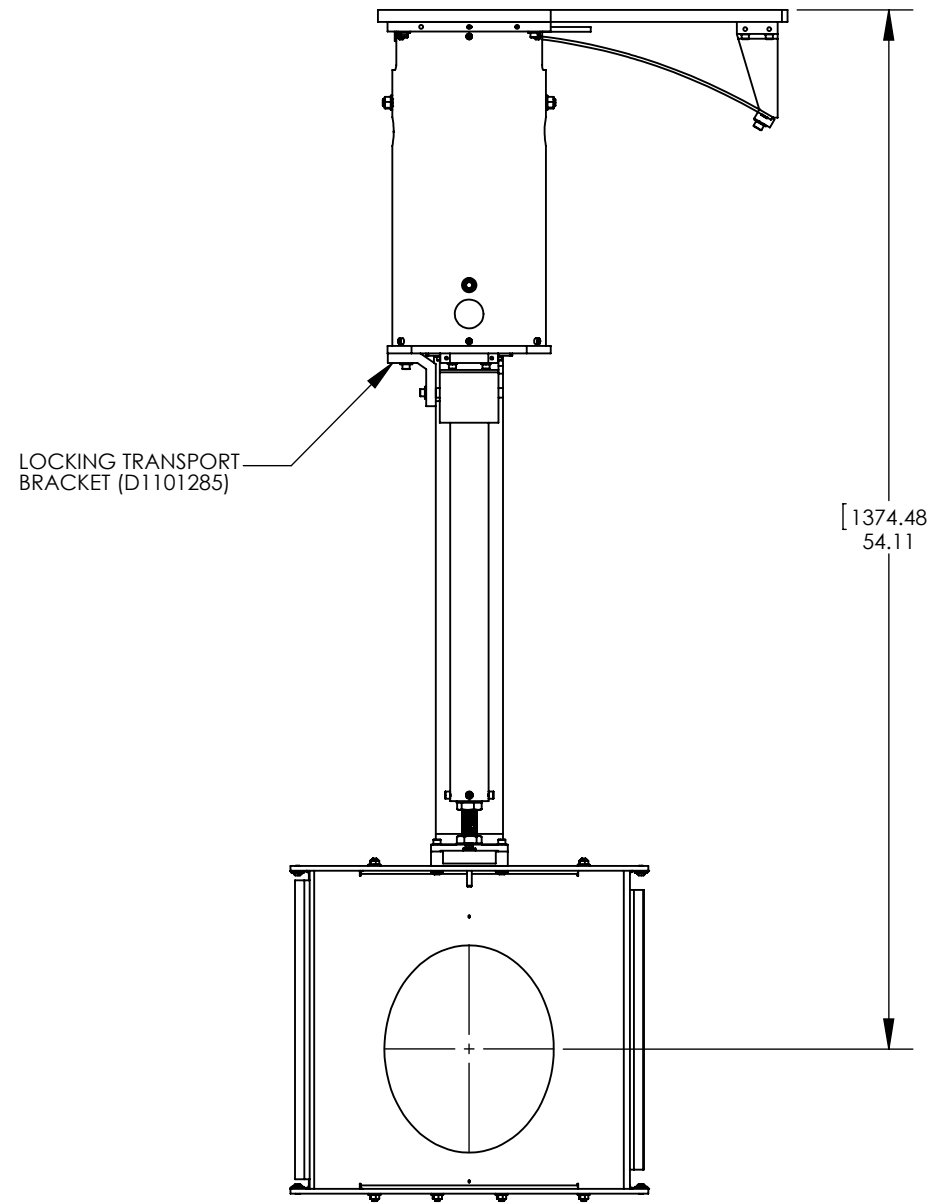
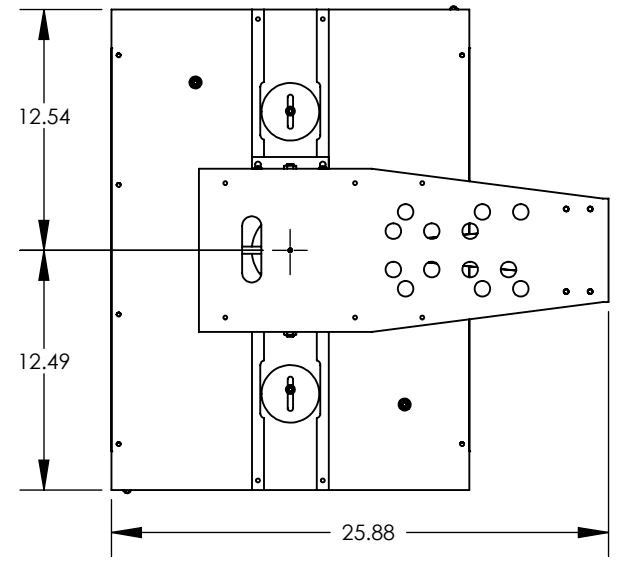
DIMENSIONS ARE IN INCHES
TOLERANCES:
.XX ± .02
.XXX ± .010
ANGULAR ± 1.0°

MATERIAL N/A FINISH N/A μinch

CALIFORNIA INSTITUTE OF TECHNOLOGY MASSACHUSETTS INSTITUTE OF TECHNOLOGY		PART NAME gLIGO AOS ITM ELLIPTICAL BAFFLE FINAL ASSY, H1/L1	
SYSTEM ADVANCED LIGO	SUB-SYSTEM AOS	DESIGNER M. RUIZ	DATE 07 DEC 2010
DRAFTER M. RUIZ	DATE 30 NOV 2010	CHECKER L. AUSTIN	APPROVAL M. SMITH
SIZE B	DWG. NO. D1003238	REV. v3	SHEET 1 OF 2

8 7 6 5 4 3 2 1

D1003238_AdLIGO_AOS_ITM Elliptical Baffle Final Assy, PART PDM REV: X-068, DRAWING PDM REV: X-042



LIGO CALIFORNIA INSTITUTE OF TECHNOLOGY MASSACHUSETTS INSTITUTE OF TECHNOLOGY	
SIZE DWG. NO. B D1003238	REV. v3
SCALE: 1:10 PROJECTION:	SHEET 2 OF 2