

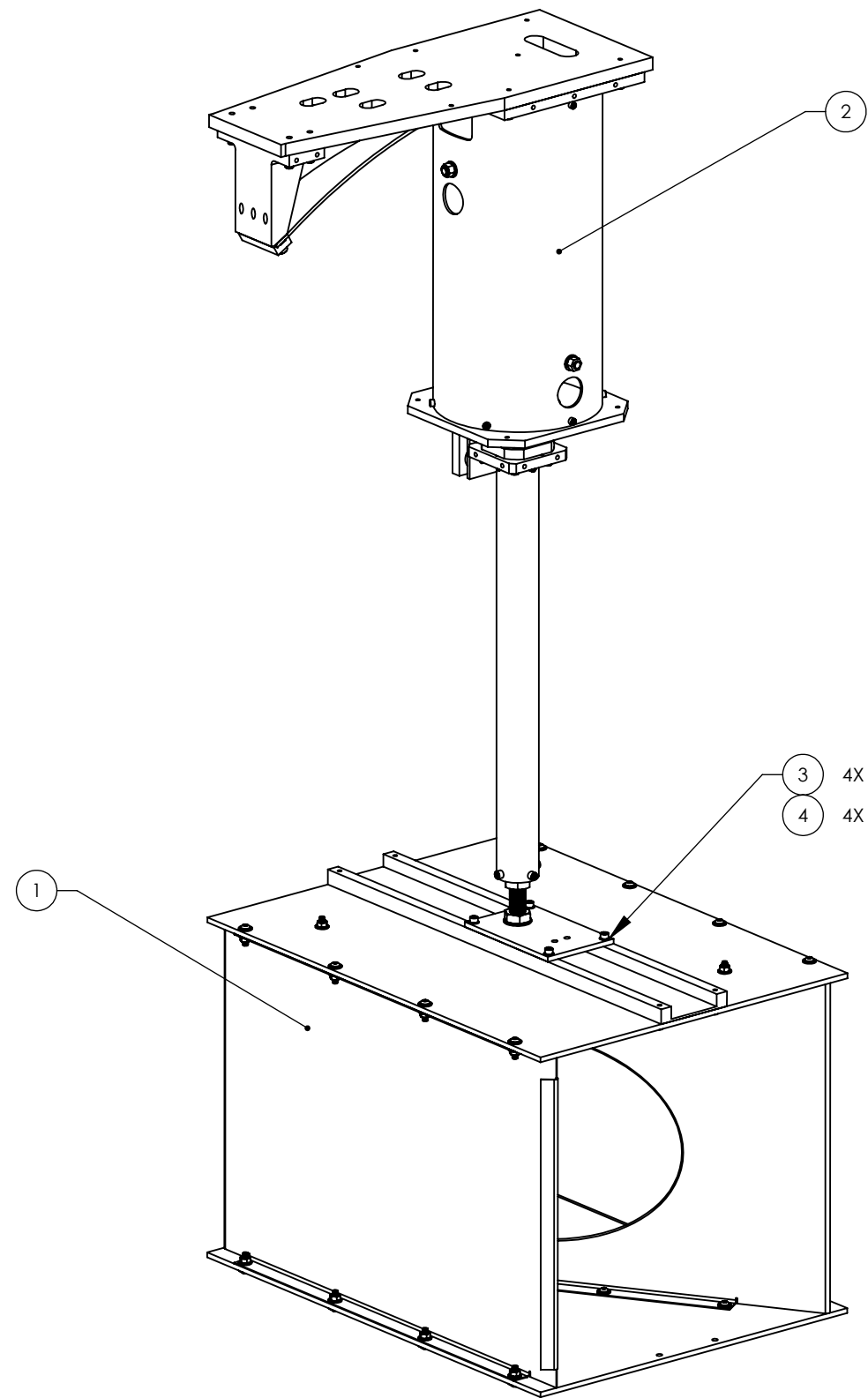
D1003238_AdLIGO_AOS_ITM_Elliptical Baffle Final Assy, PART PDM REV: X-045, DRAWING PDM REV: X-033

8 7 6 5 4 3 2 1

NOTES CONTINUED:

5. APPROXIMATE WEIGHT = 106.540LBS.

REV.	DATE	DCN #	BOM #
v1	10 DEC 2010	E1000736	E1000751
v2	07 OCT 2011	E1101007	E1101039
-	-	-	-



ITEM NO.	PART NUMBER	DESCRIPTION	MATERIAL	QTY.
4	MS 16995-50	SOCKET HEAD CAP SCREW, 1/4-20 X .75 LG	18-8 SSTL	4
3	NAS 620-C416L	1/4 FLAT WASHER, .260 ID x .47 OD X .02 THK	300 SSTL	4
2	D1101885	αLIGO AOS ITM ELLIPTICAL BAFFLE SUSPENSION ASSY, H1/L1	N/A	1
1	D1101806	αLIGO ITM ELLIPTICAL BAFFLE ASSEMBLY	N/A	1

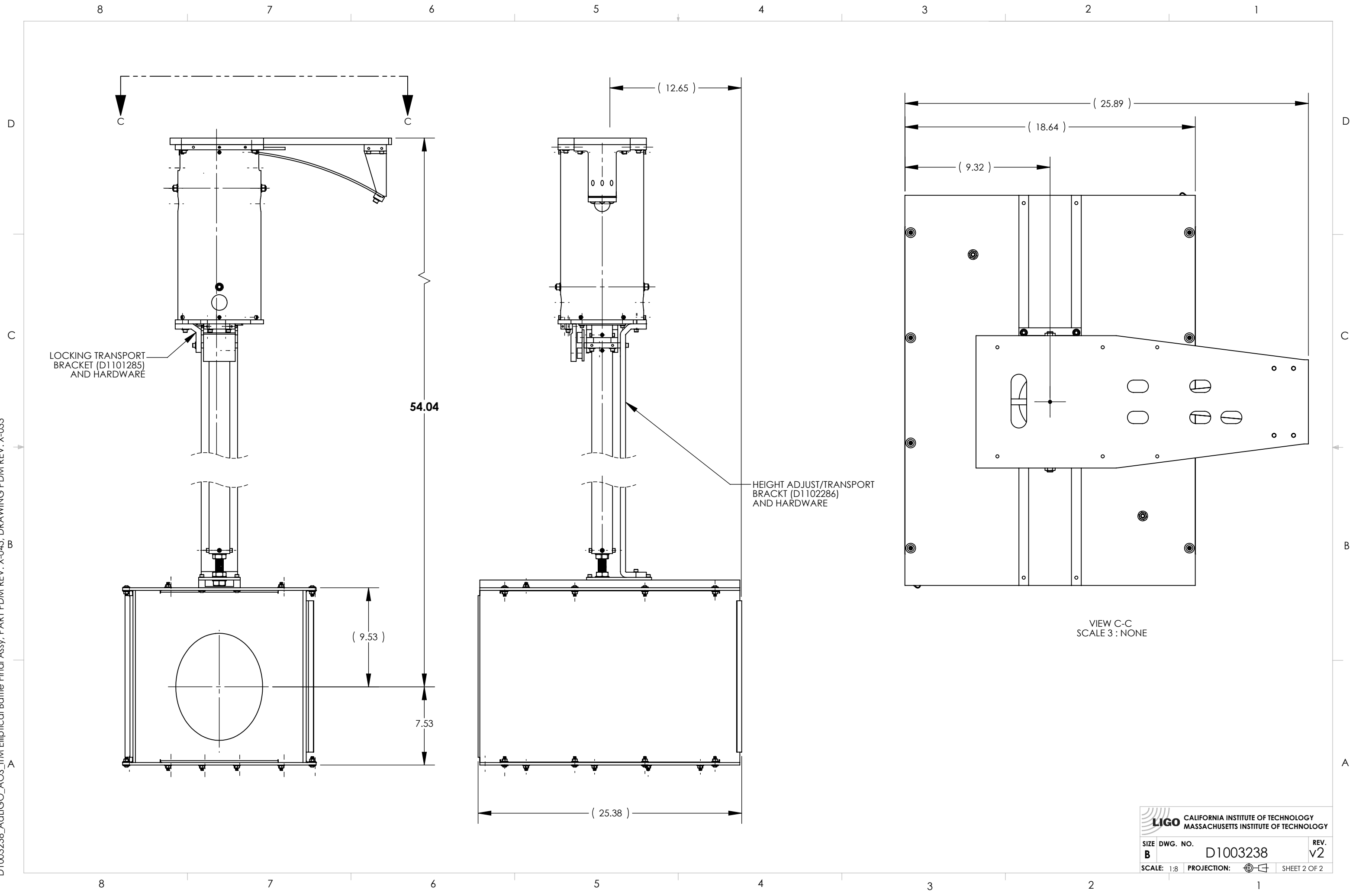
PARTS LIST

NOTES AND TOLERANCES: (UNLESS OTHERWISE SPECIFIED)	
DIMENSIONS ARE IN TOLERANCES: .XX ± .XXX ± ANGULAR ± °	
1. INTERPRET DRAWING PER ASME Y14.5-1994. 2. REMOVE ALL SHARP EDGES, .005-.015, FOR MACHINED PARTS. ROUND ALL EDGES APPROXIMATELY R.02 FOR SHEET METAL PARTS. 3. DO NOT SCALE FROM DRAWING. 4. ALL MACHINING FLUIDS MUST BE FULLY SYNTHETIC, FULLY WATER SOLUBLE AND FREE OF SULFUR, SILICONE, AND CHLORINE.	
MATERIAL	N/A
FINISH	N/A μinch

CALIFORNIA INSTITUTE OF TECHNOLOGY MASSACHUSETTS INSTITUTE OF TECHNOLOGY		PART NAME αLIGO AOS ITM ELLIPTICAL BAFFLE FINAL ASSY, H1/L1	
SYSTEM	SUB-SYSTEM	DESIGNER	SIZE DWG. NO.
		M.RUIZ	30 NOV 2010
CHECKER			B
APPROVAL			D1003238
		SCALE: 1:8	PROJECTION: SHEET 1 OF 2
REV.			v2

8 7 6 5 4 3 2 1

D1003238_AcLIGO_AOS_ITM Elliptical Baffle Final Assy, PART PDM REV: X-045, DRAWING PDM REV: X-033



 CALIFORNIA INSTITUTE OF TECHNOLOGY MASSACHUSETTS INSTITUTE OF TECHNOLOGY		
SIZE	DWG. NO.	REV.
B	D1003238	v2
SCALE: 1:8	PROJECTION:	SHEET 2 OF 2