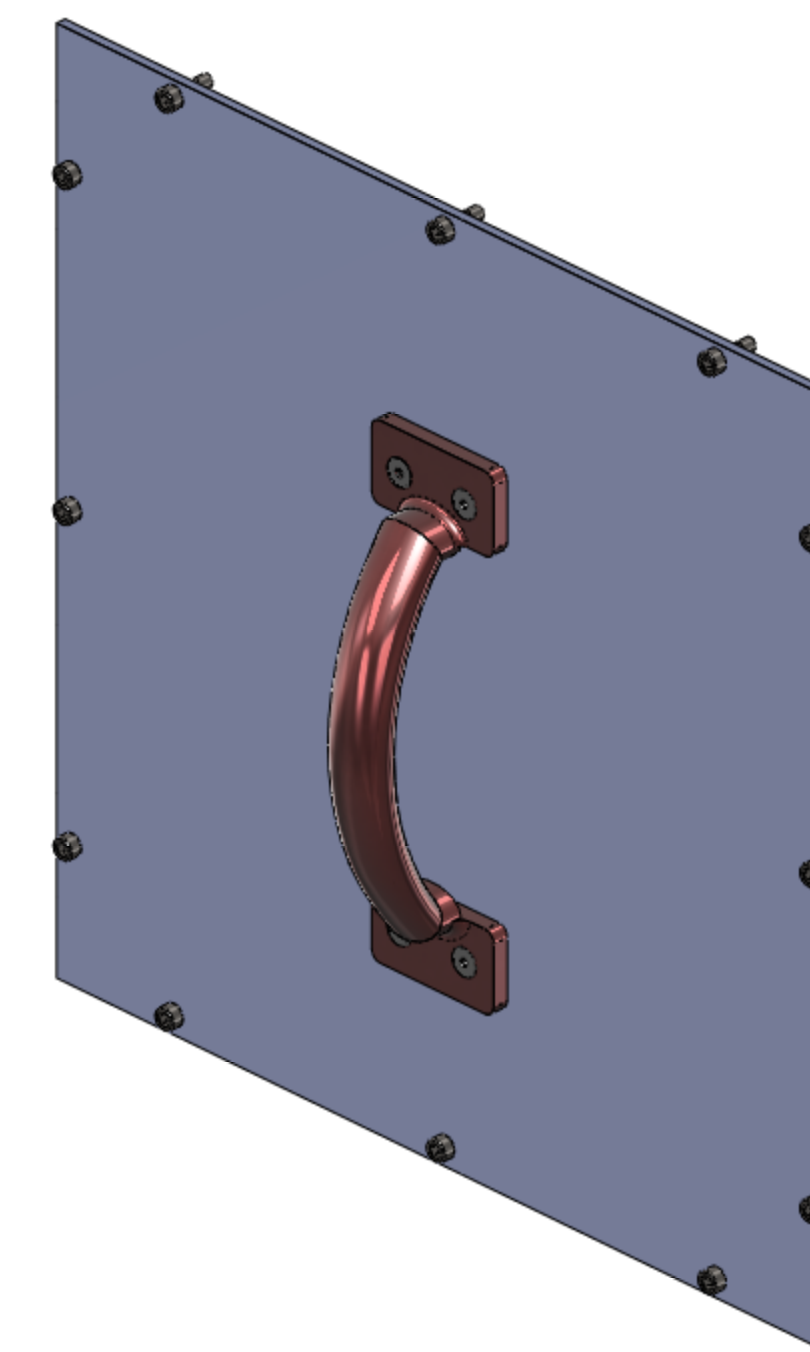
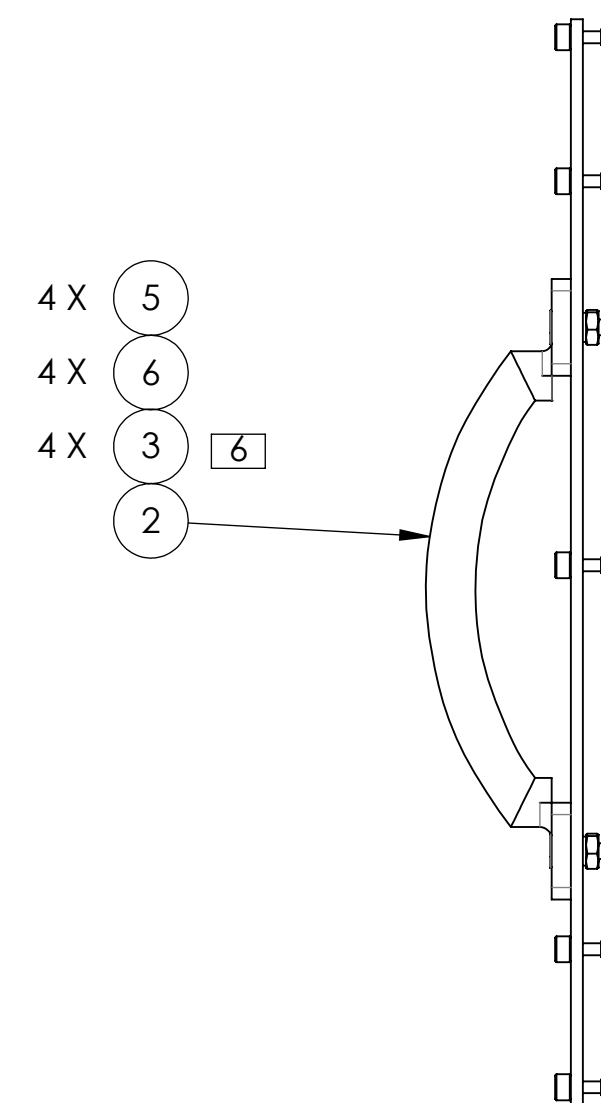
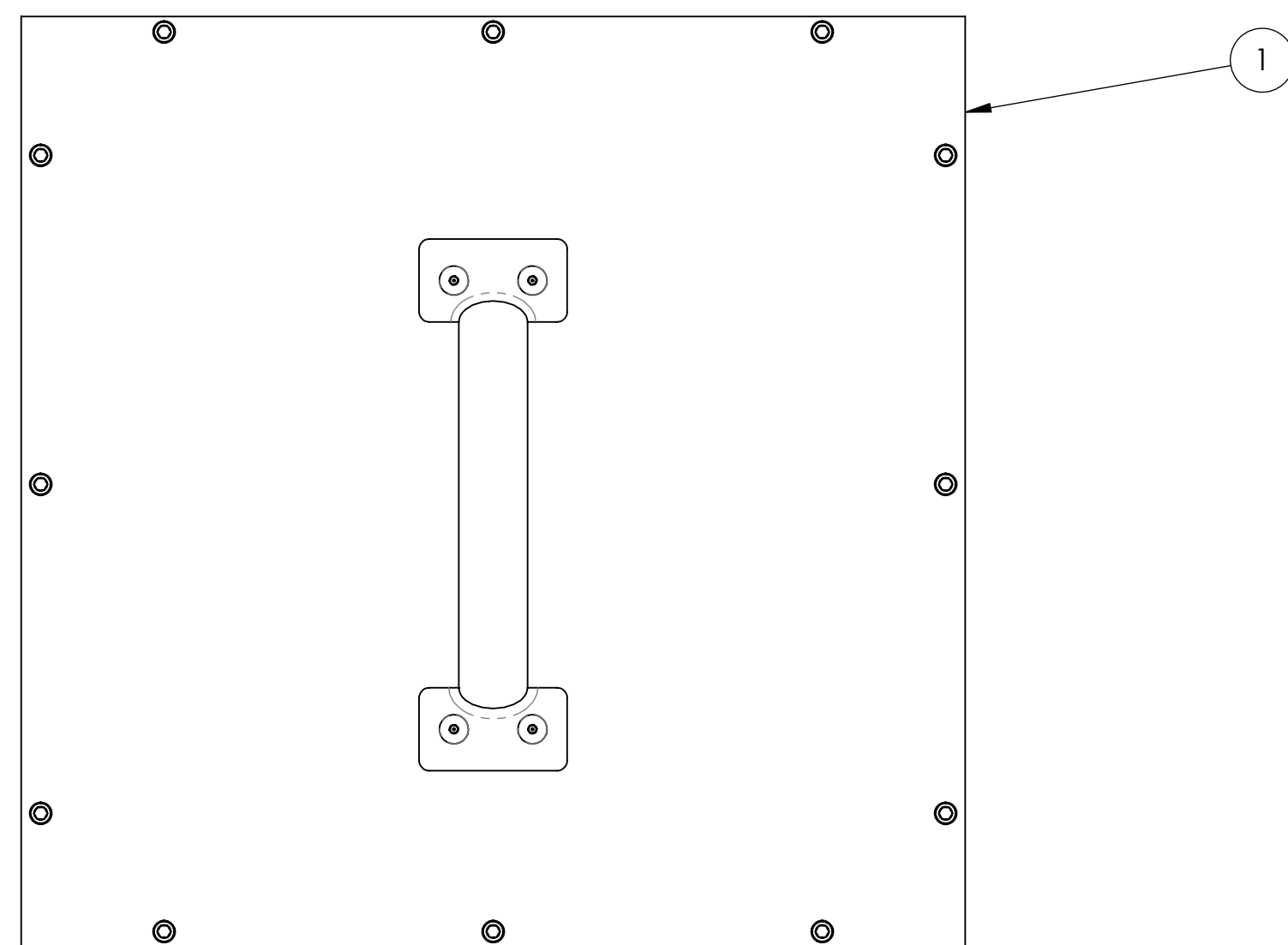
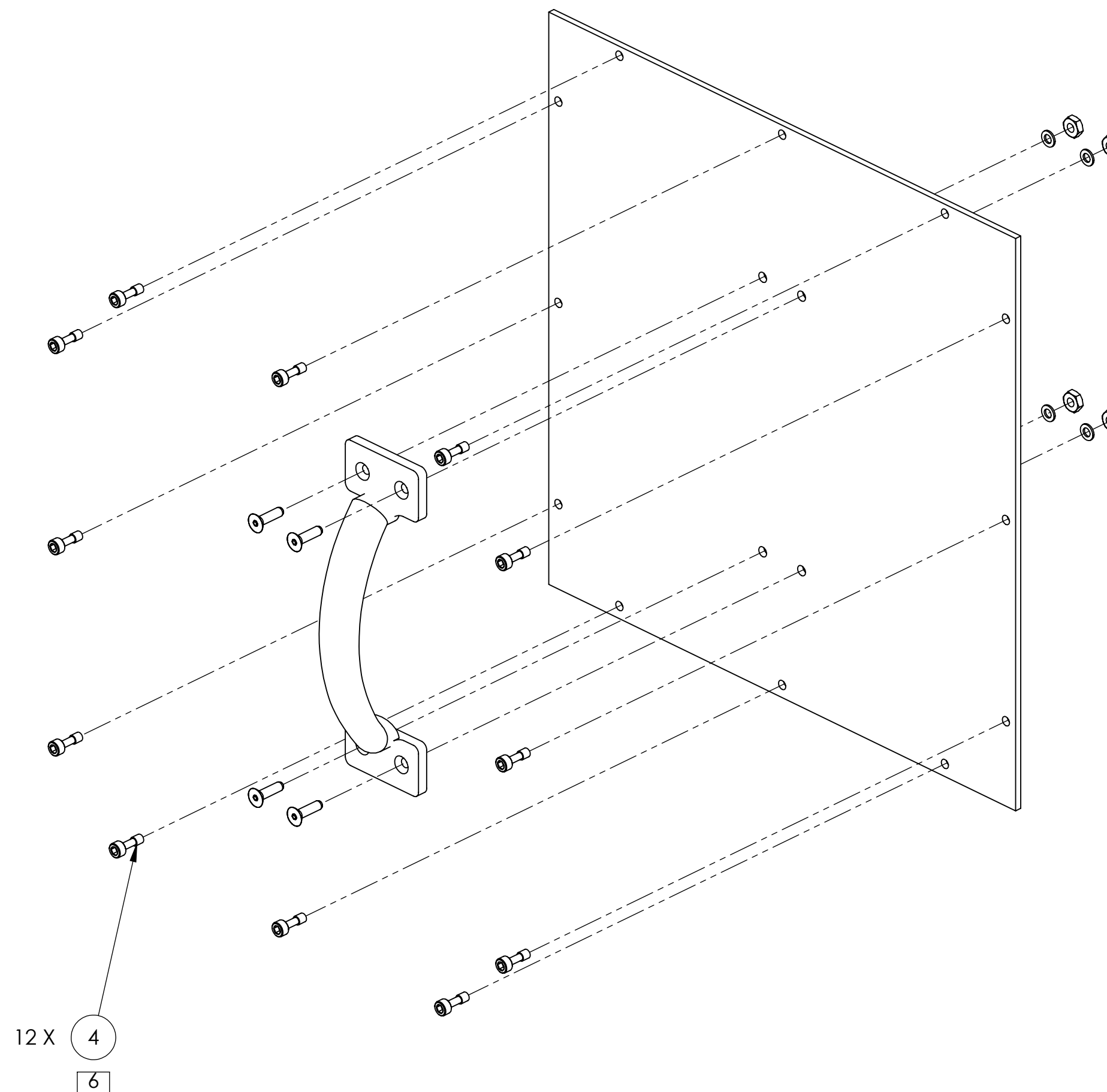
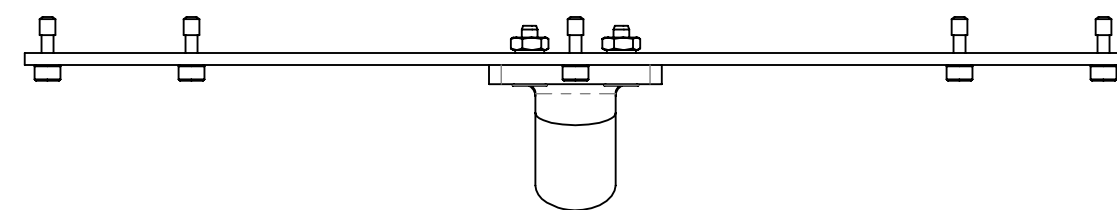


NOTES CONTINUED:
 ⑤ SCRIBE, ENGRAVE, LASER MARK OR MECHANICALLY STAMP (NO DYES OR INKS) A UNIQUE THREE DIGIT SERIAL NUMBER & REVISION NUMBER ON EACH PART. SERIAL NUMBERS START AT 001 FOR THE FIRST ARTICLE AND PROCEED CONSECUTIVELY. BAG AND TAG PARTS WITH THEIR DRAWING PART NUMBER, REVISION, VARIANT OR "TYPE" (IF APPLICABLE) AND QUANTITY. IF PARTS ARE TOO SMALL TO SCRIBE, BAGGING AND TAGGING ALONE IS SUFFICIENT. EXAMPLE (PART): 001-v1
 EXAMPLE (TAG): DXXXXXX-VY, TYPE-XX, QTY: TBD

⑥ TORQUE TO 11.5 IN-LB [1.3 N-M]



REV.	DATE	DCN #	DRAWING TREE #
v1	27 JUL 2011	E1100655-v1	E1100656-v1
-	-	-	-
-	-	-	-

ITEM NO.	PART NUMBER	DESCRIPTION	MATERIAL	REQ	SPARE	TOTAL
6	N-832	HN No. 8	18-8 SSSL	4	1	5
5	WF-08	FLAT WASHER, #8, .169 ID, .304 OD, .032 THK	18-8 SSSL	4	1	5
4	MSC #41852401	SCREW, SHC, CAPTIVE, 8-32 X .50 LG.	18-8 SSSL	12	3	15
3	FA-810-N	SCREW, FH, 8-32 X .625 LG	18-8 SSSL	4	1	5
2	MSC #32845752	DOOR PULL, 1.75	STEEL	1	0	1
1	D1003216	SIDE COVER WALL, CO2P VP ENCLOSURE	6061-T6 AI	1	0	1

NOTES AND TOLERANCES: (UNLESS OTHERWISE SPECIFIED)	
1. INTERPRET DRAWING PER ASME Y14.5-1994. 2. REMOVE ALL SHARP EDGES, .005-.015, FOR MACHINED PARTS. ROUND ALL EDGES APPROXIMATELY R.02 FOR SHEET METAL PARTS. 3. DO NOT SCALE FROM DRAWING. 4. ALL MACHINING FLUIDS MUST BE FULLY SYNTHETIC, FULLY WATER SOLUBLE AND FREE OF SULFUR, SILICONE, AND CHLORINE.	
DIMENSIONS ARE IN INCHES	
TOLERANCES: .XX ± .01 .XXX ± .005	
ANGULAR ± 1.0°	
MATERIAL	N/A
FINISH	N/A

LIGO CALIFORNIA INSTITUTE OF TECHNOLOGY
 MASSACHUSETTS INSTITUTE OF TECHNOLOGY

SYSTEM: ADVANCED LIGO SUB-SYSTEM: AOS

NEXT ASSY: D1003193

PART NAME: VP ENCLOSURE SIDE COVER ASSY, CO2P

DESIGNER	A. COLE	02 DEC 2010	SIZE	DWG. NO.	REV.
DRAFTER	A. LYNCH	05 JUL 2011	D	D1003215	v1
CHECKER	M. JACOBSON	27 JUL 2011			
APPROVAL	P. WILLEMS	11 JUL 2011	SCALE: 1:2	PROJECTION:	SHEET 1 OF 1

D1003215_VP ENCLOSURE SIDE COVER ASSY, CO2P_PRT PDM REV: X-008_DRAWING PDM REV: X-008