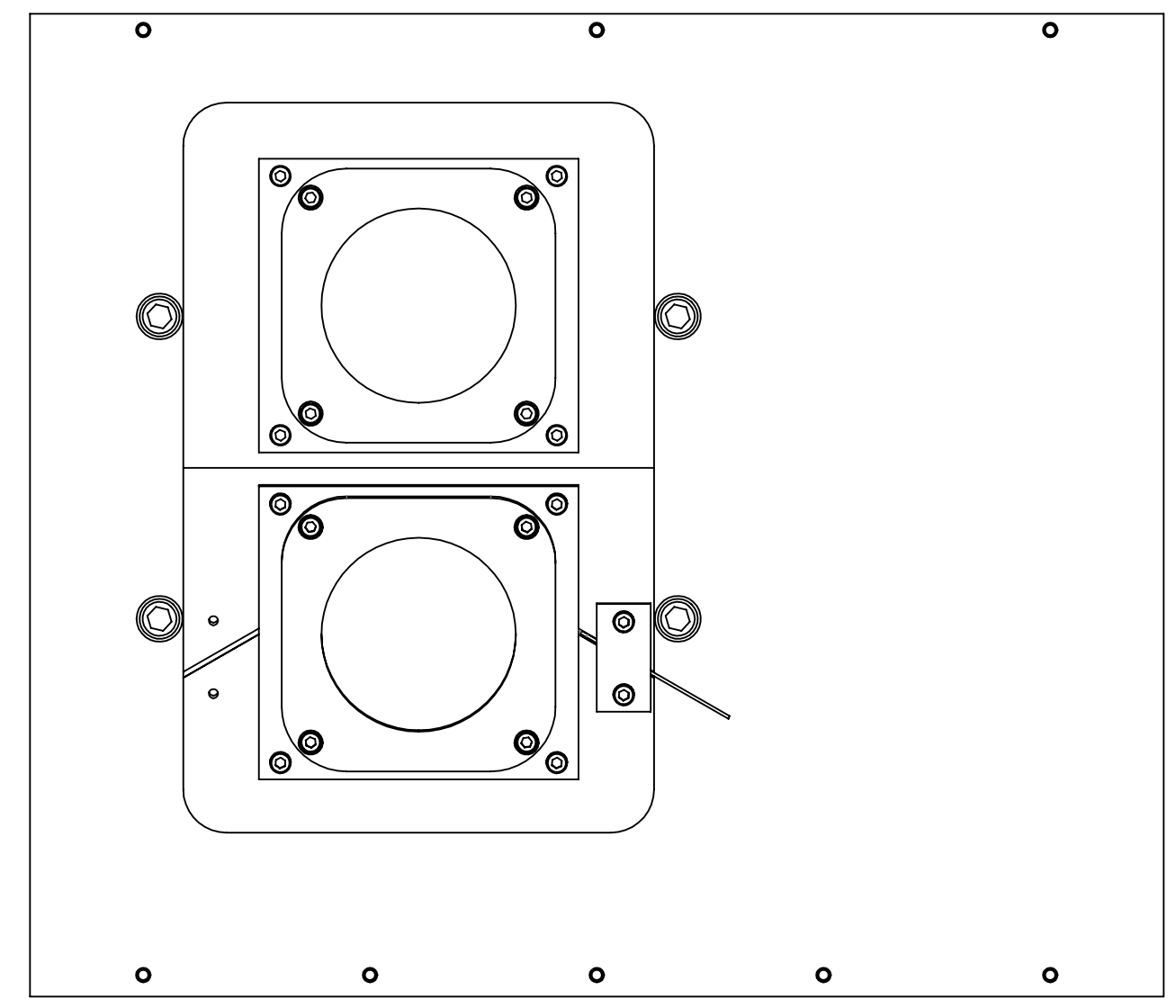
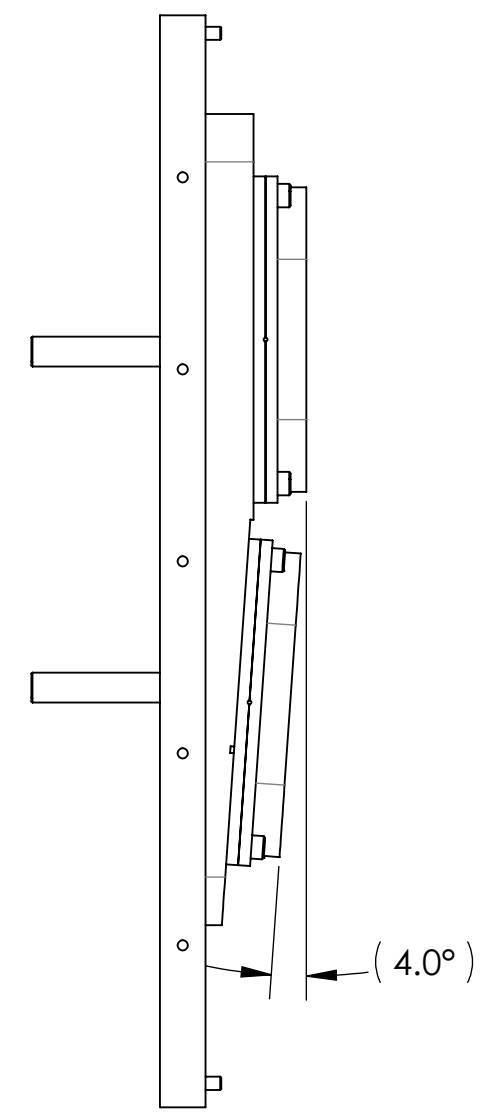
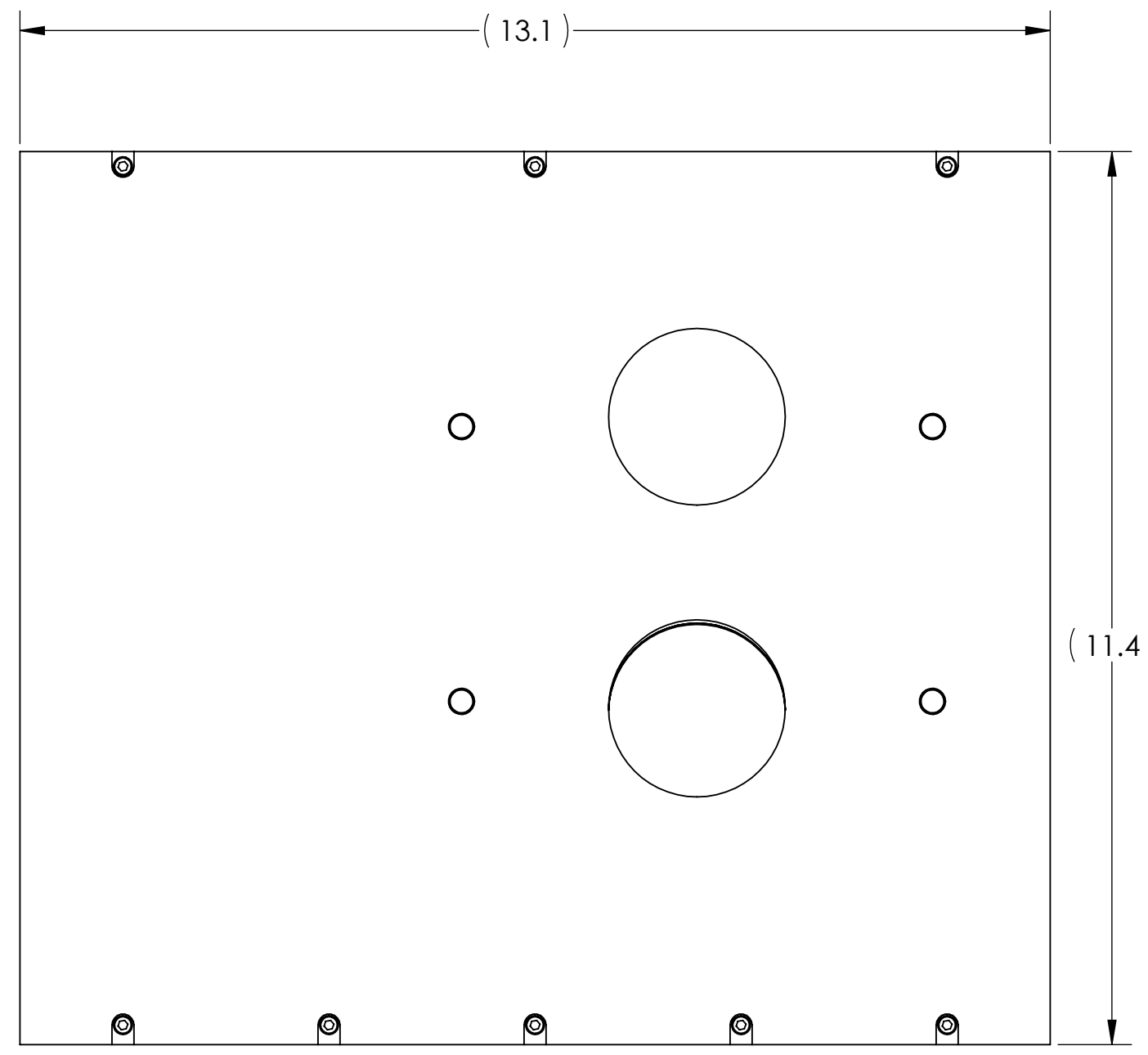


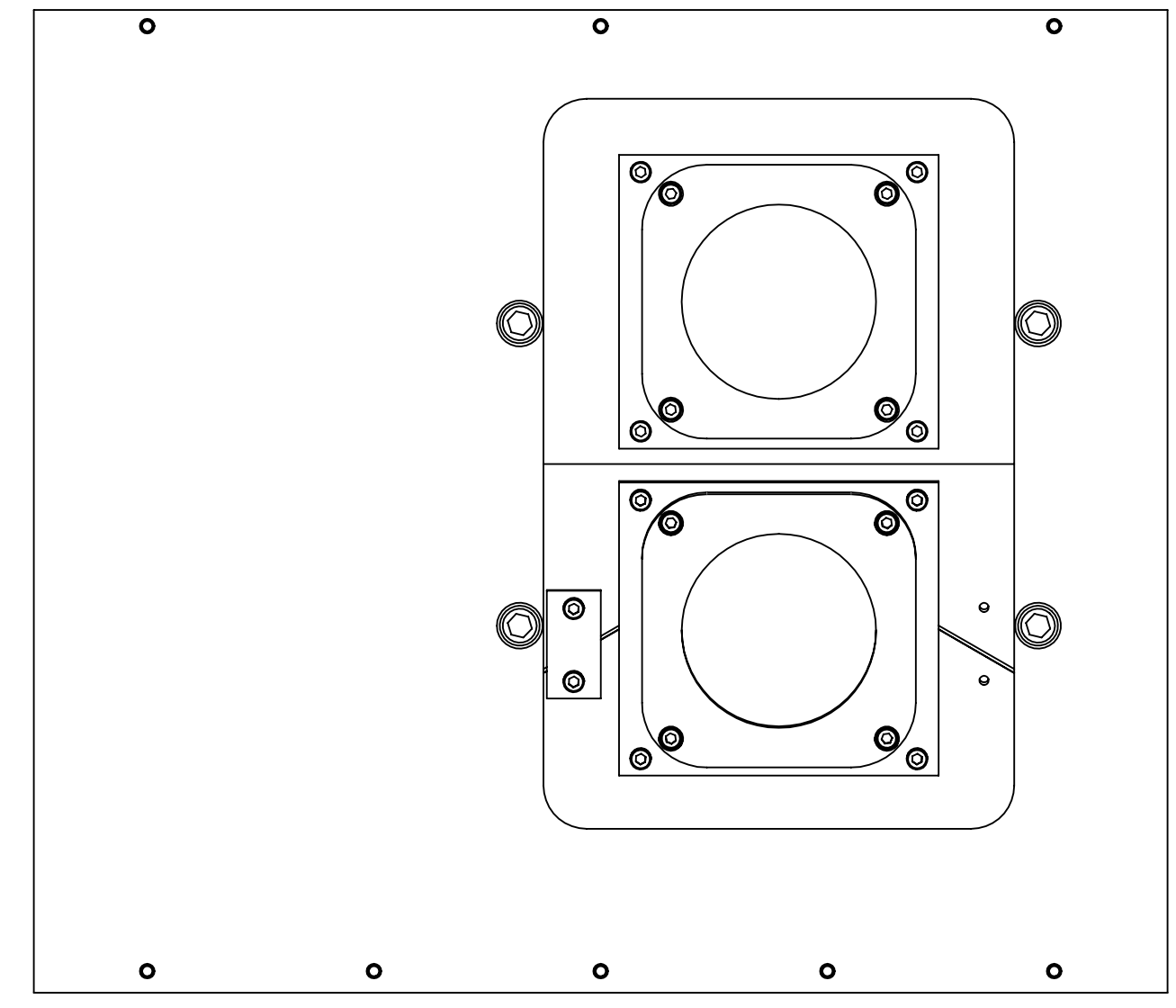
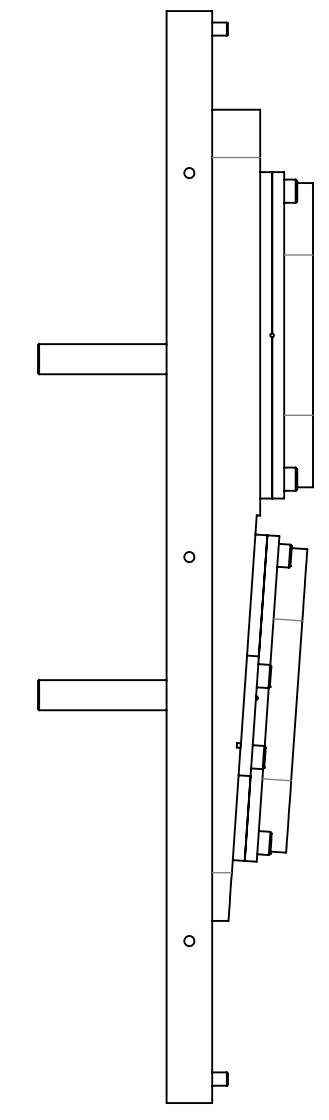
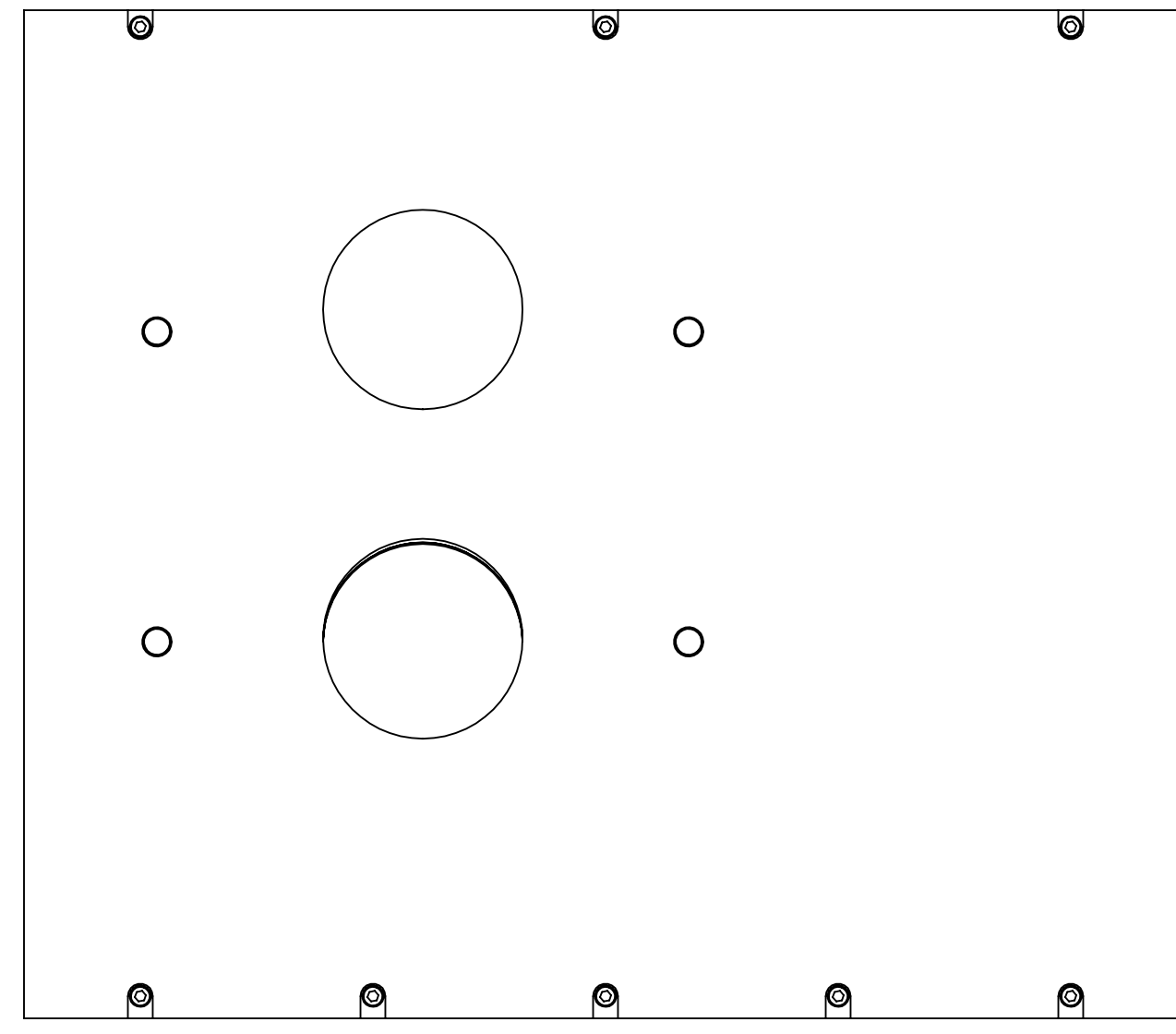
- NOTES CONTINUED:**
- 5 TORQUE TO 5 IN-LB [.5 N-m]
 - 6 TORQUE TO 62 IN-LB [7 N-m]
 - 7 APPROXIMATE WEIGHT = 4.109

TYPE (CONFIGURATION)	DESCRIPTION
-01	aLIGO, TCS, H2, X-ARM (SHOWN TOP)
-02	aLIGO, TCS, H2, Y-ARM (MIRROR OF -01, SHOWN BOTTOM)

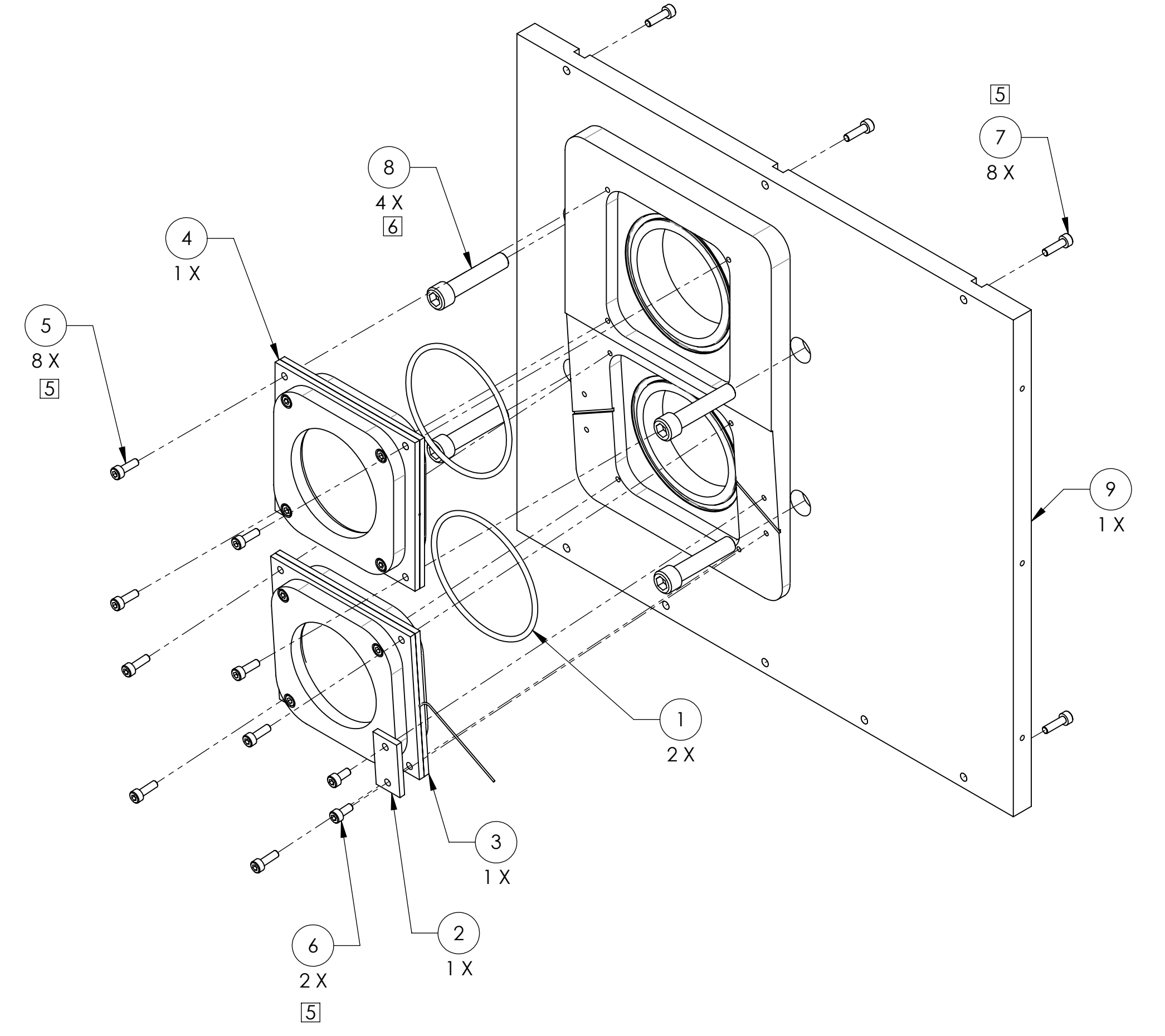
REV.	DATE	DCN #	DRAWING TREE #
v3	23 AUG 2011	E1100655-v1	E1100656-v1



TYPE -01



TYPE -02



ITEM NO.	PART NUMBER	DESCRIPTION	MATERIAL	REQ/-01	REQ/-02	SPARE	TOTAL TYPE -01, -02
10	D1003206-02	VP ENCLOSURE FRONT WALL	6061 Alloy	-	1	0	1
9	D1003206-01	VP ENCLOSURE FRONT WALL	6061 Alloy	1	-	0	1
8	C-1824-N	SHCS 5/16-18 X 1.5	18-8 SSTL	4	4	2	10
7	C-608-N	SHCS #6-32 X 0.5	18-8 SSTL	8	8	4	20
6	C-605-N	SHCS #6-32 X 0.3125	18-8 SSTL	2	2	2	6
5	C-607-N	SHCS #6-32 X 0.4375	18-8 SSTL	8	8	4	20
4	D1100494	OPTICAL WINDOW CLAM SHELL ASSY	N/A	1	1	0	2
3	D1100493	ZNSE WINDOW CLAM SHELL ASSY	N/A	1	1	0	2
2	D1100413	STRESS RELIEF BAR	6061 Alloy	1	1	2	4
1	D080631	O-RING, 3 IN VIEWPORTS	VITON	2	2	1	5

PARTS LIST

DIMENSIONS ARE IN INCHES		NOTES AND TOLERANCES: (UNLESS OTHERWISE SPECIFIED)	
TOLERANCES: .XX ± .01 .XXX ± .005		1. INTERPRET DRAWING PER ASME Y14.5-1994. 2. REMOVE ALL SHARP EDGES, .005-.015, FOR MACHINED PARTS. ROUND ALL EDGES APPROXIMATELY R.02 FOR SHEET METAL PARTS. 3. DO NOT SCALE FROM DRAWING. 4. ALL MACHINING FLUIDS MUST BE FULLY SYNTHETIC, FULLY WATER SOLUBLE AND FREE OF SULFUR, SILICONE, AND CHLORINE.	
ANGULAR ± 1.0°	MATERIAL	FINISH	NEXT ASSY
	N/A	N/A μinch	D1003193

CALIFORNIA INSTITUTE OF TECHNOLOGY MASSACHUSETTS INSTITUTE OF TECHNOLOGY		PART NAME VP ENCLOSURE FRONT COVER ASSY, H2 CO2P	
SYSTEM ADVANCED LIGO	SUB-SYSTEM AOS	DESIGNER A. COLE	DATE 02 DEC 2010
CHECKER M. JACOBSON	DATE 22 AUG 2011	SIZE D	DWG. NO. D1003204
APPROVAL A. BROOKS	DATE 23 AUG 2011	SCALE 1:2	PROJECTION
		REV. v3	SHEET 1 OF 1

D1003204_VP ENCLOSURE FRONT COVER ASSY, CO2P, PART FROM REV. X-0408, DRAWING FROM REV. X-026