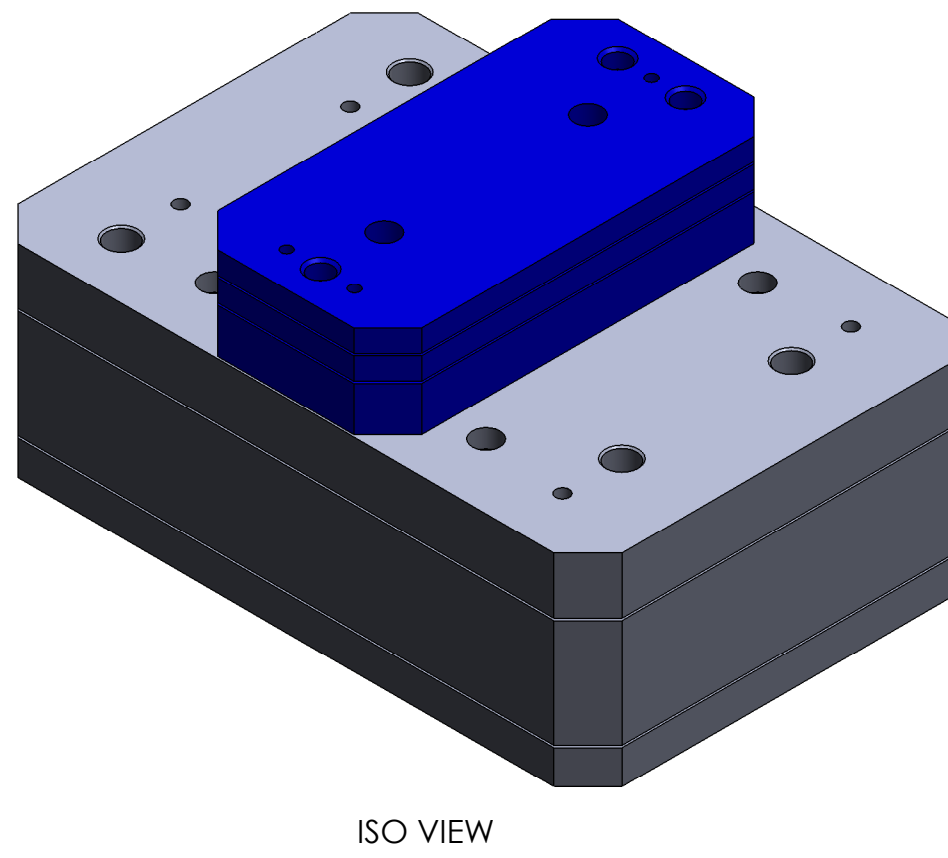
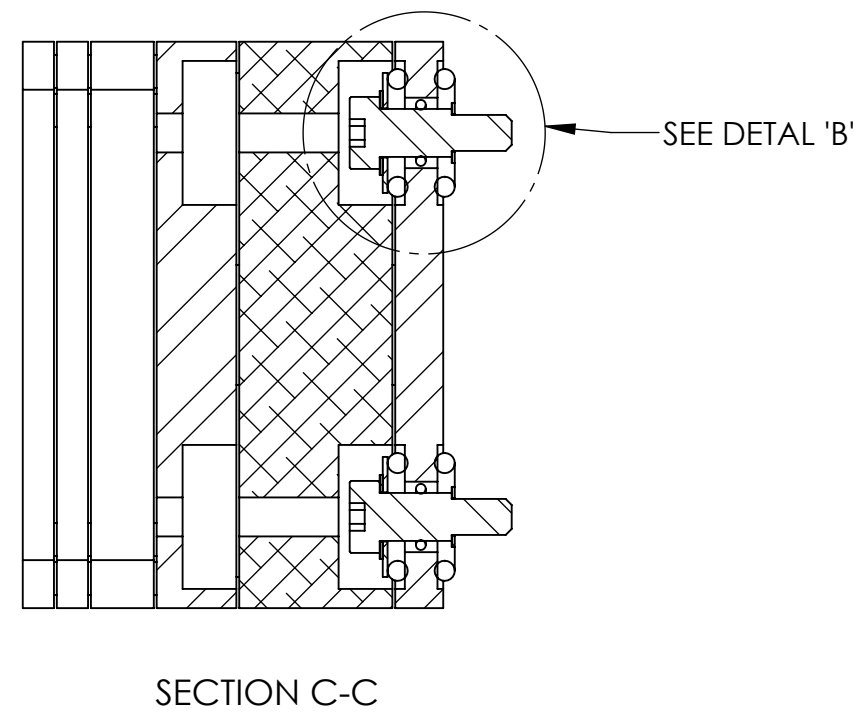
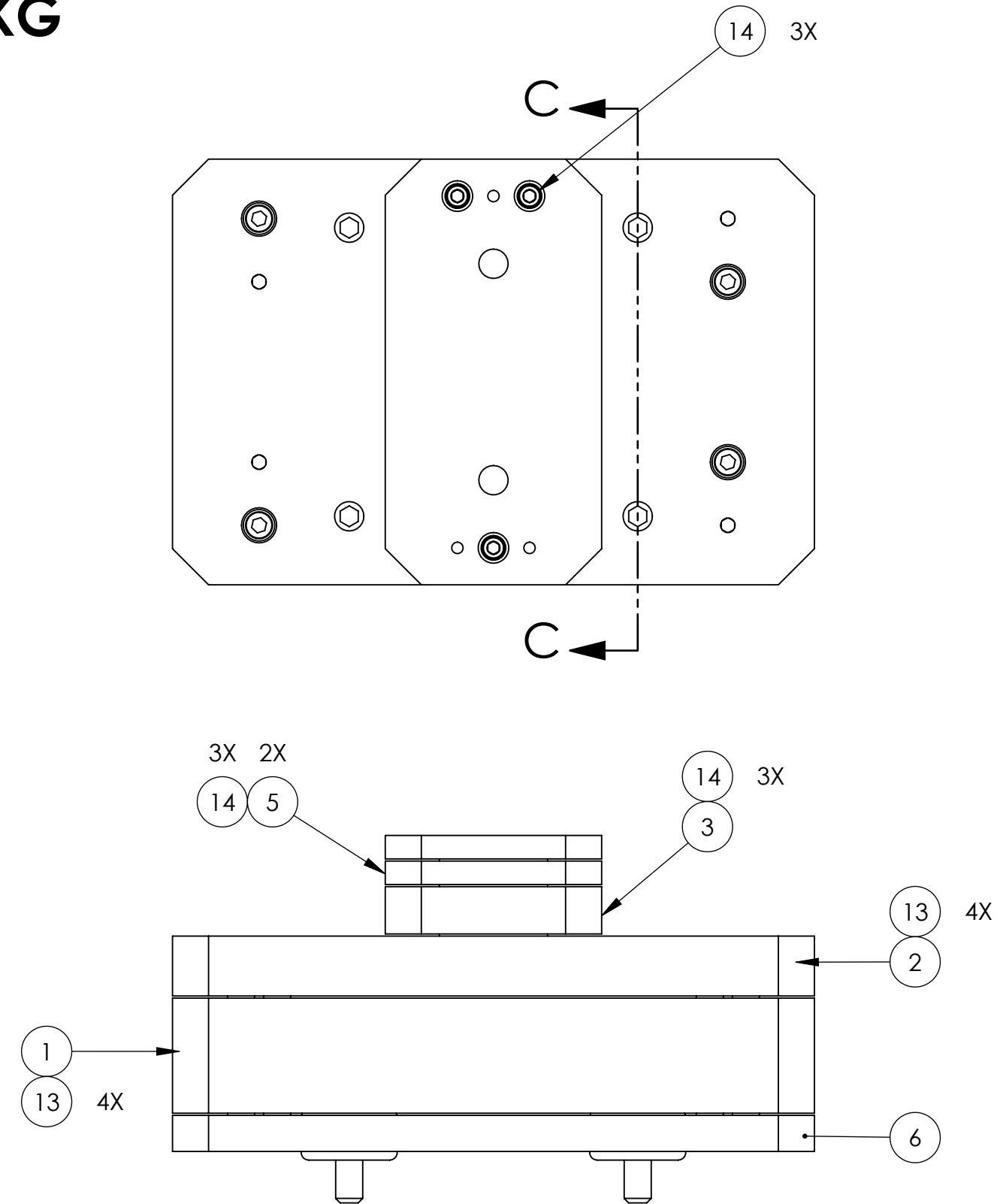
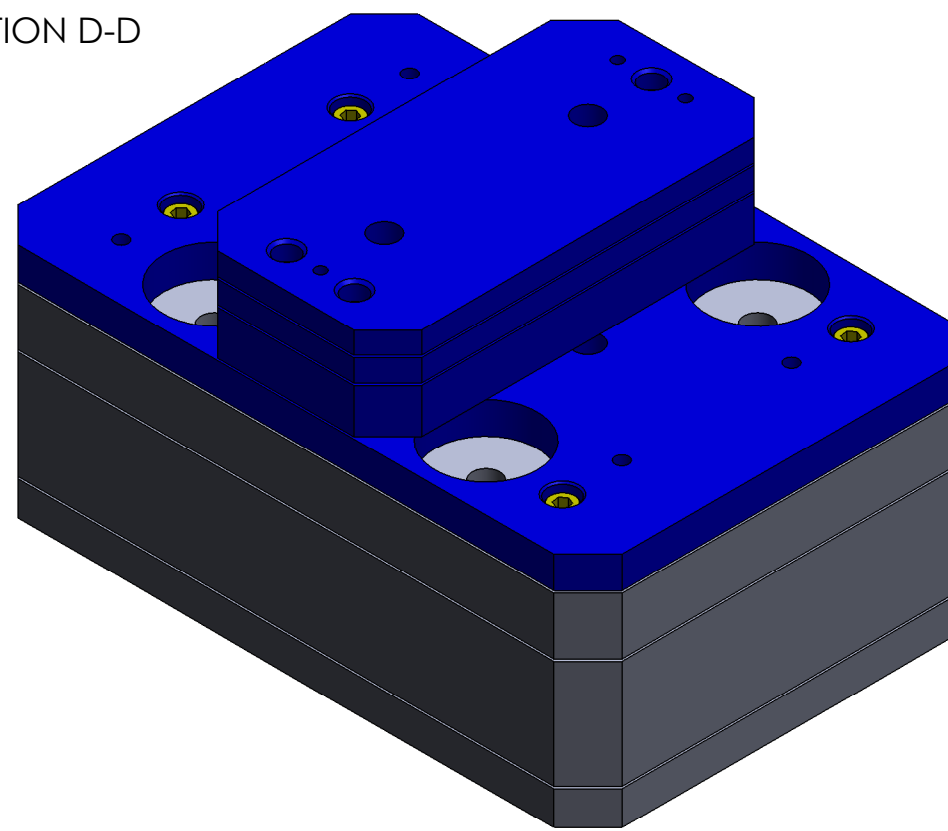
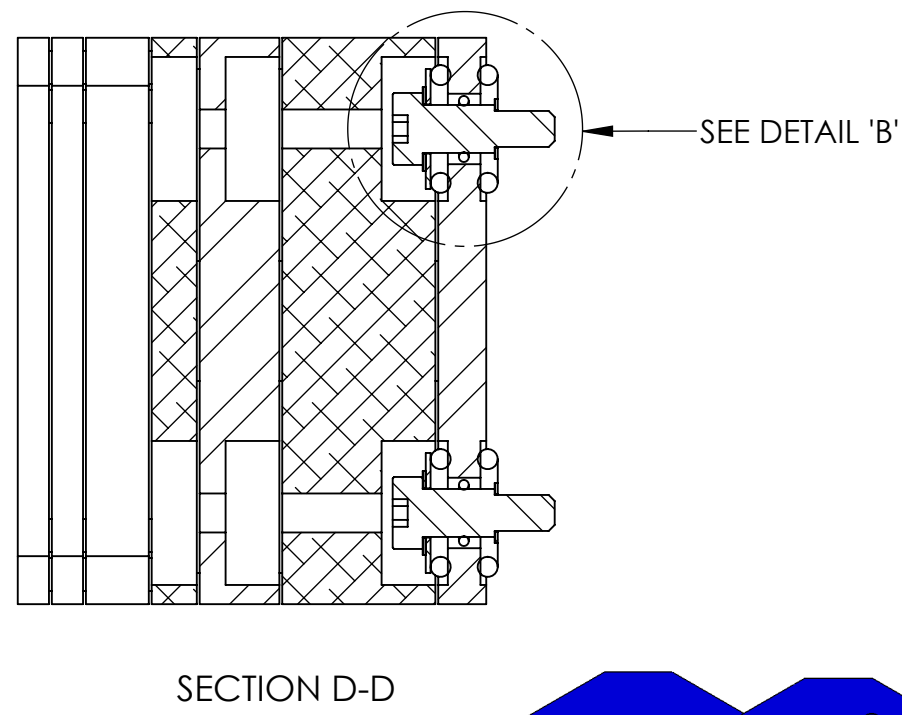
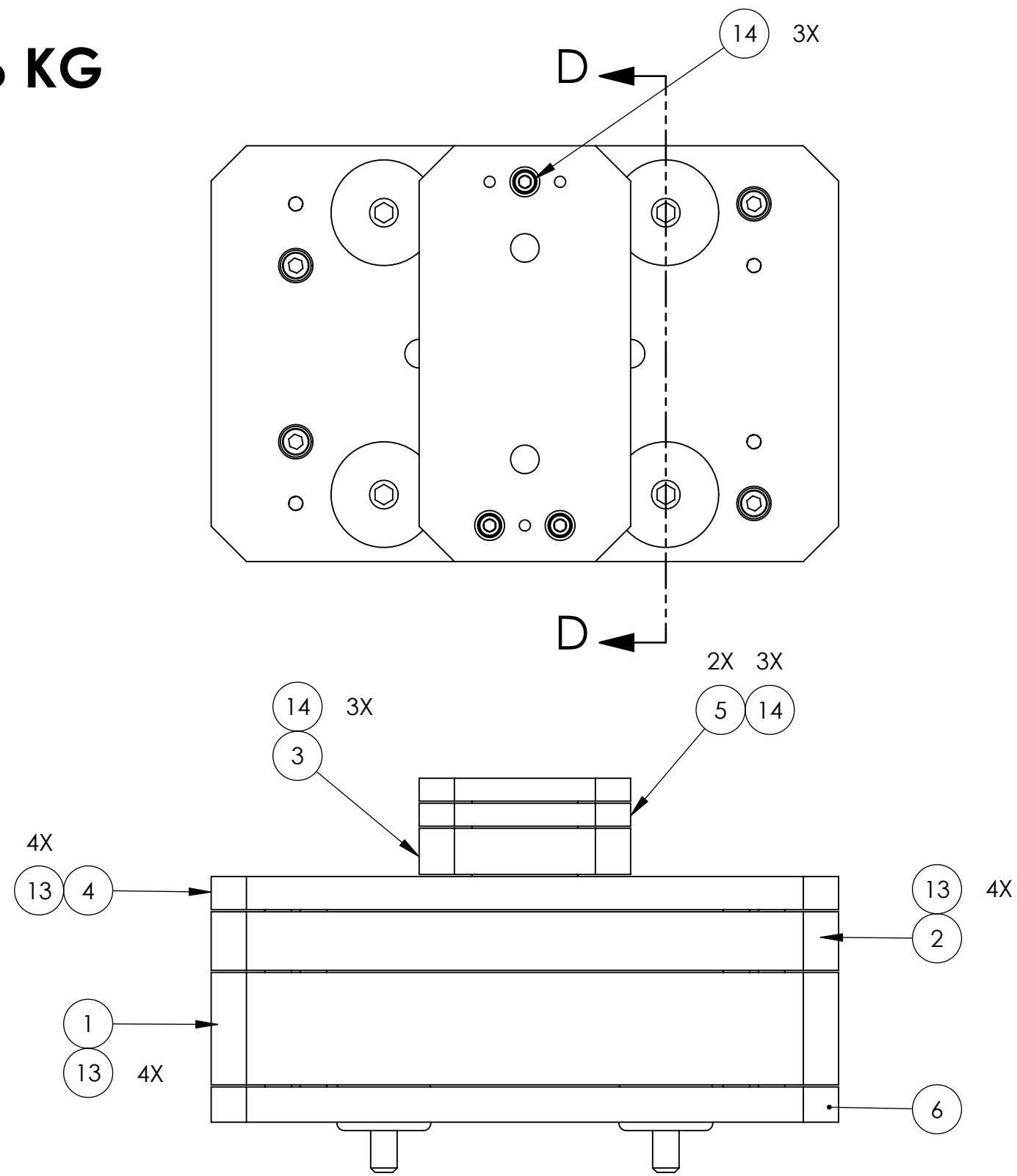


-19.6 KG



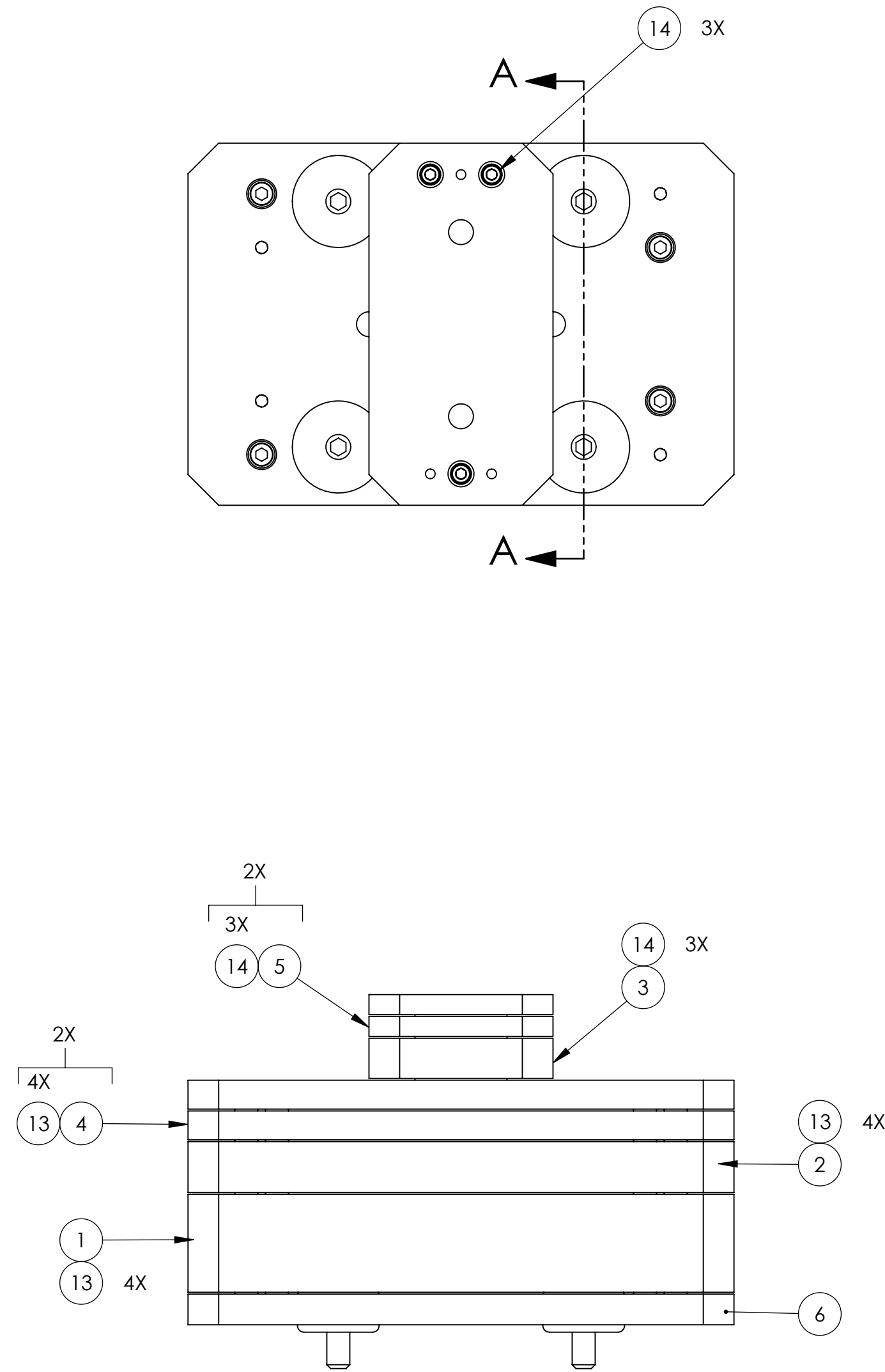
ISO VIEW

-20.6 KG

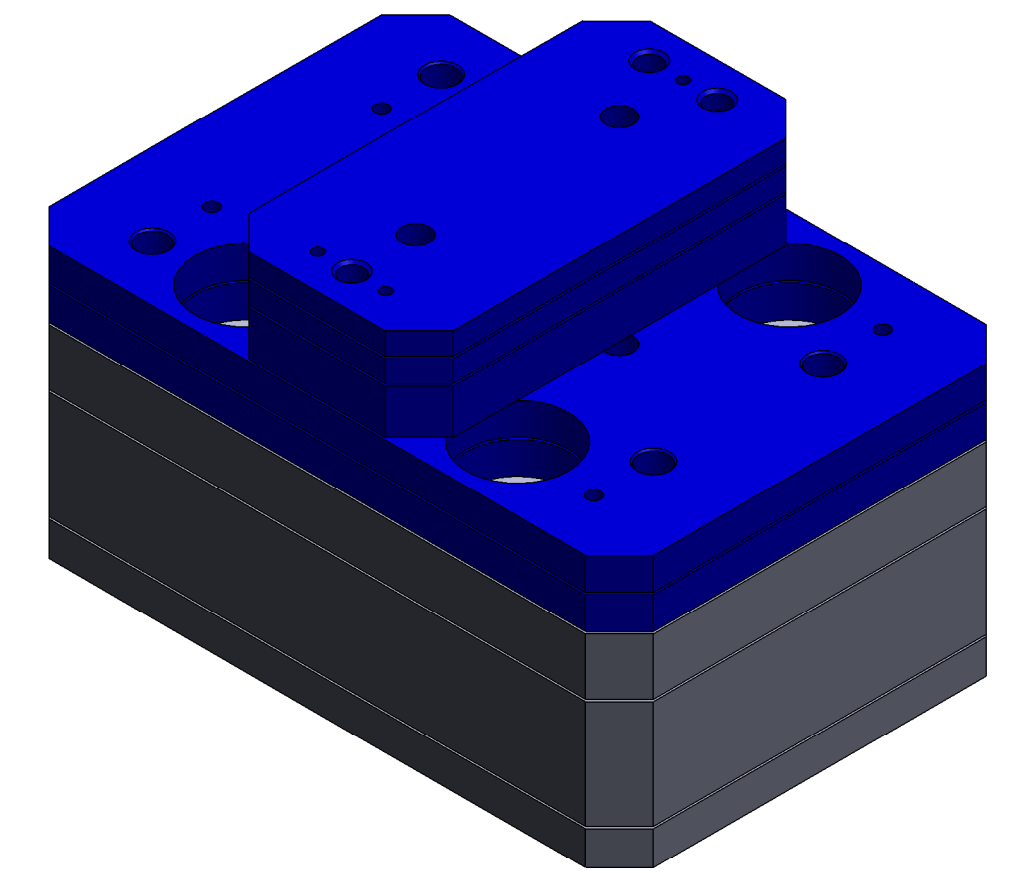
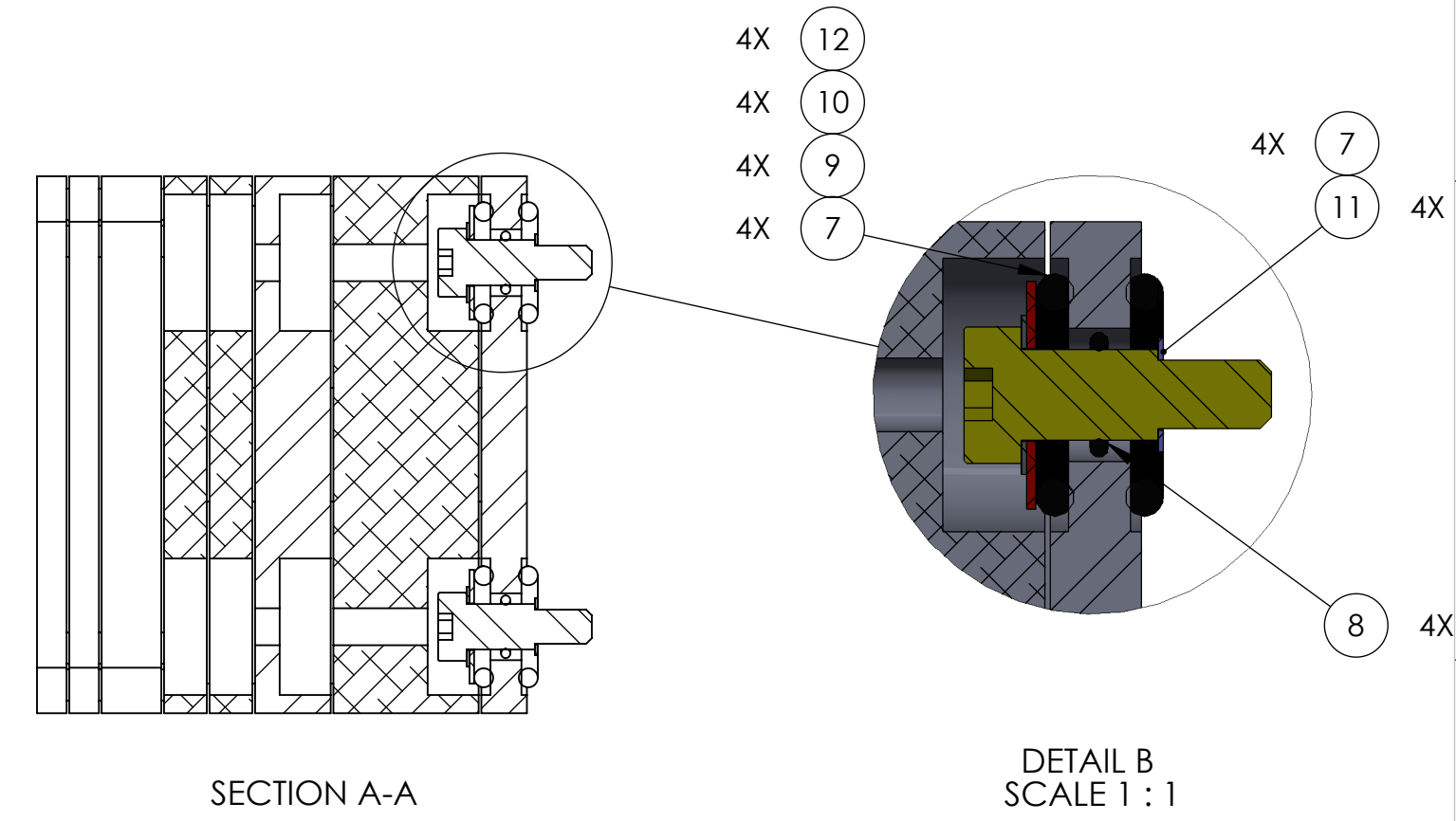


ISO VIEW

-21.6 KG



REV.	DATE	DCN #	DRAWING TREE #
v1	07 DEC 2010	E1000758	E1000025
v2	12 NOV 2012	E1201010-x0	-



ISO VIEW

14	UCC_C-1006-NA	SCREW SHCS 10-32 X 3/8 AG PLATED	9	9	9	9	9
13	UCC_C-2008-NA	SHCS, 1/4-20 x .50 AG PLATED	8	12	16	20	24
12	McMASTER_90298A710	SHOULDER SCREW 1/2 dia x .75 lg w/ 3/8-16 thd	4	4	4	4	4
11	UC_COMPONENTS_WFV-38	Washer Vented, .39 ID X .63 OD X .032 THK #3/8"	4	4	4	4	4
10	UC_COMPONENTS_WFV-50	Vented Washer, .515 ID X .87 OD X .032 THK #1/2"	4	4	4	4	4
9	BOKER FLAT WASHER	WASHER 1.25 OD X .508 ID X .048-.062 THK	4	4	4	4	4
8	McMASTER_1201T48	O-RING 11/16 OD X 1/2 ID (AS568A-112)	4	4	4	4	4
7	McMaster-1201T927	O-RING .875 ID 1.312 OD (AS568A-317)	8	8	8	8	8
6	D1003123	TRIM MASS ISOLATION MOUNT PLATE aLIGO BSC-ISI	1	1	1	1	1
5	D1003168	TRIM MASS .25 KG, aLIGO BSC-ISI	2	2	2	2	2
4	D1003166	TRIM MASS 1 KG, aLIGO BSC-ISI	-	1	2	3	4
3	D1003167	TRIM MASS .5 KG, aLIGO BSC-ISI	1	1	1	1	1
2	D1003164	TRIM MASS 5 KG, aLIGO BSC-ISI	1	1	1	1	1
1	D1003163	TRIM MASS 10 KG, aLIGO BSC-ISI	1	1	1	1	1
ITEM NO.	PART NUMBER	DESCRIPTION	Mass 19.6 Kg QTY.	Mass 20.6 Kg QTY.	Mass 21.6 Kg QTY.	Mass 22.6 Kg QTY.	Mass 23.6 Kg QTY.

NOTES:

- VENDOR REFERENCES ARE PROVIDED AS EXAMPLES OF PARTS MEETING ALL REQUIRED SPECIFICATIONS. EQUIVALENTS ARE ALWAYS ACCEPTABLE UNLESS OTHERWISE SPECIFIED.
- REFER TO LIGO E0900357 FOR ASSEMBLY AND LOADING PROCEDURE.
- QUANTITIES WILL VARY DEPENDING ON AMOUNT OF WEIGHT REQUIRED.

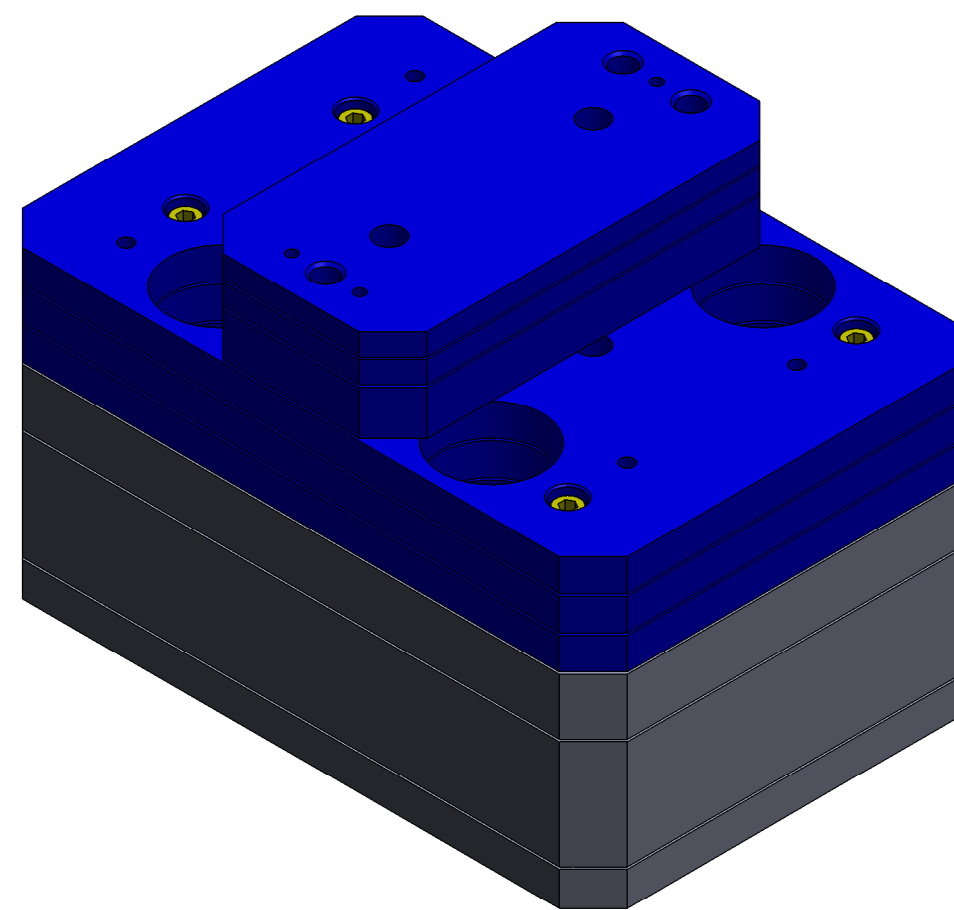
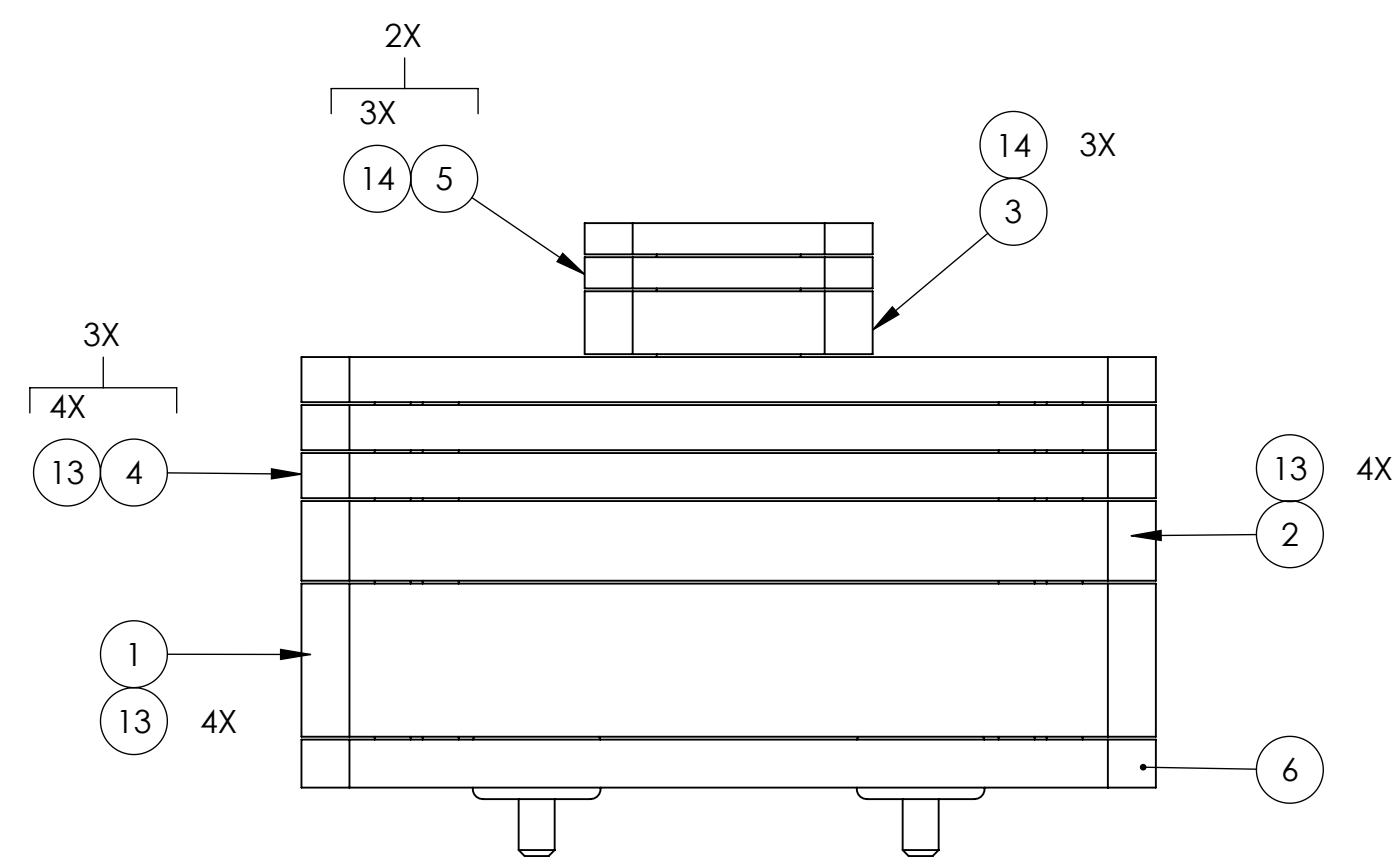
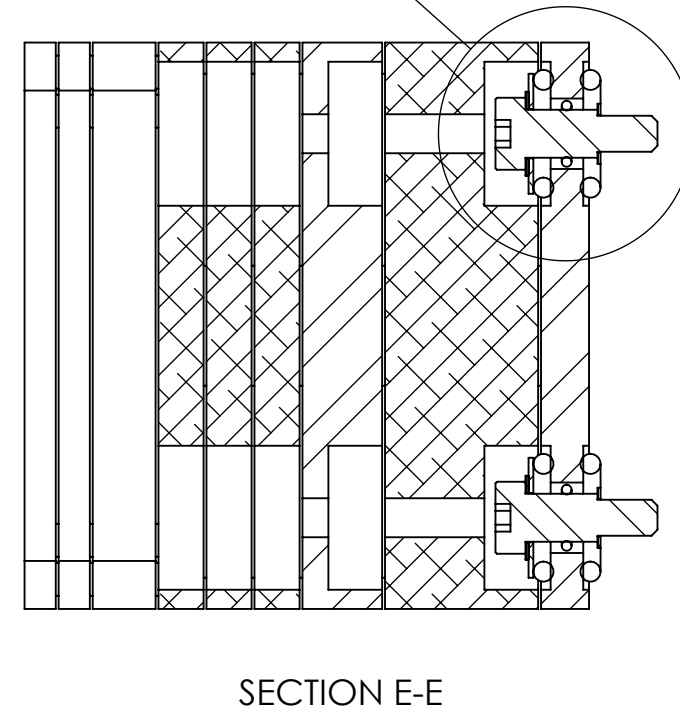
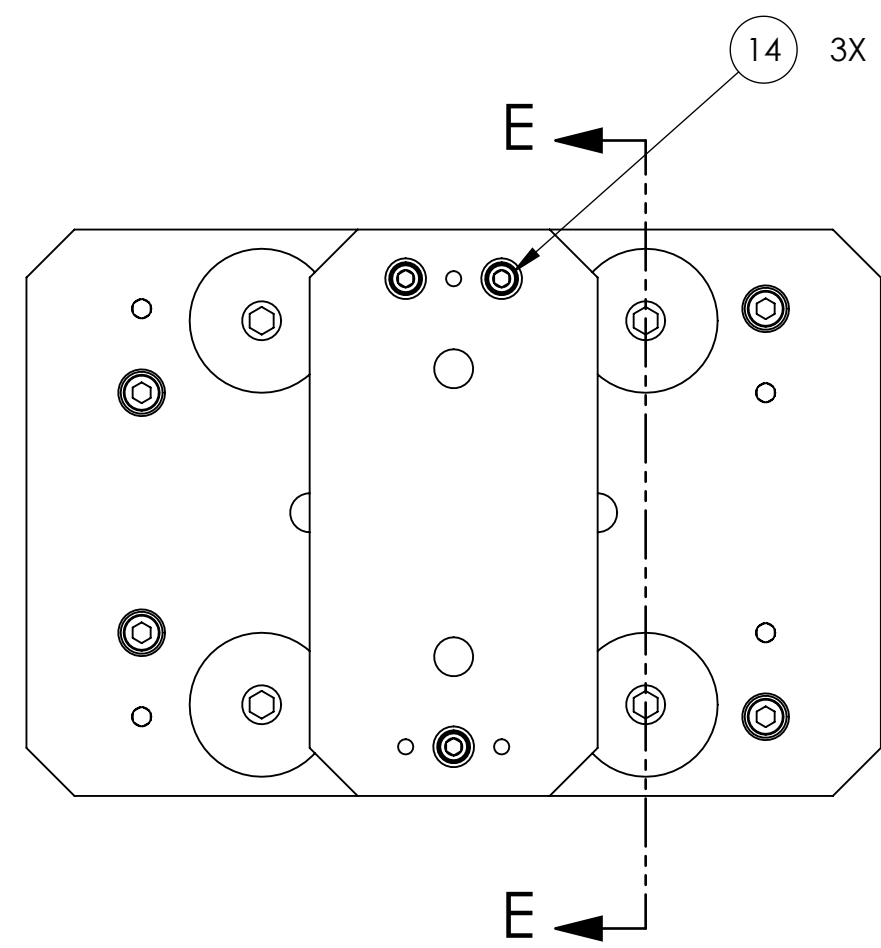
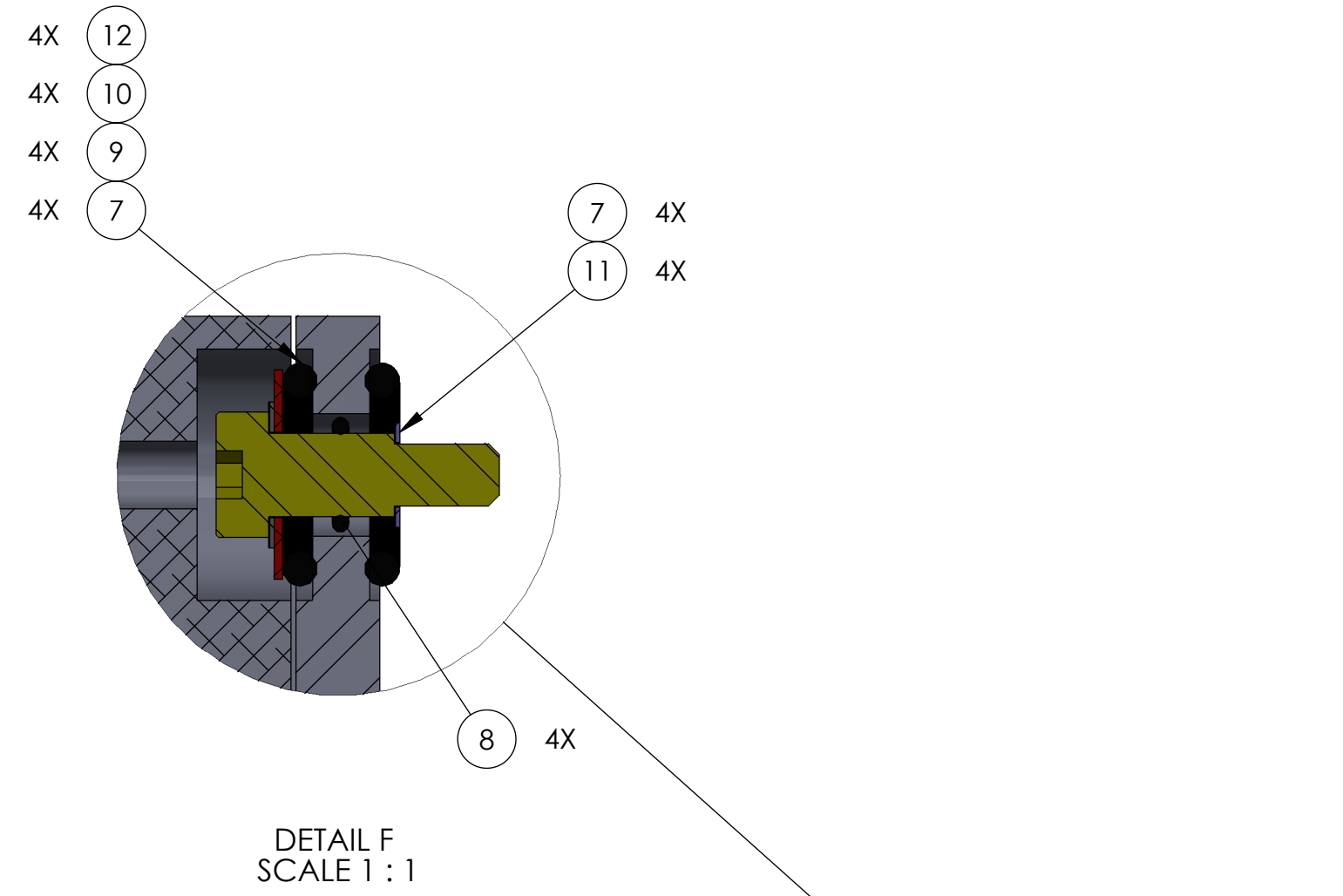
NOTES AND TOLERANCES: (UNLESS OTHERWISE SPECIFIED)

MATERIAL		FINISH		NEXT ASSY		CALIFORNIA INSTITUTE OF TECHNOLOGY MASSACHUSETTS INSTITUTE OF TECHNOLOGY		PART NAME TRIM MASS AND DAMPING ASSY, aLIGO BSC-ISI	
N/A		N/A μinch		D0901182		SYSTEM ADVANCED LIGO		SUB-SYSTEM SEI	
						DESIGNER M.HILLARD 01 Dec. 2010		SIZE D	
						DRAFTER M.HILLARD 07 Dec. 2010		DWG. NO. D1003161	
						CHECKER F.MATCHARD 07 Dec. 2010		REV. v2	
						APPROVAL K.MASON 07 Dec. 2010		SCALE: 1:2 PROJECTION:	
						SHEET 1 OF 2			

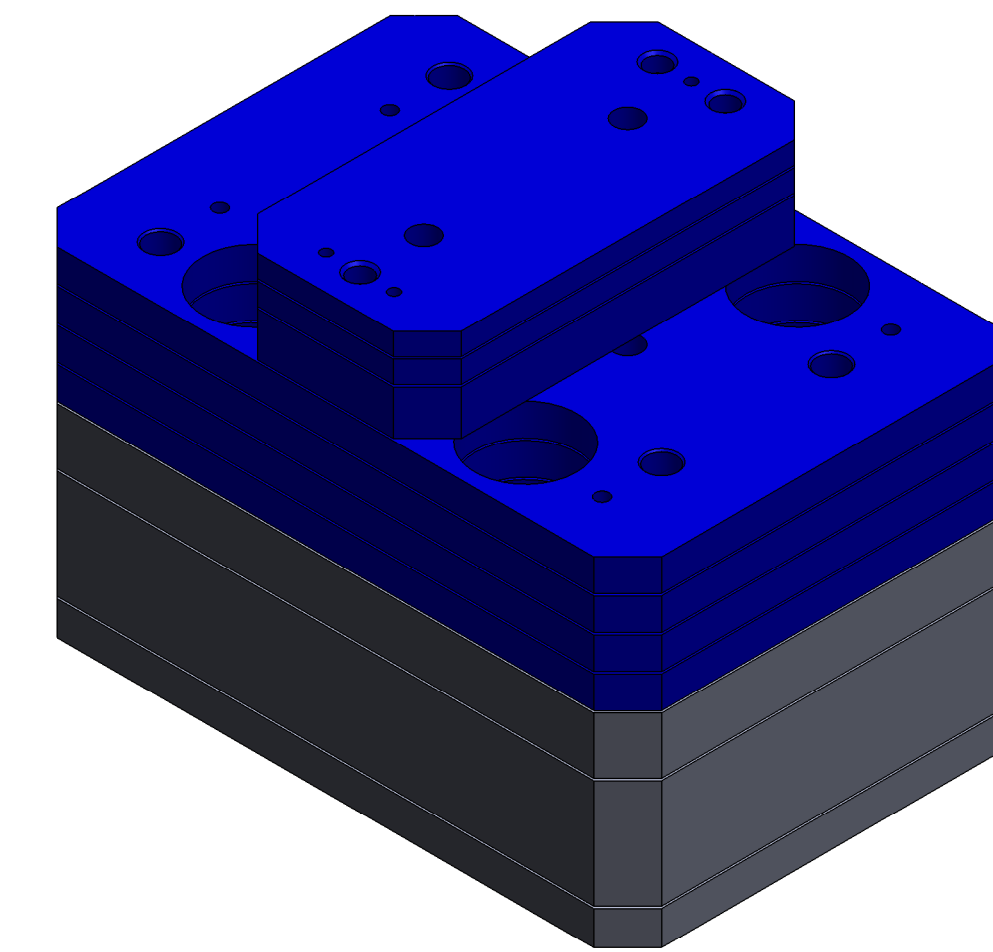
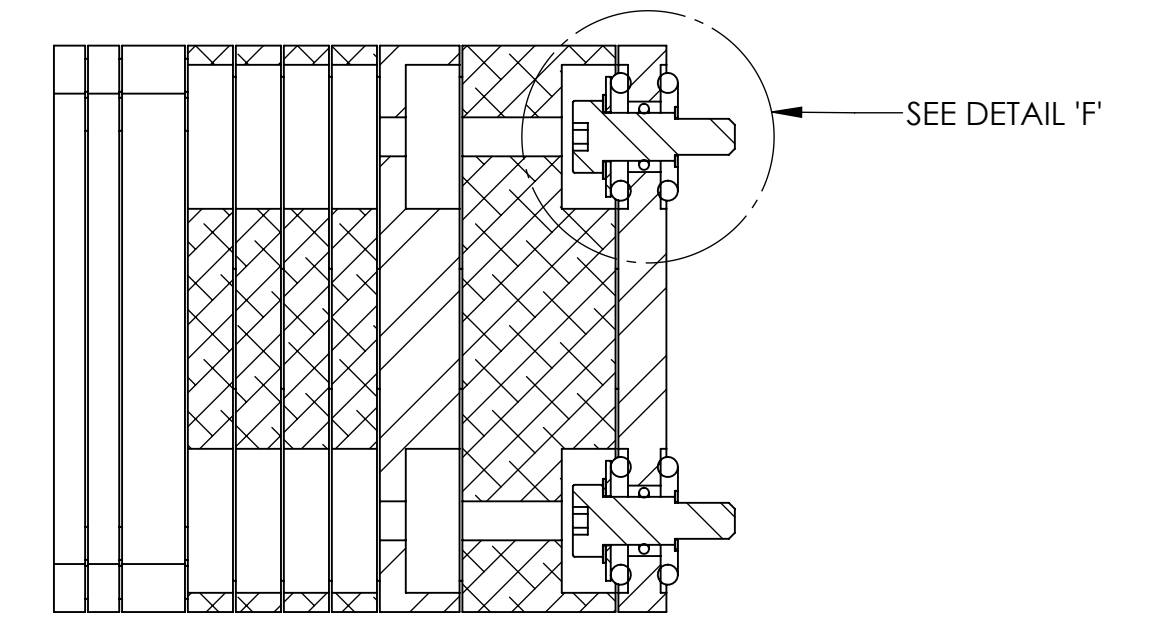
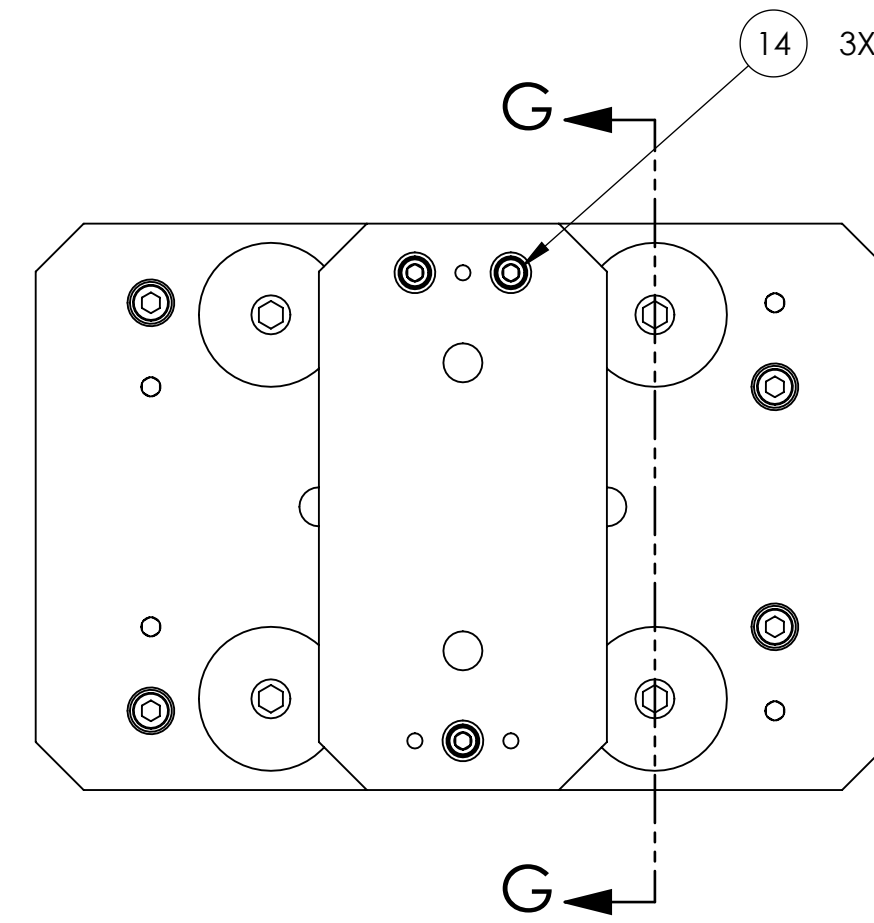
D1003161 TRIM MASS AND DAMPING ASSY, aLIGO BSC-ISI, PART PDM REV. X-034, DRAWING PDM REV. X-004

-22.6 KG

-23.6 KG



ISO VIEW



ISO VIEW

ITEM NO.	PART NUMBER	DESCRIPTION	MATERIAL	QTY.	QTY.
14	UCC_C-1006-NA	SCREW SHCS 10-32 X 3/8 AG PLATED	18-8 SSSL	9	9
13	UCC_C-2008-NA	SHCS, 1/4-20 x .50 AG PLATED	18-8 SSSL	17	18
12	McMASTER_90298A710	SHOULDER SCREW 1/2 dia x .75 lg w/ 3/8-16 thd	18-8 SSSL	4	4
11	UC_COMPONENTS_WFV-38	Washer Vented, .39 ID X .63 OD X .032 THK #3/8"	18-8 SS	4	4
10	UC_COMPONENTS_WFV-50	Vented Washer, .515 ID X .87 OD X .032 THK #1/2"	18-8 SS	4	4
9	BOKER FLAT WASHER	WASHER 1.25 OD X .508 ID X .048-.062 THK	302 SSSL	4	4
8	McMASTER_1201T48	O-RING 11/16 OD X 1/2 ID (AS568A-112)	FLUROELASTOMER	4	4
7	McMaster-1201T927	O-RING .875 ID 1.312 OD (AS568A-317)	FLUROELASTOMER	8	8
6	D1003123	TRIM MASS ISOLATION MOUNT PLATE aLIGO BSC-ISI	AISI 304	1	1
5	D1003168	TRIM MASS .25 KG, aLIGO BSC ISI	6061-T6 Al	2	2
4	D1003166	TRIM MASS 1 KG, aLIGO BSC-ISI	6061-T6 Al	3	4
3	D1003167	TRIM MASS .5 KG, aLIGO BSC ISI	6061-T6 Al	1	1
2	D1003164	TRIM MASS 5 KG, aLIGO BSC-ISI	AISI 304	1	1
1	D1003163	TRIM MASS 10 KG, aLIGO BSC-ISI	304 SSSL	1	1
				Mass 22.6 Kg	Mass 23.6 Kg
				QTY.	QTY.

LIGO CALIFORNIA INSTITUTE OF TECHNOLOGY
 MASSACHUSETTS INSTITUTE OF TECHNOLOGY

SIZE DWG. NO. **D1003161** REV. **v2**

SCALE: 1:2 PROJECTION: SHEET 2 OF 2

D1003161 TRIM MASS AND DAMPING ASSY. aLIGO BSC-ISI PART PDM REV. X-034 DRAWING PDM REV. X-004