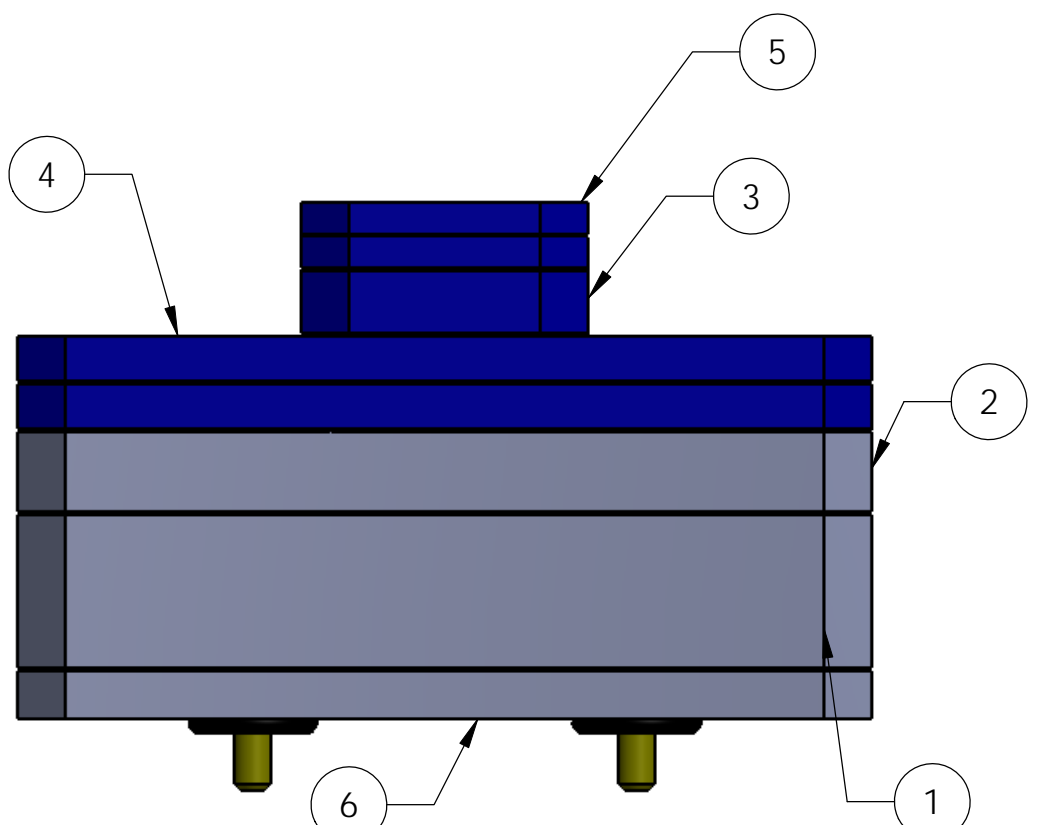
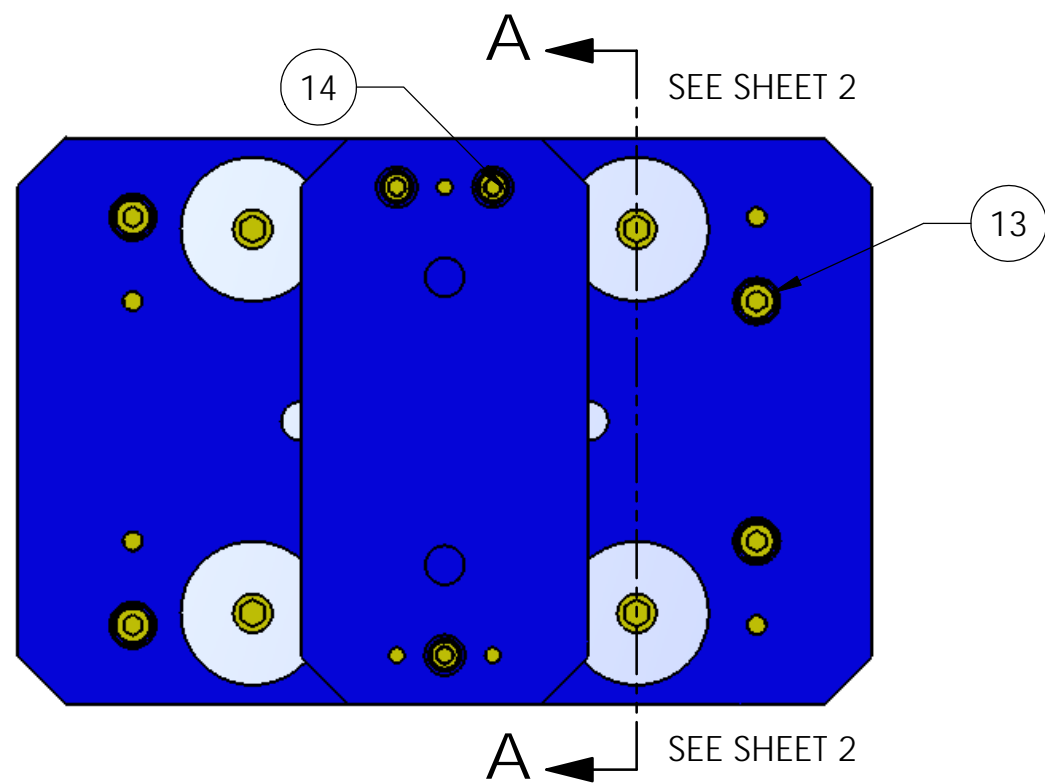


REV.	DATE	DCN #	DRAWING TREE #
v1	07 Dec. 2010	E1000758	E1000025



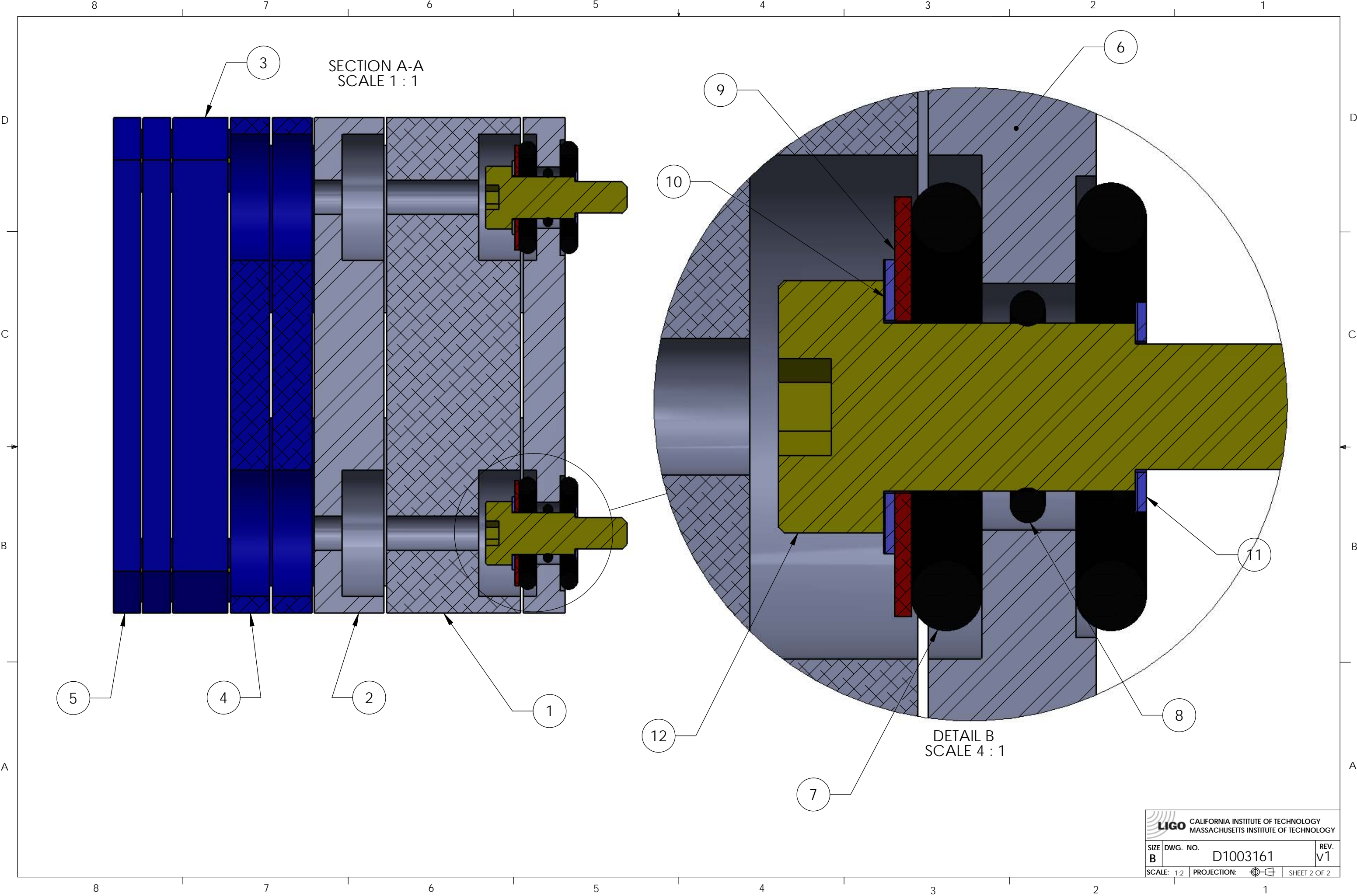
14	UCC_C-1006-NA	SCREW SHCS 10-32 X 3/8 AG PLATED	18-8 SSTL	9
13	UCC_C-2008-NA	SHCS, 1/4-20 x .50 AG PLATED	18-8 SSTL	16
12	McMASTER_90298A710	SHOULDER SCREW 1/2 dia x .75 lg w/ 3/8-16 thd	18-8 SSTL	4
11	UC_COMPONENTS_WFV-38	Washer Vented, .39 ID X .63 OD X .032 THK #3/8"	18-8 SS	4
10	UC_COMPONENTS_WFV-50	Vented Washer, .515 ID X .87 OD X .032 THK #1/2"	18-8 SS	4
9	BOKER FLAT WASHER	WASHER 1.25 OD X .508 ID X .048-.062 THK	302 SSTL	4
8	McMASTER_1201T48	O-RING 11/16 OD X 1/2 ID (AS568A-112)	FLUROELASTOMER	4
7	McMaster-1201T927	O-RING .875 ID 1.312 OD (AS568A-317)	FLUROELASTOMER	8
6	D1003123	TRIM MASS ISOLATION MOUNT PLATE aLIGO BSC-ISI	AISI 304	1
5	D1003168	TRIM MASS .25 KG, aLIGO BSC ISI	6061-T6 Al	2
4	D1003166	TRIM MASS 1 KG, aLIGO BSC-ISI	6061-T6 Al	2
3	D1003167	TRIM MASS .5 KG, aLIGO BSC ISI	6061-T6 Al	1
2	D1003164	TRIM MASS 5 KG, aLIGO BSC-ISI	AISI 304	1
1	D1003163	TRIM MASS 10 KG, aLIGO BSC-ISI	304 SSTL	1
ITEM NO.	PART NUMBER	DESCRIPTION	MATERIAL	QTY

NOTES CONTINUED:
 4. VENDOR REFERENCES ARE PROVIDED AS EXAMPLES OF PARTS MEETING ALL REQUIRED SPECIFICATIONS. EQUIVALENTS ARE ALWAYS ACCEPTABLE UNLESS OTHERWISE SPECIFIED.
 5. REFER TO LIGO E0900357 FOR ASSEMBLY AND LOADING PROCEDURE.
 6. QUANTITIES WILL VARY DEPENDING ON AMOUNT OF WEIGHT REQUIRED.

DIMENSIONS ARE IN N/A		NOTES AND TOLERANCES: (UNLESS OTHERWISE SPECIFIED)		LIGO CALIFORNIA INSTITUTE OF TECHNOLOGY MASSACHUSETTS INSTITUTE OF TECHNOLOGY		PART NAME	
TOLERANCES: .XX ± N/A .XXX ± N/A		1. INTERPRET DRAWING PER ASME Y14.5-1994. 2. REMOVE ALL SHARP EDGES, .03 x 45°. 3. DO NOT SCALE FROM DRAWING.		ADVANCED LIGO		TRIM MASS AND DAMPING ASSY, aLIGO BSC-ISI	
ANGULAR ± N/A*		MATERIAL N/A FINISH N/A μinch		NEXT ASSY D0901182		DESIGNER M.HILLARD 01 Dec. 2010	
						DRAFTER M.HILLARD 07 Dec. 2010	
						CHECKER F.MATICHARD 07 Dec. 2010	
						APPROVAL K.MASON 07 Dec. 2010	
						SIZE DWG. NO. B D1003161	
						REVISIONS v1	
						SCALE: 1:2 PROJECTION: SHEET 1 OF 2	

D1003161 TRIM MASS AND DAMPING ASSY, aLIGO BSC-ISI, PART PDM REV: X-004, DRAWING PDM REV: X-004

D1003161 TRIM MASS AND DAMPING ASSY. aLIGO BSC-ISI, PART PDM REV: X-004, DRAWING PDM REV: X-004



LIGO CALIFORNIA INSTITUTE OF TECHNOLOGY MASSACHUSETTS INSTITUTE OF TECHNOLOGY	
SIZE B	DWG. NO. D1003161
SCALE: 1:2	PROJECTION:
REV. V1	SHEET 2 OF 2