

INITIATOR BW

DATE 1-13-99

**ENGINEERING CHANGE REQUEST (ECR)**

NEXT ASSEMBLY NO. D 972 397

CUSTOMER DRAWING NO. D 972 475

DRAWING TITLE B9C BELLOW REMOVAL YOKE BAR

REVISION: FROM A TO B



**HYTEC**  
INCORPORATED

**DESCRIPTION OF CHANGE (Simple Phrase. Identify Dims if Possible):**

CHANGE TO 16.00 LONG, WITH  $\phi$ .25 HOLE .38" IN FROM  
EACH END (FOR COTTER PIN)  
(ELIMINATE THREADS)

**REASONS FOR CHANGE:**

CUSTOMER REQUEST.

**IDENTIFY OTHER PARTS/GROUPS THAT INTERFACE WITH THE ABOVE (Required):**

INTERFACE	RESPONSIBLE PARTY	INITIAL

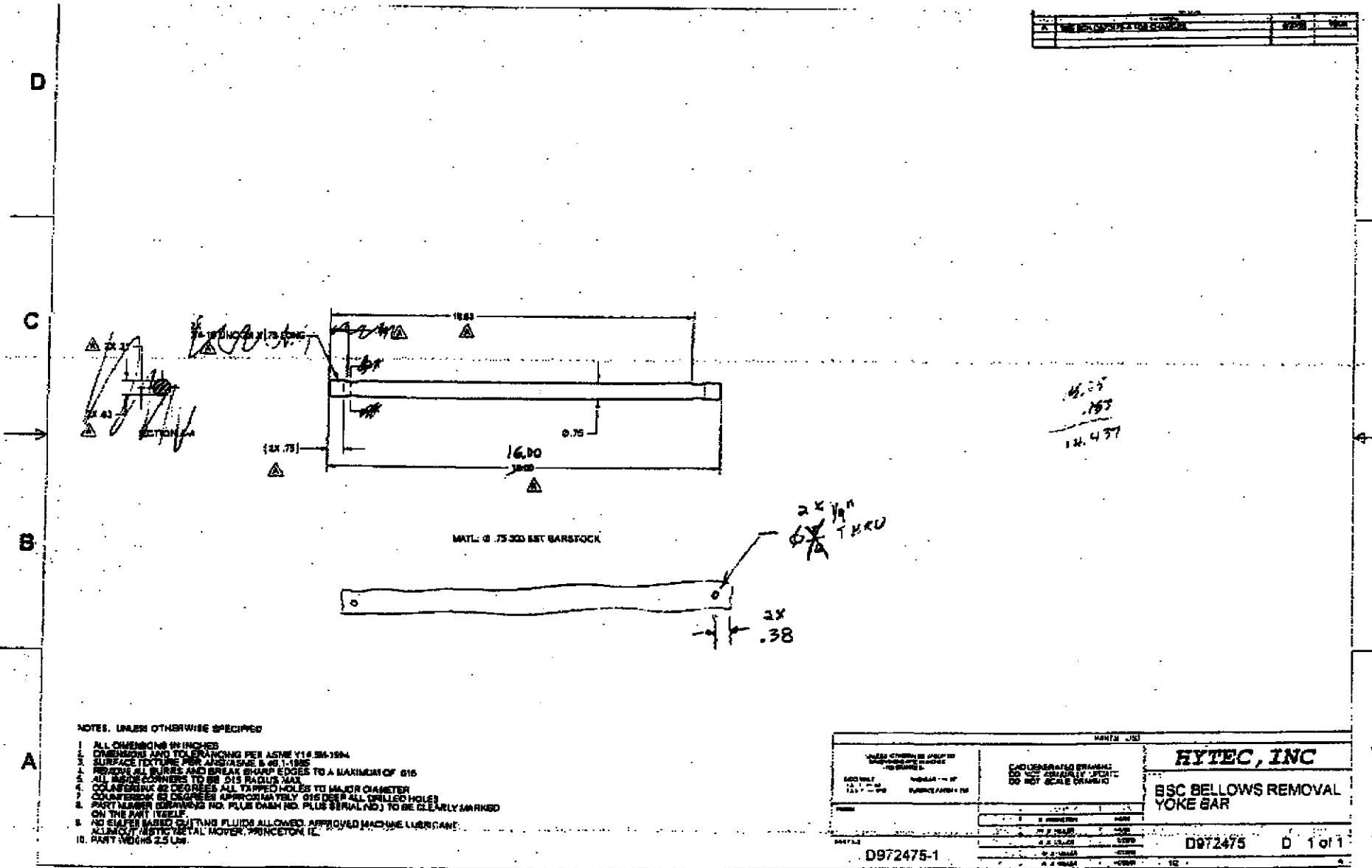
NOTIFY COGNIZANT DESIGNER: BILL K

NOTIFY COGNIZANT ENGINEER: J<sup>2</sup>

APPROVED: TMS

972 475  
1 of 2

DATE	BY	CHKD	APPD



16.00  
0.38  
16.00

2x 1/8" THRU

2x .38

MATL: 0.7530 BSC BARSTOCK

NOTES: UNLESS OTHERWISE SPECIFIED

1. ALL DIMENSIONS IN INCHES
2. DIMENSIONS AND TOLERANCING PER ASME Y14.5M-1994
3. SURFACE TEXTURE PER AMS/ASME B 46.1-1995
4. REMOVE ALL BURRS AND BREAK SHARP EDGES TO A MAXIMUM OF .015
5. ALL RADIUS CORNERS TO BE .015 RADIUS MAX
6. COLLETS AND CHAMFERS ALL TAPPED HOLES TO MAJOR DIAMETER
7. CHAMFERED 60 DEGREES APPROXIMATELY .015 DEEP ALL DRILLED HOLES
8. PART NUMBER (DRAWING NO. PLUS CHAM NO. PLUS SERIAL NO.) TO BE CLEARLY MARKED ON THE PART FEZELF.
9. NO OILS OR FLUIDS ALLOWED. APPROVED MACHINE LUBRICANT.
10. PART WEIGHS 2.5 LBS.

HYTEC, INC	
BSC BELLOWS REMOVAL YOKE BAR	
D972475-1	D 1 of 1

972475  
CFG