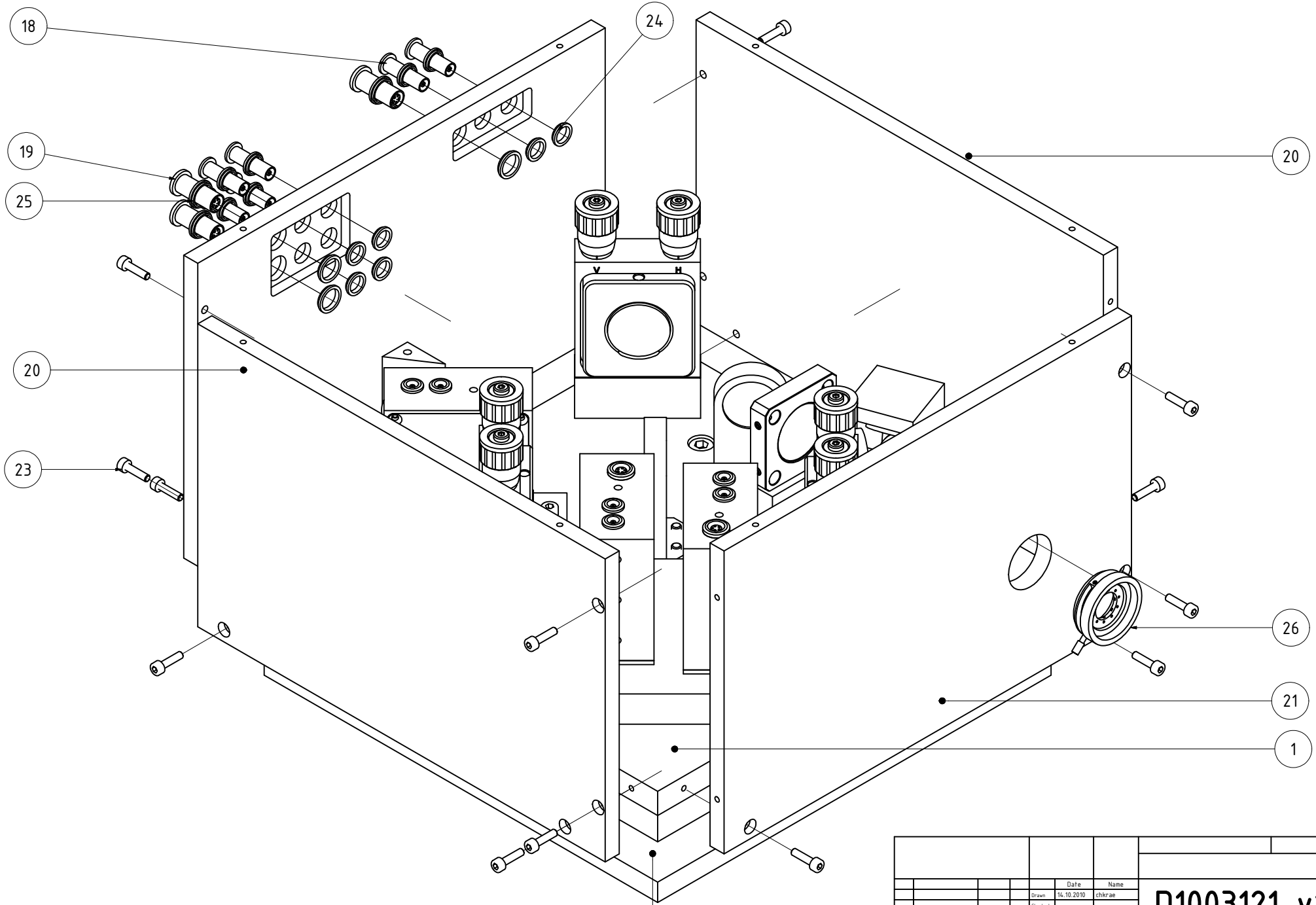


		Date	Name		
		Drawn	16.10.2010	chr	rae
		Checked			
		Standard			
				D1003121-v1	
				ISS-Box	
				1	
				A2	
State	Changes	Date	Name		

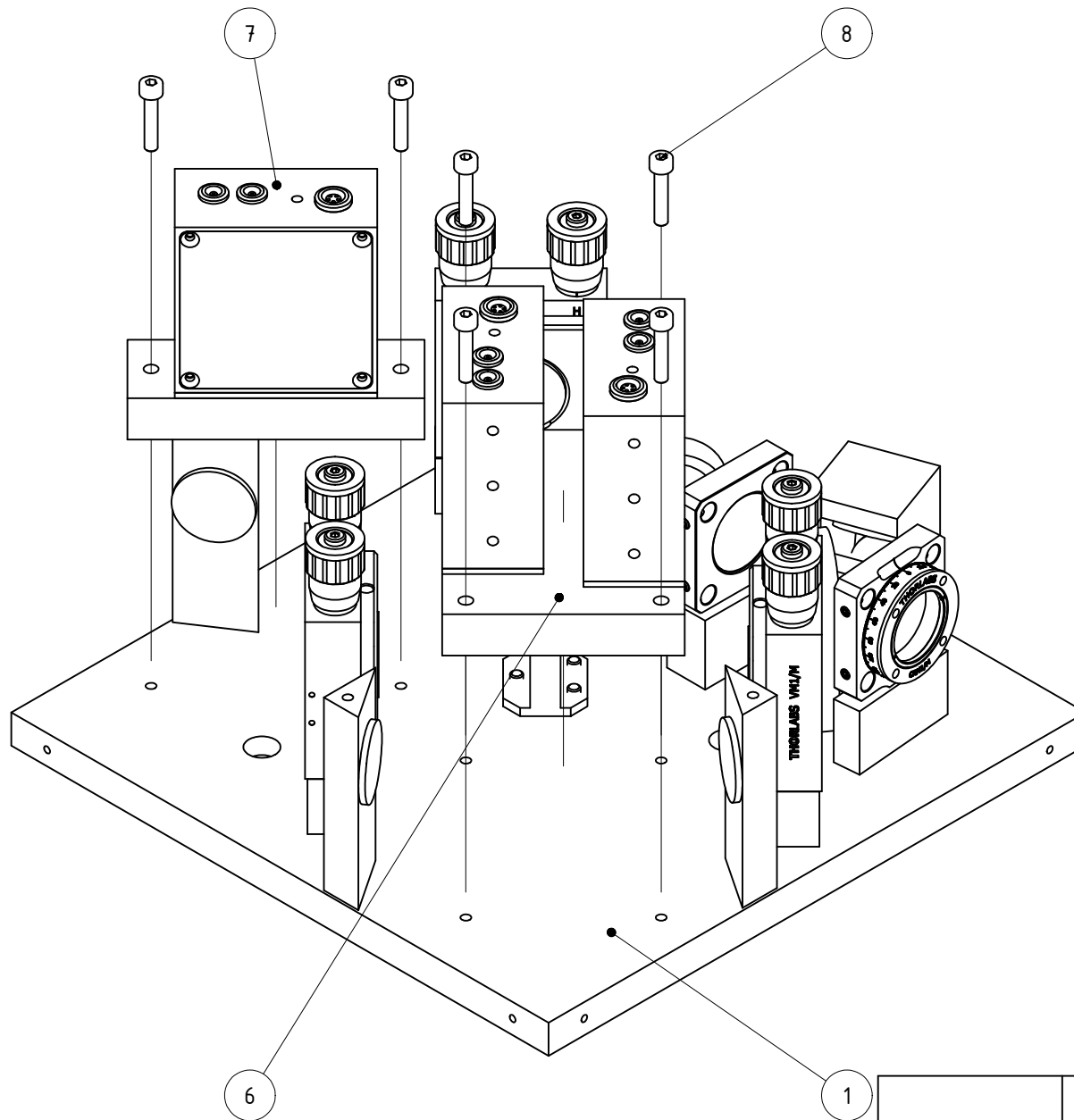
PARTS LIST			
ITEM	QTY	PART NUMBER	DESCRIPTION
1	1	BasePlate	Aluminium
2	1	Base	Aluminium
3	4	Bolt	Aluminium
4	24	ANSI B18.3.1M - M4x0,7 x 12	Forged Socket Head Cap Screw - Metric
5	3	ANSI B18.3.1M - M6x1 x 16	Forged Socket Head Cap Screw - Metric
6	1	PDs	see sheet 16
7	1	QPD	see sheet 17
8	6	ANSI B18.3.1M - M4x0,7 x 20	Forged Socket Head Cap Screw - Metric
9	2	BS	see sheet 18
10	1	TFP	see sheet 19
11	1	Lens	see sheet 20
12	1	lambda2	see sheet 21
13	3	Mirror	see sheet 22
14	1	brewster-dump_s-pol	see sheet 23
15	2	brewster-dump_p-pol_2	see sheet 24
16	1	brewster-dump_p-pol_1	see sheet 24
17	1	Wall with cable feedthrough	Aluminium
18	6	Lemo0b0_feedthrough	LEMO
19	3	Lemo0b5_feedthrough	LEMO
20	2	Wall	Aluminium
21	1	Wall with beam entrance	Aluminium
22	1	CoverPlate	Aluminium
23	24	ANSI B18.3.1M - M3x0,5 x 12	Forged Socket Head Cap Screw - Metric
24	12	Lemo0b0_isolation_ring	LEMO
25	6	Lemo0b5_isolation_ring	LEMO
26	1	SM1D12	Thorlabs
27	1	RG850-Filter	3mm thick 1' Optic in SM1L03 (Thorlabs)

Date		Name	
Drawn	16.10.2010	Checked	chkrae
Standard			
ISS-Box			2
			A2

D1003121-v1

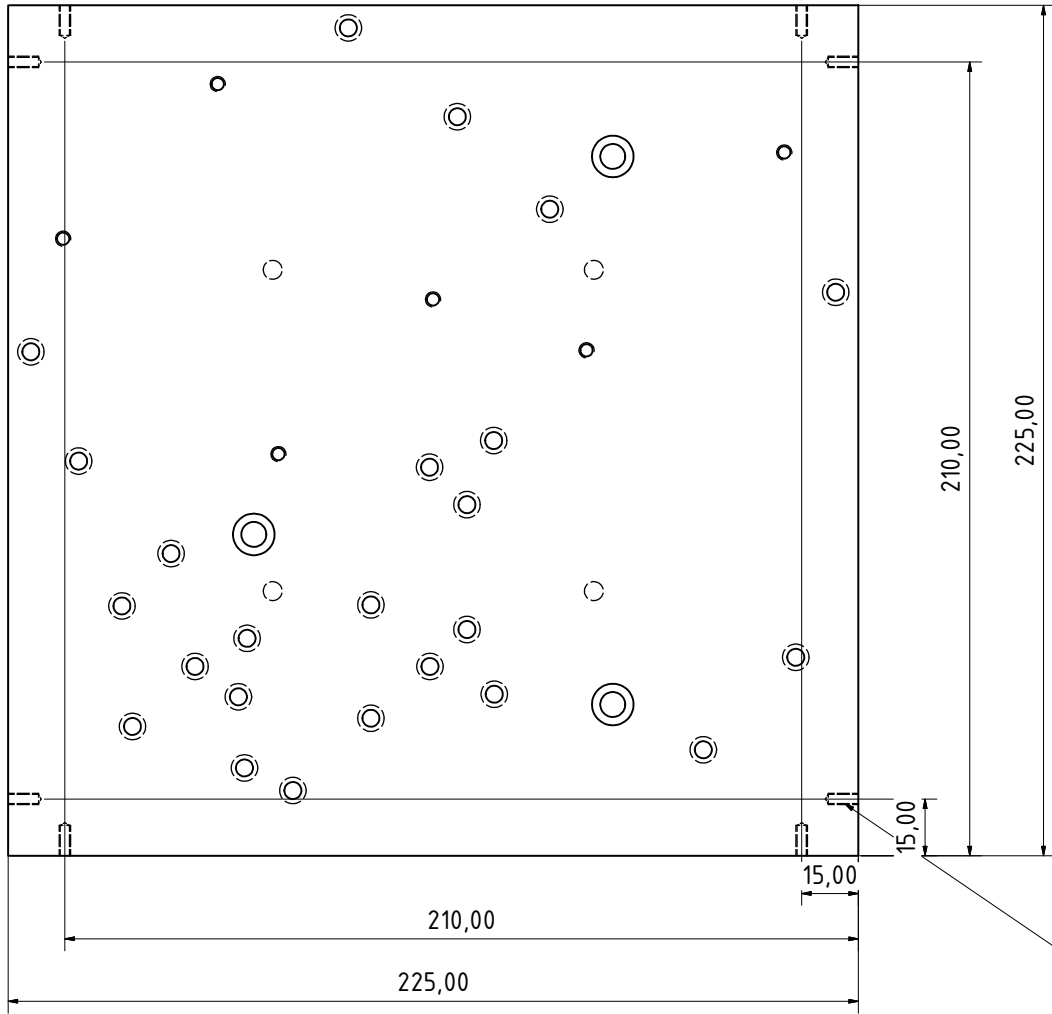


		Date	Name		
		Drawn	16.10.2010	chkrae	
		Checked			
		Standard			
				D1003121-v1	
				ISS-Box	
				4	
				A2	
State	Changes	Date	Name		

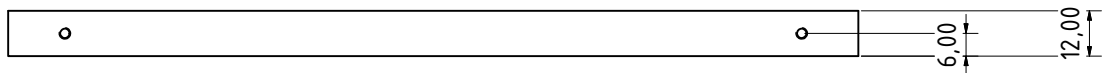


		Date	Name		
		Drawn	14.10.2010	chr/ae	
		Checked			
		Standard			
					D1003121-v1
		ISS-Box			6
					A2
State	Changes	Date	Name		

ITEM 1 Base Plate - 1st sheet

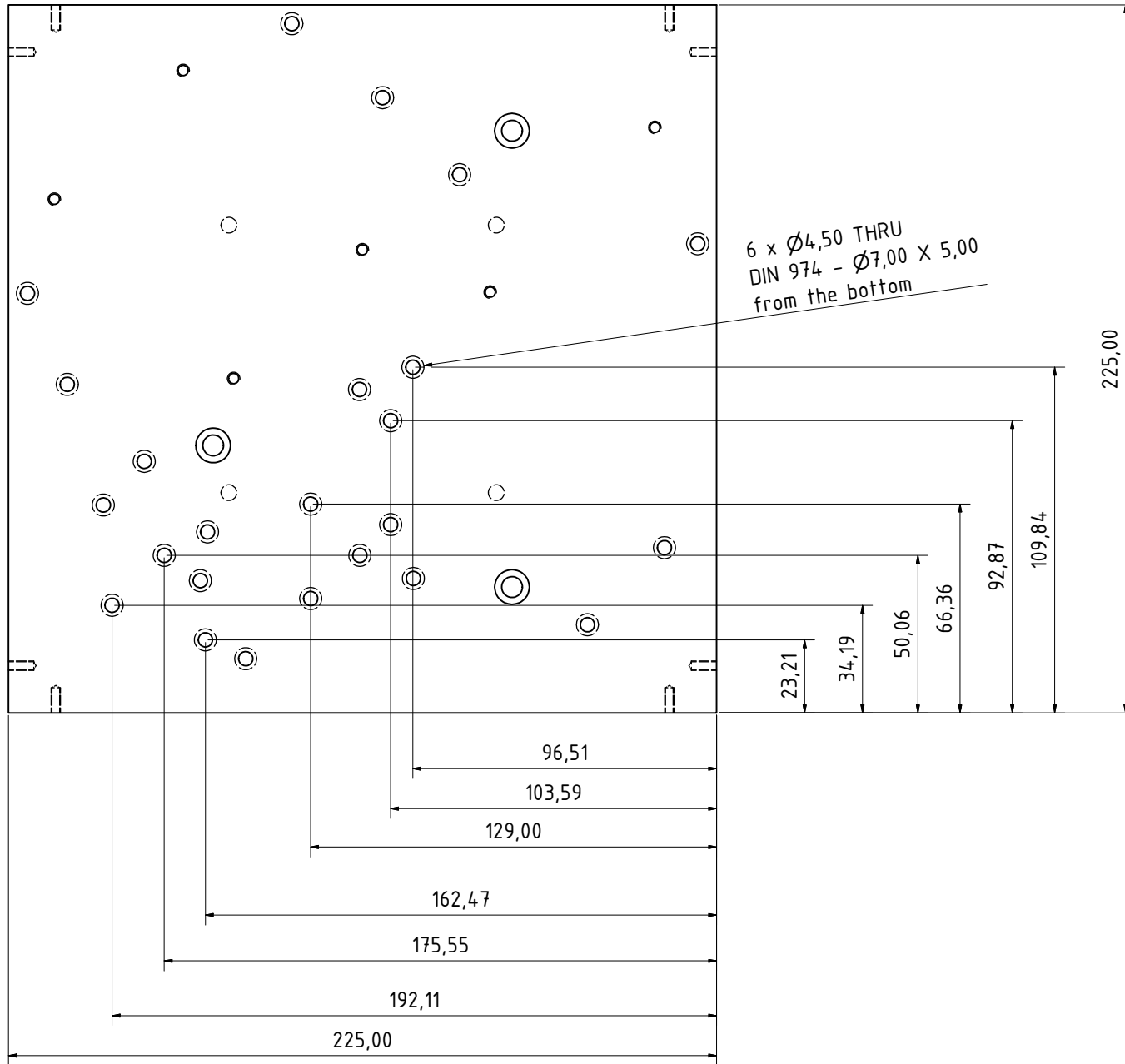


8 x M3x0.5 - 6H - 8,00 DEEP



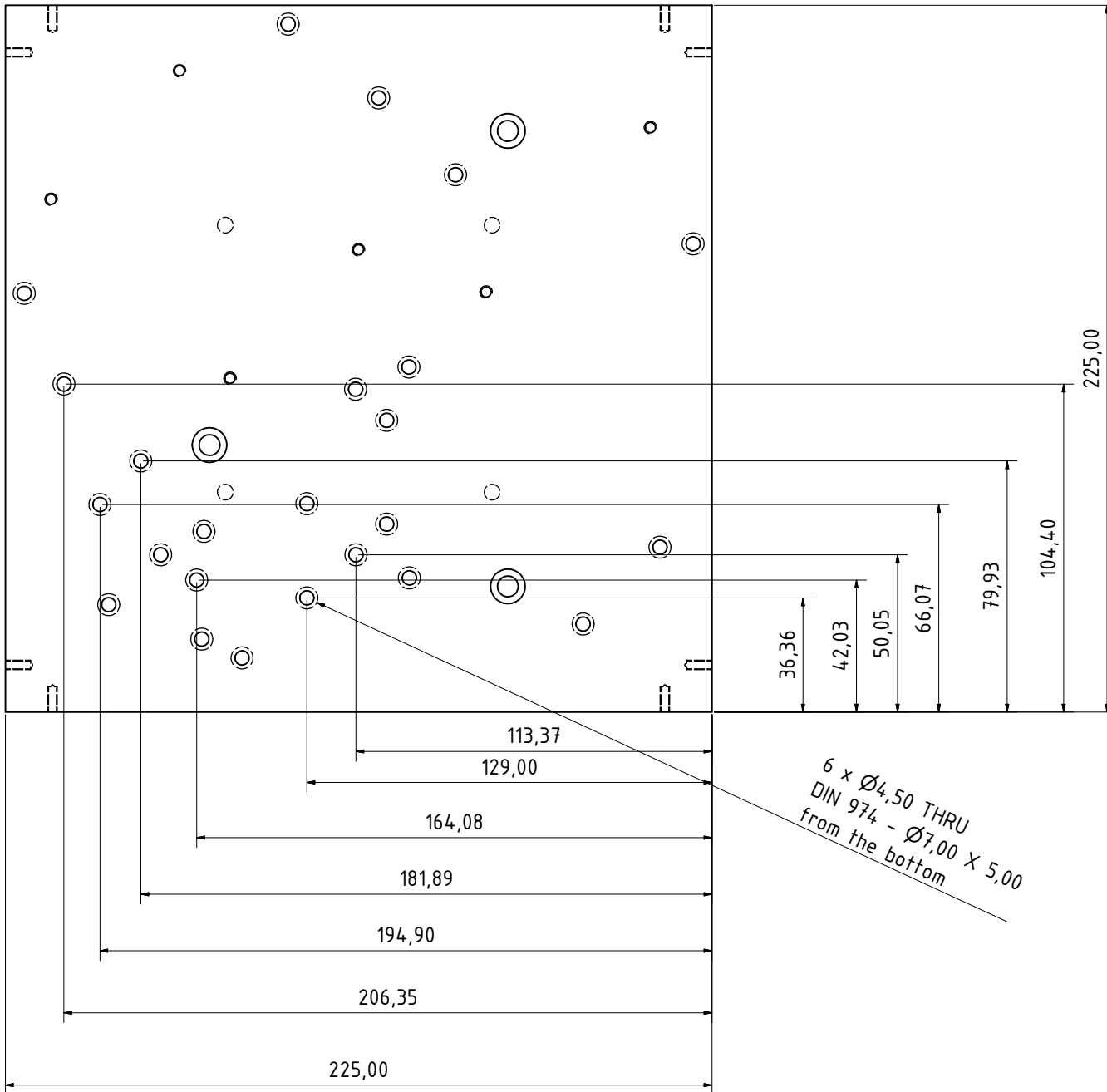
		Date	Name		
		Drawn	14.10.2010	chkrae	
		Checked			
		Standard			
				D1003121-v1	
				ISS-Box	
				9	
				A2	
State	Changes	Date	Name		

ITEM 1 Base Plate - 5th sheet



		Date	Name		
		Drawn	14.10.2010	chr/rae	
		Checked			
		Standard			
				D1003121-v1	
				ISS-Box	
				13	
				A2	
State	Changes	Date	Name		

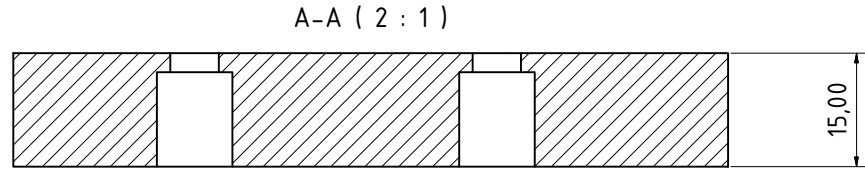
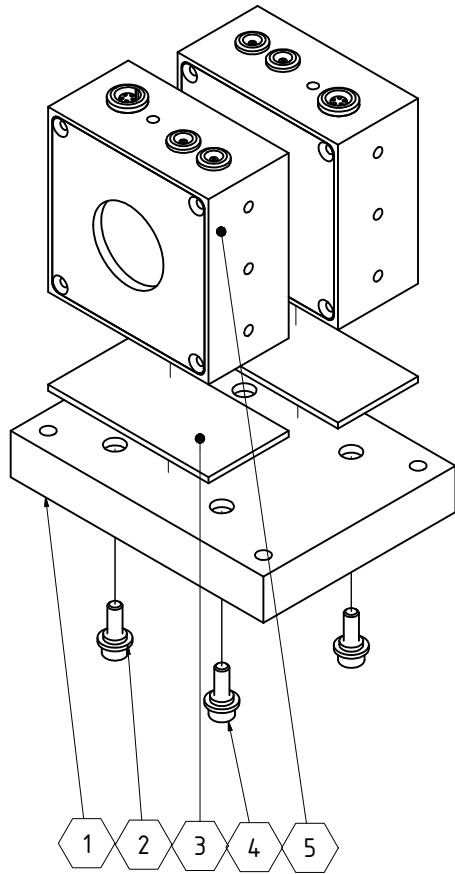
ITEM 1 Base Plate - 6th sheet



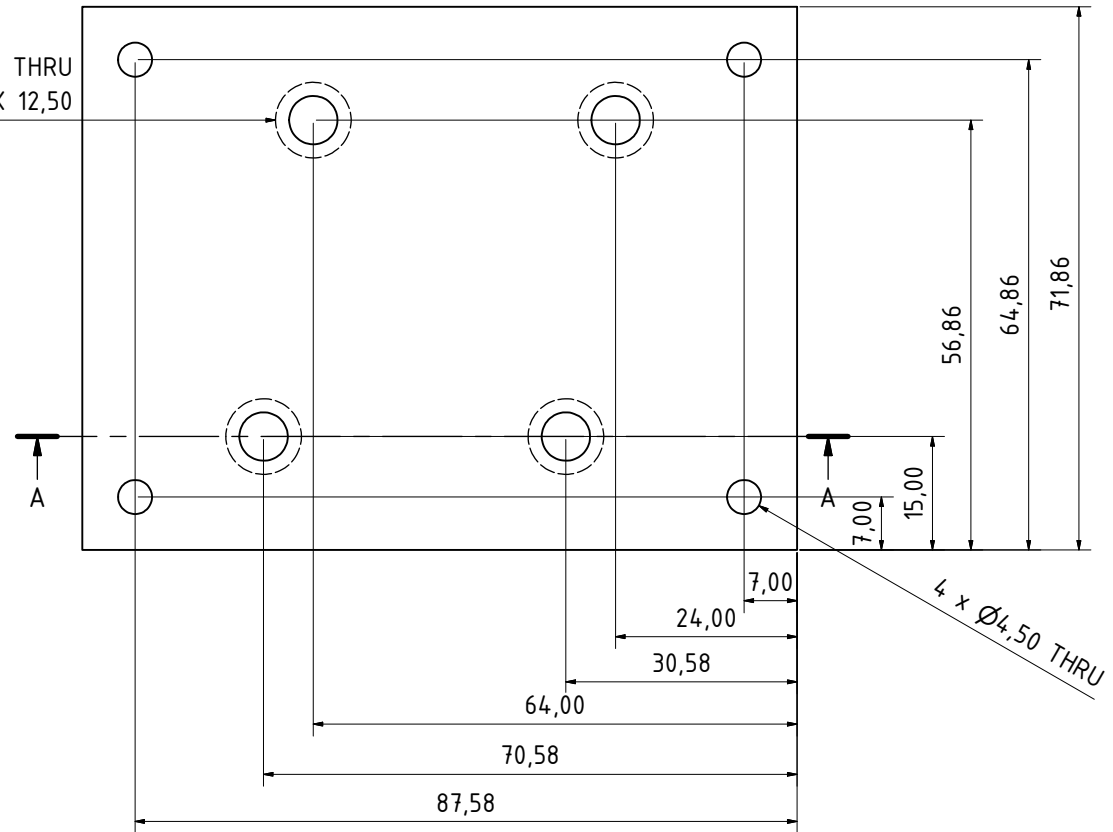
6 x Ø4,50 THRU
DIN 974 - Ø7,00 X 5,00
from the bottom

Drawn		Date		Name	
Checked		14.10.2010		chkræe	
Standard					
D1003121-v1					14
					A2
State	Changes	Date	Name		

ITEM 6 PDs



4 x Ø6,40 THRU
DIN 974 - Ø10,00 X 12,50

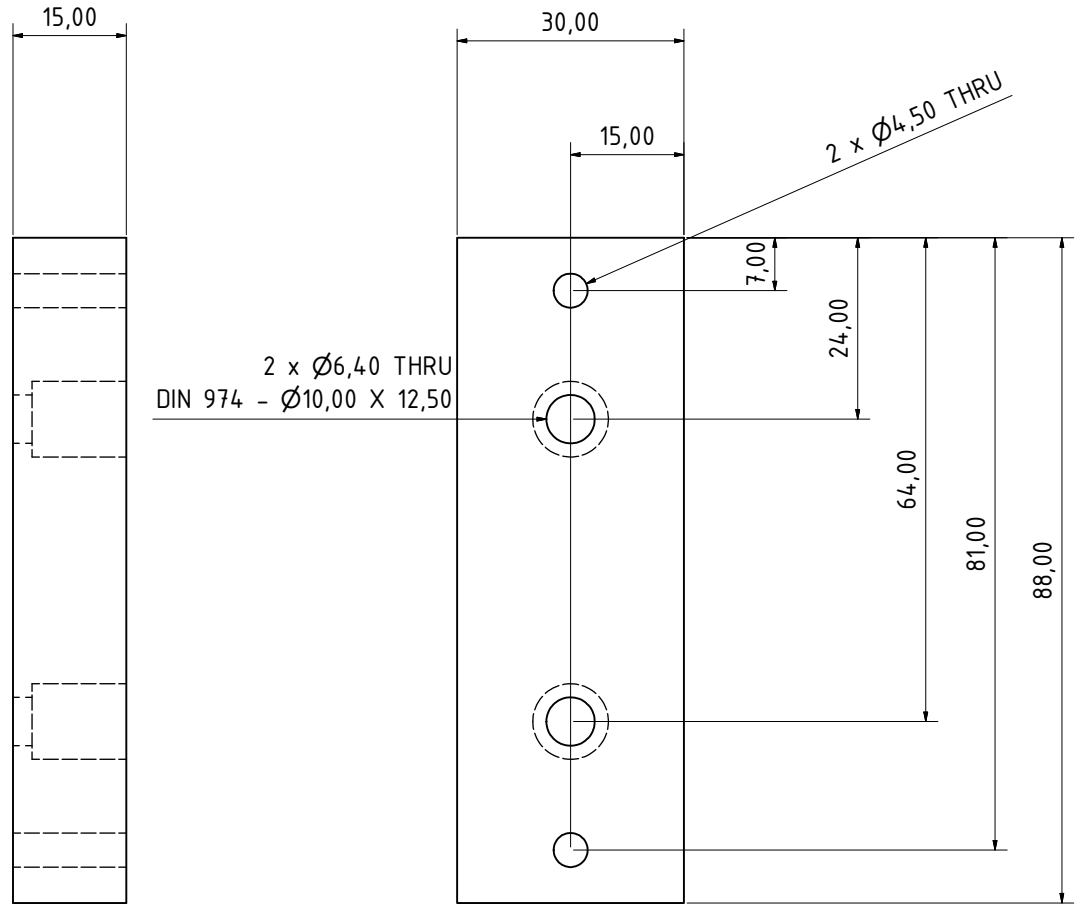
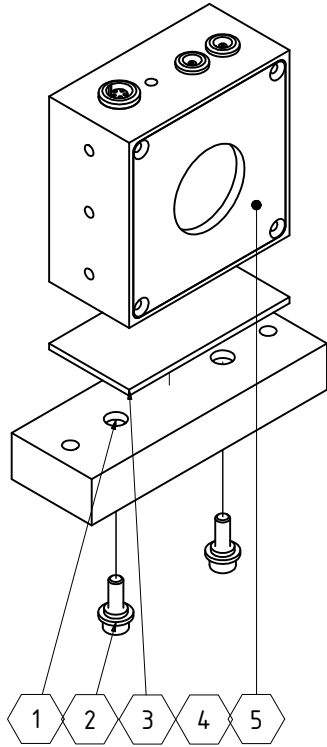


PARTS LIST			
ITEM	QTY	PART NUMBER	DESCRIPTION
1	1	Base_PDs	Aluminium
2	4	IB2	Conrad Electronics (Productnumber: 189111)
3	2	Iso_foil	Conrad Electronic (Productnumber: 189055-76)
4	4	ANSI B18.3.1M - M4x0,7 x 12	Forged Socket Head Cap Screw - Metric
5	2	PD_60x60	DCC-D1001998, DCC-D1101123

Date		Name	
Drawn	16.10.2010	Checked	chkrae
Checked		Standard	
ISS-Box			16
			A2

D1003121-v1

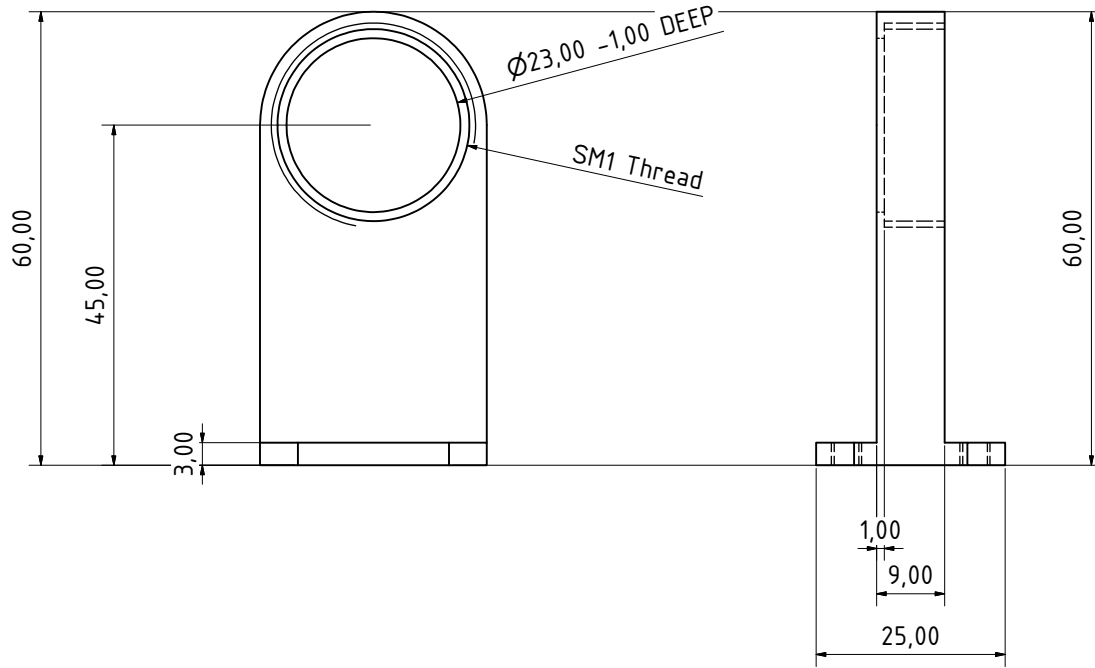
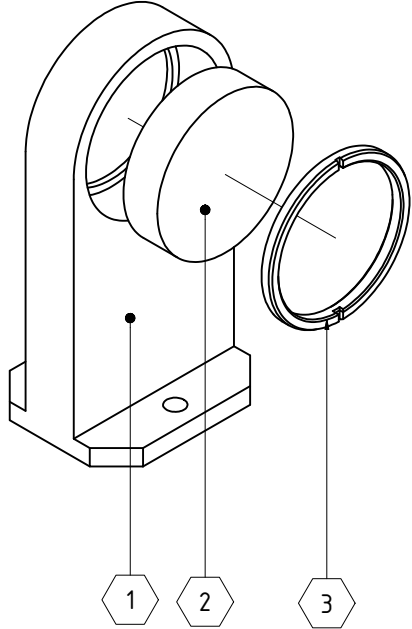
ITEM 7 QPD



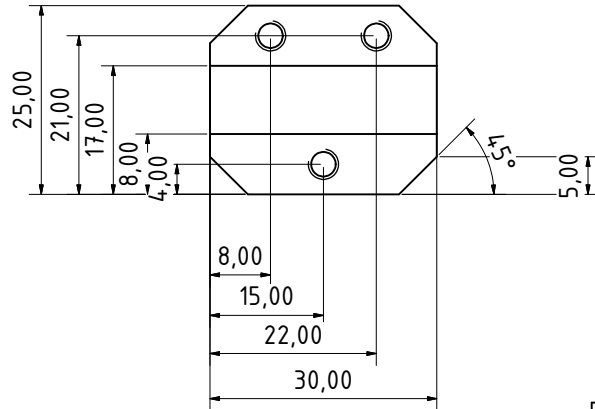
PARTS LIST			
ITEM	QTY	PART NUMBER	DESCRIPTION
1	1	Base_QPD	Aluminium
2	2	IB2	Conrad Electronics (Productnumber: 189111)
3	1	Iso_foil	Conrad Electronic (Productnumber: 189055-76)
4	2	ANSI B18.3.1M - M4x0,7 x 12	Forged Socket Head Cap Screw - Metric
5	1	PD_60x60	DCC-D1002280, DCC-D1101123

Drawn		Date		Name	
Checked		16.10.2010		chkrae	
Standard					
D1003121-v1					
ISS-Box					17
					A2

ITEM 9 BS



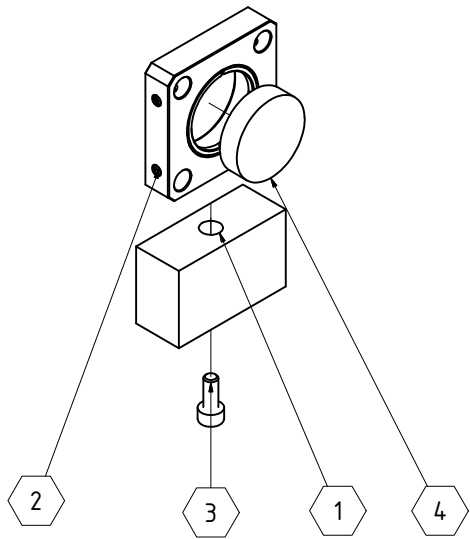
PARTS LIST			
ITEM	QTY	PART NUMBER	DESCRIPTION
1	1	BeamSplitter Mount	Aluminium
2	1	BeamSpiltter BS	Tp=50% or Ts=1%
3	1	SM1RR	Thorlabs



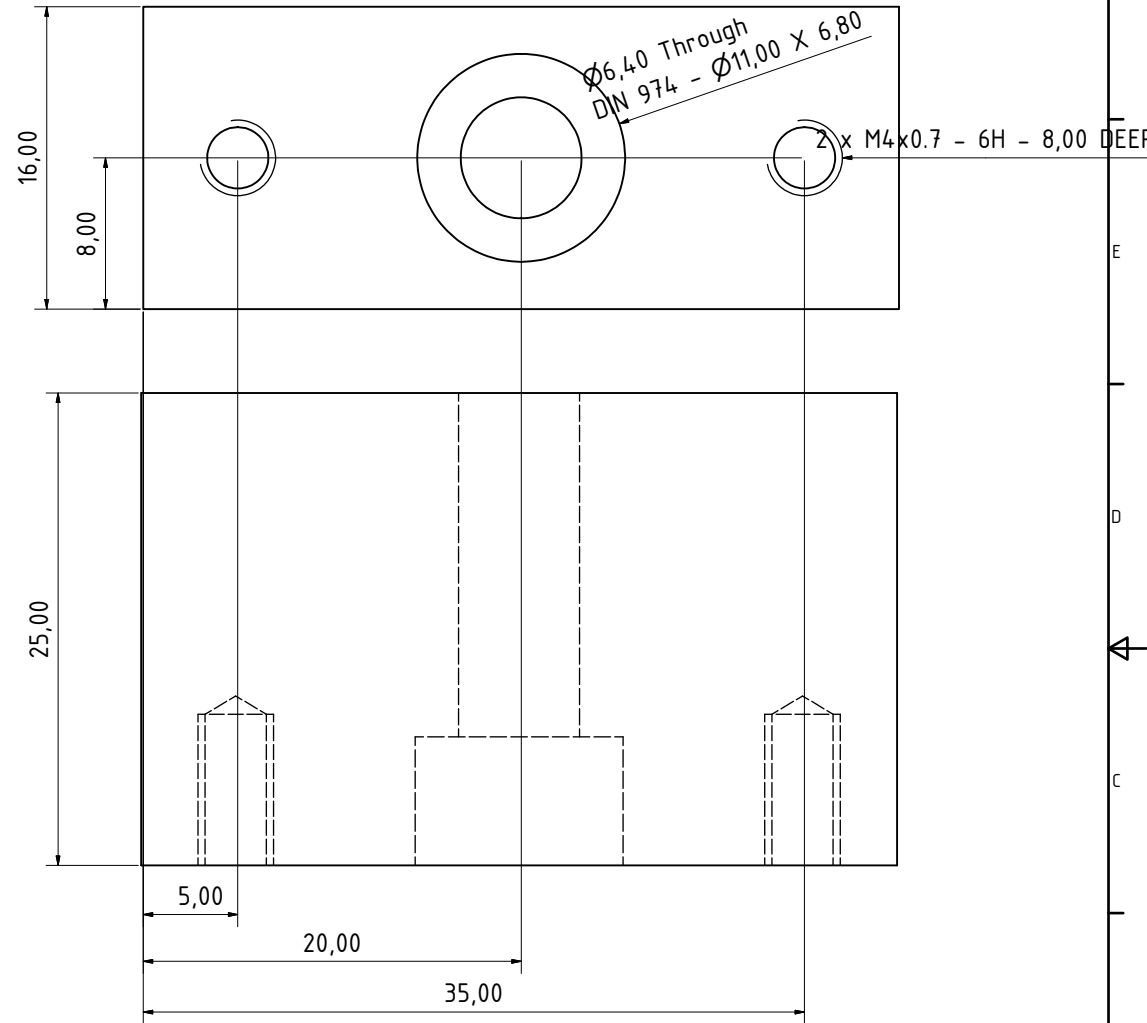
Date		Name	
Drawn	16.10.2010	chkrae	
Checked			
Standard			
ISS-Box			18
			A2

D1003121-v1

ITEM 11 Lens

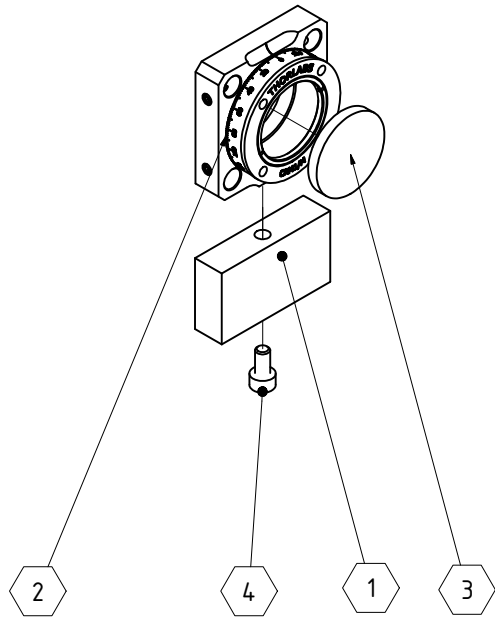


PARTS LIST			
ITEM	QTY	PART NUMBER	DESCRIPTION
1	1	Lens Base	Aluminium
2	1	Lens Mount	Owis
3	1	ANSI B18.3.1M - M4x0,7 x 10	Forged Socket Head Cap Screw - Metric
4	1	Lens	f=150mm

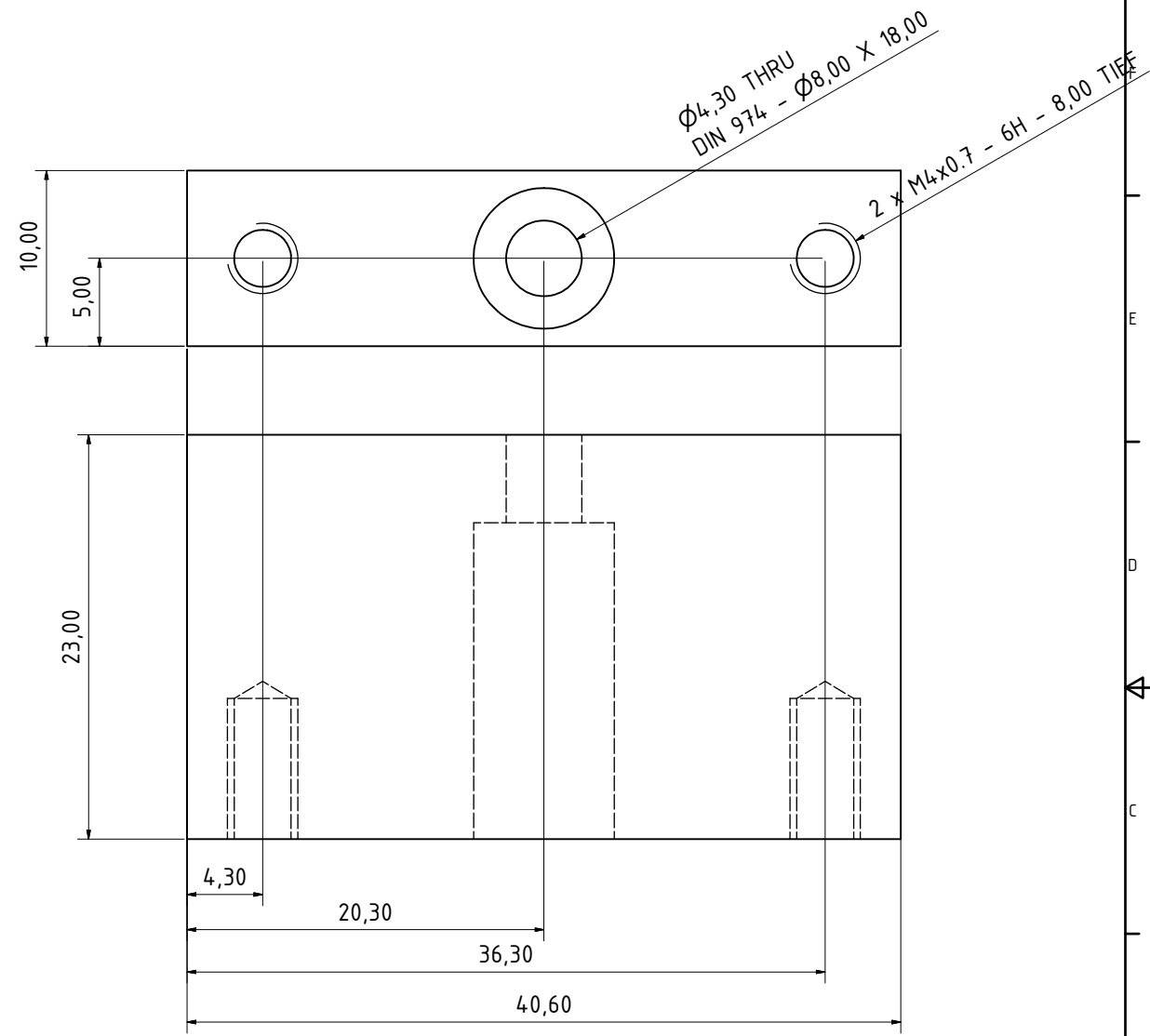


Date		Name	
Drawn	16.10.2010	Checked	chkrae
Standard			
D1003121-v1			
ISS-Box			20
			A2

ITEM 12 lambda/2



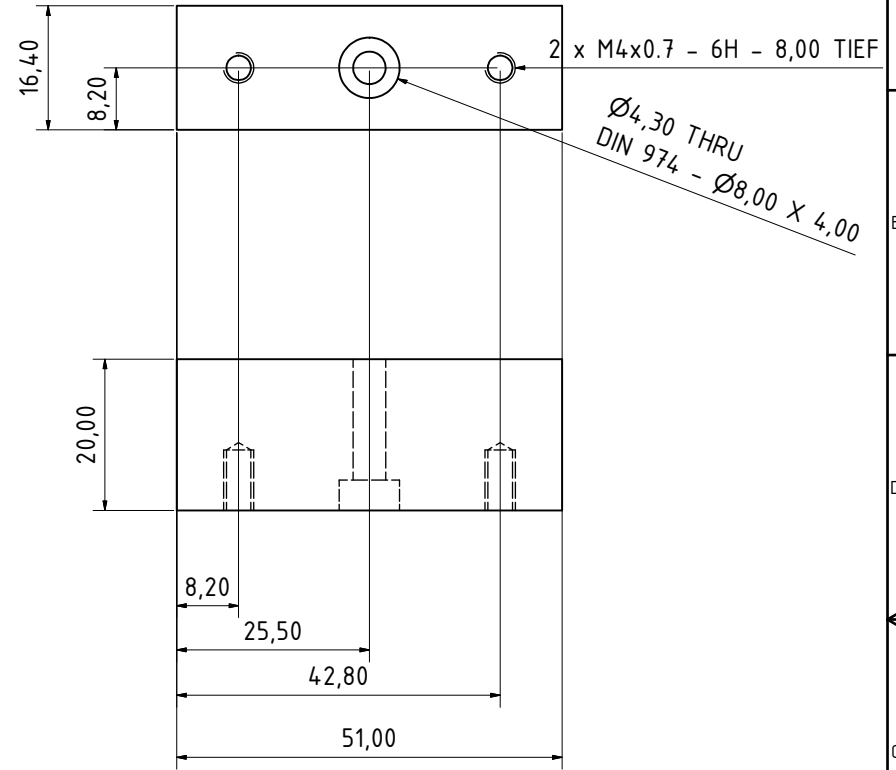
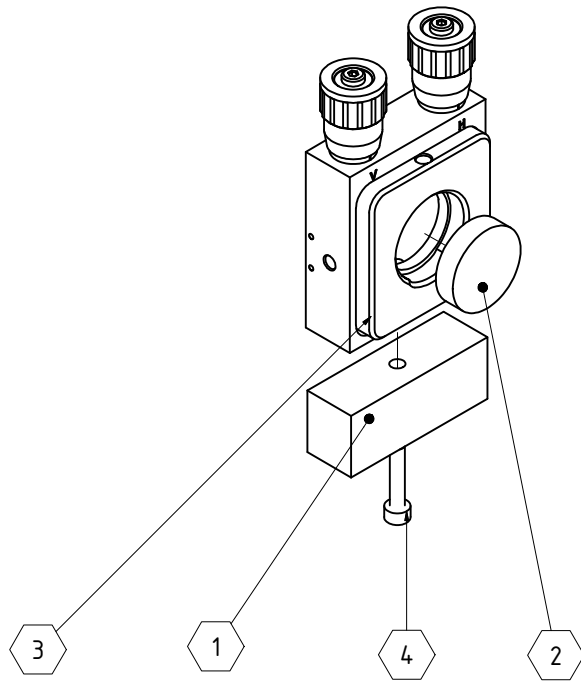
PARTS LIST			
ITEM	QTY	PART NUMBER	DESCRIPTION
1	1	Base_CRM1M	Aluminium
2	1	CRM1M	Thorlabs
3	1	Lambda2_Plate	B. Halle - RZQ 2.10
4	1	ANSI B18.3.1M - M4x0,7 x 8	Forged Socket Head Cap Screw - Metric



Date		Name	
Drawn	16.10.2010	Checked	chkræe
Standard			
ISS-Box			21
			A2

D1003121-v1

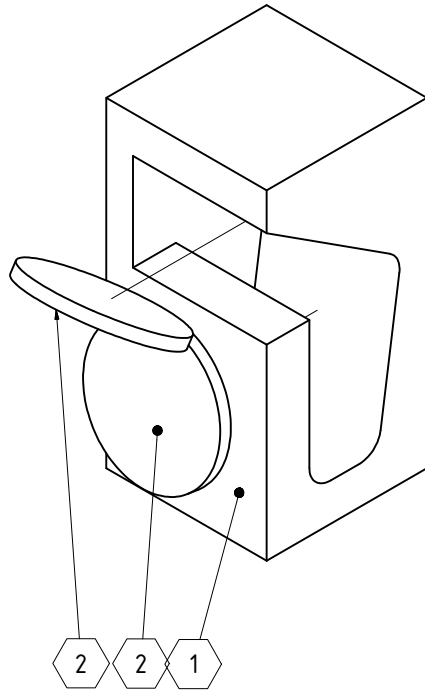
ITEM 13 Mirror



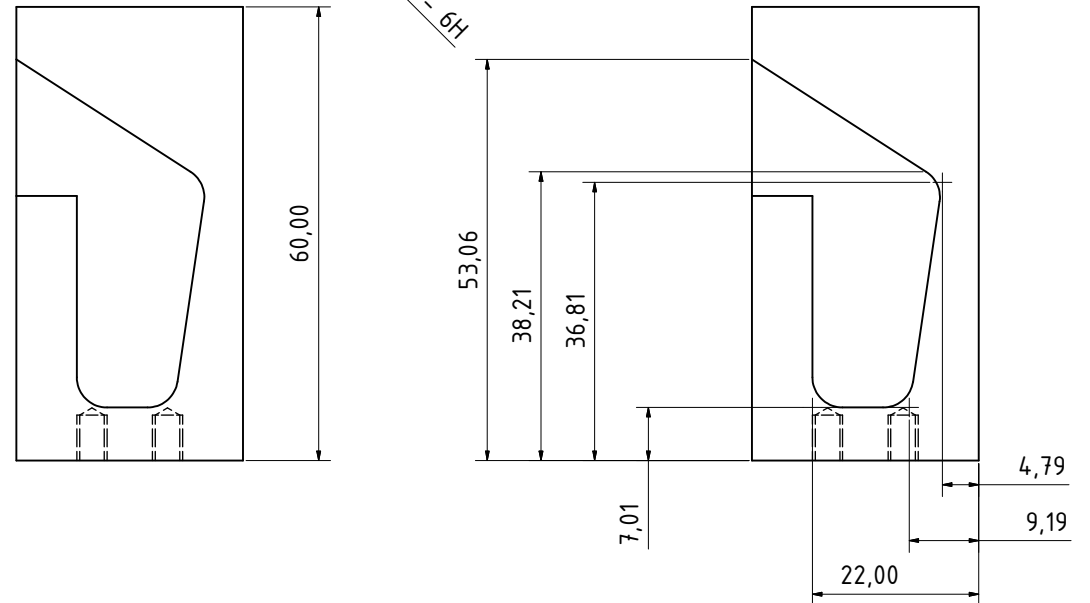
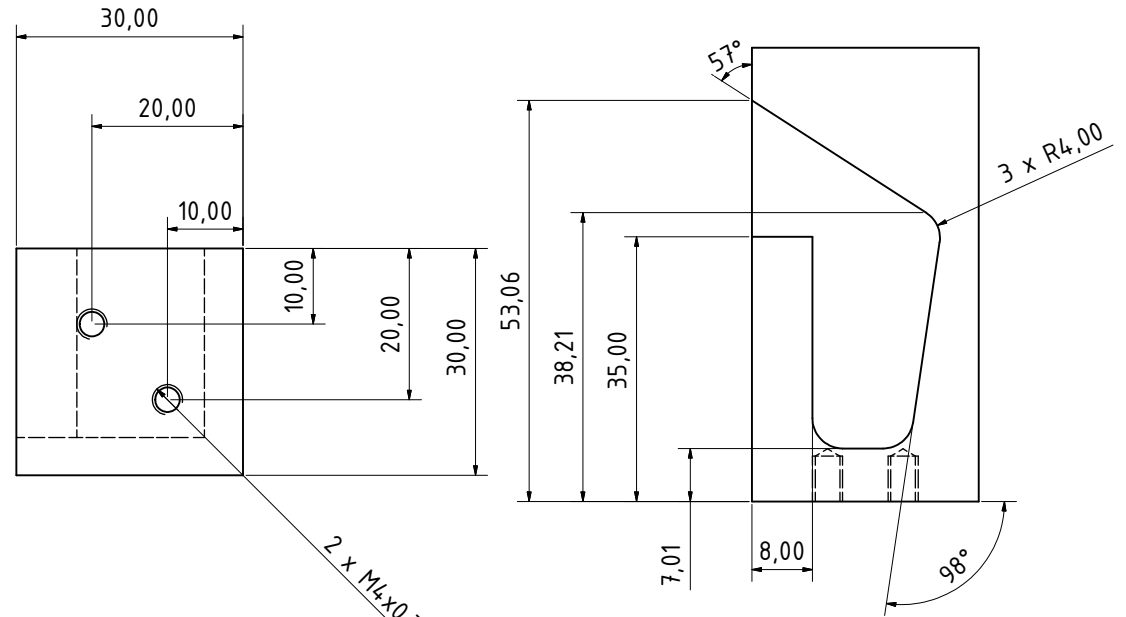
PARTS LIST			
ITEM	QTY	PART NUMBER	DESCRIPTION
1	1	Mirror Base	Aluminium
2	1	Mirror	HR
3	1	VM1M	Thorlabs
4	1	ANSI B18.3.1M - M4x0,7 x 20	Forged Socket Head Cap Screw - Metric

Date		Name	
Drawn	14.10.2010	Checked	chkræe
Standard			
D1003121-v1			22
ISS-Box			A2
State	Changes	Date	Name

ITEM 14 brewster-dump s-pol

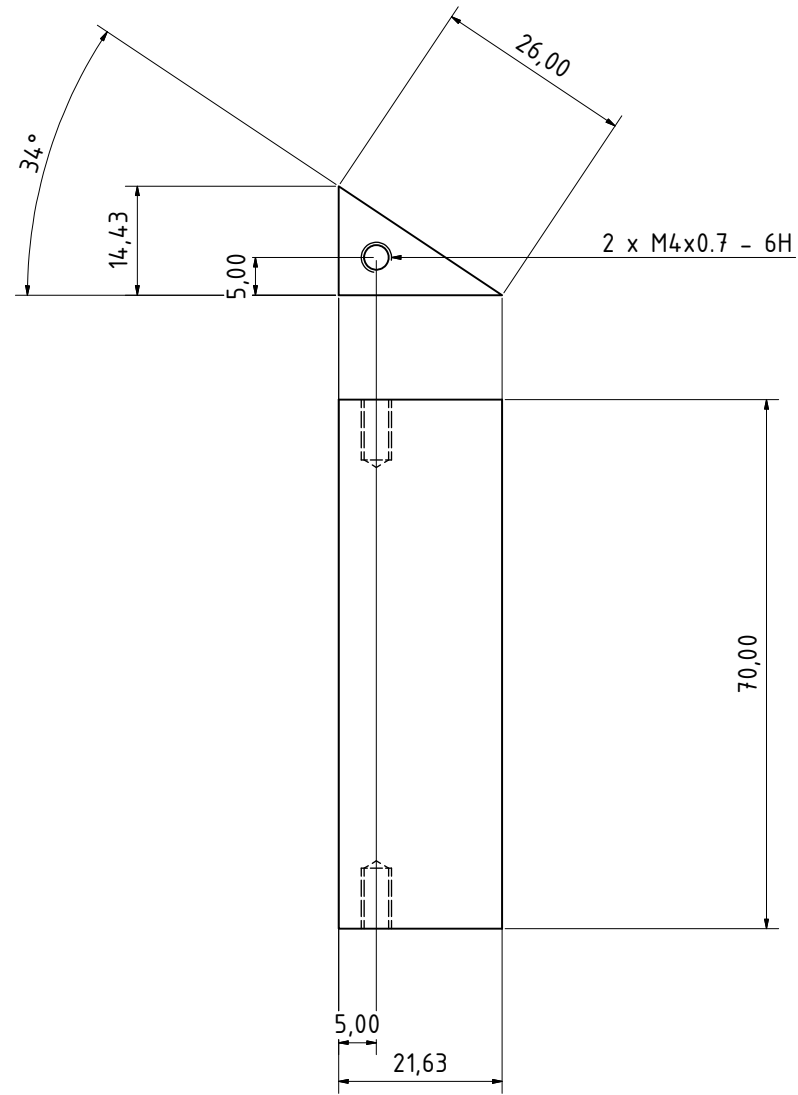
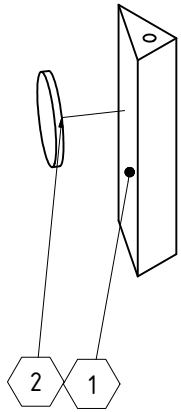


PARTS LIST			
ITEM	QTY	PART NUMBER	DESCRIPTION
1	1	brewster-dump_ s-pol	Aluminium
2	2	BG39 filter	1' Optic



Date		Name	
Drawn	14.10.2010	Checked	chkræe
Standard			
D1003121-v1			23
ISS-Box			A2
State	Changes	Date	Name

ITEM 15 & 16 brewster-dump p-pol

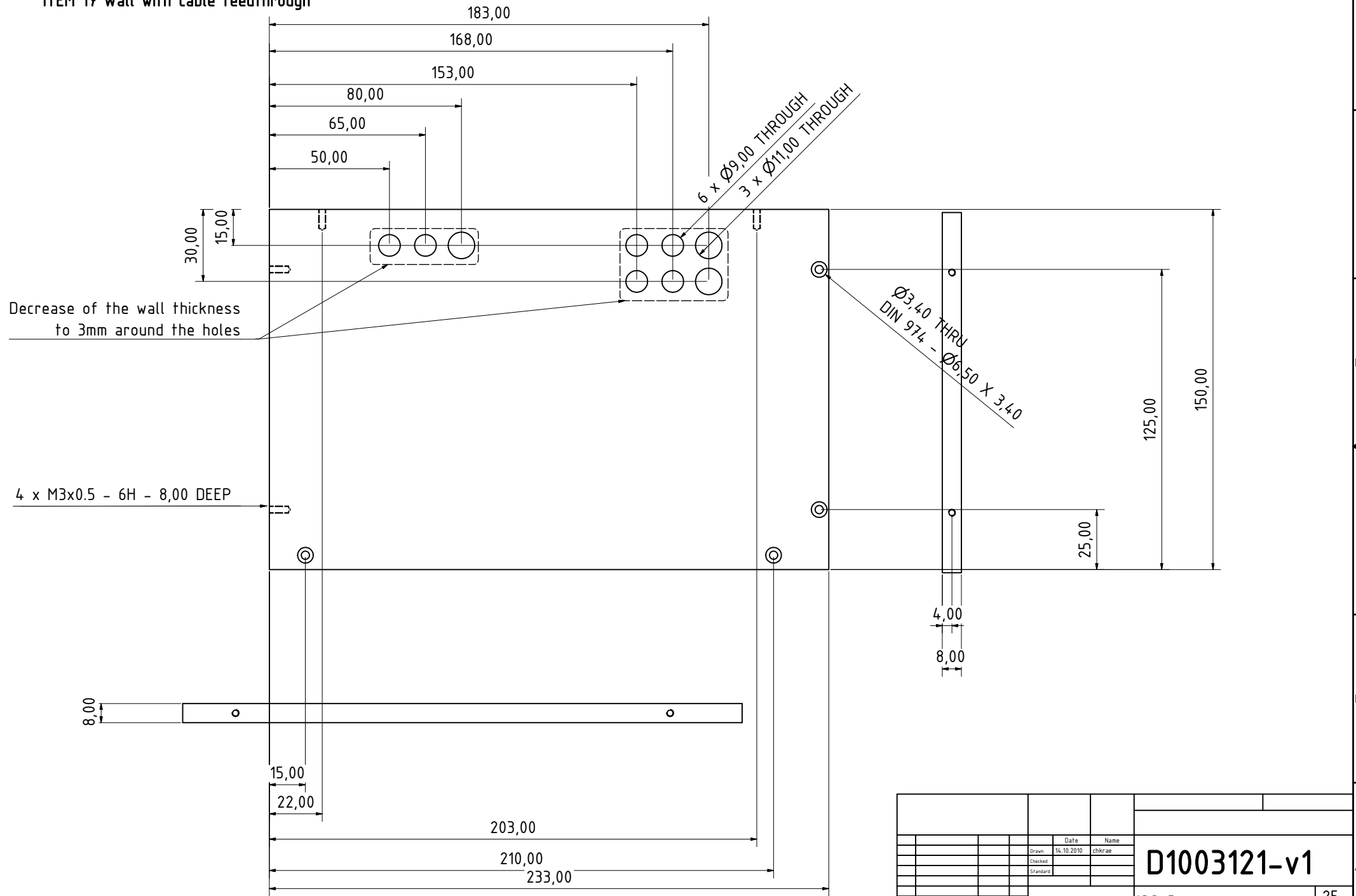


PARTS LIST			
ITEM	QTY	PART NUMBER	DESCRIPTION
1	1	brewster-dump_p-pol	Aluminium
2	1	BG39 filter	1' Optic

Difference between ITEM 15 & 16 is the position of the BG39 filter, see Sheet 5.

		Date	Name		
		Drawn 14.10.2010	chkrae	D1003121-v1	
		Checked			
		Standard			
				ISS-Box	
				24	
				A2	
State	Changes	Date	Name		

ITEM 17 Wall with cable feedthrough

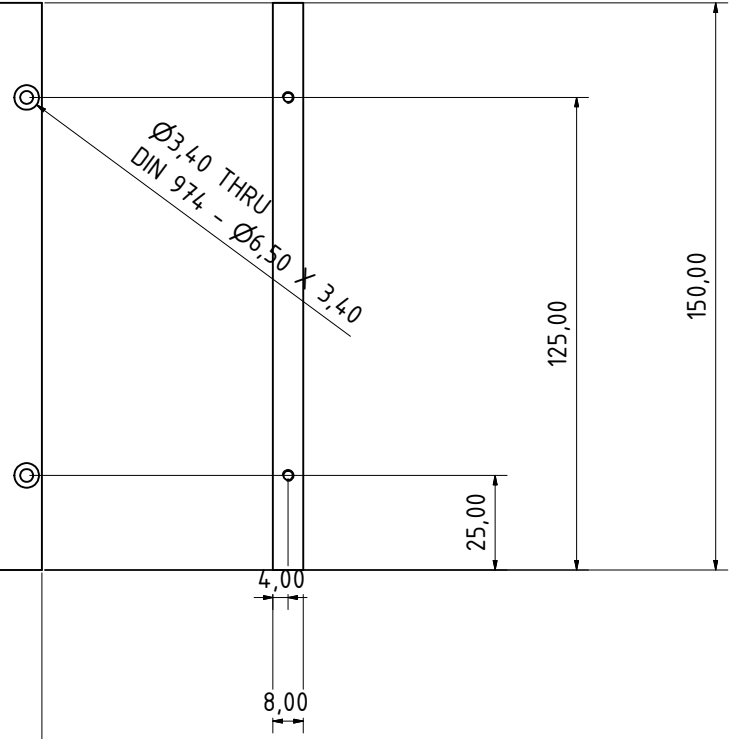
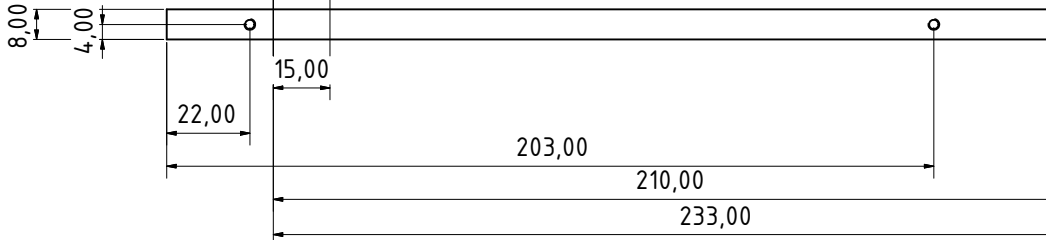


		Date	Name		
		Drawn	16.10.2010	chkrae	
		Checked			
		Standard			
				D1003121-v1	
				ISS-Box	
				25	
				A2	
State	Changes	Date	Name		

ITEM 20 Wall

4 x M3x0.5 - 6H - 8,00 DEEP

Ø3,40 THRU
DIN 974 - Ø6,50 X 3,40



Date		Name	
Drawn	16.10.2010	chkræe	
Checked			
Standard			
ISS-Box		26	
		A2	

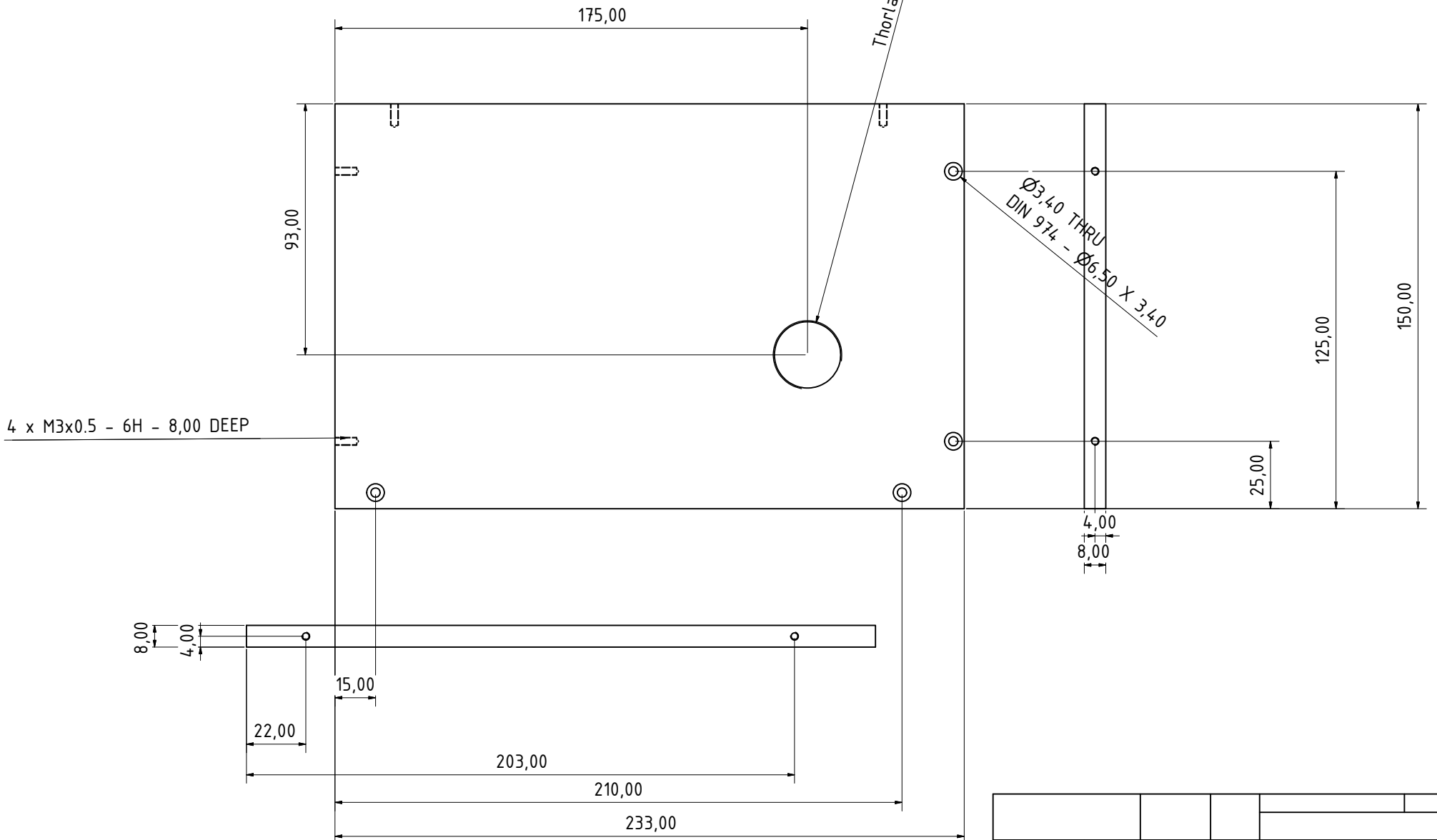
D1003121-v1

ISS-Box

26

A2

ITEM 21 Wall with beam entrance



Date		Name	
Drawn	16.10.2010	chkrac	
Checked			
Standard			
D1003121-v1			
ISS-Box			27
			A2

