

4

3

2

1

NOTES CONTINUED:

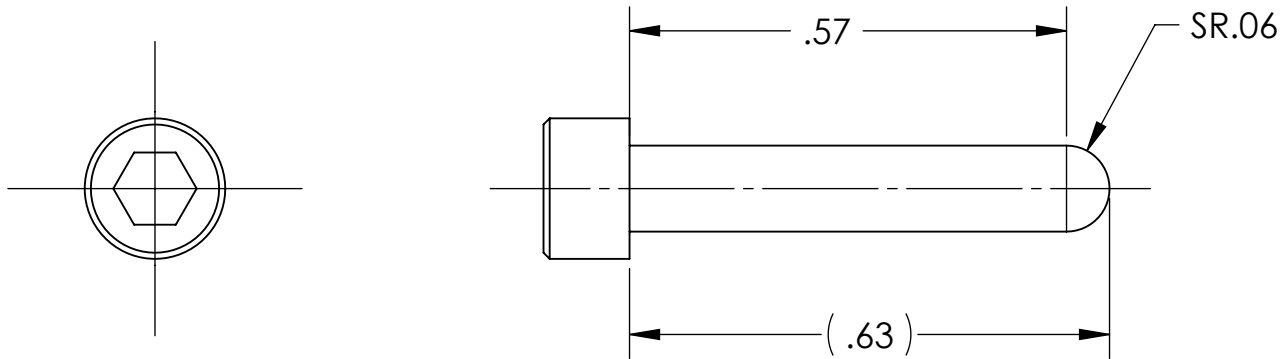
5. SCRIBE, ENGRAVE, OR MECHANICALLY STAMP (NO DYES OR INKS) A UNIQUE THREE DIGIT SERIAL NUMBER & REVISION NUMBER ON EACH PART. SERIAL NUMBERS START AT 001 FOR THE FIRST ARTICLE AND PROCEED CONSECUTIVELY. BAG AND TAG PARTS WITH THEIR DRAWING PART NUMBER, REVISION, VARIANT OR "TYPE" (IF APPLICABLE), AND QUANTITY. IF PARTS ARE TOO SMALL TO SCRIBE, BAGGING AND TAGGING ALONE IS SUFFICIENT.

EXAMPLE (PART): XXX-v1  
 EXAMPLE (TAG): DXXXXXX-VY, TYPE-XX, QTY: TBD

6. PART IS TO BE MADE FROM STOCK SOCKET HEAD CAP SCREW, #4-40 UNC-3A, FULLY THREADED.

7. ALL PARTS SHALL BE MANUFACTURED IN ACCORDANCE WITH LIGO SPECIFICATION E0900364.

REV.	DATE	DCN #	DRAWING TREE #
v1	N/A	INTERNAL REV	-
v2	04 NOV 2010	E1000665	-
-	-	-	-



NOTES AND TOLERANCES: (UNLESS OTHERWISE SPECIFIED)

DIMENSIONS ARE IN INCHES

TOLERANCES:  
 .XX ± .01  
 .XXX ± .005

ANGULAR ± 0.5°

1. INTERPRET DRAWING PER ASME Y14.5-1994.
2. REMOVE ALL SHARP EDGES, R.02 MIN.
3. DO NOT SCALE FROM DRAWING.
4. ALL MACHINING FLUIDS MUST BE FULLY SYNTHETIC, FULLY WATER SOLUBLE AND FREE OF SULFUR, SILICONE, AND CHLORINE.

MATERIAL 300 SSSL 6  
 FINISH N/A μinch

**LIGO** CALIFORNIA INSTITUTE OF TECHNOLOGY  
 MASSACHUSETTS INSTITUTE OF TECHNOLOGY

SYSTEM ADVANCED LIGO SUB-SYSTEM

NEXT ASSY MULTIPLE ASSYS

PART NAME SCREW, SOCKET HEAD CAP, #4-40 UNC-3A X 0.625 LONG, FULLY THREADED, ROUNDED END

DESIGNER		SIZE	DWG. NO.	REV.
DRAFTER	M. MEYER	A	D1002957	v2
CHECKER	D. BRIDGES	SCALE: 4:1	PROJECTION:	SHEET 1 OF 1
APPROVAL				

4

3

2

1