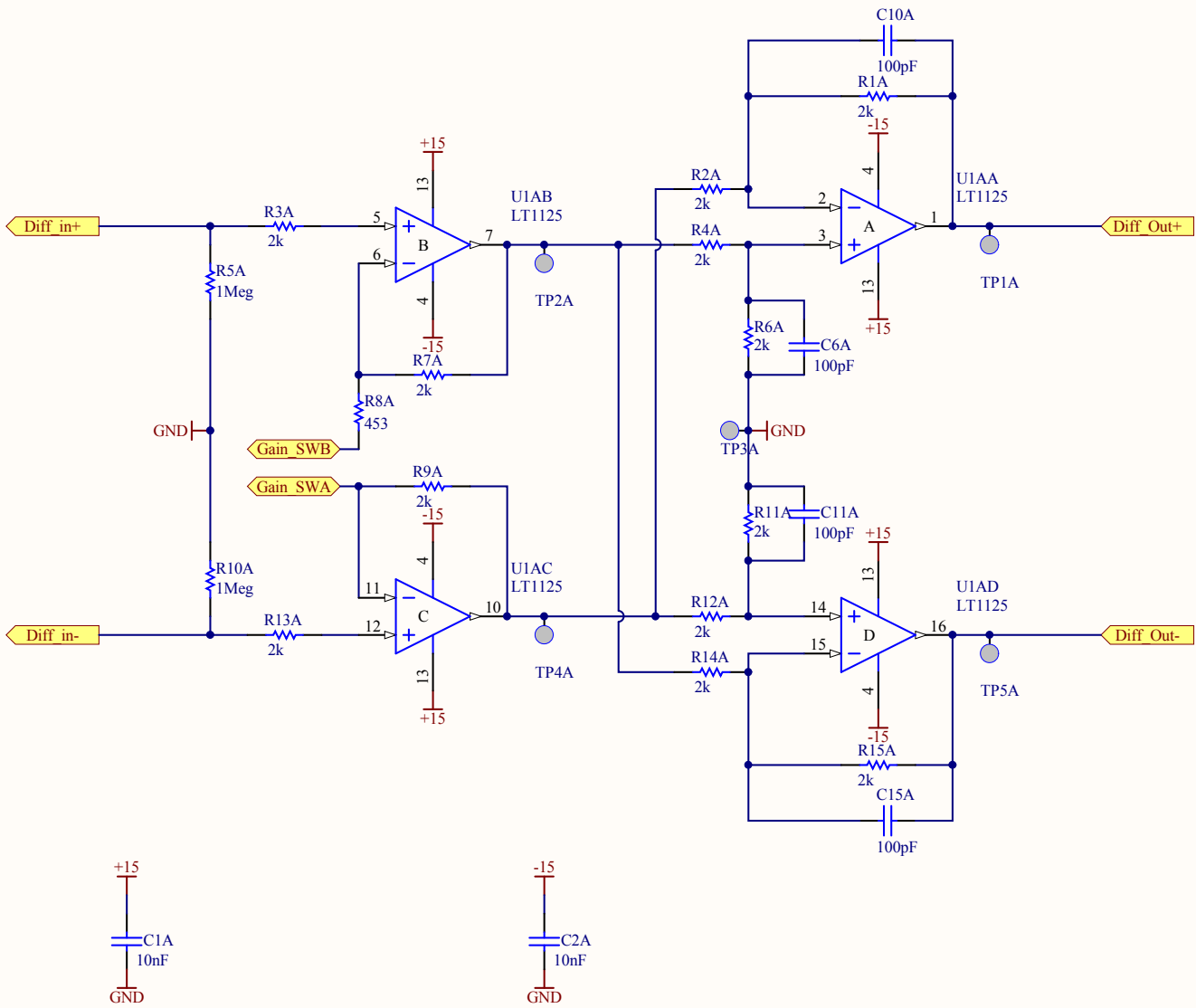
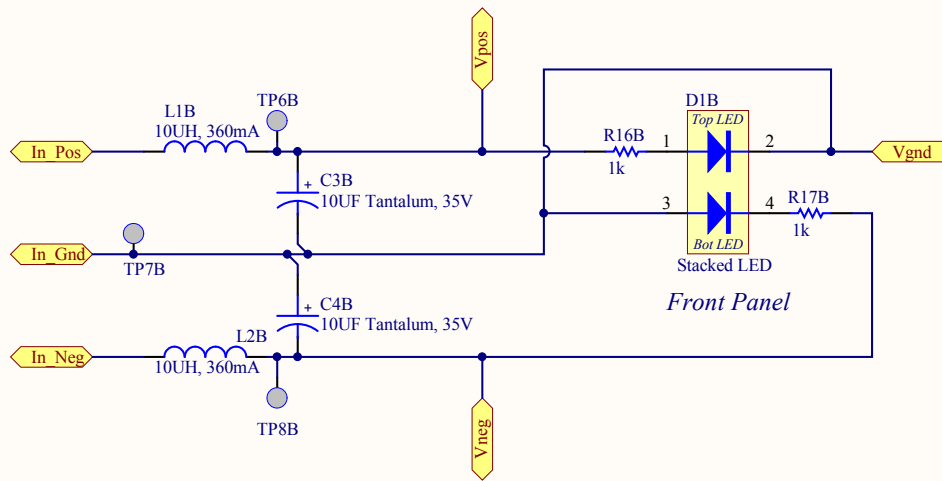


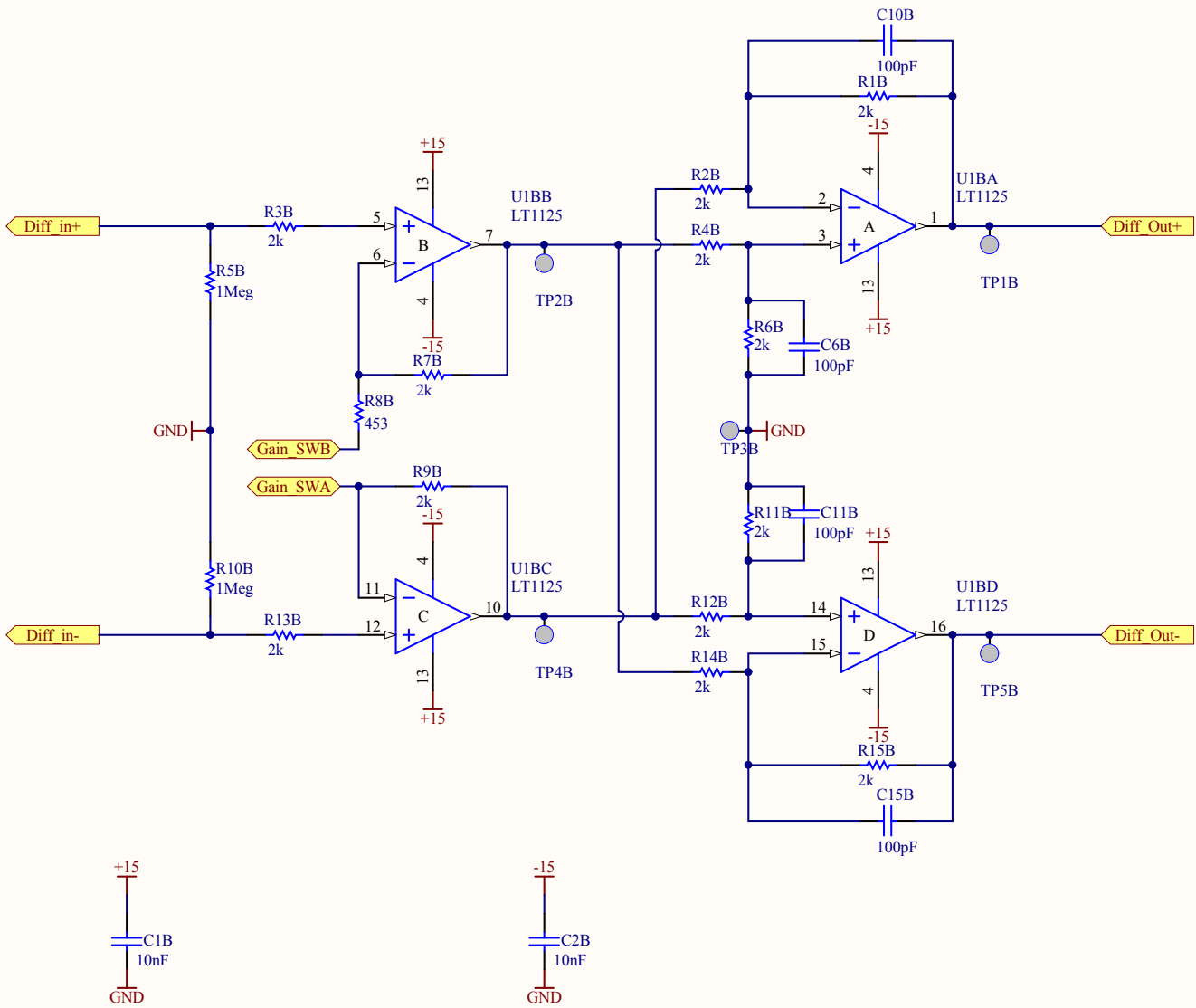
Title		
Size	Number	Revision
A		
Date:	11/9/2010	Sheet of
File:	D:\Work\...\PowerInput.SchDoc	Drawn By:



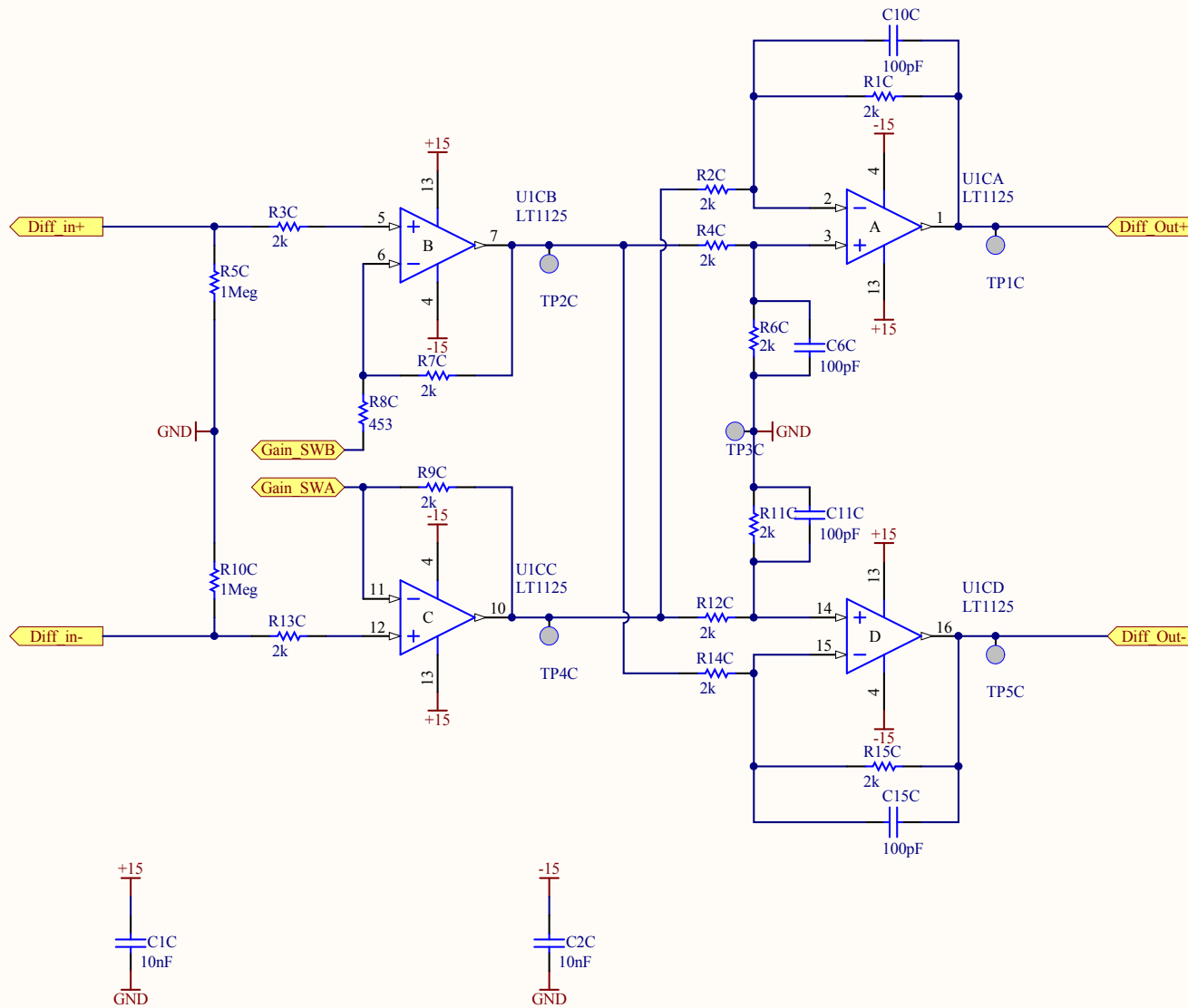
Title		
Size	Number	Revision
A		
Date:	11/9/2010	Sheet of
File:	D:\Work\...\DiffRecvSend.SchDoc	Drawn By:



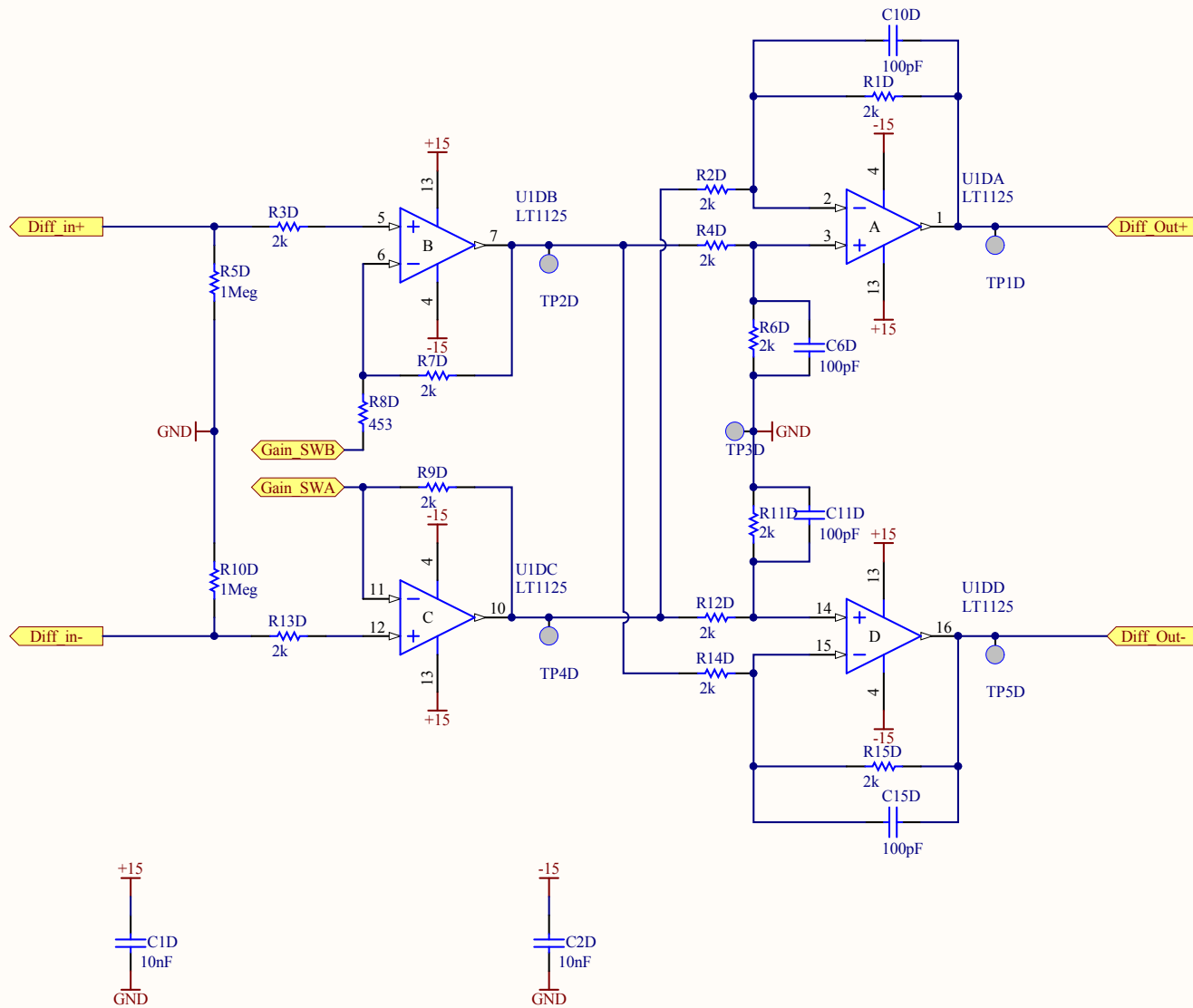
Title		
Size	Number	Revision
A		
Date:	11/9/2010	Sheet of
File:	D:\Work\...\PowerInput.SchDoc	Drawn By:



Title		
Size	Number	Revision
A		
Date:	11/9/2010	Sheet of
File:	D:\Work\...\DiffRecvSend.SchDoc	Drawn By:

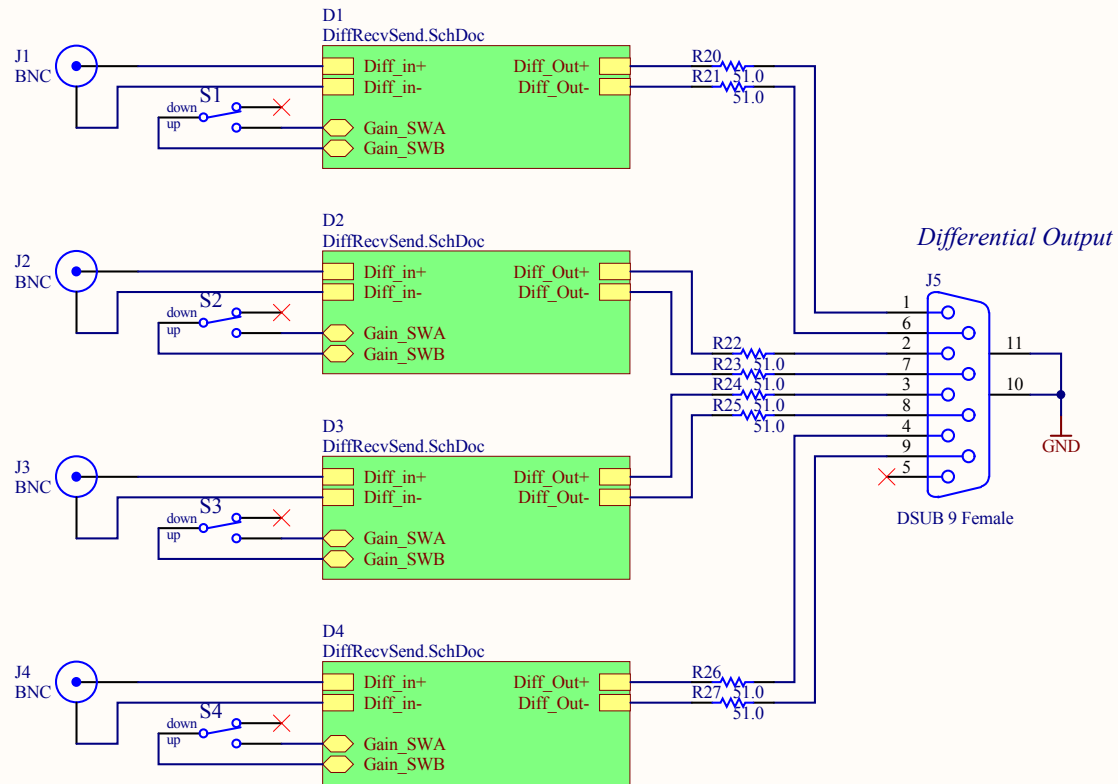


Title		
Size	Number	Revision
A		
Date:	11/9/2010	Sheet of
File:	D:\Work\...\DiffRecvSend.SchDoc	Drawn By:



Title		
Size	Number	Revision
A		
Date:	11/9/2010	Sheet of
File:	D:\Work\...\DiffRecvSend.SchDoc	Drawn By:

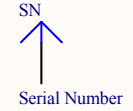
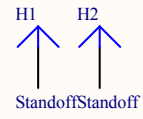
Front of Board
Signal Input



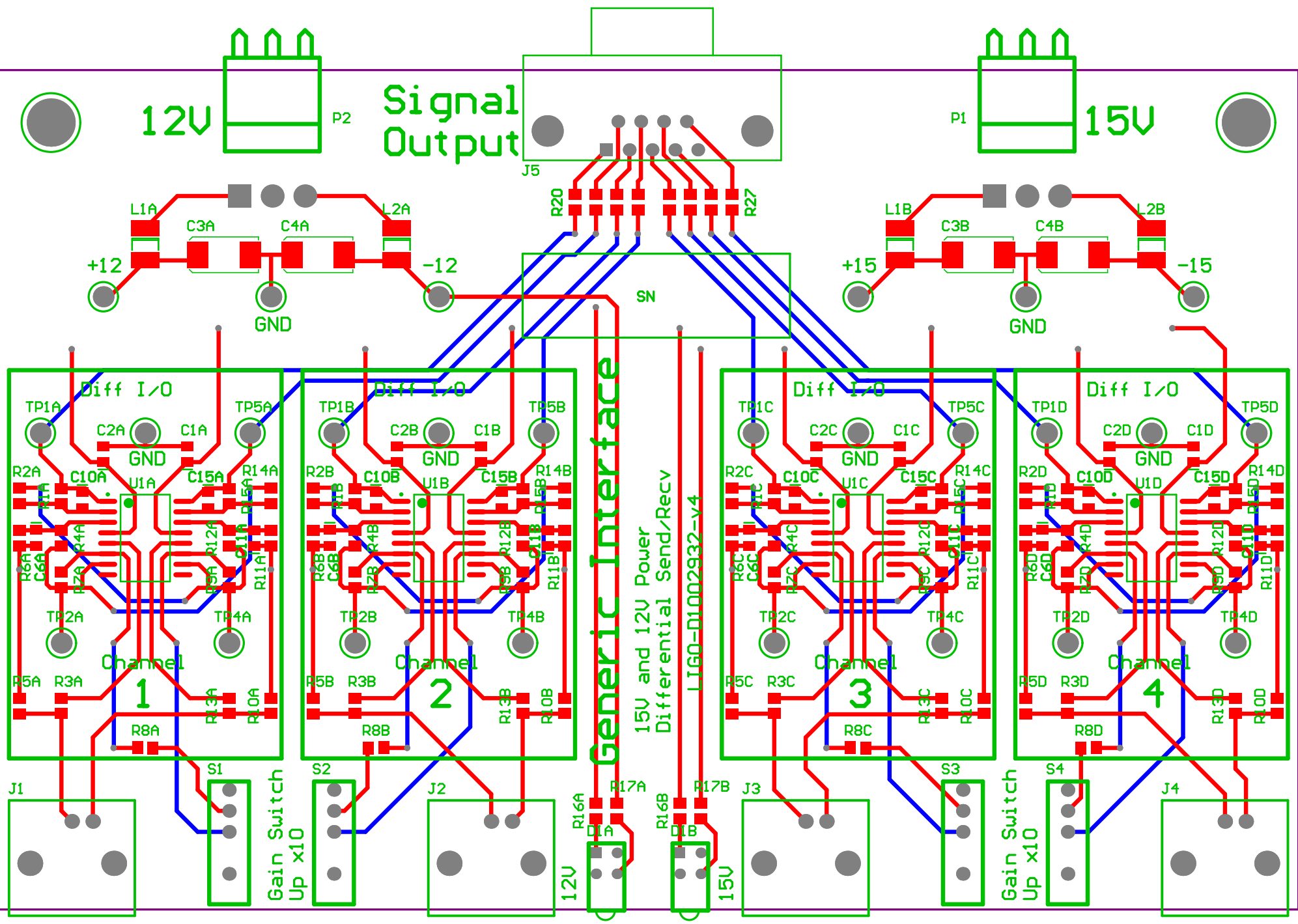
Rear of Board
DC Power Input



RAF # 3049-B-440-B-16



Title		
Size A	Number	Revision
Date: 11/9/2010	Sheet of	
File: D:\Work\...\GenericInterface.SchDoc	Drawn By:	



12V

P2

Signal Output

J5

P1

15V

+12

-12

GND

SN

+15

-15

GND

Diff I/O

Diff I/O

Diff I/O

Diff I/O

Channel 1

Channel 2

Channel 3

Channel 4

Generic Interface

15V and 12V Power
Differential Send/Recv

LIGO-D1002932-v4

J1

S1

Gain Switch
Up x10

S2

J2

12V

J3

S3

15V

J4

Gain Switch
Up x10

S4

J4