



CALIFORNIA INSTITUTE OF TECHNOLOGY  
 MASSACHUSETTS INSTITUTE OF TECHNOLOGY

DCN No. **E990256-00-D**

SHEET **1** OF **1**

# DOCUMENT CHANGE NOTICE (DCN)

DOCUMENT No. (DOC-REV-GP. ID)	TITLE	NEW REV.
D990414-n/a	Cavity Beamdump Housing Assembly, BSC8, 2KBSAR3	A

**CHANGE DESCRIPTION (FROM/TO):**

Initial drawing release.

**ACTION:**  Incorporate change  Attach DCN to drawing(s)  Other action (specify):

**DISPOSITION OF HARDWARE (IDENTIFY SERIAL NUMBERS)**

**DCN DISTRIBUTION (X=incl. docs)**

- No hardware affected (record change only)
- List S/Ns which comply already:
- List S/Ns to be reworked or scrapped:
- List S/Ns to be built with this change:
- List S/Ns to be retested per this change:
- 
- 
- 
- 

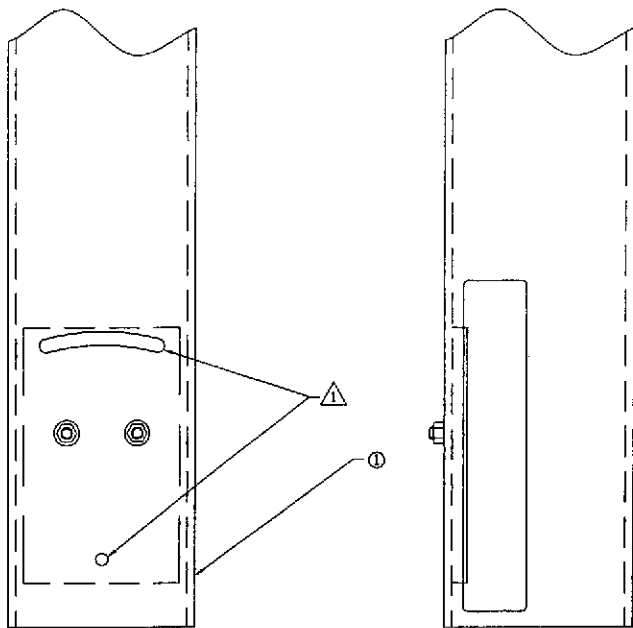
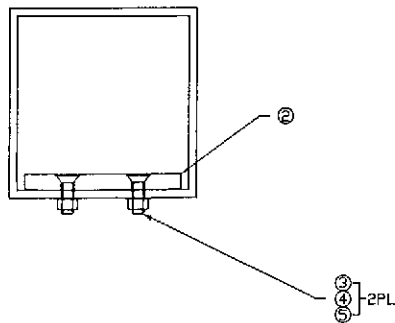
Althouse	Barish	Coles
X Coyne	Lazzarini	Lindquist
Sanders	Shoemaker	Stapfer
Tyler	Weiss	Whitcomb
Camp		x Conley
x Jones		x Smith

**SAFETY, COST, SCHEDULE, REQUIREMENTS IMPACT?**  No  Yes (If yes, enter Change Request number )

APPROVALS:	DATE	OTHER APPROVALS (specify)	DATE
ORIGINATOR: C. Conley	6-17-99		
TASK LEADER: <i>Michael Smith</i>	6/18/99		
GROUP LEADER: <i>D. Coyne</i>	6/18/99		
DCC RELEASE: <i>[Signature]</i>	6-22-99		

NOTES: (UNLESS OTHERWISE SPECIFIED)  
 △ ALIGN NOTED MATING FEATURES IN ITEMS  
 1 & 2 AS FOLLOWS:

ALIGN HOLES USING A SIZE V (#.377) OR  
 V (#.386) DRILL ROD OR EQUIVALENT. ROTATE  
 SLITS INTO ALIGNMENT BY EYE, THEN FASTEN  
 HARDWARE.



REF.	QTY.	PART or DRWG No.	NOMENCLATURE or DESCRIPTION	MATERIAL
5	2	U-E Components WFV-38	.39 ID X .625 OD X .032 THICK FLAT WASHER	18-8 ST STEEL
4	2	McM-Carr 94804A320	3/8-16 HEX NUT	316 ST STEEL
3	2	McM-Carr 90585A626	3/8-16 X 1.25 SOCKETED FLAT HEAD SCREW	316 ST STEEL
2	1	D990140	HOUSING PLATE	-
1	1	D990222	HOUSING TUBE	-

PARTS and MATERIAL LIST

LIGO CALIFORNIA INSTITUTE OF TECHNOLOGY  
 MASSACHUSETTS INSTITUTE OF TECHNOLOGY

CAVITY BEAM DUMP  
 HOUSING ASSEMBLY  
 BSCB, 2KBSAR3

DWG. NO.	DESCRIPTION	MATERIAL	HEAT TREAT	FINISH	REV	DESCRIPTION	ISSUE DESCRIPTION	APPROV	CHECK	DRWN	DATE	EXP. FILE	DRG. FILE	REV.	1 OF 1
	REFERENCE DRAWINGS				A	REV E990256-08				Cardy	6-17-99	D990414-Addg	B	D990414-A	

UNLESS OTHERWISE SPECIFIED  
 DIMENSIONS ARE IN INCHES

TOLERANCES:  
 FRACTIONAL &  
 ANGULAR &  
 ANGULAR & BEND &  
 TWO PLACE DECIMAL

THREE PLACE DECIMAL  
 FINISHED SURFACE PLUS  
 BREAK CORNERS IN OUT  
 REMOVE ALL BURRS