

L190-8980631-00-D

06/30/98 TUE 14:32 FAX 504 686 7189

PARSONS

INITIATOR C. Gray

0007

DATE 6/22/98

SEI HAM ECR-002

ENGINEERING CHANGE REQUEST (ECR)

NEXT ASSEMBLY NO. D 972613

CUSTOMER DRAWING NO. D 972613

DRAWING TITLE LIGO HAM Support Tube Mounting Base

REVISION: FROM _____ TO _____



HYTEC
INCORPORATED

DESCRIPTION OF CHANGE (Simple terms. Identify Draw (if possible):

With 3/4" ball end mill, ~~is~~ made cut with .375 radius
.400 deep. (see drawing)

REASONS FOR CHANGE:

Give clearance for bolt heads.

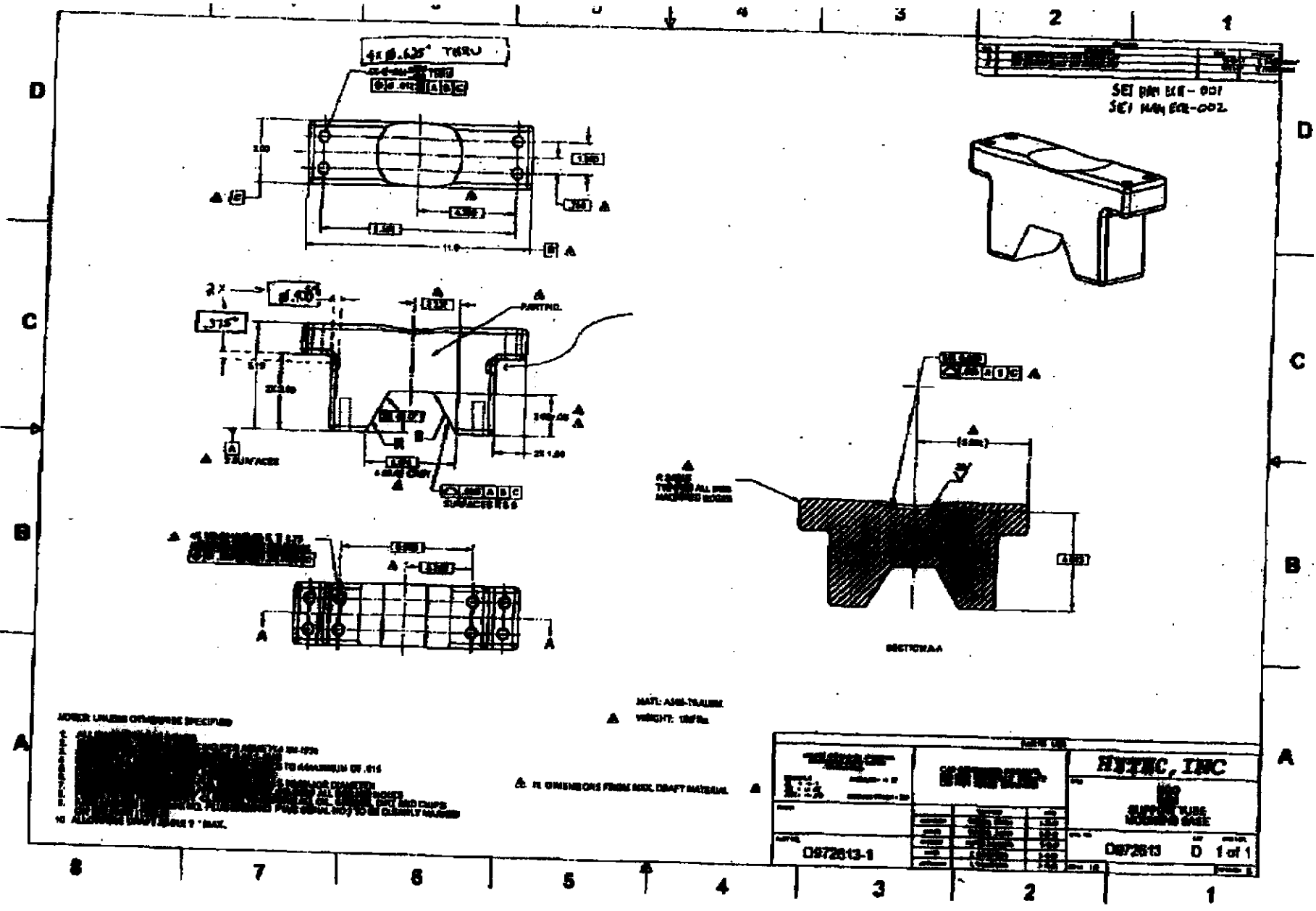
IDENTIFY OTHER PARTS/GROUPS THAT INTERFACE WITH THE ABOVE (Required):

INTERFACE	RESPONSIBLE PARTY	INITIAL

NOTIFY COGNIZANT DESIGNER: _____

NOTIFY COGNIZANT ENGINEER: _____

APPROVED: *[Signature]*



MORE DIMENSIONS OR FINISH SPECIFIED
 ALL DIMENSIONS UNLESS OTHERWISE SPECIFIED
 DIMENSIONS TO CENTER UNLESS OTHERWISE SPECIFIED
 DIMENSIONS TO SURFACE UNLESS OTHERWISE SPECIFIED
 DIMENSIONS TO EDGE UNLESS OTHERWISE SPECIFIED
 DIMENSIONS TO CORNER UNLESS OTHERWISE SPECIFIED
 DIMENSIONS TO CENTERLINE UNLESS OTHERWISE SPECIFIED
 DIMENSIONS TO CENTER OF GRAVITY UNLESS OTHERWISE SPECIFIED
 DIMENSIONS TO CENTER OF MASS UNLESS OTHERWISE SPECIFIED
 DIMENSIONS TO CENTER OF BUOYANCY UNLESS OTHERWISE SPECIFIED
 DIMENSIONS TO CENTER OF PRESSURE UNLESS OTHERWISE SPECIFIED
 DIMENSIONS TO CENTER OF GRAVITY UNLESS OTHERWISE SPECIFIED
 DIMENSIONS TO CENTER OF MASS UNLESS OTHERWISE SPECIFIED
 DIMENSIONS TO CENTER OF BUOYANCY UNLESS OTHERWISE SPECIFIED
 DIMENSIONS TO CENTER OF PRESSURE UNLESS OTHERWISE SPECIFIED
 ALL DIMENSIONS MUST BE TO 0.0005" MAX.

MATERIAL: ALUMINUM
 FINISH: UNFINISHED
 DIMENSIONS FROM THE DRAFT MATERIAL

HYTEC, INC		HYTEC, INC	
0972613-1		0972613 D 1 of 1	