



DOCUMENT CHANGE NOTICE (DCN)

Item	DOCUMENT No. (DOC-REV-GP. ID)	TITLE	NEW REV.
1	D970267-C-H	PEM, ELECTRO MAGNETIC SHAKER PLATE BASE	D
2	D970268-A-H	PEM, P2T SHAKER PLATE	B
3	D970271-00-H	BSC, INTERFACE PLATE	A
4	D970273-B-H	PEM ELECTRO MAGNETIC SHAKER PLATE SUPPORT BAR	C
5	D970279-B-H	PEM ELECTRO MAGNETIC SHAKER MASSES	C

Item	DOCUMENT No. (DOC-REV-GP. ID)	TITLE	NEW REV.
CHANGE DESCRIPTION (FROM/TO):			
6	D970288-B-H	PEM SUPPORT PLATE	C
7	D980303-00-H	FLOOR MOUNT, PEM STAY CLEAR ZONE	A
8	D980305-00-H	MODIFIED BOLT, E-M SHAKER	A
9	D970270-B-H	PEM INTERFACE PLATE, ITAM	C

D970267 - Add counter bore around A holes, Change counter bore in B holes to slotted. Add MARKING

D970268 - Change E INSERTS FROM 10-32 TO 1/4-20. Add MARKING

D970270 - Reduce .500" BOSS TO .125". Add 11 B holes. Add MARKING

D970273 - Redesign FOR LIFTING HOLES AND LOCKING PINS. Add MARKING

D970279 - Add 6 C holes FOR LOCKING. Add MARKING

D970288 - Add 2 A holes, Add MARKING

D970303 - Rebase

D970305 - Rebase

REASON FOR CHANGE: First article improvements.

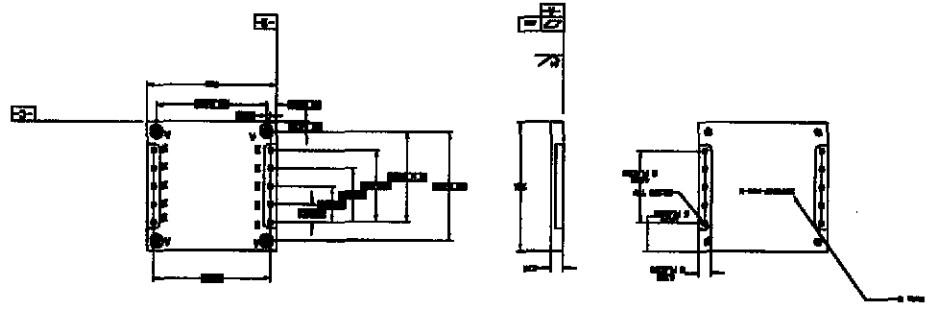
ACTION: Incorporate change Attach DCN to drawing(s) Other action (specify):

DISPOSITION OF HARDWARE (IDENTIFY SERIAL NUMBERS)	DCN DISTRIBUTION (X=incl. docs)
<input type="checkbox"/> No hardware affected (record change only)	Althouse Barish Coles
<input type="checkbox"/> List S/Ns which comply already:	Coyne Lazzarini Lindquist
<input checked="" type="checkbox"/> List S/Ns to be reworked or scrapped: ITEM # 1, 3, 4, 5, QTY 4	Sanders Shoemaker
<input checked="" type="checkbox"/> List S/Ns to be built with this change: ITEM # 2, 6 QTY 8 and 4 respectively.	Stapfer Tyler
<input type="checkbox"/> List S/Ns to be retested per this change: ITEM # 1, 3, 4, 5	Weiss Whitcomb
<input type="checkbox"/>	Zydowicz
<input type="checkbox"/>	
<input type="checkbox"/>	
<input type="checkbox"/>	
<input type="checkbox"/>	

SAFETY, COST, SCHEDULE, REQUIREMENTS IMPACT? No Yes (If yes, enter Change Request number)

APPROVALS:	DATE	OTHER APPROVALS (specify)	DATE
ORIGINATOR: <i>Mark J. Smith</i>	6-29-98		
TASK LEADER: <i>[Signature]</i>			
GROUP LEADER: <i>[Signature]</i>	30 June 98		
DCC RELEASE: <i>[Signature]</i>	9/9/98		

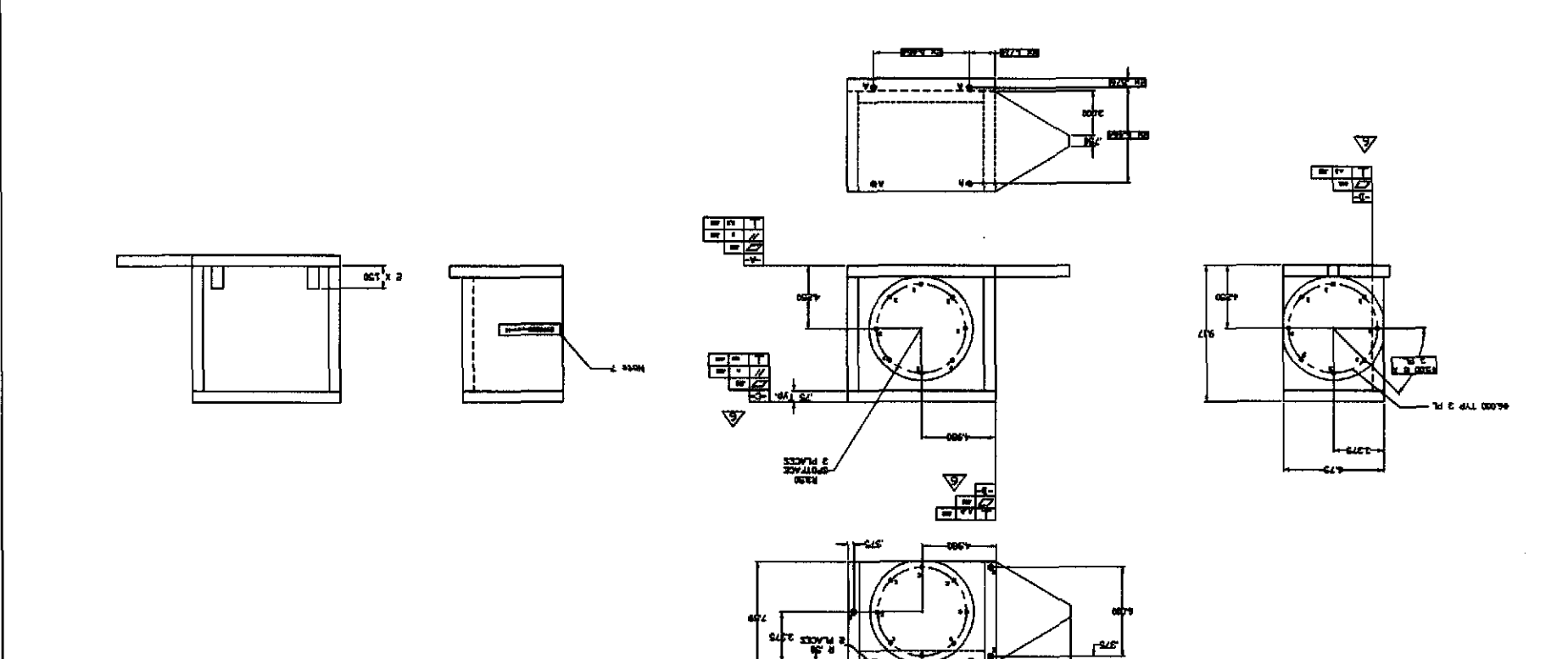
REV	REVISION	DATE	BY	DRAWING INFORMATION		TITLE	DRAWING NUMBER	PROJECT NUMBER	SHEET NUMBER	SHEET TOTAL
				NO.	DESCRIPTION					
1	ADD DIMENSIONS TO A VIEW. DIMENSIONS-4									
2	ADD DIMENSIONS TO A VIEW. DIMENSIONS-4									
3	ADD DIMENSIONS TO A VIEW. DIMENSIONS-4									
4	ADD DIMENSIONS TO A VIEW. DIMENSIONS-4									
5	ADD DIMENSIONS TO A VIEW. DIMENSIONS-4									
6	ADD DIMENSIONS TO A VIEW. DIMENSIONS-4									
7	ADD DIMENSIONS TO A VIEW. DIMENSIONS-4									
8	ADD DIMENSIONS TO A VIEW. DIMENSIONS-4									
9	ADD DIMENSIONS TO A VIEW. DIMENSIONS-4									
10	ADD DIMENSIONS TO A VIEW. DIMENSIONS-4									
11	ADD DIMENSIONS TO A VIEW. DIMENSIONS-4									
12	ADD DIMENSIONS TO A VIEW. DIMENSIONS-4									
13	ADD DIMENSIONS TO A VIEW. DIMENSIONS-4									
14	ADD DIMENSIONS TO A VIEW. DIMENSIONS-4									
15	ADD DIMENSIONS TO A VIEW. DIMENSIONS-4									
16	ADD DIMENSIONS TO A VIEW. DIMENSIONS-4									
17	ADD DIMENSIONS TO A VIEW. DIMENSIONS-4									
18	ADD DIMENSIONS TO A VIEW. DIMENSIONS-4									
19	ADD DIMENSIONS TO A VIEW. DIMENSIONS-4									
20	ADD DIMENSIONS TO A VIEW. DIMENSIONS-4									
21	ADD DIMENSIONS TO A VIEW. DIMENSIONS-4									
22	ADD DIMENSIONS TO A VIEW. DIMENSIONS-4									
23	ADD DIMENSIONS TO A VIEW. DIMENSIONS-4									
24	ADD DIMENSIONS TO A VIEW. DIMENSIONS-4									
25	ADD DIMENSIONS TO A VIEW. DIMENSIONS-4									
26	ADD DIMENSIONS TO A VIEW. DIMENSIONS-4									
27	ADD DIMENSIONS TO A VIEW. DIMENSIONS-4									
28	ADD DIMENSIONS TO A VIEW. DIMENSIONS-4									
29	ADD DIMENSIONS TO A VIEW. DIMENSIONS-4									
30	ADD DIMENSIONS TO A VIEW. DIMENSIONS-4									
31	ADD DIMENSIONS TO A VIEW. DIMENSIONS-4									
32	ADD DIMENSIONS TO A VIEW. DIMENSIONS-4									
33	ADD DIMENSIONS TO A VIEW. DIMENSIONS-4									
34	ADD DIMENSIONS TO A VIEW. DIMENSIONS-4									
35	ADD DIMENSIONS TO A VIEW. DIMENSIONS-4									
36	ADD DIMENSIONS TO A VIEW. DIMENSIONS-4									
37	ADD DIMENSIONS TO A VIEW. DIMENSIONS-4									
38	ADD DIMENSIONS TO A VIEW. DIMENSIONS-4									
39	ADD DIMENSIONS TO A VIEW. DIMENSIONS-4									
40	ADD DIMENSIONS TO A VIEW. DIMENSIONS-4									
41	ADD DIMENSIONS TO A VIEW. DIMENSIONS-4									
42	ADD DIMENSIONS TO A VIEW. DIMENSIONS-4									
43	ADD DIMENSIONS TO A VIEW. DIMENSIONS-4									
44	ADD DIMENSIONS TO A VIEW. DIMENSIONS-4									
45	ADD DIMENSIONS TO A VIEW. DIMENSIONS-4									
46	ADD DIMENSIONS TO A VIEW. DIMENSIONS-4									
47	ADD DIMENSIONS TO A VIEW. DIMENSIONS-4									
48	ADD DIMENSIONS TO A VIEW. DIMENSIONS-4									
49	ADD DIMENSIONS TO A VIEW. DIMENSIONS-4									
50	ADD DIMENSIONS TO A VIEW. DIMENSIONS-4									
51	ADD DIMENSIONS TO A VIEW. DIMENSIONS-4									
52	ADD DIMENSIONS TO A VIEW. DIMENSIONS-4									
53	ADD DIMENSIONS TO A VIEW. DIMENSIONS-4									
54	ADD DIMENSIONS TO A VIEW. DIMENSIONS-4									
55	ADD DIMENSIONS TO A VIEW. DIMENSIONS-4									
56	ADD DIMENSIONS TO A VIEW. DIMENSIONS-4									
57	ADD DIMENSIONS TO A VIEW. DIMENSIONS-4									
58	ADD DIMENSIONS TO A VIEW. DIMENSIONS-4									
59	ADD DIMENSIONS TO A VIEW. DIMENSIONS-4									
60	ADD DIMENSIONS TO A VIEW. DIMENSIONS-4									
61	ADD DIMENSIONS TO A VIEW. DIMENSIONS-4									
62	ADD DIMENSIONS TO A VIEW. DIMENSIONS-4									
63	ADD DIMENSIONS TO A VIEW. DIMENSIONS-4									
64	ADD DIMENSIONS TO A VIEW. DIMENSIONS-4									
65	ADD DIMENSIONS TO A VIEW. DIMENSIONS-4									
66	ADD DIMENSIONS TO A VIEW. DIMENSIONS-4									
67	ADD DIMENSIONS TO A VIEW. DIMENSIONS-4									
68	ADD DIMENSIONS TO A VIEW. DIMENSIONS-4									
69	ADD DIMENSIONS TO A VIEW. DIMENSIONS-4									
70	ADD DIMENSIONS TO A VIEW. DIMENSIONS-4									
71	ADD DIMENSIONS TO A VIEW. DIMENSIONS-4									
72	ADD DIMENSIONS TO A VIEW. DIMENSIONS-4									
73	ADD DIMENSIONS TO A VIEW. DIMENSIONS-4									
74	ADD DIMENSIONS TO A VIEW. DIMENSIONS-4									
75	ADD DIMENSIONS TO A VIEW. DIMENSIONS-4									
76	ADD DIMENSIONS TO A VIEW. DIMENSIONS-4									
77	ADD DIMENSIONS TO A VIEW. DIMENSIONS-4									
78	ADD DIMENSIONS TO A VIEW. DIMENSIONS-4									
79	ADD DIMENSIONS TO A VIEW. DIMENSIONS-4									
80	ADD DIMENSIONS TO A VIEW. DIMENSIONS-4									
81	ADD DIMENSIONS TO A VIEW. DIMENSIONS-4									
82	ADD DIMENSIONS TO A VIEW. DIMENSIONS-4									
83	ADD DIMENSIONS TO A VIEW. DIMENSIONS-4									
84	ADD DIMENSIONS TO A VIEW. DIMENSIONS-4									
85	ADD DIMENSIONS TO A VIEW. DIMENSIONS-4									
86	ADD DIMENSIONS TO A VIEW. DIMENSIONS-4									
87	ADD DIMENSIONS TO A VIEW. DIMENSIONS-4									
88	ADD DIMENSIONS TO A VIEW. DIMENSIONS-4									
89	ADD DIMENSIONS TO A VIEW. DIMENSIONS-4									
90	ADD DIMENSIONS TO A VIEW. DIMENSIONS-4									
91	ADD DIMENSIONS TO A VIEW. DIMENSIONS-4									
92	ADD DIMENSIONS TO A VIEW. DIMENSIONS-4									
93	ADD DIMENSIONS TO A VIEW. DIMENSIONS-4									
94	ADD DIMENSIONS TO A VIEW. DIMENSIONS-4									
95	ADD DIMENSIONS TO A VIEW. DIMENSIONS-4									
96	ADD DIMENSIONS TO A VIEW. DIMENSIONS-4									
97	ADD DIMENSIONS TO A VIEW. DIMENSIONS-4									
98	ADD DIMENSIONS TO A VIEW. DIMENSIONS-4									
99	ADD DIMENSIONS TO A VIEW. DIMENSIONS-4									
100	ADD DIMENSIONS TO A VIEW. DIMENSIONS-4									



REV	DATE	DESCRIPTION
1	10-10-54	INITIAL DESIGN
2	10-10-54	INITIAL DESIGN
3	10-10-54	INITIAL DESIGN
4	10-10-54	INITIAL DESIGN
5	10-10-54	INITIAL DESIGN

- NOTES
- Conversion coat per MIL-C-2541 Class 2.
 - Deburr and break sharp edges.
 - Weld notch part number and revision approximately where shown.

REV	DESCRIPTION	DATE	BY	CHECK	APP	DATE	BY	CHECK	APP	DATE	BY	CHECK	APP
1	CONTRACT B.C.S. HOLE INSERTS FOR EXHAUST-4-1	6-2-56											
2	REMOVE NON EXHAUST-4-1	1-23-56											
3	REMOVE ALL SURF. FINISHES	11-9-55											
4	REMOVE ALL SURF. FINISHES	5-7-55											



HOLE	QTY	TOLERANCE	DESCRIPTION
Ø 1.975 ± .001	4		Ø 1.975 ± .001 TYP.
Ø 1.980 ± .001	8		Ø 1.980 ± .001 NON DEEP CRANK AND REC X ± .01-.04 HOLLOW TYP. 25 NON DEEP Ø 1/4-.50 LING. 25 CRANK AND RESTRI. EXHAUST LOCKING HOLLOW. P/N 2005-CHONG ON CONT/VL/ST/ASSEMBLY.
Ø 1.975 ± .001	8		Ø 1.975 ± .001 NON DEEP CRANK AND REC X ± .01-.04 HOLLOW TYP. 25 NON DEEP Ø 1/4-.50 LING. 25 CRANK AND RESTRI. EXHAUST LOCKING HOLLOW. P/N 2005-CHONG ON CONT/VL/ST/ASSEMBLY.
Ø 1.980 ± .001	8		Ø 1.980 ± .001 NON DEEP CRANK AND REC X ± .01-.04 HOLLOW TYP. 25 NON DEEP Ø 1/4-.50 LING. 25 CRANK AND RESTRI. EXHAUST LOCKING HOLLOW. P/N 2005-CHONG ON CONT/VL/ST/ASSEMBLY.
Ø 1.980 ± .001	8		Ø 1.980 ± .001 NON DEEP CRANK AND REC X ± .01-.04 HOLLOW TYP. 25 NON DEEP Ø 1/4-.50 LING. 25 CRANK AND RESTRI. EXHAUST LOCKING HOLLOW. P/N 2005-CHONG ON CONT/VL/ST/ASSEMBLY.

- NOTES
1. Conversion Cost per MIL-C-5541 Class 3.
 2. Deburr and break sharp edges.
 3. INSERTS TO BE NON-FERROUS, NON-MAGNETIC.
 4. AFTER FINISH INSTALL INSERTS .75-1.5 PITCH BELOW SURFACE REMOVE AND DISCARD TANG IF APPLICABLE.
 5. WELD FREE AREA.
 6. DATUMS B, C, AND D FLATNESS AND PERPENDICULARITY PERTAIN TO THE 7 INCH DIAMETER SPOTFACE SHOWN.
 7. VIBROTECH PART NUMBER AND REVISION .25" HIGH, APPROX. WHERE SHOWN.

PEM PZT SHAKER PLATE

CALIFORNIA INSTITUTE OF TECHNOLOGY

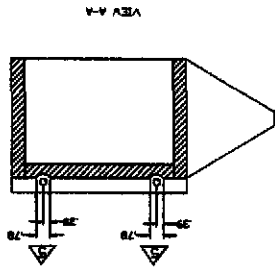
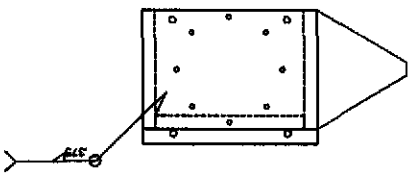
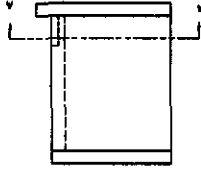
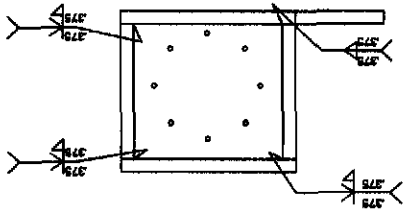
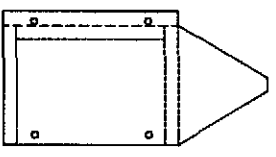
0970268-B-2-H

REV	DESCRIPTION	DATE	BY	CHECK	APP	CC	VF	CD	DN	LT	RET	SEC	STS	DATE	BY	DESCRIPTION	REV	DATE	BY	DESCRIPTION
02	REV-RELEASE	5-7-97	MJS																	
01	REV-RELEASE	11-8-97	MJS																	
00	RELEASE	1-22-98	MJS																	
03	CONNECT REC. HOLE BORETS FOR EXHAUST-9-H	6-2-98	MJS																	

PM, PZT SHAKER PLATE

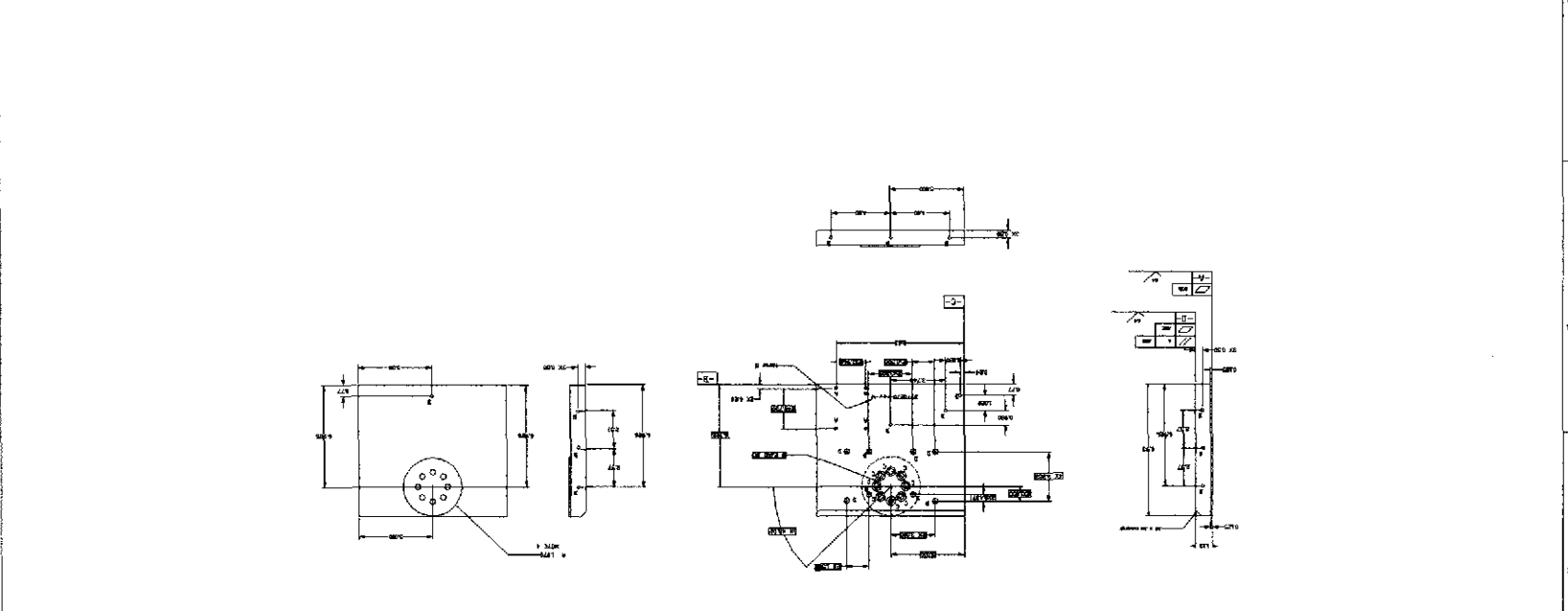
CALIFORNIA INSTITUTE OF TECHNOLOGY
 MASSACHUSETTS INSTITUTE OF TECHNOLOGY

FINISHED SURFACE HAS
 REMOVE CORNERS IN OUT
 TOLERANCES
 UNLESS OTHERWISE SPECIFIED



Education Version Only
 Not For Commercial Use

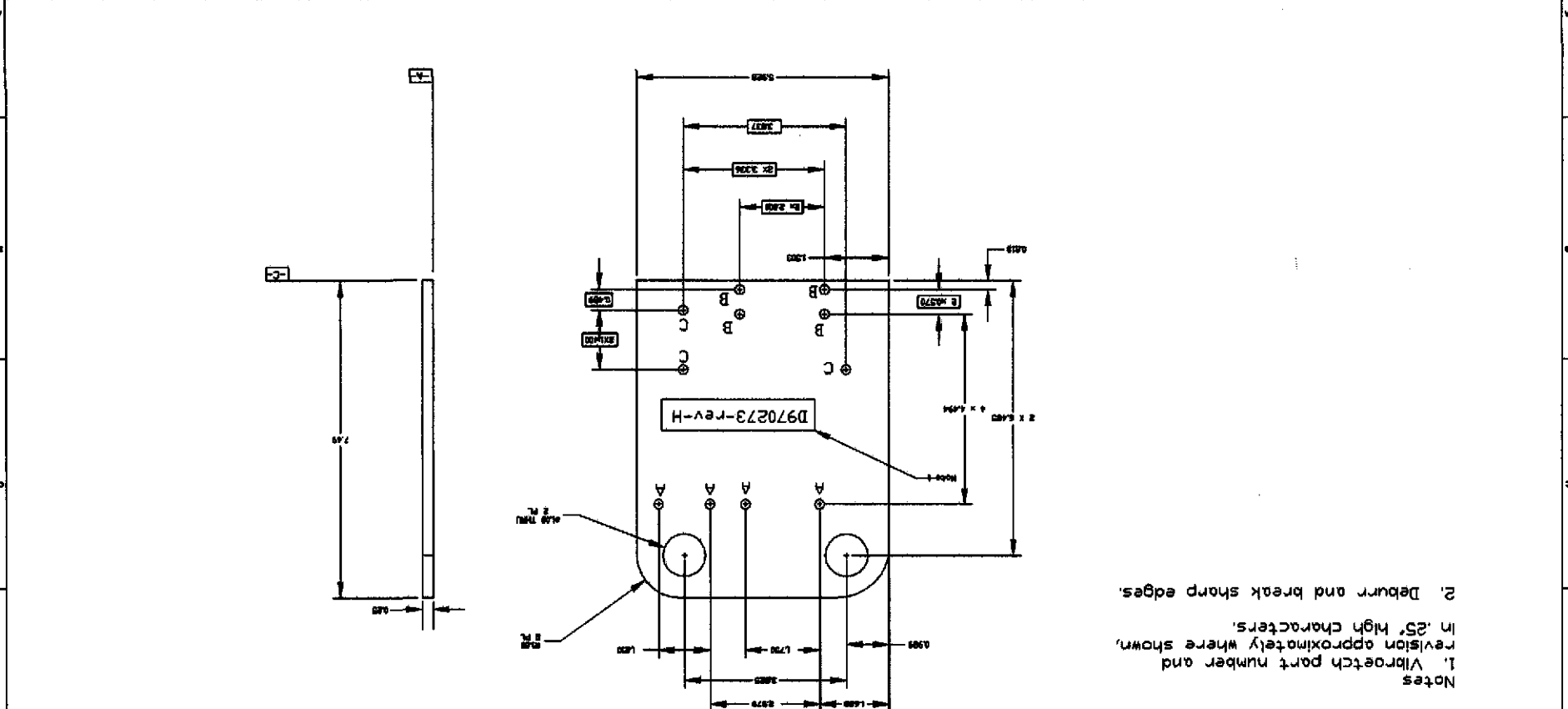
REV	DESCRIPTION	DATE	BY	CHKD	APP	DATE	BY	CHKD	APP
00	PRELIMINARY								
01	REVISION								
02	REVISION								
03	REVISION								
04	REVISION								
05	REVISION								
06	REVISION								
07	REVISION								
08	REVISION								
09	REVISION								
10	REVISION								
11	REVISION								
12	REVISION								
13	REVISION								
14	REVISION								
15	REVISION								
16	REVISION								
17	REVISION								
18	REVISION								
19	REVISION								
20	REVISION								



HOLE	QTY	TOLERANCE	DESCRIPTION
A	4	± 0.0125	DRILL # 144 - 150.532 MIN DEEP, CSK R 120 +/- 0 DEG X # 145 - 121 HELL-COLL TAP 21 MIN DP, # 146-38 UNC-38 CSK AND INITIAL EXHAUST LOOKING HELI-COLL P/N 8585-662876 OR EQUIVALENT
B	13	± 0.0125	DRILL # 198 - 264.568 MIN DEEP, CSK R 120 +/- 0 DEG X # 23 - 25 HELL-COLL TAP 22 MIN DP, # 198-38 UNC-38 15% SCRAP OR EQUIVALENT
C	8	± 0.0125	DRILL # 418 MIN, CHORE # 75.55 DEEP, HELIXIDE DRILL # 207 - 200.207 MIN DEEP, CSK R 120 +/- 0 DEG X # 142 - 42 HELL-COLL TAP 19 MIN DP, # 207-38 UNC-38 CSK AND INITIAL EXHAUST NON-LOOKING HELI-COLL P/N 1195-628790 OR EQUIVALENT
D	8	± 0.0125	

- NOTES
- Conversion Coat per MIL-C-5541 Class 3.
 - Deburr and break sharp edges.
 - After finish heat treats 73-150 Fitch Below the surface. Remove and discard the Tang if applicable.
 - Filets to be R03 MAX.
 - Vibroetch part Number and rev in 257.
 - High characters approx. where shown.

REV	NO	DESCRIPTION	DATE	BY	CHKD	APP'D	REVISIONS
01	01	PROPOSED	07-97	NJS			
02	01	REVISED FOR EMBROS-04	11-97	NJS			
03	01	REVISED FOR EMBROS-04	11-97	NJS			
04	01	REVISED FOR EMBROS-04	11-97	NJS			
05	01	REVISED FOR EMBROS-04	11-97	NJS			
06	01	REVISED FOR EMBROS-04	11-97	NJS			
07	01	REVISED FOR EMBROS-04	11-97	NJS			
08	01	REVISED FOR EMBROS-04	11-97	NJS			
09	01	REVISED FOR EMBROS-04	11-97	NJS			
10	01	REVISED FOR EMBROS-04	11-97	NJS			
11	01	REVISED FOR EMBROS-04	11-97	NJS			
12	01	REVISED FOR EMBROS-04	11-97	NJS			
13	01	REVISED FOR EMBROS-04	11-97	NJS			
14	01	REVISED FOR EMBROS-04	11-97	NJS			
15	01	REVISED FOR EMBROS-04	11-97	NJS			
16	01	REVISED FOR EMBROS-04	11-97	NJS			
17	01	REVISED FOR EMBROS-04	11-97	NJS			
18	01	REVISED FOR EMBROS-04	11-97	NJS			
19	01	REVISED FOR EMBROS-04	11-97	NJS			
20	01	REVISED FOR EMBROS-04	11-97	NJS			



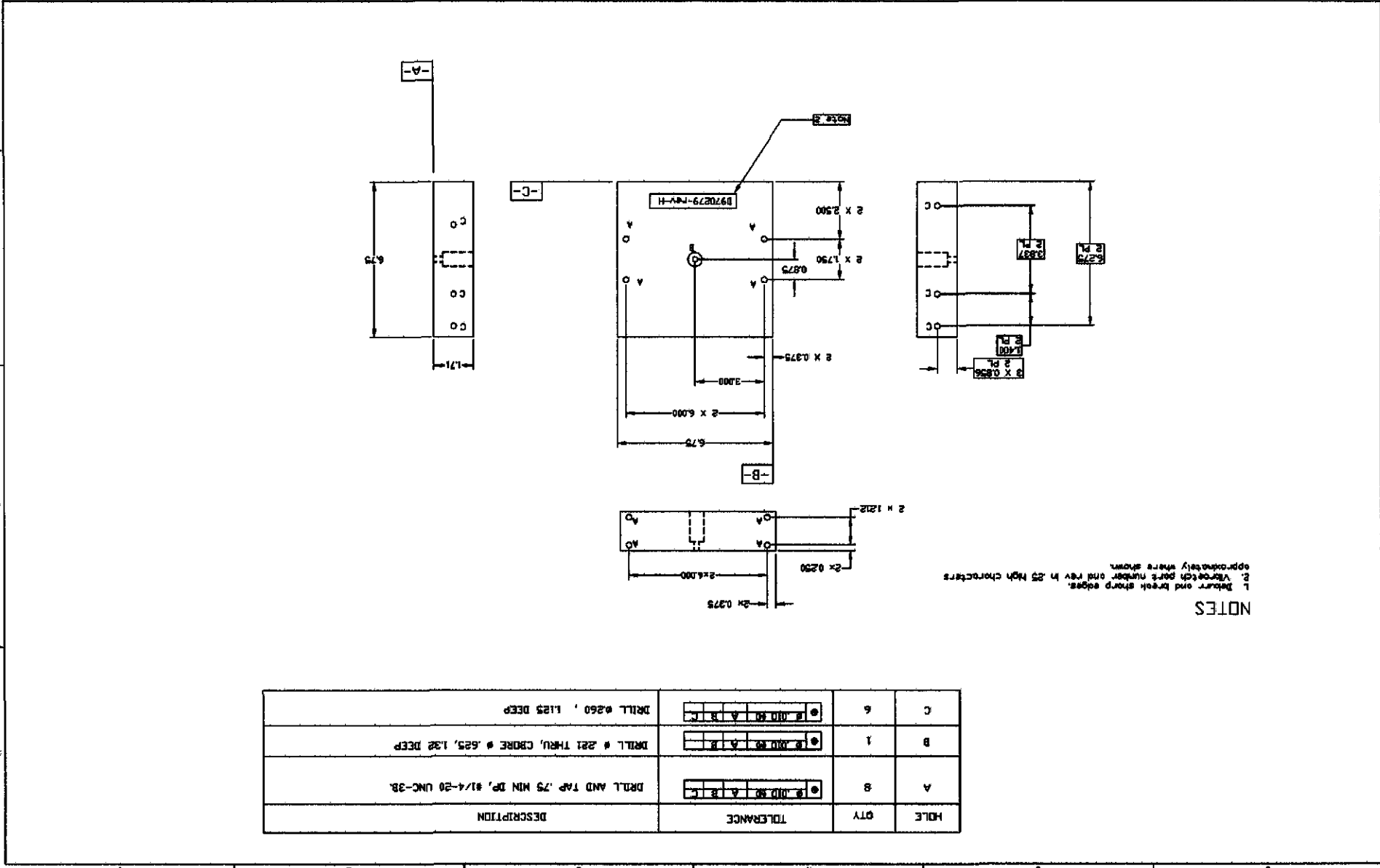
HOLE	QTY	TOLERANCE	DESCRIPTION
A	4	±.010 RA A B C	DRILL AND TAP FOR 1/4-20, THRU
B	4	±.010 RA A B C	DRILL THRU .206 Ø
C	3	±.010 RA A B C	DRILL THRU .316Ø

Notes
 1. Vibroetch part number and revision approximately where shown, in .25" high characters.
 2. Deburr and break sharp edges.

REV	NO	DESCRIPTION	DATE	BY	CHKD	APP'D	REVISIONS
01	01	PROPOSED	07-97	NJS			
02	01	REVISED FOR EMBROS-04	11-97	NJS			
03	01	REVISED FOR EMBROS-04	11-97	NJS			
04	01	REVISED FOR EMBROS-04	11-97	NJS			
05	01	REVISED FOR EMBROS-04	11-97	NJS			
06	01	REVISED FOR EMBROS-04	11-97	NJS			
07	01	REVISED FOR EMBROS-04	11-97	NJS			
08	01	REVISED FOR EMBROS-04	11-97	NJS			
09	01	REVISED FOR EMBROS-04	11-97	NJS			
10	01	REVISED FOR EMBROS-04	11-97	NJS			
11	01	REVISED FOR EMBROS-04	11-97	NJS			
12	01	REVISED FOR EMBROS-04	11-97	NJS			
13	01	REVISED FOR EMBROS-04	11-97	NJS			
14	01	REVISED FOR EMBROS-04	11-97	NJS			
15	01	REVISED FOR EMBROS-04	11-97	NJS			
16	01	REVISED FOR EMBROS-04	11-97	NJS			
17	01	REVISED FOR EMBROS-04	11-97	NJS			
18	01	REVISED FOR EMBROS-04	11-97	NJS			
19	01	REVISED FOR EMBROS-04	11-97	NJS			
20	01	REVISED FOR EMBROS-04	11-97	NJS			

REV	DESCRIPTION	DATE	BY	CHKD	APPV	DATE	DESCRIPTION	DATE	BY	CHKD	APPV	DATE	DESCRIPTION
1	REVISED SURFACE PMS 100	1-23-98	NJS										
2	REMOVE ALL SURFS	1-27-98	NJS										
3	REMOVE AND PATCH FOR DIMENSIONS	2-17-98	NJS										
4	REMOVE	2-17-98	NJS										
5	REMOVE	1-23-98	NJS										

TOLERANCES UNLESS OTHERWISE SPECIFIED
 DIMENSIONS ARE IN INCHES
 FINISHES
 FACED SURFACE ±.010
 ANGULAR ±.10
 THREE PLACE DECIMAL ±.005
 TYP PLACE DECIMAL ±.01
 REMOVE ALL SURFS
 REMOVE AND PATCH FOR DIMENSIONS
 REMOVE



NOTES
 1. Detail and break sharp edges.
 2. Veneer part number and rev in 25 high characters
 approximately where shown.

HOLE	QTY	TOLERANCE	DESCRIPTION
A	8	±.010 DIA ±.010	DRILL AND TAP .75 MIN DP, #1/4-20 UNC-3B
B	1	±.010 DIA ±.010	DRILL # .251 THRU, CORE # .625, 1.32 DEEP
C	6	±.010 DIA ±.010	DRILL #.260, 1.125 DEEP

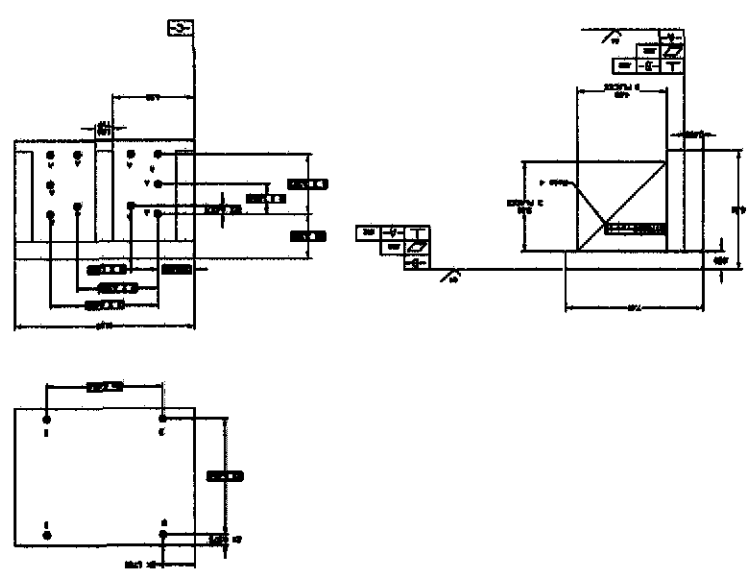
REV	DESCRIPTION	DATE	BY	CHKD	APPV	DATE	DESCRIPTION
1	REVISED SURFACE PMS 100	1-23-98	NJS				
2	REMOVE ALL SURFS	1-27-98	NJS				
3	REMOVE AND PATCH FOR DIMENSIONS	2-17-98	NJS				
4	REMOVE	2-17-98	NJS				
5	REMOVE	1-23-98	NJS				

CALIFORNIA INSTITUTE OF TECHNOLOGY
 PASADENA, CALIFORNIA 91125
 D9170279-C-H

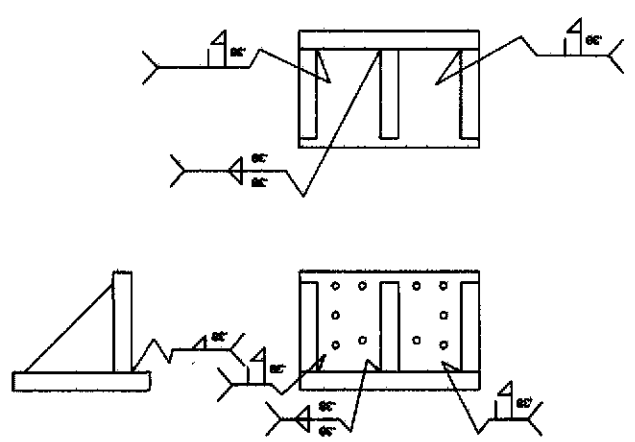
REV	DESCRIPTION	DATE	BY	CHKD	APP'D	REV	DESCRIPTION	DATE	BY	CHKD	APP'D
01	ISSUE FOR FABRICATION	5-7-57	MJS			01	ISSUE FOR FABRICATION	5-7-57	MJS		
02	REVISED FOR BUREAU OF STANDARDS	11-8-57	MJS			02	REVISED FOR BUREAU OF STANDARDS	11-8-57	MJS		
03	REVISED FOR BUREAU OF STANDARDS	1-24-58	MJS			03	REVISED FOR BUREAU OF STANDARDS	1-24-58	MJS		
04	REVISED FOR BUREAU OF STANDARDS	1-27-58	MJS			04	REVISED FOR BUREAU OF STANDARDS	1-27-58	MJS		
05	REVISED FOR BUREAU OF STANDARDS	1-27-58	MJS			05	REVISED FOR BUREAU OF STANDARDS	1-27-58	MJS		

DRAWING TITLE: PERM. SUPPORT PLATE
 PROJECT: CALIFORNIA INSTITUTE OF TECHNOLOGY
 DRAWING NO.: D 970288-C-H
 SHEET NO.: 1 OF 1

MACHINE VIEW



WELD VIEW



HOLE	QTY	TOLERANCE	DESCRIPTION
3	4	±0.005	Ø 1/8" ±0.005
4	4	±0.005	Ø 1/8" ±0.005

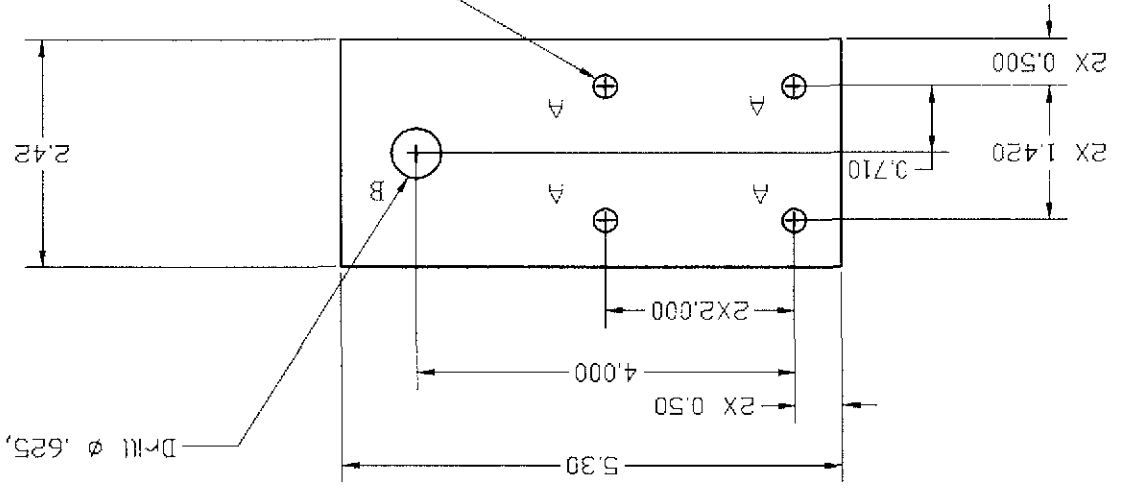
- NOTES
1. Conversion Coat per MIL-C-5541 Class 3.
 2. Deburr and break sharp edges.
 3. AFTER FINISH, REMOVE AND DISCARD THE TANGS IF APPLICABLE.
 4. Wrench part number and rev in 25' approximately where shown.

SCALE FULL		SHEET 1 of 1		D980303-A-H	
DRAWN BY: A-HAND		DATE: 5-98		SMITH 6-98	
CHECKED BY: [blank]		DATE: [blank]		[blank]	
TITLE: FLOOR PLAN		PROJECT: PFM STAY CLEAR ZONE		CALIFORNIA INSTITUTE OF TECHNOLOGY	
MATERIALS LIST		PARTS AND MATERIAL LIST		REF ID: [blank]	

3/4" thick

Drill and Tap 1/4-20, STI, Thru
4 Places

Drill ϕ .625, Thru



NOTES

