

PROCESS SYSTEMS INTERNATIONAL DOCUMENT REVIEW CHECKLIST

PROJECT NAME: _____
PSI DOC. NO. _____

CHK	BY / DATE
_____ PROJECT ENG	<u>Am 5/24/97</u>
_____ MECHANICAL	_____
_____ STRESS	_____
_____ ELECTRICAL	_____
_____ PROCESS	_____
_____ MFG. ENG.	_____
_____ MANUF	_____
_____ Q.A.	_____
_____ DRAFTING	<u>RZG 5/21/97</u>

PROCESS SYSTEMS INTERNATIONAL DOCUMENT APPROVAL CHECKLIST

PROJECT NAME: L190
PSI DOC. NO. V049-8-673

NOTE: THIS REVIEW DOES NOT RELIEVE THE SELLER OR CONTRACTOR OF ANY OBLIGATIONS UNDER THE P.O. OR CONTRACT.

- FA = FINAL APPROVAL
- AS = APP'D AS NOTED - REVISE & RESUBMIT
- AF = APPROVED FOR FABRICATION
- NA = NOT APPROVED
- RP = RELEASED FOR PROCUREMENT OF MATERIALS ONLY
- RR = REVISE & RESUBMIT

BY [Signature] DATE 5/27/97

MAY 01 1997

VENDOR NAME:	<u>Fisher Controls</u>
REVISION NO:	<u>-</u>
SUBMITTAL NO.:	<u>1</u>
STATUS:	<u>rev/app</u>

Fisher Controls International, Inc.
Marshalltown, Iowa 50158

APR 30 1997

DOCUMENTATION SUBMITTAL

CUSTOMER PO: 556879		CUSTOMER NAME: PROCESS SYSTEMS INTERNATIONAL INC	
ORDER NUMBER: 002 -A019005741	PROJECT NUMBER: 9514906	PROJECT TYPE: OEM	

CUST NMB/ SHIP TO: 00106335/000
PROCESS SYSTEMS INTERNATIONAL INC
20 WALKUP DRIVE
WESTBORO, MASS 01581

DATE MAILED:
APR 25 1997

LIGO VS9049

GENERAL INSTRUCTIONS:

DRAWING STATUS

- Enclosed is your initial submittal request for documentation.
- These prints are for dimensional information only.
- For specifications, see factory acknowledgements.
- Reply to: NEW ENGLAND CONTROLS, INC.

FILE COPY
 FOR REVIEW/APPROVAL REQUIRED

QTY	DOCUMENT REQUIRED
5	RECOMMENDED SPARE PARTS PRICE LISTS, FURNISHED AND MAILED BY FACTORY. INSTRUCTION MANUALS AND PARTS LISTS BEING MAILED SEPARATELY
5	TYPE I DRAWING, BOND PRINT.

ITEM NBR: 000001 SERIAL NBR: 0014522513-18
TAGS: PSV425 PSV260 PSV525 PSV360 PSV725 PSV825
DESCRIPTION: TYPE 289H PRESSURE RELIEF VALVE SIZE 1, TYPE DEGREASING

ITEM NBR: 000002 SERIAL NBR: 0014522519-20
TAGS: PSV175 PSV675
DESCRIPTION: TYPE 289H PRESSURE RELIEF VALVE SIZE 2, TYPE DEGREASING

ITEM NBR: 000003 SERIAL NBR: 0014523565-70
TAGS: PCV426 PCV261 PCV526 PCV361 PCV726 PCV826
DESCRIPTION: TYPE S202H REGULATOR SIZE 1 1/2, TYPE DEGREASING

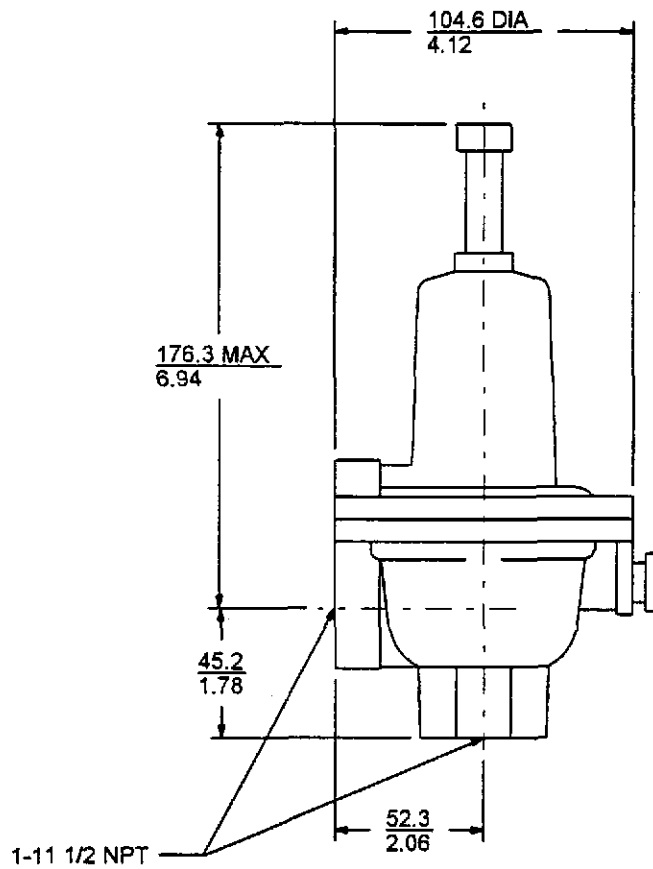
ITEM NBR: 000004 SERIAL NBR: 0014523571-72
TAGS: PCV184 PCV684
DESCRIPTION: TYPE S202H REGULATOR SIZE 2, TYPE DEGREASING

MAY 01 1997

PSI DWG # V049-8-673

Purpose of drawing is for dimensional reference only.

Total Calculated Assembly Weight: 4 lb



TAGS: PSV425,PSV260,PSV525,PSV360,
PSV725,PSV825

Unit of Measure = inches, scale=none. Envelope Dimensions are +/- .25. Face to Face Tolerance per ANSI.

4/24/97 Dimension Certified Correct By Fisher Controls

© 1997 Fisher Controls Int. Inc.

FISHER-ROSEMOUNT

1 IN 289H NPT

CUSTOMER: PROCESS SYSTEMS INTERNATIONAL INC

CUST REF #: 556879

TAG NO: SEE ABOVE

FISHER REF #: 002-A019005741

ITEM NO: 001

REV:

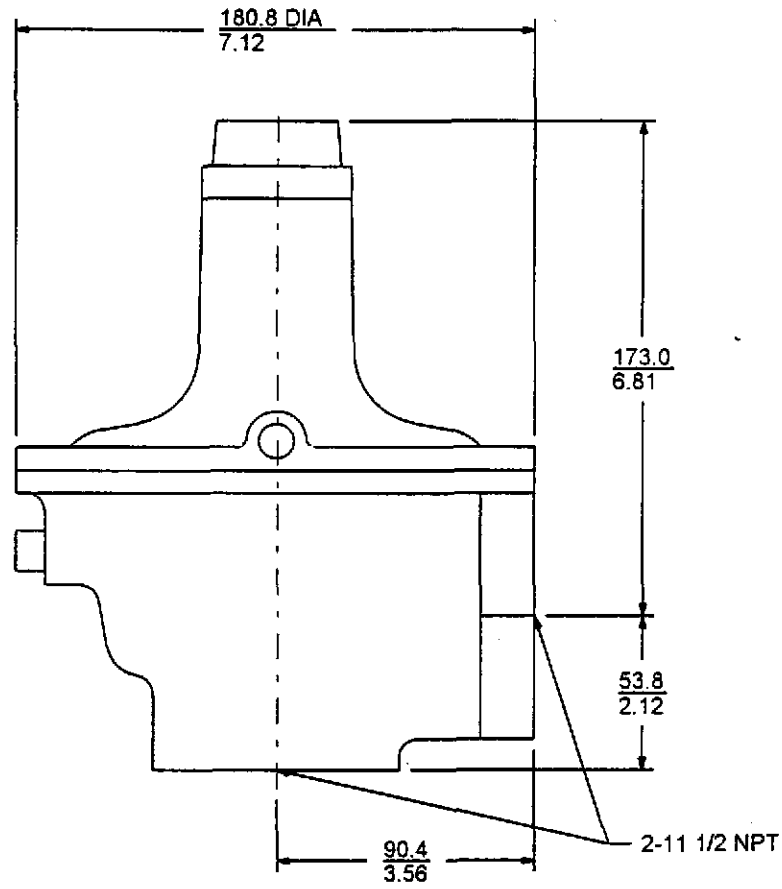
AR = Actuator Removal Clearance

R1.2.1-1.2.13-1.131-123-0



Purpose of drawing is for dimensional reference only.

Total Calculated Assembly Weight: 4 lb



Unit of Measure = inches, scale=none. Envelope Dimensions are +/- .25. Face to Face Tolerance per ANSI.

4/24/97 Dimension Certified Correct By Fisher Controls

© 1997 Fisher Controls Intl. Inc.

FISHER-ROSEMOUNT

2 IN 289H NPT

CUSTOMER: PROCESS SYSTEMS INTERNATIONAL INC

CUST REF #: 556879

TAG NO: PSV175 PSV675

FISHER REF #: 002-A019005741

ITEM NO: 002

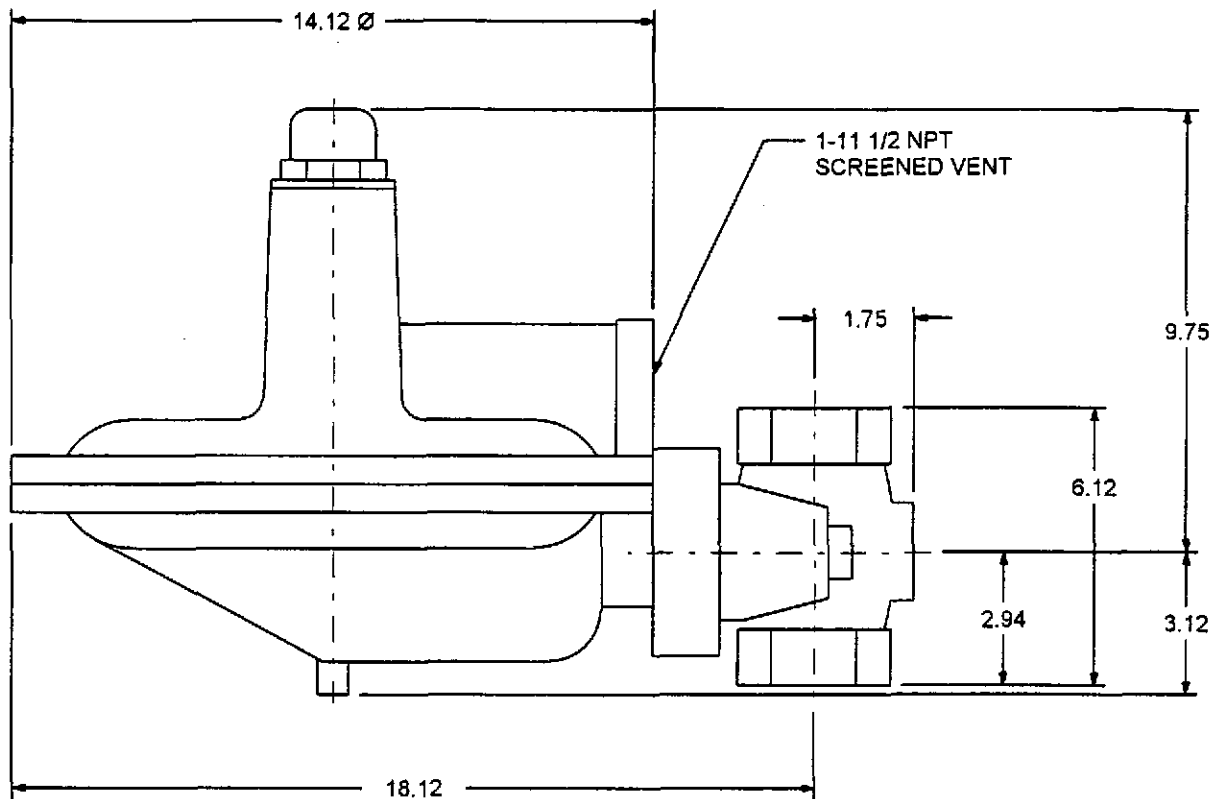
REV:

AR = Actuator Removal Clearance

R1.2.1-1.2.13-1.131-124-0

Purpose of drawing is for dimensional reference only.

Total Calculated Assembly Weight: 21 lb



TAGS: PCV426,PCV261,PCV526,PCV361,
PCV726,PCV826

Unit of Measure = inches, scale=none. Envelope Dimensions are +/- .25. Face to Face Tolerance per ANSI.

4/24/97 Dimension Certified Correct By Fisher Controls

© 1997 Fisher Controls Intl. Inc.

FISHER-ROSEMOUNT

1 1/2 IN S202H 250 NPT

CUSTOMER: PROCESS SYSTEMS INTERNATIONAL INC

CUST REF #: 556879

TAG NO: SEE ABOVE

AR = Actuator Removal Clearance

FISHER REF #: 002-A019005741

ITEM NO: 003

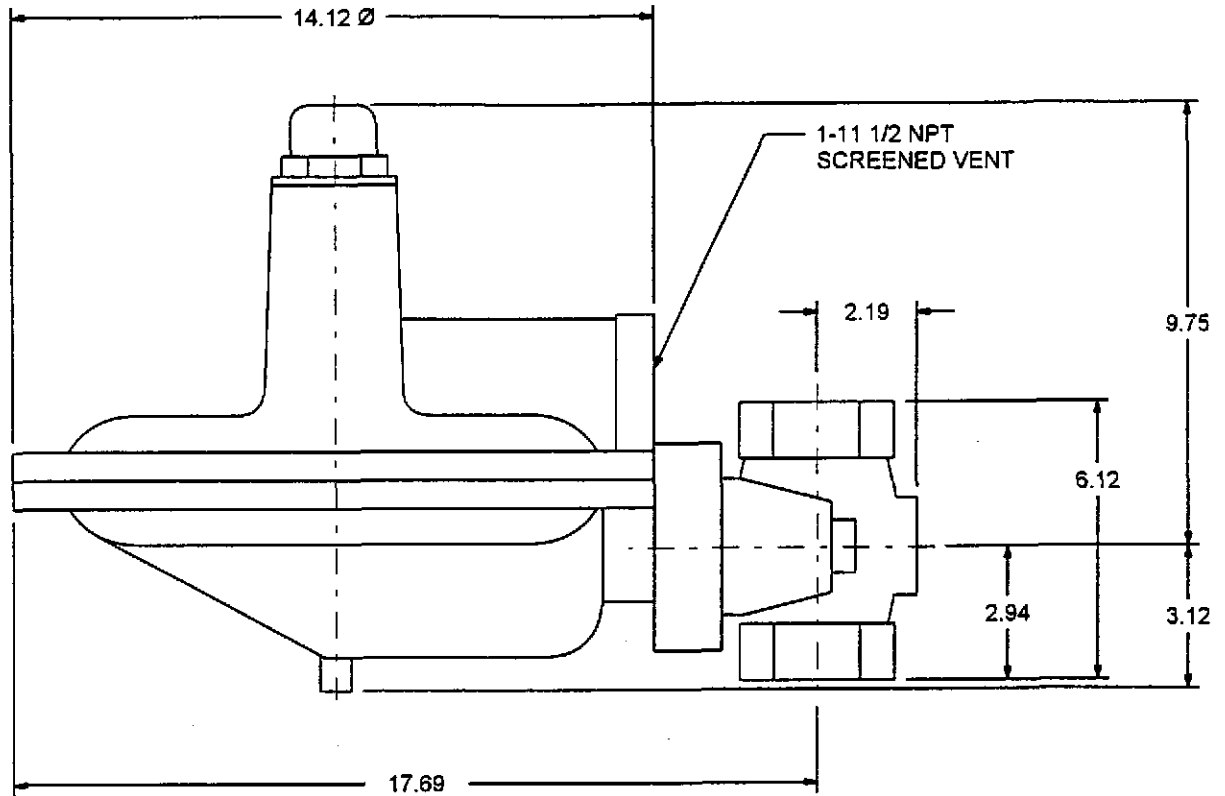
REV:

R1.2.1-1.2.13-1.131-1122-0



Purpose of drawing is for dimensional reference only.

Total Calculated Assembly Weight: 21 lb



Unit of Measure = inches, scale=none. Envelope Dimensions are +/- .25. Face to Face Tolerance per ANSI.

4/24/97 Dimension Certified Correct By Fisher Controls

© 1997 Fisher Controls Intl. Inc.

FISHER-ROSEMOUNT

2 IN S202H 250 NPT

CUSTOMER: PROCESS SYSTEMS INTERNATIONAL INC

CUST REF #: 556879

TAG NO: PCV184 PCV684

FISHER REF #: 002-A019005741

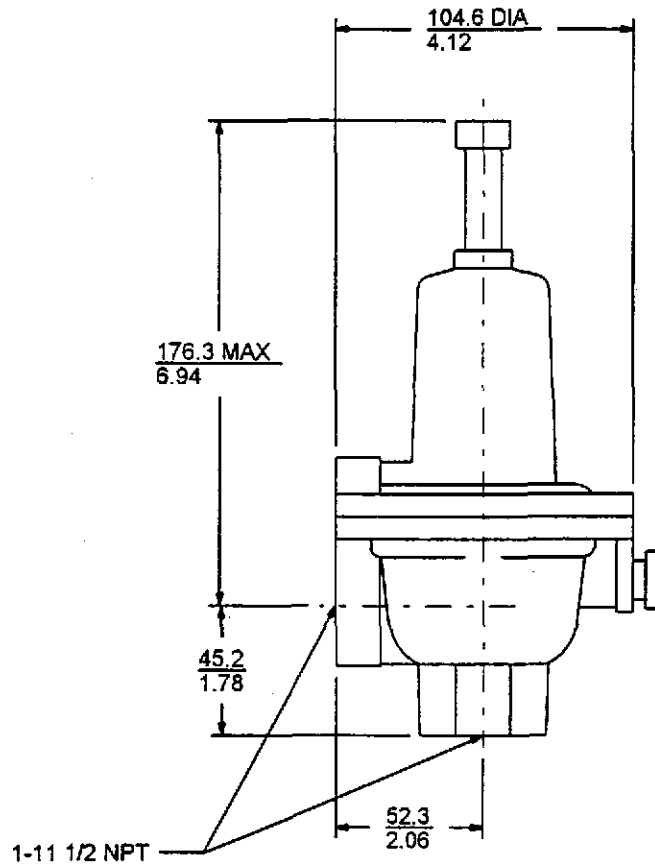
ITEM NO: 004 REV:

AR = Actuator Removal Clearance

R1.2.1-1.2.13-1.131-1126-0

Purpose of drawing is for dimensional reference only.

Total Calculated Assembly Weight: 4 lb



TAGS: PSV425,PSV260,PSV525,PSV360,
PSV725,PSV825

Unit of Measure = inches, scale=none. Envelope Dimensions are +/- .25. Face to Face Tolerance per ANSI.

4/24/97 Dimension Certified Correct By Fisher Controls

© 1997 Fisher Controls Intl. Inc.

FISHER-ROSEMOUNT

1 IN 289H NPT

CUSTOMER: PROCESS SYSTEMS INTERNATIONAL INC
CUST REF #: 556879
TAG NO: SEE ABOVE

AR = Actuator Removal Clearance

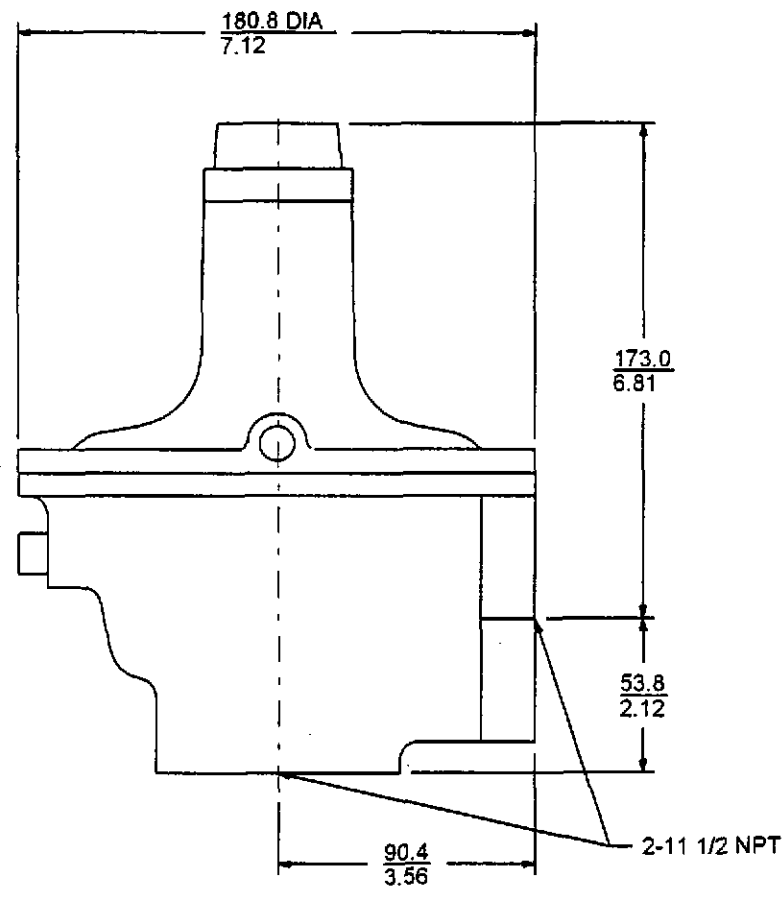
FISHER REF #: 002-A019005741
ITEM NO: 001 REV:

R1.2.1-1.2.13-1.131-123-0



Purpose of drawing is for dimensional reference only.

Total Calculated Assembly Weight: 4 lb



Unit of Measure = inches, scale=none. Envelope Dimensions are +/- .25. Face to Face Tolerance per ANSI.
4/24/97 Dimension Certified Correct By Fisher Controls © 1997 Fisher Controls Int'l. Inc.

FISHER-ROSEMOUNT

2 IN 289H NPT

CUSTOMER: PROCESS SYSTEMS INTERNATIONAL INC
CUST REF #: 556879
TAG NO: PSV175 PSV675

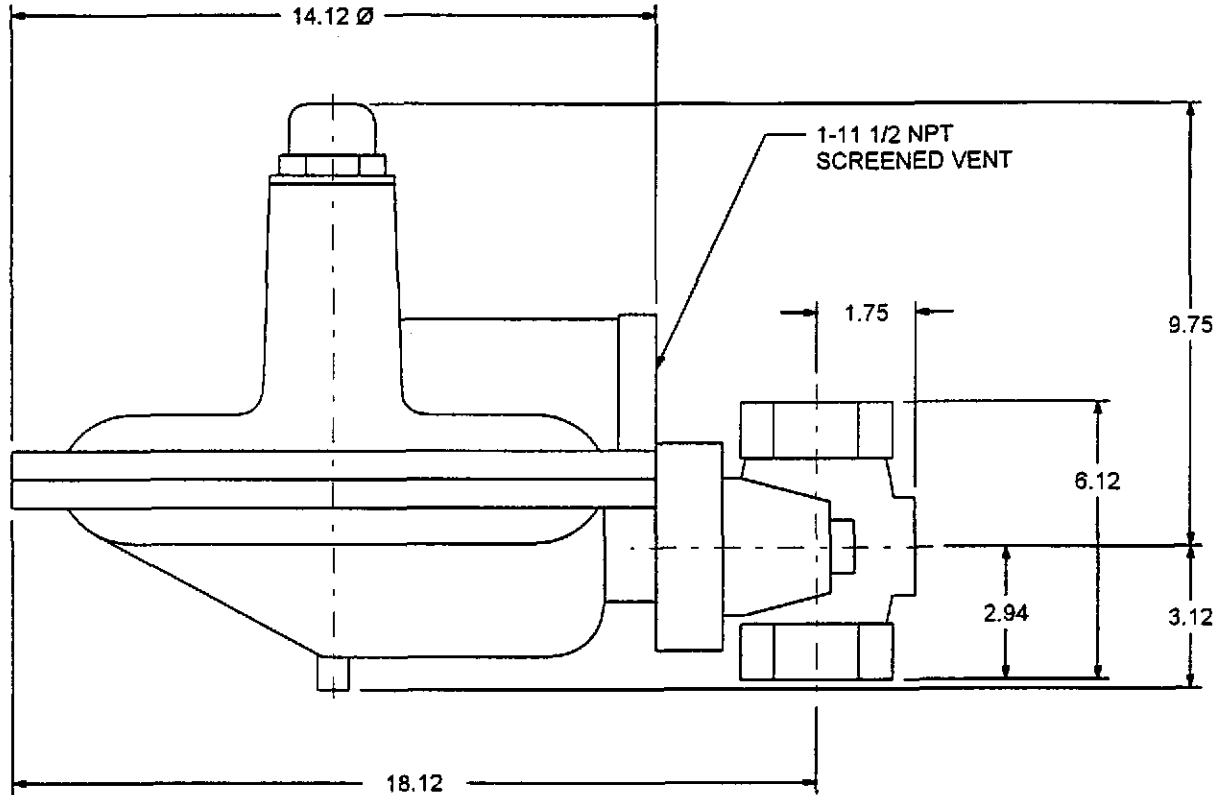
AR = Actuator Removal Clearance

FISHER REF #: 002-A019005741
ITEM NO: 002 REV:

R1.2.1-1.2.13-1.131-124-0

Purpose of drawing is for dimensional reference only.

Total Calculated Assembly Weight: 21 lb



TAGS: PCV426,PCV261,PCV526,PCV361,
PCV726,PCV826

Unit of Measure = inches, scale=none. Envelope Dimensions are +/- .25. Face to Face Tolerance per ANSI.
4/24/97 Dimension Certified Correct By Fisher Controls © 1997 Fisher Controls Intl. Inc. FISHER-ROSEMOUNT

1 1/2 IN S202H 250 NPT

CUSTOMER: PROCESS SYSTEMS INTERNATIONAL INC
CUST REF #: 556879
TAG NO: SEE ABOVE

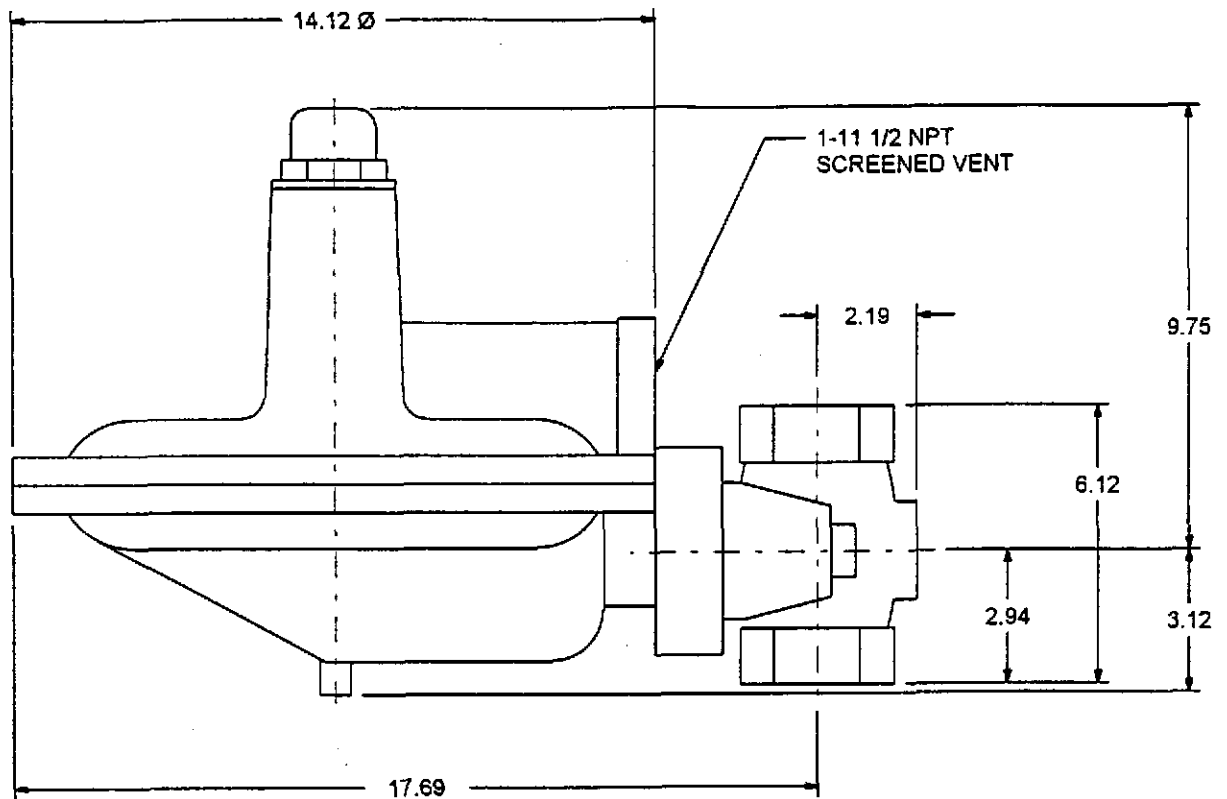
AR = Actuator Removal Clearance

FISHER REF #: 002-A019005741
ITEM NO: 003 REV:

R1.2.1-1.2.13-1.131-1122:0

Purpose of drawing is for dimensional reference only.

Total Calculated Assembly Weight: 21 lb



Unit of Measure = inches, scale=none. Envelope Dimensions are +/- .25. Face to Face Tolerance per ANSI.
 4/24/97 Dimension Certified Correct By Fisher Controls © 1997 Fisher Controls Intl. Inc.

FISHER-ROSEMOUNT

2 IN S202H 250 NPT

CUSTOMER: PROCESS SYSTEMS INTERNATIONAL INC
 CUST REF #: 556879
 TAG NO: PCV184 PCV684

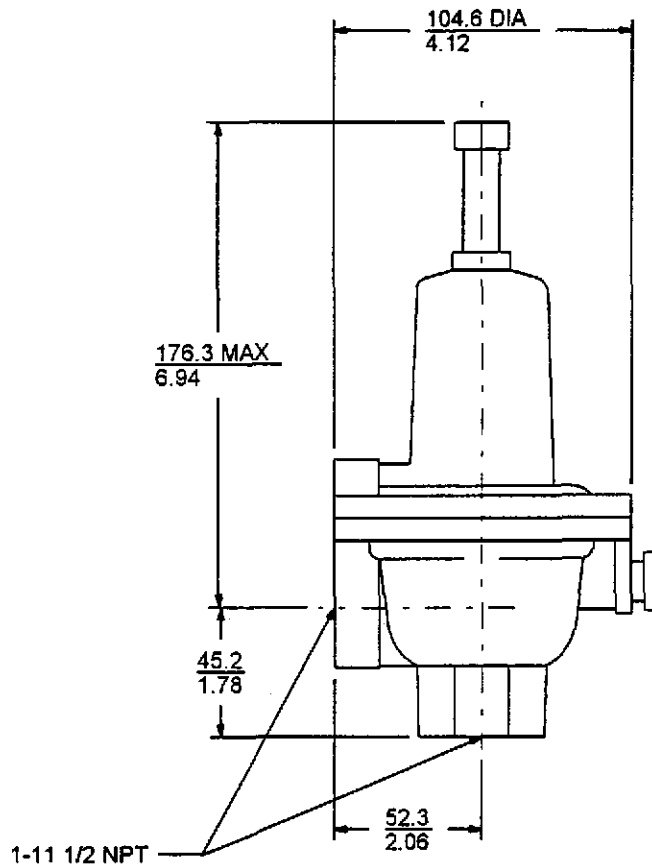
AR = Actuator Removal Clearance

FISHER REF #: 002-A019005741
 ITEM NO: 004 REV:

R1.2.1-1.2.13-1.131-1128-0

Purpose of drawing is for dimensional reference only.

Total Calculated Assembly Weight: 4 lb



TAGS: PSV425,PSV260,PSV525,PSV360,
PSV725,PSV825

Unit of Measure = inches, scale=none. Envelope Dimensions are +/- .25. Face to Face Tolerance per ANSI.
4/24/97 Dimension Certified Correct By Fisher Controls

© 1997 Fisher Controls Intl. Inc.

FISHER-ROSEMOUNT

1 IN 289H NPT

CUSTOMER: PROCESS SYSTEMS INTERNATIONAL INC
CUST REF #: 556879
TAG NO: SEE ABOVE

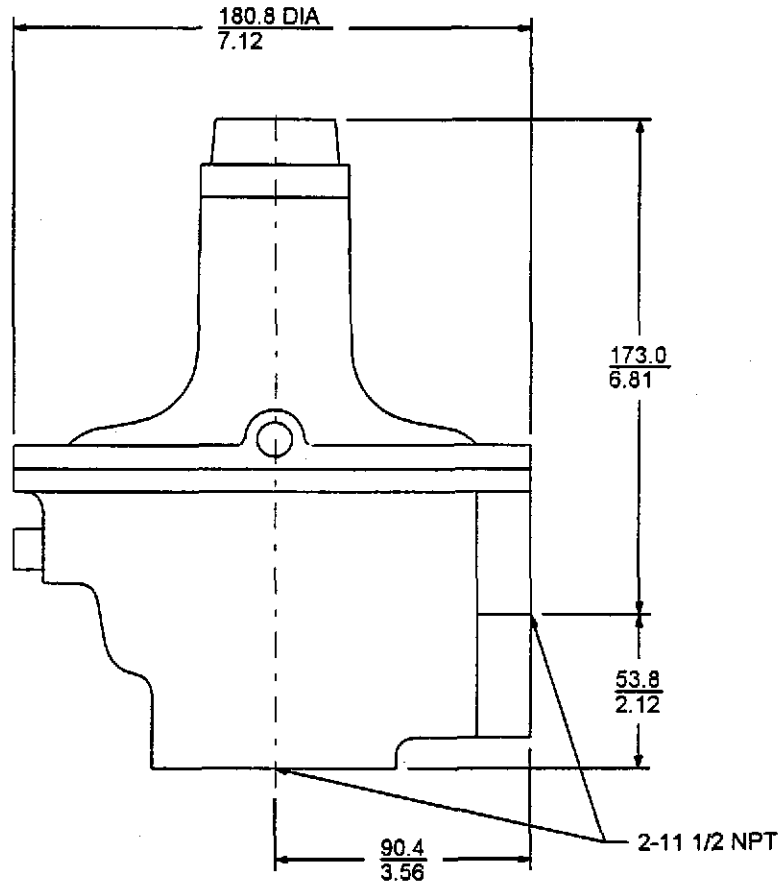
AR = Actuator Removal Clearance

FISHER REF #: 002-A019005741
ITEM NO: 001 REV:

R1.2.1-1.2.13-1.131-123-0

Purpose of drawing is for dimensional reference only.

Total Calculated Assembly Weight: 4 lb



Unit of Measure = inches, scale=none. Envelope Dimensions are +/- .25. Face to Face Tolerance per ANSI.

4/24/97 Dimension Certified Correct By Fisher Controls

© 1997 Fisher Controls Intl. Inc.

FISHER-ROSEMOUNT

2 IN 289H NPT

CUSTOMER: PROCESS SYSTEMS INTERNATIONAL INC

CUST REF #: 556879

TAG NO: PSV175 PSV675

FISHER REF #: 002-A019005741

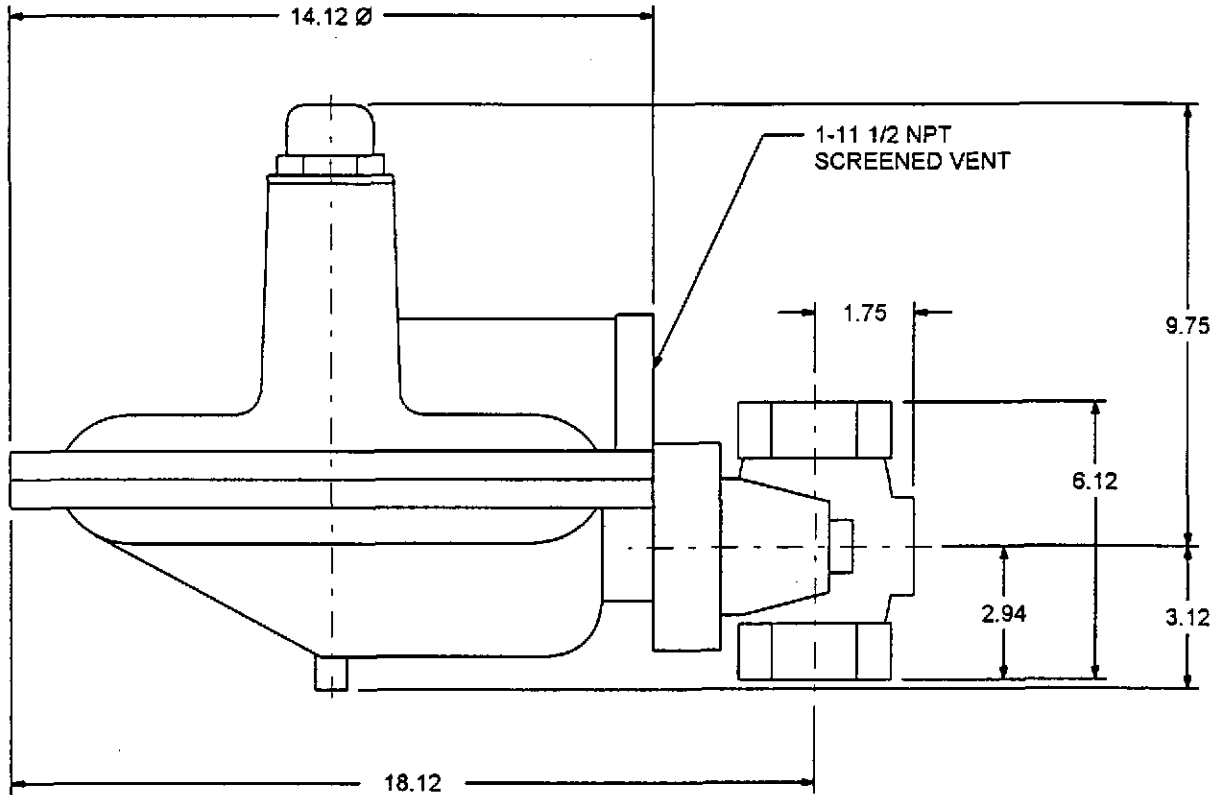
ITEM NO: 002 REV:

AR = Actuator Removal Clearance

R1.2.1-1.2.13-1.131-124-0

Purpose of drawing is for dimensional reference only.

Total Calculated Assembly Weight: 21 lb



TAGS: PCV426,PCV261,PCV526,PCV361,
PCV726,PCV826

Unit of Measure = inches, scale=none. Envelope Dimensions are +/- .25. Face to Face Tolerance per ANSI.
4/24/97 Dimension Certified Correct By Fisher Controls

© 1997 Fisher Controls Intl. Inc.

FISHER-ROSEMOUNT

1 1/2 IN S202H 250 NPT

CUSTOMER: PROCESS SYSTEMS INTERNATIONAL INC
CUST REF #: 556879
TAG NO: SEE ABOVE

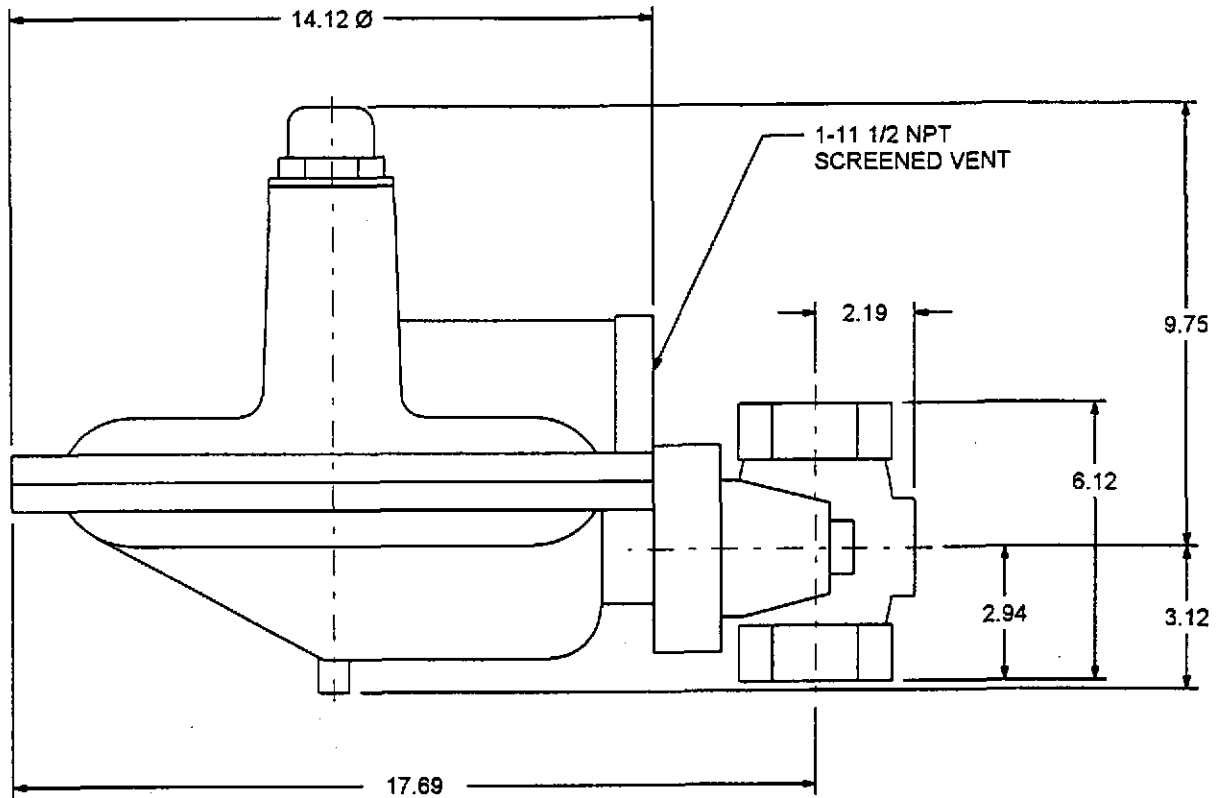
AR = Actuator Removal Clearance

FISHER REF #: 002-A019005741
ITEM NO: 003 REV:

R1.2.1-1.2.13-1.131-1122-0

Purpose of drawing is for dimensional reference only.

Total Calculated Assembly Weight: 21 lb



Unit of Measure = inches, scale=none. Envelope Dimensions are +/- .25. Face to Face Tolerance per ANSI.
 4/24/97 Dimension Certified Correct By Fisher Controls © 1997 Fisher Controls Intl. Inc.

FISHER-ROSEMOUNT

2 IN S202H 250 NPT

CUSTOMER: PROCESS SYSTEMS INTERNATIONAL INC

CUST REF #: 556879

TAG NO: PCV184 PCV684

FISHER REF #: 002-A019005741

AR = Actuator Removal Clearance

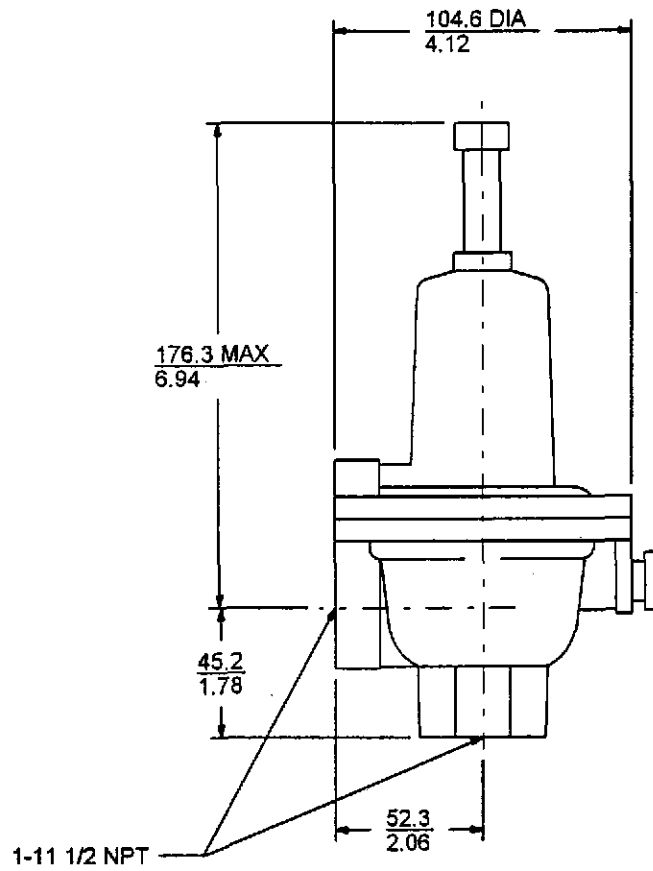
ITEM NO: 004 REV:

R1.2.1-1.2.13-1.131-1126-0



Purpose of drawing is for dimensional reference only.

Total Calculated Assembly Weight: 4 lb



TAGS: PSV425,PSV260,PSV525,PSV360, PSV725,PSV825

Unit of Measure = inches, scale=none. Envelope Dimensions are +/- .25. Face to Face Tolerance per ANSI.
4/24/97 Dimension Certified Correct By Fisher Controls © 1997 Fisher Controls Intl. Inc.

FISHER-ROSEMOUNT

1 IN 289H NPT

CUSTOMER: PROCESS SYSTEMS INTERNATIONAL INC
 CUST REF #: 556879
 TAG NO: SEE ABOVE

AR = Actuator Removal Clearance

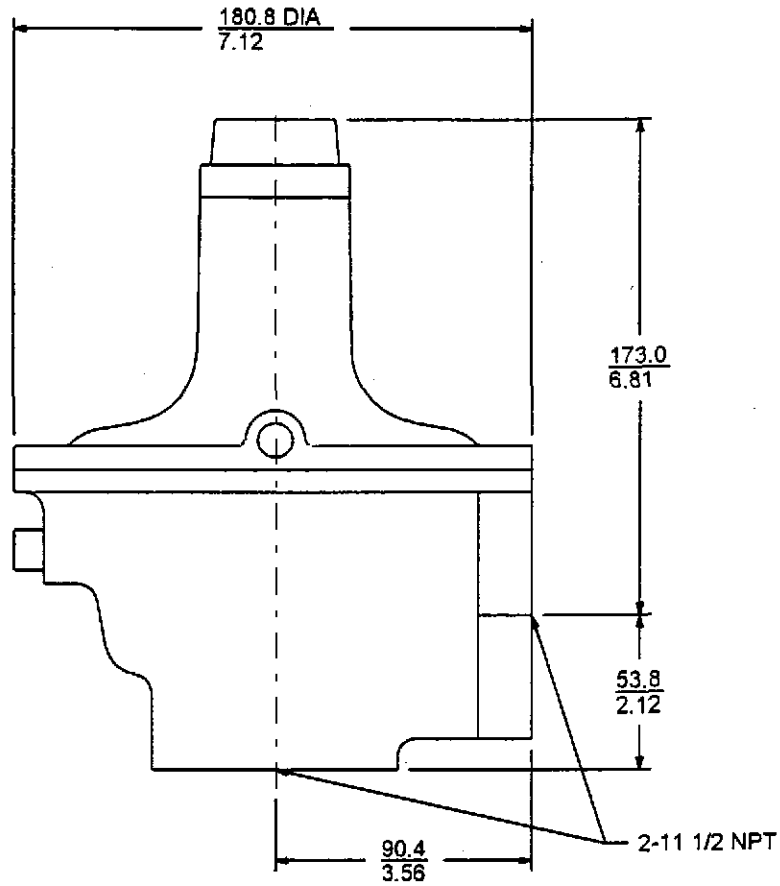
FISHER REF #: 002-A019005741
 ITEM NO: 001 REV:

R1.2.1-1.2.13-1.131-123-0



Purpose of drawing is for dimensional reference only.

Total Calculated Assembly Weight: 4 lb



Unit of Measure = inches, scale=none. Envelope Dimensions are +/- .25. Face to Face Tolerance per ANSI.

4/24/97 Dimension Certified Correct By Fisher Controls

© 1997 Fisher Controls Intl. Inc.

FISHER-ROSEMOUNT

2 IN 289H NPT

CUSTOMER: PROCESS SYSTEMS INTERNATIONAL INC

CUST REF #: 556879

TAG NO: PSV175 PSV675

FISHER REF #: 002-A019005741

AR = Actuator Removal Clearance

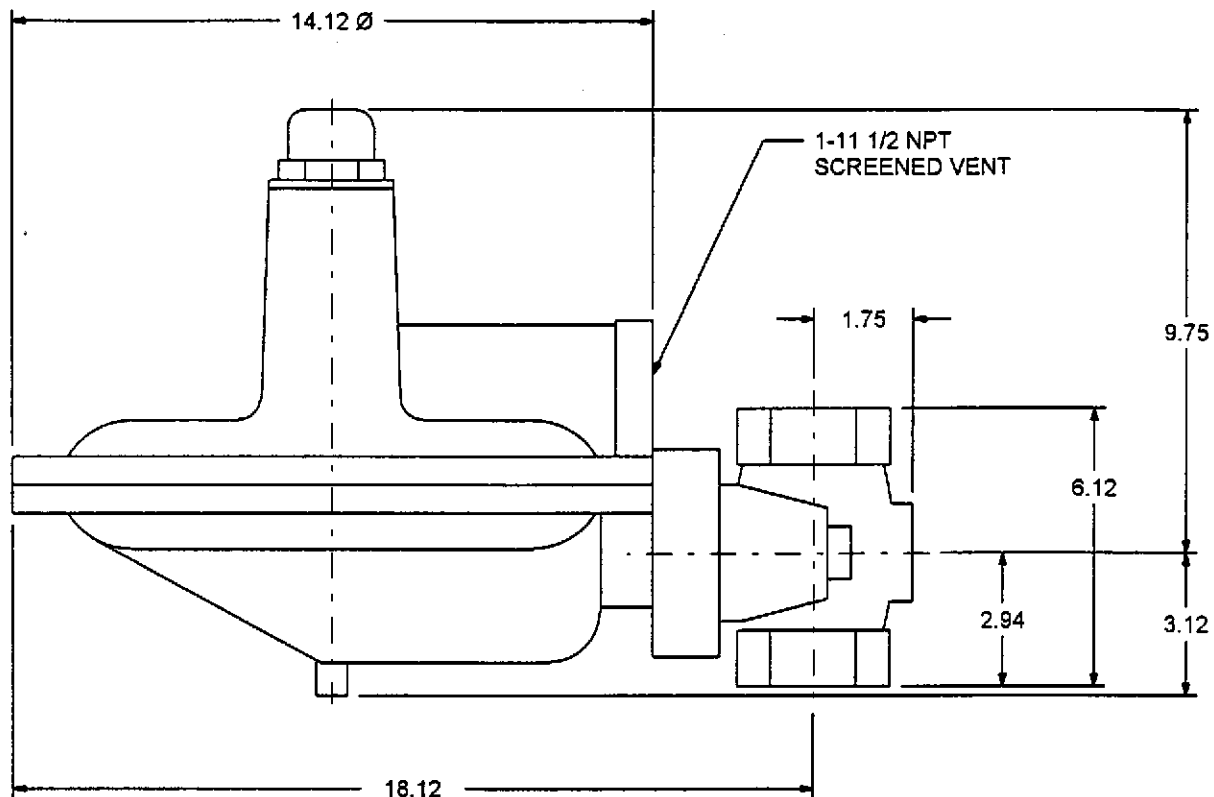
ITEM NO: 002

REV:

R1.2.1-1.2.13-1.131-124-0

Purpose of drawing is for dimensional reference only.

Total Calculated Assembly Weight: 21 lb



TAGS: PCV426,PCV261,PCV526,PCV361,
PCV726,PCV826

Unit of Measure = inches, scale=none. Envelope Dimensions are +/- .25. Face to Face Tolerance per ANSI.

4/24/97 Dimension Certified Correct By Fisher Controls

© 1997 Fisher Controls Int. Inc.

FISHER-ROSEMOUNT

1 1/2 IN S202H 250 NPT

CUSTOMER: PROCESS SYSTEMS INTERNATIONAL INC

CUST REF #: 556879

TAG NO: SEE ABOVE

AR = Actuator Removal Clearance

FISHER REF #: 002-A019005741

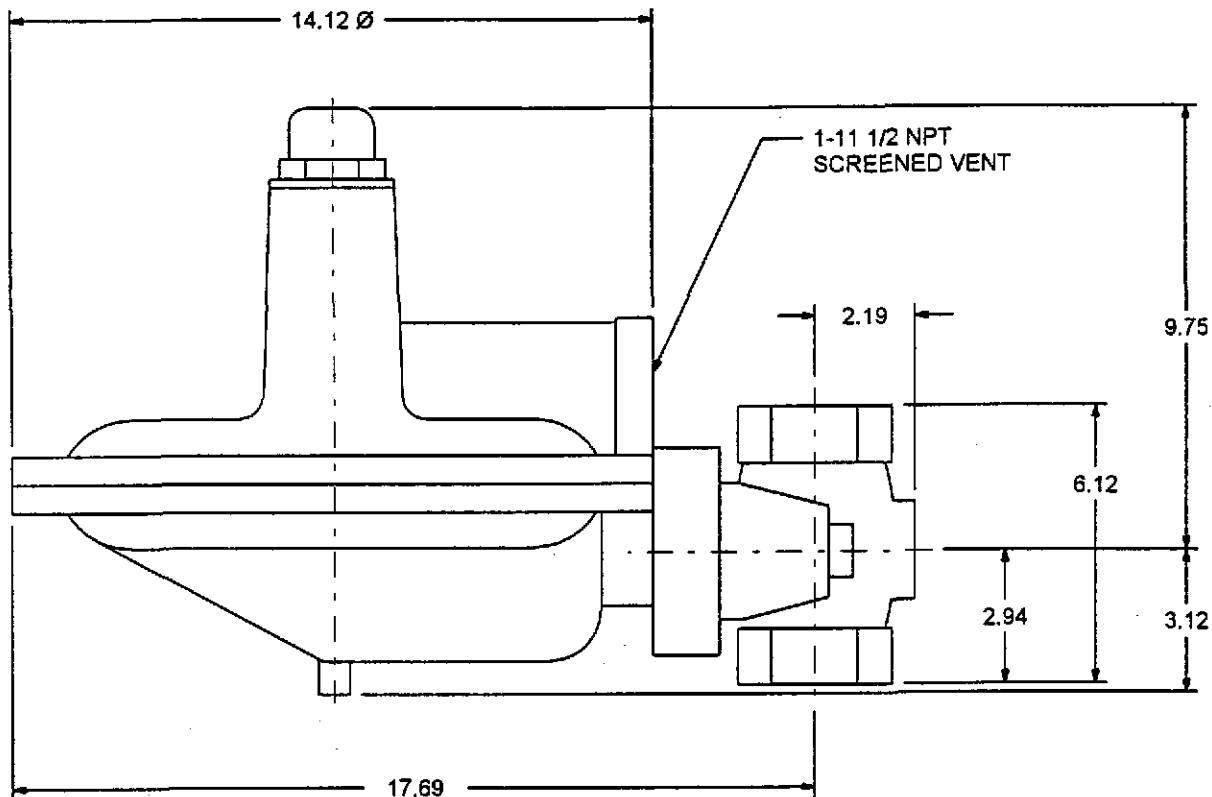
ITEM NO: 003

REV:

R1.2.1-1.2.13-1.131-1122-0

Purpose of drawing is for dimensional reference only.

Total Calculated Assembly Weight: 21 lb



Unit of Measure = inches, scale=none. Envelope Dimensions are +/- .25. Face to Face Tolerance per ANSI.
 4/24/97 Dimension Certified Correct By Fisher Controls © 1997 Fisher Controls Intl. Inc. FISHER-ROSEMOUNT

2 IN S202H 250 NPT

CUSTOMER: PROCESS SYSTEMS INTERNATIONAL INC
 CUST REF #: 556879
 TAG NO: PCV184 PCV684

AR = Actuator Removal Clearance

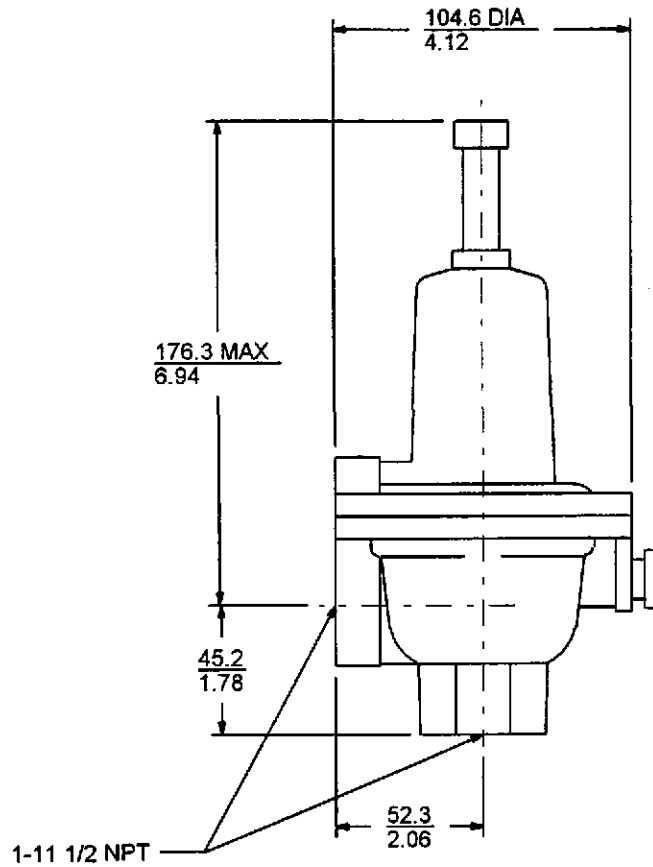
FISHER REF #: 002-A019005741
 ITEM NO: 004 REV:

R1.2.1-1.2.13-1.131-1126-0



Purpose of drawing is for dimensional reference only.

Total Calculated Assembly Weight: 4 lb



TAGS: PSV425,PSV260,PSV525,PSV360, PSV725,PSV825

Unit of Measure = inches, scale=none. Envelope Dimensions are +/- .25. Face to Face Tolerance per ANSI.
4/24/97 Dimension Certified Correct By Fisher Controls © 1997 Fisher Controls Int'l. Inc.

FISHER-ROSEMOUNT

1 IN 289H NPT

CUSTOMER: PROCESS SYSTEMS INTERNATIONAL INC
CUST REF #: 556879
TAG NO: SEE ABOVE

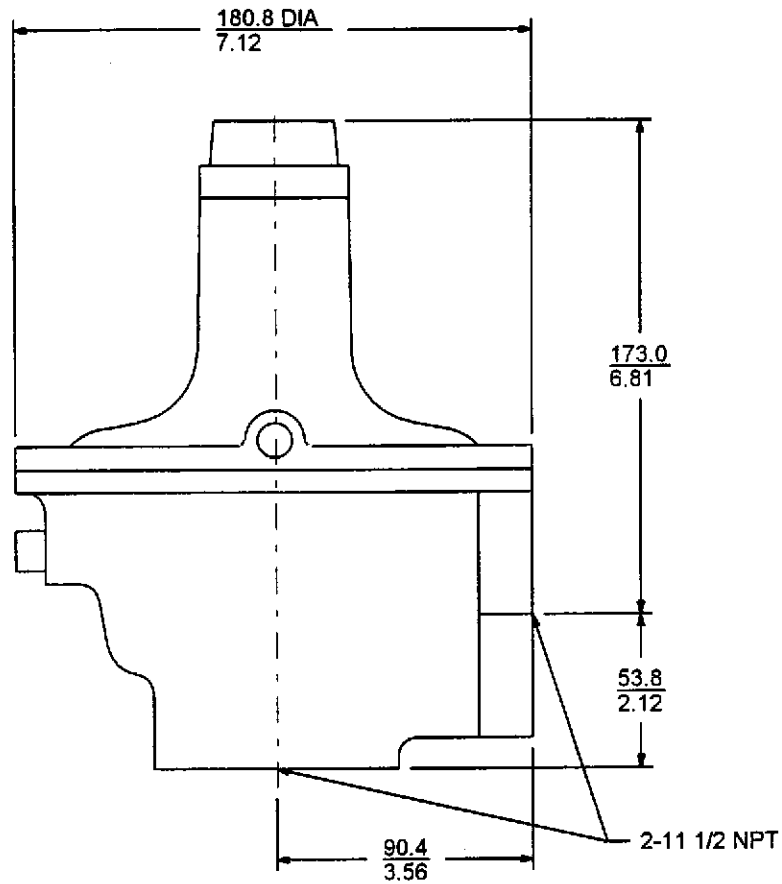
AR = Actuator Removal Clearance

FISHER REF #: 002-A019005741
ITEM NO: 001 REV:

R1.2.1-1.2.13-1.131-123-0

Purpose of drawing is for dimensional reference only.

Total Calculated Assembly Weight: 4 lb



Unit of Measure = inches, scale=none. Envelope Dimensions are +/- .25. Face to Face Tolerance per ANSI.
 4/24/97 Dimension Certified Correct By Fisher Controls © 1997 Fisher Controls Intl. Inc.

FISHER-ROSEMOUNT

2 IN 289H NPT

CUSTOMER: PROCESS SYSTEMS INTERNATIONAL INC
 CUST REF #: 556879
 TAG NO: PSV175 PSV675

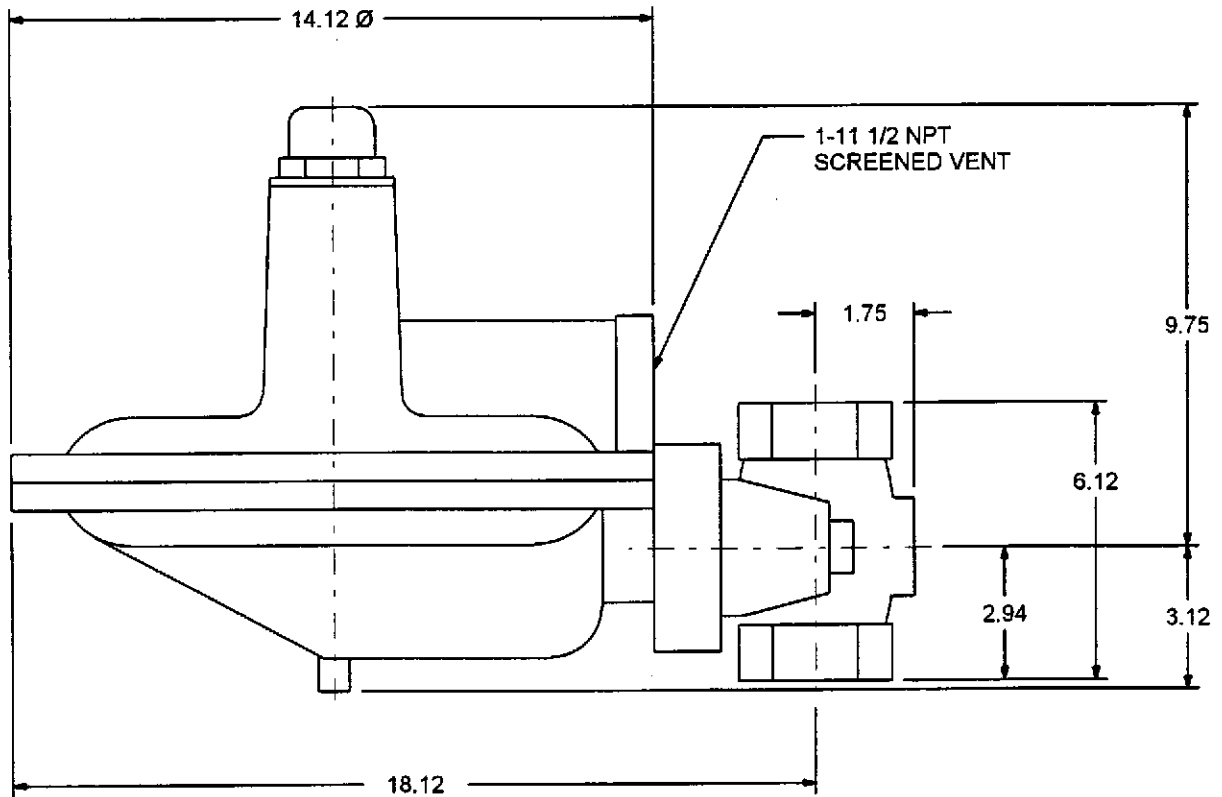
AR = Actuator Removal Clearance

FISHER REF #: 002-A019005741
 ITEM NO: 002 REV:

R1.2.1-1.2.13-1.131-124-0

Purpose of drawing is for dimensional reference only.

Total Calculated Assembly Weight: 21 lb



TAGS: PCV426,PCV261,PCV526,PCV361,
PCV726,PCV826

Unit of Measure = inches, scale=none. Envelope Dimensions are +/- .25. Face to Face Tolerance per ANSI.
4/24/97 Dimension Certified Correct By Fisher Controls

© 1997 Fisher Controls Intl. Inc.

FISHER-ROSEMOUNT

1 1/2 IN S202H 250 NPT

CUSTOMER: PROCESS SYSTEMS INTERNATIONAL INC
CUST REF #: 556879
TAG NO: SEE ABOVE

AR = Actuator Removal Clearance

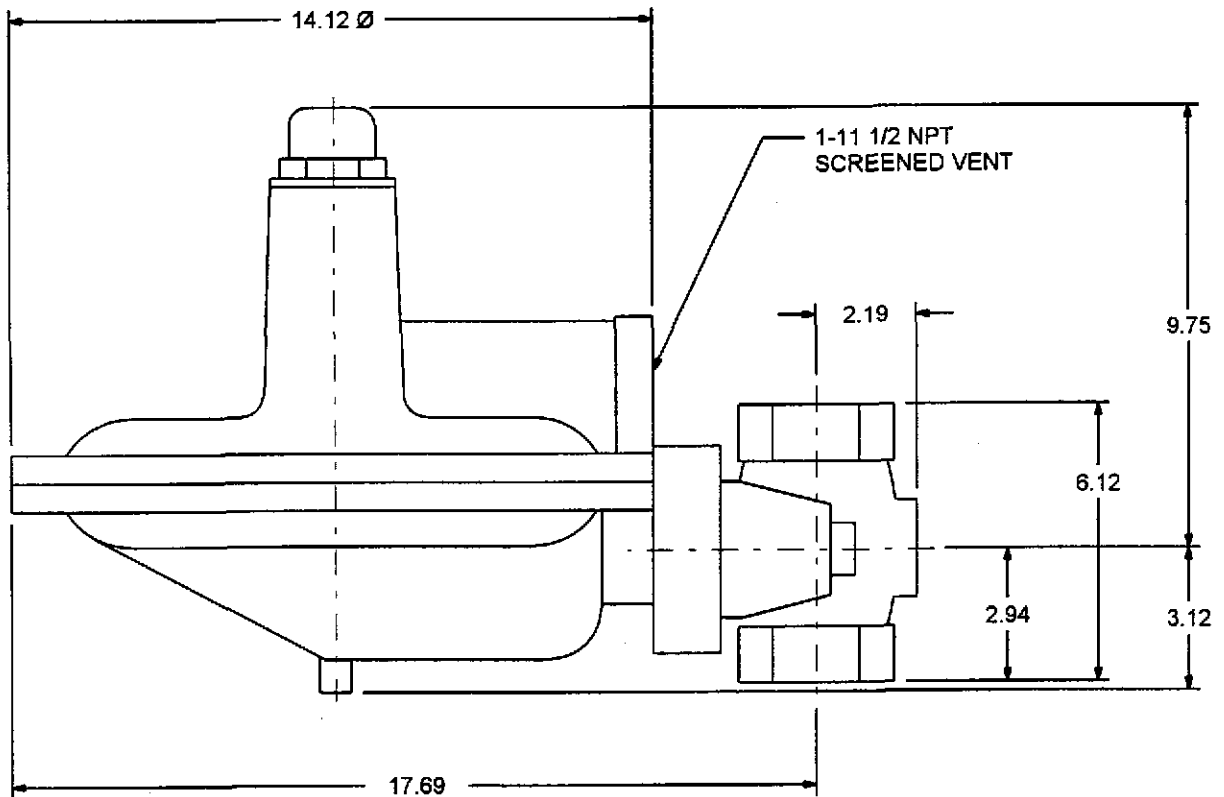
FISHER REF #: 002-A019005741
ITEM NO: 003 REV:

R1.2.1-1.2.13-1.131-1122-0



Purpose of drawing is for dimensional reference only.

Total Calculated Assembly Weight: 21 lb



Unit of Measure = inches, scale=none. Envelope Dimensions are +/- .25. Face to Face Tolerance per ANSI.

4/24/97 Dimension Certified Correct By Fisher Controls

© 1997 Fisher Controls Intl. Inc.

FISHER-ROSEMOUNT

2 IN S202H 250 NPT

CUSTOMER: PROCESS SYSTEMS INTERNATIONAL INC

CUST REF #: 556879

TAG NO: PCV184 PCV684

AR = Actuator Removal Clearance

FISHER REF #: 002-A019005741

ITEM NO: 004

REV:

R1.2.1-1.2.13-1.131-1126-0

FISHER CONTROLS PROCESS PROTECTION

PROCESS SYSTEMS INTERNATIONAL INC
20 WALKUP DRIVE
WESTBORO, MASS

002 -A019005741

01581

UNIT SPARES PARTS LIST

The attached UNIT SPARE PARTS LIST is provided as part of the Fisher Process Protection program, which is designed to help you in process maintenance.

The list gives a convenient tabulation of those parts recommended to be kept on-hand for potential maintenance use. The parts shown are for the specific valve or instrument indicated on the list by tag or serial number

Recommended spare parts are indicated also in the standard instruction manual for the unit. However, the Unit Spare Parts List may recommend additional parts due to a special design feature or nonstandard material being utilized in the original construction of the unit.

For additional information on Fisher replacement parts and pre-packaged parts kits, please contact your Fisher sales representative.

Replacement Parts Management

CUSTOMER ORDER NUMBER	REPRESENTATIVE PO CO	ORDER DATE	SERIAL NUMBER
556879	002 -A019005741	04/03/97	14522513-18

SOLD TO
PROCESS SYSTEMS INTERNATIONAL INC
20 WALKUP DRIVE
WESTBORD, MASS

SHIP TO
PROCESS SYSTEMS INTERNATIONAL
20 WALKUP DRIVE
WESTBOROUGH, MA

01581

01581

ITEM	0001 TAG PSV425, PSV260, PSV525, PSV360, PSV725, PSV825	ITEM-QTY
	TYPE 289H PRESSURE RELIEF VALVE SIZE 1, TYPE	6
	DEGREASING	

COMP	PART NUMBER	PART NAME	MATERIAL	QUANTITY	LIST PR/EA
A		RELIEF VALVE ASSEMBLY			
		FS289H-41/V2			
		289X3-A8-B1-C1			
	R289HX00032	KIT,REPAIR	VITON	1	EA 52.00
		289H & HH 1 INCH	VITON SPARES		
	1E564843122	SCREEN	SST	1	
	1E606602342	DIAPHRAGM	FKM/TPES 17E53	1	
	1F2692X0012	O-RING	VITON-DS52-5	1	
	1F826804022	GASKET,TO 302F/150C	COMP/17A5	1	
	1N430406382	O-RING	VITON-DS52-5	2	
	13A9929X012	GASKET	NEOPRENE,50DURO	1	
	1F826509012	O-RING WASHER	AL A92011T3	1	EA 4.00

CUSTOMER ORDER NUMBER	REPRESENTATIVE PO CO	ORDER DATE	SERIAL NUMBER
556879	002 -A019005741	04/03/97	14522513-18

SOLD TO
PROCESS SYSTEMS INTERNATIONAL INC
20 WALKUP DRIVE
WESTBORO, MASS

SHIP TO
PROCESS SYSTEMS INTERNATIONAL
20 WALKUP DRIVE
WESTBOROUGH, MA

01581

01581

ITEM	0001 TAG PSV425, PSV260, PSV525, PSV360, PSV725, PSV825	ITEM-QTY
	TYPE 289H PRESSURE RELIEF VALVE SIZE 1, TYPE	6
	DEGREASING	

COMP	PART NUMBER	PART NAME	MATERIAL	QUANTITY	LIST PR/EA
A		RELIEF VALVE ASSEMBLY			
		FS289H-41/V2			
		289X3-A8-B1-C1			
	R289HX00032	KIT,REPAIR	VITON	1	EA 52.00
		289H & HH 1 INCH	VITON SPARES		
	1E564843122	SCREEN	SST	1	
	1E606602342	DIAPHRAGM	FKM/TPES 17E53	1	
	1F2692X0012	O-RING	VITON-DS52-5	1	
	1F826804022	GASKET,TO 302F/150C	COMP/17A5	1	
	1N430406382	O-RING	VITON-DS52-5	2	
	13A9929X012	GASKET	NEOPRENE,50DURO	1	
	1F826509012	O-RING WASHER	AL A92011T3	1	EA 4.00

CUSTOMER ORDER NUMBER	REPRESENTATIVE PD CO	ORDER DATE	SERIAL NUMBER
556879	002 -A019005741	04/03/97	14522513-18

SOLD TO
PROCESS SYSTEMS INTERNATIONAL INC
20 WALKUP DRIVE
WESTBORO, MASS

SHIP TO
PROCESS SYSTEMS INTERNATIONAL
20 WALKUP DRIVE
WESTBOROUGH, MA

01581

01581

ITEM	0001 TAG PSV425, PSV260, PSV525, PSV360, PSV725, PSV825	ITEM-QTY
	TYPE 289H PRESSURE RELIEF VALVE SIZE 1, TYPE	6
	DEGREASING	

COMP	PART NUMBER	PART NAME	MATERIAL	QUANTITY	LIST	PR/EA
A		RELIEF VALVE ASSEMBLY				
		FS289H-41/V2				
		289X3-A8-B1-C1				
	R289HX00032	KIT,REPAIR	VITON	1	EA	52.00
		289H & HH 1 INCH	VITON SPARES			
	1E564843122	SCREEN	SST	1		
	1E606602342	DIAPHRAGM	FKM/TPES 17E53	1		
	1F2692X0012	O-RING	VITON-DS52-5	1		
	1F826804022	GASKET,TO 302F/150C	COMP/17A5	1		
	1N430406382	O-RING	VITON-DS52-5	2		
	13A9929X012	GASKET	NEOPRENE,50DURO	1		
	1F826509012	O-RING WASHER	AL A92011T3	1	EA	4.00

CUSTOMER ORDER NUMBER	REPRESENTATIVE PO CO	ORDER DATE	SERIAL NUMBER
556879	002 -A019005741	04/03/97	14522513-18

SOLD TO
PROCESS SYSTEMS INTERNATIONAL INC
20 WALKUP DRIVE
WESTBORO, MASS

SHIP TO
PROCESS SYSTEMS INTERNATIONAL
20 WALKUP DRIVE
WESTBOROUGH, MA

01581

01581

ITEM	0001 TAG PSV425, PSV260, PSV525, PSV360, PSV725, PSV825	ITEM-QTY
	TYPE 289H PRESSURE RELIEF VALVE SIZE 1, TYPE	6
	DEGREASING	

COMP	PART NUMBER	PART NAME	MATERIAL	QUANTITY	LIST PR/EA
A		RELIEF VALVE ASSEMBLY			
	FS289H-41/V2				
	289X3-A8-B1-C1				
	R289HX00032	KIT,REPAIR	VITON	1	EA 52.00
		289H & HH 1 INCH	VITON SPARES		
	1E564843122	SCREEN	SST	1	
	1E606602342	DIAPHRAGM	FKM/TPES 17E53	1	
	1F2692X0012	O-RING	VITON-DS52-5	1	
	1F826804022	GASKET,TO 302F/150C	COMP/17A5	1	
	1N430406382	O-RING	VITON-DS52-5	2	
	13A9929X012	GASKET	NEOPRENE,50DURO	1	
	1F826509012	O-RING WASHER	AL A92011T3	1	EA 4.00

CUSTOMER ORDER NUMBER	REPRESENTATIVE PO CO	ORDER DATE	SERIAL NUMBER
556879	002 -A019005741	04/03/97	14522513-18

SOLD TO
PROCESS SYSTEMS INTERNATIONAL INC
20 WALKUP DRIVE
WESTBORO, MASS

SHIP TO
PROCESS SYSTEMS INTERNATIONAL
20 WALKUP DRIVE
WESTBOROUGH, MA

01581

01581

ITEM	0001 TAG PSV425, PSV260, PSV525, PSV360, PSV725, PSV825	ITEM-QTY
	TYPE 289H PRESSURE RELIEF VALVE SIZE 1, TYPE	6
	DEGREASING	

COMP	PART NUMBER	PART NAME	MATERIAL	QUANTITY	LIST PR/EA
A		RELIEF VALVE ASSEMBLY			
		FS289H-41/V2			
		289X3-A8-B1-C1			
	R289HX00032	KIT,REPAIR	VITON	1	EA 52.00
		289H & HH 1 INCH	VITON SPARES		
	1E564843122	SCREEN	SST	1	
	1E606602342	DIAPHRAGM	FKM/TPES 17E53	1	
	1F2692X0012	O-RING	VITON-DS52-5	1	
	1F826804022	GASKET,TO 302F/150C	COMP/17A5	1	
	1N430406382	O-RING	VITON-DS52-5	2	
	13A9929X012	GASKET	NEOPRENE,50DURO	1	
	1F826509012	O-RING WASHER	AL A92011T3	1	EA 4.00

CUSTOMER ORDER NUMBER	REPRESENTATIVE PO CO	ORDER DATE	SERIAL NUMBER
556879	002 -A019005741	04/03/97	14522519-20

SOLD TO
PROCESS SYSTEMS INTERNATIONAL INC
20 WALKUP DRIVE
WESTBORO, MASS

SHIP TO
PROCESS SYSTEMS INTERNATIONAL
20 WALKUP DRIVE
WESTBOROUGH, MA

01581

01581

ITEM	0002 TAG PSV175, PSV675	ITEM-QTY
	TYPE 289H PRESSURE RELIEF VALVE SIZE 2, TYPE	2
	DEGREASING	

COMP	PART NUMBER	PART NAME	MATERIAL	QUANTITY	LIST PR/EA
A		RELIEF VALVE ASSEMBLY			
		FS289H-2/V2			
		289X3-A9-B3-C7			
	R289HX00042	KIT,REPAIR	VITON	1	EA 86.10
		289H 2 INCH VITON SPARES			
	1D779804022	GASKET,TO 302F/150C	COMP/17A5	3	
	1D780002332	DIAPHRAGM	FKM/TPES 17E53	1	
	1P753306992	GASKET	NEOPRENE	1	
	1V664606382	O-RING	VITON	1	
	11B1993X012	GASKET	NEOPRENE,50DURO	1	
	11B1994X012	SCREEN	SST	1	
	1E702613012	SEAT RING	BRS C37700	1	EA 46.00
	1F826509012	O-RING WASHER	AL A92011T3	1	EA 4.00
	11B1993X012	GASKET	NEOPRENE,50DURO	1	EA 2.00

CUSTOMER ORDER NUMBER	REPRESENTATIVE PO CO	ORDER DATE	SERIAL NUMBER
556879	002 -A019005741	04/03/97	14522519-20

SOLD TO
PROCESS SYSTEMS INTERNATIONAL INC
20 WALKUP DRIVE
WESTBORO, MASS

SHIP TO
PROCESS SYSTEMS INTERNATIONAL
20 WALKUP DRIVE
WESTBOROUGH, MA

01581

01581

ITEM	0002 TAG PSV175, PSV675	ITEM-QTY
	TYPE 289H PRESSURE RELIEF VALVE SIZE 2, TYPE	2
	DEGREASING	

COMP	PART NUMBER	PART NAME	MATERIAL	QUANTITY	LIST PR/EA
A		RELIEF VALVE ASSEMBLY			
		FS289H-2/V2			
		289X3-A9-B3-C7			
	R289HX00042	KIT,REPAIR	VITON	1	EA 86.10
		289H 2 INCH VITON SPARES			
	1D779804022	GASKET,TO 302F/150C	COMP/17A5	3	
	1D780002332	DIAPHRAGM	FKM/TPES 17E53	1	
	1P753306992	GASKET	NEOPRENE	1	
	1V664606382	O-RING	VITON	1	
	11B1993X012	GASKET	NEOPRENE,50DURO	1	
	11B1994X012	SCREEN	SST	1	
	1E702613012	SEAT RING	BRS C37700	1	EA 46.00
	1F826509012	O-RING WASHER	AL A92011T3	1	EA 4.00
	11B1993X012	GASKET	NEOPRENE,50DURO	1	EA 2.00

CUSTOMER ORDER NUMBER	REPRESENTATIVE PO CO	ORDER DATE	SERIAL NUMBER
556879	002 -A019005741	04/03/97	14522519-20

SOLD TO	SHIP TO
PROCESS SYSTEMS INTERNATIONAL INC	PROCESS SYSTEMS INTERNATIONAL
20 WALKUP DRIVE	20 WALKUP DRIVE
WESTBORO, MASS	WESTBOROUGH, MA

01581

01581

ITEM	0002 TAG PSV175, PSV675	ITEM-QTY
	TYPE 289H PRESSURE RELIEF VALVE SIZE 2, TYPE	2
	DEGREASING	

COMP	PART NUMBER	PART NAME	MATERIAL	QUANTITY	LIST PR/EA
A		RELIEF VALVE ASSEMBLY			
		FS289H-2/V2			
		289X3-A9-B3-C7			
	R289HX00042	KIT,REPAIR	VITON	1	EA 86.10
		289H 2 INCH VITON SPARES			
	1D779804022	GASKET,TO 302F/150C	COMP/17A5	3	
	1D780002332	DIAPHRAGM	FKM/TPES 17E53	1	
	1P753306992	GASKET	NEOPRENE	1	
	1V664606382	O-RING	VITON	1	
	11B1993X012	GASKET	NEOPRENE,50DURO	1	
	11B1994X012	SCREEN	SST	1	
	1E702613012	SEAT RING	BRS C37700	1	EA 46.00
	1F826509012	O-RING WASHER	AL A92011T3	1	EA 4.00
	11B1993X012	GASKET	NEOPRENE,50DURO	1	EA 2.00

CUSTOMER ORDER NUMBER 556879
REPRESENTATIVE PO CO 002 -A019005741
ORDER DATE 04/03/97
SERIAL NUMBER 14522519-20

SOLD TO
PROCESS SYSTEMS INTERNATIONAL INC
20 WALKUP DRIVE
WESTBORO, MASS

SHIP TO
PROCESS SYSTEMS INTERNATIONAL
20 WALKUP DRIVE
WESTBOROUGH, MA

01581

01581

ITEM 0002 TAG PSV175, PSV675
TYPE 289H PRESSURE RELIEF VALVE SIZE 2, TYPE
DEGREASING
ITEM-QTY 2

COMP	PART NUMBER	PART NAME	MATERIAL	QUANTITY	LIST	PR/EA
A		RELIEF VALVE ASSEMBLY				
		FS289H-2/V2				
		289X3-A9-B3-C7				
	R289HX00042	KIT,REPAIR	VITON	1	EA	86.10
		289H 2 INCH VITON SPARES				
	1D779804022	GASKET,TO 302F/150C	COMP/17A5	3		
	1D780002332	DIAPHRAGM	FKM/TPES 17E53	1		
	1P753306992	GASKET	NEOPRENE	1		
	1V664606382	O-RING	VITON	1		
	11B1993X012	GASKET	NEOPRENE,50DURO	1		
	11B1994X012	SCREEN	SST	1		
	1E702613012	SEAT RING	BRS C37700	1	EA	46.00
	1F826509012	O-RING WASHER	AL A92011T3	1	EA	4.00
	11B1993X012	GASKET	NEOPRENE,50DURO	1	EA	2.00

CUSTOMER ORDER NUMBER	REPRESENTATIVE PO CO	ORDER DATE	SERIAL NUMBER
556879	002 -A019005741	04/03/97	14522519-20

SOLD TO
PROCESS SYSTEMS INTERNATIONAL INC
20 WALKUP DRIVE
WESTBORO, MASS

SHIP TO
PROCESS SYSTEMS INTERNATIONAL
20 WALKUP DRIVE
WESTBOROUGH, MA

01581

01581

ITEM	0002 TAG PSV175, PSV675	ITEM-QTY
	TYPE 289H PRESSURE RELIEF VALVE SIZE 2, TYPE	2
	DEGREASING	

COMP	PART NUMBER	PART NAME	MATERIAL	QUANTITY	LIST	PR/EA
A		RELIEF VALVE ASSEMBLY				
		FS289H-2/V2				
		289X3-A9-B3-C7				
	R289HX00042	KIT,REPAIR	VITON	1	EA	86.10
		289H 2 INCH VITON SPARES				
	1D779804022	GASKET,TO 302F/150C	COMP/17A5	3		
	1D780002332	DIAPHRAGM	FKM/TPES 17E53	1		
	1P753306992	GASKET	NEOPRENE	1		
	1V664606382	O-RING	VITON	1		
	11B1993X012	GASKET	NEOPRENE,50DURO	1		
	11B1994X012	SCREEN	SST	1		
	1E702613012	SEAT RING	BRS C37700	1	EA	46.00
	1F826509012	O-RING WASHER	AL A92011T3	1	EA	4.00
	11B1993X012	GASKET	NEOPRENE,50DURO	1	EA	2.00

CUSTOMER ORDER NUMBER	REPRESENTATIVE PO CO	ORDER DATE	SERIAL NUMBER
556879	002 -A019005741	04/03/97	14523565-70

SOLD TO
PROCESS SYSTEMS INTERNATIONAL INC
20 WALKUP DRIVE
WESTBORO, MASS

SHIP TO
PROCESS SYSTEMS INTERNATIONAL
20 WALKUP DRIVE
WESTBOROUGH, MA

01581

01581

ITEM	0003 TAG PCV426, PCV261, PCV526, PCV361, PCV726, PCV826	ITEM-QTY
	TYPE S202H REGULATOR SIZE 1 1/2, TYPE	6
	DEGREASING	

COMP	PART NUMBER	PART NAME	MATERIAL	QUANTITY	LIST PR/EA
------	-------------	-----------	----------	----------	------------

A GAS SERVICE REGULATOR
FSS202H-BDH/*V1/*V2/*V3
S200X1-A3-B7-C1-D*-E8-F1-G1-J1-K9-P3-S1-9A1-9B6
-9D10-9E1

T12587T0022	O-RING	VITON-DS52-5	1	EA	37.00
T13609T0012	ORIFICE, FLAPPER	SST	1	EA	4.50
1H9748000A2	STEM ASSY	AL/AL EFLM	1	EA	22.50
1H979209022	ORIFICE	AL A92011T3	1	EA	13.00
1L1545X0022	DIAPHRAGM/HEAD ASSY	STL/17E53	1	EA	305.00
1N4462T0012	GASKET,CLOSING CAP	VITON,FMS 17G40	1	EA	82.00
1P7349X0022	DISC HOLDER ASSY	ALUM/ VITON	1	EA	46.00

CUSTOMER ORDER NUMBER	REPRESENTATIVE PO CO	ORDER DATE	SERIAL NUMBER
556879	002 -A019005741	04/03/97	14523565-70

SOLD TO
PROCESS SYSTEMS INTERNATIONAL INC
20 WALKUP DRIVE
WESTBORO, MASS

SHIP TO
PROCESS SYSTEMS INTERNATIONAL
20 WALKUP DRIVE
WESTBOROUGH, MA

01581

01581

ITEM	0003 TAG PCV426, PCV261, PCV526, PCV361, PCV726, PCV826	ITEM-QTY
	TYPE S202H REGULATOR SIZE 1 1/2, TYPE	6
	DEGREASING	

COMP	PART NUMBER	PART NAME	MATERIAL	QUANTITY	LIST PR/EA
------	-------------	-----------	----------	----------	------------

A GAS SERVICE REGULATOR
FSS202H-BDH/*V1/*V2/*V3
S200X1-A3-B7-C1-D*-E8-F1-G1-J1-K9-P3-S1-9A1-9B6
-9D10-9E1

TI2587T0022	O-RING	VITON-DS52-5	1	EA	37.00
TI3609T0012	ORIFICE, FLAPPER	SST	1	EA	4.50
1H9748000A2	STEM ASSY	AL/AL EFLM	1	EA	22.50
1H979209022	ORIFICE	AL A92011T3	1	EA	13.00
1L1545X0022	DIAPHRAGM/HEAD ASSY	STL/17E53	1	EA	305.00
1N4462T0012	GASKET,CLOSING CAP	VITON,FMS 17G40	1	EA	82.00
1P7349X0022	DISC HOLDER ASSY	ALUM/ VITON	1	EA	46.00

CUSTOMER ORDER NUMBER	REPRESENTATIVE PO CO	ORDER DATE	SERIAL NUMBER
556879	002 -A019005741	04/03/97	14523565-70

SOLD TO	SHIP TO
PROCESS SYSTEMS INTERNATIONAL INC	PROCESS SYSTEMS INTERNATIONAL
20 WALKUP DRIVE	20 WALKUP DRIVE
WESTBORD, MASS	WESTBOROUGH, MA

01581

01581

ITEM	0003 TAG PCV426, PCV261, PCV526, PCV361, PCV726, PCV826	ITEM-QTY
	TYPE S202H REGULATOR SIZE 1 1/2, TYPE	6
	DEGREASING	

COMP	PART NUMBER	PART NAME	MATERIAL	QUANTITY	LIST PR/EA
------	-------------	-----------	----------	----------	------------

A GAS SERVICE REGULATOR
FSS202H-BDH/*V1/*V2/*V3
S200X1-A3-B7-C1-D*-E8-F1-G1-J1-K9-P3-S1-9A1-9B6
-9D10-9E1

T12587T0022	O-RING	VITON-DS52-5	1	EA	37.00
T13609T0012	ORIFICE, FLAPPER	SST	1	EA	4.50
1H9748000A2	STEM ASSY	AL/AL EFLM	1	EA	22.50
1H979209022	ORIFICE	AL A92011T3	1	EA	13.00
1L1545X0022	DIAPHRAGM/HEAD ASSY	STL/17E53	1	EA	305.00
1N4462T0012	GASKET,CLOSING CAP	VITON,FMS 17G40	1	EA	82.00
1P7349X0022	DISC HOLDER ASSY	ALUM/ VITON	1	EA	46.00

CUSTOMER ORDER NUMBER	REPRESENTATIVE PO CO	ORDER DATE	SERIAL NUMBER
556879	002 -A019005741	04/03/97	14523565-70

SOLD TO
PROCESS SYSTEMS INTERNATIONAL INC
20 WALKUP DRIVE
WESTBORO, MASS

SHIP TO
PROCESS SYSTEMS INTERNATIONAL
20 WALKUP DRIVE
WESTBOROUGH, MA

01581

01581

ITEM	0003 TAG PCV426, PCV261, PCV526, PCV361, PCV726, PCV826	ITEM-QTY
	TYPE S202H REGULATOR SIZE 1 1/2, TYPE	6
	DEGREASING	

COMP	PART NUMBER	PART NAME	MATERIAL	QUANTITY	LIST PR/EA
------	-------------	-----------	----------	----------	------------

A GAS SERVICE REGULATOR
FSS202H-BDH/*V1/*V2/*V3
S200X1-A3-B7-C1-D*-E8-F1-G1-J1-K9-P3-S1-9A1-9B6
-9D10-9E1

T12587T0022	O-RING	VITON-DS52-5	1	EA	37.00
T13609T0012	ORIFICE, FLAPPER	SST	1	EA	4.50
1H9748000A2	STEM ASSY	AL/AL EFLM	1	EA	22.50
1H979209022	ORIFICE	AL A92011T3	1	EA	13.00
1L1545X0022	DIAPHRAGM/HEAD ASSY	STL/17E53	1	EA	305.00
1N4462T0012	GASKET,CLOSING CAP	VITON,FMS 17G40	1	EA	82.00
1P7349X0022	DISC HOLDER ASSY	ALUM/ VITON	1	EA	46.00

CUSTOMER ORDER NUMBER	REPRESENTATIVE PO CO	ORDER DATE	SERIAL NUMBER
556879	002 -A019005741	04/03/97	14523565-70

SOLD TO
PROCESS SYSTEMS INTERNATIONAL INC
20 WALKUP DRIVE
WESTBORO, MASS

SHIP TO
PROCESS SYSTEMS INTERNATIONAL
20 WALKUP DRIVE
WESTBOROUGH, MA

01581

01581

ITEM	0003 TAG PCV426, PCV261, PCV526, PCV361, PCV726, PCV826	ITEM-QTY
	TYPE S202H REGULATOR SIZE 1 1/2, TYPE	6
	DEGREASING	

COMP	PART NUMBER	PART NAME	MATERIAL	QUANTITY	LIST PR/EA
------	-------------	-----------	----------	----------	------------

A GAS SERVICE REGULATOR
FSS202H-BDH/*V1/*V2/*V3
S200X1-A3-B7-C1-D*-E8-F1-G1-J1-K9-P3-S1-9A1-9B6
-9D10-9E1

T12587T0022	O-RING	VITON-DS52-5	1	EA	37.00
T13609T0012	ORIFICE, FLAPPER	SST	1	EA	4.50
1H9748000A2	STEM ASSY	AL/AL EFLM	1	EA	22.50
1H979209022	ORIFICE	AL A92011T3	1	EA	13.00
1L1545X0022	DIAPHRAGM/HEAD ASSY	STL/17E53	1	EA	305.00
1N4462T0012	GASKET,CLOSING CAP	VITON,FMS 17G40	1	EA	82.00
1P7349X0022	DISC HOLDER ASSY	ALUM/ VITON	1	EA	46.00

CUSTOMER ORDER NUMBER	REPRESENTATIVE PO CO	ORDER DATE	SERIAL NUMBER
556879	002 -A019005741	04/03/97	14523571-72

SOLD TO	SHIP TO
PROCESS SYSTEMS INTERNATIONAL INC	PROCESS SYSTEMS INTERNATIONAL
20 WALKUP DRIVE	20 WALKUP DRIVE
WESTBORO, MASS	WESTBOROUGH, MA

01581

01581

ITEM	0004 TAG PCV184, PCV684	ITEM-QTY
	TYPE S202H REGULATOR SIZE 2, TYPE DEGREASING	2

COMP	PART NUMBER	PART NAME	MATERIAL	QUANTITY	LIST PR/EA
------	-------------	-----------	----------	----------	------------

A GAS SERVICE REGULATOR
FSS202H-CFH/*V1/*V2/*V3
S200X1-A3-B7-C7-D*-E8-F1-G4-J1-K9-P3-S1-9A1-9B6
-9D10-9E1

T12587T0022	O-RING	VITON-DS52-5	1	EA	37.00
T13609T0012	ORIFICE, FLAPPER	SST	1	EA	4.50
1H9748000A2	STEM ASSY	AL/AL EFLM	1	EA	22.50
1H979309022	ORIFICE	AL A92011T3	1	EA	13.00
1L1545X0022	DIAPHRAGM/HEAD ASSY	STL/17E53	1	EA	305.00
1N4462T0012	GASKET,CLOSING CAP	VITON,FMS 17G40	1	EA	82.00
1P7349X0022	DISC HOLDER ASSY	ALUM/ VITON	1	EA	46.00

CUSTOMER ORDER NUMBER	REPRESENTATIVE PO CO	ORDER DATE	SERIAL NUMBER
556879	002 -A019005741	04/03/97	14523571-72

SOLD TO	SHIP TO
PROCESS SYSTEMS INTERNATIONAL INC	PROCESS SYSTEMS INTERNATIONAL
20 WALKUP DRIVE	20 WALKUP DRIVE
WESTBORO, MASS	WESTBOROUGH, MA

01581

01581

ITEM	0004 TAG PCV184, PCV684	ITEM-QTY
	TYPE S202H REGULATOR SIZE 2, TYPE DEGREASING	2

COMP	PART NUMBER	PART NAME	MATERIAL	QUANTITY	LIST PR/EA
A	GAS SERVICE REGULATOR				
	FSS202H-CFH/*V1/*V2/*V3				
	S200X1-A3-B7-C7-D*-E8-F1-G4-J1-K9-P3-S1-9A1-9B6				
	-9D10-9E1				
	T12587T0022	O-RING	VITON-DS52-5	1	EA 37.00
	T13609T0012	ORIFICE, FLAPPER	SST	1	EA 4.50
	1H9748000A2	STEM ASSY	AL/AL EFLM	1	EA 22.50
	1H979309022	ORIFICE	AL A92011T3	1	EA 13.00
	1L1545X0022	DIAPHRAGM/HEAD ASSY	STL/17E53	1	EA 305.00
	1N4462T0012	GASKET,CLOSING CAP	VITON,FMS 17G40	1	EA 82.00
	1P7349X0022	DISC HOLDER ASSY	ALUM/ VITON	1	EA 46.00

CUSTOMER ORDER NUMBER	REPRESENTATIVE PO CO	ORDER DATE	SERIAL NUMBER
556879	002 -A019005741	04/03/97	14523571-72

SOLD TO
PROCESS SYSTEMS INTERNATIONAL INC
20 WALKUP DRIVE
WESTBORO, MASS

SHIP TO
PROCESS SYSTEMS INTERNATIONAL
20 WALKUP DRIVE
WESTBOROUGH, MA

01581

01581

ITEM	0004 TAG PCV184, PCV684	ITEM-QTY
	TYPE S202H REGULATOR SIZE 2, TYPE DEGREASING	2

COMP	PART NUMBER	PART NAME	MATERIAL	QUANTITY	LIST	PR/EA
A	GAS SERVICE REGULATOR					
	FSS202H-CFH/*V1/*V2/*V3					
	S200X1-A3-B7-C7-D*-E8-F1-G4-J1-K9-P3-S1-9A1-9B6					
	-9D10-9E1					
	T12587T0022	O-RING	VITON-DS52-5	1	EA	37.00
	T13609T0012	ORIFICE, FLAPPER	SST	1	EA	4.50
	1H9748000A2	STEM ASSY	AL/AL EFLM	1	EA	22.50
	1H979309022	ORIFICE	AL A92011T3	1	EA	13.00
	1L1545X0022	DIAPHRAGM/HEAD ASSY	STL/17E53	1	EA	305.00
	1N4462T0012	GASKET,CLOSING CAP	VITON,FMS 17G40	1	EA	82.00
	1P7349X0022	DISC HOLDER ASSY	ALUM/ VITON	1	EA	46.00

CUSTOMER ORDER NUMBER	REPRESENTATIVE PO CO	ORDER DATE	SERIAL NUMBER
556879	002 -A019005741	04/03/97	14523571-72

SOLD TO	SHIP TO
PROCESS SYSTEMS INTERNATIONAL INC	PROCESS SYSTEMS INTERNATIONAL
20 WALKUP DRIVE	20 WALKUP DRIVE
WESTBORO, MASS	WESTBOROUGH, MA

01581

01581

ITEM	0004 TAG PCV184, PCV684	ITEM-QTY
	TYPE S202H REGULATOR SIZE 2, TYPE DEGREASING	2

COMP	PART NUMBER	PART NAME	MATERIAL	QUANTITY	LIST PR/EA
A	GAS SERVICE REGULATOR				
	FSS202H-CFH/*V1/*V2/*V3				
	S200X1-A3-B7-C7-D*-E8-F1-G4-J1-K9-P3-S1-9A1-9B6				
	-9D10-9E1				
	T12587T0022	O-RING	VITON-DS52-5	1	EA 37.00
	T13609T0012	ORIFICE, FLAPPER	SST	1	EA 4.50
	1H9748000A2	STEM ASSY	AL/AL EFLM	1	EA 22.50
	1H979309022	ORIFICE	AL A92011T3	1	EA 13.00
	1L1545X0022	DIAPHRAGM/HEAD ASSY	STL/17E53	1	EA 305.00
	1N4462T0012	GASKET,CLOSING CAP	VITON,FMS 17G40	1	EA 82.00
	1P7349X0022	DISC HOLDER ASSY	ALUM/ VITON	1	EA 46.00

CUSTOMER ORDER NUMBER	REPRESENTATIVE PO CO	ORDER DATE	SERIAL NUMBER
556879	002 -A019005741	04/03/97	14523571-72

SOLD TO
PROCESS SYSTEMS INTERNATIONAL INC
20 WALKUP DRIVE
WESTBORO, MASS

SHIP TO
PROCESS SYSTEMS INTERNATIONAL
20 WALKUP DRIVE
WESTBOROUGH, MA

01581

01581

ITEM	0004 TAG PCV184, PCV684	ITEM-QTY
	TYPE S202H REGULATOR SIZE 2, TYPE DEGREASING	2

COMP	PART NUMBER	PART NAME	MATERIAL	QUANTITY	LIST PR/EA
------	-------------	-----------	----------	----------	------------

A GAS SERVICE REGULATOR
FSS202H-CFH/*V1/*V2/*V3
S200X1-A3-B7-C7-D*-E8-F1-G4-J1-K9-P3-S1-9A1-9B6
-9D10-9E1

T12587T0022	O-RING	VITON-DS52-5	1	EA	37.00
T13609T0012	ORIFICE, FLAPPER	SST	1	EA	4.50
1H9748000A2	STEM ASSY	AL/AL EFLM	1	EA	22.50
1H979309022	ORIFICE	AL A92011T3	1	EA	13.00
1L1545X0022	DIAPHRAGM/HEAD ASSY	STL/17E53	1	EA	305.00
1N4462T0012	GASKET,CLOSING CAP	VITON,FMS 17G40	1	EA	82.00
1P7349X0022	DISC HOLDER ASSY	ALUM/ VITON	1	EA	46.00