



DOCUMENT CHANGE NOTICE (DCN)

DOCUMENT No. (DOC-REV-GP. ID)	TITLE	NEW REV.
D961434-A-D	Large Core Optic Component Carrier Standoff Assembly	B
D961435-A-D	Beam Splitter Optic Carrier Standoff Assembly	B
D961444-A-D	Large Core Optic Component Carrier Hinged Standoff Assembly	B
D961445-A-D	Beam Splitter Optic Carrier Hinged Standoff Assembly	B
D961454-A-D	Large Core Optic Component Carrier Indexed Standoff Assembly	B

(Document list, continued)

D961455-A-D	Beam Splitter Optic Carrier Indexed Standoff Assembly	B
-------------	---	---

CHANGE DESCRIPTION (FROM/TO):

D961434, D961435, D961454, D961455:

In parts list, changed item 3 description from:

McMaster-Carr #92765A999 1/4-20 x .75 lg oval point soc set scr

to:

McMaster-Carr #92765A999 1/4-20 x .625 lg oval point soc set scr

REASON FOR CHANGE: Noted.

ACTION: Incorporate change Attach DCN to drawing(s) Other action (specify):

DISPOSITION OF HARDWARE (IDENTIFY SERIAL NUMBERS)

- No hardware affected (record change only)
- List S/Ns which comply already:
- List S/Ns to be reworked or scrapped:
- List S/Ns to be built with this change: all
- List S/Ns to be retested per this change:
-
-
-

DCN DISTRIBUTION (X=incl. docs)

Althouse	Barish	Coles
X Coyne	Lazzarini	Lindquist
 	Sanders	Shoemaker
Stapfer	Tyler	Vogt
Weiss	Whitcomb	
Billingsley	Camp	
x Conley	x Elieson	
Fischer		

SAFETY, COST, SCHEDULE, REQUIREMENTS IMPACT? No Yes (if yes, enter Change Request number)

APPROVALS:	DATE	OTHER APPROVALS (specify)	DATE
ORIGINATOR: C. Conley	5-7-97		
TASK LEADER:			
GROUP LEADER: <i>Dennis Coyne</i>	5/14/97		
DCC RELEASE: <i>[Signature]</i>	5/14/97		



DOCUMENT CHANGE NOTICE

CHANGE DESCRIPTION (FROM/TO):

D961444, D961445:

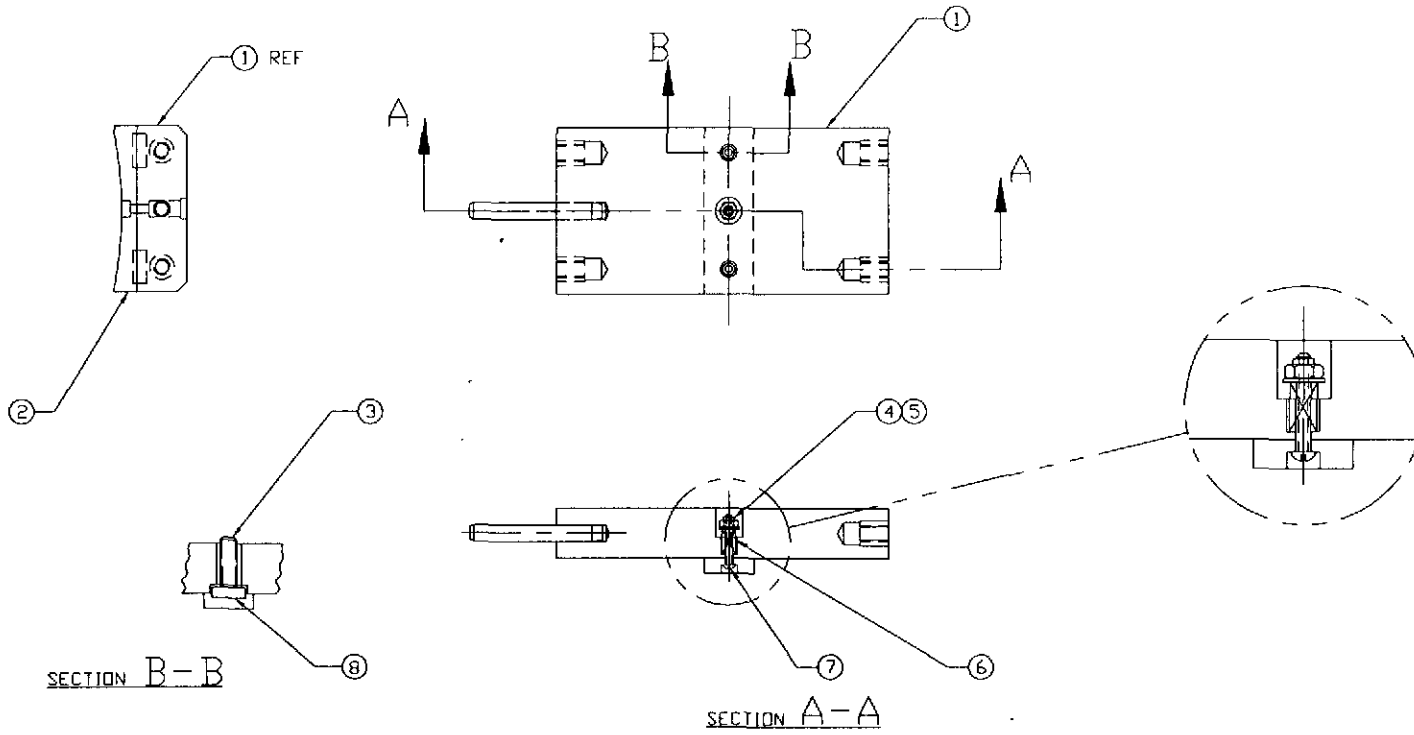
In parts list, changed item 10 description from:

McMaster-Carr #92765A999 1/4-20 x .75 lg oval point soc set scr

to:

McMaster-Carr #92765A999 1/4-20 x .625 lg oval point soc set scr

FOR VENDOR INFORMATION, SEE TOP ASSEMBLY MATERIALS LIST D970006 OR D970007



ELECTRONIC COPY

REF	QTY	PART or DRWG No.	NOMENCLATURE or DESCRIPTION	MATERIAL
8	2	D961426	PRESSURE DISC	-
7	1	McM-Carr #91810A113	#4-40 X .75 LG SLOTTED RD HD SCR	STAINLESS STEEL
6	1	McM-Carr #9435K36	.240 OD, .022 WIRE, .56 F.L. COMP. SPRING	STAINLESS STEEL
5	1	McM-Carr #92141A005	#4 NOM, .13 ID, .31 OD, .032 THK FL WASH	STAINLESS STEEL
4	1	McM-Carr #91839A005	#4-40 HEX NUT, "FLEXLOC"	STAINLESS STEEL
3	2	McM-Carr #92765A999	1/4-20 X .625 LG DVAL POINT SOC SET SCR	STAINLESS STEEL
2	1	D961423	SIDE PAD	-
1	1	D961432	STANDOFF	-

REF		QTY	PART or DRWG No.	NOMENCLATURE or DESCRIPTION	MATERIAL
PARTS and MATERIAL LIST Δ					
9	ICN No.	E970066		CDYNE	CDALCY 5-7-97
A	ICN No.	E960157		CDYNE	KAB01 2-14-97
D	RELEASE FOR FAB				
DA	PRELIMINARY RELEASE				
DD	PRE-RELEASE				
REV	DESCRIPTION	DEC	SYE	DCT	CDS
	ISSUE DESCRIPTION	VE	CC	BT	CHECK
		DRWN	DATE		

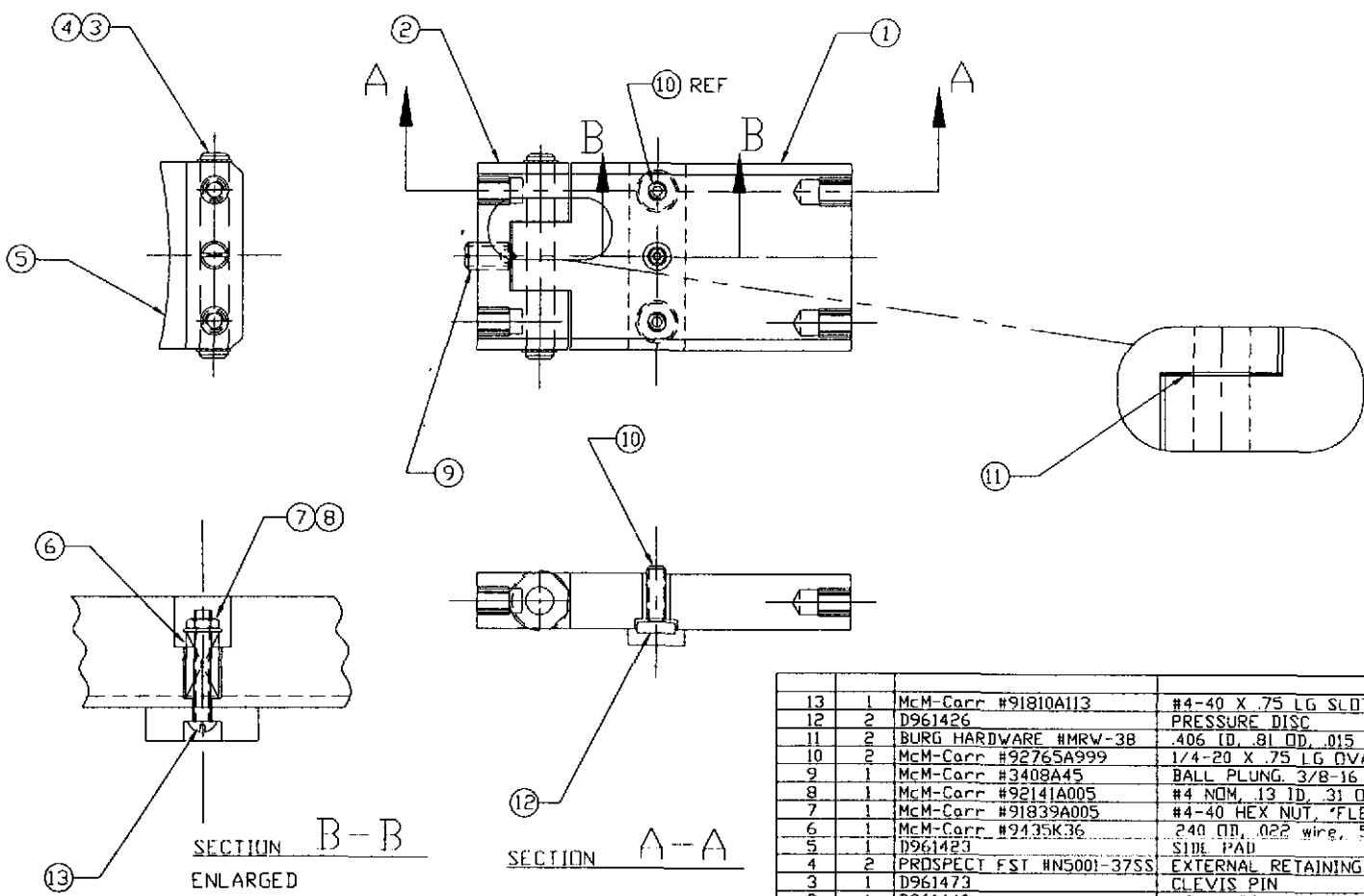
TOLERANCES UNLESS OTHERWISE SPECIFIED DIMENSIONS ARE IN INCHES	
TOLERANCES FRACTIONAL 1 ANGULAR 1/2 BEND 1 TWO PLACE DECIMAL 1	THREE PLACE DECIMAL 1 FINISHED SURFACE RING BREAK CORNERS TO DIM. REMOVE ALL BURRS
MATERIAL:	HEAT TREAT:
FINISH:	
USED ON:	NEXT ASSY: D961460

LIGO CALIFORNIA INSTITUTE OF TECHNOLOGY PASADENA/CALIFORNIA

LARGE CORE OPTIC COMPONENT CARRIER STANDOFF ASSEMBLY

DRG NO: D961434-B-D SHEET 1 OF 1

NOTES: (UNLESS OTHERWISE SPECIFIED)
 Δ FOR VENDOR INFORMATION, SEE TOP ASSEMBLY MATERIALS LIST D970006 OR D970007

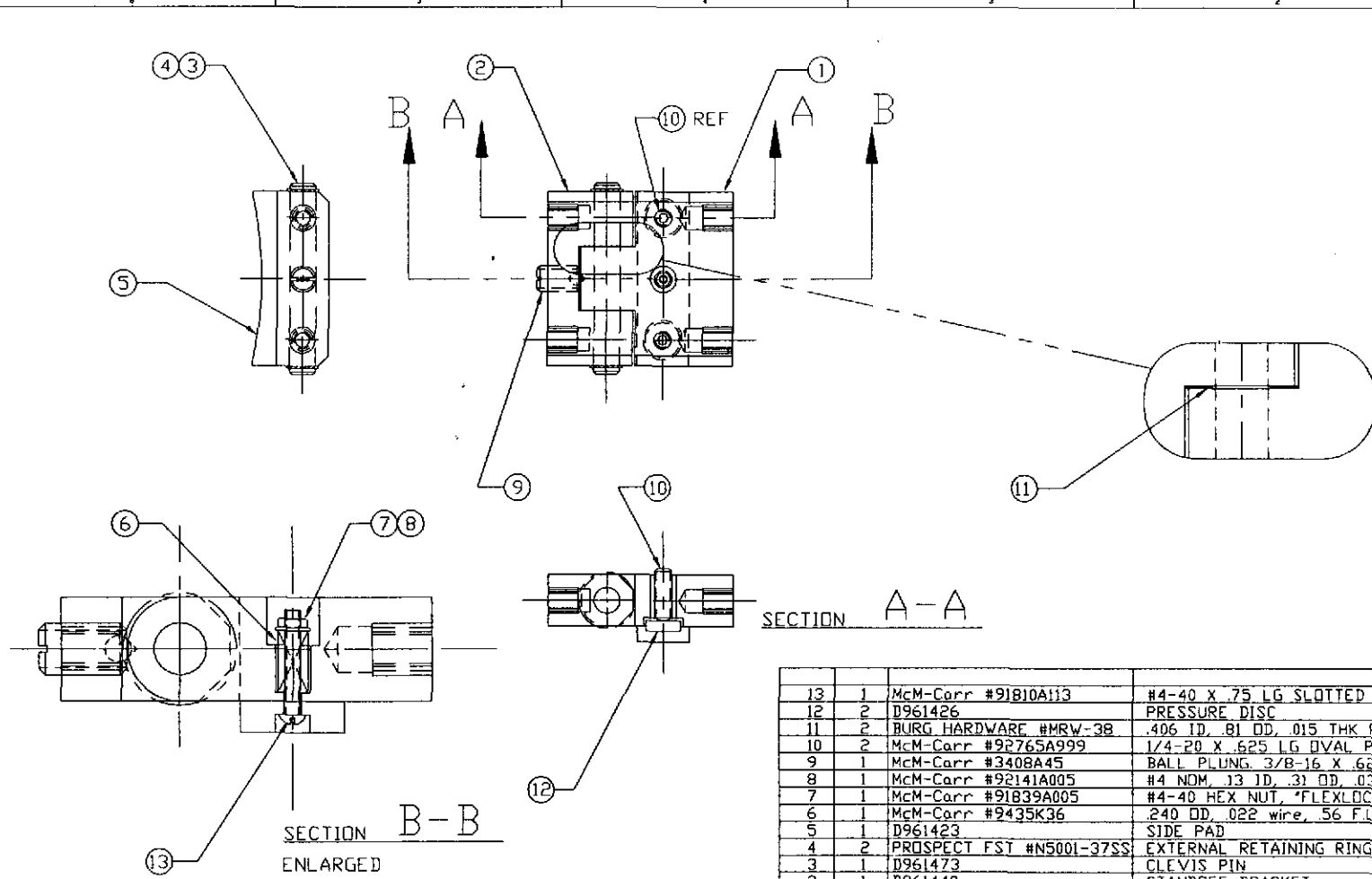


ELECTRONIC COPY

REF	QTY	PART or DRWG No.	NOMENCLATURE or DESCRIPTION	MATERIAL
13	1	McM-Carr #91810A113	#4-40 X .75 LG SLOTTED RD HD SCR	stainless steel
12	2	D961426	PRESSURE DISC	-
11	2	BURG HARDWARE #MRW-3B	.406 ID, .81 OD, .015 THK FLAT WASH	MYLAR
10	2	McM-Carr #92765A999	1/4-20 X .75 LG OVAL POINT SOC SET SCR	stainless steel
9	1	McM-Carr #3408A45	BALL PLUNG, 3/8-16 X .62LG .19 BALL 5-10H	stainless steel
8	1	McM-Carr #92141A005	#4 NOM, .13 ID, .31 OD, .032 THK FL WASH	stainless steel
7	1	McM-Carr #91839A005	#4-40 HEX NUT, 'FLEXLOC'	stainless steel
6	1	McM-Carr #9435K36	.240 OD, .022 wire, 56 F.L. comp. spring	stainless steel
5	1	D961423	SIDE PAD	-
4	2	PROSPECT FST #N5001-37SS	EXTERNAL RETAINING RING, 3/8 SHAFT	stainless steel
3	1	D961473	CLEVIS PIN	-
2	1	D961440	STANDOFF BRACKET	-
1	1	D961442	HINGED STANDOFF	-

TOLERANCES		UNLESS OTHERWISE SPECIFIED			PARTS and MATERIAL LIST AS															
FRACTIONAL		DIMENSIONS ARE IN INCHES			REV	DESCRIPTION	REV	DESCRIPTION	REV	DESCRIPTION	REV	DESCRIPTION	REV	DESCRIPTION	REV	DESCRIPTION	REV	DESCRIPTION		
FRACTIONAL		THREE PLACE DECIMAL			A		DCN IN DRAWING		01		RELEASED FOR FAB		02		PRELIMINARY RELEASE		03		PRE-RELEASE	
ANGULAR		THREE PLACE DECIMAL			MATERIAL		NEXT TREAT		FINISH		HARDT		12-16-56		DATE		D961444-A-dwg		D961444-A-D	
BEND		THREE PLACE DECIMAL			USED ON		NEXT ASSY: D961440		SCALE		MTC		SHEET		1 OF 1					

NOTES: (UNLESS OTHERWISE SPECIFIED)
 Δ FOR VENDOR INFORMATION, SEE TOP ASSEMBLY MATERIALS LIST D97006 OR D97007



ELECTRONIC COPY

REF	QTY	PART or DRWG No.	NOMENCLATURE or DESCRIPTION	MATERIAL
13	1	McM-Corr #91810A113	#4-40 X .75 LG SLOTTED RD HD SCR	stainless steel
12	2	D961426	PRESSURE DISC	-
11	2	BURG HARDWARE #MRW-38	.406 ID, .81 OD, .015 THK FLAT WASH	MYLAR
10	2	McM-Corr #92765A999	1/4-20 X .625 LG OVAL POINT SOC SET SCR	stainless steel
9	1	McM-Corr #3408A45	BALL PLUNG 3/8-16 X .62 LG .19 BALL 5-10#	stainless steel
8	1	McM-Corr #92141A005	#4 NDM, .13 ID, .31 OD, .032 THK FL WASH	stainless steel
7	1	McM-Corr #91839A005	#4-40 HEX NUT, 'FLEXLOC'	stainless steel
6	1	McM-Corr #9435K36	.240 OD, .022 wire, .56 F.L. comp. spring	stainless steel
5	1	D961423	SIDE PAD	-
4	2	PROSPECT FST #N5001-37SS	EXTERNAL RETAINING RING, 3/8 SHAFT	stainless steel
3	1	D961473	CLEVIS PIN	-
2	1	D961440	STANDOFF BRACKET	-
1	1	D961443	HINGED STANDOFF	-

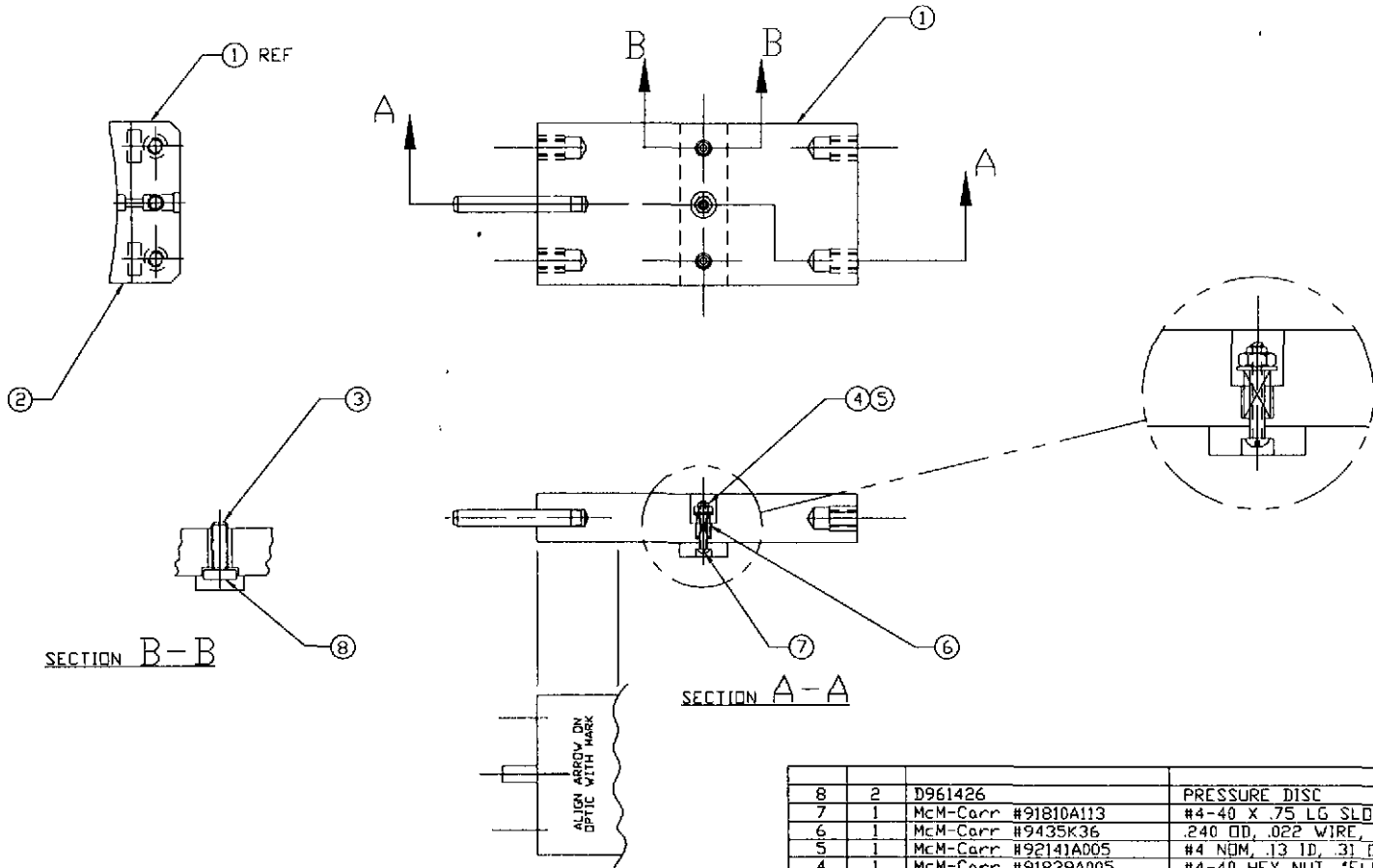
DRAWING INFORMATION		MATERIALS			PARTS and MATERIAL LIST Δ										LGS		
DRWG NO	DESCRIPTION	MATERIAL	HEAT TREAT	FINISH	B	DRW	CHK	APP	DATE	ISSUE	DATE	BY	DATE	BY	DATE	BY	DATE

LGS CALIFORNIA INSTITUTE OF TECHNOLOGY MASSACHUSETTS INSTITUTE OF TECHNOLOGY

BEAM SPLITTER OPTIC CARRIER HINGED STANDOFF ASSEMBLY

ISSUE NO. B D961445-B-0 SHEET 1 OF 1

NOTES (UNLESS OTHERWISE SPECIFIED)
 Δ FOR VENDOR INFORMATION, SEE TOP ASSEMBLY MATERIALS LIST D970006 OR D970007.



ELECTRONIC COPY

REF	QTY	PART or DRWG No.	NOMENCLATURE or DESCRIPTION	MATERIAL
8	2	D961426	PRESSURE DISC	-
7	1	McM-Carr #91810A113	#4-40 X .75 LG SLOTTED RD HD SCR	STAINLESS STEEL
6	1	McM-Carr #9435K36	.240 OD, .022 WIRE, .56 F.L. COMP. SPRING	STAINLESS STEEL
5	1	McM-Carr #92141A005	#4 NDM, .13 ID, .31 OD, .032 THK FL WASH	STAINLESS STEEL
4	1	McM-Carr #91839A005	#4-40 HEX NUT, "FLEXLOC"	STAINLESS STEEL
3	2	McM-Carr #92765A999	1/4-20 X .625 LG OVAL POINT SDC SET SCR	STAINLESS STEEL
2	1	D961423	SIDE PAD	-
1	1	D961452	INDEXED STANDOFF	-

REV	DESCRIPTION	ISSUE DESCRIPTION	DATE	BY	CHKD	APP'D	DATE	BY	CHKD	APP'D	DATE	BY	CHKD	APP'D
8	DCN No. E97098				EDMC	EDMC	5-7-97							
7	DCN No. E264187				EDMC	KABZT	2-14-97							
6	RELEASE FOR FAB													
5	PRELIMINARY RELEASE													
4	PRE-RELEASE													

UNLESS OTHERWISE SPECIFIED
 DIMENSIONS ARE IN INCHES

TOLERANCES:
 FRACTIONAL:
 ANGULAR:
 ANGULAR BEND:
 TWO PLACE DECIMAL:
 FINISHED SURFACE RING
 BREAK CORNERS IN
 RELIEVE ALL SHARP

MATERIAL:
 HEAT TREAT:
 FINISH:

USED ON:
 NEXT ASSY: D961440

1600 CALIFORNIA INSTITUTE OF TECHNOLOGY
 1250 UNIVERSITY AVENUE, PASADENA, CA 91109

LARGE CORE OPTIC COMPONENT
 CARRIER INDEXED STANDOFF
 ASSEMBLY

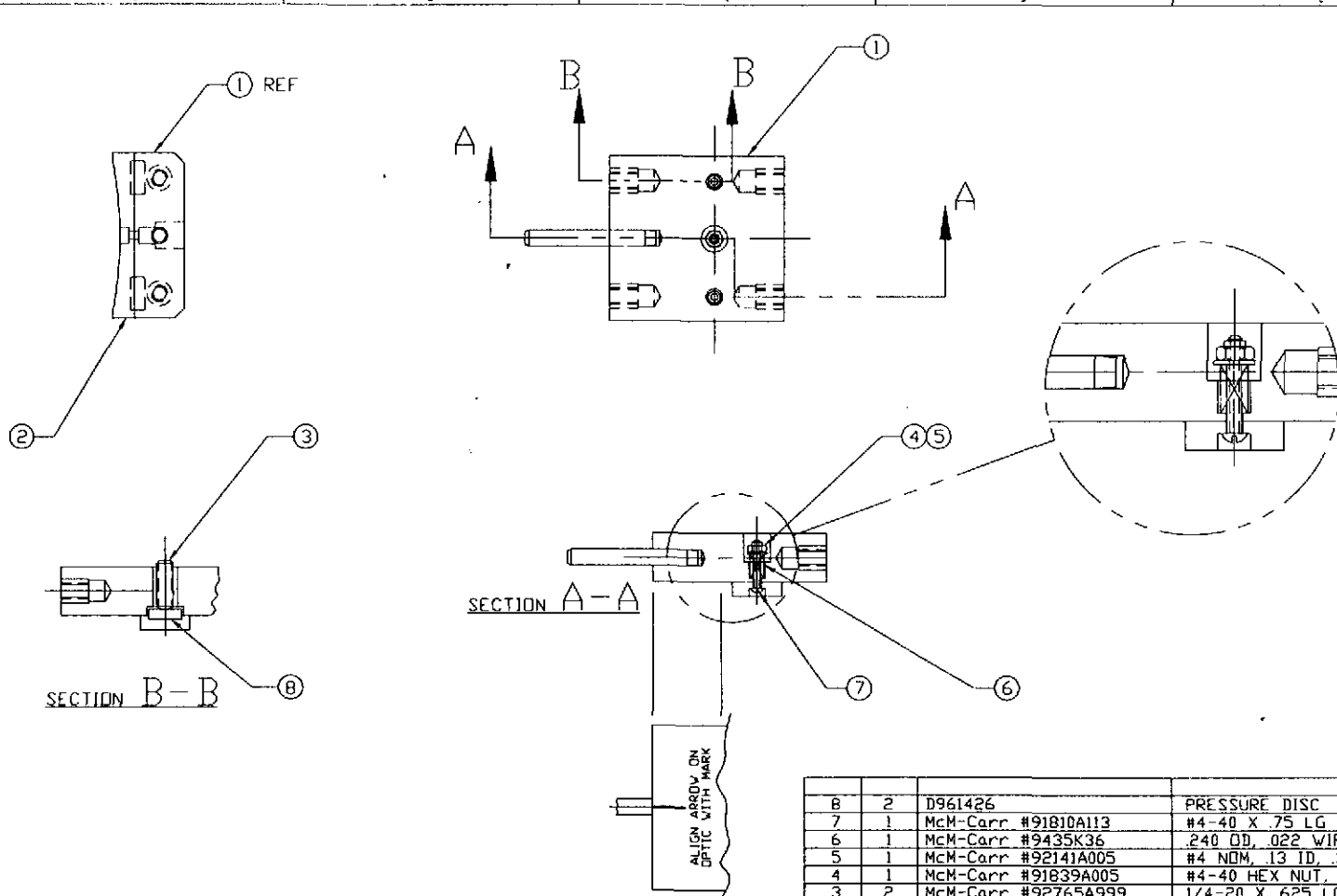
3961454-8 Rev B
 D961454-B-D

DATE: 5/7/97
 BY: EDMC
 CHKD: EDMC
 APP'D: EDMC
 DATE: 2-14-97
 BY: EDMC
 CHKD: KABZT
 APP'D: EDMC
 DATE: 5-7-97
 BY: EDMC
 CHKD: EDMC
 APP'D: EDMC

DRWG NO. REFERENCE DRAWINGS

SHEET 1 OF 1

NOTES: (UNLESS OTHERWISE SPECIFIED)
 ▲ FOR VENDOR INFORMATION, SEE TOP ASSEMBLY MATERIALS LIST D970006 OR D970007.



ELECTRONIC COPY

REF	QTY	PART or DRWG No.	NOMENCLATURE or DESCRIPTION	MATERIAL
8	2	D961426	PRESSURE DISC	-
7	1	McM-Carr #91810A113	#4-40 X .75 LG SLOTTED RD HD SCR	STAINLESS STEEL
6	1	McM-Carr #9435K36	.240 OD, .022 WIRE, .56 F.L. COMB. SPRING	STAINLESS STEEL
5	1	McM-Carr #92141A005	#4 NDM, .13 ID, .31 OD, .032 THK FL WASH	STAINLESS STEEL
4	1	McM-Carr #91839A005	#4-40 HEX NUT, "FLEXLOC"	STAINLESS STEEL
3	2	McM-Carr #92765A999	1/4-20 X .625 LG OVAL POINT SOC SET SCR	STAINLESS STEEL
2	1	D961423	SIDE PAD	-
1	1	D961453	INDEXED STANDOFF	-

REV	DESCRIPTION	DATE	BY	CHKD	DRWN
00	PRE-RELEASE				
01	PRELIMINARY RELEASE				
02	RELEASE FOR FAB				
03	RELEASE FOR FAB				
04	RELEASE FOR FAB				
05	RELEASE FOR FAB				

REV	DESCRIPTION	BCC	SYS	DET	CDS	VE	CC	BT	CHECK	DATE
B	SCN No. E970M6									5-7-97
A	SCN No. E9601B7									2-14-97

SCALE	NTS	SHEET	TOTAL
		8	8