

SECTION B-B
SCALE 3/8

DETAIL C
SCALE 1:1
TYP. 2X

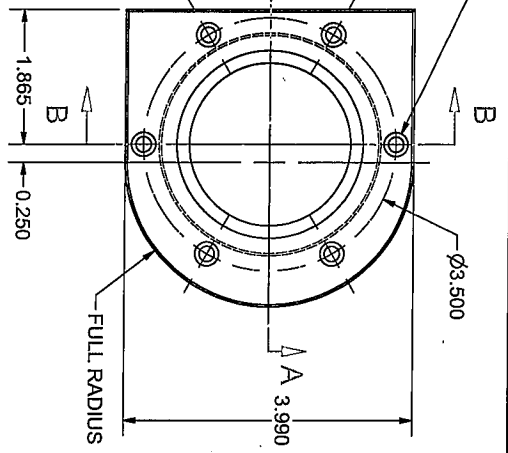
- NOTES:
1. METAL WORKING LUBRICANTS WHICH CONTAIN SULFUR OR SILICONE ARE PROHIBITED.
 2. ONLY WATER-SOLUBLE CUTTING FLUIDS ARE PERMITTED.
 3. BREAK ALL SHARP CORNERS .005 RADIUS MAX.
 4. 32 FINISH ON ALL MACHINED SURFACES UNLESS OTHERWISE SPECIFIED.
 5. PARTS SHALL BE CLEAN AND FREE FROM LOOSE CONTAMINANTS, OIL AND GREASE.
 6. MATERIAL: 304 SS

DO NOT SCALE DRAWING.	
THIS DOCUMENT SHALL NOT BE REPRODUCED, NOR USED BY OR DISCLOSED TO OTHERS EXCEPT AS EXPRESSLY AUTHORIZED BY AMERCO PRODUCTS.	
Unless otherwise specified Dimensions in inches	
X-±	0.035
XX±H	0.020
XXX±E	0.005
ANGLES	±.1°
SCALE	3.75:1
SIZE	B
Customer LIGO	DRAWN: LF
Date: 11/19/2003	CHECKED:
Sheet: 1 OF 1	REV: NC-1
DWG. NO. 031111-1-01	
Inventor File No: 031111-1-01	
Nor-Cal Products, Inc. 1967 South Oregon St./P.O. Box 518, Yreka, CA 96097 1-800-824-4166 or 1-530-842-4457	
TITLE FLANGE, MODIFIED 10" CF	

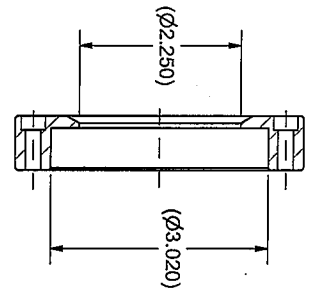
Rev	Description	Dwg. No.	031111-1-01
NC	NEW	Drawn/Date	LF 11/19/2003
NC1	ADDED .50 X 45° CHAMFER	App'd	ECO 11/28/03
	16 FINISH ADDED TO BOTTOM	LF	11-26-03
	OF O-RING GROOVE		11/25/03

4 3 2 1

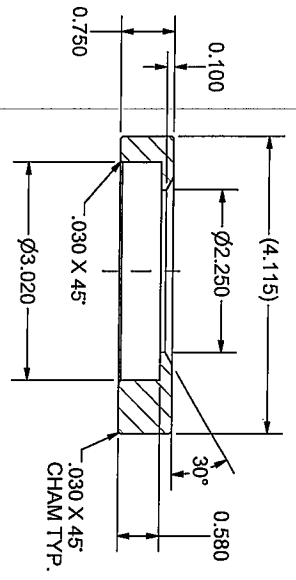
6X $\phi 0.213$ THRU
 $\phi 0.332$ ∇ 0.195
 60° APART



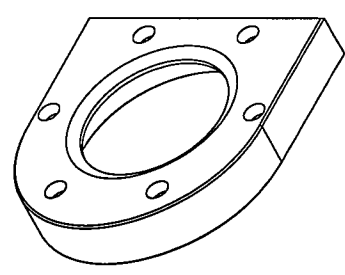
SECTION A-A
 SCALE 0.60 : 1



SECTION B-B
 SCALE 0.60 : 1



SECTION A-A
 SCALE 0.60 : 1

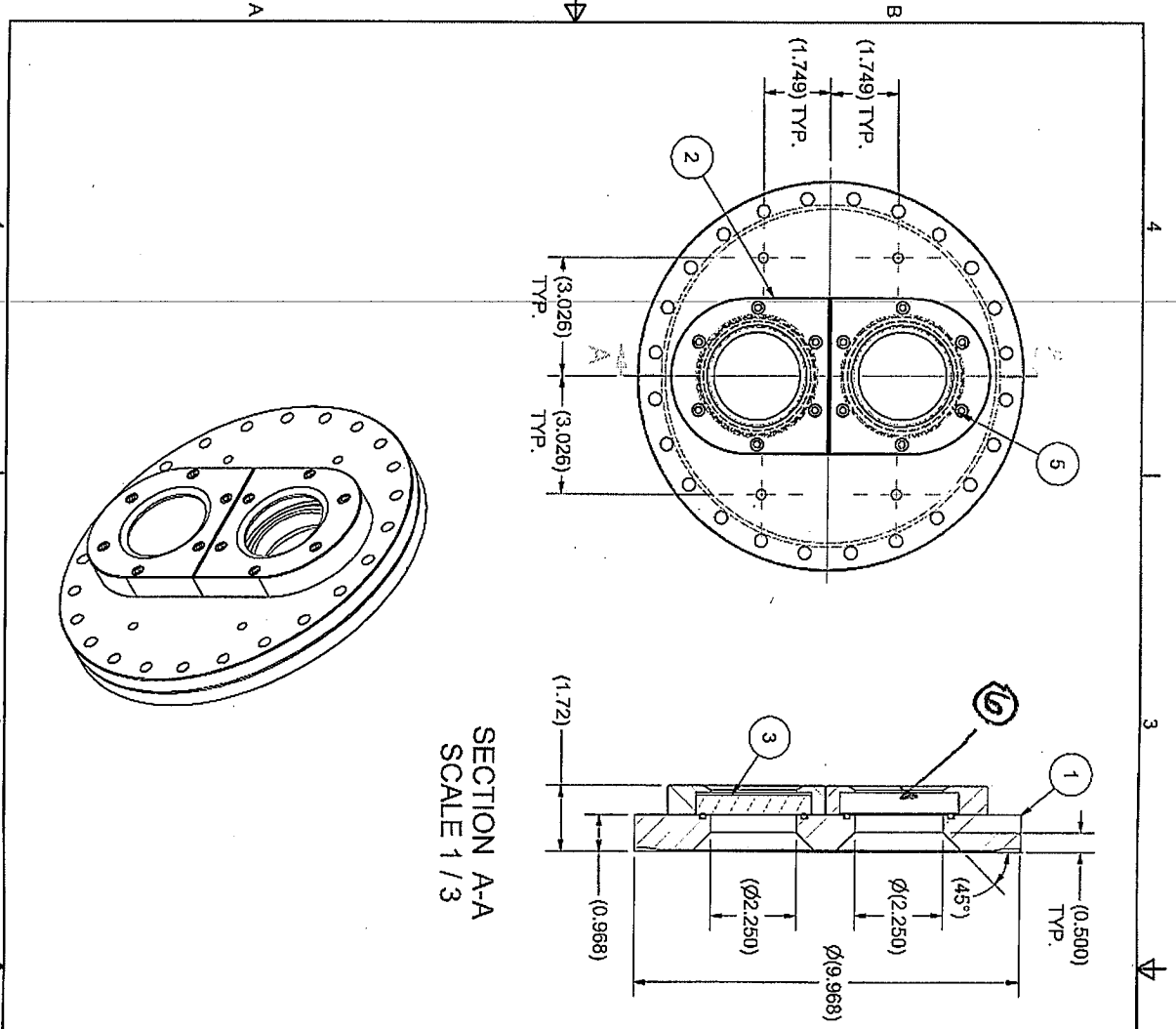


- NOTES:
1. METAL WORKING LUBRICANTS WHICH CONTAIN SULFUR OR SILICONE ARE PROHIBITED.
 2. ONLY WATER-SOLUBLE CUTTING FLUIDS ARE PERMITTED.
 3. BREAK ALL SHARP CORNERS. .005 RADIUS MAX.
 4. 32 FINISH ON ALL MACHINED SURFACES UNLESS OTHERWISE SPECIFIED.
 5. PARTS SHALL BE CLEAN AND FREE FROM LOOSE CONTAMINANTS, OIL AND GREASE.
 6. MATERIAL: 3/4" THICK ALUMINUM PLATE

DO NOT SCALE DRAWING.		Inventor File No: 031111-102	
THIS DOCUMENT SHALL NOT BE REPRODUCED, NOR SHALL THE INFORMATION CONTAINED HEREIN BE DISCLOSED TO ANY OTHER PERSON OR ORGANIZATION WITHOUT THE EXPRESS AUTHORIZATION OF NUCLEAR PRODUCTS.		Nor-Cal Products, Inc. 1967 South Oregon St., P.O. Box 516, Yreka, CA 96097 1-800-824-4166 or 1-530-842-4457	
Unless otherwise specified Dimensions in inches		TITLE EXTERNAL CLAMPING FLANGE	
X-#	0.035	Customer LIGO	DRAWN: LF
XX-#	0.005	Date: 11/19/2003	CHECKED:
ANGLES	$\pm 1/2^\circ$	Sheet: 1 of 1	REV: NC1
SCALE 1:2		DWG NO. 031111-1-02	

Rev/	Description	DWG. NO.	031111-1-02
NC	NEW	Drawn/ Date	11/19/2003
NC1	SPLIT CLAMPING RING, REMOVED ORING GROOVE	App'd/ ECO	11261
		LF	12-03-03
			11261

4 3 2 1



SECTION A-A
SCALE 1/3

Rev	Description	DWG. NO.	031111-1	1
NC	NEW	LF	11/19/2003	11281
P-NC1	ADDED .50 X 45° CHAM	LF	11-26-03	11281
NC1	SPLIT CLAMPING FLG. REMOVED	LF	12-03-03	11281
	O-RING GROOVE, .580 WAS .510			

ITEM	QTY	PART NUMBER	DESCRIPTION
1	1	031111-1-01	MODIFIED 1000-000N, 304 SS
2	2	031111-1-02	CLAMPING FLANGE, ALUMINUM
3	1	VP-300-FS	GLASS, FUSED SILICA
4	2	OR-2-230V	O-RING, VITON
5	12	9551-01032-0	10-32 X 1" LG SHCS, 18-8 SS

- NOTES:
1. METAL WORKING LUBRICANTS WHICH CONTAIN SULFUR OR SILICONE ARE PROHIBITED.
 2. ONLY WATER-SOLUBLE CUTTING FLUIDS ARE PERMITTED.
 3. BREAK ALL SHARP CORNERS .005 RADIUS MAX.
 4. 32 FINISH ON ALL MACHINED SURFACES UNLESS OTHERWISE SPECIFIED.
 5. PARTS SHALL BE CLEAN AND FREE FROM LOOSE CONTAMINANTS, OIL AND GREASE.
 6. MATERIAL: 304 SS OF FLANGE, ALUMINUM CLAMPING FLANGE, VITON O-RING

DO NOT SCALE DRAWING.

THIS DOCUMENT IS A LITIGATION RESISTANCE AGREEMENT. ANY REPRODUCTION OR TRANSMISSION OF THIS DOCUMENT WITHOUT THE WRITTEN PERMISSION OF THE ORIGINAL AUTHOR IS PROHIBITED.

UNLESS OTHERWISE SPECIFIED
Dimensions in inches

X=.1 0.035
XX=.2 0.020
XXX=.5 0.005
ANGLES ± .1°

SCALE 1:3

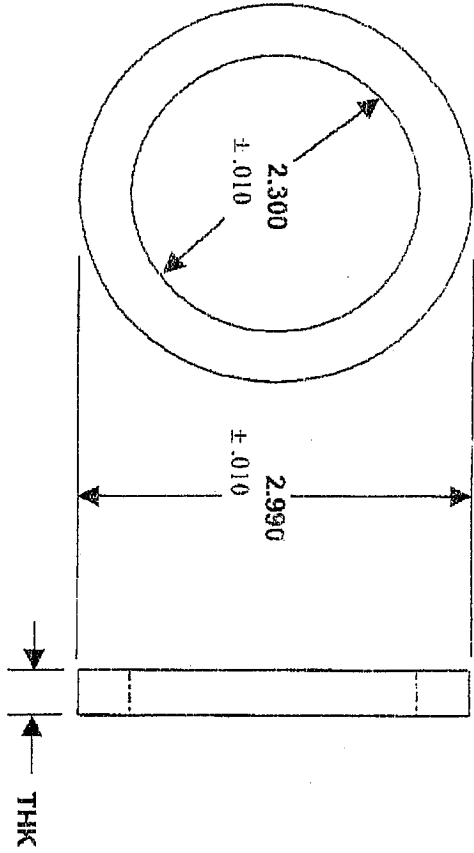
Customer LIGO
Date: 11/19/2003
Sheet: 1 of 1

DRAWN: LF
CHECKED:
REV: NC1

Integrator File No: 031111-1

NC Nor-Cal Products, Inc.
1687 South Oregon St./P.O. Box 519,
Yreka, CA 96097
1-800-824-ALID or 1-530-442-4457

DWG. NO. 031111-1



THK	TOLERANCE
0.060	±.004
0.070	±.004
0.080	±.004

1 Accrolon® 101 Virgin PTFE

REVISION NONE

PART	2.650 X 3.000 X THK	ACCRO-SEAL
MATERIAL	Accrolon® 101	
DRWN	rdb	
DATE	12/9/03	
TOLERANCES	X.X	LIGO HANFORD
	X.XXX	