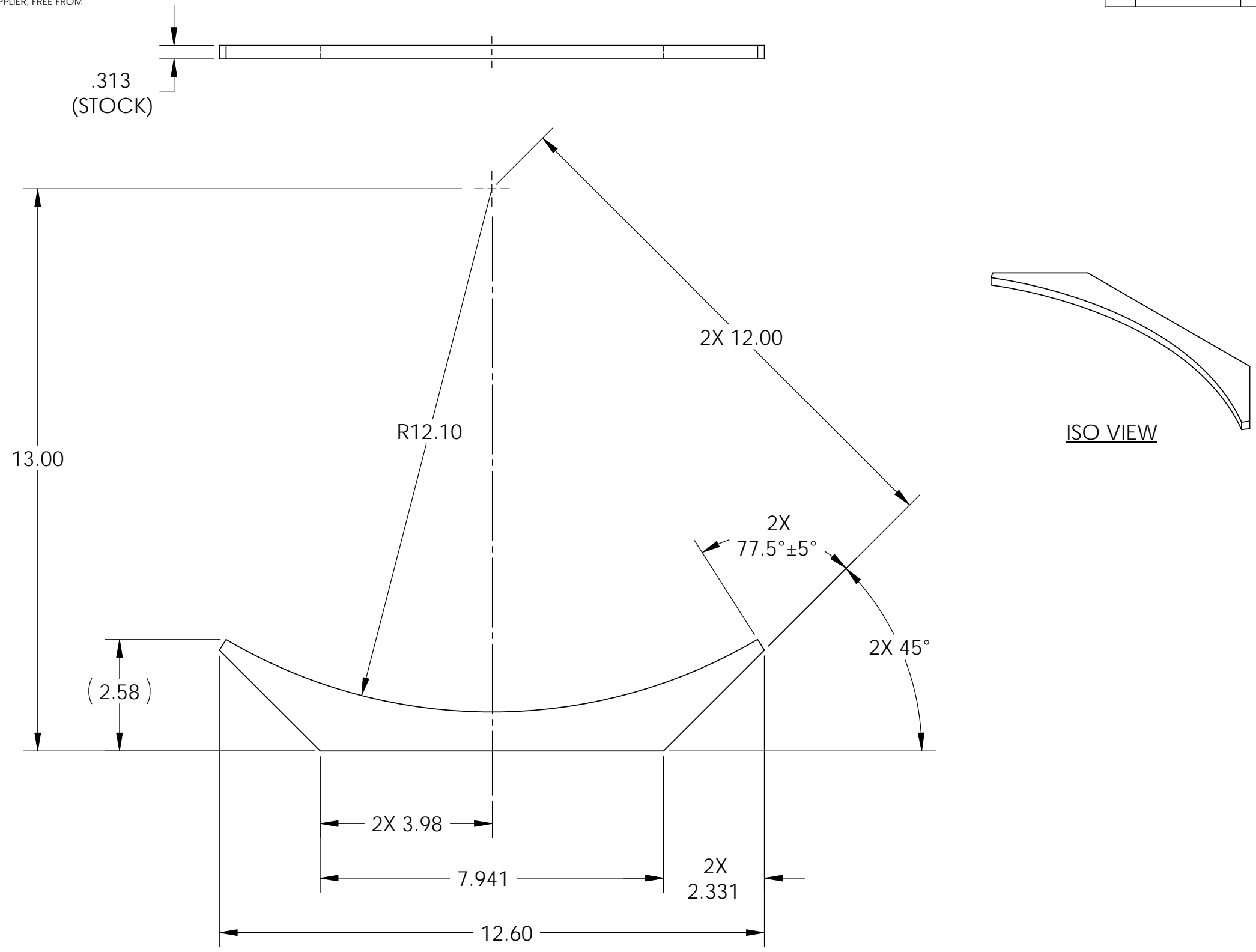


D1002861 aLIGO OPLEV PIER, RIB, PART PDM REV: X-015, DRAWING PDM REV: X-001

8 7 6 5 4 3 2 1

REV.	DATE	DCN #	DRAWING TREE #
v1	21 FEB 2011	E1100106-v1	-
-	-	-	-
-	-	-	-

NOTES CONTINUED:
 5. APPROXIMATE WEIGHT = 1.18 LBS.
 6. SURFACE FINISH TO BE AS-PROCESSED FROM MILL/SUPPLIER, FREE FROM SCRATCHES OR GOUGES.



NOTES AND TOLERANCES: (UNLESS OTHERWISE SPECIFIED)	
DIMENSIONS ARE IN INCHES	
TOLERANCES: .XX ± .03 .XXX ± .005	
ANGULAR ± 0.5°	
1. INTERPRET DRAWING PER ASME Y14.5-1994. 2. REMOVE ALL SHARP EDGES, .005-.015, FOR MACHINED PARTS. ROUND ALL EDGES APPROXIMATELY R.02 FOR SHEET METAL PARTS. 3. DO NOT SCALE FROM DRAWING. 4. ALL MACHINING FLUIDS MUST BE FULLY SYNTHETIC, FULLY WATER SOLUBLE AND FREE OF SULFUR, SILICONE, AND CHLORINE.	
MATERIAL	304 SSTL
FINISH	μinch

CALIFORNIA INSTITUTE OF TECHNOLOGY MASSACHUSETTS INSTITUTE OF TECHNOLOGY		PART NAME		aLIGO OPLEV PIER, RIB	
SYSTEM	ADVANCED LIGO	SUB-SYSTEM	AOS	DESIGNER	J. TERRAZAS
NEXT ASSY	D1002862	DATE	21 FEB 2011	CHECKER	
		APPROVAL		SIZE	B
				DWG. NO.	D1002861
				REV.	
				SCALE: 1:4	PROJECTION:
				SHEET 1 OF 1	

8 7 6 5 4 3 2 1