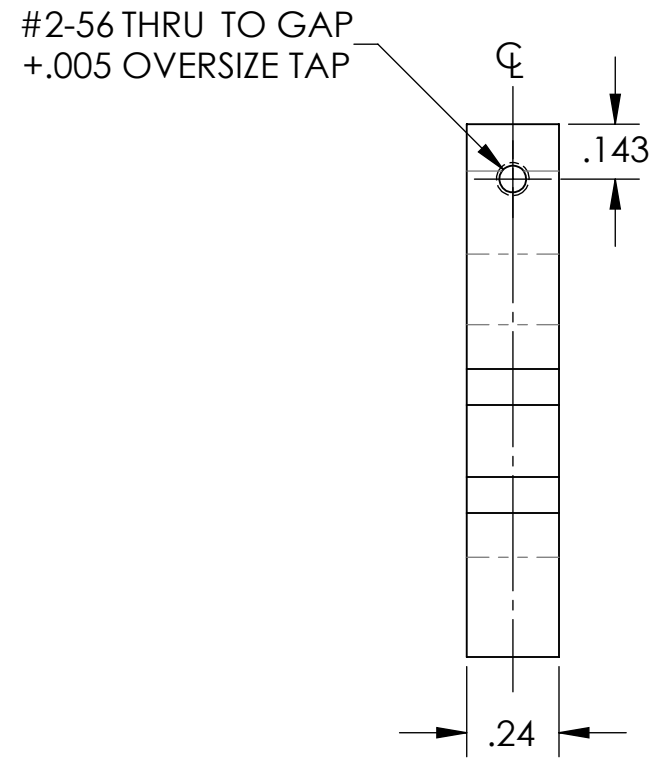
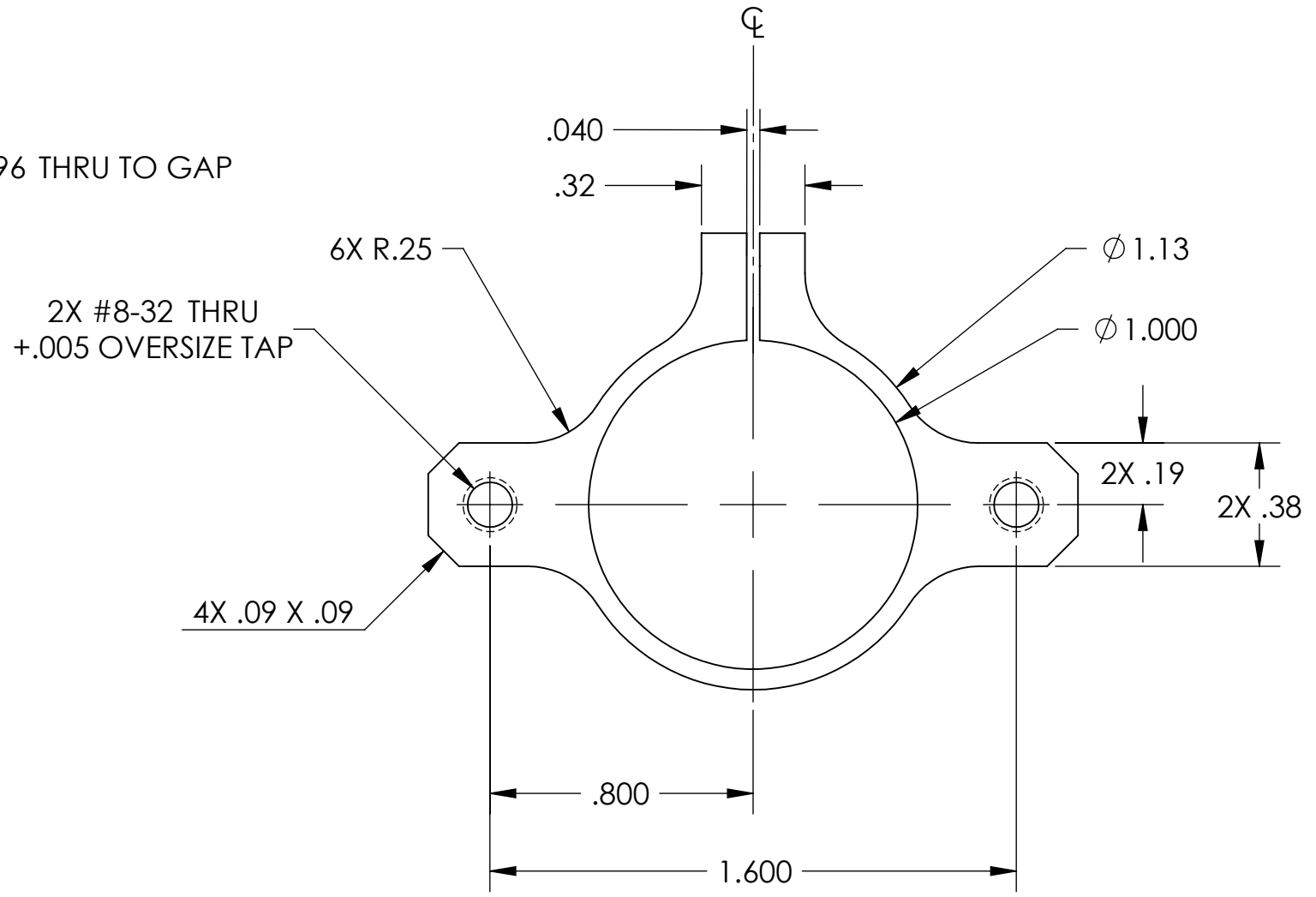
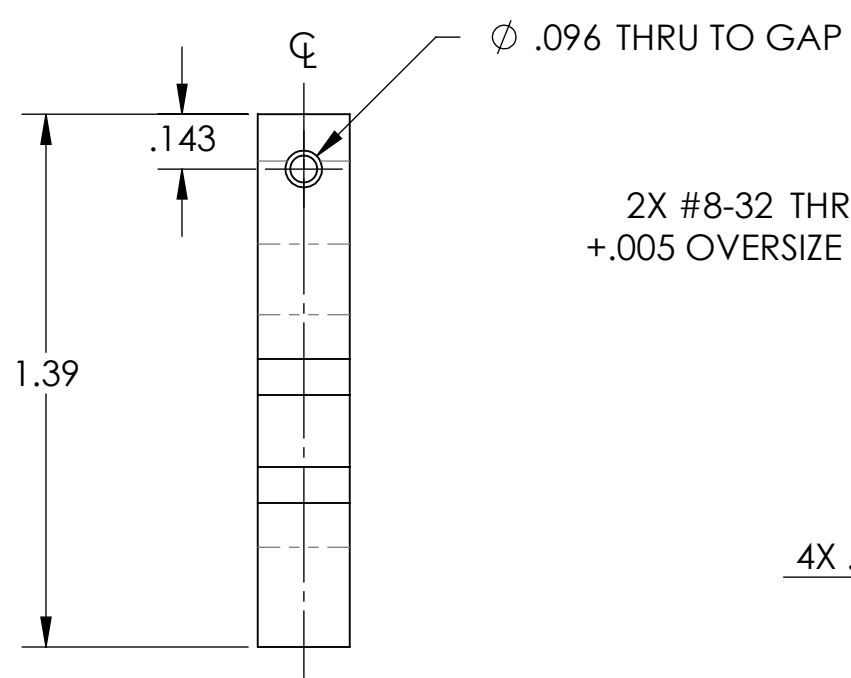
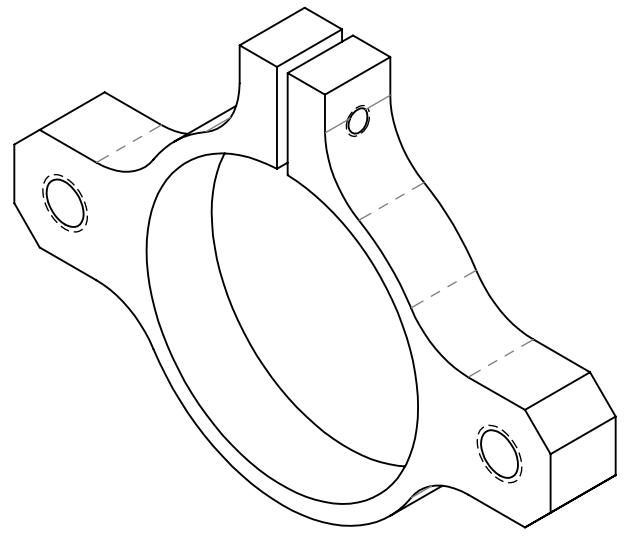
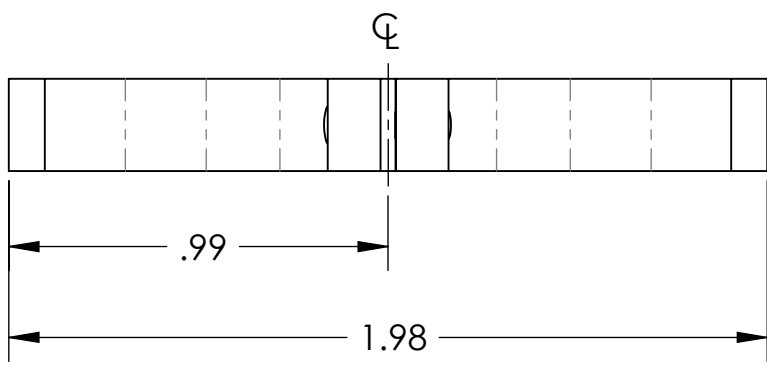


D1002858\_Advanced\_LIGO\_SUS\_AOSEM\_Adjustment\_Collar\_(Reverse\_Side), PART PDM REV: X-003, DRAWING PDM REV: X-000

**NOTES CONTINUED:**  
 5. SCRIBE, ENGRAVE, OR MECHANICALLY STAMP (NO DYES OR INKS) A UNIQUE THREE DIGIT SERIAL NUMBER & REVISION NUMBER ON EACH PART. SERIAL NUMBERS START AT 001 FOR THE FIRST ARTICLE AND PROCEED CONSECUTIVELY. BAG AND TAG PARTS WITH THEIR DRAWING PART NUMBER, REVISION, VARIANT OR "TYPE" (IF APPLICABLE), AND QUANTITY. IF PARTS ARE TOO SMALL TO SCRIBE, BAGGING AND TAGGING ALONE IS SUFFICIENT.  
 EXAMPLE (PART): 001-v1  
 EXAMPLE (TAG): DXXXXXXX-VY, TYPE-XX, QTY: TBD  
 6. MACHINE ALL SURFACES TO REMOVE OXIDES AND MILL FINISH. USE OF ABRASIVE REMOVAL TECHNIQUES IS NOT ALLOWED.  
 7. ALL PARTS SHALL BE MANUFACTURED IN ACCORDANCE WITH LIGO SPECIFICATION E0900364.

| REV. | DATE        | DCN #    | DRAWING TREE # |
|------|-------------|----------|----------------|
| v1   | 10 AUG 2010 | E1000301 | E080191        |
| -    | -           | -        | -              |
| -    | -           | -        | -              |



| NOTES AND TOLERANCES: (UNLESS OTHERWISE SPECIFIED)   |  |  |  | LIGO                                  |  | PART NAME                              |  |
|--|--|--|--|---------------------------------------|--|--|--|
| DIMENSIONS ARE IN INCHES   |  |  |  | CALIFORNIA INSTITUTE OF TECHNOLOGY    |  | AOSEM ADJUSTMENT COLLAR (REVERSE SIDE) |  |
| 1. INTERPRET DRAWING PER ASME Y14.5-1994.  |  |  |  | MASSACHUSETTS INSTITUTE OF TECHNOLOGY |  |  |  |
| 2. REMOVE ALL SHARP EDGES, R.02 MIN.   |  |  |  | ADVANCED LIGO                         |  | SUB-SYSTEM                             |  |
| 3. DO NOT SCALE FROM DRAWING.  |  |  |  | SUS                                   |  | DESIGNER D. BRIDGES 28 OCT 2010        |  |
| 4. ALL MACHINING FLUIDS MUST BE FULLY SYNTHETIC, FULLY WATER SOLUBLE AND FREE OF SULFUR, SILICONE, AND CHLORINE. |  |  |  | NEXT ASSY                             |  | DRAFTER D. BRIDGES 28 OCT 2010         |  |
| MATERIAL 6061-T6 Al  |  |  |  | FINISH 63 $\mu$ inch                  |  | CHECKER B. MOORE 01 NOV 2010           |  |
| TOLERANCES:<br>.XX $\pm$ .01<br>.XXX $\pm$ .005  |  |  |  | SCALE: 2:1                            |  | PROJECTION:                            |  |
| ANGULAR $\pm$ 0.5°   |  |  |  | SHEET 1 OF 1                          |  | REVISION                               |  |
|  |  |  |  | B                                     |  | D1002858                               |  |
|  |  |  |  |                                       |  | v1                                     |  |