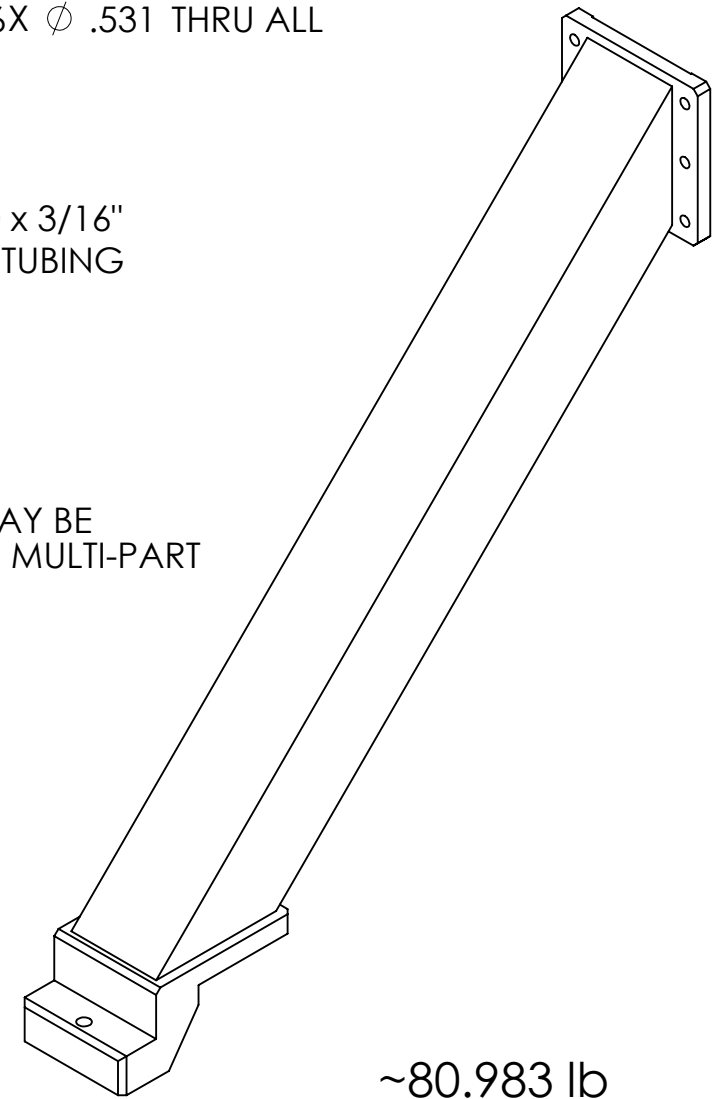
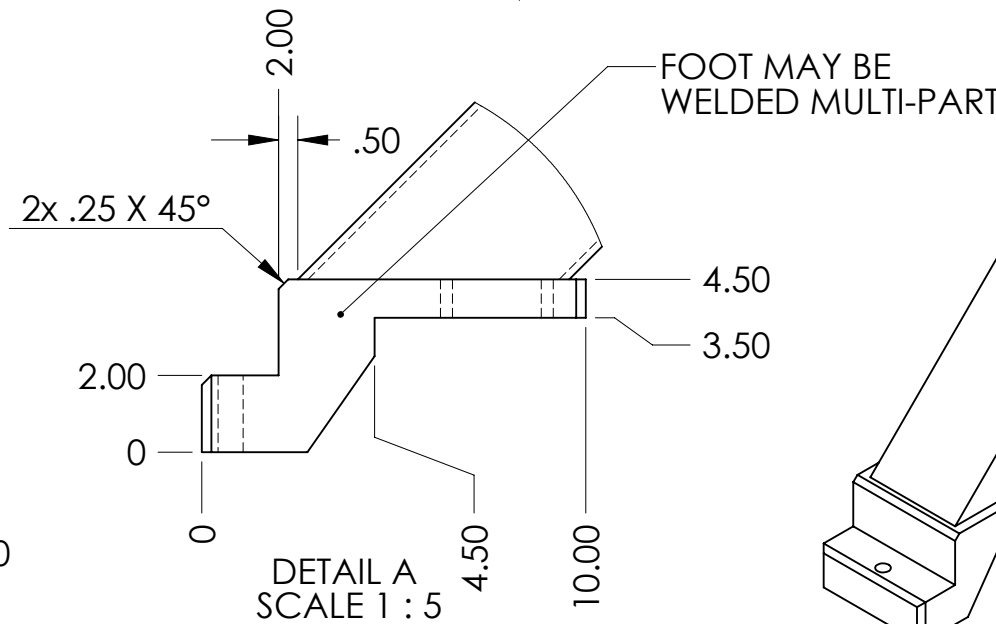
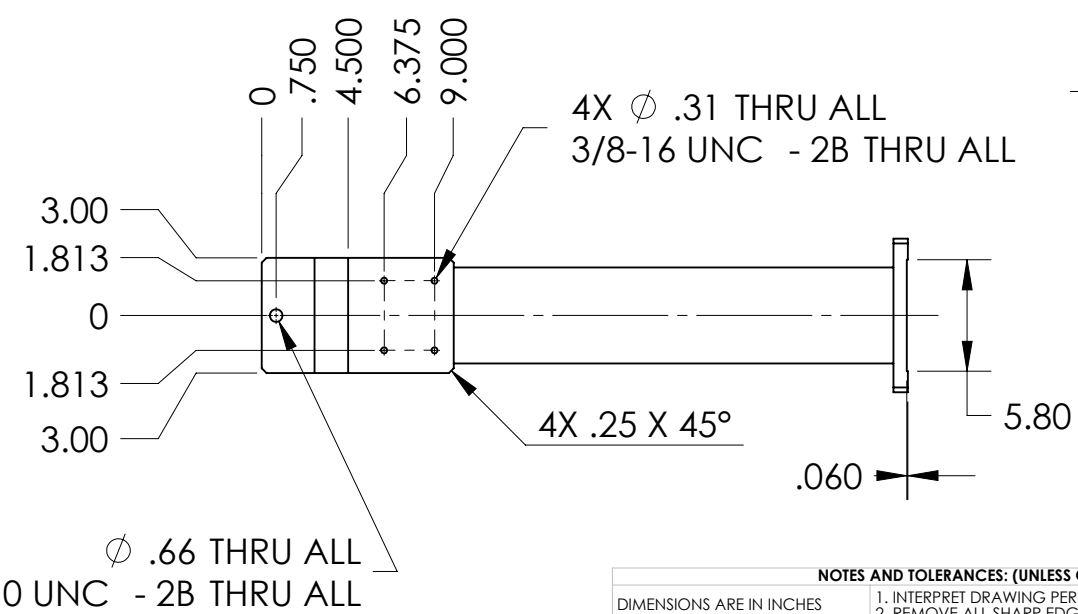
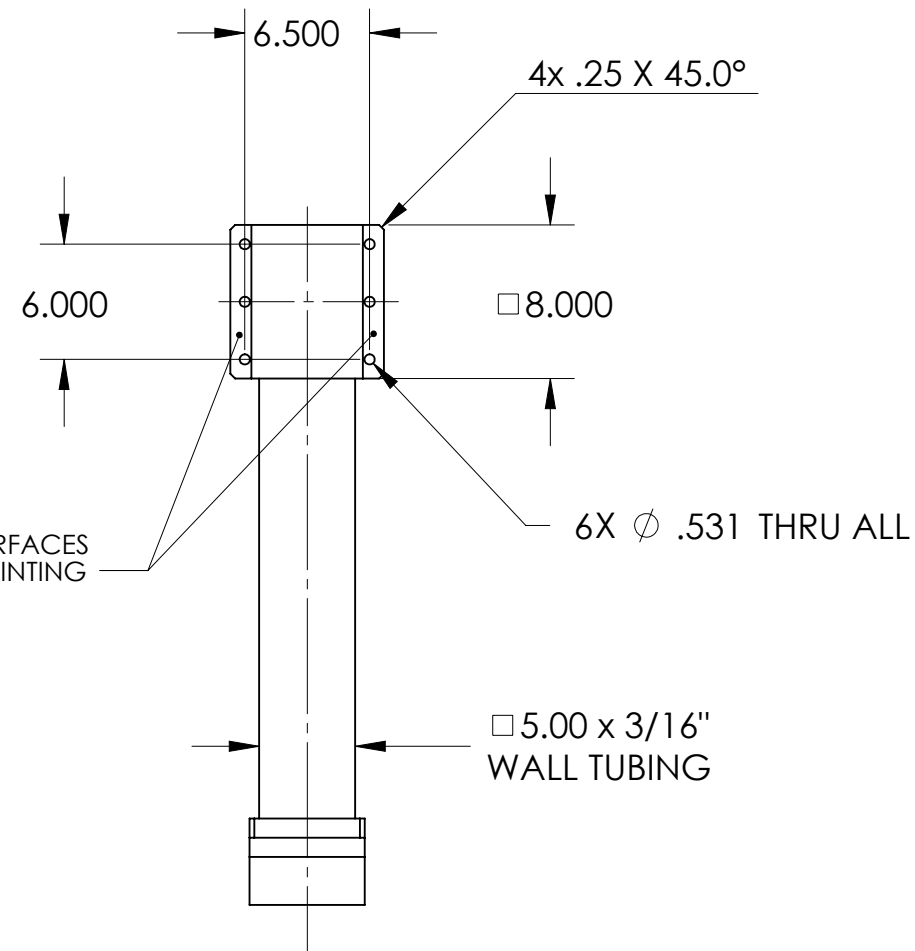
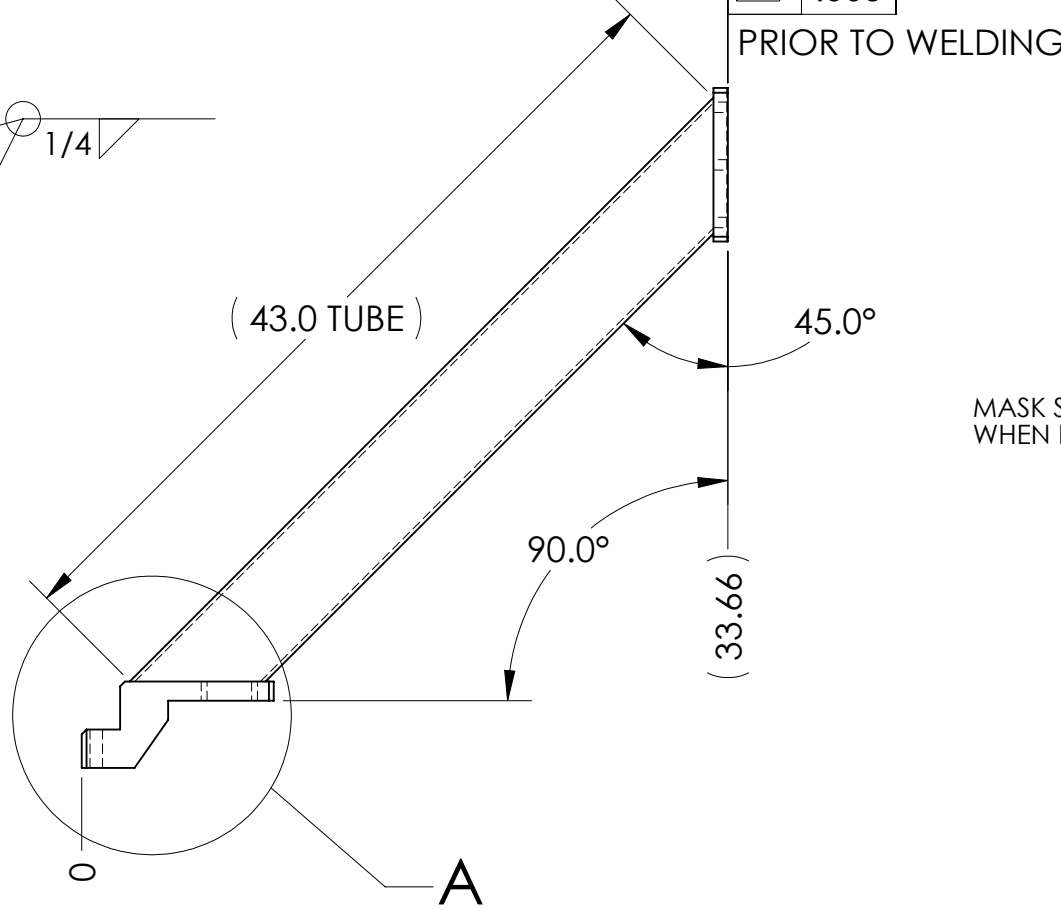
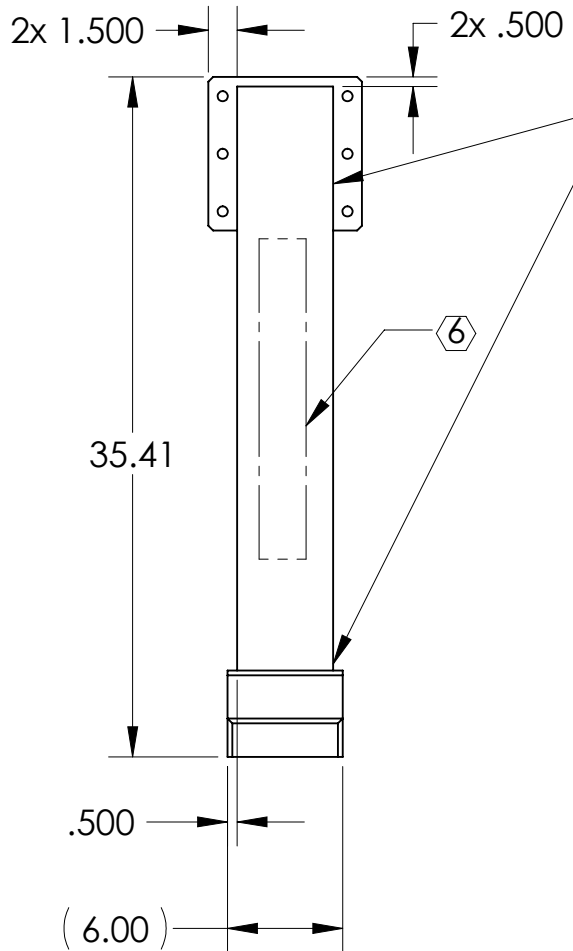


REV.	DATE	DCN #	DRAWING TREE #
V1	22 OCT 2010	E1000614	-
-	-	-	-
-	-	-	-

NOTES CONTINUED:

- 5. TUBE: ASTM **A500** Grade B, PLATE: **A36** STEEL
- ⑥. PART NUMBER (DRAWING NO. PLUS REVISION) TO BE CLEARLY MARKED ON THE PART NEAR LOCATION SHOWN  
EXAMPLE: **D1001462-V1** (~ 1" CHARACTERS)
- 7. BEFORE FINISHING REMOVE ALL: MILL SCALE, OXYDATION, GREASE, OIL, DIRT, FINGERPRINTS, CONTAMINANTS, ETC.
- 8. PRIME WITH SHERWIN WILLIAMS INDUSTRIAL WASH PRIMER "**P60G2**" PER SPECIFICATION.
- 9. PAINT SMOOTH WHITE, SHERWIN WILLIAMS "**POLANE HS-PLUS**" POLYURETHANE ENAMEL P/N F63W66.



D1002798 Angle External Stand Vertical Support, HAM-ISI Fixture, PART PDM REV: X-001, DRAWING PDM REV: X-001

**NOTES AND TOLERANCES: (UNLESS OTHERWISE SPECIFIED)**

1. INTERPRET DRAWING PER ASME Y14.5-1994.  
 2. REMOVE ALL SHARP EDGES, R.02 MIN.  
 3. DO NOT SCALE FROM DRAWING.  
 4. ALL MACHINING FLUIDS MUST BE FULLY SYNTHETIC, FULLY WATER SOLUBLE AND FREE OF SULFUR, SILICONE, AND CHLORINE.

DIMENSIONS ARE IN INCHES  
 TOLERANCES:  
 .XX ± .05  
 .XXX ± .012  
 ANGULAR ± 0.5°

MATERIAL: SEE NOTES  
 FINISH: 128 μinch

<b>LIGO</b> CALIFORNIA INSTITUTE OF TECHNOLOGY MASSACHUSETTS INSTITUTE OF TECHNOLOGY		PART NAME ANGLE, EXTERNAL STAND VERTICAL SUPPORT, HAM-ISI FIXTURE	
DESIGNER SBARNUM	1 OCT 2010	SIZE DWG. NO. B	D1002798
DRAFTER SBARNUM	6 OCT 2010	REV. v1	
CHECKER FMATCHARD	20 OCT 2010	SCALE: 1:10	PROJECTION:
APPROVAL KAMASON	22 OCT 2010	SHEET 1 OF 1	