

8

7

6

5

4

3

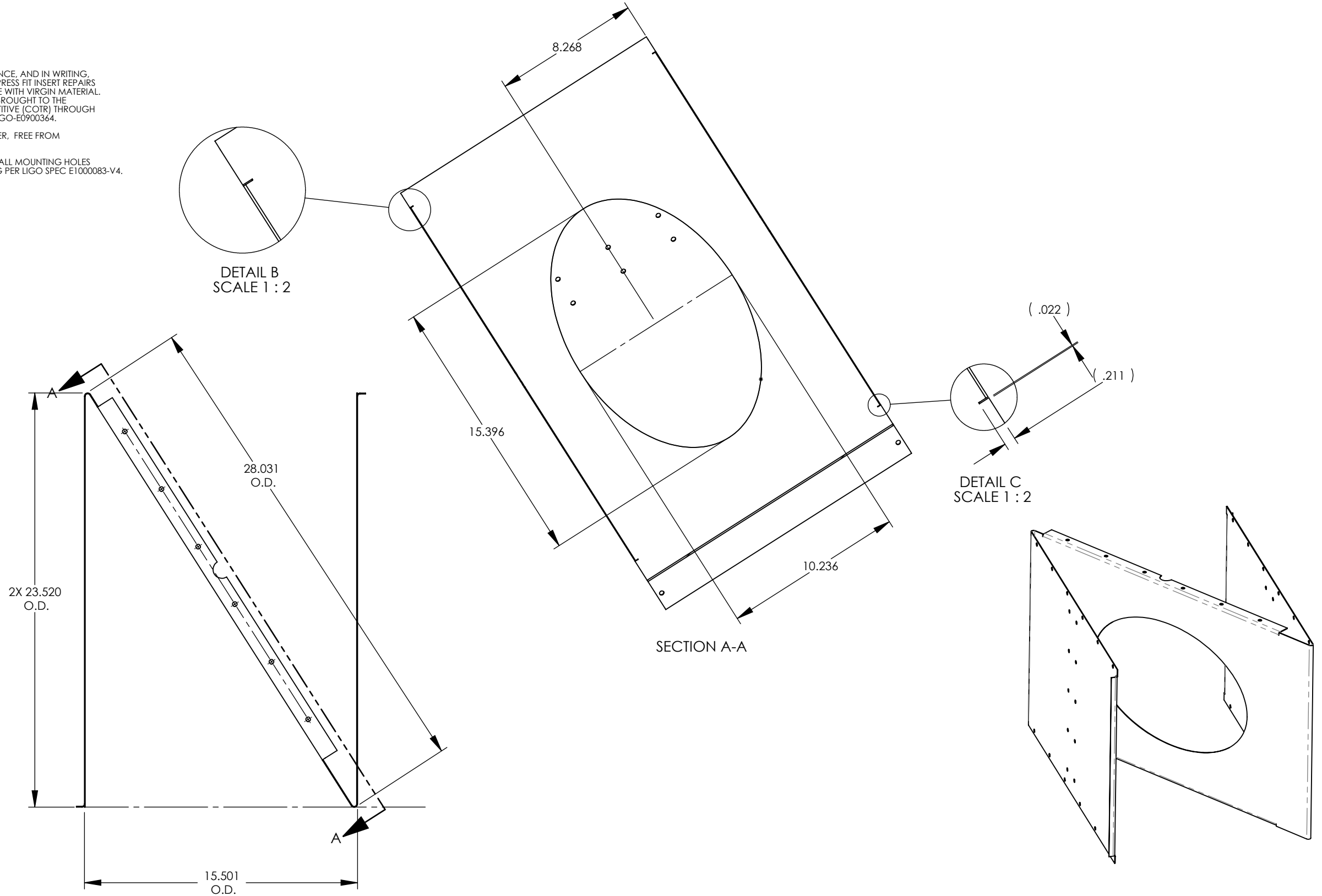
2

1

NOTES CONTINUED:

- 5. MACHINE PART NUMBER, REVISION, SERIAL NUMBER, .020 DEEP WITH MINIMUM CHARACTER HEIGHT .156 APPROXIMATELY WHERE SHOWN. SERIAL NUMBER WILL START AT 001 AND PROCEED CONSECUTIVELY. EXAMPLE: D100XXXX-V1 S/N 001
- 6. ALL PARTS SHALL BE MANUFACTURED IN ACCORDANCE WITH LIGO SPECIFICATION E0900364.
- 7. ALL MATERIAL IS TO BE VIRGIN MATERIAL (i.e. NO WELD REPAIRS OR PLUGS) UNLESS APPROVED IN ADVANCE IN WRITING BY LIGO, REFER TO LIGO-E0900364.
- 8. NO REPAIRS SHALL BE MADE UNLESS APPROVED IN ADVANCE, AND IN WRITING, BY LIGO LABORATORY. IN GENERAL WELD REPAIRS AND PRESS FIT INSERT REPAIRS ARE NEVER ACCEPTABLE; THE MATERIAL SHOULD BE MADE WITH VIRGIN MATERIAL. SPECIAL CIRCUMSTANCES CAN BE REVIEWED IF / WHEN BROUGHT TO THE ATTENTION OF LIGO CONTRACTING OFFICER'S REPRESENTATIVE (COTR) THROUGH A MATERIAL REVIEW BOARD (MRB) PROCESS, REFER TO LIGO-E0900364.
- 9. SURFACE FINISH TO BE AS-PROCESSED FROM MILL/SUPPLIER, FREE FROM SCRATCHES & GOUGES.
- 10. PART WILL BE PORCELAIN COATED AFTER FABRICATION. ALL MOUNTING HOLES WILL BE MASKED ($\varnothing 0.63$) PRIOR TO PORCELAIN COATING PER LIGO SPEC E1000083-V4.

REV.	DATE	DCN #	DRAWING TREE #
v1	18 NOV 2010	E1000736	-
-	-	-	-
-	-	-	-



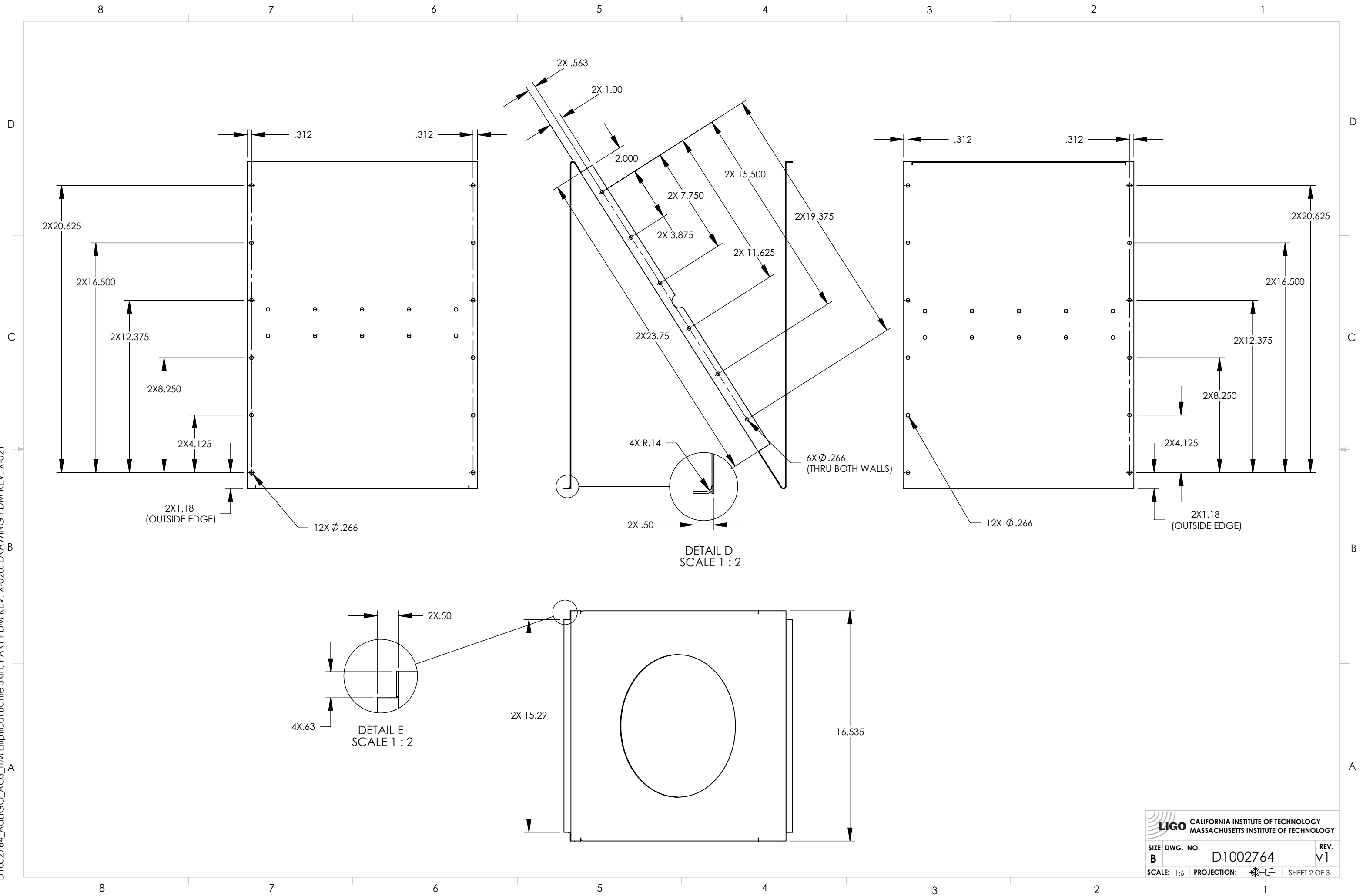
D1002764_AdlIGO_AOS_ITM Elliptical Baffle Skin, PART PDM REV: X-020, DRAWING PDM REV: X-021

NOTES AND TOLERANCES: (UNLESS OTHERWISE SPECIFIED)	
DIMENSIONS ARE IN	
TOLERANCES:	
.XX	± .01
.XXX	± .015
ANGULAR ± 1.0°	
1. INTERPRET DRAWING PER ASME Y14.5-1994.	
2. REMOVE ALL SHARP EDGES, R.02 MIN.	
3. DO NOT SCALE FROM DRAWING.	
4. ALL MACHINING FLUIDS MUST BE FULLY SYNTHETIC, FULLY WATER SOLUBLE AND FREE OF SULFUR, SILICONE, AND CHLORINE.	
MATERIAL	FINISH
A424 TYPE I, 18GA, SSSL	SEE NOTE 7

 CALIFORNIA INSTITUTE OF TECHNOLOGY MASSACHUSETTS INSTITUTE OF TECHNOLOGY	PART NAME	
	ITM ELLIPTICAL BAFFLE SKIN	
SYSTEM	SUB-SYSTEM	DESIGNER
		M.RUIZ
		06 DEC 2010
		DRAFTER
		M.RUIZ
		02 NOV 2010
		CHECKER
		APPROVAL
NEXT ASSY	D1002750	

SIZE	DWG. NO.	REV.
B	D1002764	v1
SCALE: 1:6	PROJECTION:	SHEET 1 OF 3

D1002764_AcLIGO_AOS_ITM Elliptical Baffle Skin, PART PDM REV: X-020, DRAWING PDM REV: X-021



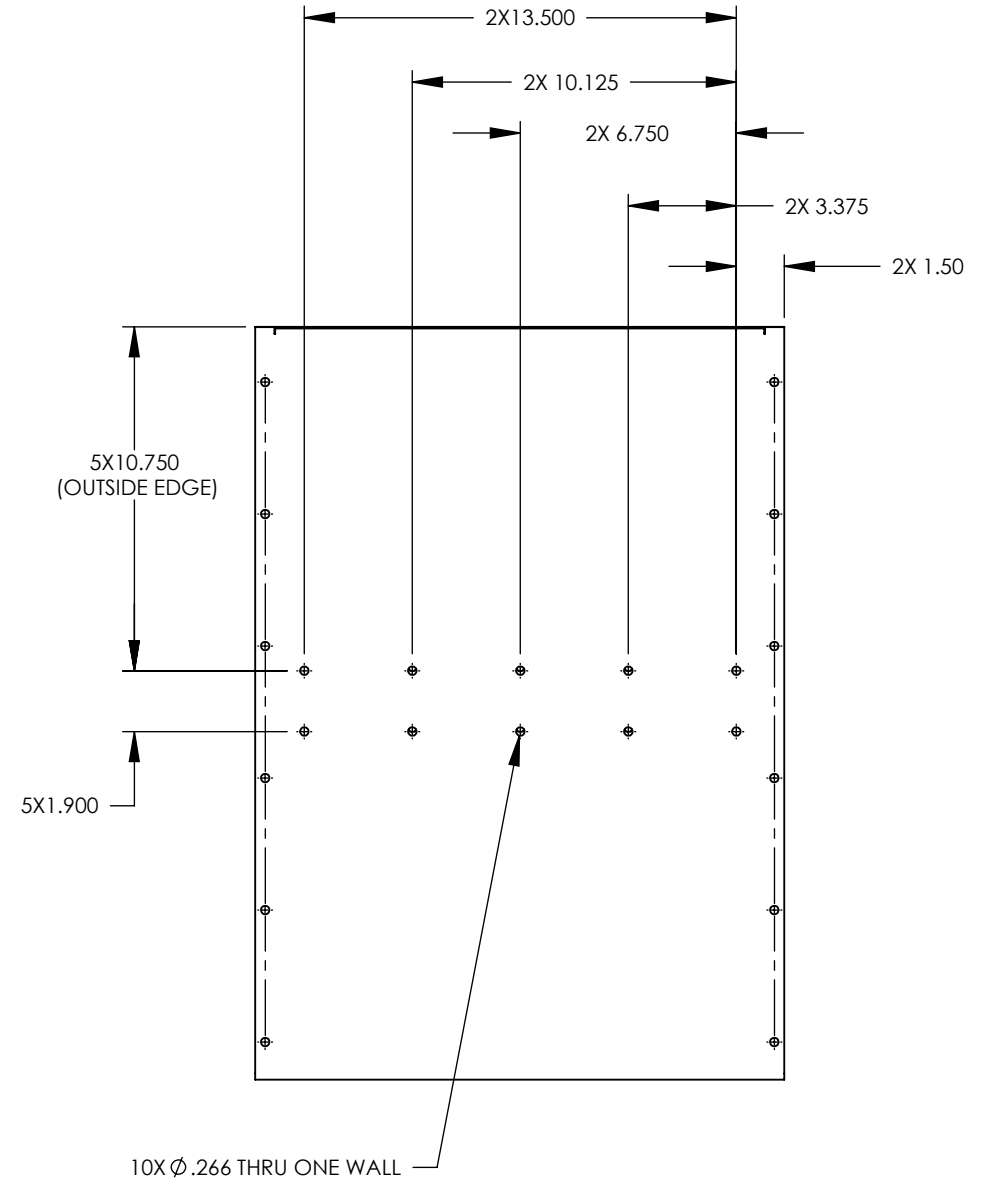
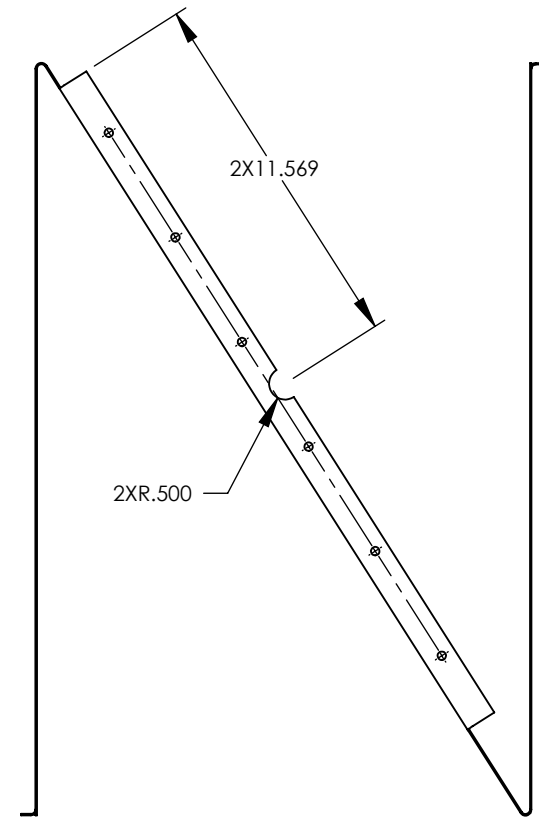
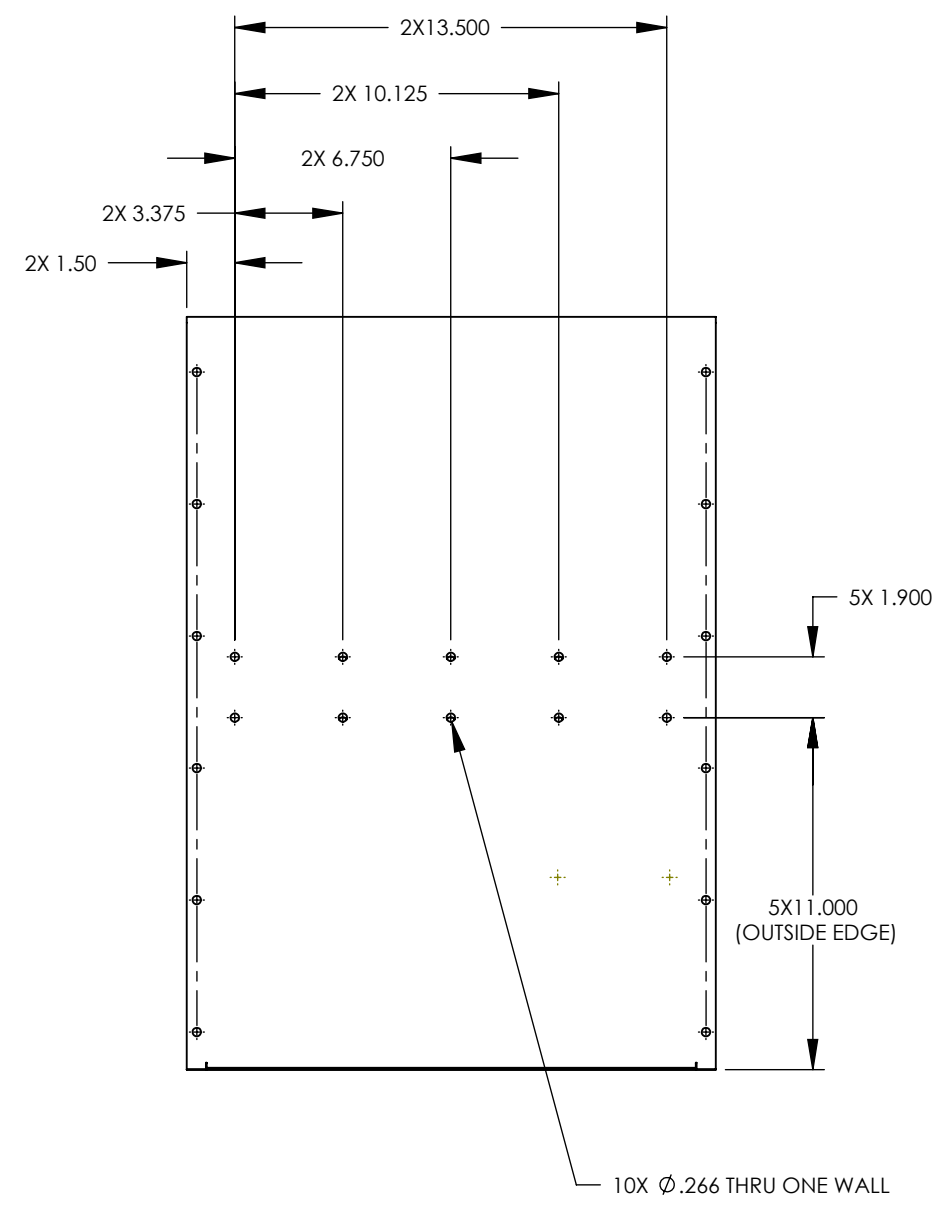
LIGO CALIFORNIA INSTITUTE OF TECHNOLOGY MASSACHUSETTS INSTITUTE OF TECHNOLOGY	
SIZE B	DWG. NO. D1002764
SCALE: 1:6	PROJECTION:
REV. v1	SHEET 2 OF 3

D1002764_AcLIGO_AOS_ITM Elliptical Baffle Skin, PART PDM REV: X-020, DRAWING PDM REV: X-021

8 7 6 5 4 3 2 1

D
C
B
A

D
C
B
A



LIGO CALIFORNIA INSTITUTE OF TECHNOLOGY
MASSACHUSETTS INSTITUTE OF TECHNOLOGY

SIZE	DWG. NO.	REV.
B	D1002764	v1
SCALE: 1:6		PROJECTION:
		SHEET 3 OF 3

8 7 6 5 4 3 2 1