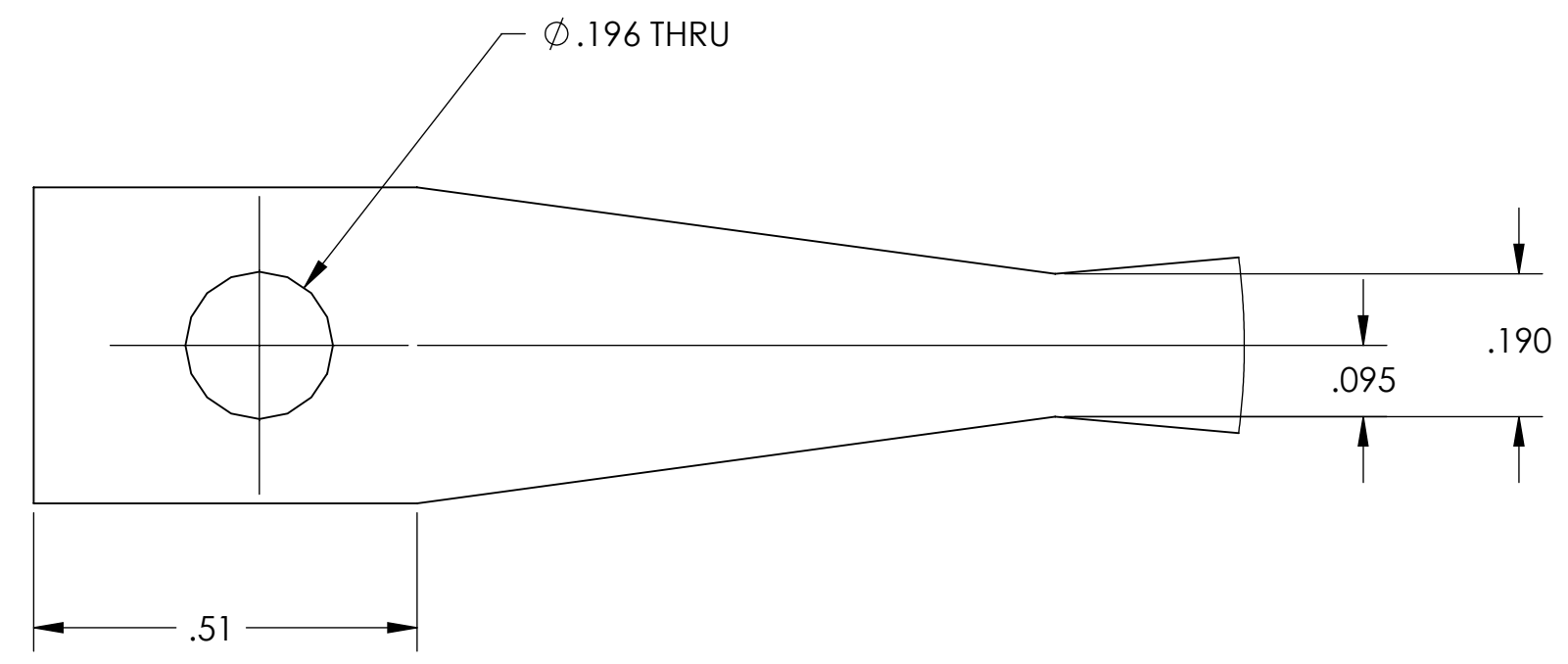
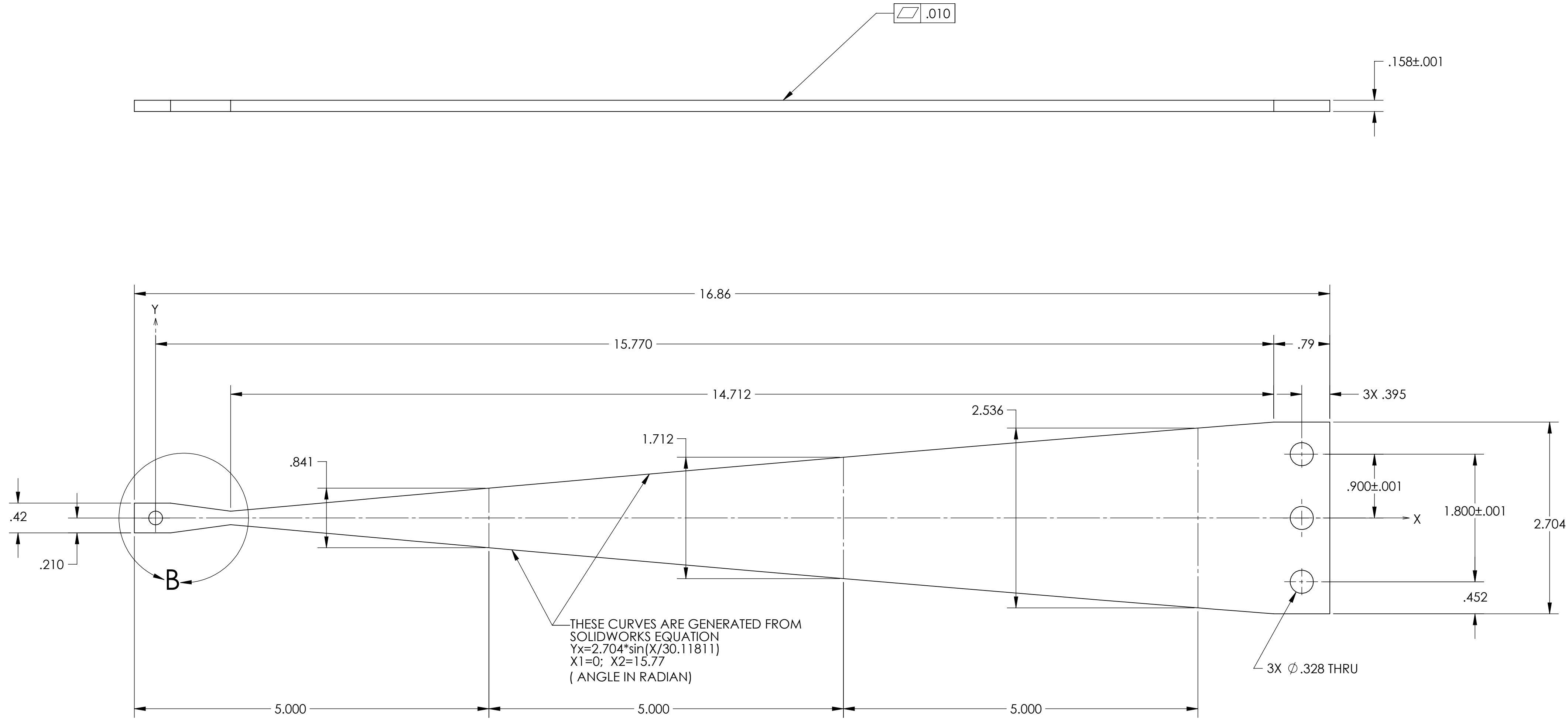


NOTES CONTINUED:
 5. SCRIBE, ENGRAVE (A VIBRATORY TOOL MAY BE USED), LASER MARK OR MECHANICALLY STAMP (NO INKS OR DYES) DRAWING PART NUMBER, REVISION (AND VARIANT OR "TYPE" IF APPLICABLE) ON NOTED SURFACE OF PART FOLLOWED ON THE NEXT LINE WITH A THREE DIGIT SERIAL NUMBER. SERIAL NUMBERS START AT 001 FOR THE FIRST ARTICLE AND PROCEED CONSECUTIVELY. USE MINIMUM 0.12" HIGH CHARACTERS, UNLESS THE SIZE OF THE PART DICTATES SMALLER CHARACTERS. EXAMPLE: DXXXXXX-VY, TYPE-XX, S/N XXX

6. PART TO BE HEAT TREATED AND PLATED IN ACCORDANCE WITH LIGO SPECIFICATION E0900023-V10.
 7. MACHINE ALL SURFACES TO REMOVE OXIDES AND MILL FINISH.
 8. ALL PARTS SHALL BE MANUFACTURED IN ACCORDANCE WITH LIGO SPECIFICATION E0900364 AND E0900023. E0900023 TAKES PRECEDANCE.

REV.	DATE	DCN #	DRAWING TREE #
v1	18 NOV 2010	E1101007	
v2	8 MAY 2012		
v3	21 MAY 2012	E1101007	
v4	21 JUN 2012	E1101007	
v5	01 AUG 2012	E1101007	



DETAIL B
SCALE 4 : 1

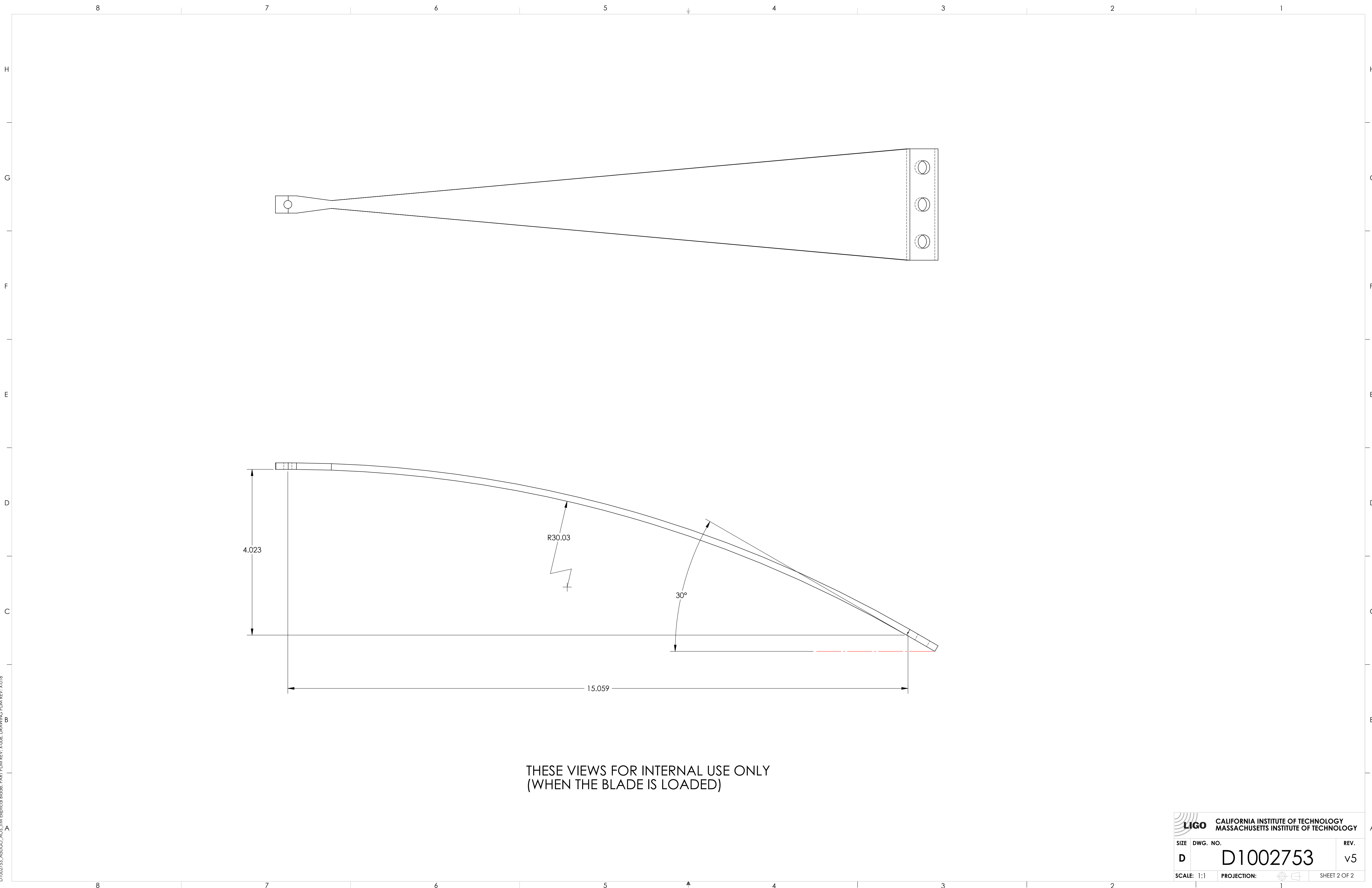
NOTES AND TOLERANCES: (UNLESS OTHERWISE SPECIFIED)	
1. INTERPRET DRAWING PER ASME Y14.5-1994. 2. REMOVE ALL SHARP EDGES, R.02 MIN. 3. DO NOT SCALE FROM DRAWING. 4. ALL MACHINING FLUIDS MUST BE FULLY SYNTHETIC, FULLY WATER SOLUBLE AND FREE OF SULFUR, SILICONE, AND CHLORINE.	
DIMENSIONS ARE IN INCHES TOLERANCES: .XX ± .01 .XXX ± .005 ANGULAR ± 1.0°	MATERIAL: MARAGING STEEL C250 FINISH: 63 μinch

LIGO CALIFORNIA INSTITUTE OF TECHNOLOGY
 MASSACHUSETTS INSTITUTE OF TECHNOLOGY

SYSTEM: ADVANCED LIGO
 SUB-SYSTEM: AOS
 NEXT ASSY: D1200140

PART NAME		ITM Elliptical Blade	
DESIGNER	N.Nguyen	01 Jun 2010	SIZE DWG. NO.
DRAFTER	M.RUIZ	23 NOV 2010	D D1002753
CHECKER	L. AUSTIN	11 JUN 2012	
APPROVAL	M. SMITH	11 JUN 2012	SCALE: 1:1
PROJECTION:		SHEET 1 OF 2	

D1002753_AudiGO_AOS_TIM_Elliptical Blade_PART PDM REV: X-008_DRAWING PDM REV: X-018



THESE VIEWS FOR INTERNAL USE ONLY
(WHEN THE BLADE IS LOADED)

 CALIFORNIA INSTITUTE OF TECHNOLOGY MASSACHUSETTS INSTITUTE OF TECHNOLOGY		
SIZE	DWG. NO.	REV.
D	D1002753	v5
SCALE: 1:1	PROJECTION:	SHEET 2 OF 2

D1002753_AduLIGO_ACS_TIM_Elliptical Blade_PART_PDM_REV_X:008_DRAWING_PDM_REV_X:018