

D1002674 base plate, PART PDM REV: X-000, DRAWING PDM REV: X-000

REV.	DATE	DCN #	DRAWING TREE #
-	-	-	-
-	-	-	-
-	-	-	-

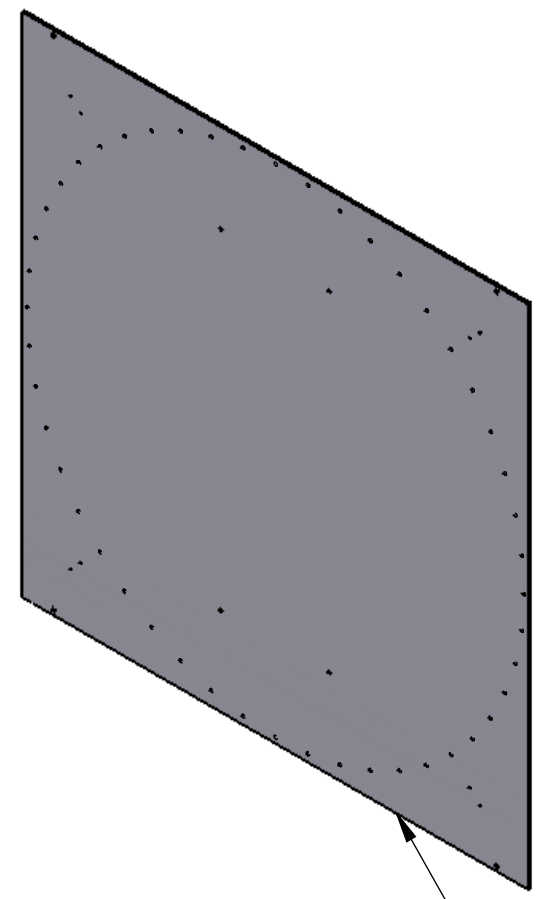
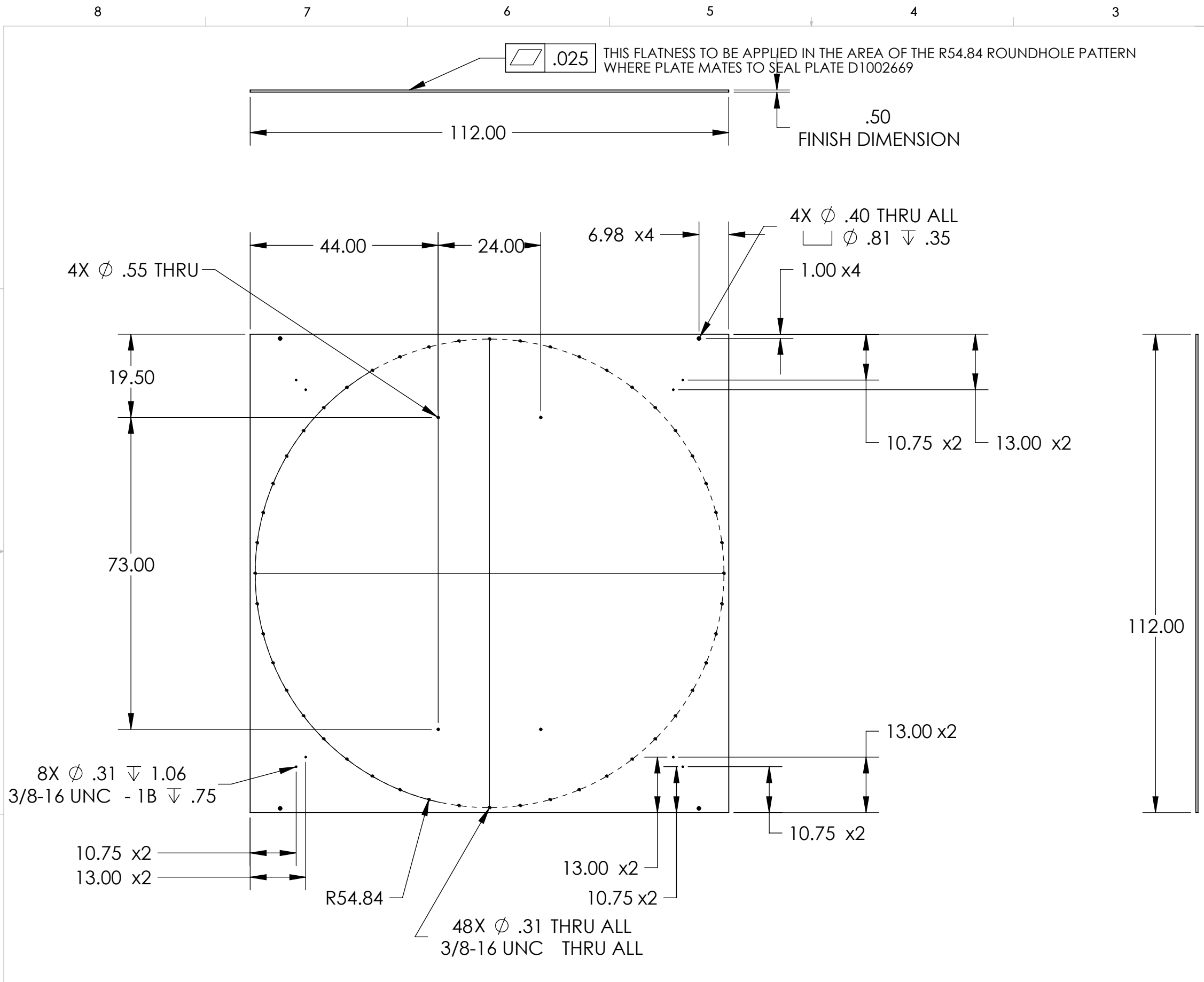


PLATE CAN BE TWO PIECES WELDED INTO ONE. TOP SURFACE MUST BE SMOOTH AND FLAT IN MOUNTING AND SEAL AREA.

NOTES AND TOLERANCES: (UNLESS OTHERWISE SPECIFIED)	
DIMENSIONS ARE IN inches	
TOLERANCES: .XX \pm .01 .XXX \pm .004 ANGULAR \pm °	
1. INTERPRET DRAWING PER ASME Y14.5-1994.	2. REMOVE ALL SHARP EDGES AND BURRS.
3. DO NOT SCALE FROM DRAWING.	
4. ALL MACHINING FLUIDS MUST BE FULLY SYNTHETIC, FULLY WATER SOLUBLE AND FREE OF SULFUR, SILICONE, AND CHLORINE.	
MATERIAL	FINISH
6061 Alloy	- μ inch

CALIFORNIA INSTITUTE OF TECHNOLOGY MASSACHUSETTS INSTITUTE OF TECHNOLOGY		PART NAME	
SYSTEM		SUB-SYSTEM	
DESIGNER	Foley	12/15/2010	SIZE DWG. NO.
DRAFTER			B D1002674
CHECKER			REV. v1
APPROVAL			SCALE: 1:24 PROJECTION: SHEET 1 OF 1
NEXT ASSY		D1002682	