

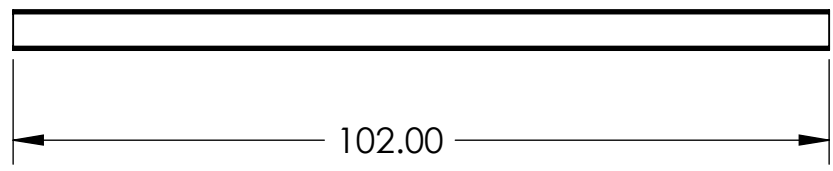
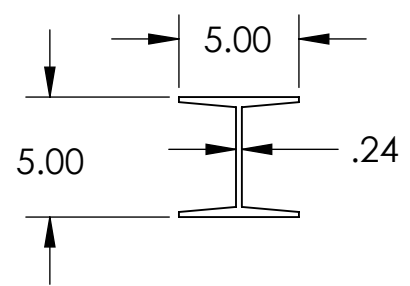
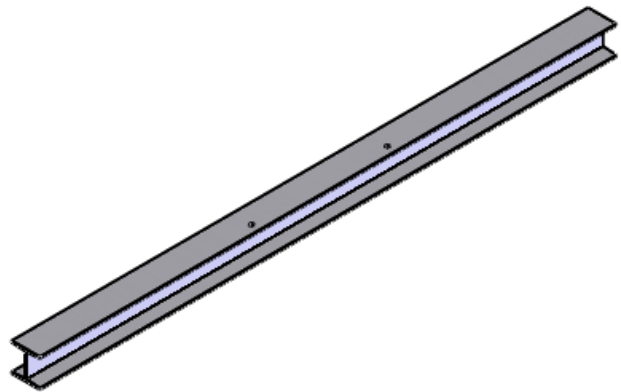
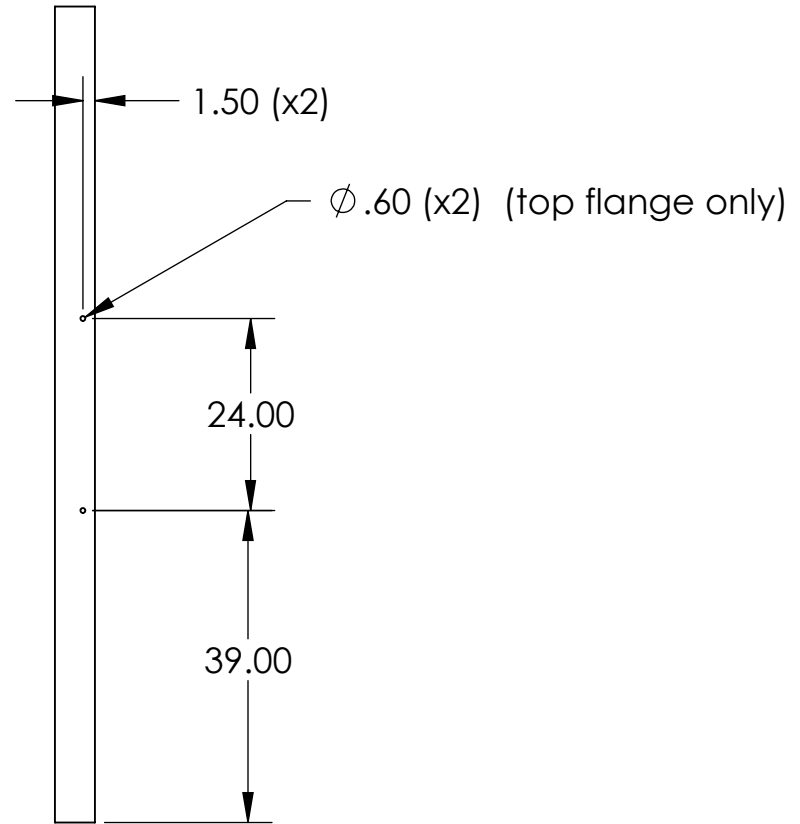
8 7 6 5 4 3 2 1

NOTES CONTINUED:
 4. Purchase Standard I beam W-shape (structural wide flange)
 ASTM A-36 I beam or equivalent

REV.	DATE	DCN #	DRAWING TREE #
-	-	-	-
-	-	-	-
-	-	-	-

D
C
B
A

D
C
B
A



D1002673 - base i-beam B, PART PDM REV: A, DRAWING PDM REV:

8 7 6 5 4 3 2 1

NOTES AND TOLERANCES: (UNLESS OTHERWISE SPECIFIED)				LIGO CALIFORNIA INSTITUTE OF TECHNOLOGY MASSACHUSETTS INSTITUTE OF TECHNOLOGY		PART NAME	
DIMENSIONS ARE IN inches		1. INTERPRET DRAWING PER ASME Y14.5-1994. 2. Remove all burrs and sharp edges. 3. DO NOT SCALE FROM DRAWING.		SYSTEM	SUB-SYSTEM	DESIGNER	Foley
TOLERANCES: .XX ± .05 .XXX ±		MATERIAL Plain Carbon Steel		NEXT ASSY D1002682		DRAPER	12/14/2010
ANGULAR ± °		FINISH - μinch		SCALE: 1:24		CHECKER	PROJECTION:
				DWG. NO. B D1002673		APPROVAL	REV. v1
				SHEET 1 OF 1			