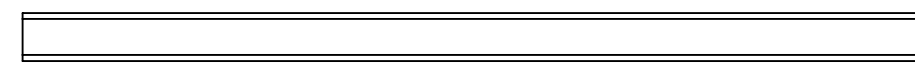
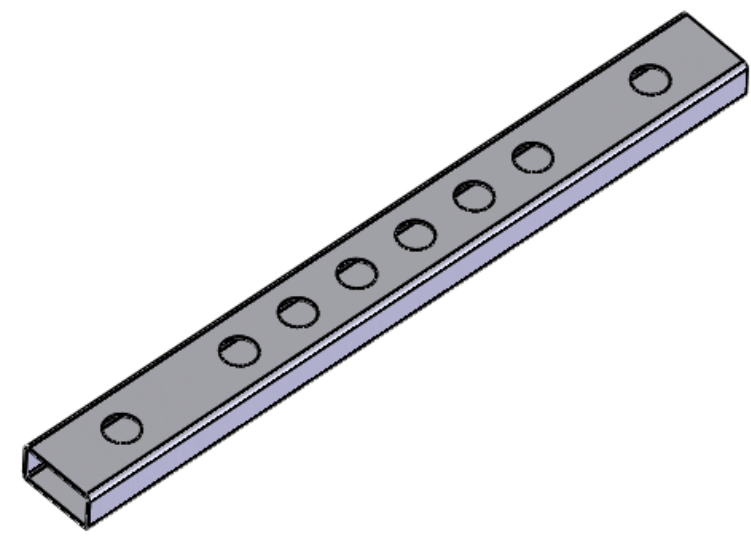
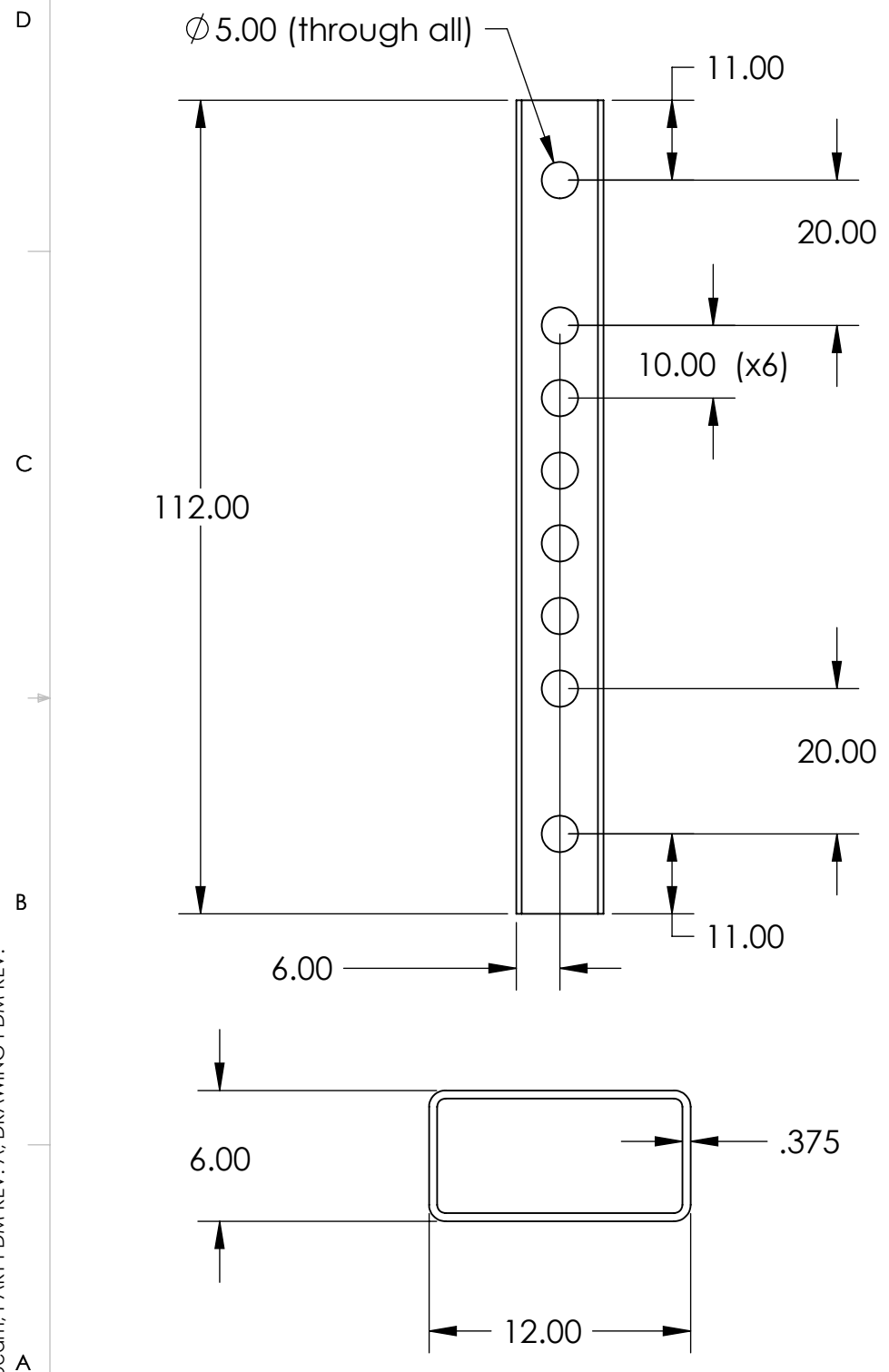


NOTES CONTINUED:
 5. Remove all burrs and sharp edges.
 6. Purchase standard rectangular or fabricated tube ASTM A500 Grade B or equivalent

REV.	DATE	DCN #	DRAWING TREE #
-	-	-	-
-	-	-	-
-	-	-	-



D1002671 - rectangular beam, PART PDM REV: A, DRAWING PDM REV:

NOTES AND TOLERANCES: (UNLESS OTHERWISE SPECIFIED)				LIGO CALIFORNIA INSTITUTE OF TECHNOLOGY MASSACHUSETTS INSTITUTE OF TECHNOLOGY		PART NAME	
DIMENSIONS ARE IN inches TOLERANCES: .XX ± .10 .XXX ± .100 ANGULAR ± °				1. INTERPRET DRAWING PER ASME Y14.5-1994. 2. REMOVE ALL SHARP EDGES, R.02 MIN. 3. DO NOT SCALE FROM DRAWING. 4. ALL MACHINING FLUIDS MUST BE FULLY SYNTHETIC, FULLY WATER SOLUBLE AND FREE OF SULFUR, SILICONE, AND CHLORINE.		rectangular beam	
						DESIGNER	Foley
MATERIAL Plain Carbon Steel				FINISH - μinch		B D1002671 v2	
NEXT ASSY D1002682				DESIGNER		SCALE: PROJECTION:	
				DRAFTER		SHEET 1 OF 1	
				CHECKER			
				APPROVAL			