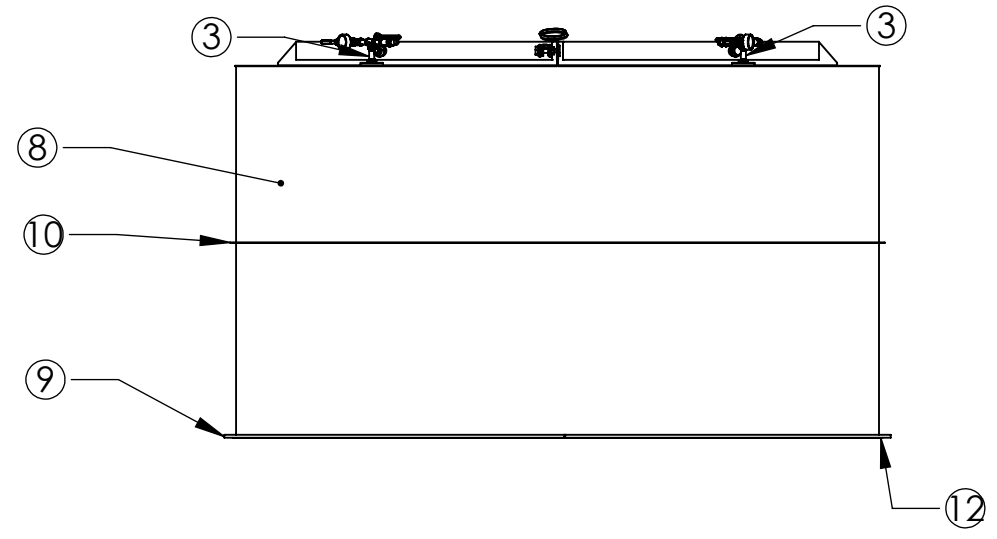
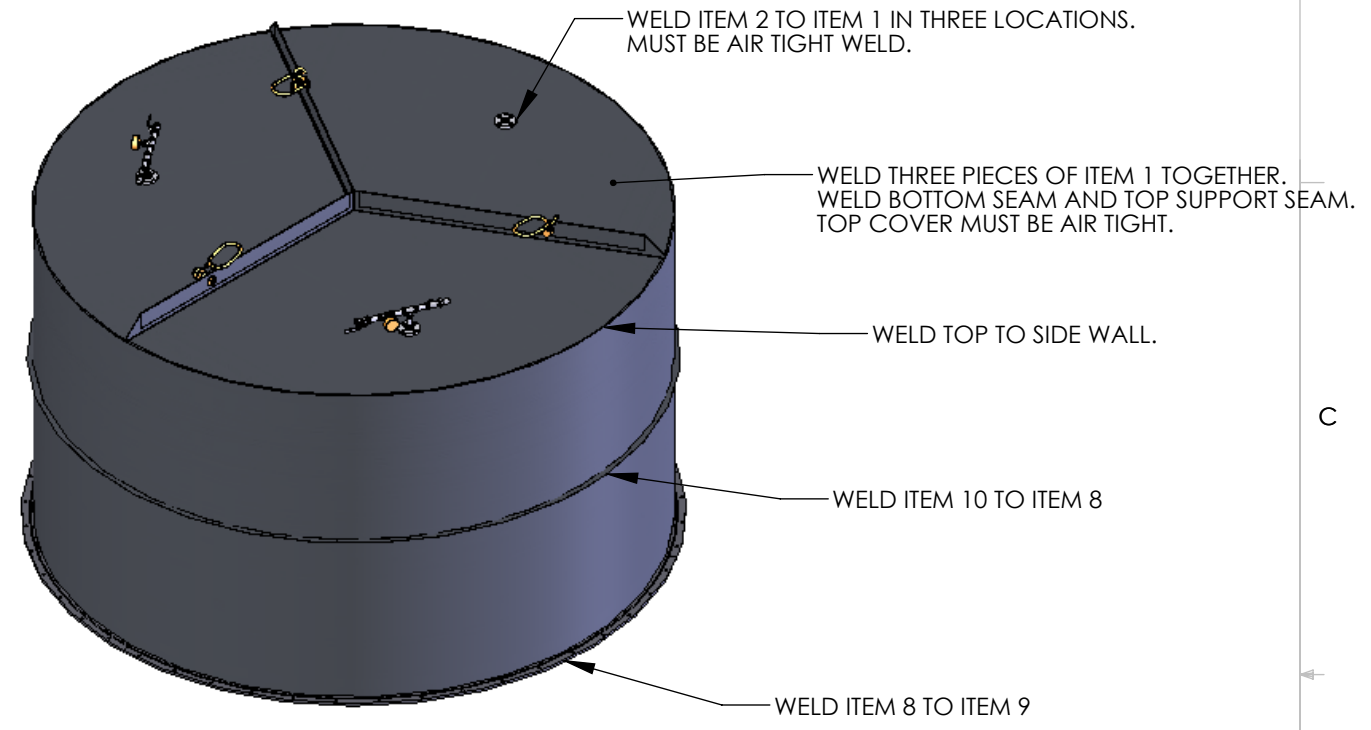
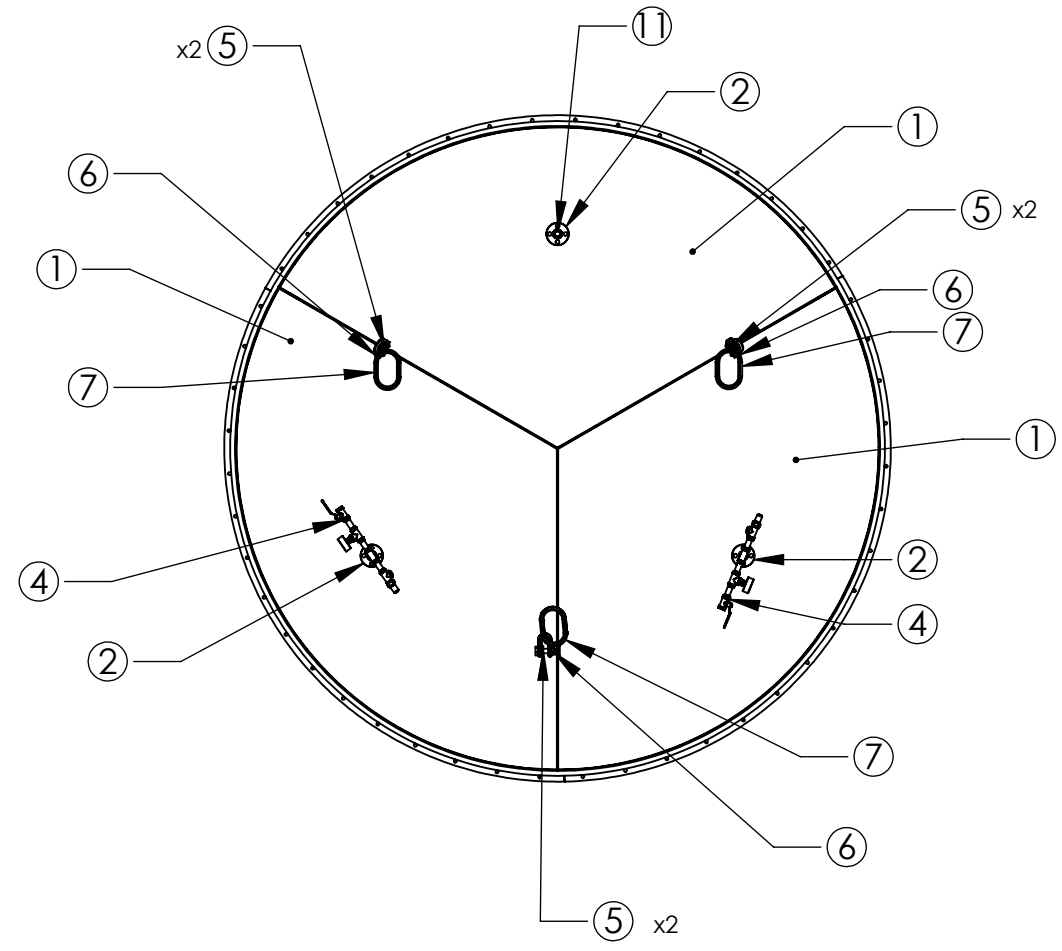


REV.	DATE	DCN #	DRAWING TREE #
-	-	-	-
-	-	-	-
-	-	-	-



ITEM NO.	PART NUMBER	DESCRIPTION	MATERIAL	Defa ult/R EQ	SPARE	TOTAL
12	D1002667	ORING 3/8	VITON		1	1
11	MCMaster 4464K334	PLUG	SS		1	1
10	D1002666	SHEET METAL WALL RING	AISI 304		1	1
9	D1002669	SEAL PLATE (FLANGE)	AISI 304		1	1
8	D1002664	WALL	AISI 304		1	1
7	MCMaster 3199T11	RING	Material <not specified>		3	3
6	MCMaster 3556T15	SHACKLES	-		3	3
5	MCMaster 98125A037	WASHER	Material <not specified>		6	6
4	D1002668	VALVE ASSEMBLY			2	2
3	MCMaster 4830K175	NIPPLE 1/2" NPT X 3" L SS			2	2
2	MCMaster 7977K11	PIPE FITTING 1/2" SS			3	3
1	D1002665	TOP PLATE	AISI 304		3	3

NOTES AND TOLERANCES: (UNLESS OTHERWISE SPECIFIED)

TOP COVER MUST BE AIR TIGHT

MATERIAL SEE BOM FINISH - μinch NEXT ASSY D1002663



PART NAME		COVER ASSEMBLY			
DESIGNER	FOLEY	12/15/2010	SIZE	DWG. NO.	REV.
DRAFTER			B	D1002670	V1
CHECKER			SCALE: 1:48	PROJECTION:	SHEET 1 OF 1
APPROVAL					

D1002670- cover assembly, PART PDM REV: A, DRAWING PDM REV: