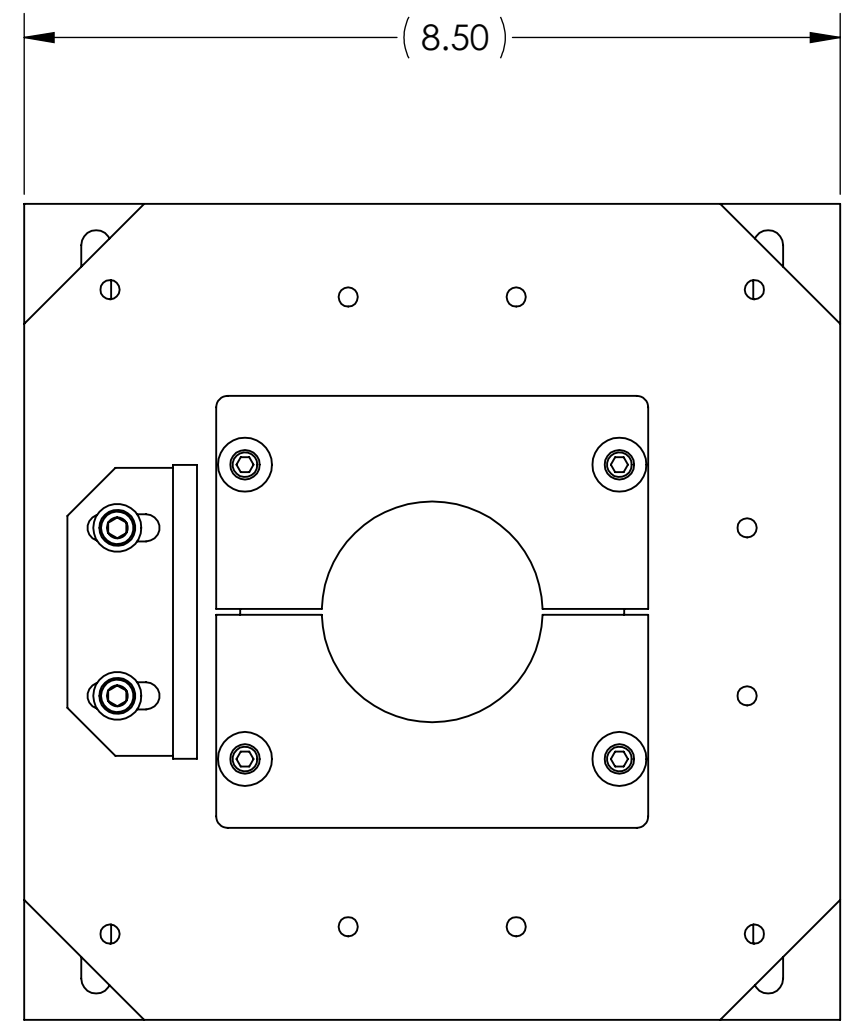
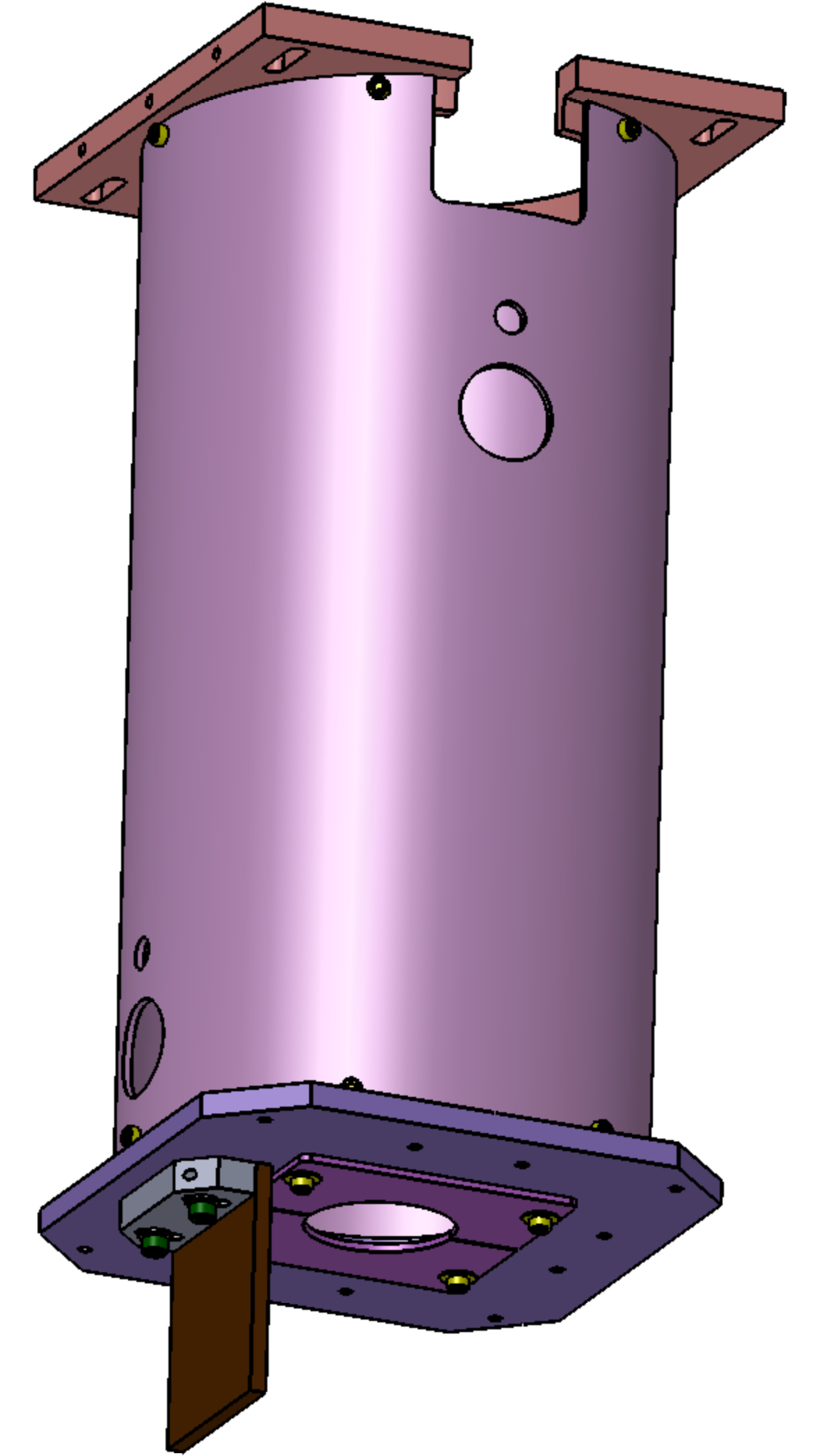
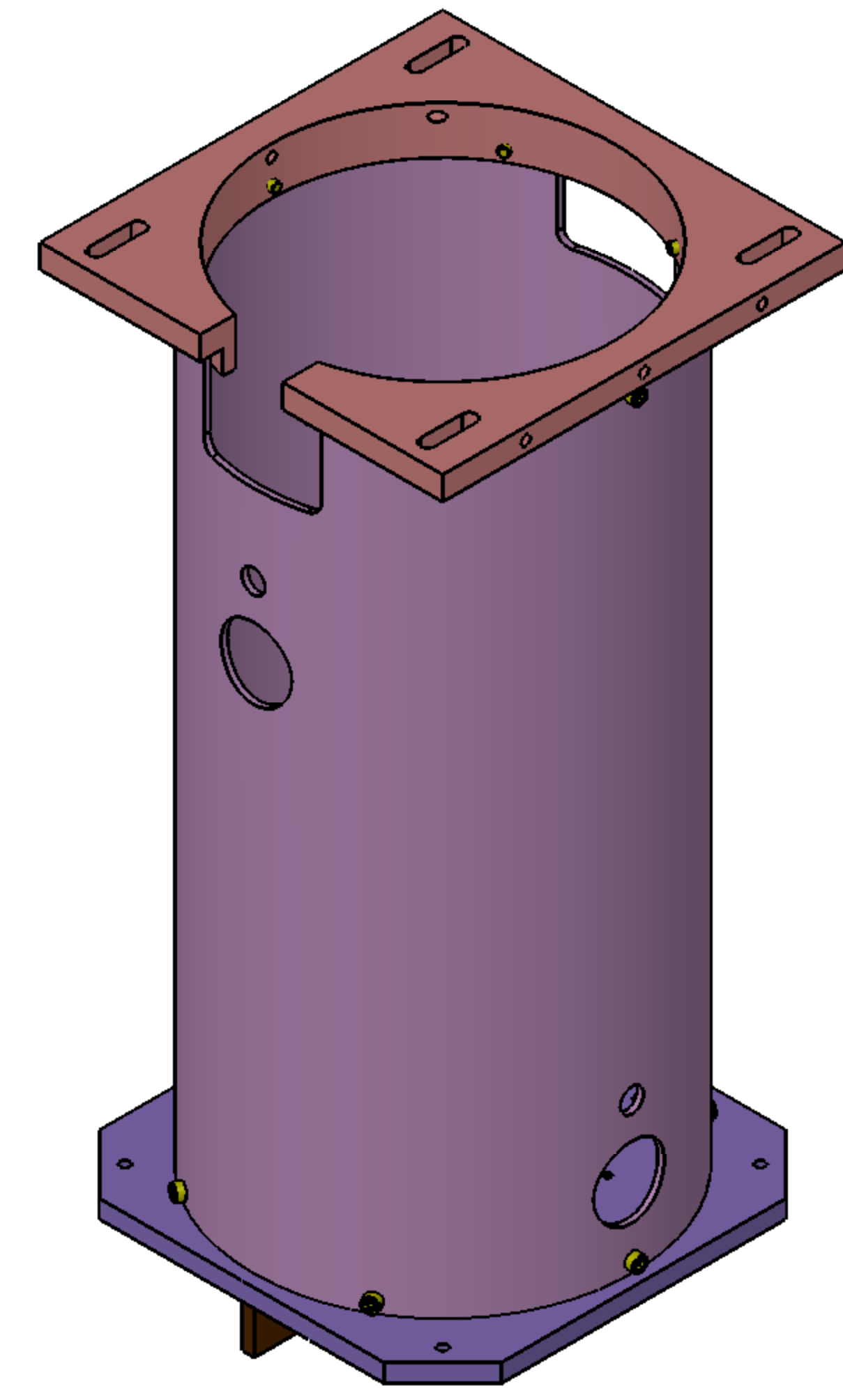
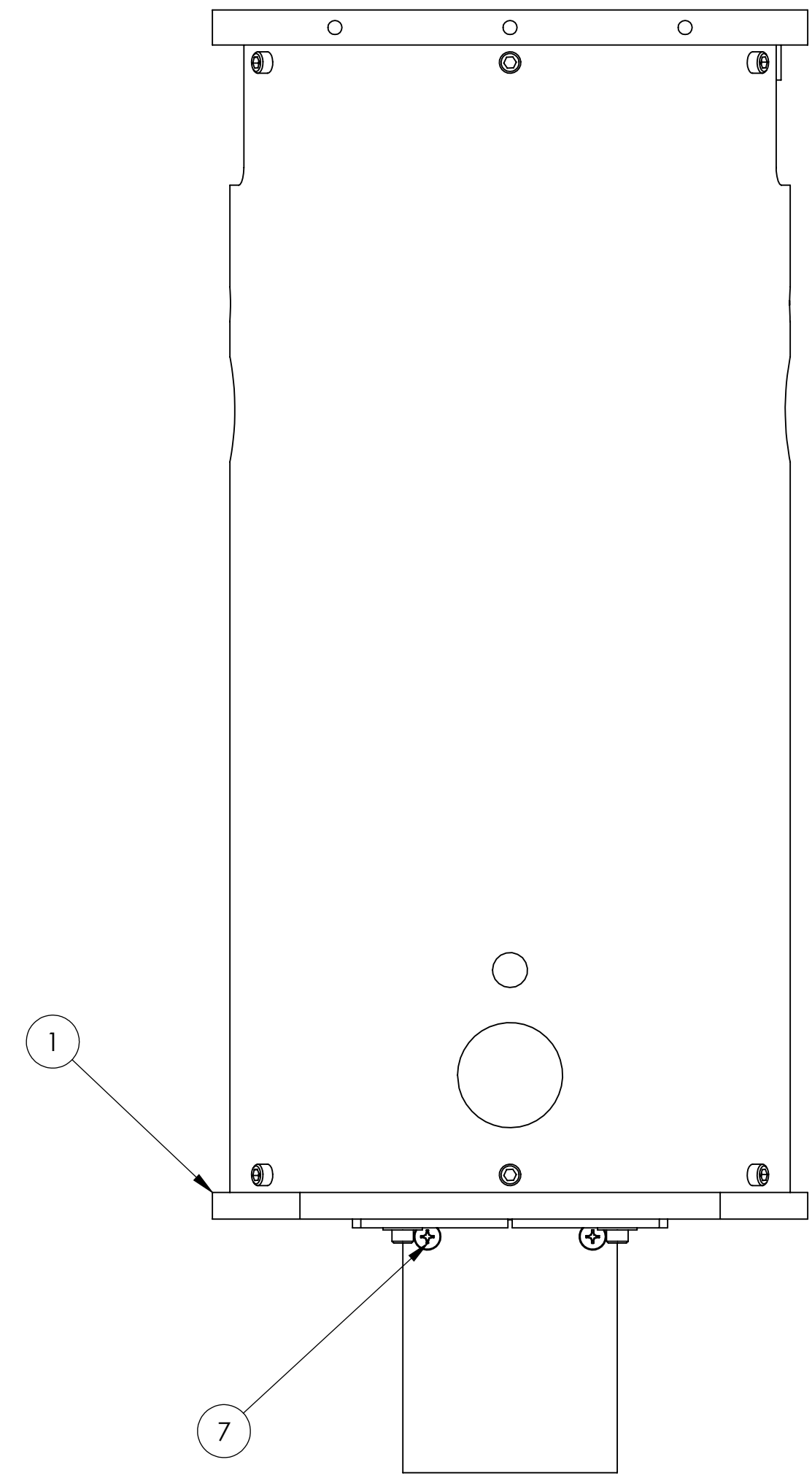
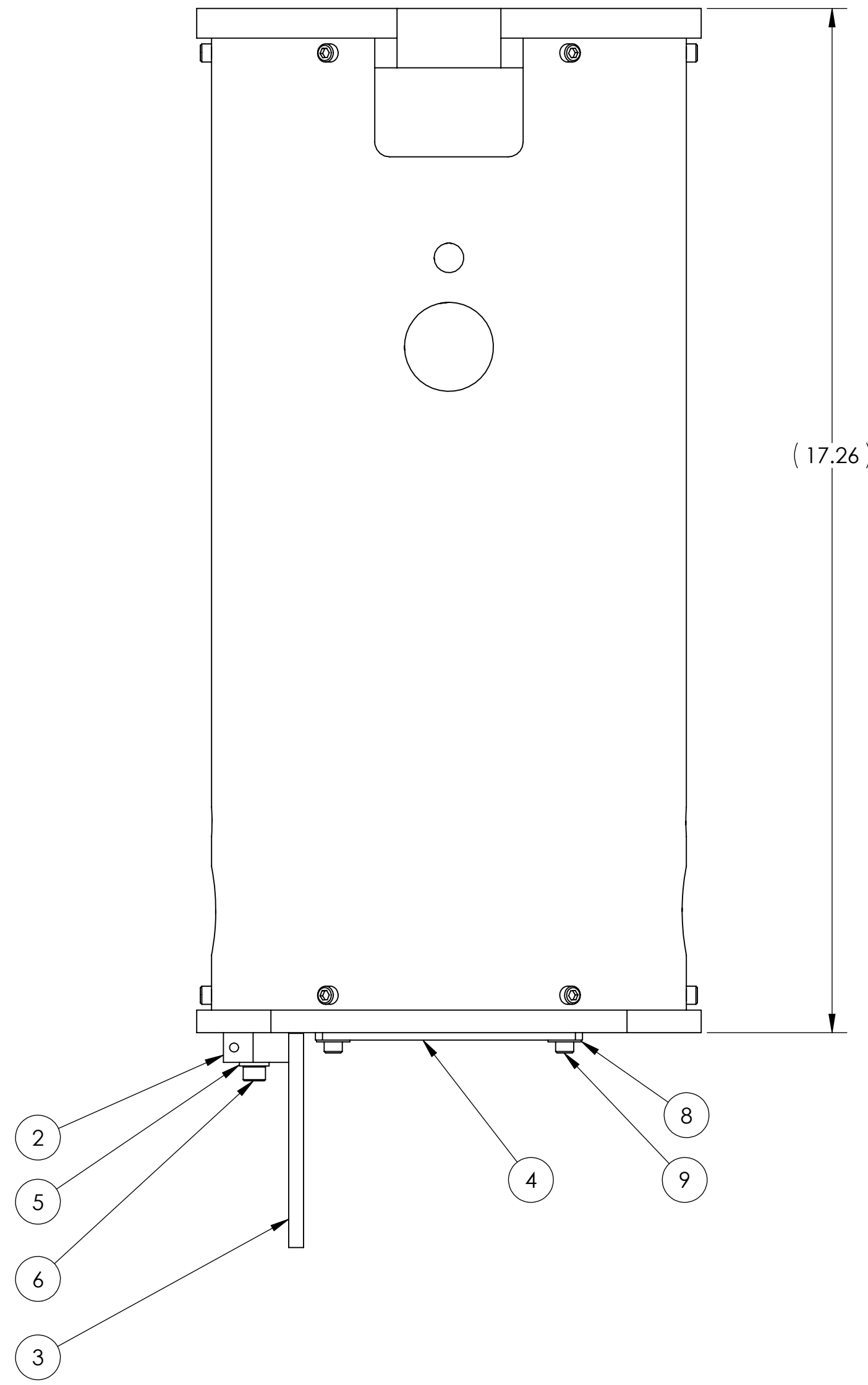


REV.	DATE	DCN #	DRAWING TREE #
v1	4 APR 2011	E1100216	E1000653
-	-	-	-
-	-	-	-



NOTES AND TOLERANCES: (UNLESS OTHERWISE SPECIFIED)

- INTERPRET DRAWING PER ASME Y14.5-1994.
- REMOVE ALL SHARP EDGES, R.02 MIN.
- DO NOT SCALE FROM DRAWING.
- ALL MACHINING FLUIDS MUST BE FULLY SYNTHETIC, FULLY WATER SOLUBLE AND FREE OF SULFUR, SILICONE, AND CHLORINE.

DIMENSIONS ARE IN INCHES

TOLERANCES:
 .XX ±
 .XXX ±

ANGULAR ± °

MATERIAL	N/A	FINISH	N/A
----------	-----	--------	-----

LIGO CALIFORNIA INSTITUTE OF TECHNOLOGY
 MASSACHUSETTS INSTITUTE OF TECHNOLOGY

SYSTEM: **ADVANCED LIGO** SUB-SYSTEM: **AOS**

NEXT ASSY: **D1001011**

ITEM NO.	PART NUMBER	DESCRIPTION	MATERIAL	REQ	SPARE	TOTAL
9	92200A242	SCREW, SOCKET HEAD CAP, #10-24 UNC-2A X 0.5 LONG, McMASTER MIL 16995	300 SSSL	4	2	6
8	92217A445	McMASTER, WASHER, FLAT #10, .203 ID X .563 OD X .03 THK, 18-8 SSSL	18-8 SSSL	4		4
7	90233A815	FLAT HD SCREW # 10-24 X .50, McMASTER	TITANIUM	2	1	3
6	95435A755	SCREW SHCS #.25-20 X .75, McMASTER	TITANIUM	2	1	3
5	93286A044	WASHER #25 ALUM, McMASTER	6061-T6	2	1	3
4	D1001120	SLC EARTHQUAKE STOP RING	6061-T6 Al	2		2
3	D1000909	SLC COPPER PLATE	COPPER	1		1
2	D1000929	SLC COPPER SUPPORT PLATE	6061-T6 Al	1		1
1	D1002563	SLC DAMPING 8 DIA TUBE ASSEMBLY	N/A	1		1

PART NAME
SLC EDDY CURRENT DAMPING 8 DIA TUBE ASSY

DESIGNER	N.Nguyen	01 Jun 2010	SIZE	DWG. NO.	REV.
DRAFTER	N.Nguyen	24 AUG 2010	D	D1002564	v1
CHECKER	M. Smith	01 NOV 2010	SCALE: 1:1	PROJECTION:	SHEET 1 OF 1
APPROVAL	D. Coyne	10 NOV 2010			

D1002564_AudiGO_AOS_SLC Eddy Current Damping 8 Dia Tube Assy, PART PDM REV: X-022, DRAWING PDM REV: X-008