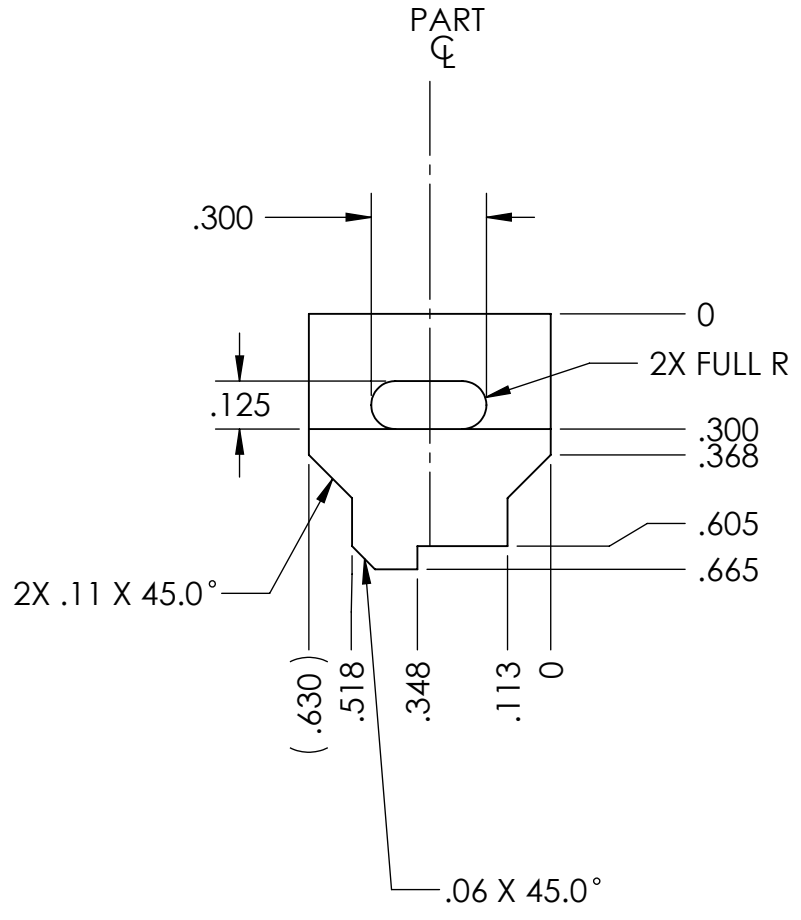
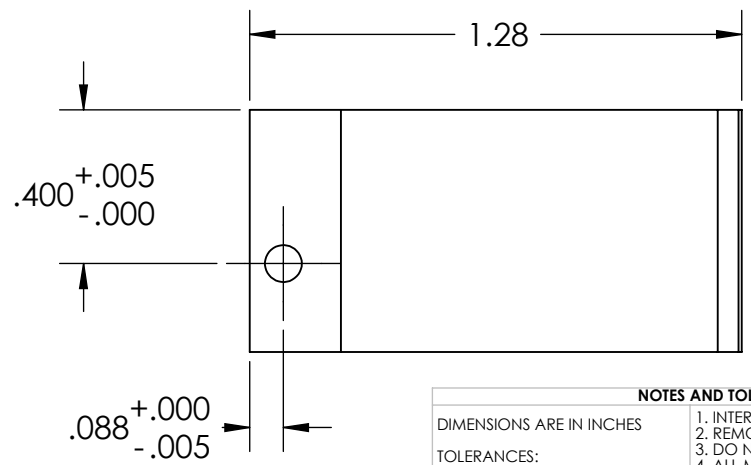
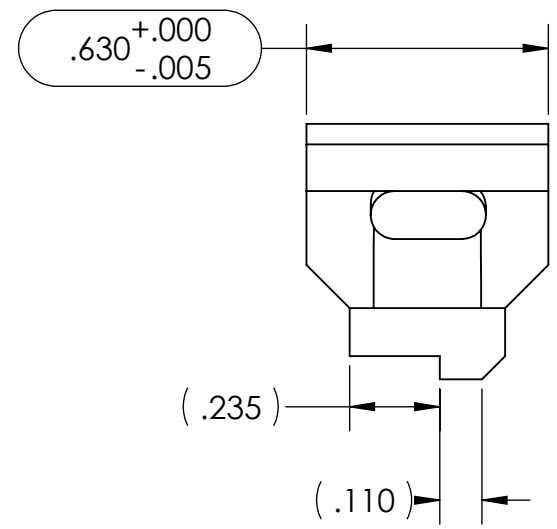
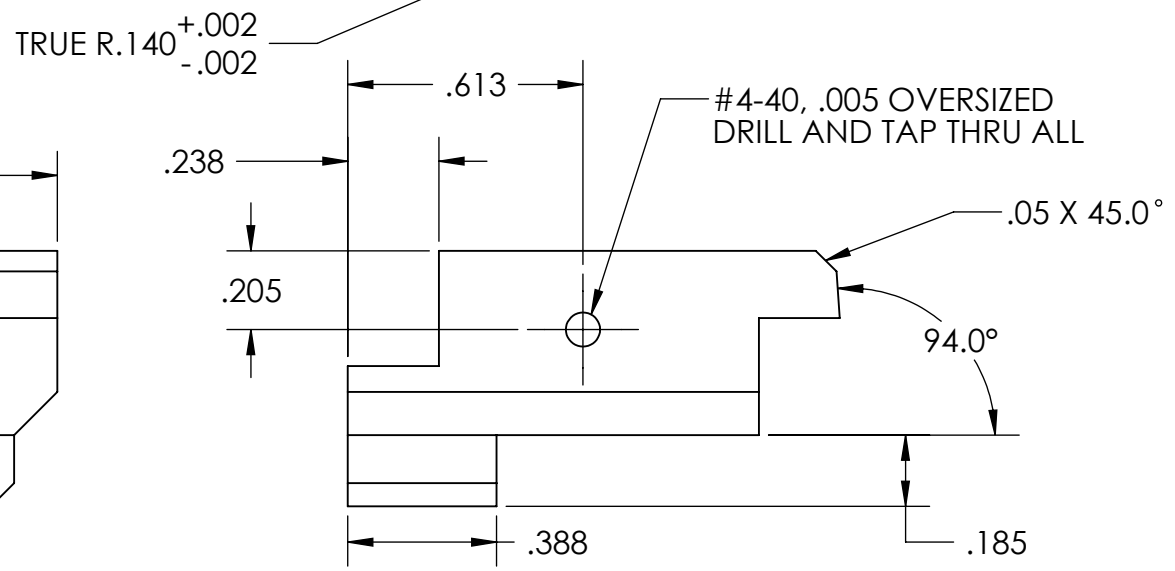
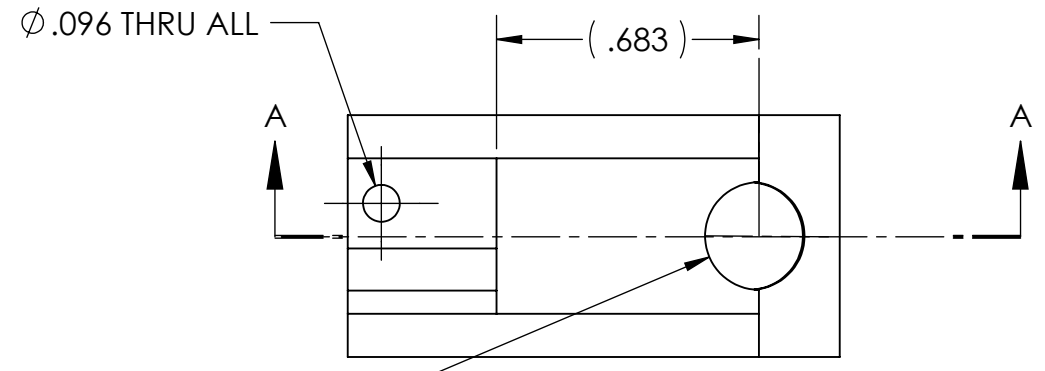
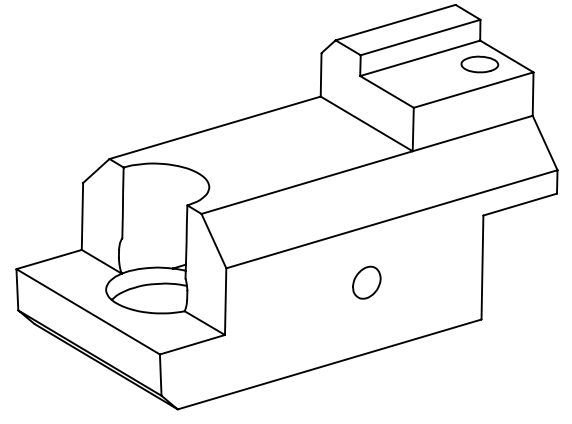
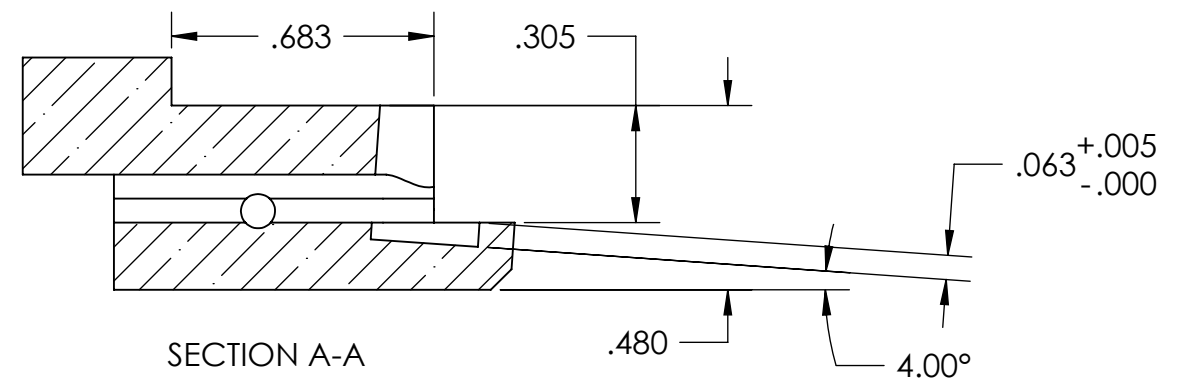


NOTES CONTINUED:
 5. SCRIBE, ENGRAVE, OR MECHANICALLY STAMP (NO DYES OR INKS) A UNIQUE THREE DIGIT SERIAL NUMBER & REVISION NUMBER ON EACH PART. SERIAL NUMBERS START AT 001 FOR THE FIRST ARTICLE AND PROCEED CONSECUTIVELY. BAG AND TAG PARTS WITH THEIR DRAWING PART NUMBER, REVISION, VARIANT OR "TYPE" (IF APPLICABLE), AND QUANTITY. IF PARTS ARE TOO SMALL TO SCRIBE, BAGGING AND TAGGING ALONE IS SUFFICIENT.
 EXAMPLE (PART): 001-v1
 EXAMPLE (TAG): DXXXXXX-VY, TYPE-XX, QTY: TBD

- 6. APPROXIMATE WEIGHT = 0.03 LB.
- 7. MACHINE ALL SURFACES TO REMOVE OXIDES AND MILL FINISH. USE OF ABRASIVE REMOVAL TECHNIQUES IS NOT ALLOWED.
- 8. ALL PARTS SHALL BE MANUFACTURED IN ACCORDANCE WITH LIGO SPECIFICATION E0900364.

REV.	DATE	DCN #	DRAWING TREE #
v1	13-OCT-2010		
v2	08-NOV-2010	E1000291-v3	E1000295-v4



NOTES AND TOLERANCES: (UNLESS OTHERWISE SPECIFIED)

- INTERPRET DRAWING PER ASME Y14.5-1994.
- REMOVE ALL SHARP EDGES, R.02 MAX.
- DO NOT SCALE FROM DRAWING.
- ALL MACHINING FLUIDS MUST BE FULLY SYNTHETIC, FULLY WATER SOLUBLE AND FREE OF SULFUR, SILICONE, AND CHLORINE.

DIMENSIONS ARE IN INCHES

TOLERANCES:
 .XX ± .01
 .XXX ± .005
 ANGULAR ± 0.1°

MATERIAL: MACOR CERAMIC
 FINISH: 63 μinch

LIGO CALIFORNIA INSTITUTE OF TECHNOLOGY MASSACHUSETTS INSTITUTE OF TECHNOLOGY		PART NAME RH ELEMENT CONNECTOR, SIMPLIFIED RIGHT	
SYSTEM ADVANCED LIGO	SUB-SYSTEM AOS	DESIGNER M. JACOBSON 01 OCT 2010	SIZE DWG. NO. B D1002544
DRAFTER M. JACOBSON 01 OCT 2010	CHECKER A. COLE 01 OCT 2010	APPROVAL P. WILLEMS 01 OCT 2010	REV. v2
NEXT ASSY D1001838, D1001895	SCALE: 2:1	PROJECTION:	SHEET 1 OF 1

D1002544_RH ELEMENT RETAINER, SIMPLIFIED RIGHT, PART PDM REV: X-012, DRAWING PDM REV: X-013