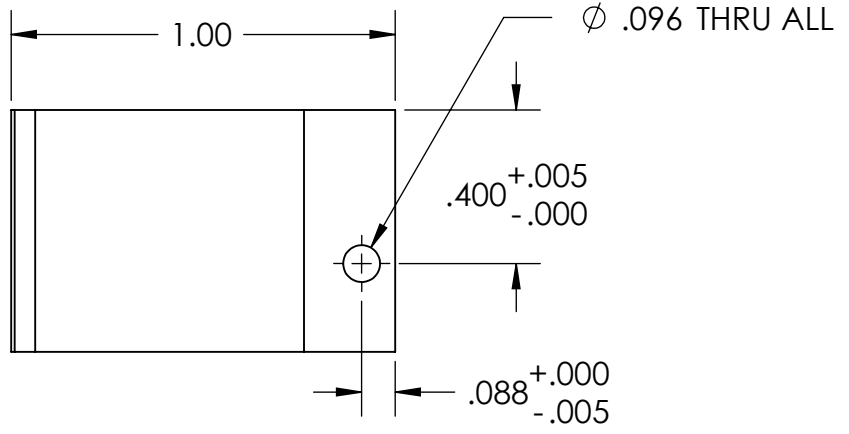
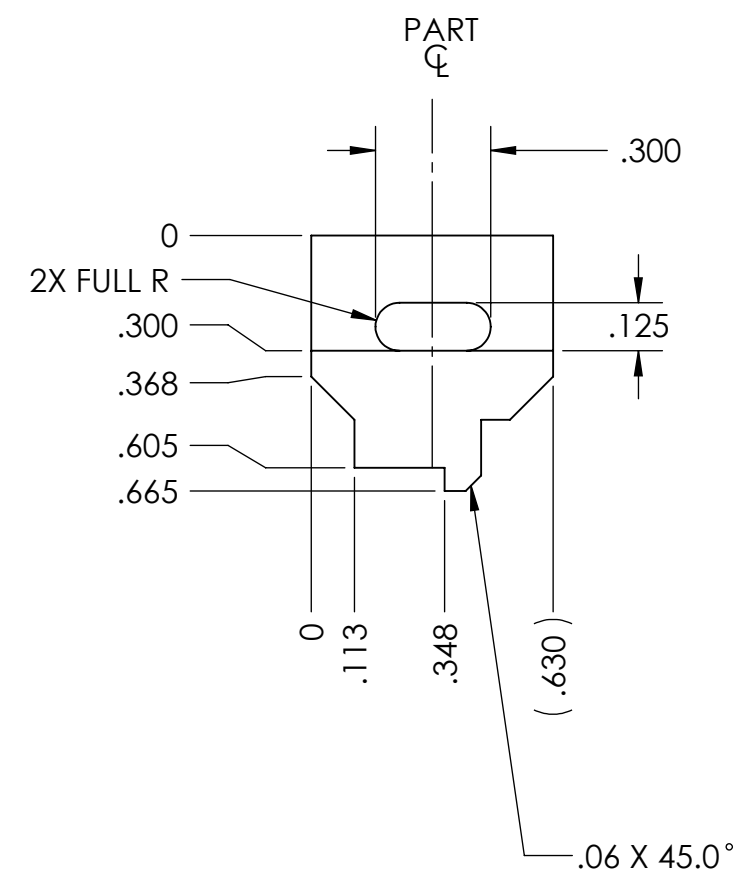
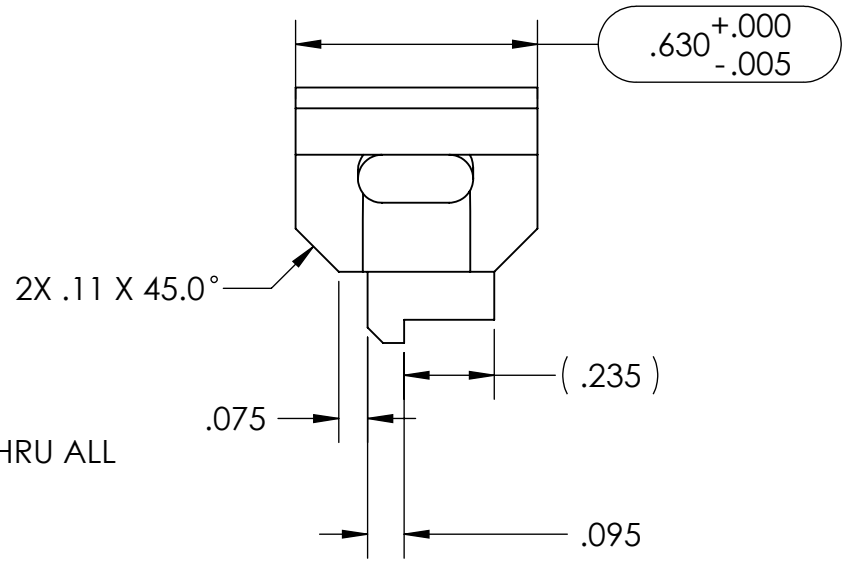
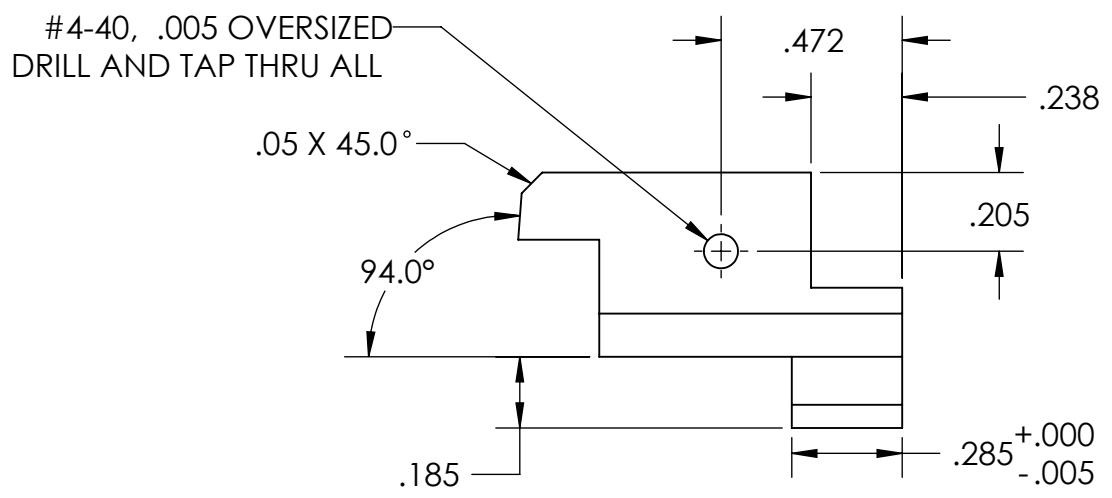
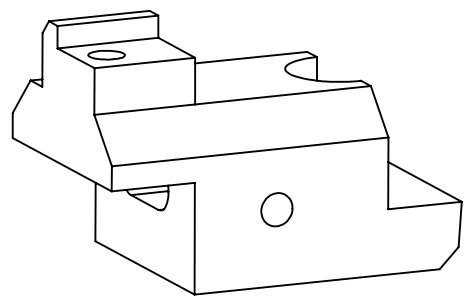
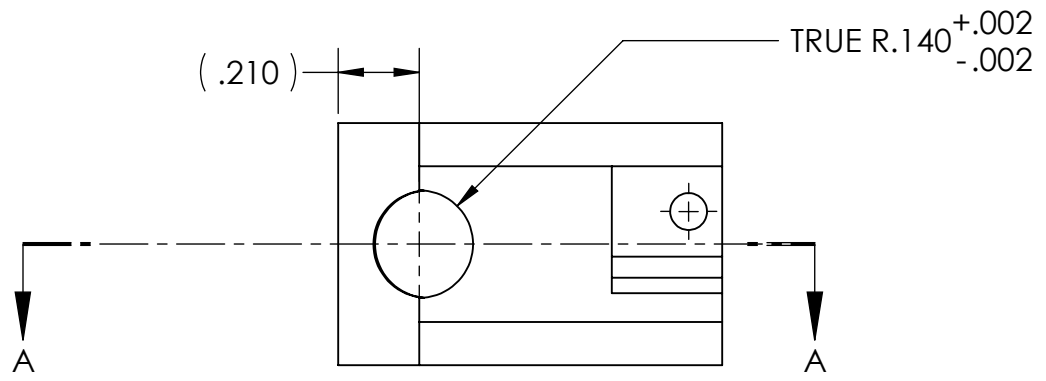
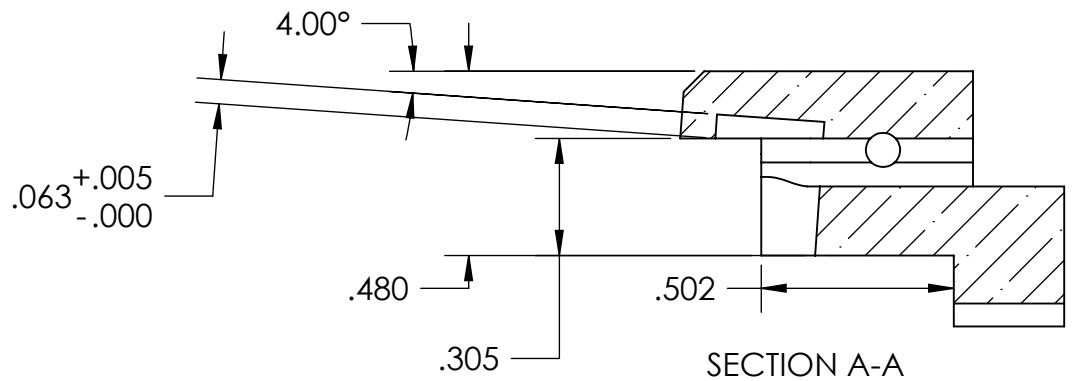


NOTES CONTINUED:
 5. SCRIBE, ENGRAVE, OR MECHANICALLY STAMP (NO DYES OR INKS) A UNIQUE THREE DIGIT SERIAL NUMBER & REVISION NUMBER ON EACH PART. SERIAL NUMBERS START AT 001 FOR THE FIRST ARTICLE AND PROCEED CONSECUTIVELY. BAG AND TAG PARTS WITH THEIR DRAWING PART NUMBER, REVISION, VARIANT OR "TYPE" (IF APPLICABLE), AND QUANTITY. IF PARTS ARE TOO SMALL TO SCRIBE, BAGGING AND TAGGING ALONE IS SUFFICIENT.
 EXAMPLE (PART): 001-v1
 EXAMPLE (TAG): DXXXXXX-VY, TYPE-XX, QTY: TBD

- 6. APPROXIMATE WEIGHT = 0.03 LB.
- 7. MACHINE ALL SURFACES TO REMOVE OXIDES AND MILL FINISH. USE OF ABRASIVE REMOVAL TECHNIQUES IS NOT ALLOWED.
- 8. ALL PARTS SHALL BE MANUFACTURED IN ACCORDANCE WITH LIGO SPECIFICATION E0900364.

REV.	DATE	DCN #	DRAWING TREE #
v1	13-OCT-2010		
v2	06-NOV-2010	E1000291-v3	E1000295-v4
v3	29-NOV-2010	E1000291-v4	E1000295-v5



NOTES AND TOLERANCES: (UNLESS OTHERWISE SPECIFIED)	
DIMENSIONS ARE IN INCHES	
TOLERANCES: .XX ± .01 .XXX ± .005 ANGULAR ± 0.1°	
MATERIAL	FINISH
MACOR CERAMIC	32 μinch

CALIFORNIA INSTITUTE OF TECHNOLOGY MASSACHUSETTS INSTITUTE OF TECHNOLOGY		PART NAME	
ADVANCED LIGO		RH ELEMENT CONNECTOR, SIMPLIFIED LEFT	
DESIGNER	M. JACOBSON 01 OCT 2010	SIZE	DWG. NO.
DRAFTER	M. JACOBSON 01 OCT 2010	B	D1002543
CHECKER	A. COLE 01 OCT 2010	REV.	v3
APPROVAL	P. WILLEMS 01 OCT 2010	SCALE:	2:1
NEXT ASSY		PROJECTION:	SHEET 1 OF 1
D1001838, D1001859			

D1002543_RH ELEMENT RETAINER, SIMPLIFIED LEFT, PART PDM REV: X-013, DRAWING PDM REV: X-021