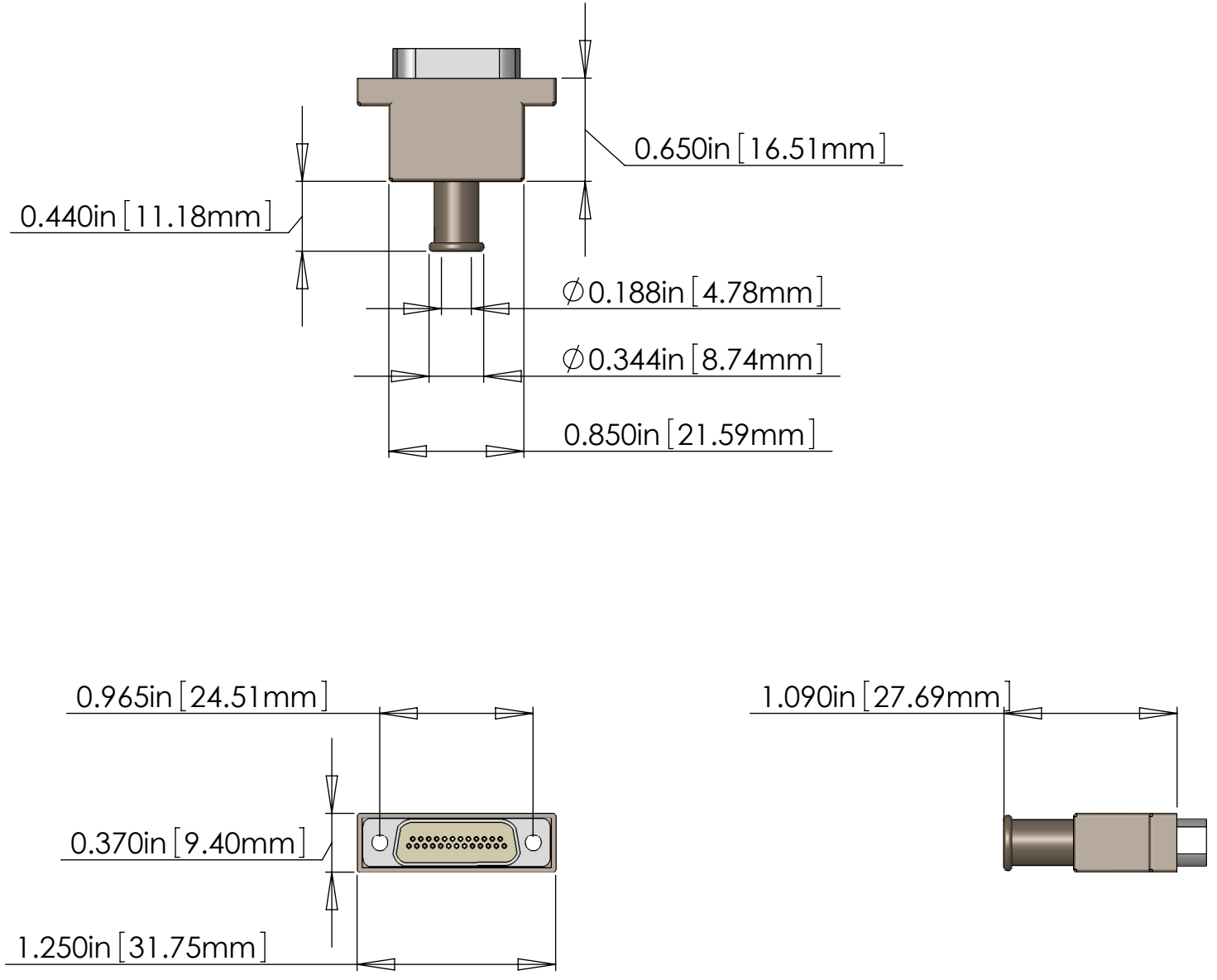
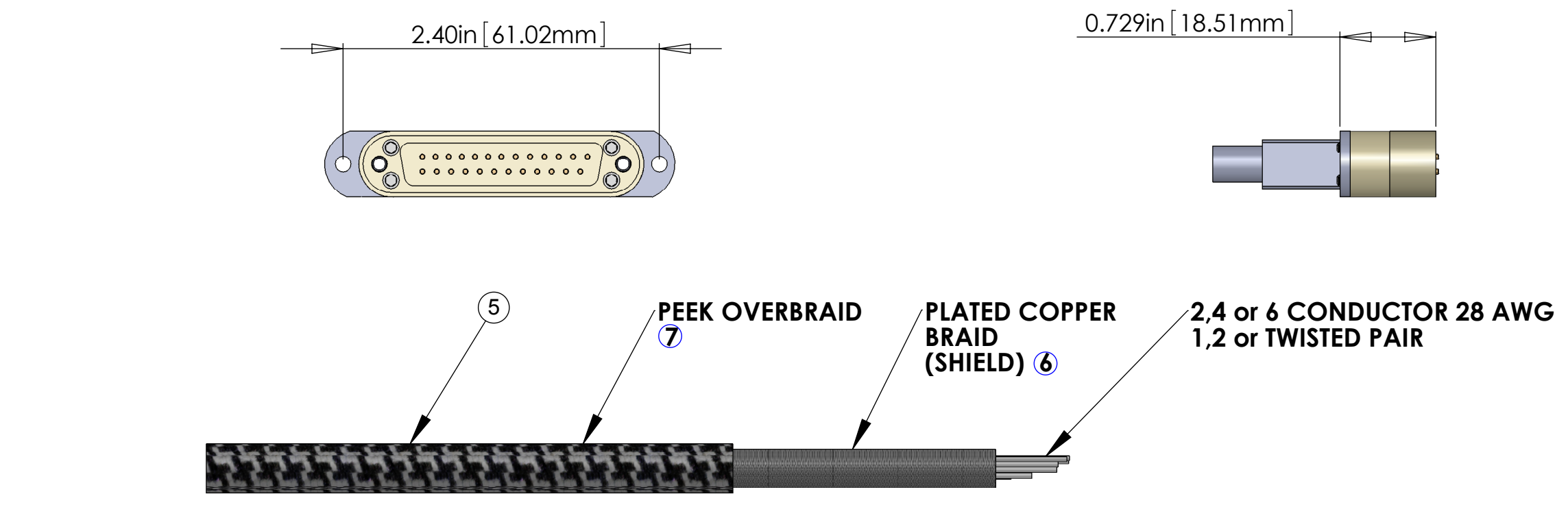
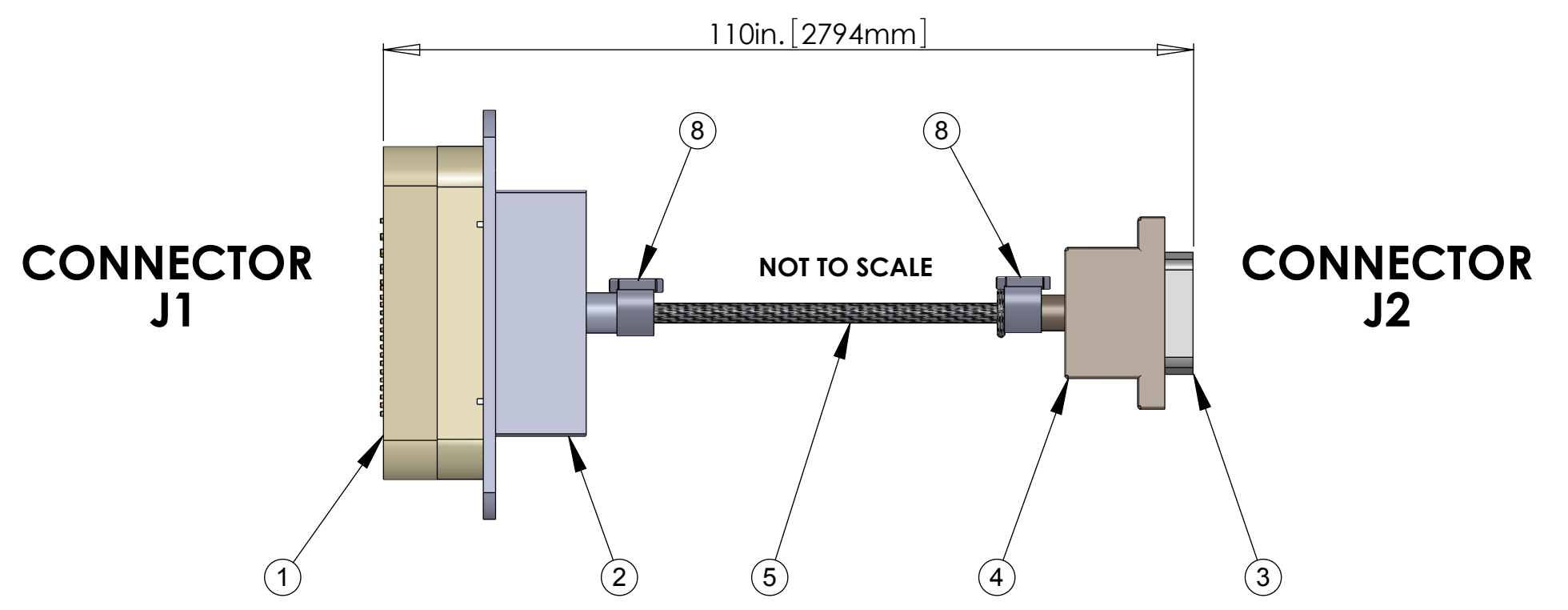
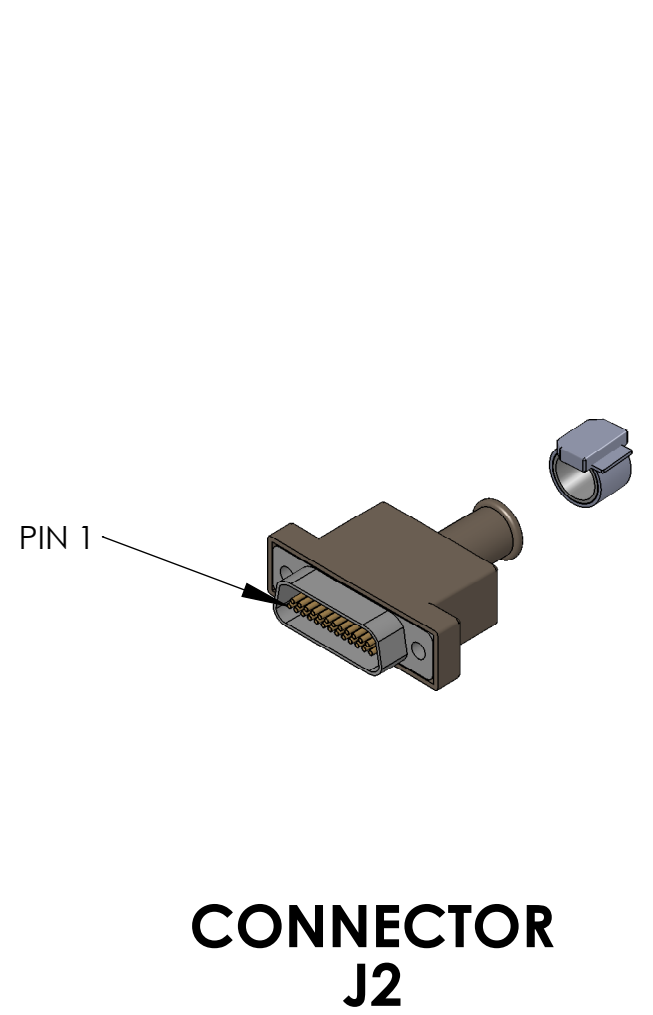
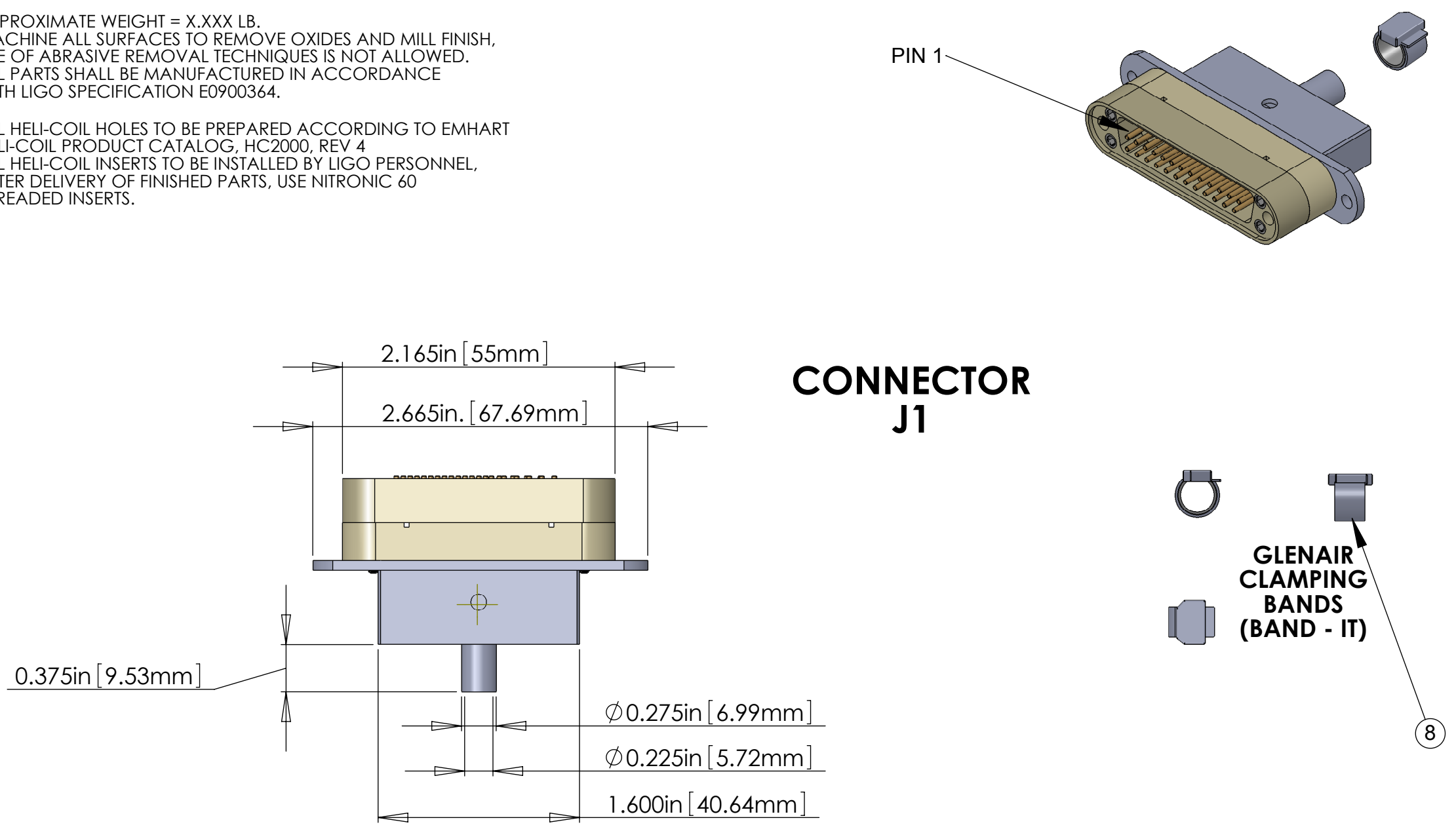


NOTES CONTINUED:  
 5. SCRIBE, ENGRAVE, OR MECHANICALLY STAMP (NO INKS OR DYES) DRAWING PART NUMBER AND REVISION ON NOTED SURFACE FOLLOWED ON THE NEXT LINE BY A THREE DIGIT SERIAL NUMBER. SERIAL NUMBERS START AT 001 FOR THE FIRST ARTICLE AND PROCEED CONSECUTIVELY. USE .07" HIGH CHARACTERS. EXAMPLE: DXXXXX-VY, S/N 001. VIBRATORY TOOL MAY BE USED.

6. APPROXIMATE WEIGHT = X.XXX LB.  
 7. MACHINE ALL SURFACES TO REMOVE OXIDES AND MILL FINISH. USE OF ABRASIVE REMOVAL TECHNIQUES IS NOT ALLOWED.  
 8. ALL PARTS SHALL BE MANUFACTURED IN ACCORDANCE WITH LIGO SPECIFICATION E0900364.  
 9. ALL HELI-COIL HOLES TO BE PREPARED ACCORDING TO EMHART HELI-COIL PRODUCT CATALOG, HC2000, REV 4  
 10. ALL HELI-COIL INSERTS TO BE INSTALLED BY LIGO PERSONNEL AFTER DELIVERY OF FINISHED PARTS. USE NITRONIC 60 THREADED INSERTS.

REV.	DATE	DCN #	DRAWING TREE #



ITEM NO.	PART NUMBER	DESCRIPTION	QTY.	LENGTH
1	TICOR PART # TS0086-1	DB25 MALE CONNECTOR (J1) FOR UHV (PEEK)	1	
2	TICOR PART # TS-0143-1	DB25 CONNECTOR BACKSHELL FOR UHV (STAINLESS)	1	
3	TICOR PART # TS-0143-1	MicroD25 FEMALE CONNECTOR (J2) FOR UHV	1	
4	BACKSHELL (included in PART # TS-0143-1)	MicroD25 CONNECTOR BACKSHELL FOR UHV	1	
5	C1	25 COND. (12 TW PAIR + 1 WIRE + SHIELD) CABLE WITH COPPER BRAID (SHIELD) 6 AND PEEK OVERBRAID 7	1	110in *
6	CONTINENTAL PART #24x4x40BC	COPPER BRAID - CONTINENTAL CORDAGE PART #24x4x40BC	1	
7	PART #6759	PEEK BRAID - PART #6759 MANUFACTURED WITH ZEUS 0.016" BLACK PEEK DRAWN MONOFILAMENT	1	
8	GLENAIR 600-052	GLENAIR 600-052 STANDARD BRAID CLAMP (BAND - IT)	2	

### V25G-110 CABLE ASSEMBLY CIRCUIT SUMMARY V-DB25 M/S1-110-μD25 F/S1

CABLE NAME	COND.- WIRE ID	TWISTED PAIR	LENGTH *	FROM	TO
V25G-110	25 COND. CABLE	(12 TOTAL)	110 in.	Conn. J1	Conn. J2
C1	SHIELD (COPPER BRAID)		110 in.	PIN 1, SHIELD & SHELL	PIN 1, SHIELD & SHELL
	W1	SINGLE WIRE	110 in.	PIN 1, SHIELD & SHELL	PIN 1, SHIELD & SHELL
	W2	TP-1	110 in.	PIN 2	PIN 2
	W14	TP-1	110 in.	PIN 14	PIN 14
	W3	TP-2	110 in.	PIN 3	PIN 3
	W15	TP-2	110 in.	PIN 15	PIN 15
	W4	TP-3	110 in.	PIN 4	PIN 4
	W16	TP-3	110 in.	PIN 16	PIN 16
	W5	TP-4	110 in.	PIN 5	PIN 5
	W17	TP-4	110 in.	PIN 17	PIN 17
	W6	TP-5	110 in.	PIN 6	PIN 6
	W18	TP-5	110 in.	PIN 18	PIN 18
W7	TP-6	110 in.	PIN 7	PIN 7	
W19	TP-6	110 in.	PIN 19	PIN 19	
W8	TP-7	110 in.	PIN 8	PIN 8	
W20	TP-7	110 in.	PIN 20	PIN 20	
W9	TP-8	110 in.	PIN 9	PIN 9	
W21	TP-8	110 in.	PIN 21	PIN 21	
W10	TP-9	110 in.	PIN 10	PIN 10	
W22	TP-9	110 in.	PIN 22	PIN 22	
W11	TP-10	110 in.	PIN 11	PIN 11	
W23	TP-10	110 in.	PIN 23	PIN 23	
W12	TP-11	110 in.	PIN 12	PIN 12	
W24	TP-11	110 in.	PIN 24	PIN 24	
W13	TP-12	110 in.	PIN 13	PIN 13	
W25	TP-12	110 in.	PIN 25	PIN 25	

\* The length shown in this list is the overall length of the cable from connector end to connector end. Change length as necessary to compensate for the internal wiring of the connectors and strip length.

\* NOTE: THE OVERALL LENGTH IS MEASURED FROM PIN TIP (25 PIN D-SUB) TO PIN TIP (25 PIN μD) OF THE CABLE. Use whatever length is necessary for the internal wiring of the connectors and strip length to achieve the correct overall length.

#### NOTES: ( UNLESS OTHERWISE SPECIFIED )

- MATERIAL:**
  - CONNECTOR SHELL - PEEK - VICTREX 450GL30.
  - BACKSHELL - STAINLESS STEEL WITH VENT HOLE.
  - CONTACTS - BERYLLIUM COPPER ALLOY C17300 0.000050 MIN. GOLD OVER NICKEL
  - HARDWARE: CORROSION RESISTANCE STEEL, PASSIVATED
  - PEEK BRAID - PEEK CARBON LOADED

CABLE 25 COND. 29 AWG (51/46), WITH PFA INSULATION COONER WIRE #CZ1104  
 12 TWISTED PAIRS ( 4 TO 5 TWISTS PER INCH ) + 1 WIRE  
 OVERALL 40AWG SILVER PLATED COPPER BRAID 90% COVERAGE  
 OVERALL PEEK BRAID MIN. 50% COVERAGE  
 OVERALL CABLE O.D. WILL BE 0.240 IN.

NOTES AND TOLERANCES: (UNLESS OTHERWISE SPECIFIED)	
DIMENSIONS ARE IN	1. INTERPRET DRAWING PER ASME Y14.5-1994.
TOLERANCES:	2. REMOVE ALL SHARP EDGES, R.02 MIN.
.XX ±	3. DO NOT SCALE FROM DRAWING.
.XXX ±	4. ALL MACHINING FLUIDS MUST BE FULLY SYNTHETIC, FULLY WATER SOLUBLE AND FREE OF SULFUR, SILICONE, AND CHLORINE.
ANGULAR ± °	
MATERIAL	FINISH
	μinch

CALIFORNIA INSTITUTE OF TECHNOLOGY MASSACHUSETTS INSTITUTE OF TECHNOLOGY		PART NAME		CUSTOM CABLE SPECIFICATION V25G-110 V-DB25 M/S1-110-μD25 F/S1	
SYSTEM	SUB-SYSTEM	DESIGNER	J.JEEFNER	AUG/17/2011	SIZE DWG. NO.
	SUS	DRAFTER	E. BROWN	AUG/17/2011	D
NEXT ASSY		CHECKER			LIGO-D1002522-
		APPROVAL			v2
				SCALE: 1:1	PROJECTION:
					SHEET 1 OF 1

D1002522-02.cable V25G-110 PART PDM REV: DRAWING PDM REV: