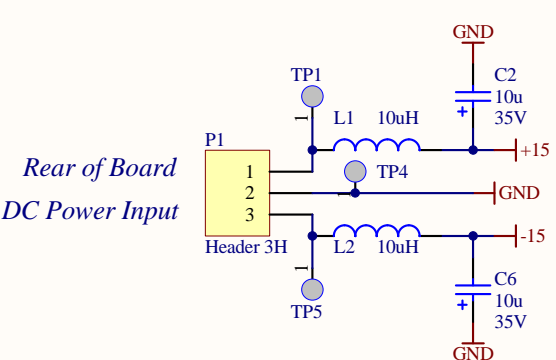
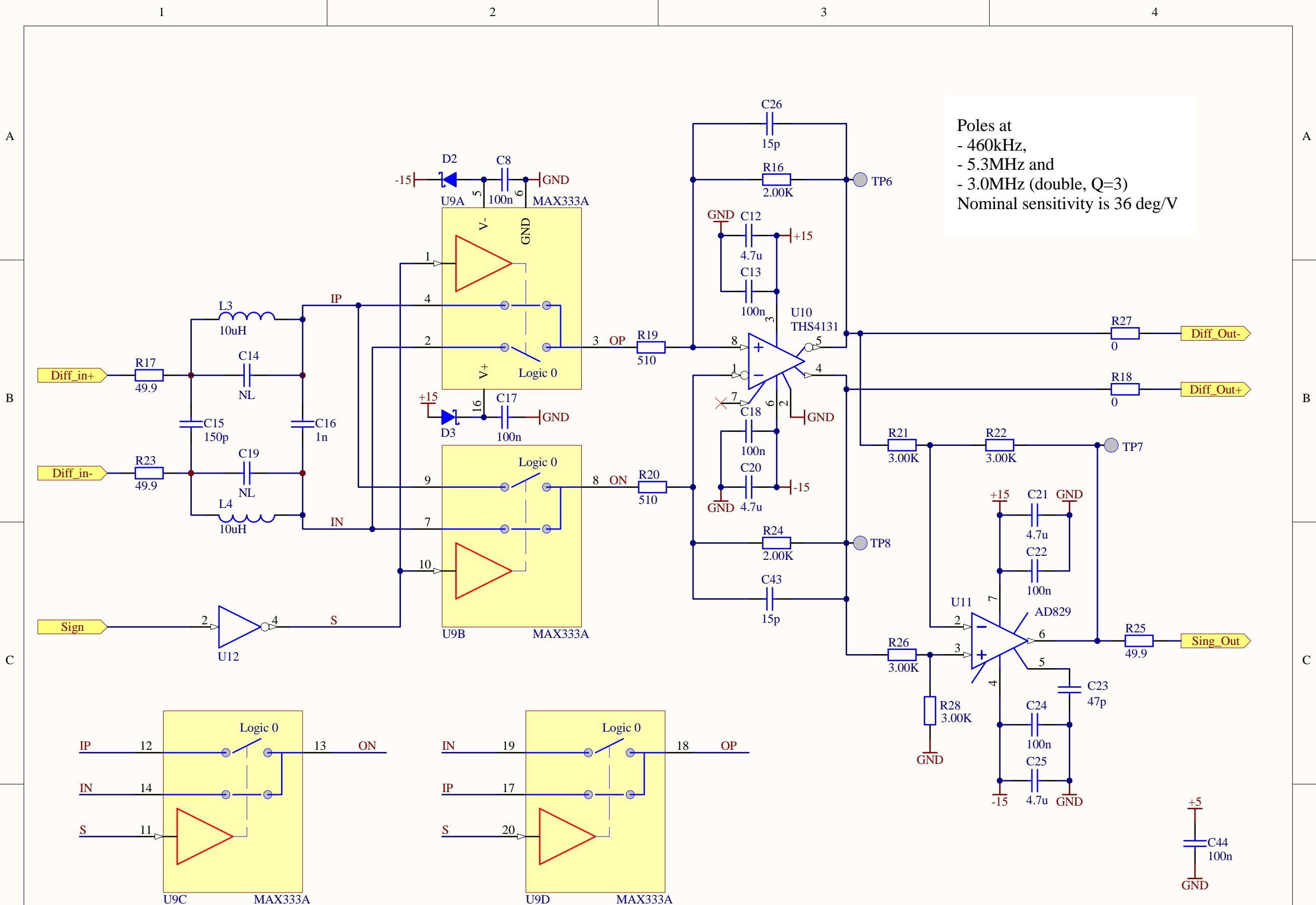


- 7687K-ND grommets used for SMA connectors 1 inside the panel and 1 outside pannel
- J4 Nylon Washer
 - J15 Nylon Washer
 - J16 Nylon Washer
 - J17 Nylon Washer
- SUPPORT FOR PLP-XX LOWPASS FILTER MINIATURE SPRING SOCKETS
- J7 PLP-Socket
 - J8 PLP-Socket
 - J9 PLP-Socket
 - J10 PLP-Socket
 - J11 PLP-Socket
 - J12 PLP-Socket
 - J13 PLP-Socket
 - J14 PLP-Socket




Title Phase Frequency Discriminator		LIGO Laboratory California Institute of Technology Massachusetts Institute of Technology		LIGO	
Size: B	DCC Number: D1002471	Revision: 2	Engineer: Daniel Sigg	Date: 4/14/2011	Time: 12:28:59 PM
File: C:\Users\daniel\Protel\RF\Demodulator\PhaseFreqDiscriminator\PhaseFreqDiscriminator1.SchDoc				Sheet 1 of 3	

Last Edited: 22 January 2010

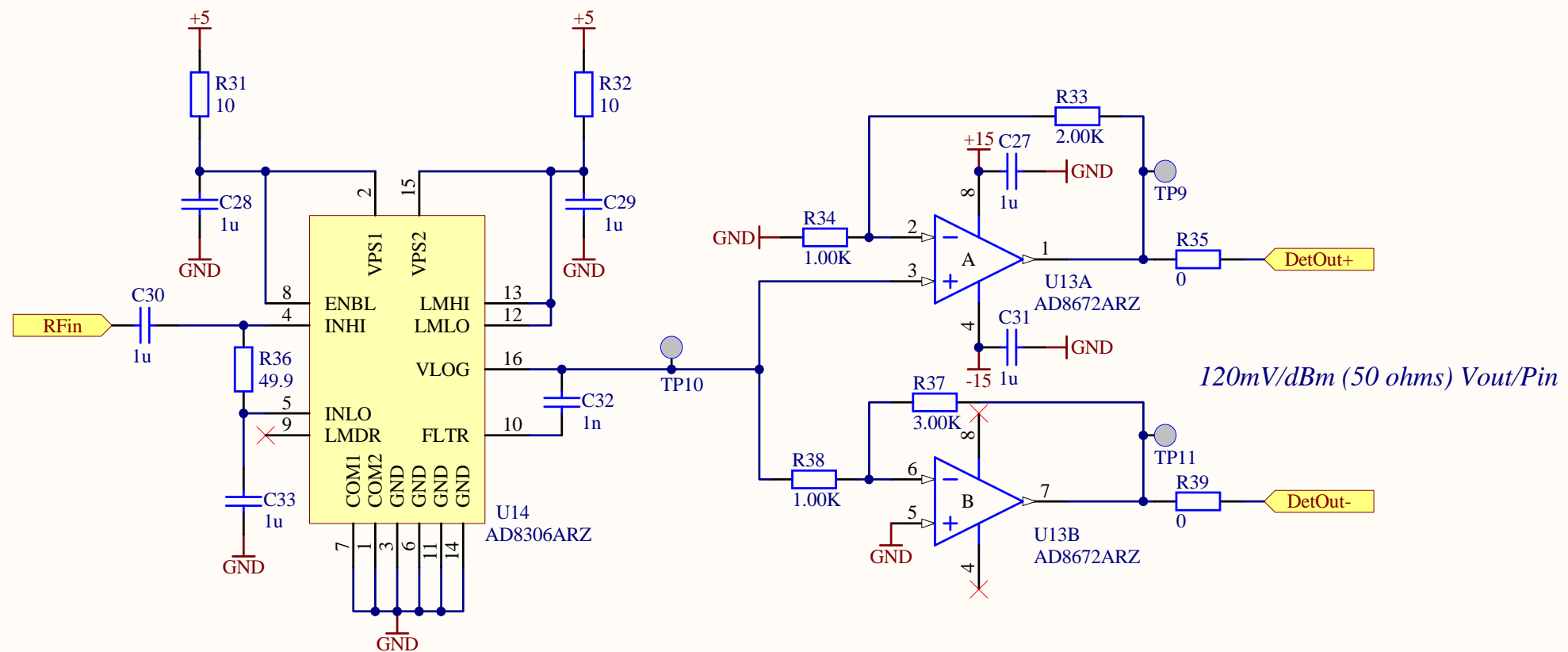


Poles at
 - 460kHz,
 - 5.3MHz and
 - 3.0MHz (double, Q=3)
 Nominal sensitivity is 36 deg/V

Last Edited: 22 January 2010

Title Audio Differential IF Amplifier		LIGO Laboratory California Institute of Technology Massachusetts Institute of Technology		 Date: 4/14/2011 Time: 12:28:59 PM Sheet 2 of 3
Size: A	PCB DCC # D1002471	SCH DCC # 2	Engineer: N. Smith	
File: C:\Users\daniel\Protel\RF\Demodulator\PhaseFreqDiscriminator\PhaseFreqDiscriminator2.SchDoc				

5 to 400 MHz Log Detector
90 dB Dynamic Range, 10dBm Max RF



120mV/dBm (50 ohms) Vout/Pin

Last Edited: 22 January 2010

Title		LIGO Laboratory California Institute of Technology Massachusetts Institute of Technology		LIGO
RF Logarithmic Detector				
Size: A	PCB DCC # D1002471	SCH DCC # 2	Engineer: R. Abbott	Date: 4/14/2011
File: C:\Users\daniel\Protel\RF\Demodulator\PhaseFreqDiscriminator\PhaseFreqDiscriminator3.SchDoc				Time: 12:28:59 PM
				Sheet 3 of 3