

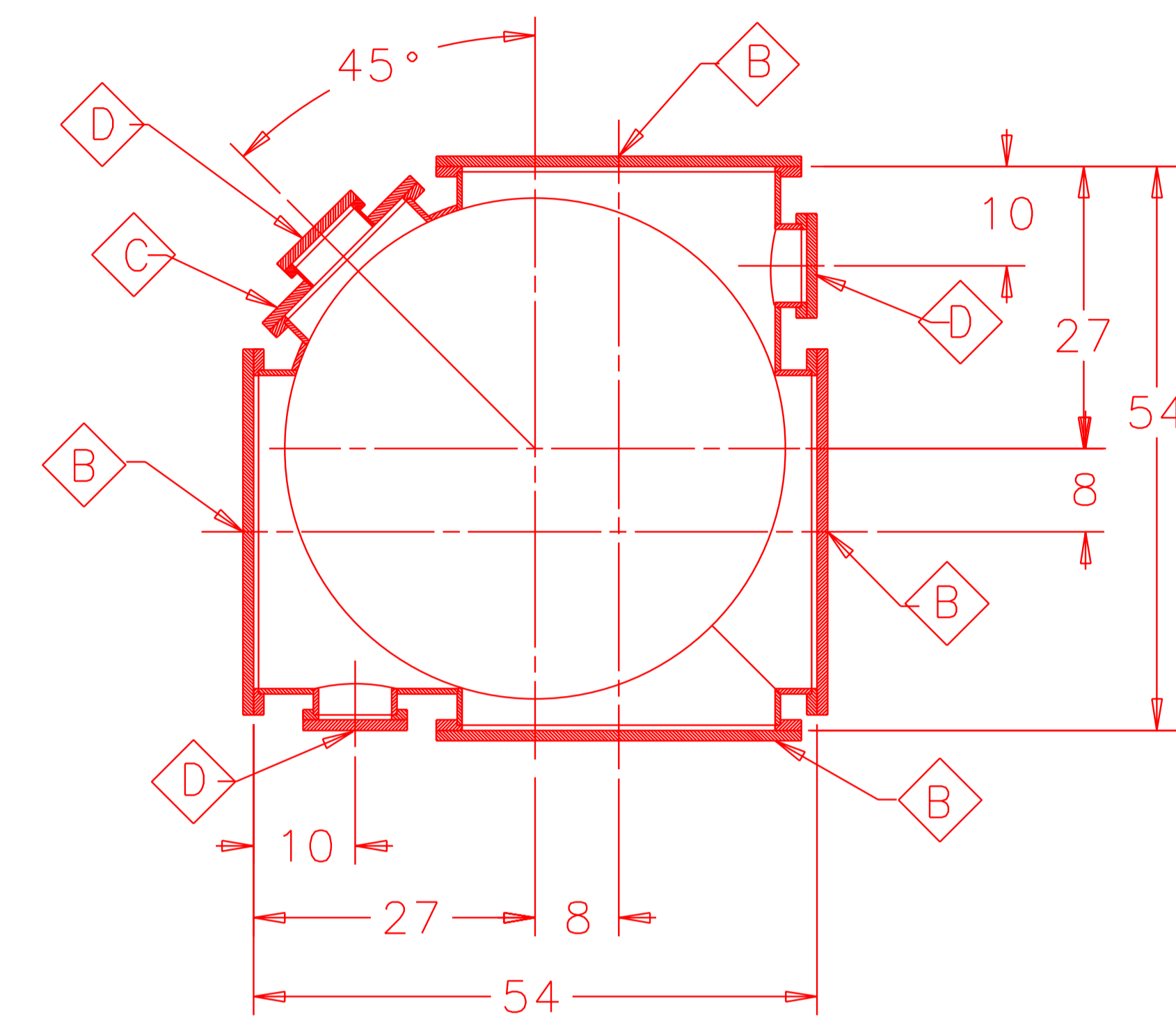
NOTES:

1. FLANGE SCHEDULE PER TABLE BELOW:

ITEM	SIZE	QTY.	TYPE SEAL	COVER	CENTERING PINS
◇A	48" ID TUBE	2	DUAL "O" RING	N/A	2
◇B	30" OD TUBE	4	DUAL "O" RING	TEMPORARY	2
◇C	16" OD TUBE	1	DUAL "O" RING	BLIND FLANGE WITH OPENING	2
◇D	8" OD TUBE	7	CONFLAT	TEMPORARY	0
◇E	8" OD TUBE	8	CONFLAT	BLIND FLANGE	0
◇F	8" OD TUBE	8	CONFLAT	BLIND FLANGE	0
◇G	1.5" OD TUBE	1	CONFLAT	BLIND FLANGE	0

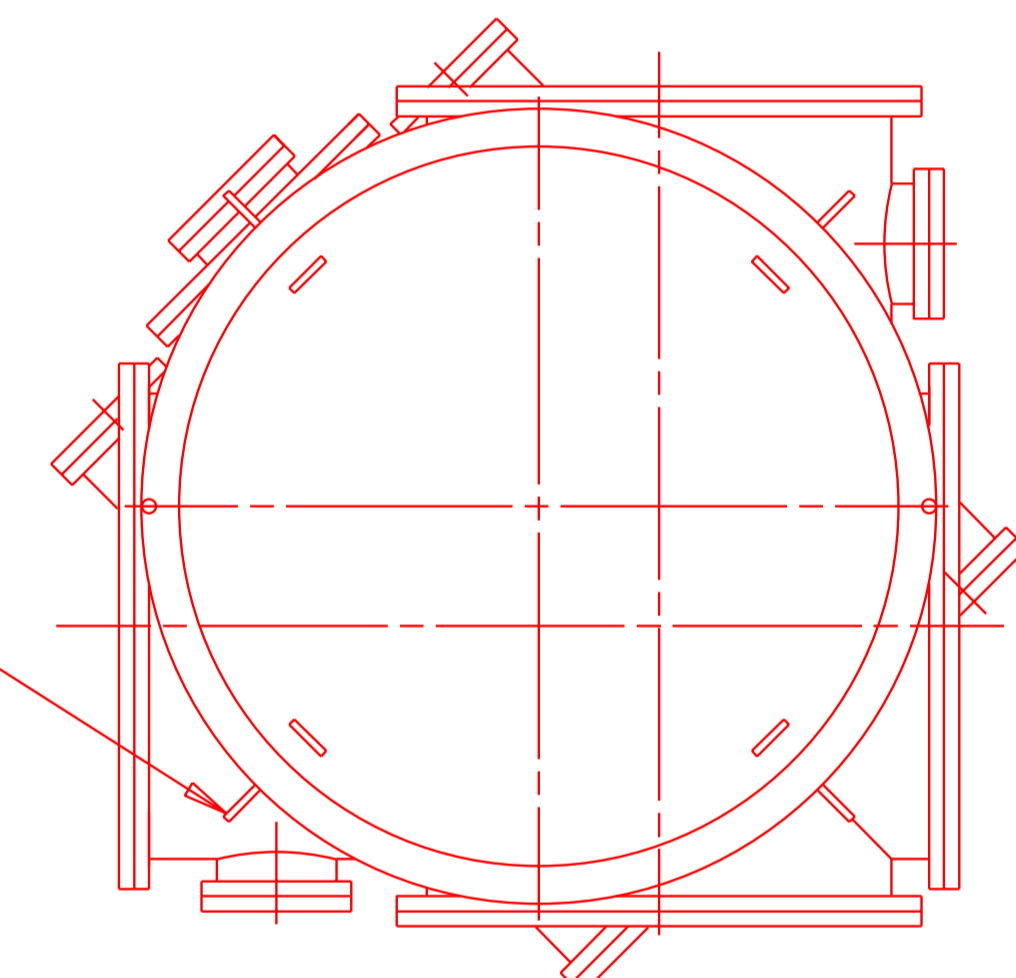
NOTES: (UNLESS OTHERWISE SPECIFIED)
 1. THIS DRAWING AND ALL ITS COMPONENT DRAWINGS HAVE BEEN RENUMBERED. THE PREVIOUS NUMBER FOR THIS DRAWING IS 1202012.

- TEMPORARY COVERS ARE FOR SHIPPING/STORAGE PURPOSES ONLY (E.G., 1/4" ALUMINUM)
- DUAL "O" RING SEALS INCLUDE PUMPED ANNULUS BETWEEN SEALS. ALL ANNULUSES ON CHAMBER TO BE CONNECTED TO A SINGLE FLANGE ◇G.
- ALL LINEAR DIMENSIONS ARE IN INCHES.
- TOLERANCES, UNLESS OTHERWISE SPECIFIED: LINEAR, +/- 0.1" ANGULAR, +/- 1 DEGREE
- ALL FLANGES TO BE PERPENDICULAR TO THE INDICATED OPENING AXIS WITHIN A 0.1" WIDE TOLERANCE ZONE, UNLESS OTHERWISE SPECIFIED.
- MARK PARTS PER SPECIFICATION; CHAMBER I.D. IS BSCX, WHERE X REPRESENTS A SERIALIZED CHAMBER NUMBER: 1,2,3...ETC.
- THE NECKS ATTACHING FLANGES ◇C & ◇D SHOULD BE MADE AS SHORT AS PRACTICAL.
- (REFERENCE ONLY) LASER BEAM HEIGHT ABOVE SUPPORTING SURFACE IS 36"
- ◇E OPENINGS TO BE IN TWO SETS OF TWO EACH, COAXIAL WITHIN 0.1" DIA., WITH AXES 7" +/- 0.05" ABOVE SUPPORTING SURFACE AND WITH FLANGES PERPENDICULAR TO AXES WITHIN 0.03"
- CHAMBER SHALL COMPLY WITH SPECIFICATION 1202010, REVISION A.

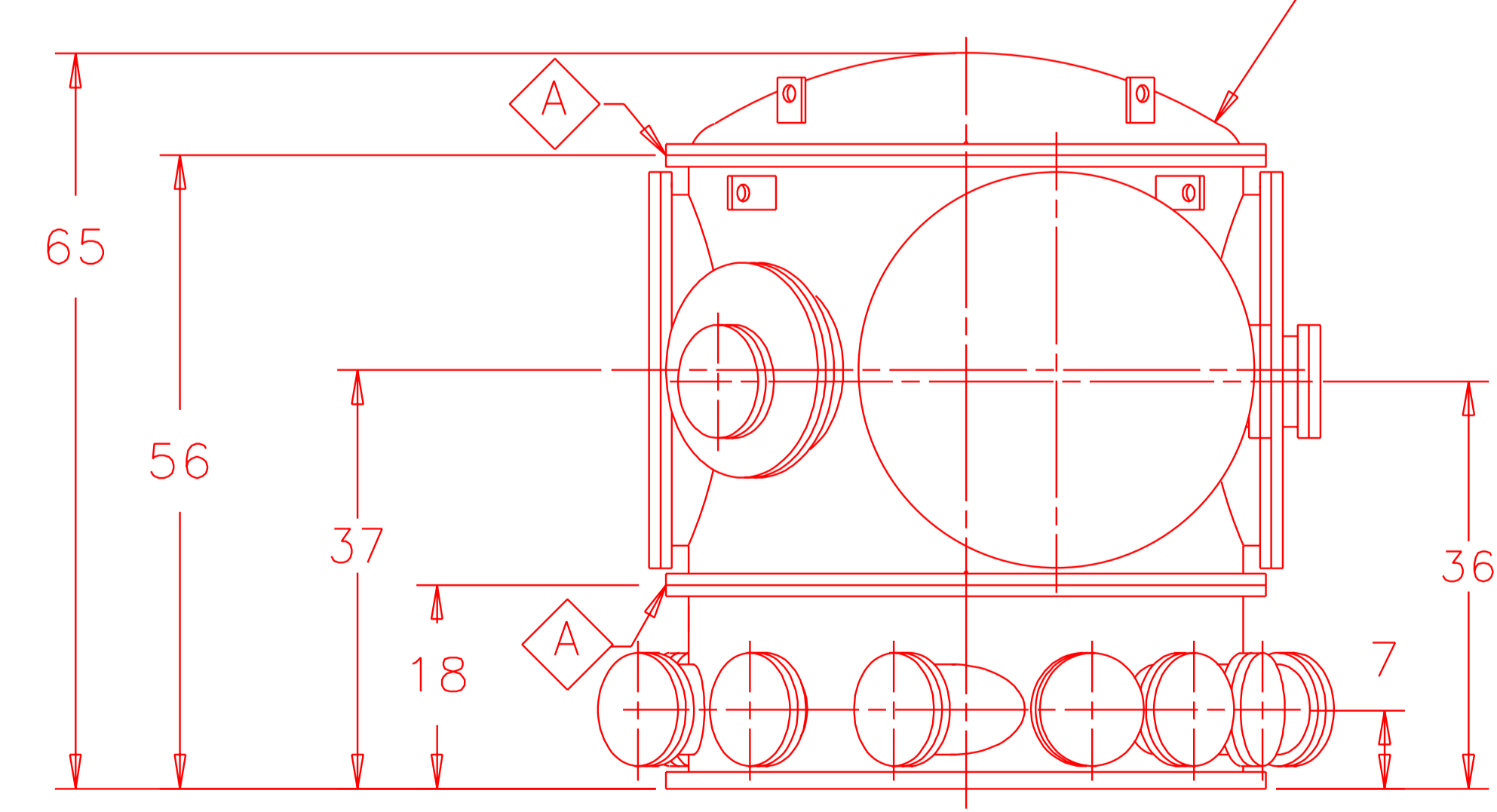


SECTION A-A THROUGH MID SECTION FLANGES

4 LIFTING LUGS ON MID SECTION

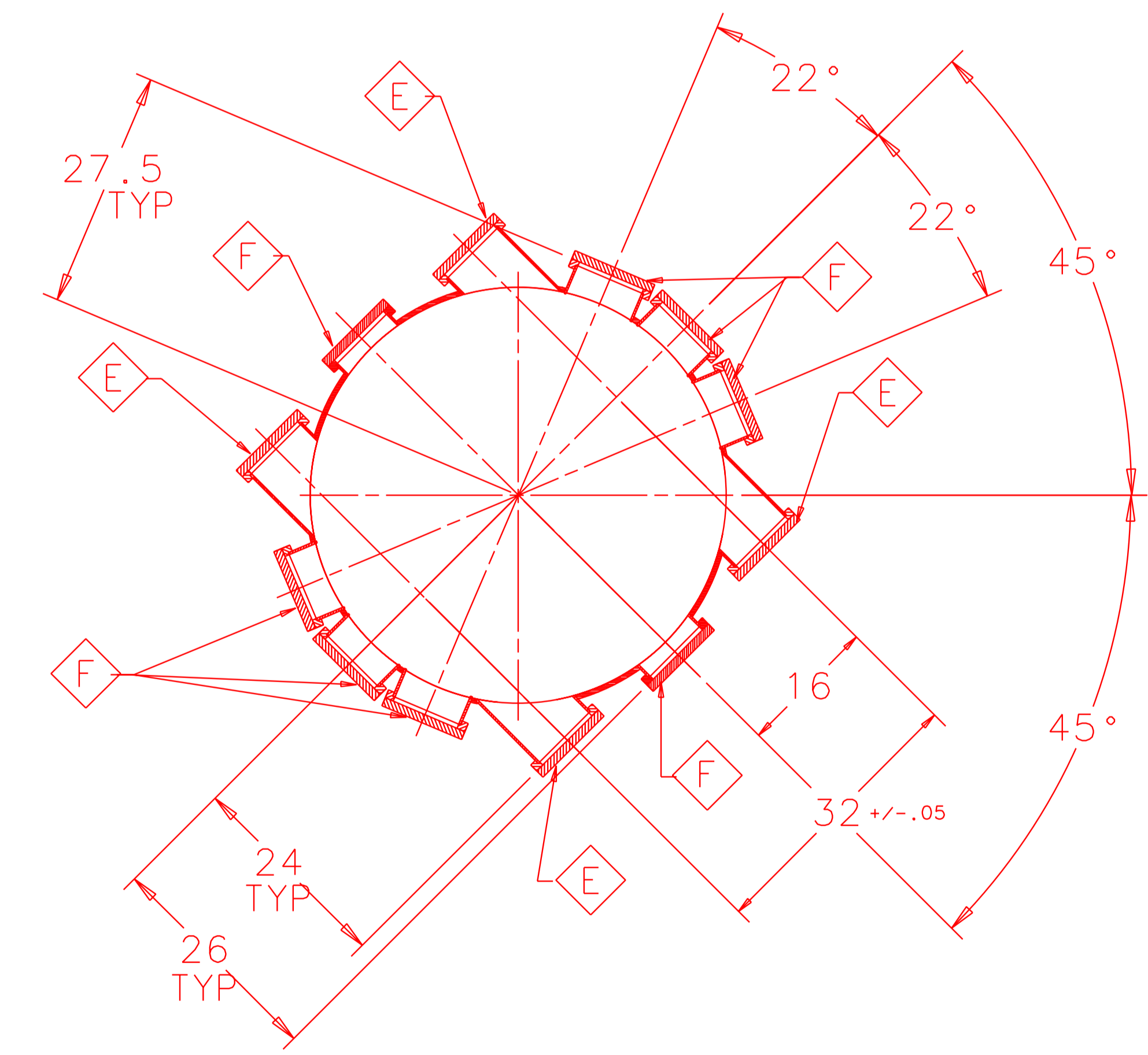
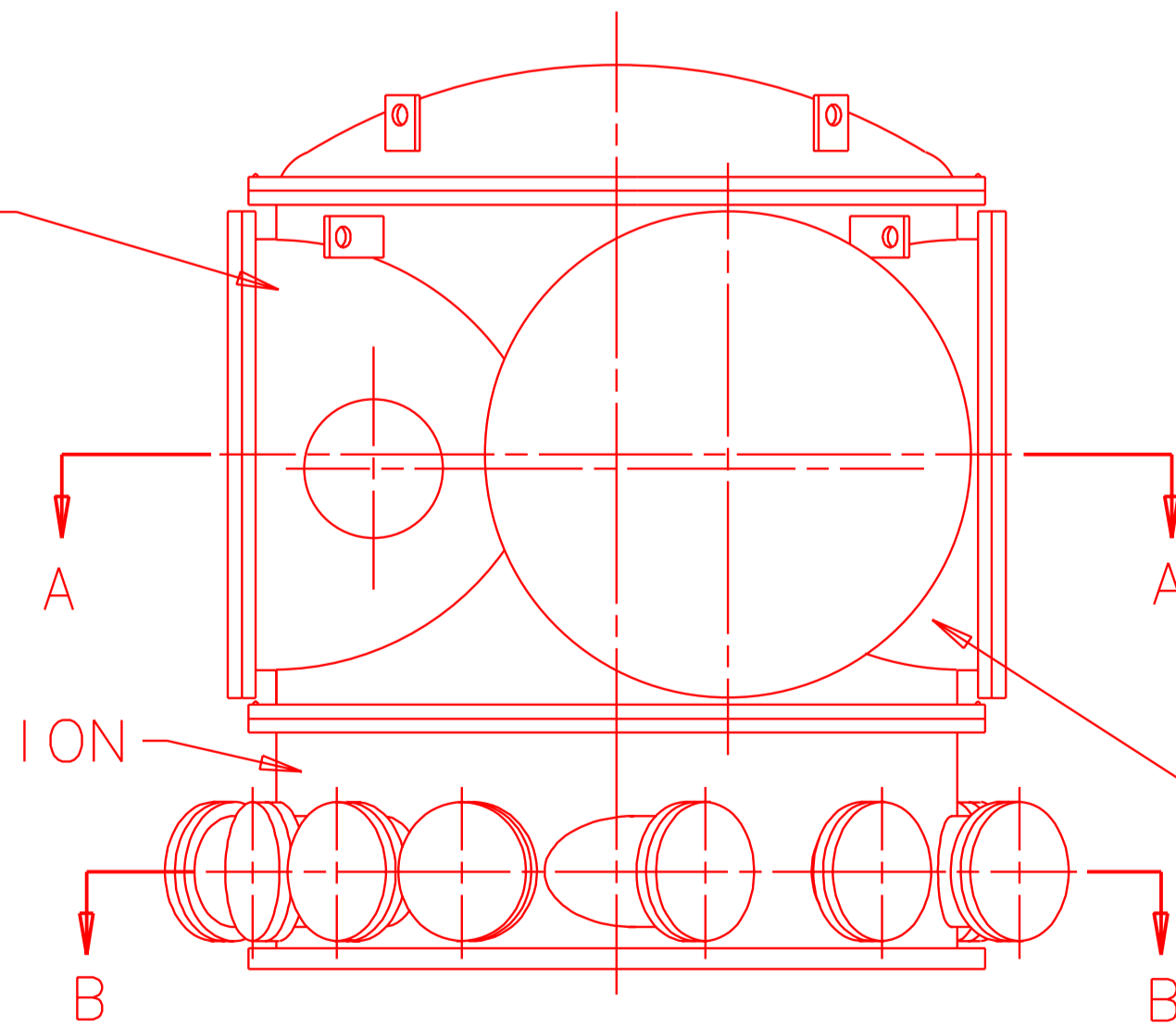


ASME FLANGED & DISHED TOP HEAD WITH 4 LIFTING LUGS



MID SECTION

LOWER SECTION



SECTION B-B THROUGH LOWER FLANGES

FLANGE ◇G OF MANIFOLD FOR PUMPING ANNULUSES TO BE LOCATED IN AREA BELOW JUNCTION OF FLANGES ◇B (SEE NOTE 3).

DRWN	L. JONES	DATE		CALIFORNIA INSTITUTE OF TECHNOLOGY	LIGO PROJECT
CHKD				MASSACHUSETTS INSTITUTE OF TECHNOLOGY	
ENGR	L. JONES			I-Deas CAD file: D990624-A.asc	
APPD				dcc file: D990624-A.pdf	
UNLESS OTHERWISE SPECIFIED: DIMENSION UNITS ARE inches (mm) TOLERANCES ARE: x.xxx: x.xx: x.x:				4' SPLITTER CHAMBER CONFIGURATION	
DO NOT SCALE DRAWING				SCALE: NTS	DRAWING NUMBER: D990624-A
				SHEET: 1 OF 1	