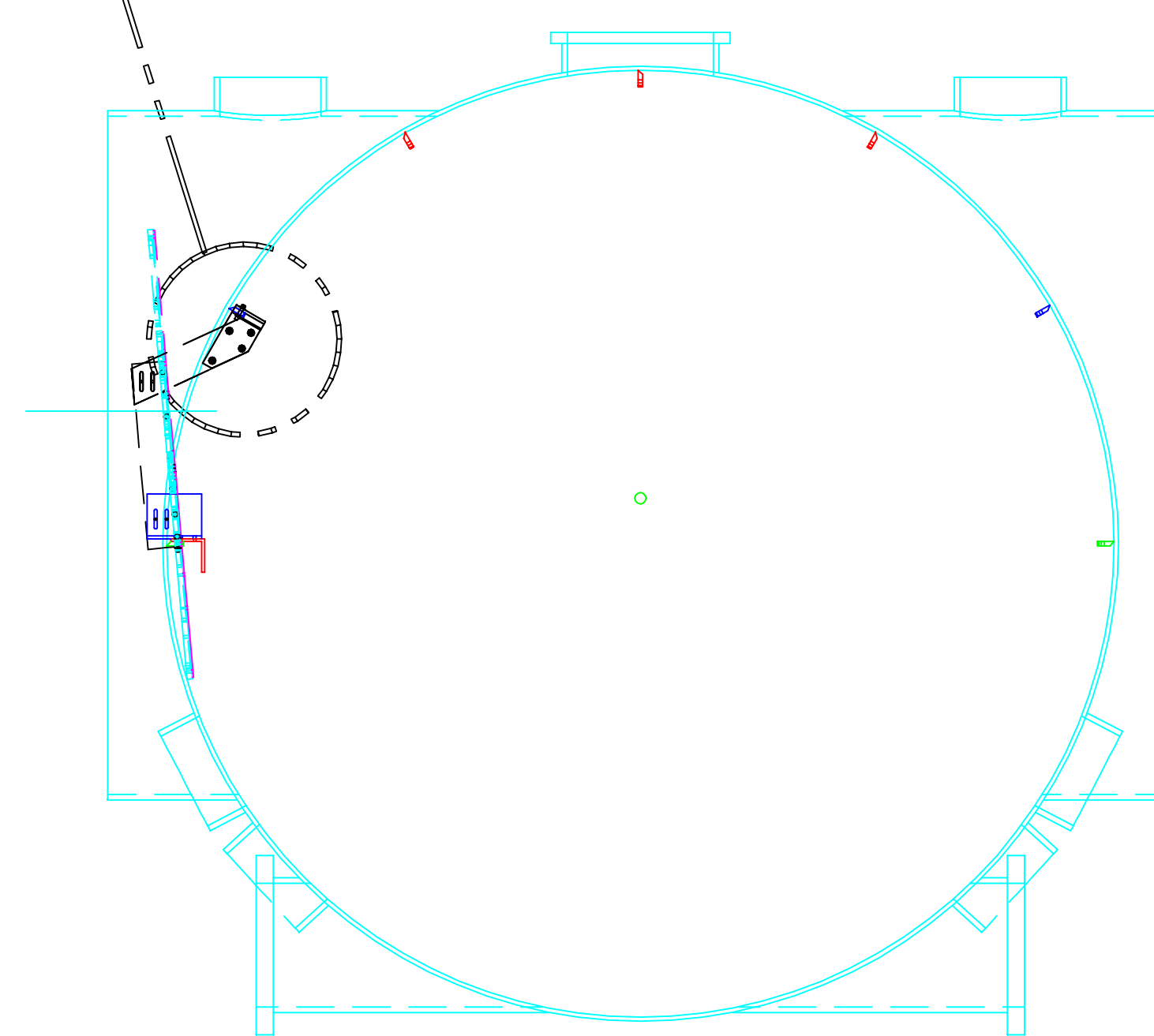
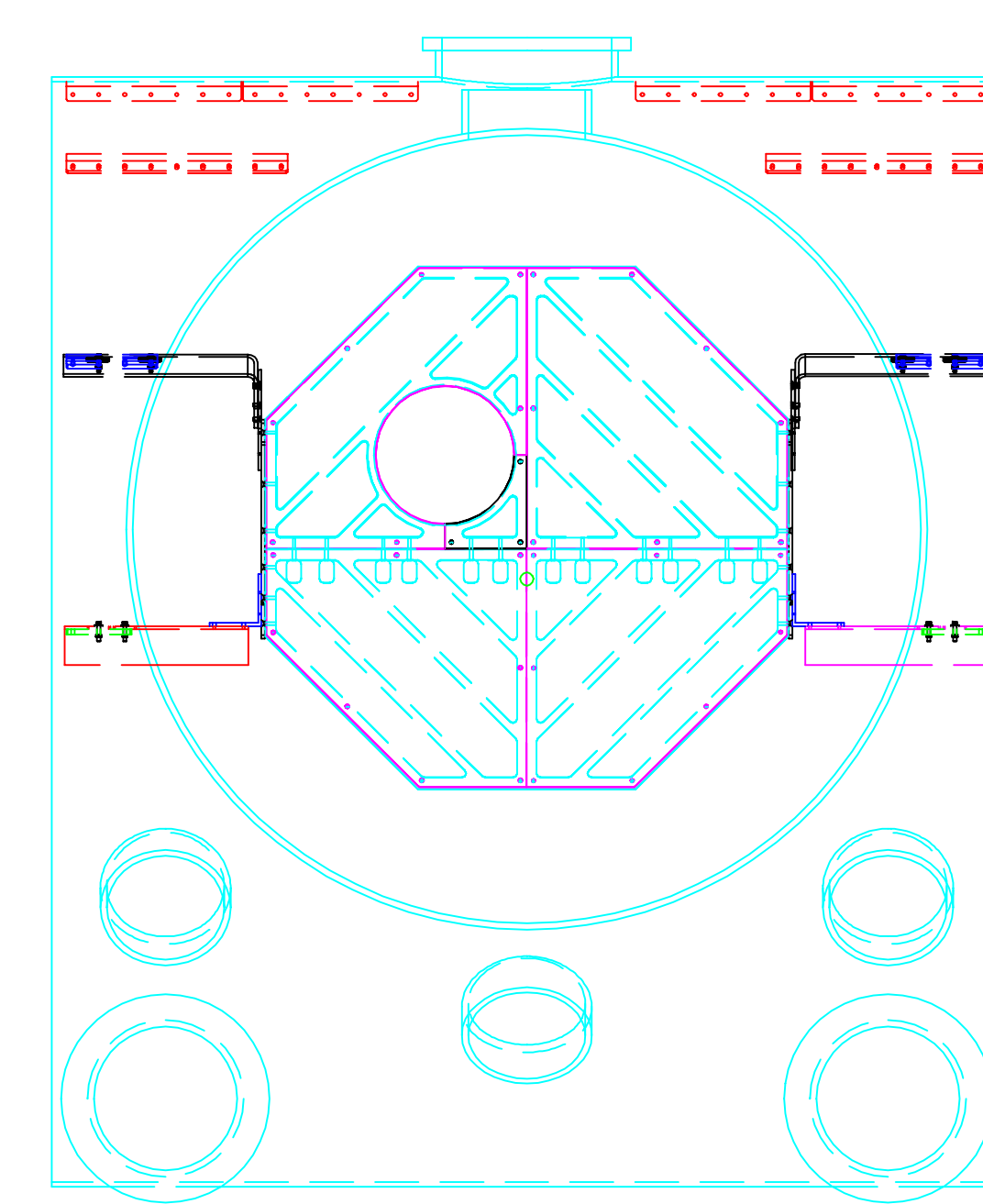


ENLARGED VIEW OF FASTENERS
TYPICAL ATTACHMENT POINT



TO PSL →



SIDE ELEVATION OF HAM 8

VIEW OF I.D. BAFFLE, GLASS SIDE, FROM PSL

REF	QTY	PART or DRWG No.	DESCRIPTION	MATERIAL
4	1	D990597-A	I.D. BAFFLE, 2K, ASSEMBLY	-
3	8	McMaster-Carr # 91845A105	HEX REGULAR NUT 1/4-28 THREAD	STAINLESS STEEL
2	8	McMaster-Carr # 92141A029	FLAT WASHER, .281 i.d. x .625 i.d. x .050 HIGH	STAINLESS STEEL
1	8	U-C COMPONENTS # C-2820-NA	SHCS, 1/4-28 x 1.25 LONG	STNLSS STL -SILVR PL.

DWG. NO.		DESCRIPTION		MATERIAL		HEAT TREAT		FINISH		REV		DESCRIPTION		DCN NUMBER		APPR'D		CHECK		DRWN		DATE		SCALE		SHEET	
		REFERENCE DRAWINGS								A		RELEASE		E990422		-		-		-		KABOT		11-19-99		LIGO CALIFORNIA INSTITUTE OF TECHNOLOGY MASSACHUSETTS INSTITUTE OF TECHNOLOGY	
										00		PRE-RELEASE				-		-		-		KABOT		4-3-98		I. O. BAFFLE, 2K, INSTALLATION	
										REV		DESCRIPTION		DCN NUMBER		APPR'D		CHECK		DRWN		DATE		SCALE		SHEET	
																										D990596-A 1 OF 1	

UNLESS OTHERWISE SPECIFIED
DIMENSIONS ARE IN INCHES

TOLERANCES:
FRACTIONAL ±
ANGULAR ±
ANGULARMACH ± BEND ±
TWO PLACE DECIMAL ±

THREE PLACE DECIMAL ±
FINISHED SURFACE RMS
BREAK CORNERS IN: OUT:
REMOVE ALL BURRS

MATERIAL: HEAT TREAT: FINISH:

USED ON: NEXT ASS'Y: D970308

ISSUE DESCRIPTION

SCALE: NTS SHEET: 1 OF 1