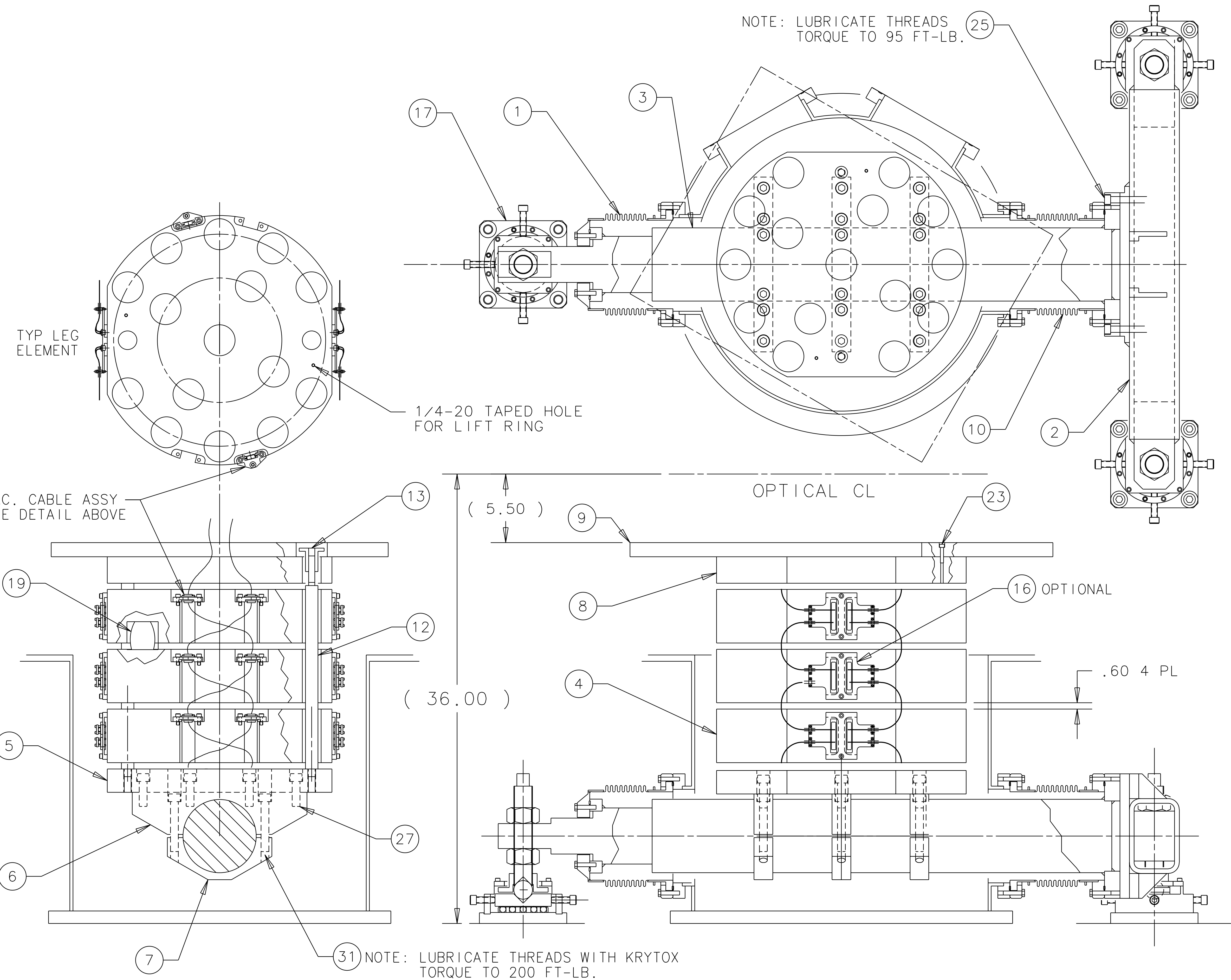
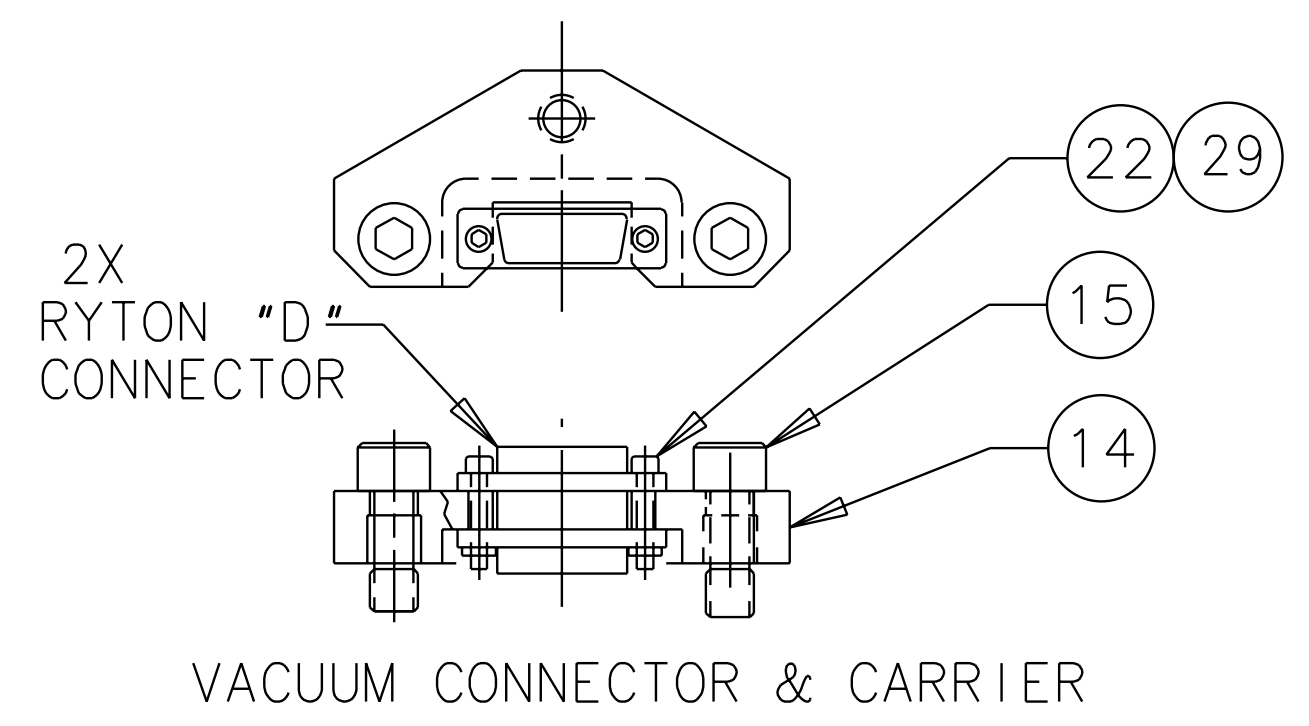


REV	DATE	DRAWN BY	CHECKED	DCC	DCN/DESCRIPTION
A	9/15/99	C. Conley			E990349-00-R
B	4/25/00	L. JONES			E000232-00-R

NOTES: (UNLESS OTHERWISE SPECIFIED)  
 1. THIS DRAWING AND ALL ITS COMPONENT DRAWINGS HAVE BEEN RENUMBERED. THE PREVIOUS NUMBER FOR THIS DRAWING IS 1205452.



QTY	PART OR IDENTIFYING NO	NOMENCLATURE OR DISCUSSION	MATERIAL SPECIFICATION	ITEM NO
6		UNBRAKO HIGH STRENGTH SCR		31
		5/8-18 X 4.0 CAP SCR		30
		#4-40 HEX NUT		29
1	D990556	TOP LEG ELEMENT		28
12	78794-10F-32	UNBRAKO HIGH STRENGTH SCR		27
		5/8-18 X 2.0 CAP SCR		26
8	78794-8C-24	UNBRAKO HIGH STRENGTH SCR		25
		1/2-13 X 1.5 SHCS		24
22		1/4-20 X 1.25 VENTED SHCS		23
24		#2-56 X .50 SHCS		22
				21
				20
AR		VITON SPRINGS		19
				18
3	D990569	DRIFT COMPENSATOR ASSEMBLY		17
AR	D990563	MODIFIED CONNECTOR BRACKET		16
24	D990562	CAPTIVE SCREW		15
12	D990614	CARRIER, STACK CONNECTOR		14
2	D990561	EARTHQUAKE STOP NUT		13
2	D990560	EARTHQUAKE STOP BAR		12
2	D990559	STACK ASSEMBLY TOOL		11
1	D990558	REAR ISOLATION BELLOWS		10
1	D990557	TOP PLATE		9
1	D990556	TOP LEG ELEMENT		8
3	D990555	LOWER BEAM CLAMP		7
3	D990613	UPPER BEAM CLAMP		6
1	D990554	SUPPORT PLATE		5
3	D990552	LEG ELEMENT		4
1	D990551	SUPPORT BEAM WELDMENT		3
1	D990548	CROSS BEAM WELDMENT		2
1	D990577	7" ISOLATION BELLOWS		1

QTY REQD	PART OR IDENTIFYING NO	NOMENCLATURE OR DISCUSSION	MATERIAL SPECIFICATION	ITEM NO
PARTS LIST				
DRWN	kdr	DATE	CALIFORNIA INSTITUTE OF TECHNOLOGY MASSACHUSETTS INSTITUTE OF TECHNOLOGY LIGO PROJECT	
CHKD			I-Deas CAD file: D990544_B.osc	
ENGR			dcc file: D990544-B.pdf	
APPD				
UNLESS OTHERWISE SPECIFIED:				
DIMENSION UNITS ARE inches (mm)				
TOLERANCES ARE:				
X.XXX:				
X.XX:				
X.X:				
DO NOT SCALE DRAWING				
SCALE:	NTS	SIZE	DRAWING NUMBER	SHEET
		E	D990544-B	1 of 1